



## **\*\*NEW LABORATORY TEST\*\***

### **Meningitis/Encephalitis pathogen panel**

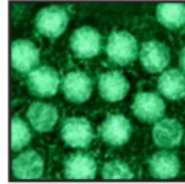
- Replacement for viral CSF culture
  - Specimen type: CSF
  - Minimum volume: 0.5 mL
  - Turn-around time: 24 h after receipt to lab
  - Orders: Orderable in HealthBridge and Tsystem
  - Limitations: This test does not differentiate between active and latent CMV or HHV-6
- The Meningitis/Encephalitis panel is only orderable as a care set that includes:
    - Meningitis/Encephalitis PCR panel
    - Bacterial CSF culture
    - CSF Protein
    - CSF Glucose
    - CSF Cell count

# Molecular detection of 14 of the most common meningitis-encephalitis-causing pathogens



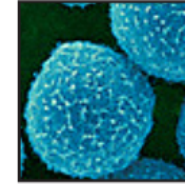
Bacteria

*Escherichia coli* K1  
*Haemophilus influenzae*  
*Listeria monocytogenes*  
*Neisseria meningitidis*  
*Streptococcus agalactiae*  
*Streptococcus pneumoniae*



Viruses

Cytomegalovirus (CMV)  
Enterovirus  
Herpes simplex virus 1 (HSV-1)  
Herpes simplex virus 2 (HSV-2)  
Human herpesvirus 6 (HHV-6)  
Human parechovirus  
Varicella zoster virus (VZV)



Fungi

*Cryptococcus neoformans/gattii*

**\*\*Note:** If you are suspecting a virus other than those included in the panel, please contact the laboratory for guidance to order additional testing.

# Sample collection

Due to the extremely high sensitivity of this diagnostic test, all individuals handling the specimen (when open) should be masked and specimen tubes should be closed as soon as possible during collection.

# Questions?

Contact the virology laboratory

Ext x1837

Contact laboratory director

Caitlin Otto, PhD, D(ABMM)

[Caitlin.Otto@downstate.edu](mailto:Caitlin.Otto@downstate.edu)

Ext x8295