

# What is CORONAVIRUS?

Coronavirus is a large family of viruses that cause illness ranging from the common cold to more severe diseases like pneumonia, MERS, and SARS.

## SEVERE SYMPTOMS

- High Fever (100.4° F or higher)
- Pneumonia
- Kidney failure
- Death

## TRANSMISSION

Coughs or sneezes from touching contaminated objects

## COMMON SYMPTOMS

Fever

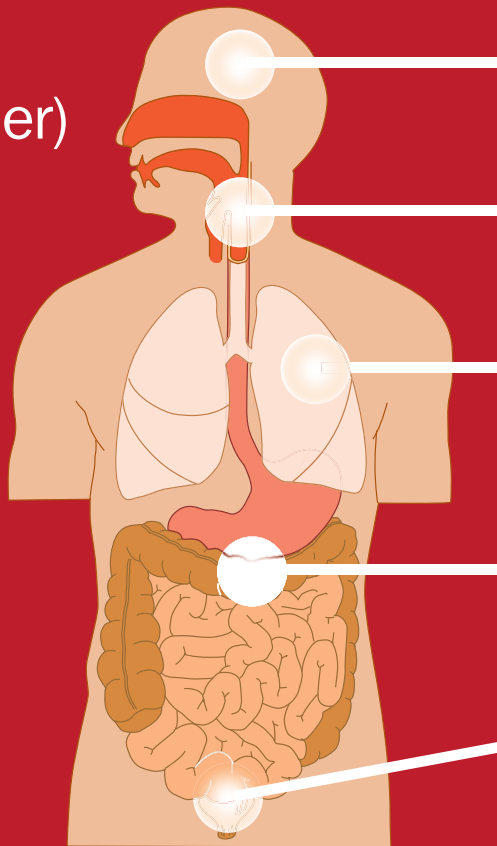
After 2 to 7 days develop a **dry cough**

**Mild Breathing** difficulties at the outset

**Gastrointestinal issues**

**Diarrhea**

General body aches



**SUNY**  
**DOWNSTATE**  
Health Sciences University

University Hospital of Brooklyn



[www.downstate.edu/uhb](http://www.downstate.edu/uhb)

\* Source: Centers for Disease Control and Prevention/USA Today