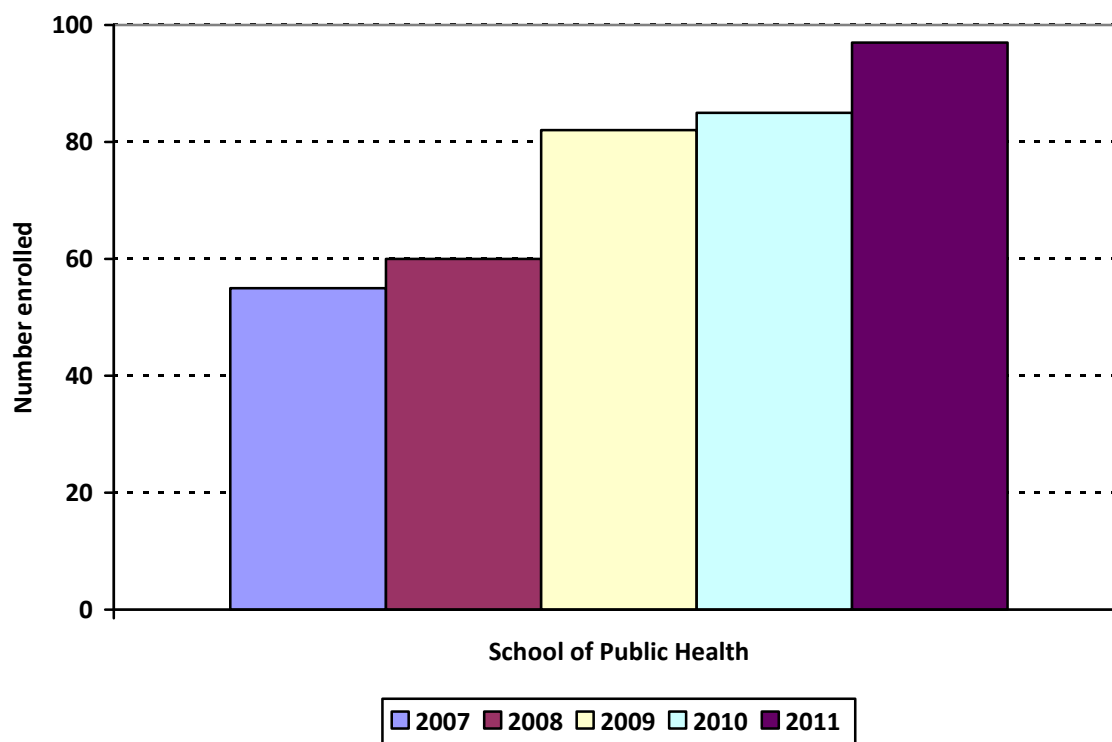


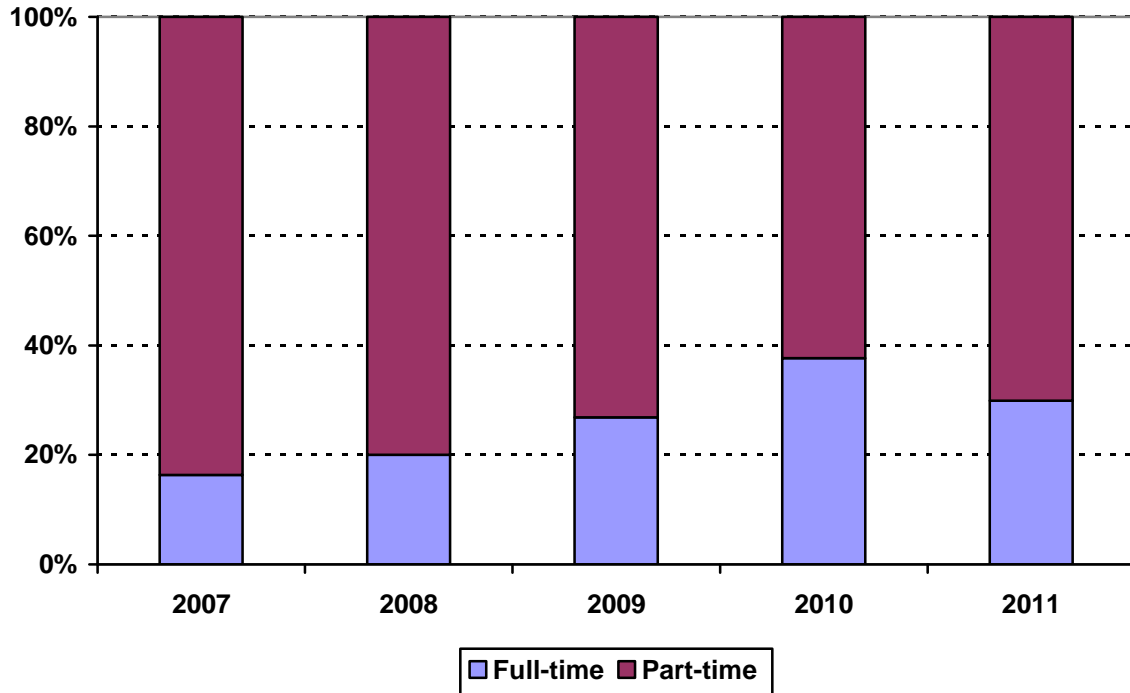
School of Public Health Fall 2007 to Fall 2011



School of Public Health	Year				
	2007	2008	2009	2010	2011
New students	39	36	56	31	30
Continuing students	16	24	26	54	67
Total	55	60	82	85	97
Change from previous year	6%	8%	37%	4%	14%

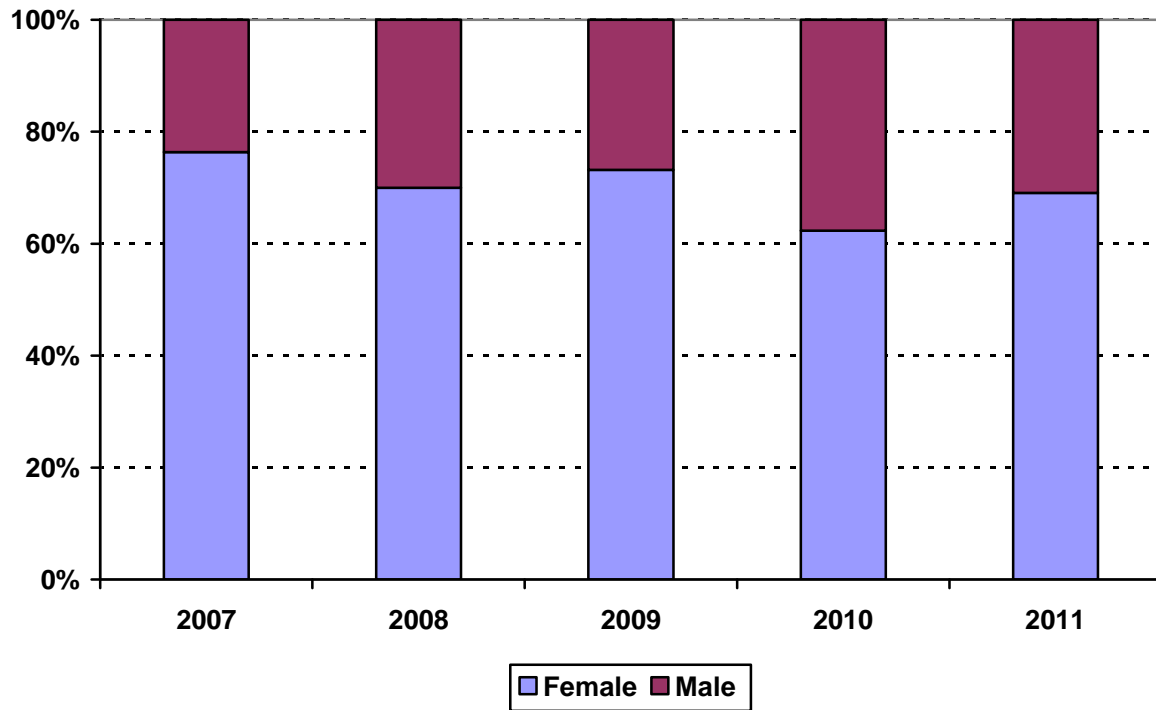
The totals do **not** include students concurrently enrolled in the MD/MPH Programs: 31 in 2007, 27 in 2008, 24 in 2009, 24 in 2010 and 22 in 2011.

School of Public Health
Enrollment by Full- and Part-time Status
 Fall 2007 to Fall 2011



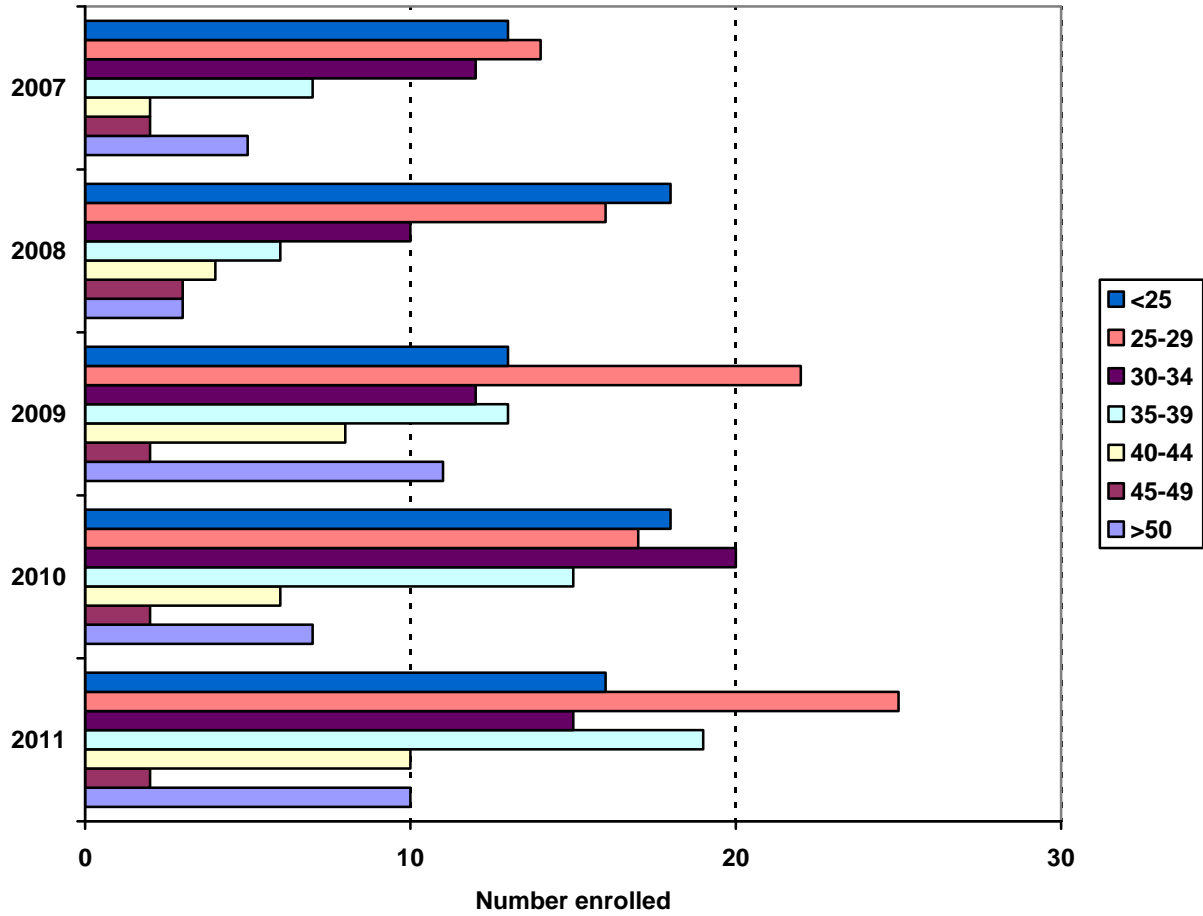
Enrollment Levels	Year				
	2007	2008	2009	2010	2011
Full-time	9	12	22	32	29
Part-time	46	48	60	53	68
% Full-time	16%	20%	27%	38%	30%
Total	55	60	82	85	97

**School of Public Health
Enrollment by Gender**
Fall 2007 to Fall 2011



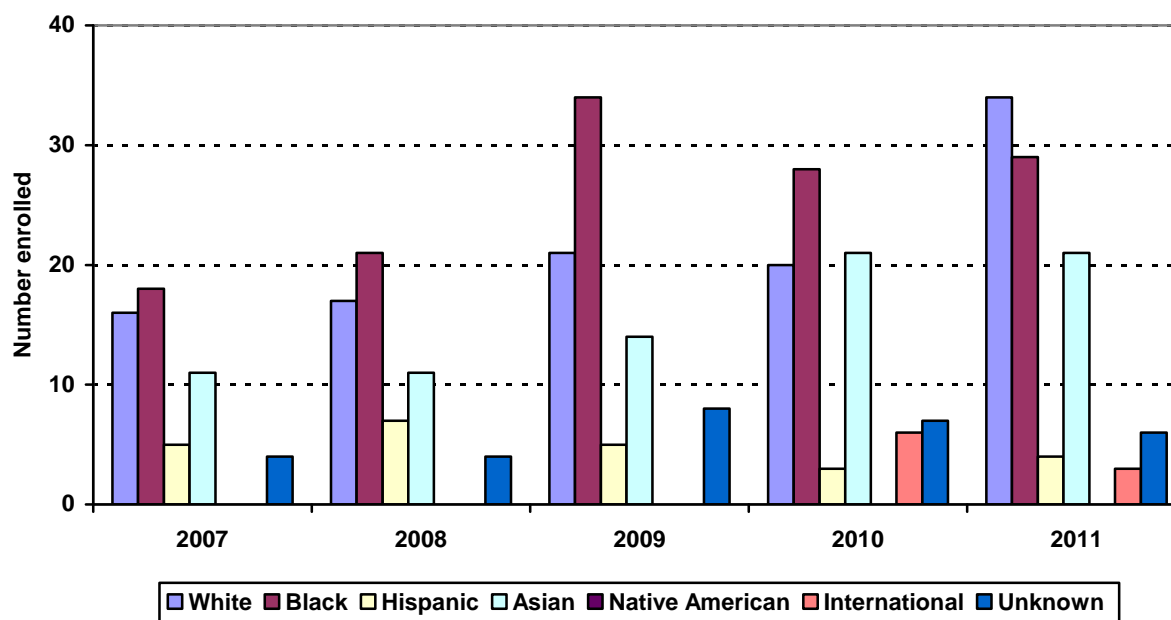
Gender	Year			Year			Year			Year			Year		
	2007			2008			2009			2010			2011		
	F	M	%F	F	M	%F	F	M	%F	F	M	%F	F	M	%F
Total	42	13	76%	42	18	70%	60	22	73%	53	32	62%	67	30	69%
Change from previous year			9%			6%			3%			15%			7%

School of Public Health Enrollment by Age Level Fall 2007 to Fall 2011



Age	Year									
	2007		2008		2009		2010		2011	
	N	%	N	%	N	%	N	%	N	%
Under 25	13	24%	18	30%	13	16%	18	21%	16	16%
25-29	14	25%	16	27%	22	27%	17	20%	25	26%
30-34	12	22%	10	17%	12	15%	20	24%	15	15%
35-39	7	13%	6	10%	13	16%	15	18%	19	20%
40-44	2	4%	4	7%	8	10%	6	7%	10	10%
45-49	2	4%	3	5%	3	4%	2	2%	2	2%
50 and over	5	9%	3	5%	11	13%	7	8%	10	10%
Median age	30		29		32		31		32	
Age range	22-60		22-61		22-62		20-61		22-63	
Total	55		60		82		85		97	

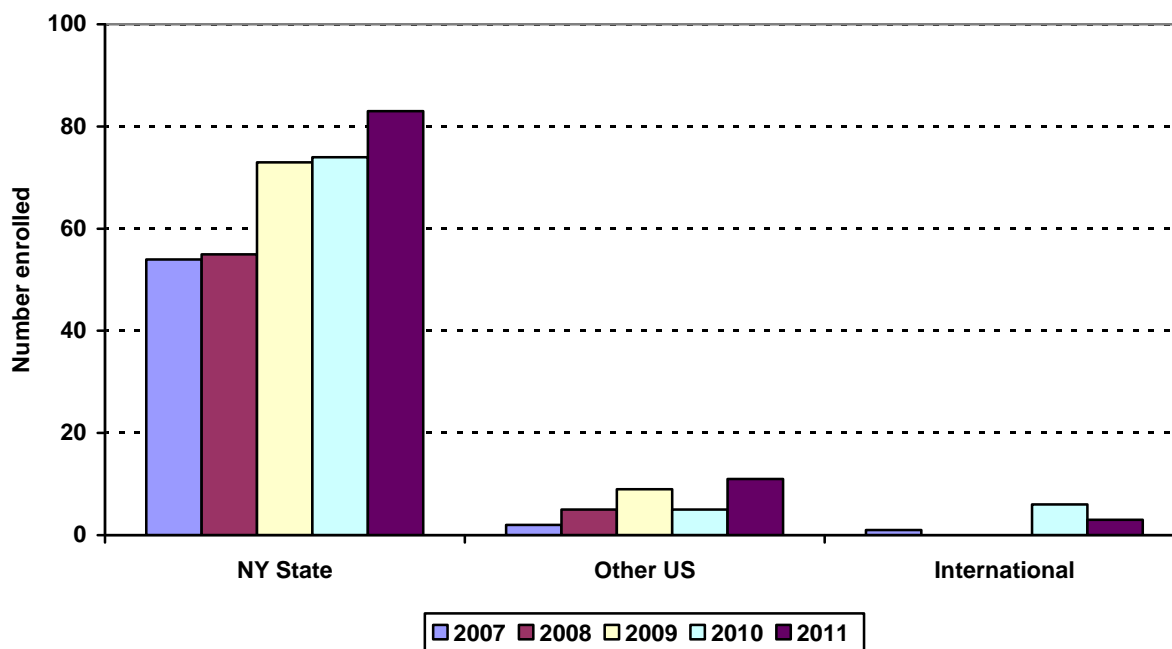
School of Public Health Enrollment by Ethnic Group Fall 2007 to Fall 2011



Ethnic Group (IPEDS Categories)	Year									
	2007		2008		2009		2010		2011	
	N	%	N	%	N	%	N	%	N	%
White	16	29%	17	31%	21	26%	20	24%	34	35%
Black	18	33%	21	38%	34	41%	28	33%	29	30%
Hispanic	5	9%	7	13%	5	6%	3	4%	4	4%
Asian/Pacific Islander	11	20%	11	20%	14	17%	21	25%	21	22%
Native American	0	0%	0	0%	0	0%	0	0%	0	0%
International	0	0%	0	0%	0	0%	6	7%	3	3%
Unknown	4	7%	4	7%	8	10%	7	8%	6	6%
<i>Black and Hispanic</i>	23	42%	28	51%	39	48%	31	37%	33	34%
Total	55		60		82		85		97	

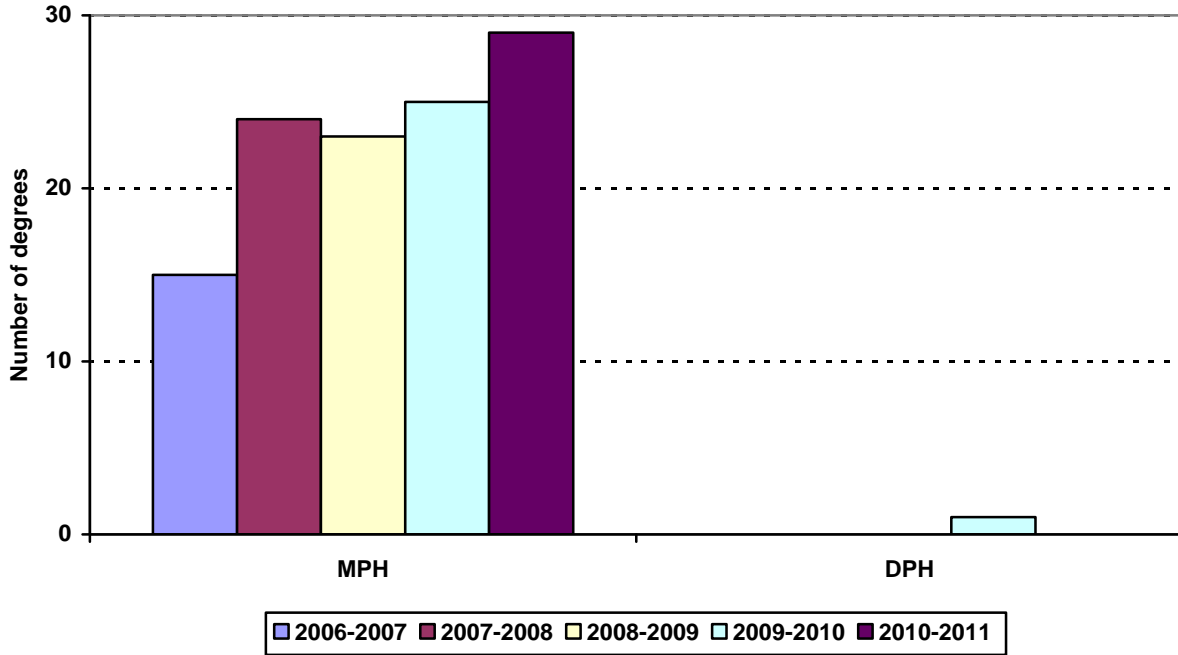
- The Integrated Postsecondary Education Data Set (IPEDS) ethnic categories are those used by the U.S. Department of Education.

**School of Public Health
Enrollment by Permanent Residence
Fall 2007 to Fall 2011**



Residency	Year									
	2007		2008		2009		2010		2011	
	N	% of total	N	% of total	N	% of total	N	% of total	N	% of total
New York State	54	98%	55	92%	73	89%	74	87%	83	86%
New York City	42	76%	44	73%	52	63%	54	64%	58	60%
Bronx	2	4%	1	2%	0	0%	1	1%	1	1%
Kings (Brooklyn)	25	45%	27	45%	38	46%	26	31%	26	27%
Manhattan	2	4%	4	7%	6	7%	8	9%	8	8%
Queens	8	15%	9	15%	7	9%	18	21%	21	22%
Richmond (Staten I.)	3	5%	3	5%	1	1%	1	1%	2	2%
Other U.S.	2	4%	5	8%	9	11%	5	6%	11	11%
International	1	2%	0	0%	0	0%	6	7%	3	3%
Total	55		60		82		85		97	

School of Public Health Degrees Granted by Level Fiscal Years 2006-2007 to 2010-2011



Degree Level	Year				
	2006-2007	2007-2008	2008-2009	2009-2010	2010-2011
MPH	15	24	23	25	29
DPH				1	
Total	15	24	23	26	29
Change from previous year	50%	47%	-4%	13%	12%

School of Public Health
DEGREES EARNED BY ETHNIC GROUP

Ethnic Group	Year				
	2006-2007	2007-2008	2008-2009	2009-2010	2010-2011
White	4	4	8	8	11
% change	100%	0%	100%	0%	38%
Black	8	9	5	8	7
% change	100%	13%	-44%	60%	-13%
Hispanic	1	0	1	2	4
% change	-50%	0%		100%	100%
Asian	2	8	9	6	7
% change	0%	300%	13%	-33%	17%
Native American	0	0	0	0	0
% change	0%	0%	0%	0%	0%
International	0	0	0	0	0
% change	0%	0%	0%	0%	0%
Unknown	0	1	0	0	0
% change	0%		-100%	0%	0%
Total	15	22	23	26	29
Change from previous year	50%	47%	5%	13%	12%