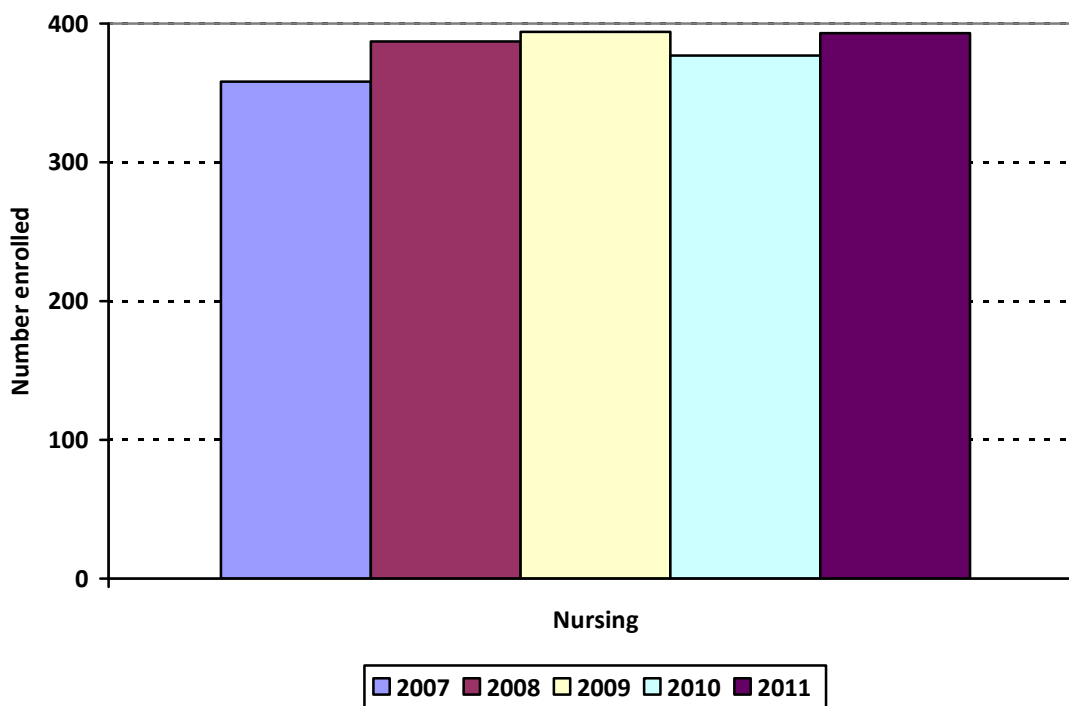


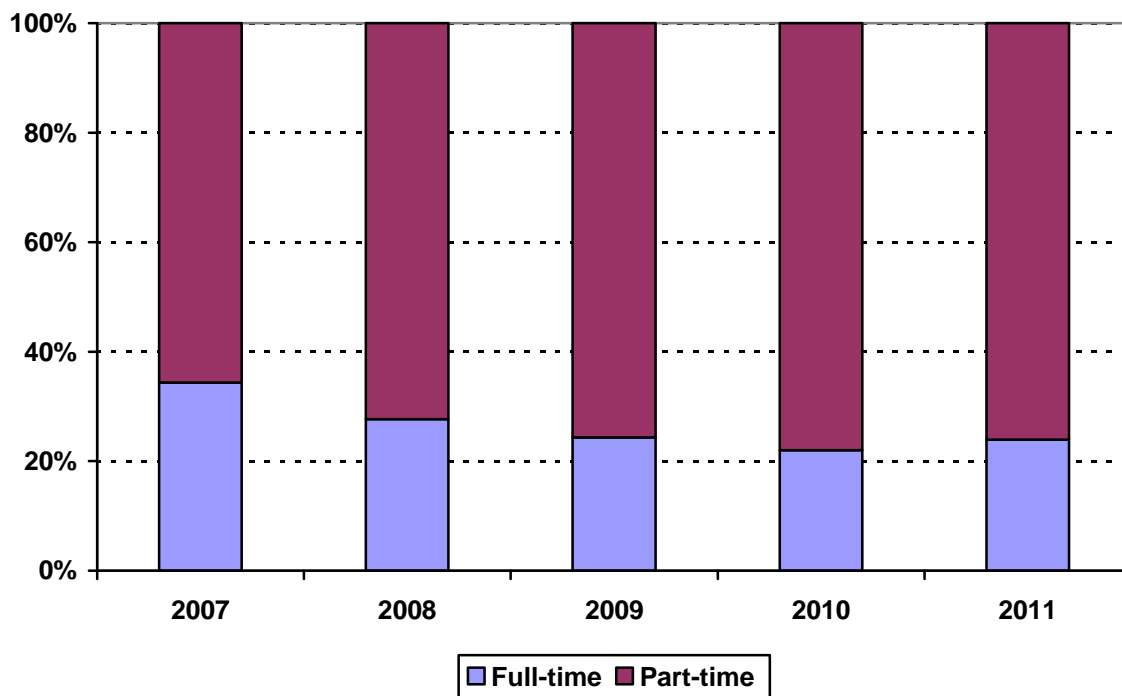
College of Nursing Enrollment Fall 2007 to Fall 2011



Award	Program	Code	Year				
			2007	2008	2009	2010	2011
BS	Accelerated Nursing	NACC	61	46	58	49	39
BS	RN Completion	RNBS	104	134	131	148	138
	Non-matriculated	000	0				
	Total Undergraduates		165	180	189	197	177
CAS	Family Nurse Practitioner	FNPC	1	3	2	3	
MS	Clinical Nurse Specialist	CNSM	31	15	17	13	17
MS	Clinical Nurse Spec. Adult	CNSA		15	4	4	
MS	Clinical Nurse Spec. HRMI	CNSH		2			
MS	Family Nurse Practitioner	FNPM	97	120	133	110	137
MS	Nurse Anesthesia	NRAN	32	15	13	18	28
MS	Nurse Midwifery	NRMS	17	15	17	16	14
MS	Women's Nurse Practitioner	WNPM	13	19	17	16	20
	Non-matriculated	999	2	3	2		
	Total Graduate		193	207	205	180	216
	Total		358	387	394	377	393
	Change from previous year		-8%	8%	2%	-4%	4%

College of Nursing totals reflect the deactivation of the Generic Nursing program, beginning in 1997.

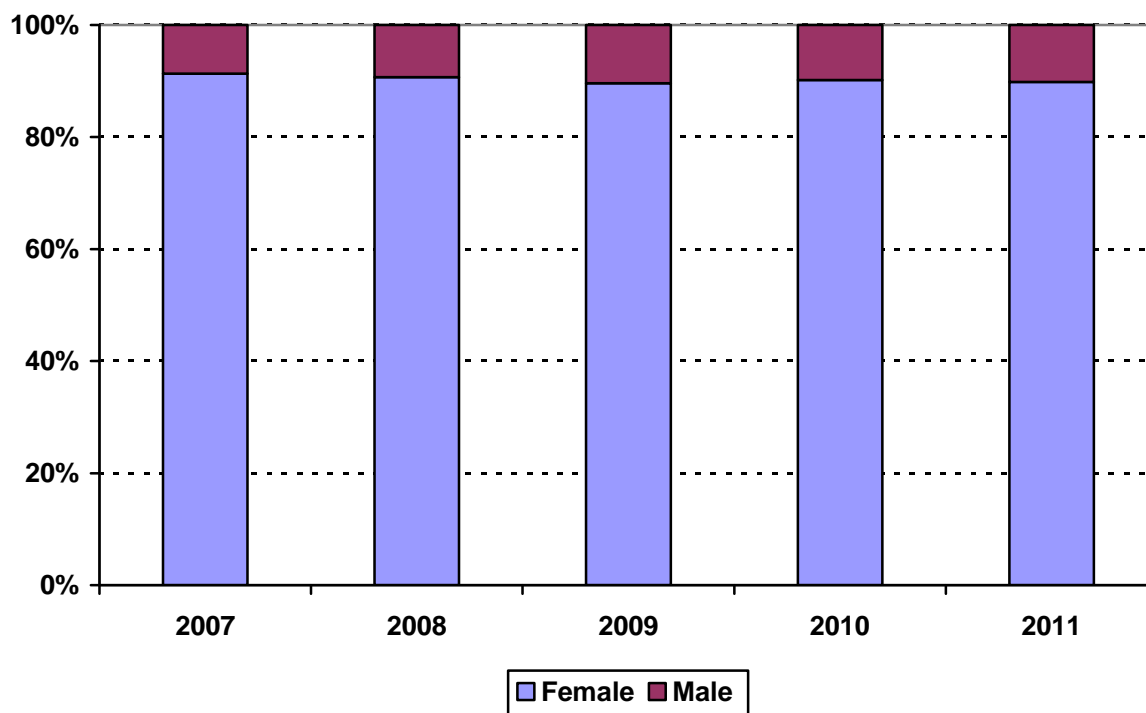
College of Nursing
Enrollment by Full- and Part-time Status
Fall 2007 to Fall 2011



Program	Code	Year								
		2007			2008			2009		
		FT	PT	%FT	FT	PT	%FT	FT	PT	%FT
Accelerated Nursing	NACC	55	6	90%	40	6	87%	55	3	95%
RN Completion BS	RNBS	24	80	23%	18	116	13%	6	125	5%
Total Undergraduates		79	86	48%	58	122	32%	61	128	32%
Family Nurse Practitioner CAS	FNPC	0	1	0%	0	3	0%	0	2	0%
Clinical Nurse Specialist MS	CNSM	4	27	13%	2	13	13%	0	17	0%
Clinical Nurse Spec. Adult MS	CNSA									
Clinical Nurse Spec. Adult MS	901				0	15	0%	0	4	0%
Clinical Nurse Spec. HRMI MS	902				2	0	100%			
Family Nurse Practitioner MS	FNPM	16	81	16%	28	92	23%	19	114	14%
Nurse Anesthesia MS	NRAN	14	18	44%	5	10	33%	7	6	54%
Nurse Midwifery MS	NRMS	9	8	53%	9	6	60%	3	14	18%
Women's Nurse Practitioner MS	WNPM	1	12	8%	3	16	16%	6	11	35%
Non-matriculated graduate	999	0	2	0%	0	3	0%	0	2	0%
Total Graduate		44	149	91%	49	158	24%	35	170	17%
Total		123	235	34%	107	280	28%	96	298	24%
Change from previous year				1%			-6%			-4%

Program	Code	Year					
		2010			2011		
		FT	PT	%FT	FT	PT	%FT
Accelerated Nursing	NACC	48	1	98%	39	0	100%
RN Completion BS	RNBS	8	140	5%	13	125	9%
Total Undergraduates		56	141	28%	52	125	29%
Family Nurse Practitioner CAS	FNPC	0	3	0%			
Clinical Nurse Specialist MS	CNSM	0	13	0%	2	15	12%
Clinical Nurse Spec. Adult MS	CNSA	0	4	0%			
Clinical Nurse Spec. Adult MS	901						
Clinical Nurse Spec. HRMI MS	902						
Family Nurse Practitioner MS	FNPM	5	105	5%	14	123	10%
Nurse Anesthesia MS	NRAN	15	3	83%	17	11	61%
Nurse Midwifery MS	NRMS	6	10	38%	7	7	50%
Women's Nurse Practitioner MS	WNPM	1	15	6%	2	18	10%
Non-matriculated	999						
Total Graduate		27	153	15%	42	174	19%
Total		83	294	22%	94	299	24%
Change from previous year				-2%			2%

College of Nursing
Enrollment by Gender
Fall 2007 to Fall 2011

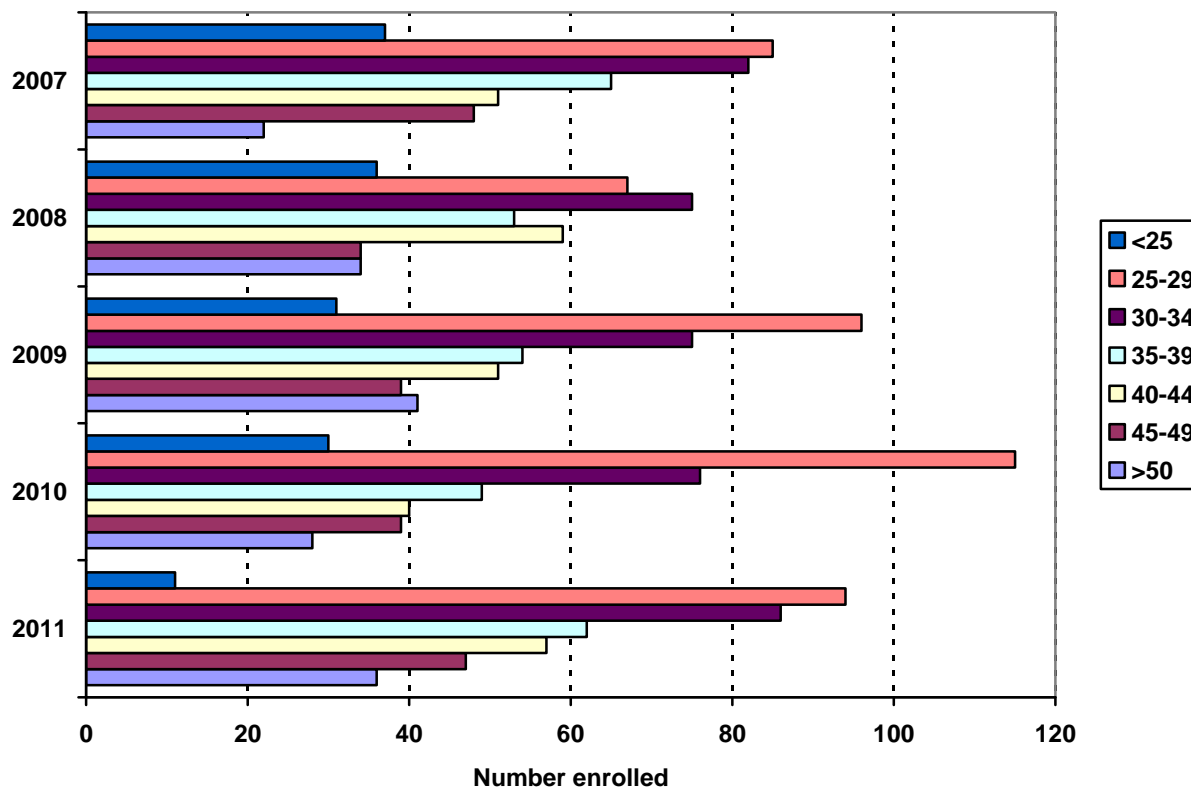


Gender	Year				
	2007	2008	2009	2010	2011
Female	327	351	353	340	353
Male	31	36	41	37	40
% Female	91%	91%	90%	90%	90%
Total	358	387	394	377	393

COLLEGE OF NURSING
ENROLLMENT BY GENDER

Program	Code	2007		2008		2009		2010		2011	
		F	M	F	M	F	M	F	M	F	M
Accelerated Nursing BS	NACC	54	7	37	9	48	10	41	8	35	4
RN Completion BS	RNBS	98	6	125	9	117	14	133	15	120	18
Non-matriculated	000	0	0	0	0	0	0				
Total Undergraduates		152	13	162	18	165	24	174	23	155	22
Family Nurse Practitioner CAS	FNPC	1	0	3	0	2	0	3	0		
Women's Nurse Practitioner CAS	930										
Clinical Nurse Specialist MS	CNSM	29	2	14	1	17	0	13	0	17	0
Clinical Nurse Spec. Adult MS	CNSA			13	2	4	0	4	0		
Clinical Nurse Spec. HRMI MS	CNSH			2	0						
Family Nurse Practitioner MS	FNPM	91	6	110	10	122	11	104	6	129	8
Nurse Anesthesia MS: Kings	940										
Nurse Anesthesia MS: Harlem	941										
Nurse Anesthesia MS	NRAN	22	10	10	5	7	6	10	8	18	10
Nurse Midwifery Completion MS	950										
Nurse Midwifery: RN MS	966										
Nurse Midwifery MS	NRMS	17	0	15	0	17	0	16	0	14	0
Women's Nurse Practitioner MS	WNPM	13	0	19	0	17	0	16	0	20	0
Non-matriculated	999	2	0	3	0	2	0				
Total Graduate		175	18	189	18	188	17	166	14	198	18
Total		327	31	351	36	353	41	340	37	353	40
Change from previous year		-5%	-31%	7%	16%	1%	14%	-4%	-10%	4%	8%

College of Nursing
Enrollment by Age Level
Fall 2007 to Fall 2011

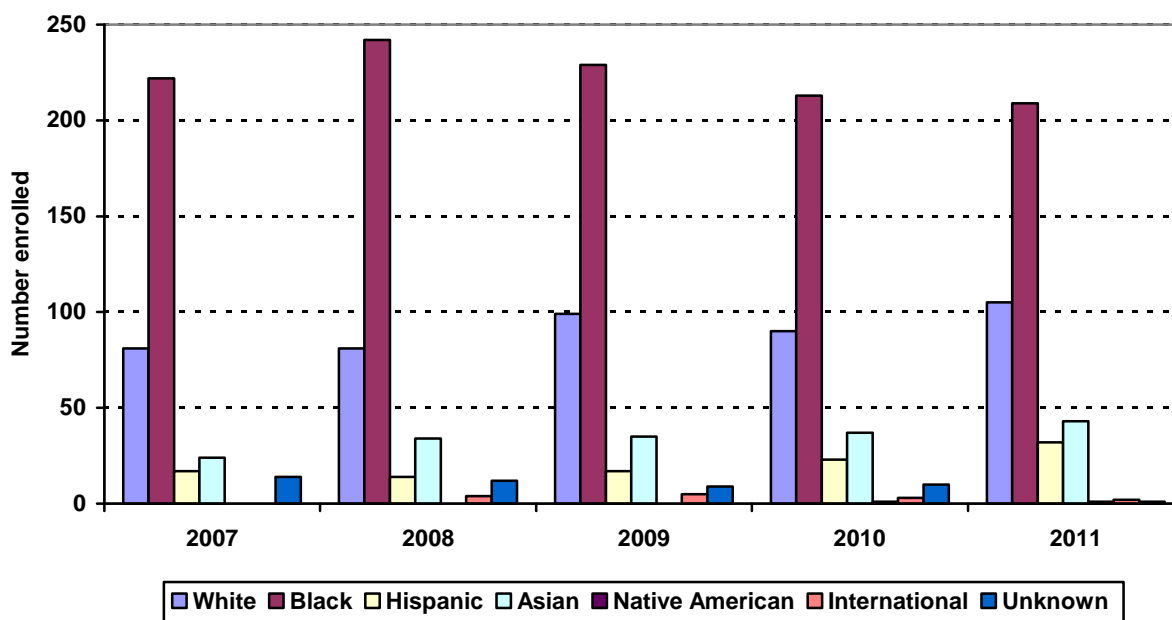


Age	Year									
	2007		2008		2009		2010		2011	
	N	%	N	%	N	%	N	%	N	%
Under 25	37	9%	36	10%	31	8%	30	8%	11	3%
25-29	85	22%	67	19%	96	25%	115	31%	94	24%
30-34	82	21%	75	21%	75	19%	76	20%	86	22%
35-39	65	17%	53	15%	54	14%	49	13%	62	16%
40-44	51	13%	59	16%	51	13%	40	11%	57	15%
45-49	48	12%	34	10%	39	10%	39	10%	47	12%
50 and over	22	6%	34	10%	41	11%	28	7%	36	9%
Age range	19-58		21-59		21-60		21-59		22-62	
Median age	34		35		34		32		35	
Total	390		358		387		377		393	

COLLEGE OF NURSING
MEDIAN AGE BY PROGRAM

Award	Program	Code	Median Age				
			2007	2008	2009	2010	2011
BS	Accelerated Nursing BS	NACC	29.0	28.0	26.0	26.0	31.0
BS	RN Completion BS	RNBS	35.0	35.5	35.0	35.0	36.0
	Non-matriculated	000					
	Total Undergraduate		33.0	33.0	31.0	33.0	34.0
CAS	Family Nurse Practitioner	FNPC	36.0	37.0	40.0	45.0	
CAS	Women's Nurse Practitioner	930					
MS	Clinical Nurse Specialist	CNSM	39.0	37.0	43.0	42.0	45.0
MS	Clinical Nurse Spec. Adult	CNSA		34.0	29.0	47.5	
MS	Clinical Nurse Spec. HRMI	902		41.0			
MS	Family Nurse Practitioner	FNPM	40.0	37.0	34.0	31.5	35.0
MS	Nurse Anesthesia : KCH	940					
MS	Nurse Anesthesia: Harlem	941					
MS	Nurse Anesthesia	NRAN	37.0	33.0	34.0	31.0	33.5
MS	Nurse Midwifery Completion	950					
MS	Nurse Midwifery: RN	966					
MS	Nurse Midwifery	NRMS	31.0	31.0	31.0	29.5	29.0
MS	Women's Nurse Practitioner	WNPM	33.0	29.0	26.0	28.0	31.0
	Non-matriculated	999	39.0	48.0	24.0		
	Total Graduate		36.0	36.0	32.0	31.0	35.0
	Total		35.0	34.0	32.0	32.0	35.0
	Change from previous year		1	-1	-2	0	3

College of Nursing
Enrollment by Ethnic Group
Fall 2007 to Fall 2011



Ethnic Group (IPEDS Categories)	Year									
	2007		2008		2009		2010		2011	
	N	%	N	%	N	%	N	%	N	%
White	81	23%	81	21%	99	25%	90	24%	105	27%
Black	222	62%	242	63%	229	58%	213	56%	209	53%
Hispanic	17	5%	14	4%	17	4%	23	6%	32	8%
Asian/Pacific Islander	24	7%	34	9%	35	9%	37	10%	43	11%
Native American							1	0%	1	<1%
International			4	1%	5	1%	3	1%	2	<1%
Unknown	14	4%	12	3%	9	2%	10	3%	1	<1%
% Black and Hispanic		67%		66%		62%		62%		61%
Total	358		387		394		377		393	

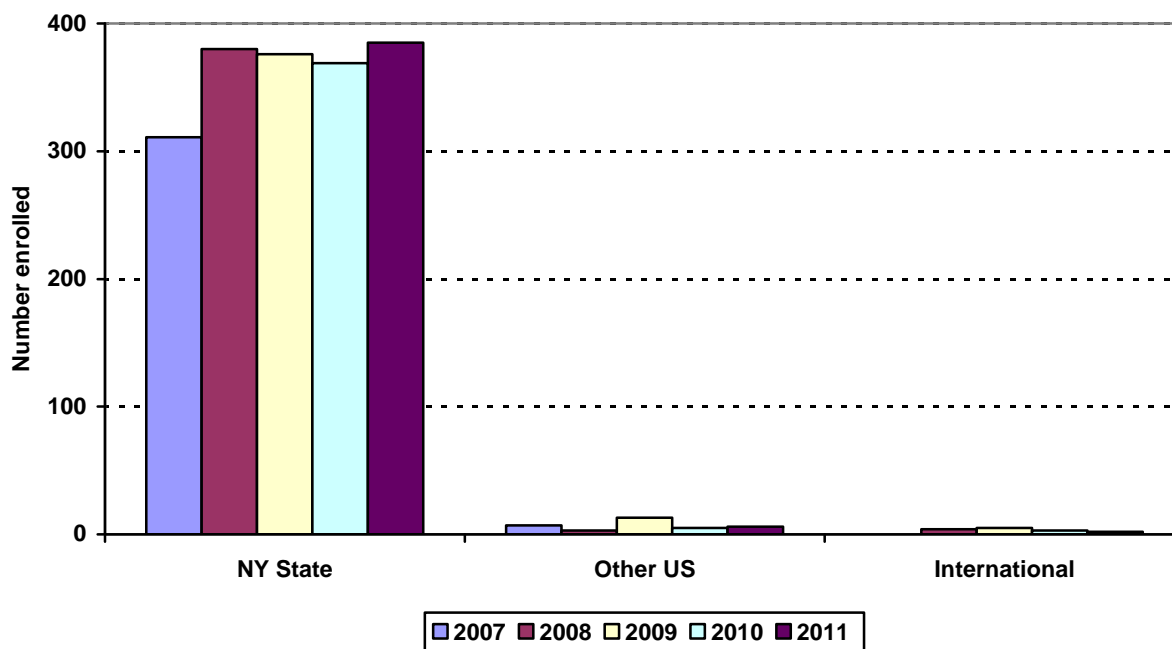
- The Integrated Postsecondary Education Data Set (IPEDS) ethnic categories are those used by the U.S. Department of Education.

ENROLLMENT BY ETHNIC GROUP BY PROGRAM
COLLEGE OF NURSING

Program	2007						2008					
	White	Black	Hispanic	Asian	International	Unknown	White	Black	Hispanic	Asian	International	Unknown
NACC	24	27	2	8	0	0	24	12	1	5	1	3
RNBS	21	64	7	5	0	7	27	82	7	12	2	4
000	0	0	0	0	0	0						
Total Und.	45	91	9	13	0	7	51	94	8	17	3	7
FNPC	0	1	0	0	0	0	1	1	0	0	0	1
930												
CNSM	2	27	0	1	0	1	0	10	0	5	0	0
CNSA							2	12	0	0	0	1
902							0	2	0	0	0	0
FNPM	18	70	2	3	0	4	19	88	2	8	1	2
940												
941												
NRAN	9	14	3	5	0	1	1	9	1	3	0	1
950												
966												
NRMS	5	10	1	1	0	0	2	12	1	0	0	0
WNPM	2	7	2	1	0	1	5	11	2	1	0	0
999	0	2	0	0	0	0	0	3	0	0	0	0
Total Grad.	36	131	8	11	0	7	30	148	6	17	1	5
Total	81	222	17	24	0	14	81	242	14	34	4	12

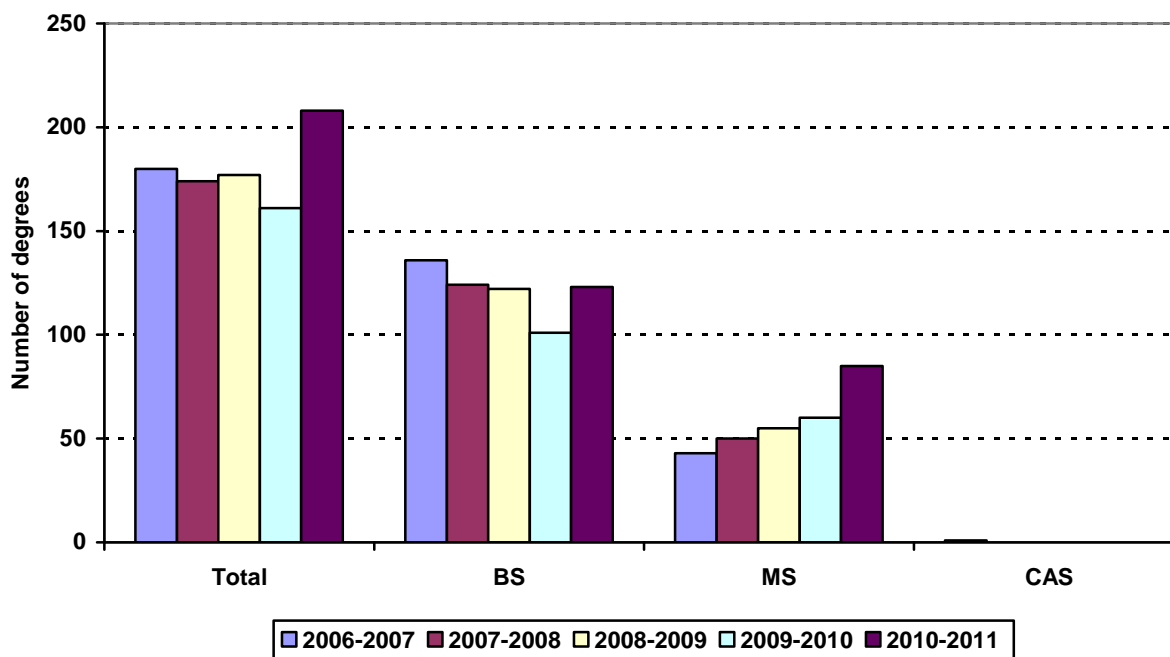
Program	2009						2010						2011						
	White	Black	Hispanic	Asian	International	Unknown	White	Black	Hispanic	Asian	International	Unknown	White	Black	Hispanic	Asian	Native American	International	Unknown
NACC	31	13	7	4	2	1	29	8	2	6	1	3	23	6	4	6	0	0	0
RNBS	31	75	5	13	3	4	30	90	12	12	2	2	29	78	18	12	0	1	0
000																			
Total Undergrad	62	88	12	17	5	5	59	98	14	18	3	5	52	84	22	18	0	1	0
FNPC	0	1	0	0	0	1	0	2	1	0	0	0							
930																			
CNSM	0	17	0	0	0	0	1	12	0	0	0	0	2	15	0	0	0	0	0
CNSA	1	3	0	0	0	0	0	4	0	0	0	0							
902																			
FNPM	25	90	3	14	0	1	18	73	4	13	0	2	31	82	7	15	0	1	1
940																			
941																			
NRAN	3	6	1	3	0	0	4	5	1	6	0	1	8	9	1	9	1	0	0
950																			
966																			
NRMS	5	12	0	0	0	0	5	8	1	0	0	2	9	5	0	0	0	0	0
WNPM	3	11	1	1	0	1	3	11	2	0	0	0	3	14	2	1	0	0	0
999																			
Total Grad.	37	140	5	18	0	3	31	115	9	19	0	5	53	125	10	25	1	1	1
Total	99	229	17	35	5	9	90	213	23	37	3	10	105	209	32	43	1	2	1

College of Nursing
Enrollment by Permanent Residence
Fall 2007 to Fall 2011



Residency	Year									
	2007		2008		2009		2010		2011	
	N	% of total	N	% of total	N	% of total	N	% of total	N	% of total
New York State	311	87%	380	98%	376	95%	369	98%	385	98%
New York City	304	85%	331	86%	329	84%	314	83%	328	83%
Bronx	16	4%	16	4%	19	5%	12	3%	11	3%
Kings (Brooklyn)	193	54%	211	55%	198	50%	180	48%	200	51%
Manhattan	19	5%	9	2%	16	4%	21	6%	17	4%
Queens	71	20%	87	22%	89	23%	91	24%	90	23%
Richmond (Staten I.)	5	1%	8	2%	7	2%	10	3%	10	3%
Other U.S.	7	2%	3	<1%	13	3%	5	1%	6	2%
International	0	0%	4	1%	5	1%	3	1%	2	<1%
Total	358		387		394		377		393	

Degrees Granted by Level
College of Nursing
2006-2007 to 2010-2011



Degrees	Code	Year				
		2006-07	2007-08	2008-09	2009-10	2010-11
Generic-Nursing BS	291					
RN Completion BS	RNBS	44	82	67	56	66
Accelerated Nursing	NACC	92	42	55	45	57
Family Nurse Practitioner CAS	FNPC	1		0		
Women's Nurse Practitioner CAS	930					
Clinical Nurse Specialist MS	CNSM				2	5
Clinical Nurse Spec. Adult MS	CNSA	7	2	3	7	3
Clinical Nurse Spec. HRMI MS	CNSH		1	1	2	
Family Nurse Practitioner MS	FNPM	13	26	32	32	64
Nurse Anesthesia MS: Kings	940	10				
Nurse Anesthesia MS: Harlem	941	11				
Nurse Anesthesia MS	NRAN		16	14	5	
Nurse Midwifery Completion MS	950					
Nurse Midwifery: RN MS	966	2				
Nurse Midwifery MS	NRMS		3	3	8	5
Women's Nurse Practitioner MS	WNPM		2	2	4	8
Total		180	174	177	161	208
Change from previous year		1%	-3%	2%	-9%	29%

COLLEGE OF NURSING
DEGREES EARNED BY ETHNIC GROUP

Ethnic Group	Year				
	2006-07	2007-08	2008-09	2009-10	2010-11
White	36	48	46	44	62
% change	-8%	33%	-4%	-4%	41%
Black	116	98	101	86	115
% change	13%	-16%	3%	-15%	34%
Hispanic	17	9	10	6	14
% change	143%	-47%	11%	-40%	133%
Asian	10	11	18	15	15
% change	-52%	10%	64%	-17%	0%
Native American	0	0	0	0	0
% change					
International	0	0	0	0	0
% change	-100%				
Unknown	1	8	2	10	2
% change	-80%	700%	-75%	400%	-80%
Total	180	174	177	161	208
Change from previous year	1%	-3%	2%	-9%	29%