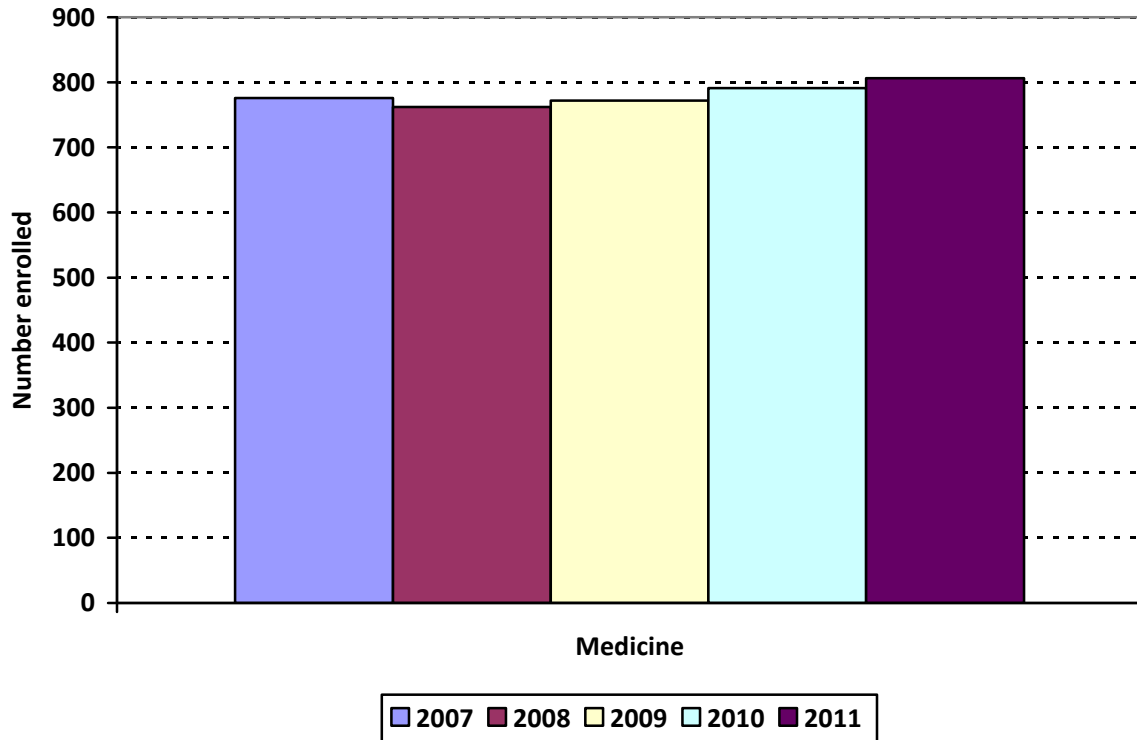


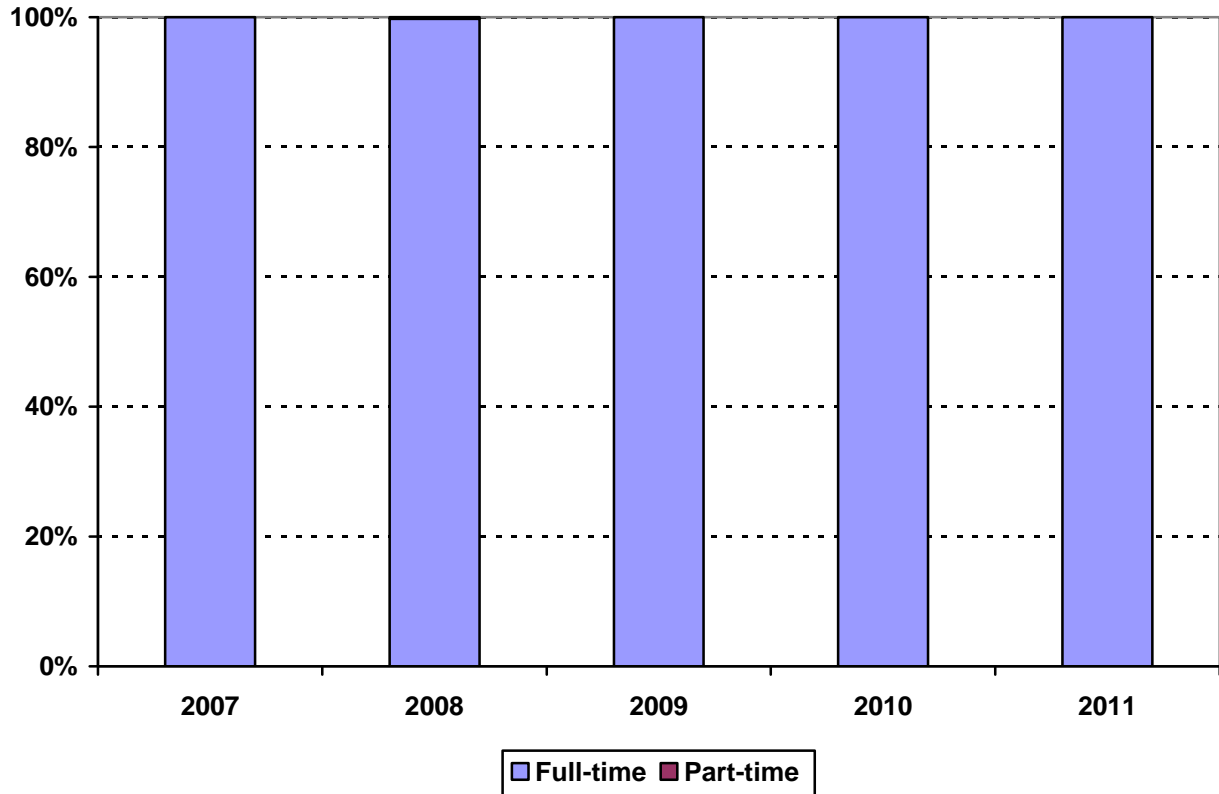
College of Medicine Enrollment Fall 2007 to Fall 2011



College of Medicine MD and MD/MPH	Year				
	2007	2008	2009	2010	2011
New students	170	185	193	182	184
Continuing students	606	577	579	588	622
Total	776	762	772	791	806
Change from previous year	0%	-2%	1%	2%	2%

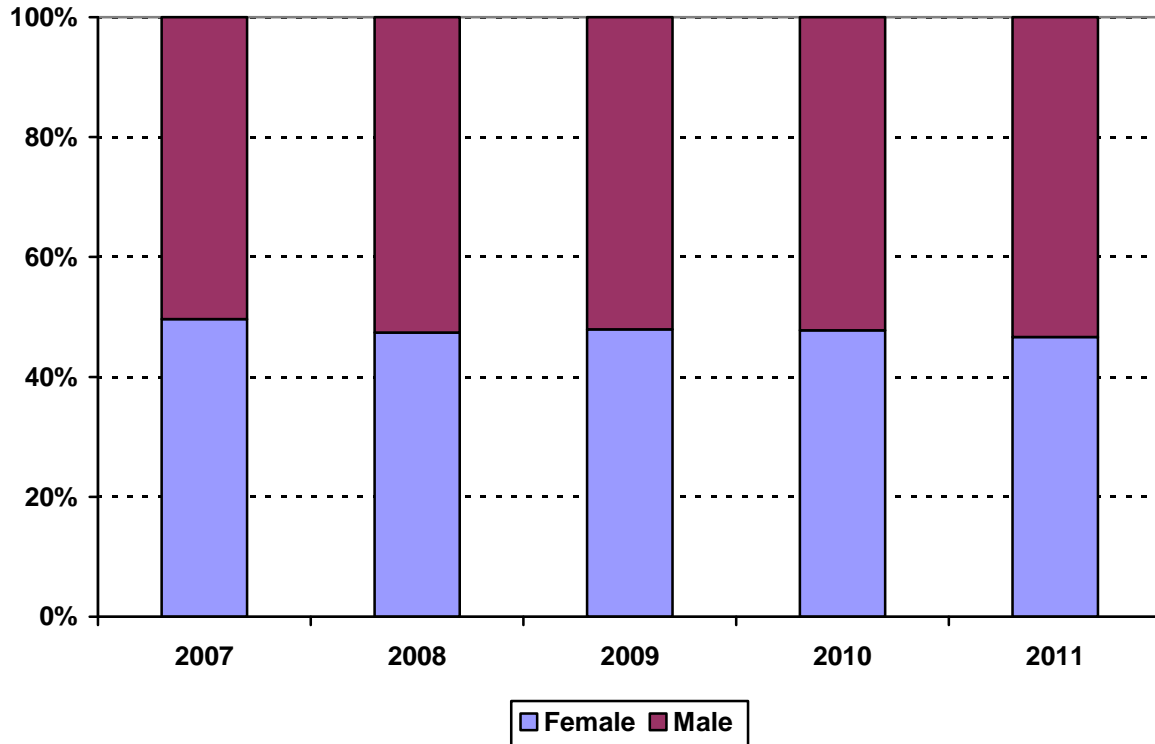
- The totals include students concurrently enrolled in the MPH Program, 31 in 2007, 27 in 2008, 24 in 2009, 24 in 2010, and 22 in 2011.

College of Medicine
Enrollment by Full- and Part-time Status
 Fall 2007 to Fall 2011



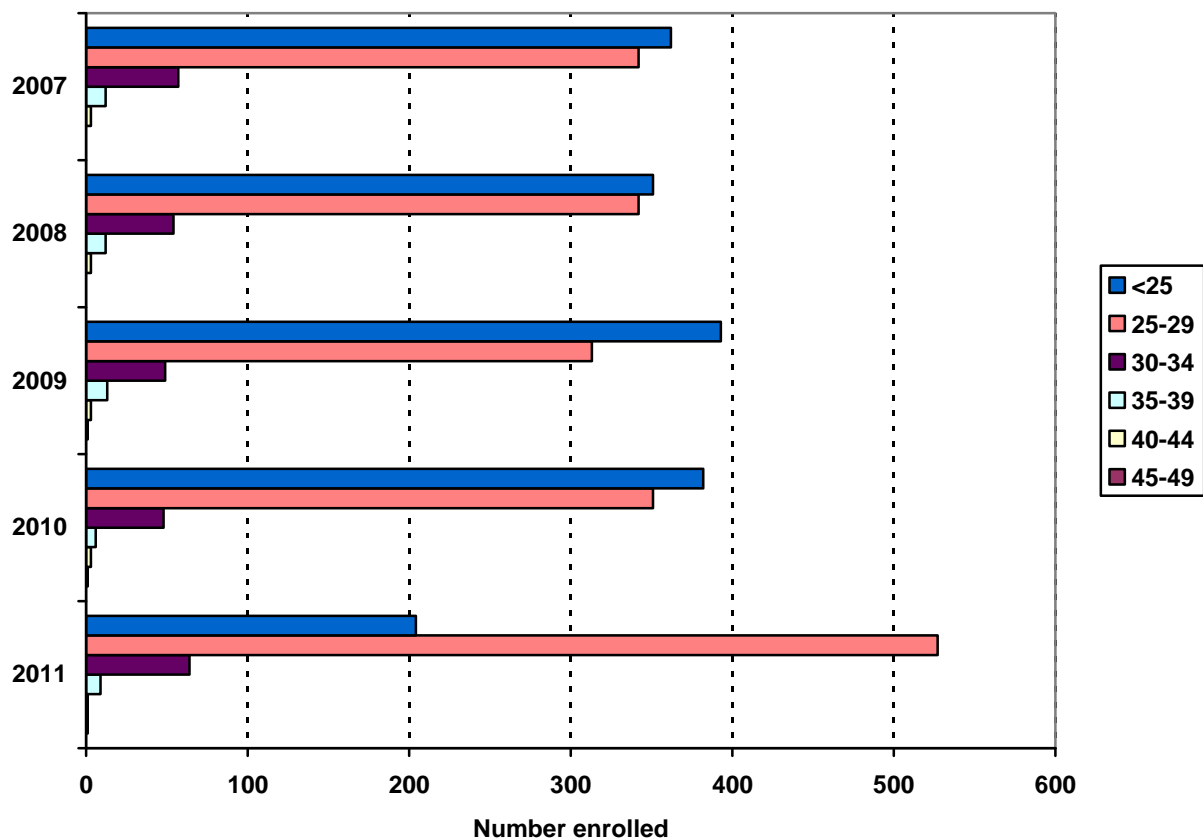
Enrollment Levels	Year				
	2007	2008	2009	2010	2011
Full-time	776	760	772	791	806
Part-time	0	2	0	0	0
% Full-time	100%	99%	100%	100%	100%
Total	776	762	772	791	806

**College of Medicine
Enrollment by Gender**
Fall 2007 to Fall 2011



Gender	Year			Year			Year			Year			Year		
	2007			2008			2009			2010			2011		
	F	M	%F	F	M	%F	F	M	%F	F	M	%F	F	M	%F
New 1 st year	85	85	50%	87	98	47%	93	100	48%	77	105	42%	82	102	45%
Continuing	300	306	50%	274	303	47%	277	302	48%	301	308	49%	294	328	47%
Total	385	391	50%	361	401	47%	370	402	48%	378	413	48%	376	430	47%
Change from previous year			0%			-3%			1%			0%			-1%

**College of Medicine
Enrollment by Age Level
Fall 2007 to Fall 2011**



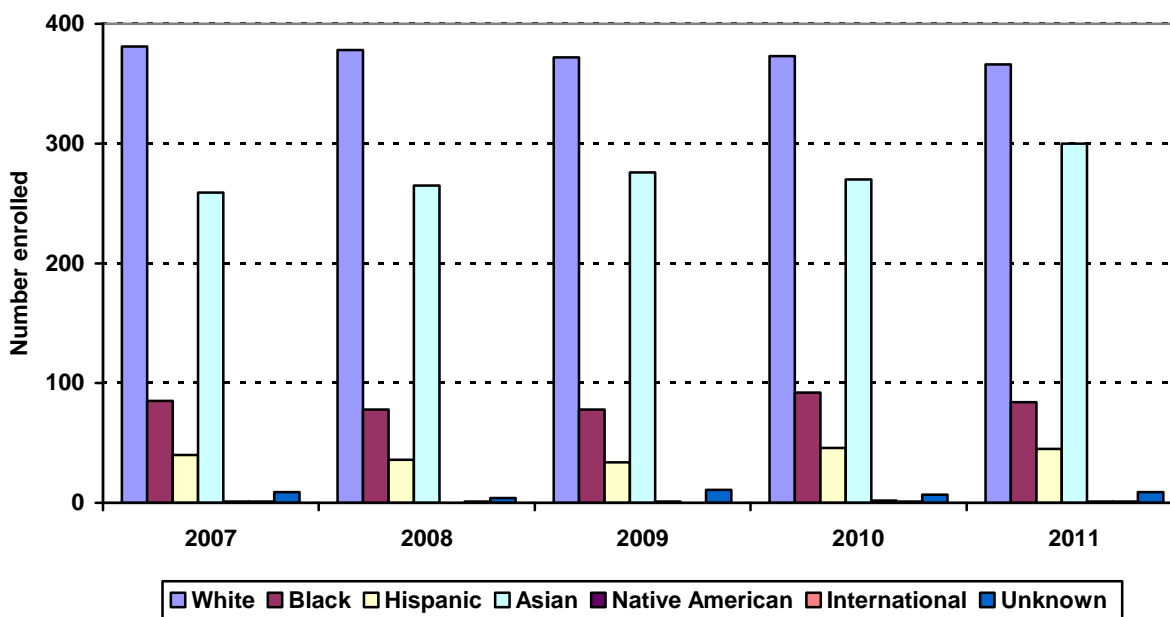
All Medical Students

Age	Year									
	2007		2008		2009		2010		2011	
	N	%	N	%	N	%	N	%	N	%
Under 25	362	47%	351	46%	393	51%	382	48%	204	25%
25-29	342	44%	342	45%	313	41%	351	44%	527	65%
30-34	57	7%	54	7%	49	6%	48	6%	64	8%
35-39	12	2%	12	2%	13	2%	6	1%	9	1%
40-44	3	<1%	3	<1%	3	<1%	3	<1%	1	<1%
45-49					1	<1%	1	<1%	1	<1%
50 and over										
Median age	22		23		24		25		26	
Age range	19-43		20-40		20-45		21-46		22-45	
Total	776		762		772		791		806	

New First Year Medical Students
Enrollment by Age Level

Age	Year									
	2007		2008		2009		2010		2011	
	N	%	N	%	N	%	N	%	N	%
Under 25	127	75%	135	73%	159	82%	147	81%	111	60%
25-29	37	22%	44	24%	25	13%	30	16%	64	35%
30-34	2	1%	4	2%	7	4%	5	3%	8	4%
35-39	3	2%	1	<1%	2	1%			1	1%
40-44	1	1%	1	<1%						
45-49										
50 and over										
Median age	23		23		23		23		27	
Age range	19-43		20-40		20-37		21-31		22-37	
Total	170		185		193		182		184	

College of Medicine Enrollment by Ethnic Group Fall 2007 to Fall 2011



*Native American students numbered 1 in 2007, 0 in 2008, 1 in 2009, 2 in 2010, and 1 in 2011.

All Medical Students

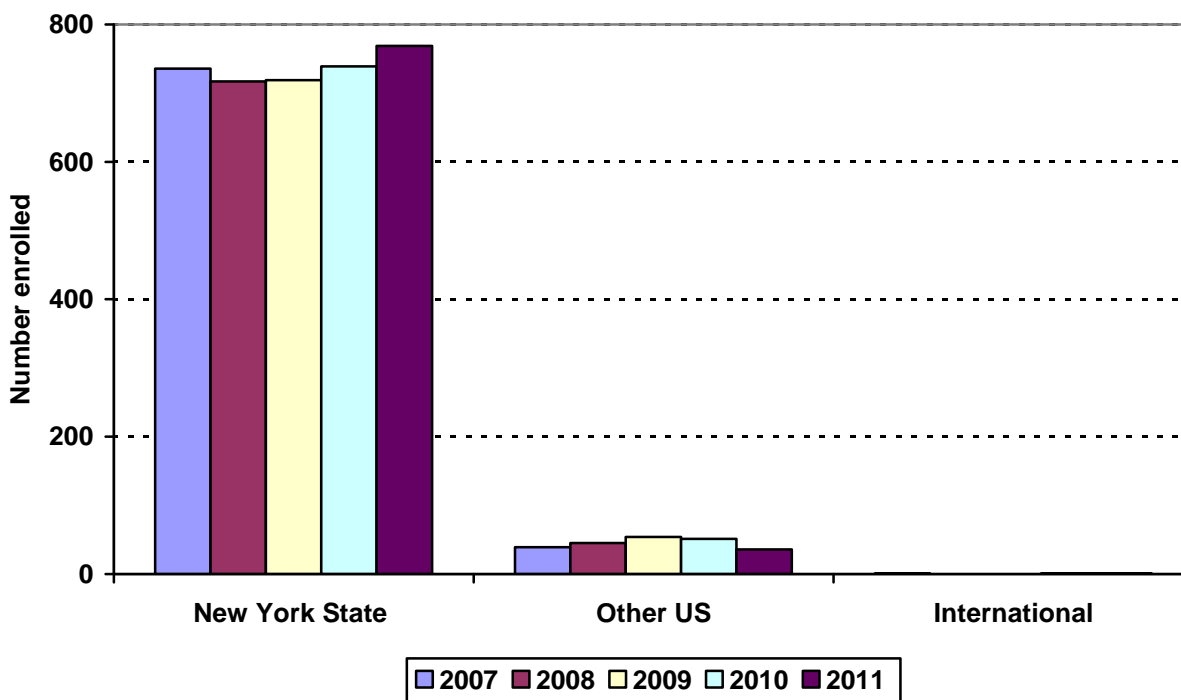
Ethnic Group (IPEDS Categories)	Year									
	2007		2008		2009		2010		2011	
	N	%	N	%	N	%	N	%	N	%
White	381	49%	378	50%	372	48%	373	47%	366	45%
Black	85	11%	78	10%	78	10%	92	12%	84	10%
Hispanic	40	5%	36	5%	34	4%	46	6%	45	6%
Asian/Pacific Islander	259	33%	265	35%	276	36%	270	34%	300	37%
Native American	1	<1%	0		1	<1%	2	<1%	1	<1%
International	1	<1%	1	<1%	0	0%	1	<1%	1	<1%
Unknown	9	1%	4	1%	11	1%	7	1%	9	1%
<i>Black and Hispanic</i>	125	16%	114	15%	112	14%	138	17%	129	16%
Total	776		762		772		791		806	

- The Integrated Postsecondary Education Data Set (IPEDS) ethnic categories are those used by the U.S. Department of Education.

New First Year Medical Students Enrollment by Ethnic Group

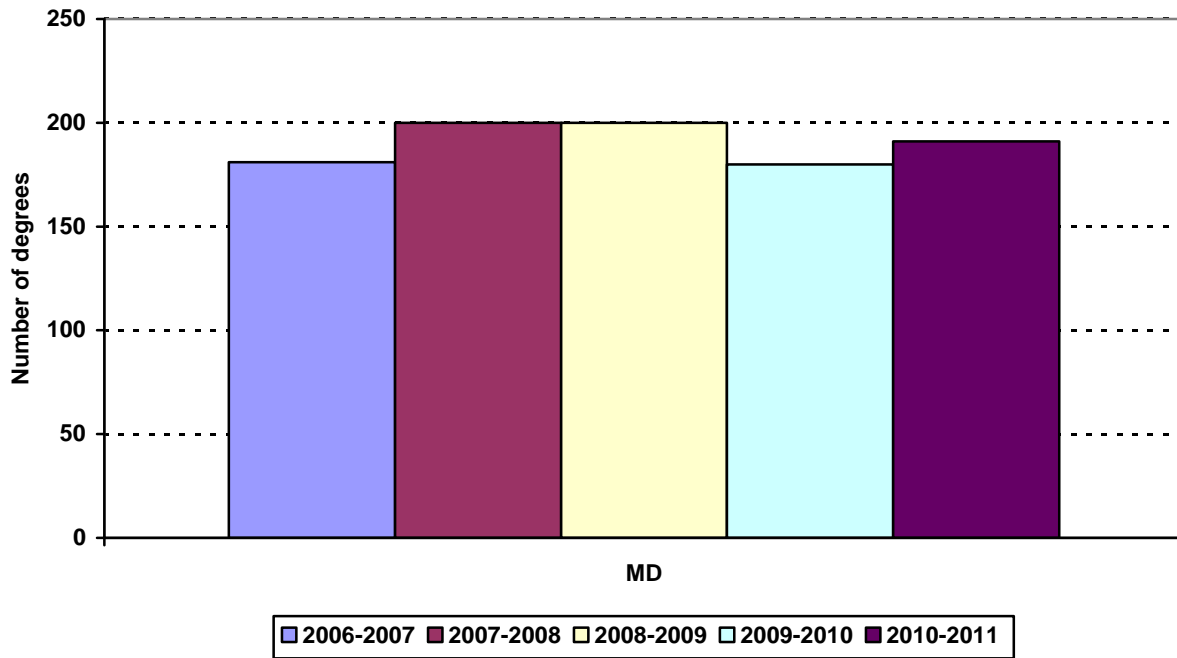
Ethnic Group (IPEDS Categories)	Year									
	2007		2008		2009		2010		2011	
	N	%	N	%	N	%	N	%	N	%
White	84	49%	97	52%	88	46%	86	47%	70	38%
Black	17	10%	16	9%	20	10%	19	10%	10	5%
Hispanic	12	7%	6	3%	5	3%	8	4%	10	5%
Asian/Pacific Islander	51	30%	66	36%	75	39%	66	36%	66	36%
Native American	1	1%					1	1%		
International										
Unknown	5	3%	0	0%	5	3%	2	1%	28	15%
<i>Black and Hispanic</i>	29	17%	22	12%	25	13%	27	15%	20	11%
Total	170		185		193		182		184	

College of Medicine
Enrollment by Permanent Residence
 Fall 2007 to Fall 2011



Residency	Year									
	2007		2008		2009		2010		2011	
	N	% of total	N	% of total	N	% of total	N	% of total	N	% of total
New York State	736	95%	717	94%	719	93%	739	93%	769	95%
New York City	476	61%	476	62%	493	64%	518	65%	547	68%
Bronx	13	2%	20	3%	26	3%	20	3%	18	2%
Kings (Brooklyn)	259	33%	264	35%	265	34%	283	36%	301	37%
Manhattan	59	8%	52	7%	53	7%	56	7%	58	7%
Queens	119	15%	118	15%	120	16%	121	15%	126	16%
Richmond (Staten I.)	26	3%	22	3%	29	4%	38	5%	44	5%
Other U.S.	39	5%	45	6%	54	7%	51	6%	36	4%
International	1	<1%	0	0%	0	0%	1	<1%	1	<1%
Total	776		762		772		791		806	

College of Medicine
Degrees Granted by Level
 Fiscal Years 2006-2007 to 2010-2011



Degrees granted during July 1 (year 1) – June 30 (year 2) period.

Degree Level	Year				
	2006-2007	2007-2008	2008-2009	2009-2010	2010-2011
Doctor of Medicine	181	200	201	180	191
Change from previous year	-9%	10%	1%	-10%	6%

DEGREES EARNED BY ETHNIC GROUP
COLLEGE OF MEDICINE

Ethnic Group	Year				
	2006-2007	2007-2008	2008-2009	2009-2010	2010-2011
White	86	97	97	91	96
% change	-8%	11%	0%	-6%	5%
Black	20	23	20	13	26
% change	-9%	13%	-13%	-35%	100%
Hispanic	12	10	11	5	11
% change	20%	-20%	10%	-55%	120%
Asian	61	63	72	69	56
% change	-13%	3%	14%	-4%	-19%
Native American	0	0	0	0	1
International	0	0	0	0	0
% change					
Unknown	2	1	1	2	1
% change	-33%	-100%	0%	100%	-50%
Total	181	200	201	180	191
Change from previous year	-9%	7%	1%	-10%	6%