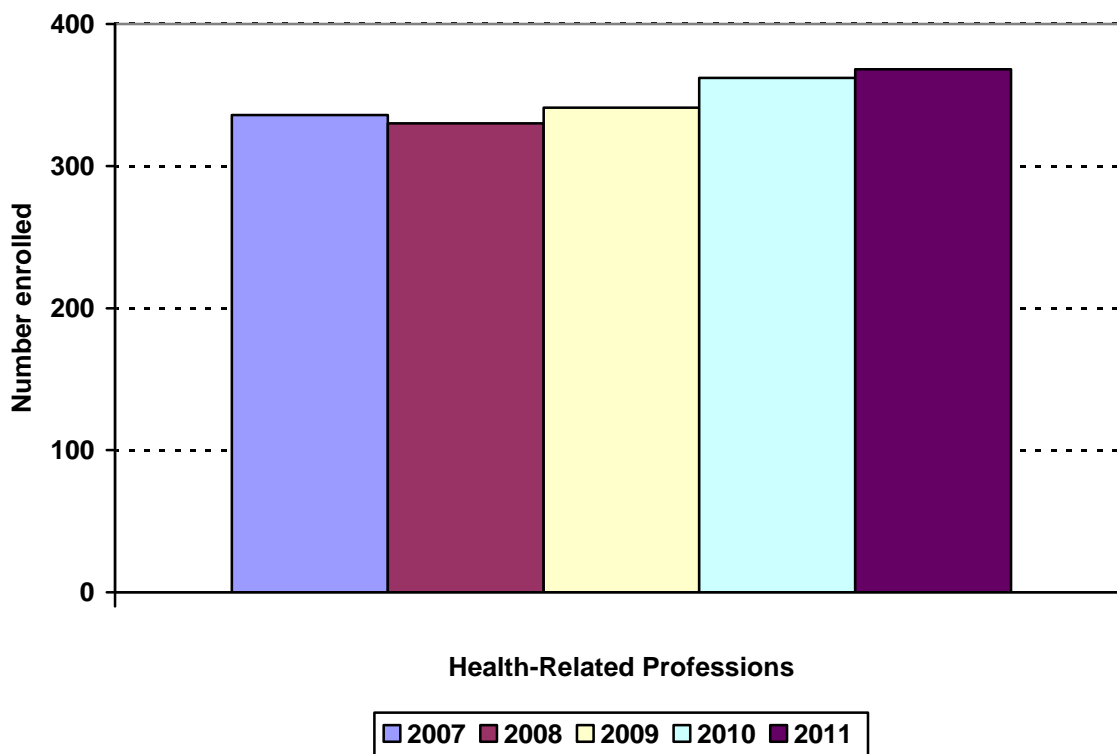
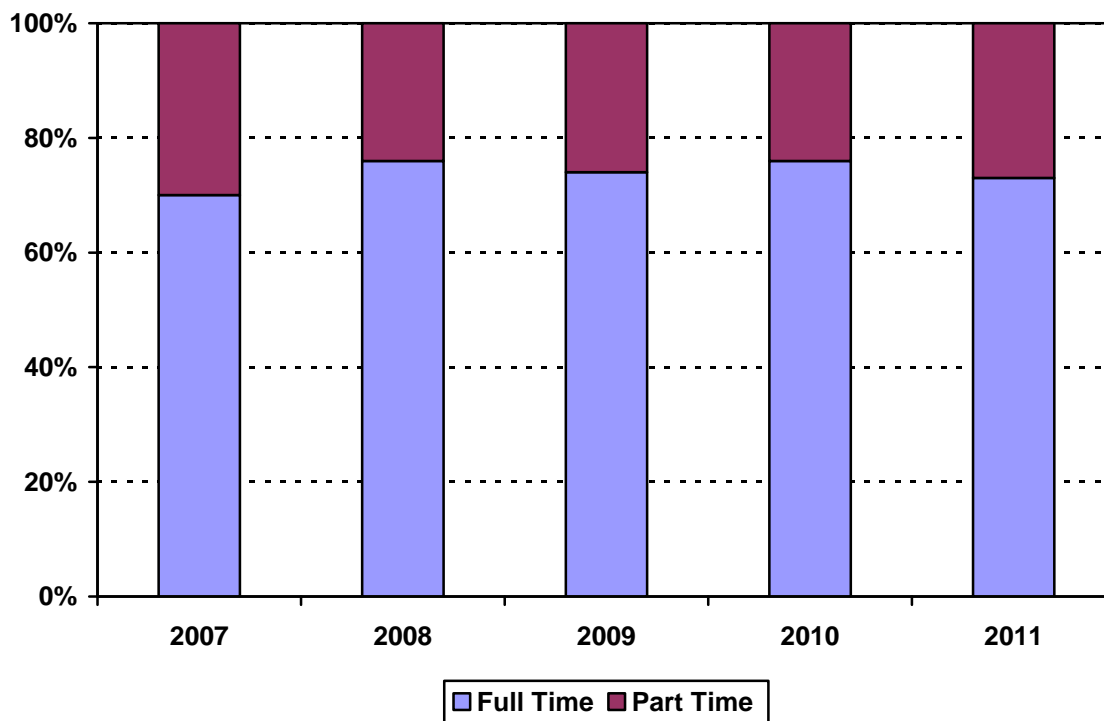


## College of Health Related Professions Enrollment Fall 2007 to Fall 2011



Award	Program	Code	Year				
			2007	2008	2009	2010	2011
BS	Diagnostic Medical Imaging	DIMI	51	52	48	47	56
BS	Physical Therapy (BS and BS/MS)	PTBS					
BS	Physical Therapy (BS and BS/DPT)	PTBS	26	21	23	22	26
BS	Physician's Assistant	PABS	66	71	69	76	75
	Non-matriculated	000	1	0		1	
	<b>Total Undergraduate</b>		<b>144</b>	<b>144</b>	<b>140</b>	<b>146</b>	<b>157</b>
CAS	Midwifery	MWIC		1		1	
CAS	Midwifery- Direct Entry	MWDC		1	1		
CERT	Midwifery- RN	965					
MS	Midwifery- Direct Entry	MWDM		3	2	1	
MS	Midwifery (MS completion)	MWCM		3			
MS	Midwifery	MWIF	17	16	20	26	27
MS	Occupational Therapy	OTMS	94	90	96	101	100
MS	Physical Therapy (BS and BS/MS)	PTMS	15	3			
MS	Medical Informatics	MIMS	42	31	38	45	44
DPT	Doctor of Physical Therapy	DPT	16	38	42	42	40
	Non-matriculated	999	5	0			
	<b>Total Graduate</b>		<b>192</b>	<b>186</b>	<b>201</b>	<b>216</b>	<b>211</b>
	<b>Total</b>		<b>336</b>	<b>330</b>	<b>341</b>	<b>362</b>	<b>368</b>
	Change from previous year		5%	-2%	3%	6%	2%

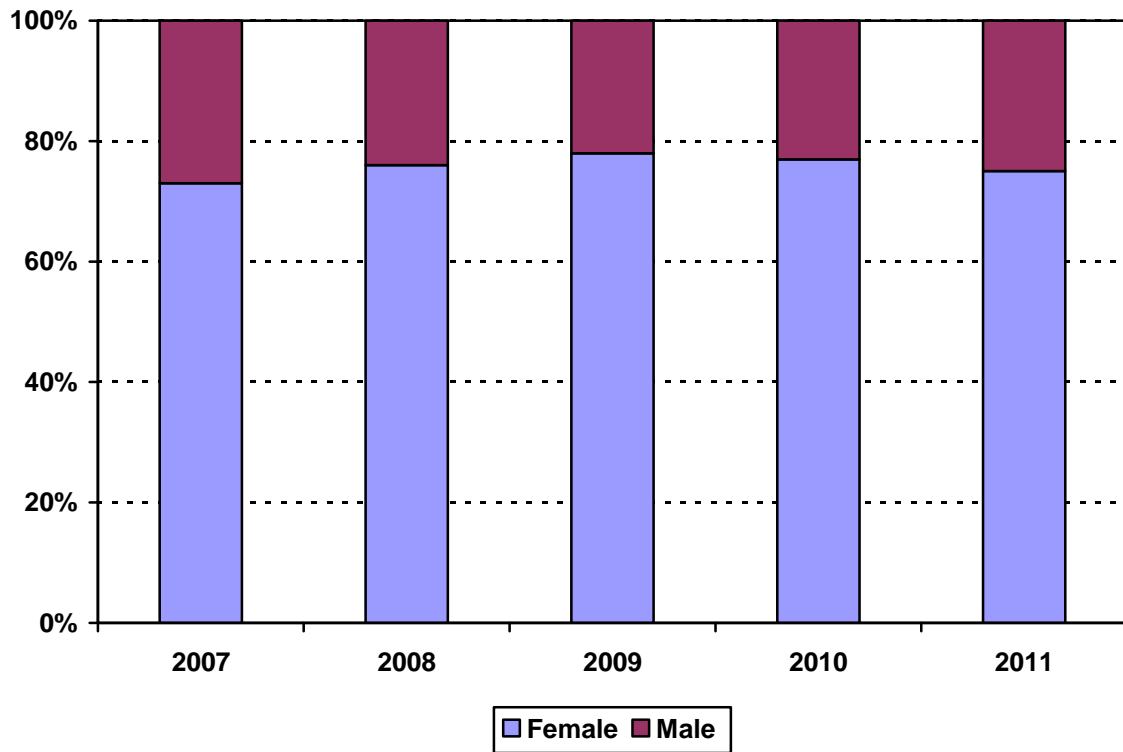
College of Health Related Professions  
Enrollment by Full-time and Part-time Status  
Fall 2007 to Fall 2011



Program	Code	Year					
		2007			2008		
		FT	PT	%FT	FT	PT	%FT
Diagnostic Medical Imaging	DIMI	41	10	80%	40	12	77%
Physical Therapy: BS/DPT	PTBS	20	6	77%	20	1	95%
Physician's Assistant	PABS	56	10	85%	66	5	93%
Non-matriculated	000	0	1	0%			
<b>Total Undergraduate</b>		<b>117</b>	<b>27</b>	<b>81%</b>	<b>126</b>	<b>18</b>	<b>88%</b>
Midwifery Certificate	MWIC				0	1	0%
Midwifery Direct Entry CAS	MWDC				0	1	0%
Midwifery- Direct Entry MS	MWDM				2	1	67%
Midwifery (MS completion)	MWCM	8	9	47%	0	3	0%
Midwifery	MWIF				6	10	38%
Occupational Therapy	OTMS	55	39	59%	64	26	71%
Physical Therapy (BS/MS)	PTMS	14	1	93%	3	0	100%
Medical Informatics	MIMS	23	19	55%	13	18	42%
Doctor of Physical Therapy	DPT	16	0	100%	37	1	97%
Non-matriculated	999	0	5	0%			
<b>Total Graduate</b>		<b>117</b>	<b>75</b>	<b>61%</b>	<b>125</b>	<b>61</b>	<b>67%</b>
<b>Total</b>		<b>234</b>	<b>102</b>	<b>70%</b>	<b>251</b>	<b>79</b>	<b>76%</b>
Change from previous year				-5%			6%

Program	Code	Year								
		2009			2010			2011		
		FT	PT	%FT	FT	PT	%FT	FT	PT	%FT
Diagnostic Medical Imaging	DIMI	43	5	90%	43	4	91%	50	6	89%
Physical Therapy: BS/DPT	PTBS	22	1	96%	21	1	95%	23	3	88%
Physician's Assistant	PABS	61	8	88%	73	3	96%	59	16	79%
Non-matriculated	000				0	1	0%			
<b>Total Undergraduate</b>		<b>126</b>	<b>14</b>	<b>90%</b>	<b>137</b>	<b>9</b>	<b>94%</b>	<b>132</b>	<b>25</b>	<b>84%</b>
Midwifery Certificate	MWIC	0	1	0%	1	0	100%			
Midwifery Direct Entry CAS	MWDC	0	1	0%						
Midwifery- Direct Entry MS	MWDM	1	1	50%	0	1	0%			
Midwifery-RN MS	MWRM	0	1	0%						
Midwifery- Direct Entry MS	MWDM									
Midwifery (MS completion)	MWCM									
Midwifery	MWIF	4	16	20%	9	17	35%	12	15	44%
Occupational Therapy	OTMS	64	32	67%	66	35	65%	66	34	66%
Physical Therapy (BS and BS/MS)	PTMS									
Medical Informatics	MIMS	19	19	50%	21	24	47%	23	21	52%
Doctor of Physical Therapy	DPT	40	2	95%	40	2	95%	37	3	93%
Non-matriculated	999									
<b>Total Graduate</b>		<b>128</b>	<b>73</b>	<b>64%</b>	<b>137</b>	<b>79</b>	<b>63%</b>	<b>138</b>	<b>73</b>	<b>65%</b>
<b>Total</b>		<b>254</b>	<b>87</b>	<b>74%</b>	<b>274</b>	<b>88</b>	<b>76%</b>	<b>270</b>	<b>98</b>	<b>73%</b>
Change from previous year				-2%			-2%			-4%

College of Health Related Professions  
Enrollment by Gender  
Fall 2007 to Fall 2011

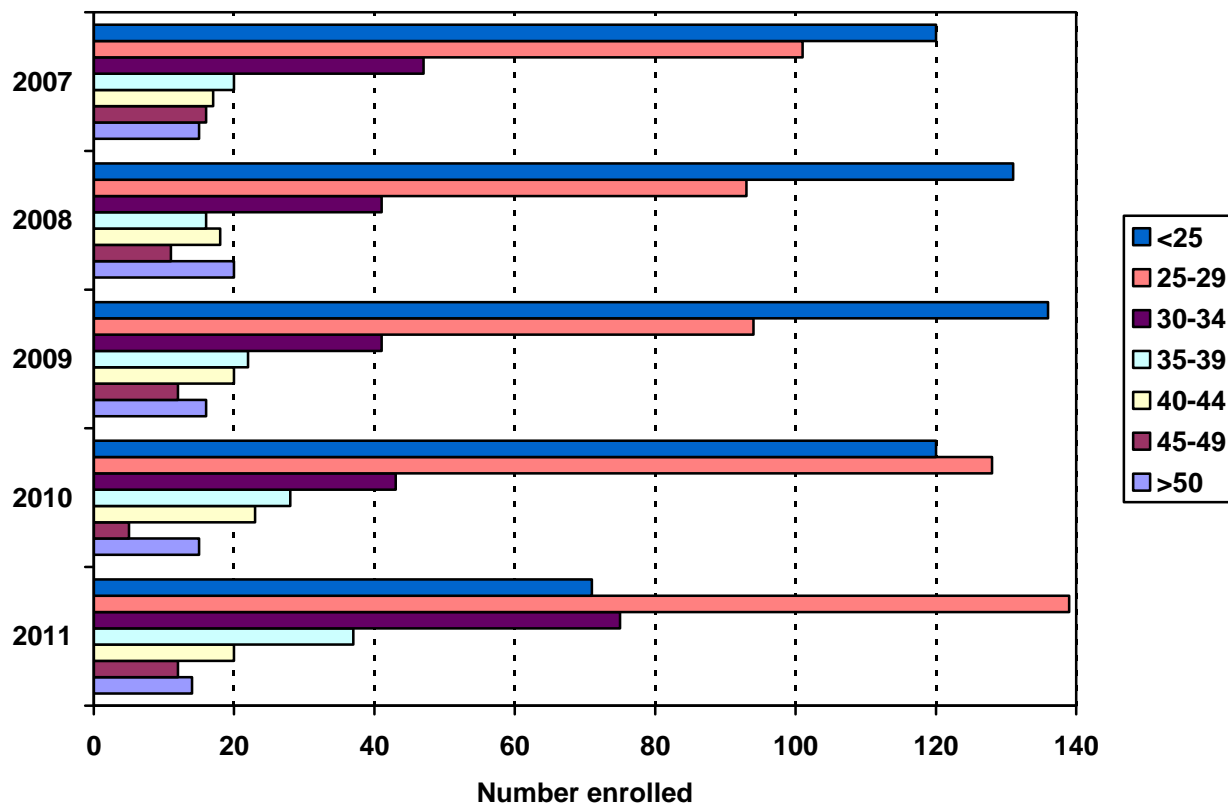


Gender	Year				
	2007	2008	2009	2010	2011
Female	246	250	265	277	276
Male	90	80	76	85	92
% Female	73%	76%	78%	77%	75%
<b>Total</b>	<b>336</b>	<b>330</b>	<b>341</b>	<b>362</b>	<b>368</b>

ENROLLMENT BY GENDER  
COLLEGE OF HEALTH RELATED PROFESSIONS

Award	Program	Code	2007		2008		2009		2010		2011	
			F	M	F	M	F	M	F	M	F	M
BS	Diagnostic Medical Imaging	DIMI	44	7	45	7	42	6	42	5	50	6
BS	Physical Therapy: BS/DPT	PTBS	13	13	14	7	16	7	10	12	15	11
BS	Physician's Assistant	PABS	48	18	48	23	52	17	59	17	50	25
	Non-matriculated	000	1	0					0	1		
	<b>Total Undergraduate</b>		<b>106</b>	<b>38</b>	<b>107</b>	<b>37</b>	<b>110</b>	<b>30</b>	<b>111</b>	<b>35</b>	<b>115</b>	<b>42</b>
CAS	Midwifery- Direct Entry	MWDC			1	0	1	0				
CAS	Midwifery- RN	MWIC			1	0	1	0	1	0		
MS	Medical Informatics	MIMS	17	25	18	13	21	17	23	22	23	21
MS	Midwifery- Direct Entry	MWDM			3	0	2	0	1	0		
MS	Midwifery-RN MS	MWRM					1	0				
MS	Midwifery (MS completion)	MWCM			3	0						
MS	Midwifery	MWIF	17	0	16	0	20	0	26	0	27	0
MS	Occupational Therapy	OTMS	83	11	80	10	86	10	90	11	91	9
MS	Physical Therapy (BS/MS)	PTMS	8	7	0	3						
DPT	Doctor of Physical Therapy	DPT	9	7	21	17	23	19	25	17	20	20
	Non-matriculated	999	3	2								
	<b>Total Graduate</b>		<b>140</b>	<b>52</b>	<b>143</b>	<b>43</b>	<b>155</b>	<b>46</b>	<b>166</b>	<b>50</b>	<b>161</b>	<b>50</b>
	<b>Total</b>		<b>246</b>	<b>90</b>	<b>250</b>	<b>80</b>	<b>265</b>	<b>76</b>	<b>277</b>	<b>85</b>	<b>276</b>	<b>92</b>
	Change from previous year		4%	8%	2%	-11%	8%	7%	5%	12%	<-1%	8%

### Total Enrollment by Age Level Fall 2007 to Fall 2011

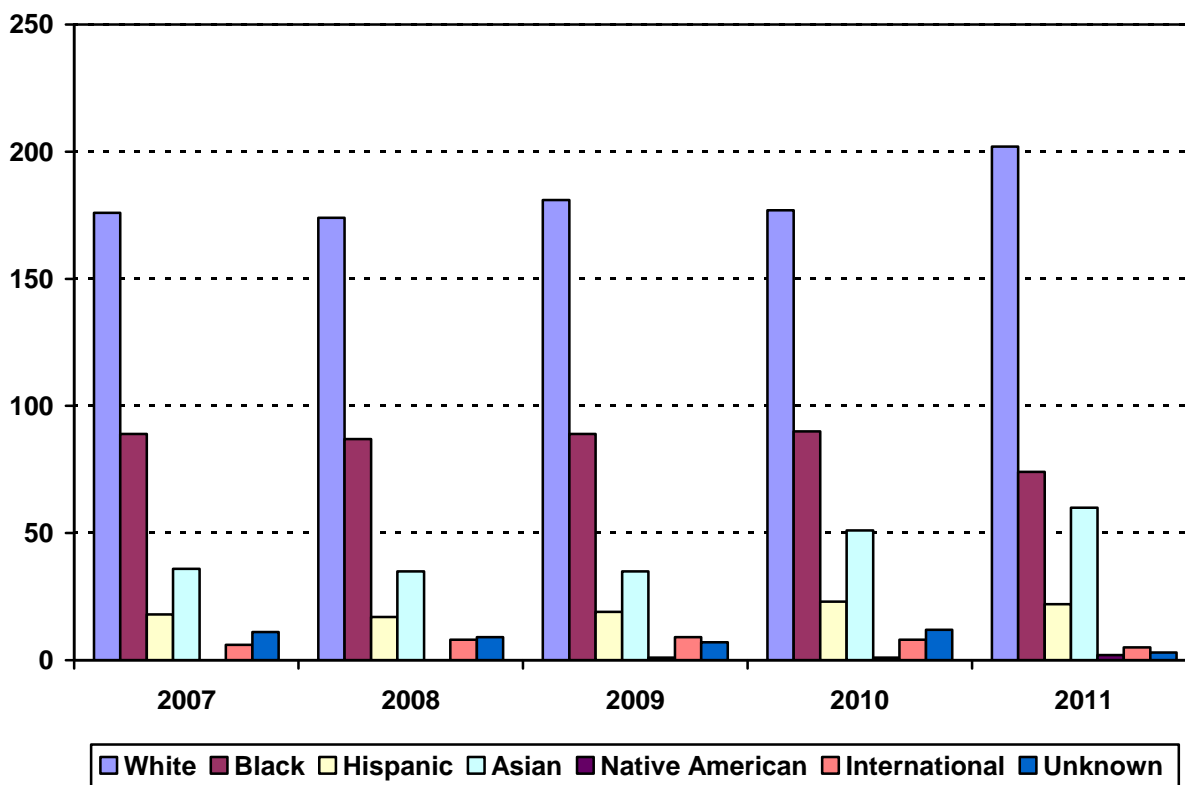


Age	Year									
	2007		2008		2009		2010		2011	
	N	%	N	%	N	%	N	%	N	%
Under 25	120	36%	131	40%	136	40%	120	33%	71	19%
25-29	101	30%	93	28%	94	28%	128	35%	139	38%
30-34	47	14%	41	12%	41	12%	43	12%	75	20%
35-39	20	6%	16	5%	22	6%	28	8%	37	10%
40-44	17	5%	18	5%	20	6%	23	6%	20	5%
45-49	16	5%	11	3%	12	4%	5	1%	12	3%
50 and over	15	4%	20	6%	16	5%	15	4%	14	4%
Median age	26		26		26		26		28	
Age range	19-64		20-59		19-60		19-62		21-64	
<b>Total</b>	<b>336</b>		<b>330</b>		<b>341</b>		<b>362</b>		<b>368</b>	

MEDIAN AGE BY PROGRAM  
COLLEGE OF HEALTH RELATED PROFESSIONS

Award	Program	Code	Median Age				
			2007	2008	2009	2010	2011
BS	Diagnostic Medical Imaging	DIMI	28.0	26.5	26.5	27.0	28.5
BS/DPT	Physical Therapy: BS/DPT	PTBS	24.0	26.0	23.0	23.0	26.5
BS	Physician's Assistant	PABS	25.0	23.0	26.0	25.5	27.0
	Non-matriculated	000	34.0			31.0	
	<b>Total Undergraduate</b>		<b>25.5</b>	<b>25.5</b>	<b>25.0</b>	<b>25.0</b>	<b>28.0</b>
CAS	Midwifery- Direct Entry	MWDC		44.0	45.0		
CAS	Midwifery	MWIC	43.0	46.0	47.0	48.0	
MS	Medical Informatics	MIMS	33.0	34.0	35.0	37.0	37.0
MS	Midwifery- Direct Entry	MWDM		29.0	37.5	49.0	
MS	Midwifery-RN MS	968			35.0		
MS	Midwifery	MWIF	41.0	33.0	35.0	30.5	32.0
MS	Occupational Therapy	OTMS		24.0	24.0	25.0	26.5
MS	Physical Therapy (BS and BS/MS)	PTMS	25.0	31.0			
DPT	Doctor of Physical Therapy	DPT	26.0	25.0	25.5	25.0	26.0
	Non-matriculated	999	36.0				
	<b>Total Graduate</b>		<b>28.0</b>	<b>26.0</b>	<b>26.0</b>	<b>27.0</b>	<b>29.0</b>
	<b>Total</b>		<b>26.5</b>	<b>26.0</b>	<b>26.0</b>	<b>26.0</b>	<b>28.0</b>
	Change from previous year		.5	.5	0	0	2

College of Health Related Professions  
Enrollment by Ethnic Group  
Fall 2007 to Fall 2011



Ethnic Group (IPEDS Categories)	Year									
	2007		2008		2009		2010		2011	
	N	%	N	%	N	%	N	%	N	%
White	176	52%	174	53%	181	53%	177	49%	202	55%
Black	89	26%	87	26%	89	26%	90	25%	74	20%
Hispanic	18	5%	17	5%	19	6%	23	6%	22	6%
Asian/Pacific Islander	36	11%	35	11%	35	10%	51	14%	60	16%
Native American	0	0%	0	0%	1	0%	1	0%	2	<1%
International	6	2%	8	2%	9	3%	8	2%	5	1%
Unknown	11	3%	9	3%	7	2%	12	3%	3	<1%
% Black and Hispanic		32%		32%		32%		31%		26%
<b>Total</b>	<b>336</b>		<b>330</b>		<b>341</b>		<b>362</b>		<b>368</b>	

- The Integrated Postsecondary Education Data Set (IPEDS) ethnic categories are those used by the U.S. Department of Education.

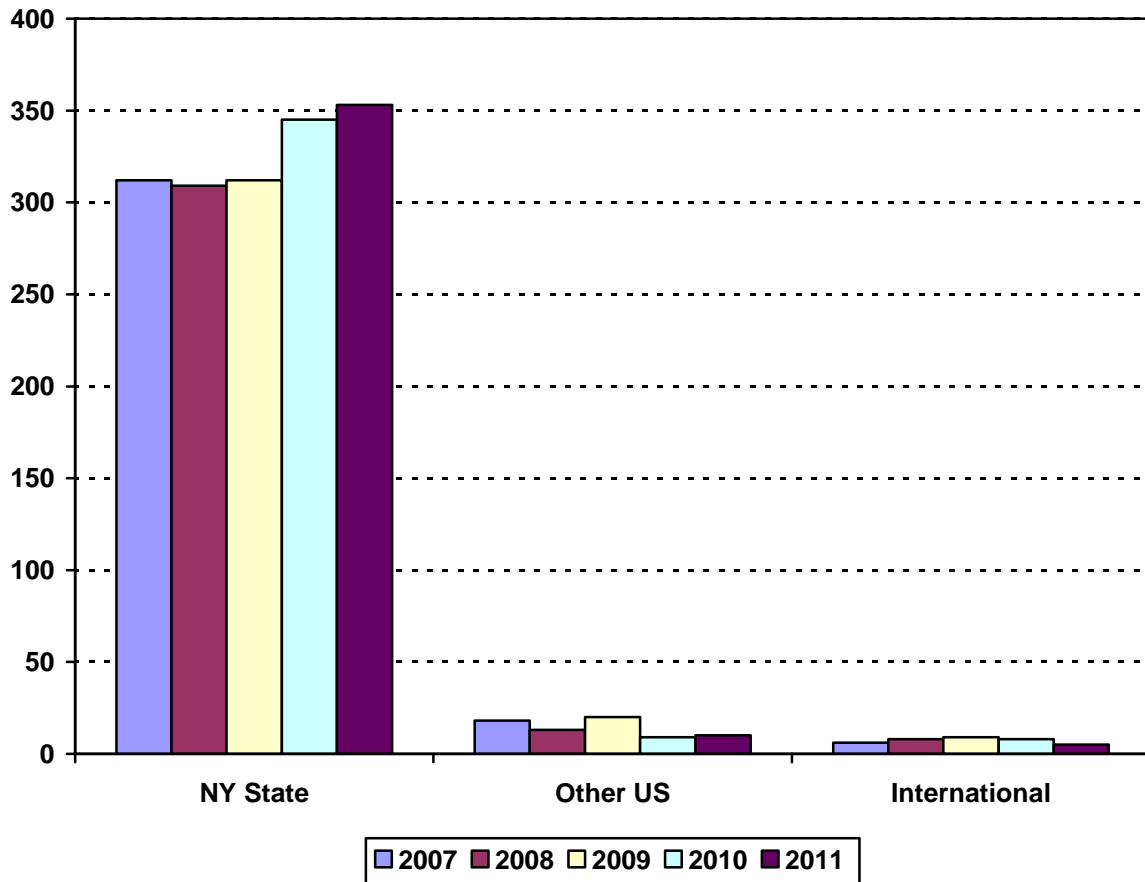


ENROLLMENT BY ETHNIC GROUP BY PROGRAM  
COLLEGE OF HEALTH RELATED PROFESSIONS

Program		2007							2008						
		White	Black	Hispanic	Asian	NA	Inter.	Unknown	White	Black	Hispanic	Asian	NA	Inter.	Unknown
Diagnostic Medical Imaging BS	DIMI	32	8	3	3	0	1	4	34	9	1	4	0	1	3
Physical Therapy BS	294														
Physical Therapy BS/MS	295														
Physical Therapy BS/DPT	PTBS	14	5	1	5	0	0	1	11	6	0	1	0	2	1
Physician's Assistant BS	PABS	26	22	4	12	0	1	1	23	30	6	9	0	1	2
Non-matriculated	000	1	0	0	0	0	0	0							
<b>Total Undergraduate</b>		<b>73</b>	<b>35</b>	<b>8</b>	<b>20</b>	<b>0</b>	<b>2</b>	<b>6</b>	<b>68</b>	<b>45</b>	<b>7</b>	<b>14</b>	<b>0</b>	<b>4</b>	<b>6</b>
Midwifery- Direct Entry CAS	MWDC								0	0	1	0	0	0	0
Midwifery- RN CAS	965														
Midwifery (CAS)	MWIC	0	2	1	0	0	0	0	0	1	0	0	0	0	0
Medical Informatics	MIMS	5	28	0	5	0	3	1	4	19	0	6	0	2	0
Midwifery- Direct Entry MS	MWDM								0	1	0	1	0	0	1
Midwifery-RN MS	968														
Midwifery (MS completion)	MWCM								3	0	0	0	0	0	0
Midwifery	MWIF	9	3	2	2	0	0	1	9	4	2	0	0	1	0
Occupational Therapy MS	OTMS	64	14	5	8	0	1	2	62	10	6	9	0	1	2
Physical Therapy (BS & BS/MS)	PTMS	10	2	2	1	0	0	0	1	1	0	1	0	0	0
Doctor of Physical Therapy	DPT	14	2	0	0	0	0	0	27	6	1	4	0	0	0
Non-matriculated	999	1	3	0	0	0	0	1							
<b>Total Graduate</b>		<b>103</b>	<b>54</b>	<b>10</b>	<b>16</b>	<b>0</b>	<b>4</b>	<b>5</b>	<b>106</b>	<b>42</b>	<b>10</b>	<b>21</b>	<b>0</b>	<b>4</b>	<b>3</b>
<b>Total</b>		<b>176</b>	<b>89</b>	<b>18</b>	<b>36</b>	<b>0</b>	<b>6</b>	<b>11</b>	<b>174</b>	<b>87</b>	<b>17</b>	<b>35</b>	<b>0</b>	<b>8</b>	<b>9</b>

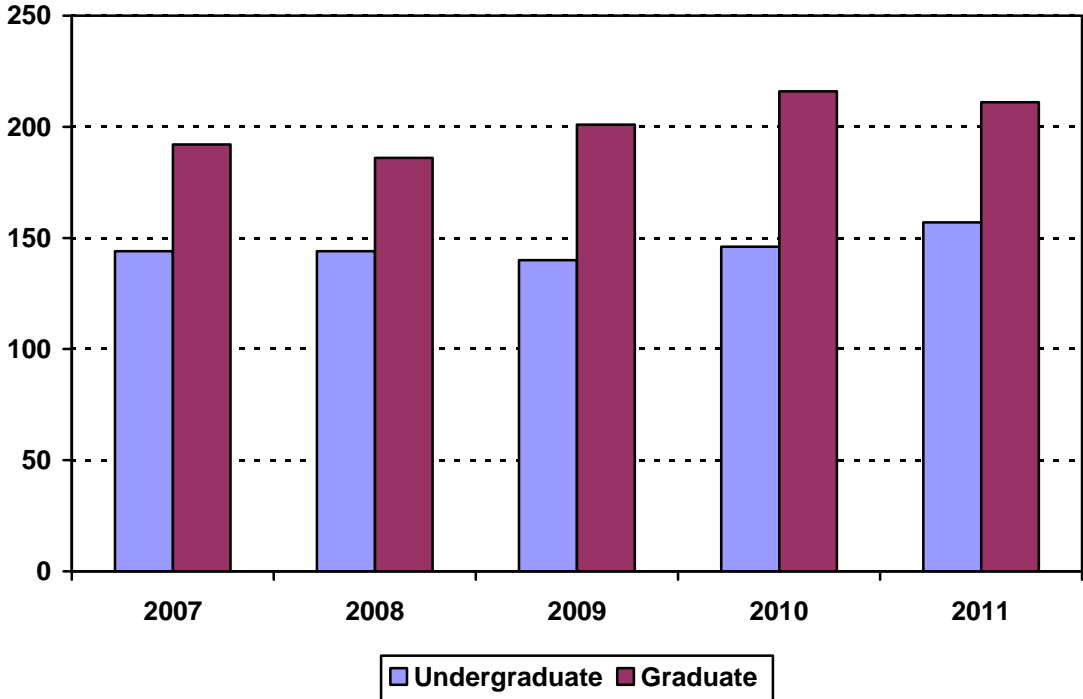
	2009							2010							2011						
	White	Black	Hispanic	Asian	NA	Inter.	Unknown	White	Black	Hispanic	Asian	NA	Inter.	Unknown	White	Black	Hispanic	Asian	NA	Inter.	Unknown
DIMI	26	12	2	6	0	1	1	19	11	5	9	0	2	1	35	7	3	8	1	2	0
294																					
PTBS	15	2	1	2	1	1	1	13	4	0	5	0	0	0	16	3	0	5	0	1	1
PABS	29	26	5	8	0	0	1	33	22	3	16	0	0	2	29	22	6	18	0	0	0
000								0	0	0	0	0	1	0							
<b>Total Undergrad</b>	<b>70</b>	<b>40</b>	<b>8</b>	<b>16</b>	<b>1</b>	<b>2</b>	<b>3</b>	<b>65</b>	<b>37</b>	<b>8</b>	<b>30</b>	<b>0</b>	<b>3</b>	<b>3</b>	<b>80</b>	<b>32</b>	<b>9</b>	<b>31</b>	<b>1</b>	<b>3</b>	<b>1</b>
MWDC	0	0	1	0	0	0	0														
965																					
MWIC	0	1	0	0	0	0	0	0	1	0	0	0	0	0							
MIMS	5	21	1	8	0	3	0	8	26	2	6	0	1	2	9	23	1	9	0	0	2
MWDM	0	1	0	0	0	0	1	0	0	0	0	0	0	1							
MWRM	1	0	0	0	0	0	0														
MWCM																					
MWIF	12	6	1	0	0	1	0	13	10	1	1	0	1	0	15	8	2	1	0	1	0
OTMS	69	10	7	7	0	1	2	66	8	11	12	0	1	3	71	6	9	14	0	0	0
PTMS																					
DPT	24	10	1	4	0	2	1	25	8	1	2	1	3	2	27	5	1	5	1	1	0
999																					
<b>Total Graduates</b>	<b>111</b>	<b>49</b>	<b>11</b>	<b>19</b>	<b>0</b>	<b>7</b>	<b>4</b>	<b>112</b>	<b>53</b>	<b>15</b>	<b>21</b>	<b>1</b>	<b>6</b>	<b>8</b>	<b>122</b>	<b>42</b>	<b>13</b>	<b>29</b>	<b>1</b>	<b>2</b>	<b>2</b>
<b>Total</b>	<b>181</b>	<b>89</b>	<b>19</b>	<b>35</b>	<b>1</b>	<b>9</b>	<b>7</b>	<b>177</b>	<b>90</b>	<b>23</b>	<b>51</b>	<b>1</b>	<b>9</b>	<b>11</b>	<b>202</b>	<b>74</b>	<b>22</b>	<b>60</b>	<b>2</b>	<b>5</b>	<b>3</b>

College of Health Related Professions  
Enrollment by Permanent Residence  
Fall 2007 to Fall 2011



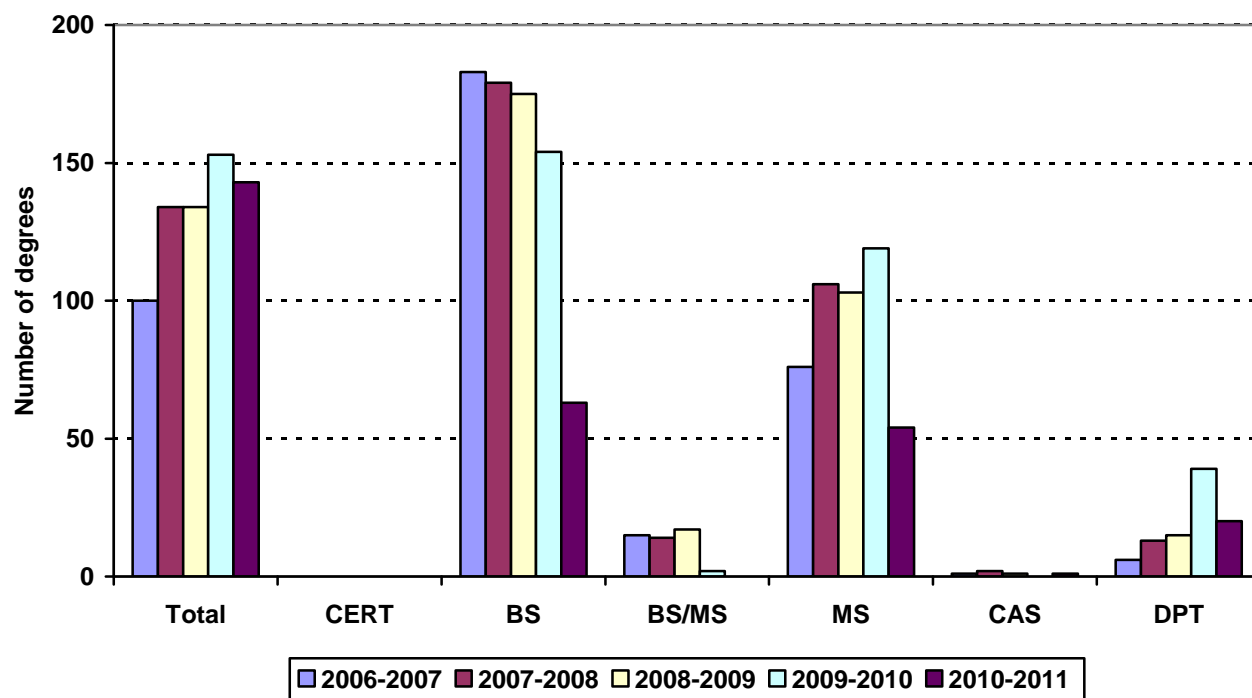
Residency	Year									
	2007		2008		2009		2010		2011	
	N	% of total	N	% of total	N	% of total	N	% of total	N	% of total
New York State	312	93%	309	94%	312	91%	345	95%	353	96%
New York City	272	81%	273	83%	258	76%	285	79%	293	80%
Bronx	12	4%	9	3%	11	3%	13	4%	9	2%
Kings (Brooklyn)	174	52%	171	52%	167	49%	178	49%	193	52%
Manhattan	25	7%	23	7%	18	5%	23	6%	26	7%
Queens	53	16%	60	18%	50	15%	55	15%	51	14%
Richmond (Staten I.)	8	2%	10	3%	12	4%	16	4%	14	4%
Other U.S.	18	5%	13	4%	20	6%	9	2%	10	3%
International	6	2%	8	2%	9	3%	8	2%	5	1%
<b>Total</b>	<b>336</b>		<b>330</b>		<b>341</b>		<b>362</b>		<b>368</b>	

College of Health Related Professions  
 Enrollment by Student Level  
 Fall 2007 to Fall 2011



Student Level	Year									
	2007		2008		2009		2010		2011	
	N	%	N	%	N	%	N	%	N	%
Undergraduate	144	43%	144	44%	140	41%	146	40%	157	43%
Graduate	192	57%	186	56%	201	59%	216	60%	211	57%
<b>Total</b>	<b>336</b>		<b>330</b>		<b>341</b>		<b>362</b>		<b>368</b>	

College of Health Related Professions  
Degrees Granted by Level  
2006-2007 to 2010-2011



Degrees	Code	Year				
		2006-07	2007-08	2008-09	2009-10	2010-11
Diagnostic Medical Imaging BS	DIMI	18	20	25	23	15
Physical Therapy BS/MS	PTMS	15	14	17	2	
Physician's Assistant BS	PABS	29	31	28	29	28
Midwifery CERT	MWIC		1			1
Nurse Midwifery CERT	MWNC		1	1		
Midwifery Direct Entry CERT	MWDC					
Midwifery- RN CAS	965					
Midwifery MS	MWIF		2	3	2	6
Midwifery Direct Entry MS	MWDM	4		2	10	
Midwifery- RN MS	MWRM	2	1	2		
Midwifery: MS Completion	MWCM	1		4		
Occupational Therapy MS	OTMS	22	32	25	28	33
Medical Informatics	MIMS		19	12	20	15
Doctor of Physical Therapy	DPT	6	13	15	39	20
<b>Total</b>		<b>100</b>	<b>134</b>	<b>134</b>	<b>153</b>	<b>118</b>
Change from previous year		4%	34%	0%	14%	-10%

DEGREES EARNED BY ETHNIC GROUP  
COLLEGE OF HEALTH RELATED PROFESSIONS

Ethnic Group	Year				
	2006-07	2007-08	2008-09	2009-10	2010-11
White	68	71	79	81	59
% change	31%	4%	11%	3%	-27%
Black	17	35	33	41	35
% change	-43%	106%	-6%	27%	-15%
Hispanic	6	9	4	5	9
% change	0%	50%	-56%	3%	80%
Asian	8	13	15	23	10
% change	60%	63%	15%	53%	-57%
Native American	0	0	0	0	0
% change	0%	0%	0%	0%	0%
International	0	0	0	2	0
% change				1%	-100%
Unknown	1	6	3	1	5
% change	-67%	500%	-50%	1%	500%
<b>Total</b>	<b>100</b>	<b>134</b>	<b>134</b>	<b>154</b>	<b>118</b>
Change from previous year	4%	34%	0%	14%	-23%