

SUNY Downstate Medical Center

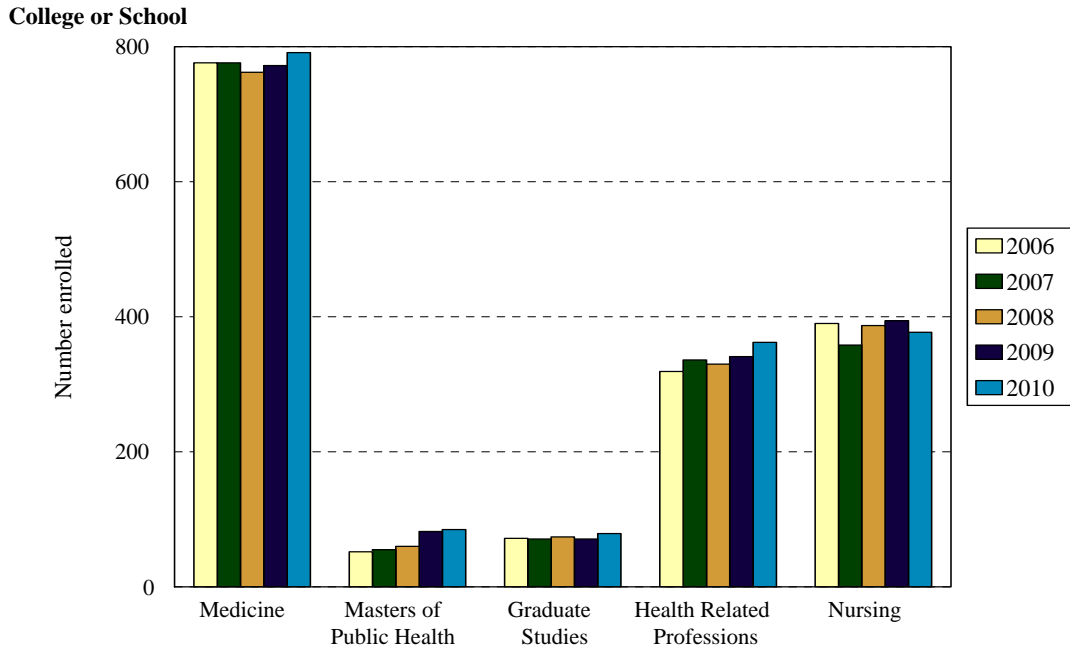
150



YEARS OF
MEDICAL
EDUCATION
1860-2010

STATISTICAL PORTRAIT
FALL 2010

Total Enrollment Fall 2006 to Fall 2010

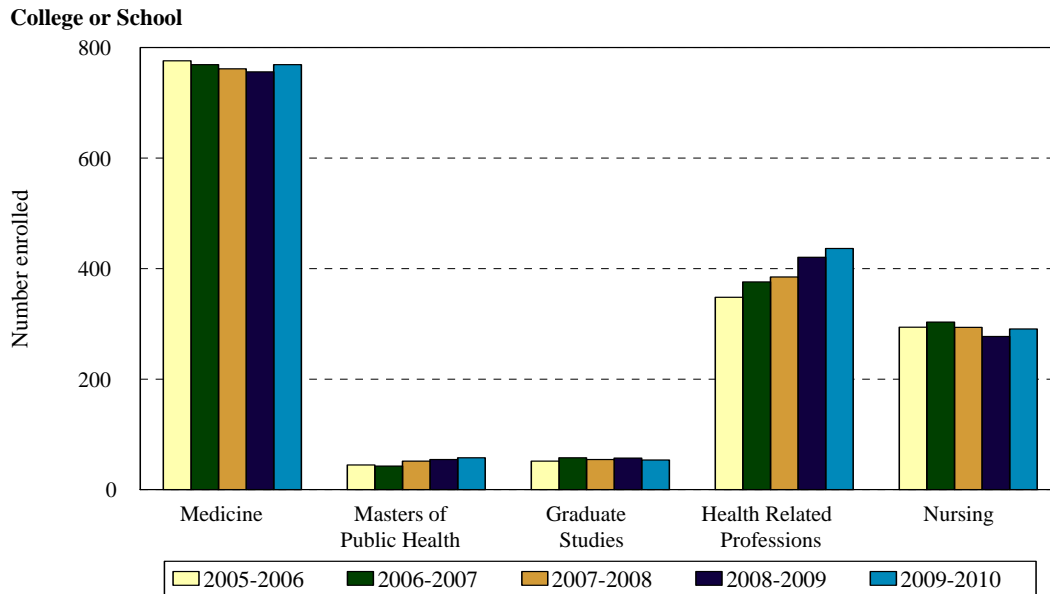


School	Year				
	2006	2007	2008	2009	2010
Medicine	776	776	762	772	791
Change from previous year	1%	0%	-2%	1%	2%
Public Health	52	55	60	82	85
Change from previous year	2%	6%	8%	37%	4%
Graduate Studies	72	71	74	71	79
Change from previous year	-3%	-1%	4%	-4%	10%
Health Related Professions	319	336	330	341	362
Change from previous year	8%	5%	-2%	3%	6%
Nursing	390	358	387	394	377
Change from previous year	4%	-8%	7%	2%	-5%
Total	1,609	1598	1613	1660	1694
Change from previous year	3%	-1%	1%	3%	2%

School	Year									
	2006		2007		2008		2009		2010	
	N	% of total	N	% of total	N	N	N	% of total	N	% of total
Medicine	776	48%	776	49%	762	47%	772	47%	791	47%
Public Health	52	3%	55	3%	60	4%	82	5%	85	5%
Graduate Studies	72	4%	71	4%	74	5%	71	4%	79	5%
CHRP	319	20%	336	21%	330	20%	341	21%	362	21%
Nursing	390	24%	358	22%	387	24%	394	24%	377	22%
Total	1,609	100%	1598	100%	1613	100%	1660	100%	1694	100%

College of Medicine totals reflect a planned reduction in entering class size beginning in 1997 and a planned increase in 2000. In 2002, the MPH program was added under the College of Medicine, but is described separately.

Total Full Time Equivalents (FTE) Academic Years 2005-2006 to 2009-2010

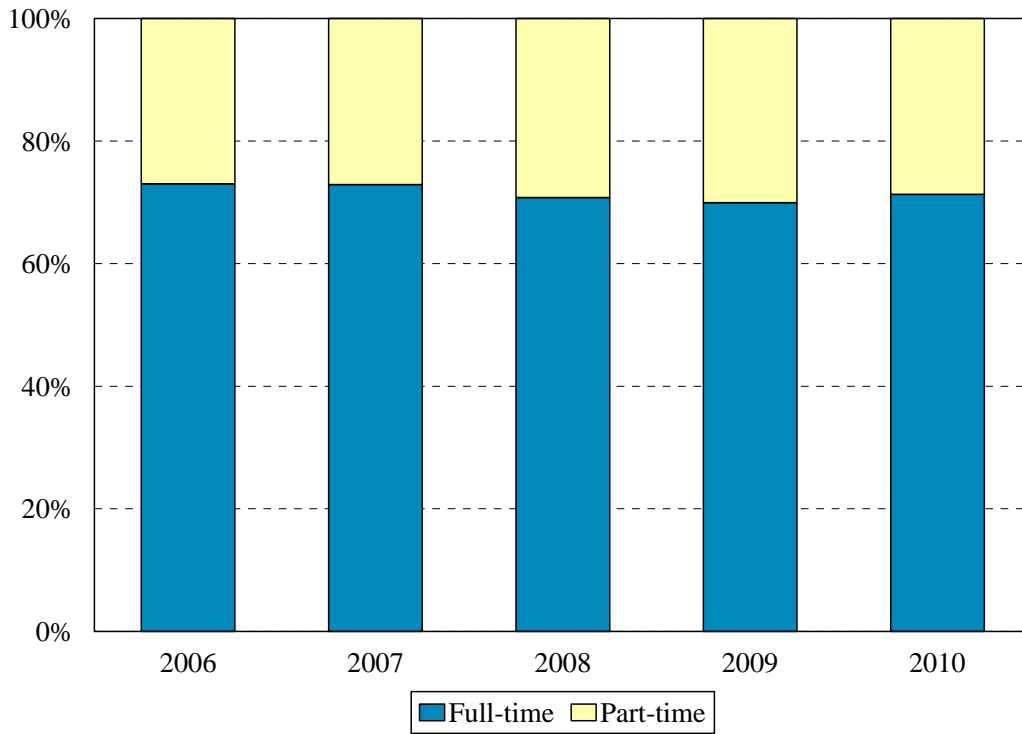


School	Year				
	2005-2006	2006-2007	2007-2008	2008-2009	2009-2010
Medicine	776.00	769	761.5	756	769
Change from previous year	1%	-1%	-1%	-1%	2%
Public Health	44.75	42.5	51.54	54.63	57.66
Change from previous year	5%	-5%	21%	6%	6%
Graduate Studies	51.63	57.71	54.42	57.21	53.79
Change from previous year	-15%	12%	-6%	5%	-6%
Health Related Professions	348.00	376	384.74	420.42	436.51
Change from previous year	17%	8%	2%	9%	4%
Nursing	294.17	303.18	293.63	277.33	290.67
Change from previous year	3%	3%	-3%	-6%	5%
Total	1504.54	1548.39	1545.83	1565.58	1607.63
Change from previous year	4%	1%	3%	1%	3%

School	Year									
	2005-2006		2006-2007		2007-2008		2008-2009		2009-2010	
	FTE	% of total	FTE	% of total	FTE	% of total	FTE	% of total	FTE	% of total
Medicine	776.00	51.58%	769.00	49.66%	761.5	49.26%	756	48%	769.00	48%
Public Health	44.75	2.97%	42.50	2.74%	51.54	3.33%	54.63	3%	57.66	4%
Graduate Studies	51.63	3.43%	57.71	3.73%	54.42	3.52%	57.21	4%	53.79	3%
CHRP	348.00	23.13%	376.00	19.58%	384.74	24.89%	420.42	27%	436.51	27%
Nursing	294.17	19.55%	303.18	24.28%	293.63	18.99%	277.33	18%	290.67	18%
Total	1504.54		1548.39		1545.83		1565.58		1607.63	

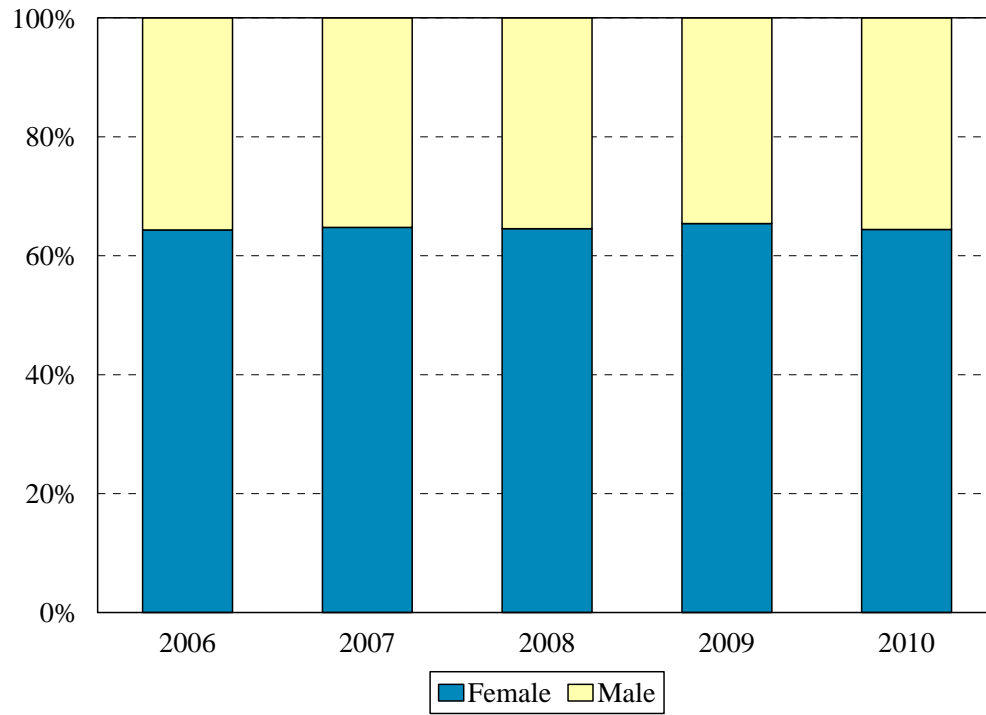
Full Time Equivalents (FTE) are computed as the sum over an academic year (summer, fall, and spring) of the following: 1) All undergraduate credits divided by 30, 2) all graduate credits with the exception of advanced Ph.D. and post-master's certificate students divided by 24, 3) medical student headcount for fall and spring divided by 2, and 4) full-time advanced Ph.D. and post master's certificate headcount plus .75 of the part-time advanced Ph.D. and post master's certificate headcount.

Total Enrollment by Full- and Part-time Status Fall 2006 to Fall 2010



Enrollment Levels	Year				
	2006	2007	2008	2009	2010
Full-time	1175	1165	1142	1161	1208
Part-time	434	433	471	499	486
% Full-time	73%	73%	71%	70%	71%
Total	1,609	1598	1613	1660	1694

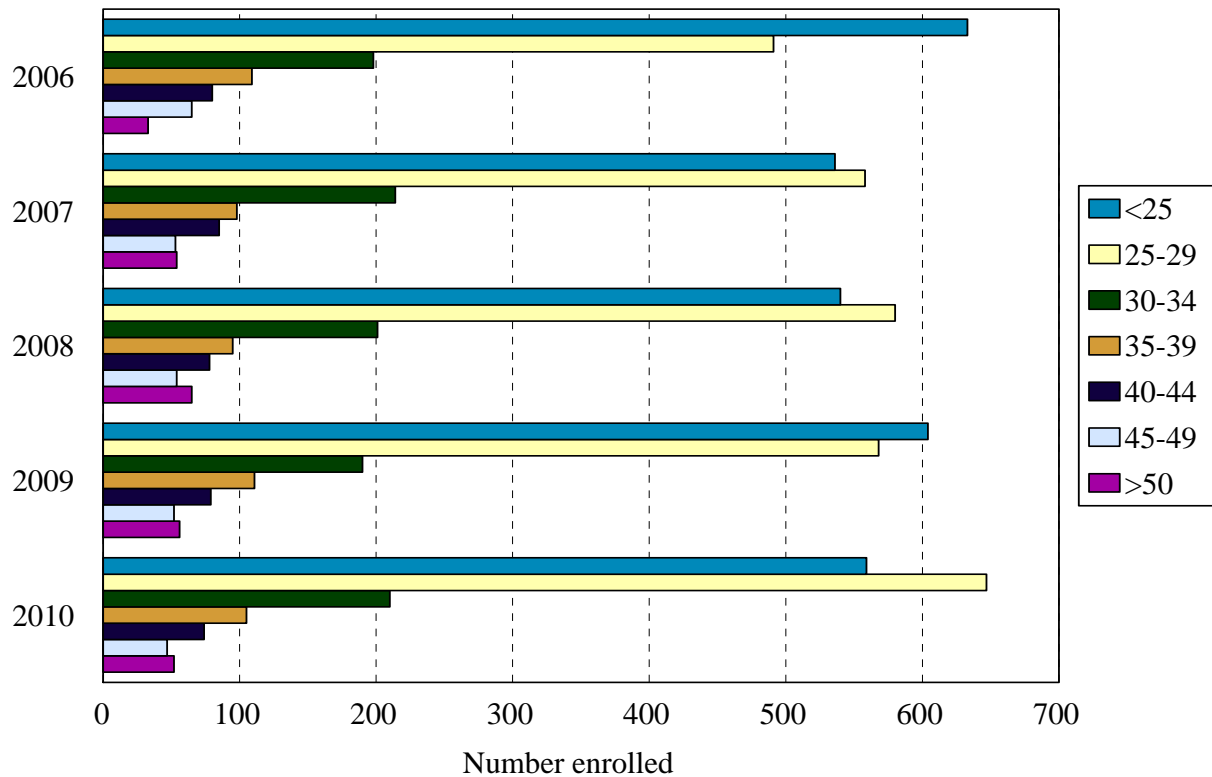
Total Enrollment by Gender Fall 2006 to Fall 2010



Gender	Year				
	2006	2007	2008	2009	2010
Female	1035	1035	1041	1086	1091
Male	574	563	572	574	603
% Female	64%	65%	65%	65%	64%
Total	1,609	1,598	1,613	1660	1694

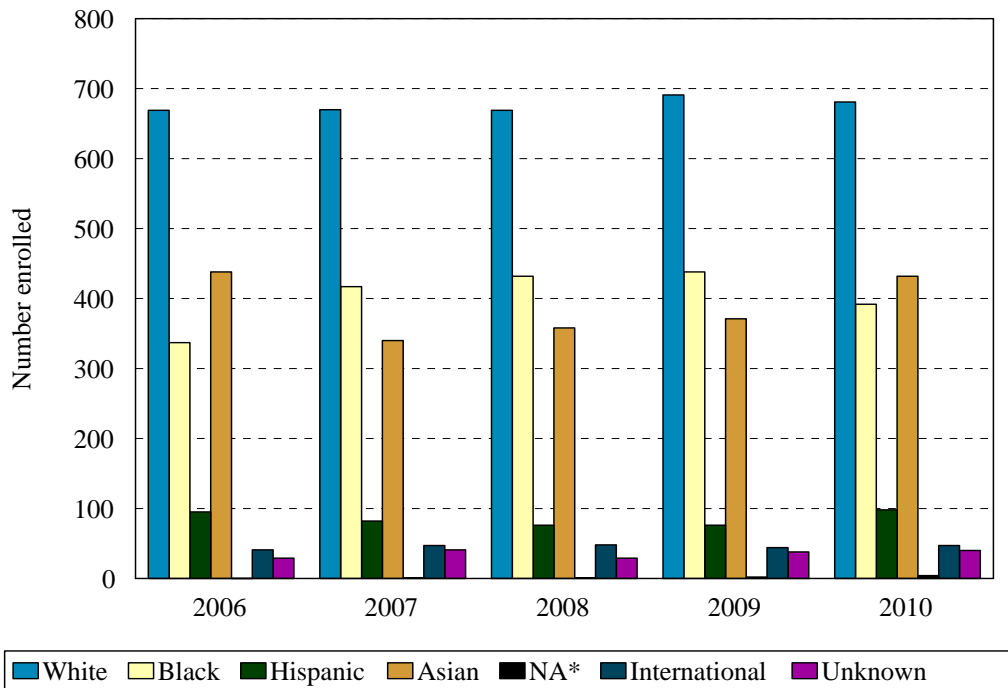
Total Enrollment by Age Level

Fall 2006 to Fall 2010



Age	Year									
	2006		2007		2008		2009		2010	
	N	%	N	%	N	%	N	%	N	%
Under 25	633	39%	536	34%	540	33%	604	36%	559	33%
25-29	491	31%	558	35%	580	36%	568	34%	647	38%
30-34	198	12%	214	13%	201	12%	190	11%	210	12%
35-39	109	7%	98	6%	95	6%	111	7%	105	6%
40-44	80	5%	85	5%	78	5%	79	5%	74	4%
45-49	65	4%	53	3%	54	3%	52	3%	47	3%
50 and over	33	2%	54	3%	65	4%	56	3%	52	3%
Median Age	26		26		26		26		26	
Age Range	19-64		19-64		20-61		19-62		19-62	
Total	1,609		1,598		1,613		1,660		1,694	

Total Enrollment by Ethnic Group Fall 2006 to Fall 2010

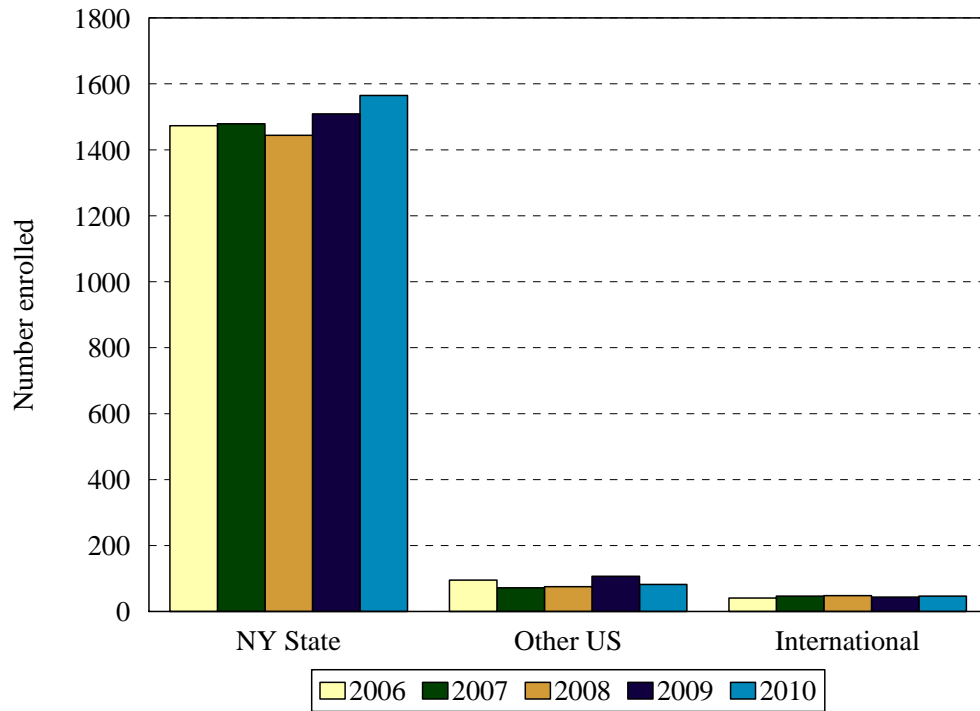


*Native American: 0 in 2006, 1 in 2007, 1 in 2008, 2 in 2009 and 4 in 2010.

Ethnic Group (IPEDS Categories)	Year									
	2006		2007		2008		2009		2010	
	N	%	N	%	N	%	N	%	N	%
White	669	42%	670	42%	669	41%	691	42%	681	40%
Asian/Pacific Islander	337	21%	340	21%	358	22%	371	22%	392	23%
Hispanic	95	6%	82	5%	76	5%	76	5%	98	6%
Black	438	27%	417	26%	432	27%	438	26%	432	26%
Native American	0	0%	1	<1%	1	<1%	2	<1%	4	<1%
International	41	5%	47	3%	48	3%	44	3%	47	3%
Unknown	29	2%	41	3%	29	2%	38	2%	40	2%
% Black and Hispanic		33%		31%		32%		31%		31%
Total	1,609	100%	1598	100%	1,613	100%	1660	100%	1694	100%

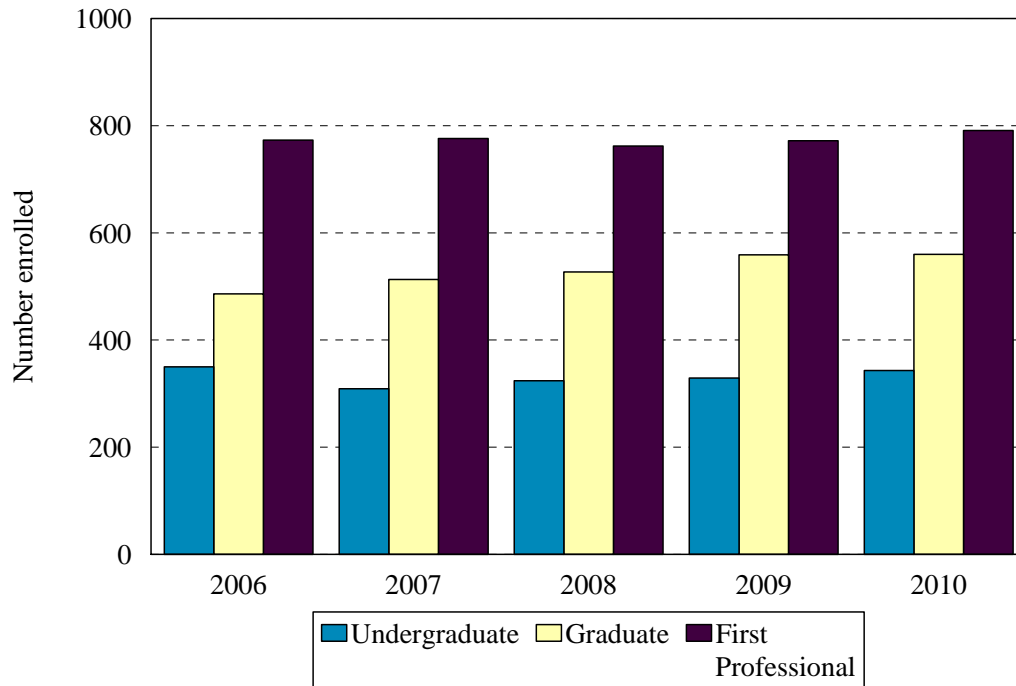
- The Integrated Postsecondary Education Data Set (IPEDS) ethnic categories are those used by the U.S. Department of Education.

Total Enrollment by Permanent Residence Fall 2006 to Fall 2010



Residency	Year									
	2006		2007		2008		2009		2010	
	N	%	N	%	N	%	N	%	N	%
New York State	1,473	92%	1,479	93%	1,444	90%	1,509	91%	1,565	92%
New York City	1,129	70%	1,118	70%	1,105	69%	1,157	70%	1,204	71%
Bronx	36	2%	43	3%	47	3%	56	3%	48	3%
Kings (Brooklyn)	662	41%	666	42%	686	43%	683	41%	689	41%
Manhattan	114	7%	110	7%	48	6%	98	6%	114	7%
Queens	273	17%	256	16%	279	17%	270	16%	287	17%
Richmond (Staten I.)	44	3%	43	3%	45	3%	50	3%	66	4%
Other U.S.	95	6%	72	5%	75	5%	107	6%	82	5%
International	41	3%	47	3%	48	3%	44	3%	47	3%
Total	1,609		1,598		1,613		1,660		1,694	

Total Enrollment by Student Level Fall 2006 to Fall 2010

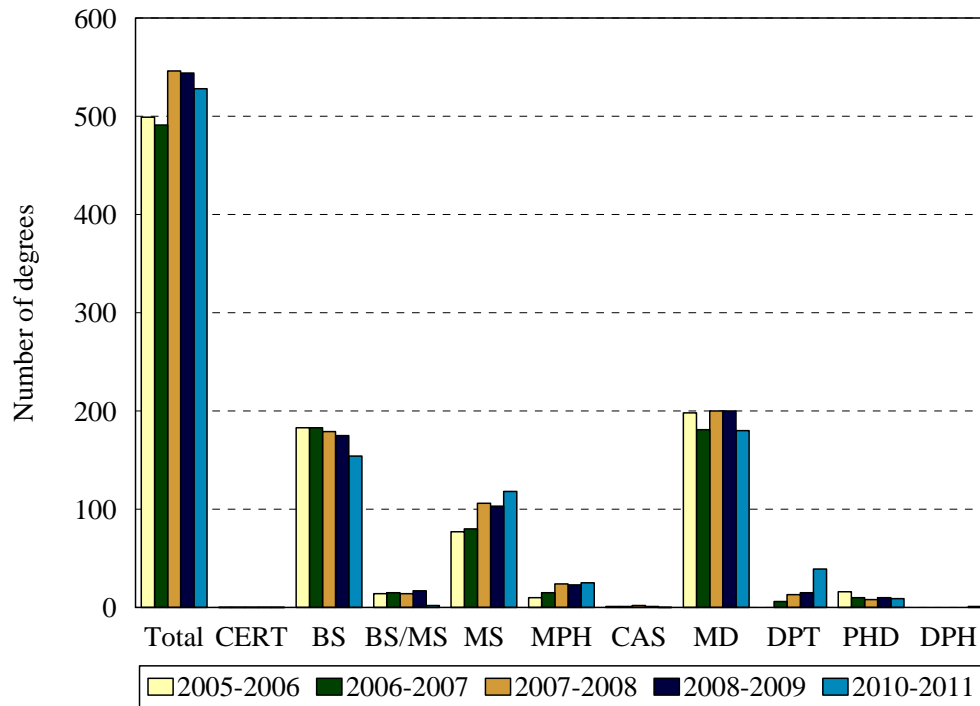


Note: Beginning Ph.D. and Advanced Certificate students have completed 0-23 graduate credits; advanced graduates have completed 24 or more. First professional students are medical students

Student Level	Year									
	2006		2007		2008		2009		2010	
	N	%	N	%	N	%	N	%	N	%
Undergraduate	350	22%	309	19%	324	20%	329	20%	343	20%
Graduate	486	30%	513	32%	527	33%	559	33%	560	33%
First Professional	773	48%	776	49%	762	47%	772	47%	791	47%
Total	1609	100%	1598	100%	1,613	100%	1,660	100%	1,694	100%

Level	Year									
	2006		2007		2008		2009		2010	
	Full-time	Part-Time	Full-time	Part-Time	Full-time	Part-Time	Full-time	Part-Time	Full-time	Part-Time
Undergraduate	212	138	196	113	184	131	187	142	193	150
	18%	9%	12%	7%	57%	43%	57%	43%	56%	44%
Graduate	963	296	969	320	967	321	974	357	1015	336
	76%	24%	61%	20%	75%	25%	73%	27%	75%	25%

Total Degrees Granted by Level 2005-2006 to 2009-2010



Degrees granted during July1 (year 1)-June 30 (year 2) periods

Degree Level	Year				
	2005-2006	2006-2007	2007-2008	2008-2009	2009-2010
Certificate	0	0	0	0	0
Bachelor of Science	183	183	179	175	154
BS/MS*	14	15	14	17	2
Master of Science	77	76	106	103	119
Master of Public Health	10	15	24	23	25
Certificate of Advanced Study	1	1	2	1	0
Doctor of Medicine	198	181	200	200	180
Doctor of Physical Therapy		6	13	15	39
Doctor of Philosophy	16	11	8	10	9
Doctor of Public Health					1
Total	499	488	546	544	529

* Combined BSMS in Physical Therapy.