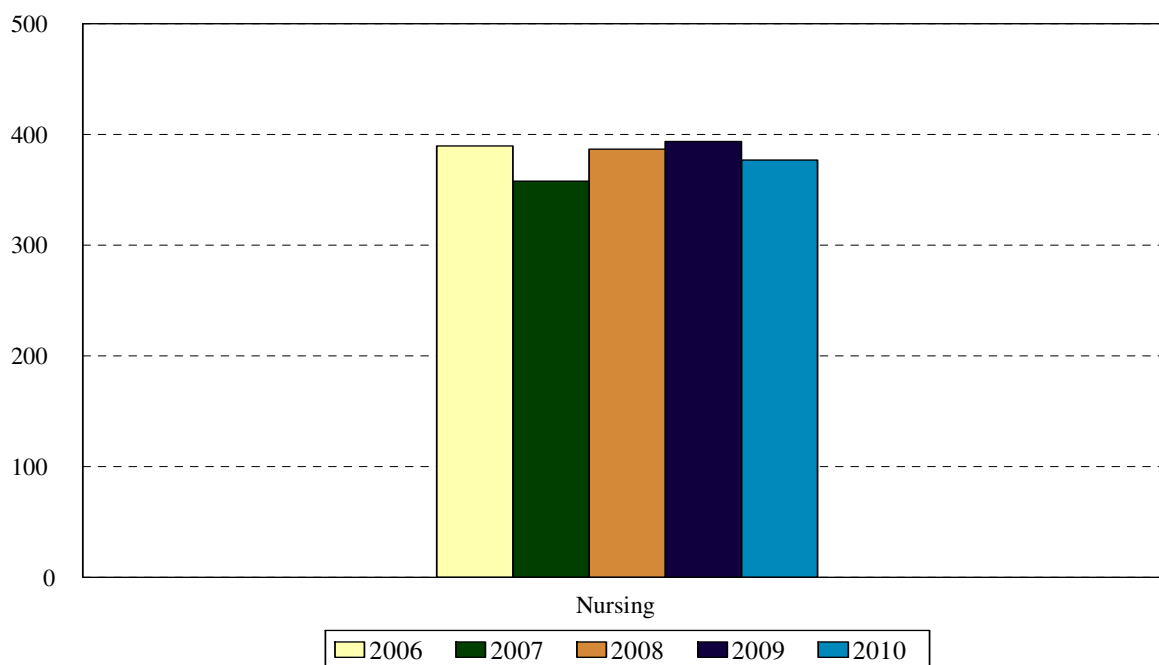


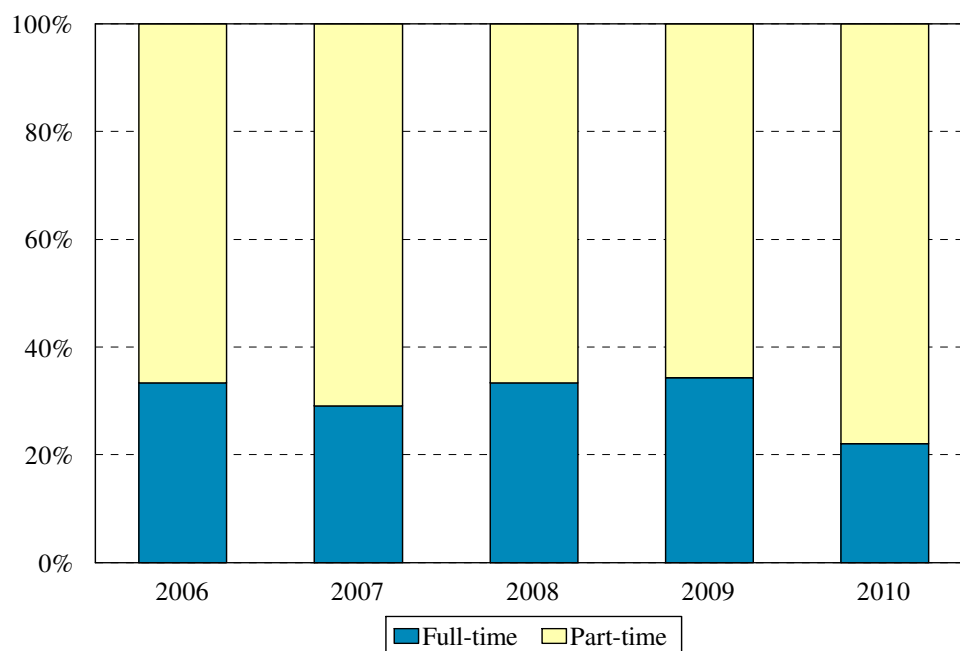
## College of Nursing Enrollment Fall 2006 to Fall 2010



Award	Program	Code	Year				
			2006	2007	2008	2009	2010
BS	Accelerated Nursing	NACC	50	61	46	58	49
BS	RN Completion	RNBS	132	104	134	131	148
	Non-matriculated	000	6	0			
	<b>Total Undergraduates</b>		<b>188</b>	<b>165</b>	<b>180</b>	<b>189</b>	<b>197</b>
CAS	Family Nurse Practitioner	FNPC	3	1	3	2	3
CAS	Women's Nurse Practitioner	930					
MS	Clinical Nurse Specialist	CNSM		31	15	17	13
MS	Clinical Nurse Spec. Adult	CNSA	30		15	4	4
MS	Clinical Nurse Spec. HRMI	CNSH	6		2		
MS	Family Nurse Practitioner	FNPM	89	97	120	133	110
MS	Nurse Anesthesia: KCH	940	37				
MS	Nurse Anesthesia: Harlem	941	14				
MS	Nurse Anesthesia	NRAN		32	15	13	18
MS	Nurse Midwifery Completion	950					
MS	Nurse Midwifery	966	11				
MS	Nurse Midwifery	NRMS		17	15	17	16
MS	Women's Nurse Practitioner	WNPM	12	13	19	17	16
	Non-matriculated	999	0	2	3	2	
	<b>Total Graduate</b>		<b>202</b>	<b>193</b>	<b>207</b>	<b>205</b>	<b>180</b>
	<b>Total</b>		<b>390</b>	<b>358</b>	<b>387</b>	<b>394</b>	<b>377</b>
	Change from previous year		4%	-8%	8%	2%	-4%

College of Nursing totals reflect the deactivation of the Generic Nursing program, beginning in 1997.

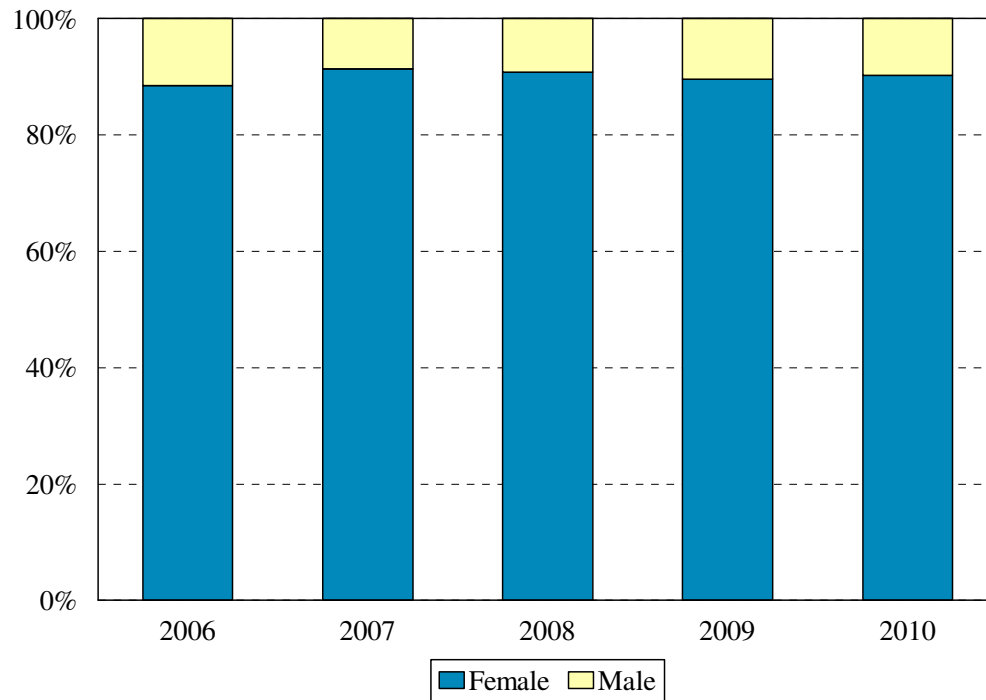
College of Nursing  
Enrollment by Full- and Part-time Status  
Fall 2006 to Fall 2009



Program	Code	Year								
		2006			2007			2008		
		FT	PT	%FT	FT	PT	%FT	FT	PT	%FT
Accelerated Nursing	NACC	39	11	78%	55	6	90%	40	6	87%
RN Completion BS	RNBS	31	101	23%	24	80	23%	18	116	13%
Non-matriculated	000	0	6	0%	0	0	0%			
<b>Total Undergraduates</b>		<b>70</b>	<b>118</b>	<b>37%</b>	<b>79</b>	<b>86</b>	<b>48%</b>	<b>58</b>	<b>122</b>	<b>32%</b>
Family Nurse Practitioner CAS	FNPC	2	1	67%	0	1	0%	0	3	0%
Women's Nurse Practitioner CAS	930									
Clinical Nurse Specialist MS	CNSM				4	27	13%	2	13	13%
Clinical Nurse Spec. Adult MS	901	5	25	17%				0	15	0%
Clinical Nurse Spec. HRMI MS	902	3	3	50%				2	0	100%
Family Nurse Practitioner MS	FNPM	24	65	27%	16	81	16%	28	92	23%
Nurse Anesthesia MS: Kings	940	13	24	35%						
Nurse Anesthesia MS: Harlem	941	2	12	14%						
Nurse Anesthesia MS	NRAN				14	18	44%	5	10	33%
Nurse Midwifery Completion MS	950									
Nurse Midwifery: RN MS	966	7	4	64%						
Nurse Midwifery MS	NRMS				9	8	53%	9	6	60%
Women's Nurse Practitioner MS	WNPM	4	8	33%	1	12	8%	3	16	16%
Non-matriculated graduate	999				0	2	0%	0	3	0%
<b>Total Graduate</b>		<b>60</b>	<b>142</b>	<b>30%</b>	<b>44</b>	<b>149</b>	<b>91%</b>	<b>49</b>	<b>158</b>	<b>24%</b>
<b>Total</b>		<b>130</b>	<b>260</b>	<b>33%</b>	<b>123</b>	<b>235</b>	<b>34%</b>	<b>107</b>	<b>280</b>	<b>28%</b>
Change from previous year				-3%			1%			-6%

Program	Code	Year					
		2009			2010		
		FT	PT	%FT	FT	PT	%FT
Accelerated Nursing	NACC	55	3	95%	48	1	98%
RN Completion BS	RNBS	6	125	5%	8	140	5%
Non-matriculated	000						
<b>Total Undergraduates</b>		<b>61</b>	<b>128</b>	<b>32%</b>	<b>56</b>	<b>141</b>	<b>28%</b>
Family Nurse Practitioner CAS	FNPC	0	2	0%	0	3	0%
Women's Nurse Practitioner CAS	930						
Clinical Nurse Specialist MS	CNSM	0	17	0%	0	13	0%
Clinical Nurse Spec. Adult MS	CNSA	0	4	0%	0	4	0%
Clinical Nurse Spec. HRMI MS	902						
Family Nurse Practitioner MS	FNPM	19	114	14%	5	105	5%
Nurse Anesthesia MS: Kings	940						
Nurse Anesthesia MS: Harlem	941						
Nurse Anesthesia MS	NРАН	7	6	54%	15	3	83%
Nurse Midwifery Completion MS	950						
Nurse Midwifery: RN MS	966						
Nurse Midwifery MS	NRMS	3	14	18%	6	10	38%
Women's Nurse Practitioner MS	WNPM	6	11	35%	1	15	6%
Non-matriculated	999	0	2	0%			
<b>Total Graduate</b>		<b>35</b>	<b>170</b>	<b>17%</b>	<b>27</b>	<b>153</b>	<b>15%</b>
<b>Total</b>		<b>96</b>	<b>298</b>	<b>24%</b>	<b>83</b>	<b>294</b>	<b>22%</b>
Change from previous year				-4%			-2%

College of Nursing  
Enrollment by Gender  
Fall 2006 to Fall 2010

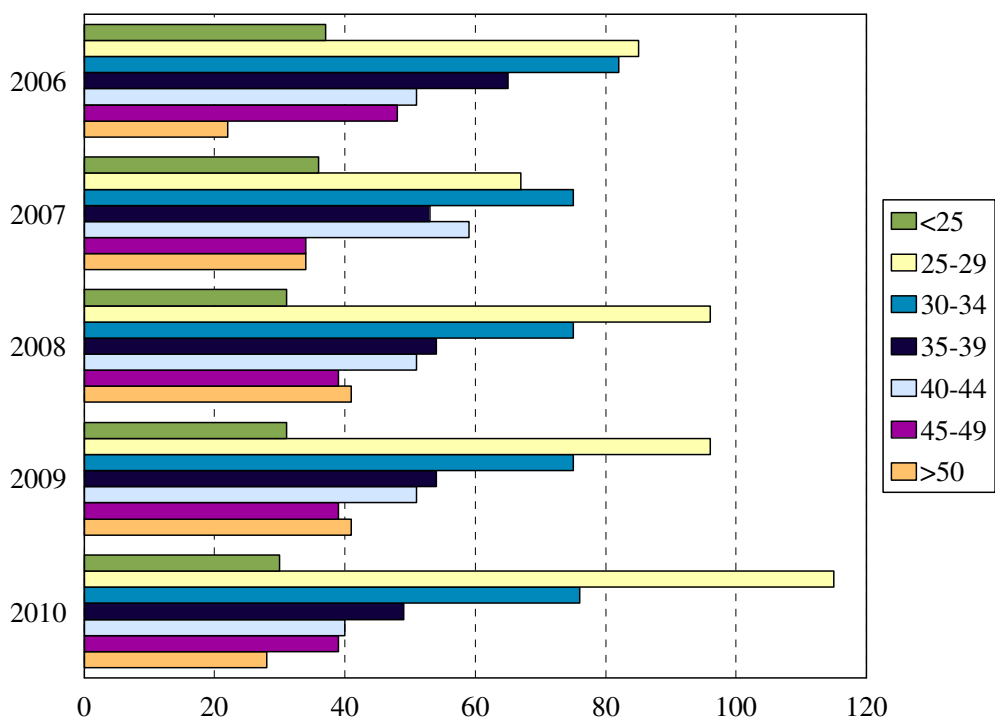


Gender	Year				
	2006	2007	2008	2009	2010
Female	345	327	351	353	340
Male	45	31	36	41	37
% Female	88%	91%	91%	90%	90%
<b>Total</b>	<b>390</b>	<b>358</b>	<b>387</b>	<b>394</b>	<b>377</b>

COLLEGE OF NURSING  
ENROLLMENT BY GENDER

Program	Code	2006		2007		2008		2009		2010	
		F	M	F	M	F	M	F	M	F	M
Accelerated Nursing BS	NACC	42	8	54	7	37	9	48	10	41	8
RN Completion BS	RNBS	122	10	98	6	125	9	117	14	133	15
Non-matriculated	000	5	1	0	0	0	0	0	0		
<b>Total Undergraduates</b>		<b>169</b>	<b>19</b>	<b>152</b>	<b>13</b>	<b>162</b>	<b>18</b>	<b>165</b>	<b>24</b>	<b>174</b>	<b>23</b>
Family Nurse Practitioner CAS	FNPC	3	0	1	0	3	0	2	0	3	0
Women's Nurse Practitioner CAS	930										
Clinical Nurse Specialist MS	CNSM			29	2	14	1	17	0	13	0
Clinical Nurse Spec. Adult MS	CNSA	27	3			13	2	4	0	4	0
Clinical Nurse Spec. HRMI MS	CNSH	6	0			2	0				
Family Nurse Practitioner MS	FNPM	82	7	91	6	110	10	122	11	104	6
Nurse Anesthesia MS: Kings	940	26	11								
Nurse Anesthesia MS: Harlem	941	9	5								
Nurse Anesthesia MS	NRAN			22	10	10	5	7	6	10	8
Nurse Midwifery Completion MS	950										
Nurse Midwifery: RN MS	966	11	0								
Nurse Midwifery MS	NRMS			17	0	15	0	17	0	16	0
Women's Nurse Practitioner MS	WNPM	12	0	13	0	19	0	17	0	16	0
Non-matriculated	999			2	0	3	0	2	0		
<b>Total Graduate</b>		<b>176</b>	<b>26</b>	<b>175</b>	<b>18</b>	<b>189</b>	<b>18</b>	<b>188</b>	<b>17</b>	<b>166</b>	<b>14</b>
<b>Total</b>		<b>345</b>	<b>45</b>	<b>327</b>	<b>31</b>	<b>351</b>	<b>36</b>	<b>353</b>	<b>41</b>	<b>340</b>	<b>37</b>
Change from previous year		6%	-10%	-5%	-31%	7%	16%	1%	14%	-4%	-10%

College of Nursing  
Enrollment by Age Level  
Fall 2006 to Fall 2010

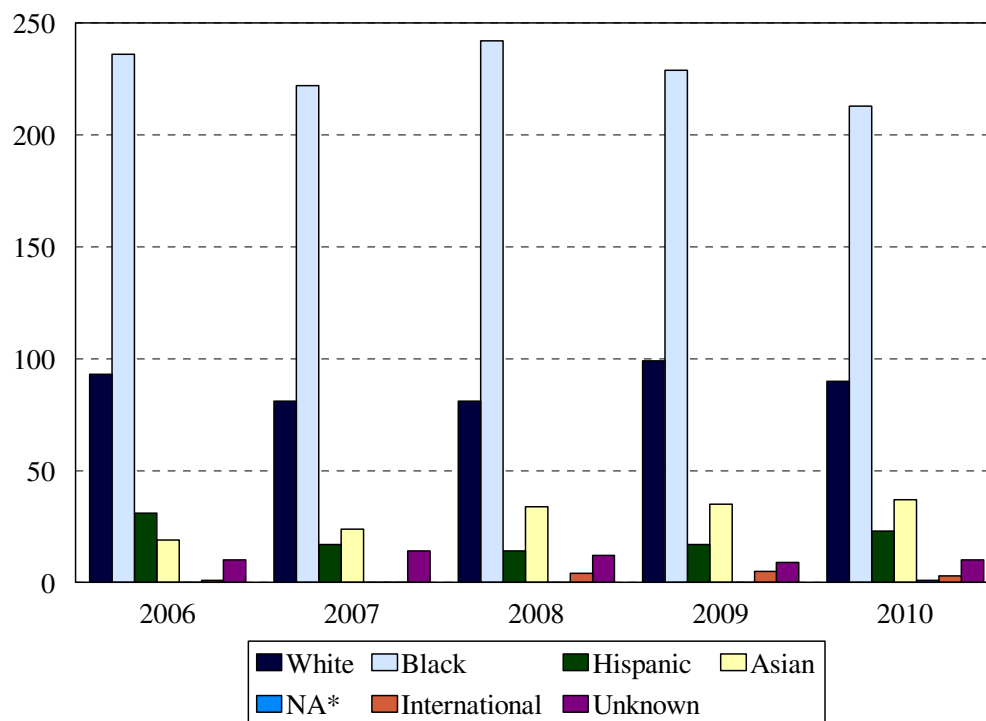


Age	Year									
	2006		2007		2008		2009		2010	
	N	%	N	%	N	%	N	%	N	%
Under 25	23	6%	37	9%	36	10%	31	8%	30	8%
25-29	86	23%	85	22%	67	19%	96	25%	115	31%
30-34	81	22%	82	21%	75	21%	75	19%	76	20%
35-39	59	16%	65	17%	53	15%	54	14%	49	13%
40-44	62	17%	51	13%	59	16%	51	13%	40	11%
45-49	50	13%	48	12%	34	10%	39	10%	39	10%
50 and over	14	4%	22	6%	34	10%	41	11%	28	7%
Age range	19-55		19-58		21-59		21-60		21-59	
Median age	34		34		35		34		32	
<b>Total</b>	<b>375</b>		<b>390</b>		<b>358</b>		<b>387</b>		<b>377</b>	

COLLEGE OF NURSING  
MEDIAN AGE BY PROGRAM

Award	Program	Code	Median Age				
			2006	2007	2008	2009	2010
BS	Accelerated Nursing BS	NACC	28.0	29.0	28.0	26.0	26.0
BS	RN Completion BS	RNBS	34.0	35.0	35.5	35.0	35.0
	Non-matriculated	000	34.0				
	<b>Total Undergraduate</b>		<b>33.0</b>	<b>33.0</b>	<b>33.0</b>	<b>31.0</b>	<b>33.0</b>
CAS	Family Nurse Practitioner	FNPC	40.0	36.0	37.0	40.0	45.0
CAS	Women's Nurse Practitioner	930					
MS	Clinical Nurse Specialist	CNSM		39.0	37.0	43.0	42.0
MS	Clinical Nurse Spec. Adult	CNSA	39.5		34.0	29.0	47.5
MS	Clinical Nurse Spec. HRMI	902	28.5		41.0		
MS	Family Nurse Practitioner	FNPM	38.0	40.0	37.0	34.0	31.5
MS	Nurse Anesthesia : KCH	940	35.0				
MS	Nurse Anesthesia: Harlem	941	31.5				
MS	Nurse Anesthesia	NRAN		37.0	33.0	34.0	31.0
MS	Nurse Midwifery Completion	950					
MS	Nurse Midwifery: RN	966	29.0				
MS	Nurse Midwifery	NRMS		31.0	31.0	31.0	29.5
MS	Women's Nurse Practitioner	WNPM	32.0	33.0	29.0	26.0	28.0
	Non-matriculated	999		39.0	48.0	24.0	
	<b>Total Graduate</b>		<b>35.0</b>	<b>36.0</b>	<b>36.0</b>	<b>32.0</b>	<b>31.0</b>
	<b>Total</b>		<b>34.0</b>	<b>35.0</b>	<b>34.0</b>	<b>32.0</b>	<b>32.0</b>
	Change from previous year		0	1	-1	-2	0

College of Nursing  
Enrollment by Ethnic Group  
Fall 2006 to Fall 2010



\*Native American

Ethnic Group (IPEDS Categories)	Year									
	2006		2007		2008		2009		2010	
	N	%	N	%	N	%	N	%	N	%
White	93	24%	81	23%	81	21%	99	25%	90	24%
Black	236	61%	222	62%	242	63%	229	58%	213	56%
Hispanic	31	8%	17	5%	14	4%	17	4%	23	6%
Asian/Pacific Islander	19	5%	24	7%	34	9%	35	9%	37	10%
Native American									1	0%
International	1	<1%			4	1%	5	1%	3	1%
Unknown	10	3%	14	4%	12	3%	9	2%	10	3%
% Black and Hispanic		68%		67%		66%		62%		62%
<b>Total</b>	<b>390</b>		<b>358</b>		<b>387</b>		<b>394</b>		<b>377</b>	

- The Integrated Postsecondary Education Data Set (IPEDS) ethnic categories are those used by the U.S. Department of Education.

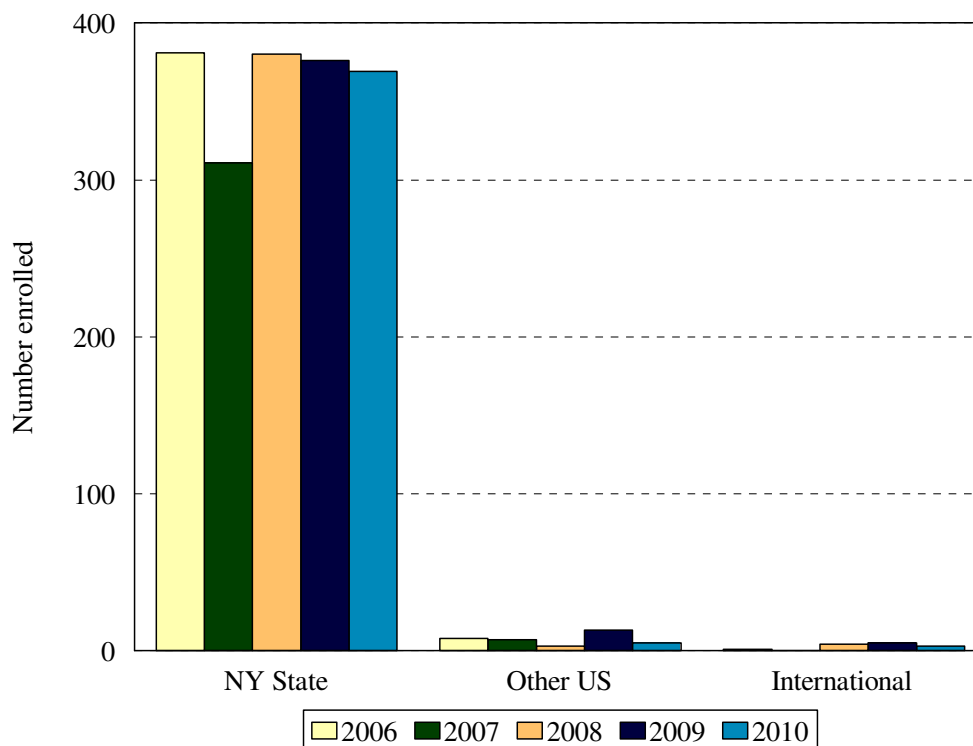


ENROLLMENT BY ETHNIC GROUP BY PROGRAM  
COLLEGE OF NURSING

Program	2006						2007					
	White	Black	Hispanic	Asian	International	Unknown	White	Black	Hispanic	Asian	International	Unknown
NACC	21	21	3	5	0	0	24	27	2	8	0	0
RNBS	29	85	11	4	1	2	21	64	7	5	0	7
000	2	3	1	0	0	0	0	0	0	0	0	0
<b>Total Und.</b>	<b>52</b>	<b>109</b>	<b>15</b>	<b>9</b>	<b>1</b>	<b>2</b>	<b>45</b>	<b>91</b>	<b>9</b>	<b>13</b>	<b>0</b>	<b>7</b>
FNPC	0	2	0	0	0	1	0	1	0	0	0	0
930												
CNSM							2	27	0	1	0	1
CNSA	3	24	0	1	0	2						
902	0	6	0	0	0	0						
FNPM	13	66	5	2	0	3	18	70	2	3	0	4
940	14	14	4	4	0	1						
941	6	2	4	2	0	0						
NRAN							9	14	3	5	0	1
950												
966	4	5	1	1	0	0						
NRMS							5	10	1	1	0	0
WNPM	1	8	2	0	0	0	2	7	2	1	0	1
999							0	2	0	0	0	0
<b>Total Grad.</b>	<b>41</b>	<b>127</b>	<b>16</b>	<b>10</b>	<b>0</b>	<b>8</b>	<b>36</b>	<b>131</b>	<b>8</b>	<b>11</b>	<b>0</b>	<b>7</b>
<b>Total</b>	<b>93</b>	<b>236</b>	<b>31</b>	<b>19</b>	<b>1</b>	<b>10</b>	<b>81</b>	<b>222</b>	<b>17</b>	<b>24</b>	<b>0</b>	<b>14</b>

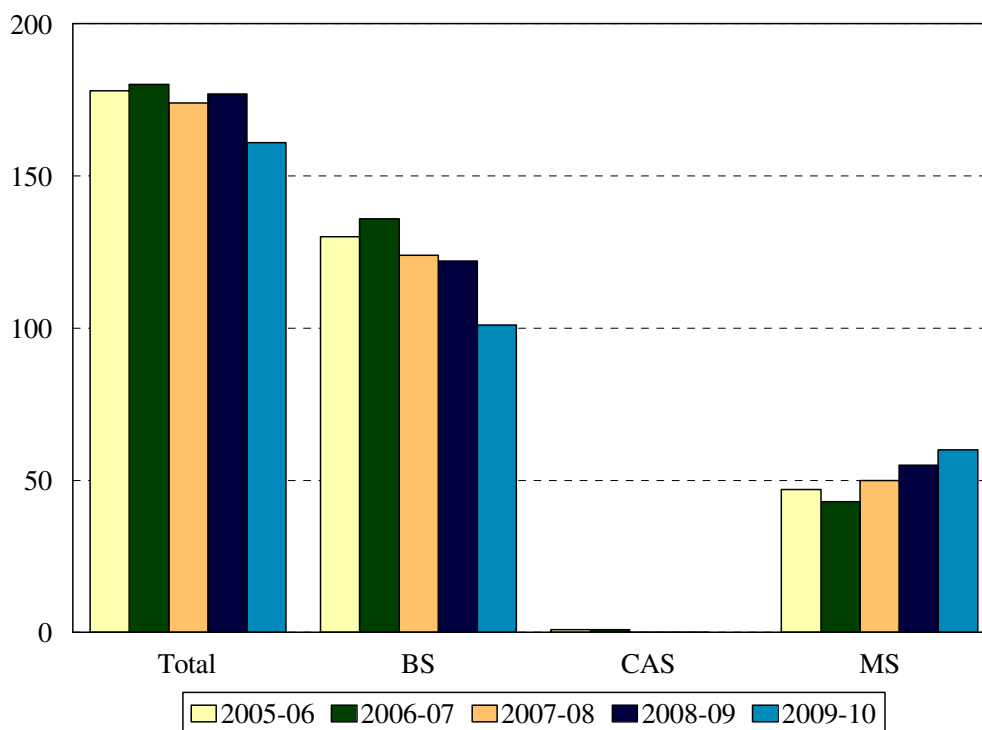
Program	2008						2009						2010					
	White	Black	Hispanic	Asian	International	Unknown	White	Black	Hispanic	Asian	International	Unknown	White	Black	Hispanic	Asian	International	Unknown
NACC	24	12	1	5	1	3	31	13	7	4	2	1	29	8	2	6	1	3
RNBS	27	82	7	12	2	4	31	75	5	13	3	4	30	90	12	12	2	2
000																		
<b>Total Undergrad</b>	<b>51</b>	<b>94</b>	<b>8</b>	<b>17</b>	<b>3</b>	<b>7</b>	<b>62</b>	<b>88</b>	<b>12</b>	<b>17</b>	<b>5</b>	<b>5</b>	<b>59</b>	<b>98</b>	<b>14</b>	<b>18</b>	<b>3</b>	<b>5</b>
FNPC	1	1	0	0	0	1	0	1	0	0	0	1	0	2	1	0	0	0
930																		
CNSM	0	10	0	5	0	0	0	17	0	0	0	0	1	12	0	0	0	0
CNSA	2	12	0	0	0	1	1	3	0	0	0	0	0	4	0	0	0	0
902	0	2	0	0	0	0												
FNPM	19	88	2	8	1	2	25	90	3	14	0	1	18	73	4	13	0	2
940																		
941																		
NRAN	1	9	1	3	0	1	3	6	1	3	0	0	4	5	1	6	0	1
950																		
966																		
NRMS	2	12	1	0	0	0	5	12	0	0	0	0	5	8	1	0	0	2
WNPM	5	11	2	1	0	0	3	11	1	1	0	1	3	11	2	0	0	0
999	0	3	0	0	0	0												
<b>Total Grad.</b>	<b>30</b>	<b>148</b>	<b>6</b>	<b>17</b>	<b>1</b>	<b>5</b>	<b>37</b>	<b>140</b>	<b>5</b>	<b>18</b>	<b>0</b>	<b>3</b>	<b>31</b>	<b>115</b>	<b>9</b>	<b>19</b>	<b>0</b>	<b>5</b>
<b>Total</b>	<b>81</b>	<b>242</b>	<b>14</b>	<b>34</b>	<b>4</b>	<b>12</b>	<b>99</b>	<b>229</b>	<b>17</b>	<b>35</b>	<b>5</b>	<b>9</b>	<b>90</b>	<b>213</b>	<b>23</b>	<b>37</b>	<b>3</b>	<b>10</b>

College of Nursing  
Enrollment by Permanent Residence  
Fall 2006 to Fall 2010



Residency	Year									
	2006		2007		2008		2009		2010	
	N	% of total	N	% of total	N	% of total	N	% of total	N	% of total
New York State	381	98%	311	87%	380	98%	376	95%	369	98%
New York City	340	87%	304	85%	331	86%	329	84%	314	83%
Bronx	11	3%	16	4%	16	4%	19	5%	12	3%
Kings (Brooklyn)	218	56%	193	54%	211	55%	198	50%	180	48%
Manhattan	19	5%	19	5%	9	2%	16	4%	21	6%
Queens	89	23%	71	20%	87	22%	89	23%	91	24%
Richmond (Staten I.)	3	1%	5	1%	8	2%	7	2%	10	3%
Other U.S.	8	2%	7	2%	3	<1%	13	3%	5	1%
International	1	<1%	0	0%	4	1%	5	1%	3	1%
<b>Total</b>	<b>390</b>		<b>358</b>		<b>387</b>		<b>394</b>		<b>377</b>	

Degrees Granted by Level  
College of Nursing  
2005-2006 to 2009-2010



Degrees	Code	Year				
		2005-06	2006-07	2007-08	2008-09	2009-10
Generic-Nursing BS	291					
RN Completion BS	RNBS		44	82	67	56
Accelerated Nursing	NACC	130	92	42	55	45
Family Nurse Practitioner CAS	FNPC	1	1		0	
Women's Nurse Practitioner CAS	930					
Clinical Nurse Specialist MS	CNSM	1				2
Clinical Nurse Spec. Adult MS	CNSA		7	2	3	7
Clinical Nurse Spec. HRMI MS	CNSH			1	1	2
Family Nurse Practitioner MS	FNPM	18	13	26	32	32
Nurse Anesthesia MS: Kings	940	26	10			
Nurse Anesthesia MS: Harlem	941		11			
Nurse Anesthesia MS	NRAN			16	14	5
Nurse Midwifery Completion MS	950	1				
Nurse Midwifery: RN MS	966		2			
Nurse Midwifery MS	NRMS			3	3	8
Women's Nurse Practitioner MS	WNPM	1		2	2	4
<b>Total</b>		<b>178</b>	<b>180</b>	<b>174</b>	<b>177</b>	<b>161</b>
Change from previous year		-8%	1%	-3%	2%	-9%

COLLEGE OF NURSING  
DEGREES EARNED BY ETHNIC GROUP

Ethnic Group	Year				
	2005-06	2006-07	2007-08	2008-09	2009-10
White	39	36	48	46	44
% change	8%	-8%	33%	-4%	-4%
Black	103	116	98	101	86
% change	-26%	13%	-16%	3%	-15%
Hispanic	7	17	9	10	6
% change	75%	143%	-47%	11%	-40%
Asian	21	10	11	18	15
% change	62%	-52%	10%	64%	-17%
Native American	0	0	0	0	0
% change					
International	3	0	0	0	0
% change		-100%			
Unknown	5	1	8	2	10
% change	400%	-80%	700%	-75%	400%
<b>Total</b>	<b>178</b>	<b>180</b>	<b>174</b>	<b>177</b>	<b>161</b>
Change from previous year	-8%	1%	-3%	2%	-9%