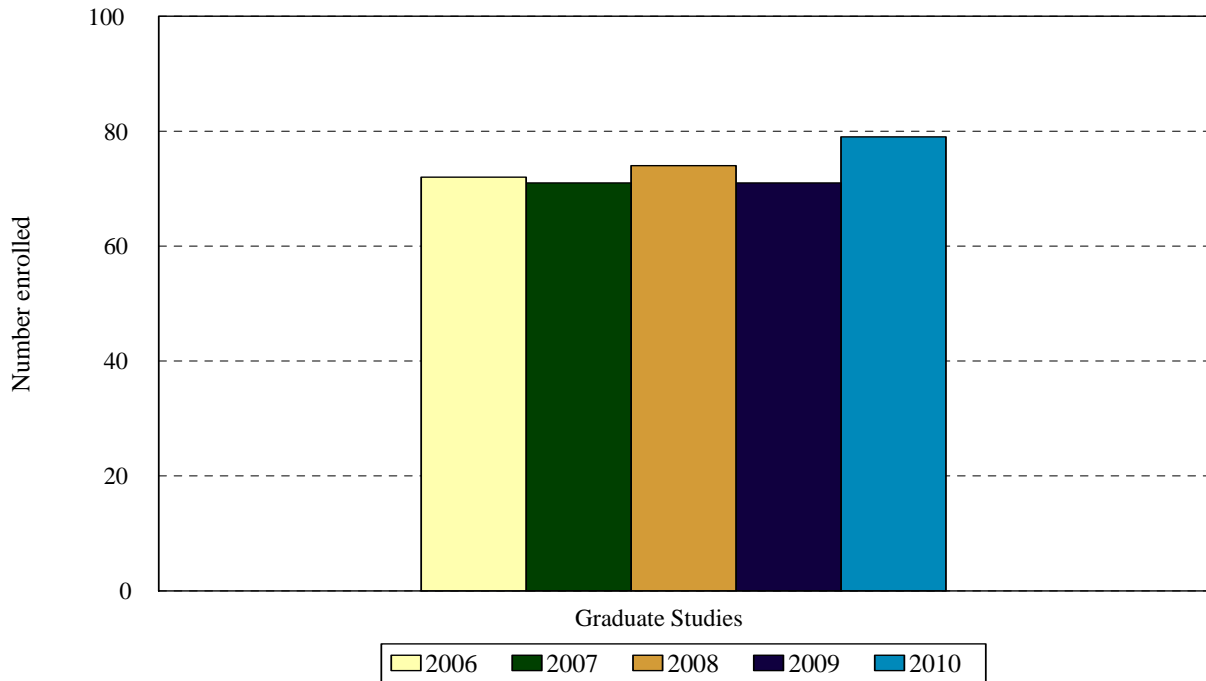


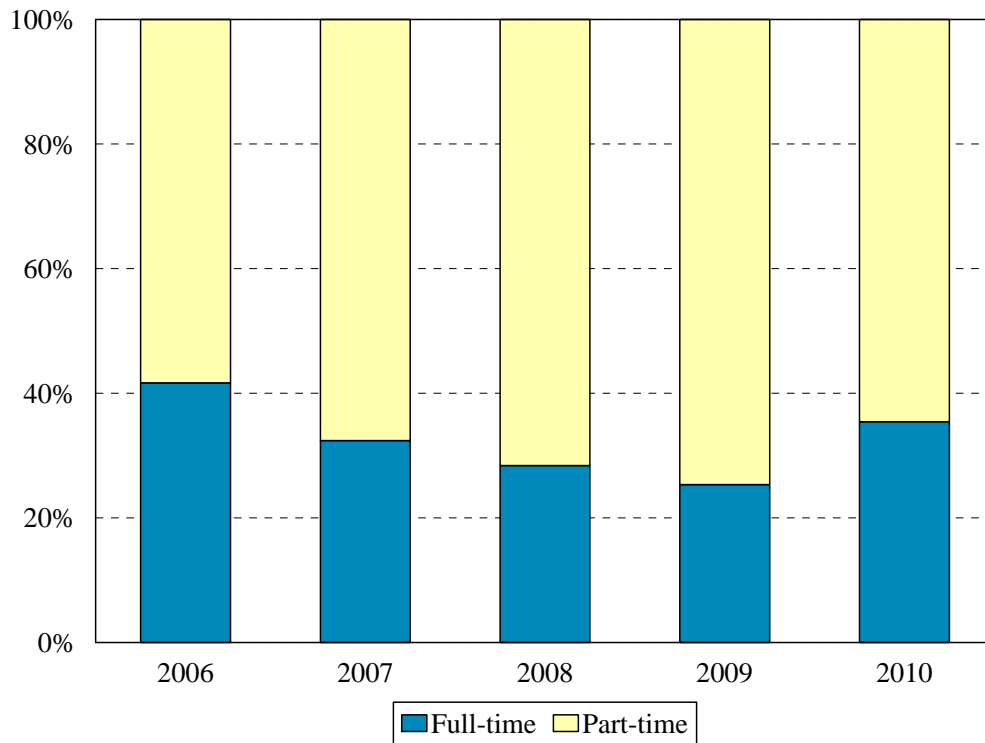
## School of Graduate Studies Enrollment

Fall 2006 to Fall 2010



School	Year				
	2006	2007	2008	2009	2010
Graduate Studies	72	71	74	71	79
Change from previous year	-3%	-1%	4%	-4%	11%

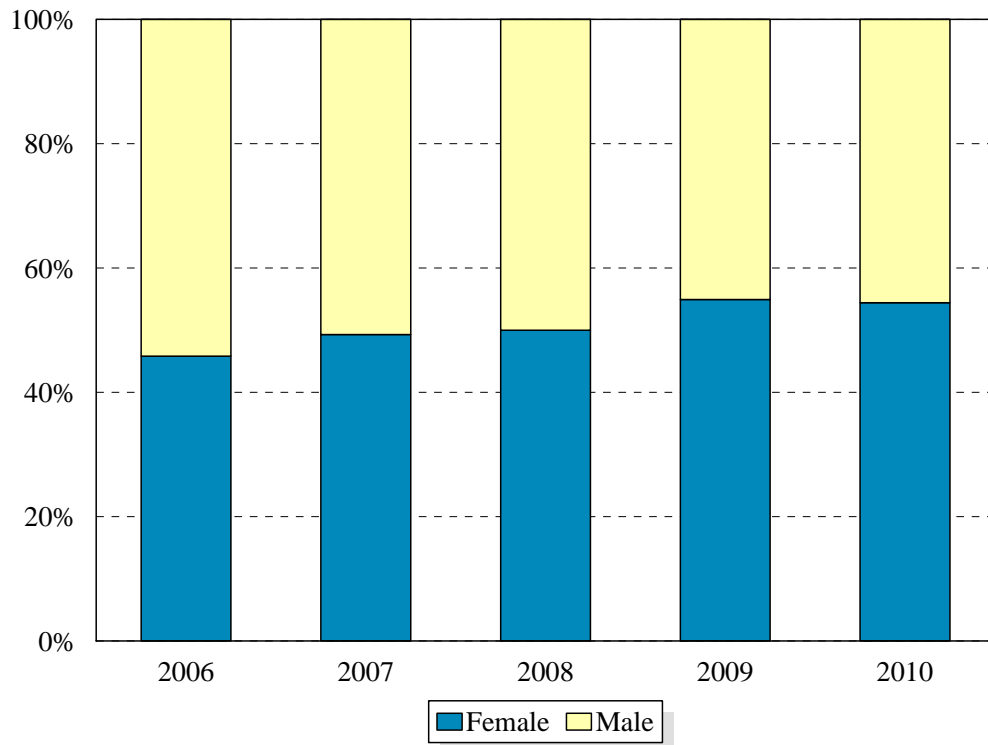
### School of Graduate Studies Enrollment by Full- and Part-time Status Fall 2006 to Fall 2010



Enrollment Levels	Year				
	2006	2007	2008	2009	2010
Full-time	30	23	21	18	28
Part-time*	42	48	53	53	51
% Full-time	42%	32%	28%	25%	35%
<b>Total</b>	<b>72</b>	<b>71</b>	<b>74</b>	<b>71</b>	<b>79</b>

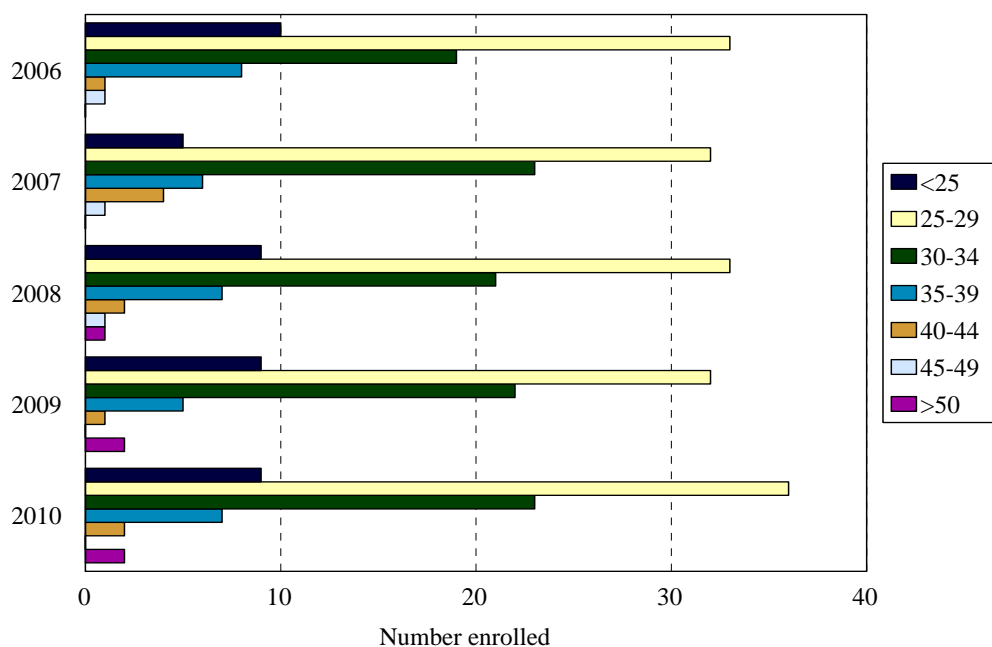
\*Students are registered for less than full time credit hours after the first year but they are engaged in research on a full time basis.

## School of Graduates Studies Enrollment by Gender Fall 2006 to Fall 2010



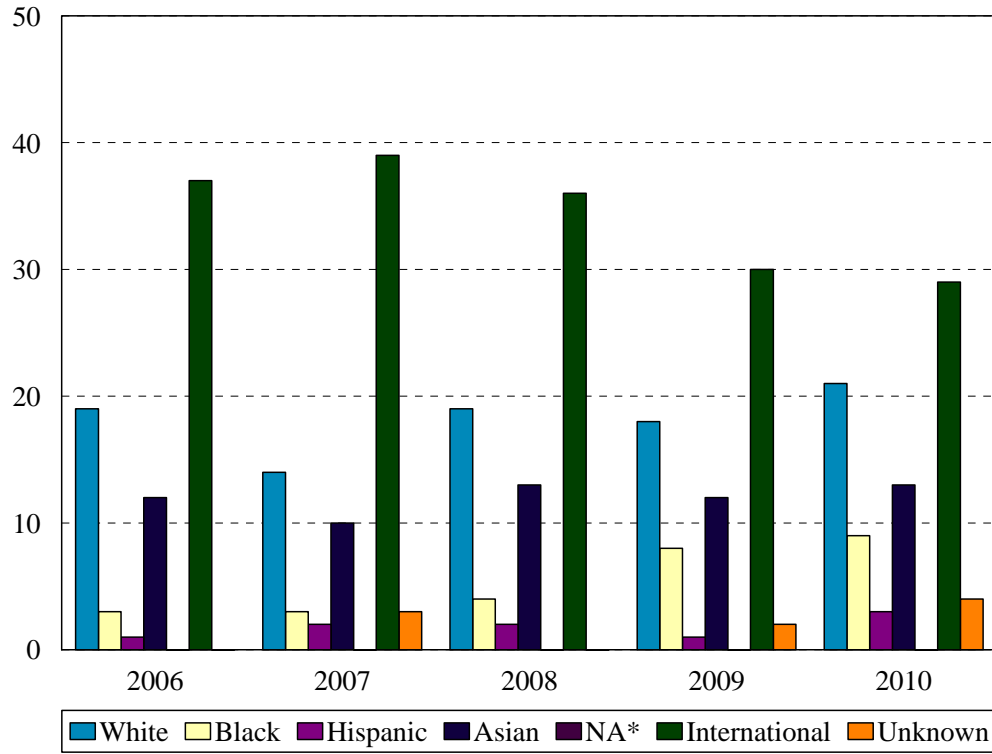
Gender	Year				
	2006	2007	2008	2009	2010
Female	33	35	37	39	43
Male	39	36	37	32	36
% Female	46%	49%	50%	55%	54%
<b>Total</b>	<b>72</b>	<b>71</b>	<b>74</b>	<b>71</b>	<b>79</b>

## School of Graduate Studies Enrollment by Age Level Fall 2006 to Fall 2010



Age	Year									
	2006		2007		2008		2009		2010	
	N	%	N	%	N	%	N	%	N	%
Under 25	10	14%	5	7%	9	12%	9	13%	9	11%
25-29	33	46%	32	45%	33	45%	32	45%	36	45%
30-34	19	26%	23	32%	21	28%	22	31%	23	29%
35-39	8	11%	6	8%	7	9%	5	7%	7	9%
40-44	1	1%	4	6%	2	3%	1	1%	2	3%
45-49	1	1%	1	1%	1	1%	0	0%	0	0%
50 and over	0	0%	0	0%	1	1%	2	3%	2	3%
Median age	28		29		29		29		29	
Age range	22-46		22-48		23-58		22-59		22-60	
<b>Total</b>	<b>72</b>		<b>71</b>		<b>74</b>		<b>71</b>		<b>79</b>	

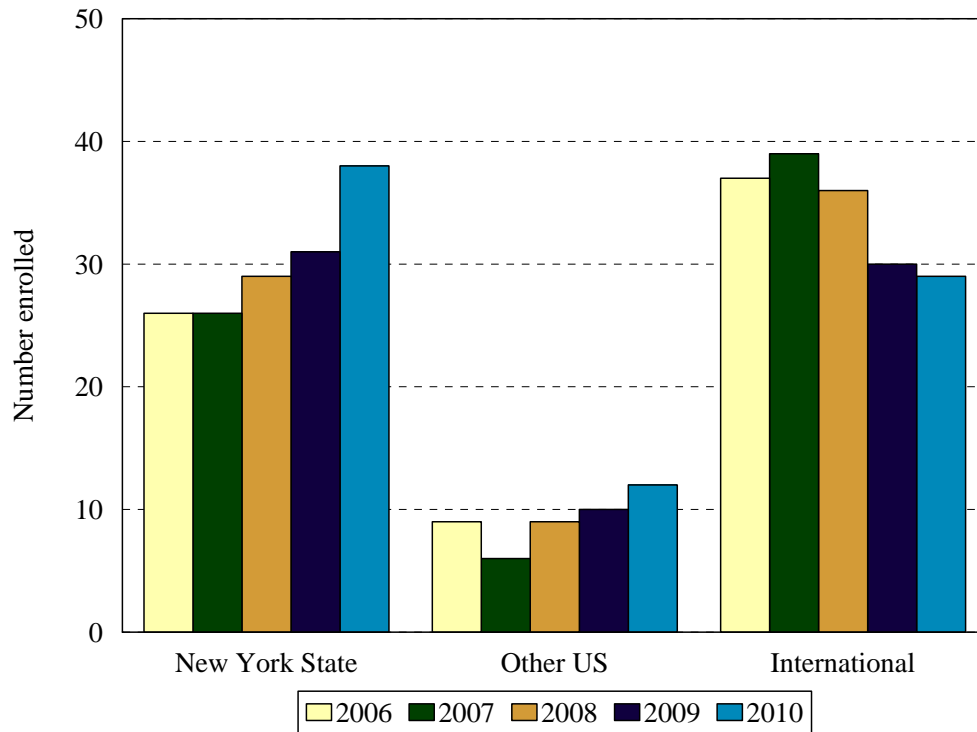
### School of Graduate Studies Enrollment by Ethnic Group Fall 2006 to Fall 2010



Ethnic Group (IPEDS Categories)	Year									
	2006		2007		2008		2009		2010	
	N	%	N	%	N	%	N	%	N	%
White	19	26%	14	20%	19	26%	18	25%	21	16%
Black	3	4%	3	4%	4	5%	8	11%	9	11%
Hispanic	1	1%	2	3%	2	3%	1	1%	3	4%
Asian/Pacific Islander	12	17%	10	14%	13	18%	12	17%	13	16%
Native American	0	0%	0	0%	0	0%	0	0%	0	0%
International	37	51%	39	55%	0	0%	30	42%	29	37%
Unknown	0	0%	3	4%	36	49%	2	3%	4	5%
% Black and Hispanic		6%		7%		8%		12%		15%
<b>Total</b>	<b>72</b>		<b>71</b>		<b>74</b>		<b>71</b>		<b>79</b>	

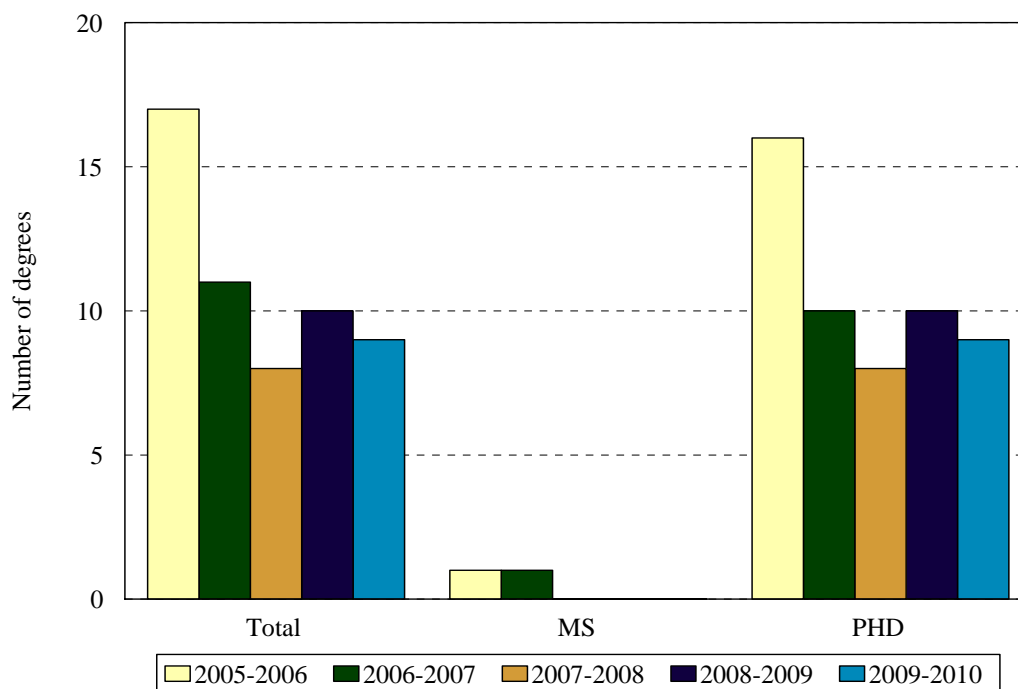
- The Integrated Postsecondary Education Data Set (IPEDS) ethnic categories are those used by the U.S. Department of Education.

**School of Graduate Studies**  
**Enrollment by Permanent Residence**  
 Fall 2006 to Fall 2010



Residency	Year									
	2006		2007		2008		2009		2010	
	N	% of total	N	% of total	N	% of total	N	% of total	N	% of total
New York State	26	36%	26	37%	29	39%	31	44%	38	48%
New York City	24	33%	24	34%	27	36%	26	37%	33	42%
Bronx	1	1%	0	0%	1	1%	0	0%	2	3%
Kings (Brooklyn)	15	21%	13	18%	13	18%	15	21%	22	28%
Manhattan	4	6%	5	7%	6	8%	5	7%	6	8%
Queens	3	4%	5	7%	5	7%	4	6%	2	3%
Richmond (Staten I.)	1	1%	1	1%	2	3%	2	3%	1	1%
Other U.S.	9	13%	6	8%	9	12%	10	14%	12	15%
International	37	52%	39	55%	36	49%	30	42%	29	37%
<b>Total</b>	<b>72</b>		<b>71</b>		<b>74</b>		<b>71</b>		<b>79</b>	

## School of Graduate Studies Degrees Granted 2005-2006 to 2009-2010



	Year				
	2005-2006	2006-2007	2007-2008	2008-2009	2009-2010
<b>Master of Science</b>	1	1	0	0	0
Anatomy		1			
Biochemistry					
Microbiology		0			
Neural and Behavioral Science					
Pharmacology	1				
<b>Doctor of Philosophy</b>	16	11	8	10	9
Anatomy & Cell Biology					
Biochemistry					
Biomedical Engineering					1
Microbiology & Cell Biology		2			
Molecular & Cell Biology	11	6	4	5	6
Neural and Behavioral Science	5	3	4	5	2
Pathology					
Pharmacology					
Physiology					
<b>Total</b>	17	12	8	10	9