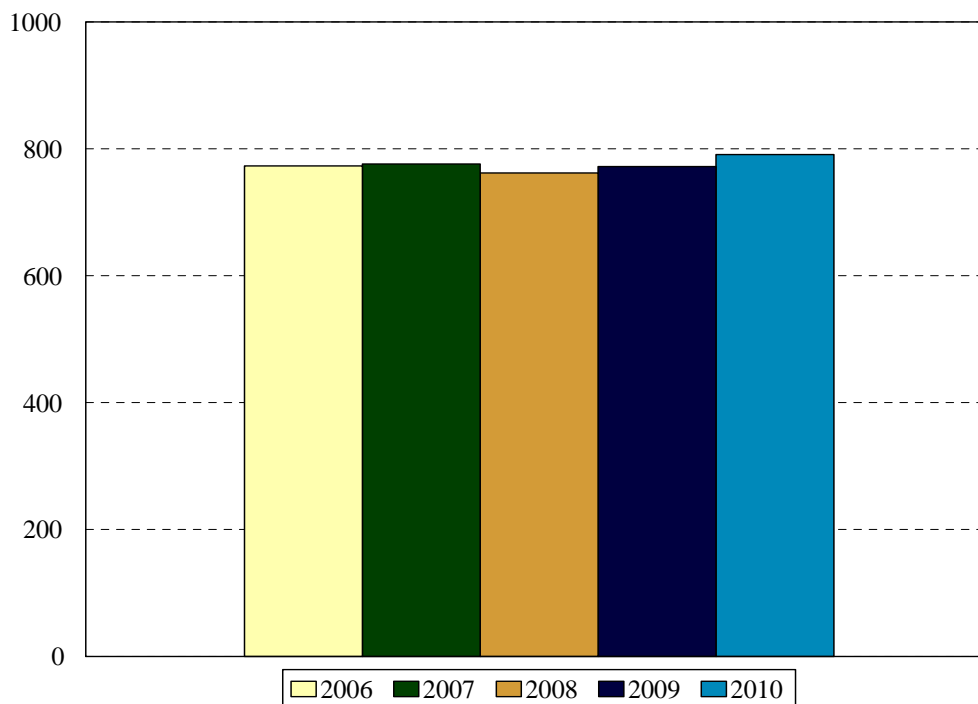


College of Medicine Enrollment

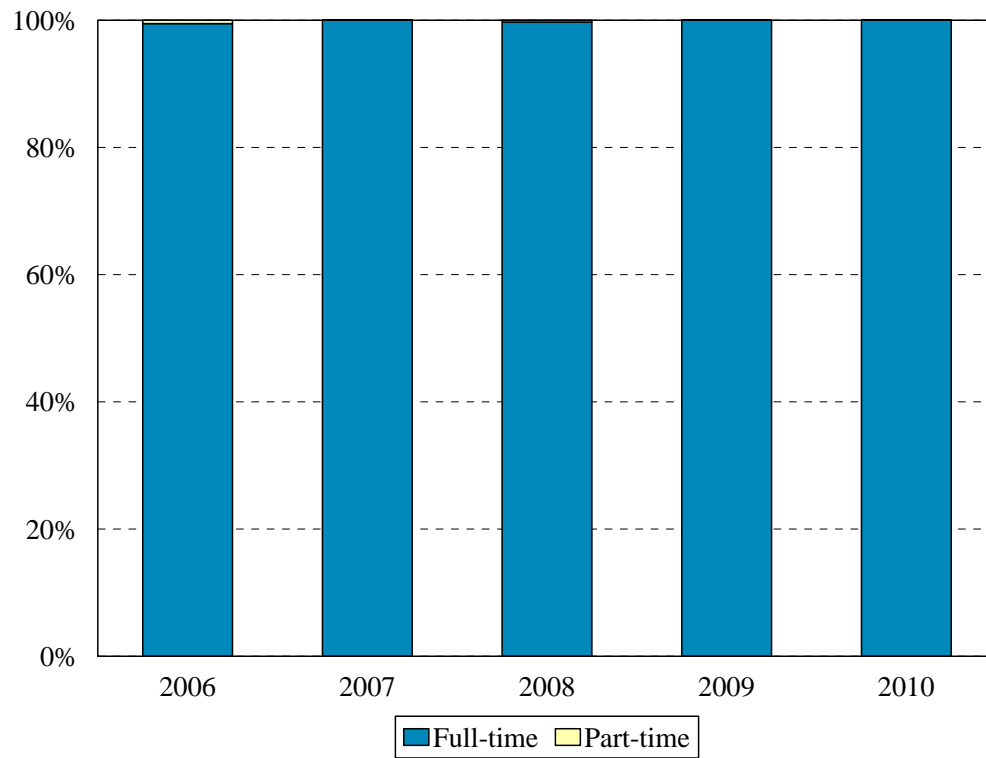


Fall 2006 to Fall 2010

College of Medicine MD and MD/MPH	Year				
	2006	2007	2008	2009	2010
New students	184	170	185	193	177
Continuing students	589	606	577	579	588
Total	773	776	762	772	791
Change from previous year	0%	0%	-2%	1%	2%

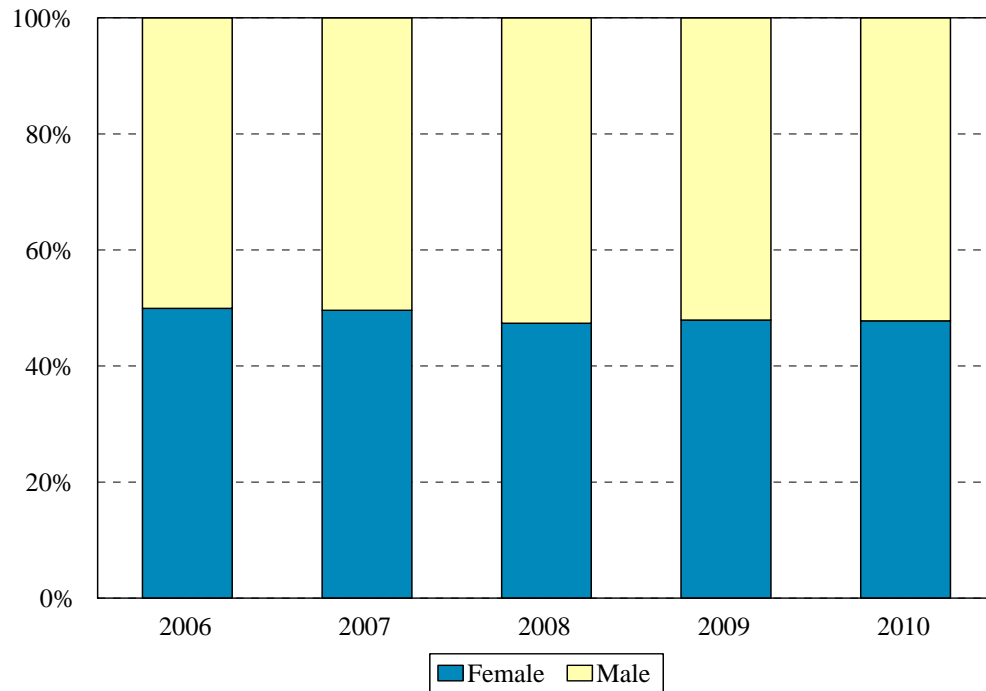
- College of Medicine MD Program totals reflect a planned reduction in entering class size to 180 beginning in 1997 and a planned increase beginning in 2000.
- The total in 2002 includes 6 students concurrently enrolled in the MPH Program, and the total in 2003, 10 students.
- The total in 2005 does not include 2 oral surgeons attending required college of medicine courses.

College of Medicine
Enrollment by Full- and Part-time Status
 Fall 2006 to Fall 2010



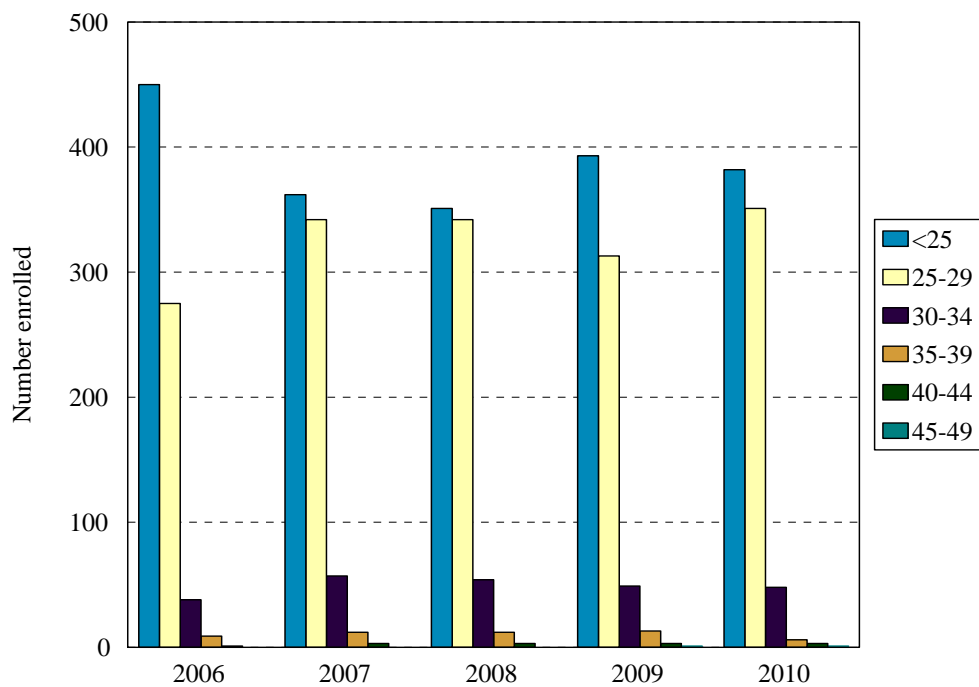
Enrollment Levels	Year				
	2006	2007	2008	2009	2010
Full-time	769	776	760	772	791
Part-time	4	0	2	0	0
% Full-time	99%	100%	99%	100%	100%
Total	773	776	762	772	791

**College of Medicine
Enrollment by Gender**
Fall 2006 to Fall 2010



Gender	Year			Year			Year			Year			Year		
	2006			2007			2008			2009			2010		
	F	M	%F	F	M	%F	F	M	%F	F	M	%F	F	M	%F
New 1 st year	91	93	49%	85	85	50%	87	98	47%	93	100	48%	77	105	42%
Continuing	295	294	50%	300	306	50%	274	303	47%	277	302	48%	301	308	49%
Total	386	387	50%	385	391	50%	361	401	47%	370	402	48%	378	413	48%
Change from previous year			2%			0%			-3%			1%			0%

College of Medicine
Enrollment by Age Level
 Fall 2006 to Fall 2010



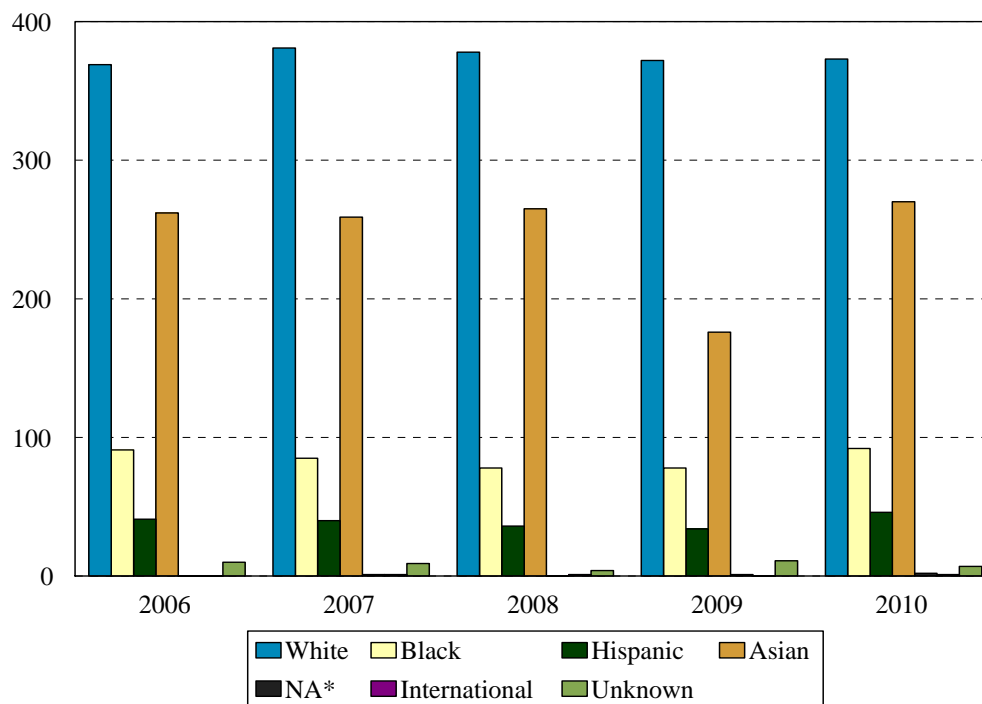
All Medical Students

Age	Year									
	2006		2007		2008		2009		2010	
	N	%	N	%	N	%	N	%	N	%
Under 25	450	58%	362	47%	351	46%	393	51%	382	48%
25-29	275	36%	342	44%	342	45%	313	41%	351	44%
30-34	38	5%	57	7%	54	7%	49	6%	48	6%
35-39	9	1%	12	2%	12	2%	13	2%	6	1%
40-44	1	<1%	3	<1%	3	<1%	3	<1%	3	<1%
45-49							1	<1%	1	<1%
50 and over										
Median age	24		22		23		24		25	
Age range	20-40		19-43		20-40		20-45		21-46	
Total	773		776		762		772		791	

New First Year Medical Students
Enrollment by Age Level

Age	Year									
	2006		2007		2008		2009		2010	
	N	%	N	%	N	%	N	%	N	%
Under 25	139	76%	127	75%	135	73%	159	82%	147	81%
25-29	38	21%	37	22%	44	24%	25	13%	30	16%
30-34	5	3%	2	1%	4	2%	7	4%	5	3%
35-39	2	1%	3	2%	1	<1%	2	1%		
40-44	0	0%	1	1%	1	<1%				
45-49										
50 and over										
Median age	23		23		23		23		23	
Age range	20-36		19-43		20-40		20-37		21-31	
Total	184		170		185		193		185	

College of Medicine Enrollment by Ethnic Group Fall 2006 to Fall 2010



*Native American students numbered 0 in 2006, 1 in 2007, 0 in 2008, 1 in 2009 and 2 in 2010

All Medical Students

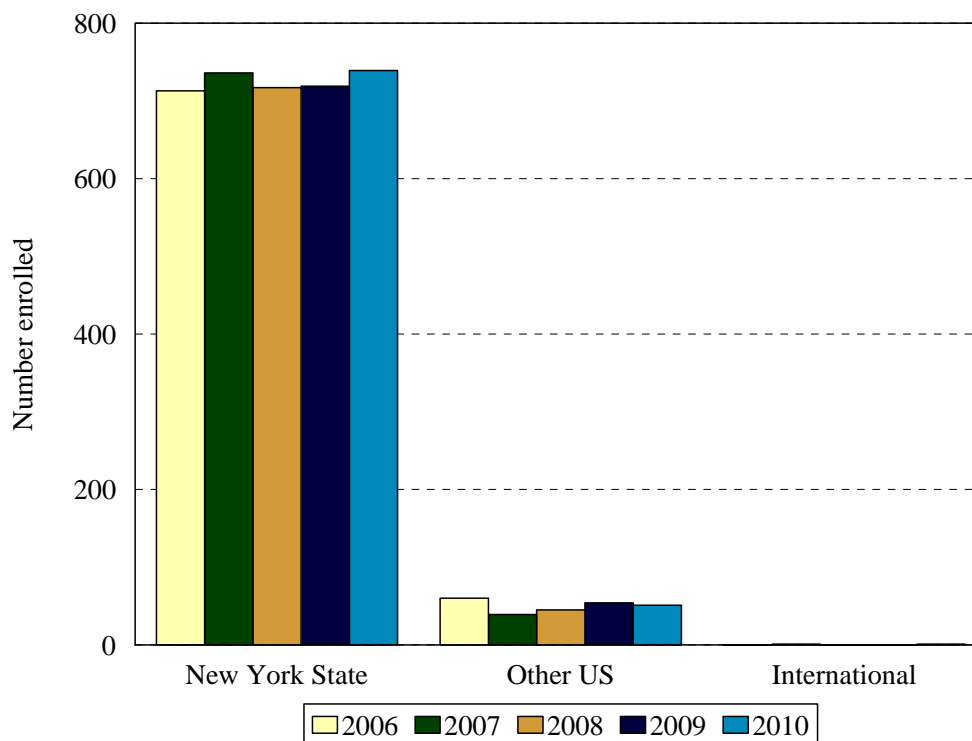
Ethnic Group (IPEDS Categories)	Year									
	2006		2007		2008		2009		2010	
	N	%	N	%	N	%	N	%	N	%
White	369	48%	381	49%	378	50%	372	48%	373	47%
Black	91	12%	85	11%	78	10%	78	10%	92	12%
Hispanic	41	5%	40	5%	36	5%	34	4%	46	6%
Asian/Pacific Islander	262	34%	259	33%	265	35%	276	36%	270	34%
Native American	0	0%	1	<1%	0		1	<1%	2	<1%
International	0	0%	1	<1%	1	<1%	0	0%	1	<1%
Unknown	10	1%	9	1%	4	1%	11	1%	7	1%
<i>Black and Hispanic</i>	132	17%	125	16%	114	15%	112	14%	138	17%
Total	773		776		762		772		791	

- The Integrated Postsecondary Education Data Set (IPEDS) ethnic categories are those used by the U.S. Department of Education.

New First Year Medical Students Enrollment by Ethnic Group

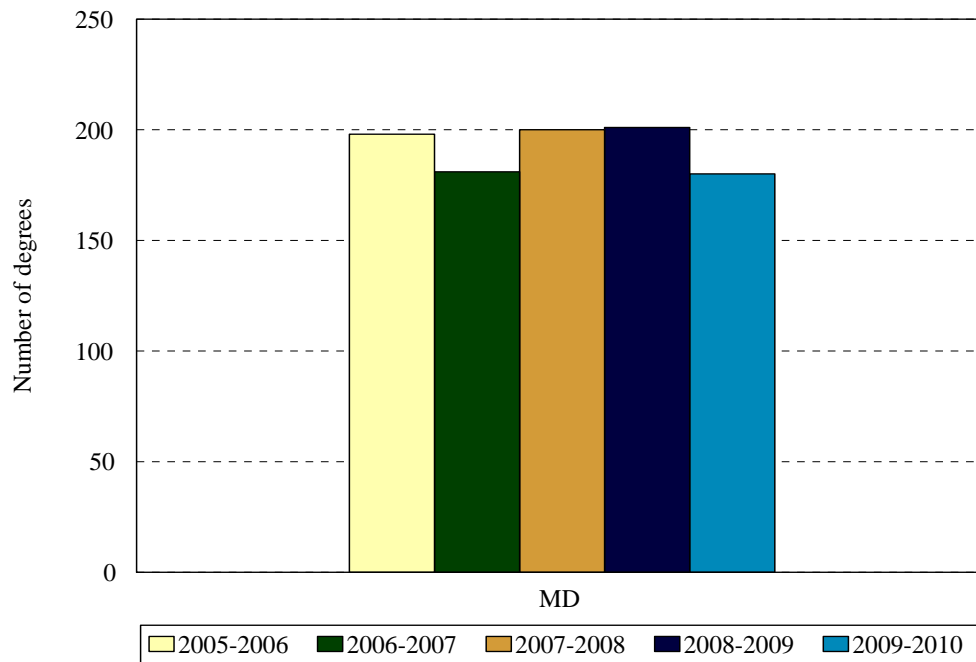
Ethnic Group (IPEDS Categories)	Year									
	2006		2007		2008		2009		2010	
	N	%	N	%	N	%	N	%	N	%
White	92	50%	84	49%	97	52%	88	46%	86	47%
Black	17	9%	17	10%	16	9%	20	10%	19	10%
Hispanic	7	4%	12	7%	6	3%	5	3%	8	4%
Asian/Pacific Islander	65	35%	51	30%	66	36%	75	39%	66	36%
Native American			1	1%					1	1%
International										
Unknown	3	2%	5	3%	0	0%	5	3%	2	1%
<i>Black and Hispanic</i>	24	13%	29	17%	22	12%	25	13%	27	15%
Total	184		170		185		193		185	

College of Medicine
Enrollment by Permanent Residence
 Fall 2006 to Fall 2010



Residency	Year									
	2006		2007		2008		2009		2010	
	N	% of total	N	% of total	N	% of total	N	% of total	N	% of total
New York State	713	92%	736	95%	717	94%	719	93%	739	93%
New York City	459	59%	476	61%	476	62%	493	64%	518	65%
Bronx	12	2%	13	2%	20	3%	26	3%	20	3%
Kings (Brooklyn)	227	29%	259	33%	264	35%	265	34%	283	36%
Manhattan	68	9%	59	8%	52	7%	53	7%	56	7%
Queens	125	16%	119	15%	118	15%	120	16%	121	15%
Richmond (Staten I.)	27	3%	26	3%	22	3%	29	4%	38	5%
Other U.S.	60	8%	39	5%	45	6%	54	7%	51	6%
International	0	0%	1	<1%	0	0%	0	0%	1	<1%
Total	773		776		762		772		791	

College of Medicine
Degrees Granted by Level
 Fiscal Years 2005-2006 to 2009-2010



Degrees granted during July 1 (year 1) to June 30 (year 2) periods.

Degree Level	Year				
	2005-2006	2006-2007	2007-2008	2008-2009	2009-2010
Doctor of Medicine	198	181	200	201	180
Change from previous year	-1%	-9%	10%	1%	-10%

DEGREES EARNED BY ETHNIC GROUP
COLLEGE OF MEDICINE

Ethnic Group	Year				
	2005-2006	2006-2007	2007-2008	2008-2009	2009-2010
White	93	86	97	97	91
% change	-11%	-8%	11%	0%	-6%
Black	22	20	23	20	13
% change	-12%	-9%	13%	-13%	-35%
Hispanic	10	12	10	11	5
% change	150%	20%	-20%	10%	-55%
Asian	70	61	63	72	69
% change	4%	-13%	3%	14%	-4%
Native American	0	0	0	0	0
International	0	0	0	0	0
% change					
Unknown	3	2	1	1	2
% change	200%	-33%	-100%	0%	100%
Total	198	181	200	201	180
Change from previous year	-1%	-9%	7%	1%	-10%