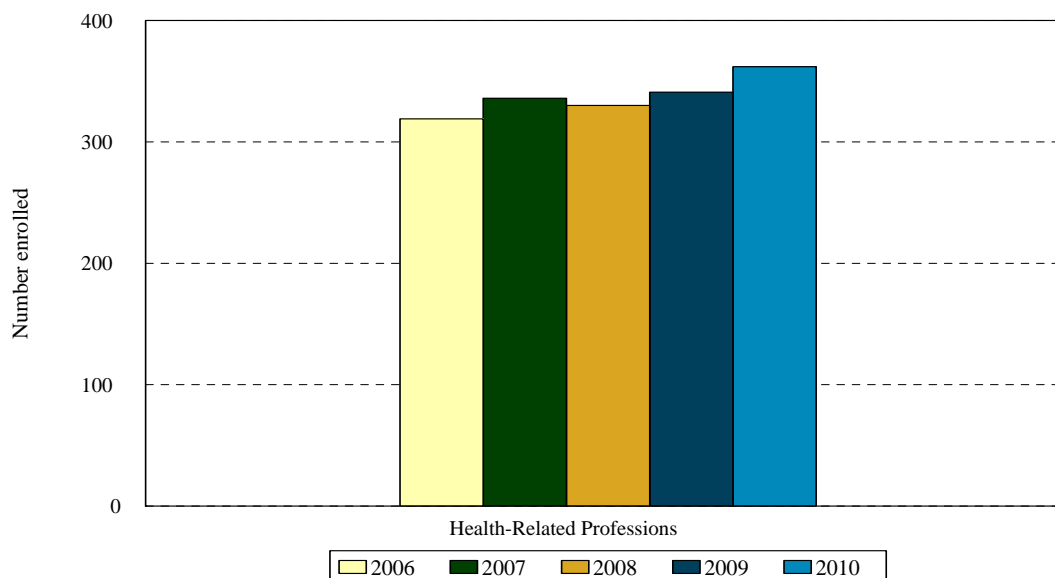
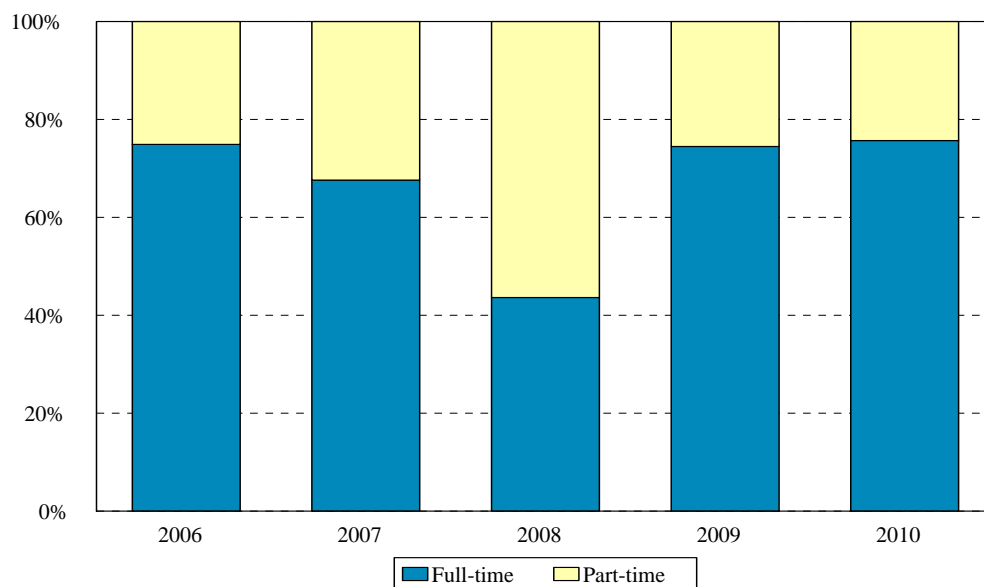


College of Health Related Professions Enrollment Fall 2006 to Fall 2010



Award	Program	Code	Year				
			2006	2007	2008	2009	2010
BS	Diagnostic Medical Imaging	DIMI	50	51	52	48	47
BS	Physical Therapy (BS and BS/MS)	PTBS	17	26	21	23	22
BS	Physician's Assistant	PABS	75	66	71	69	76
	Non-matriculated	000	0	1	0		1
	Total Undergraduate		162	144	144	140	146
CAS	Midwifery	MWIC			1		1
CAS	Midwifery- Direct Entry	MWDC			1	1	
CERT	Midwifery- RN	965	3				
CERT	Nurse Midwifery	MWNC					
MS	Midwifery- Direct Entry	MWDM	4		3	2	1
MS	Midwifery: RN	968	7				
MS	Midwifery (MS completion)	MWCM	2		3		
MS	Midwifery	MWIF		17	16	20	26
MS	Occupational Therapy	OTMS	84	94	90	96	101
MS	Physical Therapy (BS and BS/MS)	PTMS	15	15	3		
MS	Medical Informatics	MIMS	35	42	31	38	45
DPT	Doctor of Physical Therapy	DPT		16	38	42	42
	Non-matriculated	999	7	5	0		
	Total Graduate		157	192	186	201	216
	Total		319	336	330	341	362
	Change from previous year		8%	5%	-2%	3%	6%

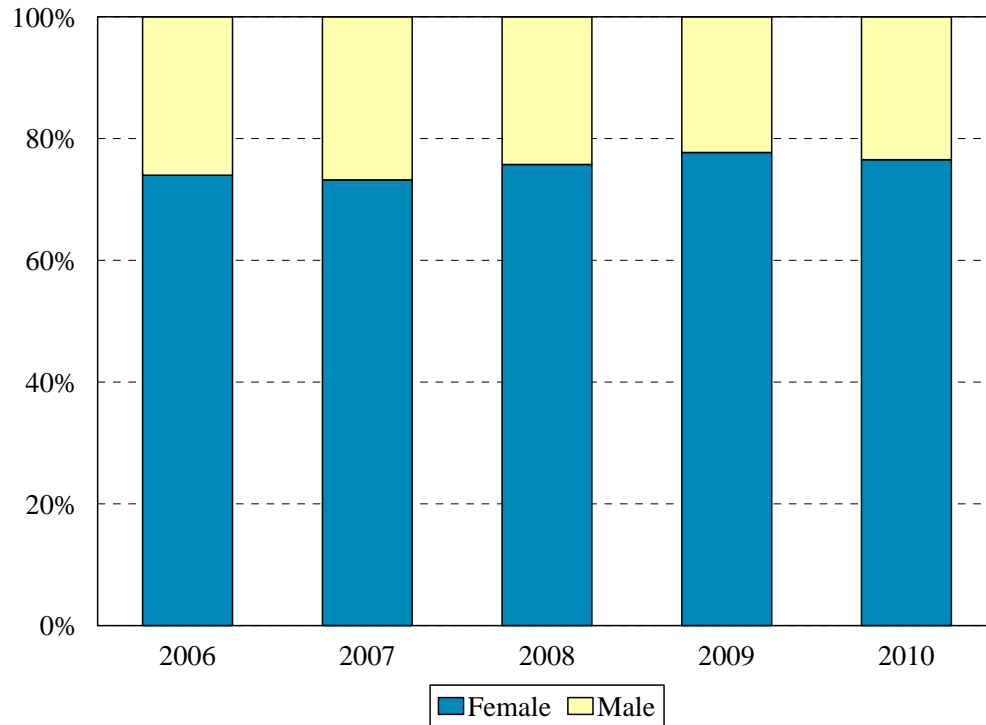
College of Health Related Professions
Enrollment by Full-time and Part-time Status
Fall 2006 to Fall 2010



Program	Code	Year					
		2006			2007		
		FT	PT	%FT	FT	PT	%FT
Diagnostic Medical Imaging	DIMI	42	8	84%	41	10	80%
Physical Therapy	294						
Physical Therapy: BS/MS	PTBS	14	3	82%	20	6	77%
Physician's Assistant	PABS	66	9	88%	56	10	85%
Non-matriculated	000				0	1	0%
Total Undergraduate		142	20	88%	117	27	81%
Midwifery Certificate	MWIC						
Midwifery Direct Entry CAS	MWDC						
Midwifery- RN	965	3	0	100%			
Midwifery- RN: CAS,MS	966	3	1	75%			
Midwifery- Direct Entry MS	MWDM	4	3	57%			
Midwifery- RN MS	968	0	2	0%			
Midwifery (MS completion)	MWCM				8	9	47%
Occupational Therapy	OTMS	61	23	73%	55	39	59%
Physical Therapy (BS/MS)	PTMS	15	0	100%	14	1	93%
Medical Informatics	MIMS	11	24	31%	23	19	55%
Doctor of Physical Therapy	DPT				16	0	100%
Non-matriculated	999	0	7	0%	0	5	0%
Total Graduate		97	60	62%	117	75	61%
Total		239	80	75%	234	102	70%
Change from previous year				0%			-5%

Program	Code	Year								
		2008			2009			2010		
		FT	PT	%FT	FT	PT	%FT	FT	PT	%FT
Diagnostic Medical Imaging	DIMI	40	12	77%	43	5	90%	43	4	91%
Physical Therapy: BS	294									
Physical Therapy: BS/MS	PTBS	20	1	95%	22	1	96%	21	1	95%
Physician's Assistant	PABS	66	5	93%	61	8	88%	73	3	96%
Non-matriculated	000							0	1	0%
Total Undergraduate		126	18	88%	126	14	90%	137	9	94%
Midwifery Certificate	MWIC	0	1	0%	0	1	0%	1	0	100%
Midwifery Direct Entry CAS	MWDC	0	1	0%	0	1	0%			
Midwifery- RN	965									
Midwifery- Direct Entry MS	MWDM	2	1	67%	1	1	50%	0	1	0%
Midwifery-RN MS	MWRM				0	1	0%			
Midwifery (MS completion)	MWCM	0	3	0%						
Midwifery	MWIF	6	10	38%	4	16	20%	9	17	35%
Occupational Therapy	OTMS	64	26	71%	64	32	67%	66	35	65%
Physical Therapy (BS and BS/MS)	PTMS	3	0	100%						
Medical Informatics	MIMS	13	18	42%	19	19	50%	21	24	47%
Doctor of Physical Therapy	DPT	37	1	97%	40	2	95%	40	2	95%
Non-matriculated	999									
Total Graduate		125	61	67%	128	73	64%	137	79	63%
Total		251	79	76%	254	87	74%	274	88	76%
Change from previous year				6%			-2%			

College of Health Related Professions
Enrollment by Gender
Fall 2006 to Fall 2010

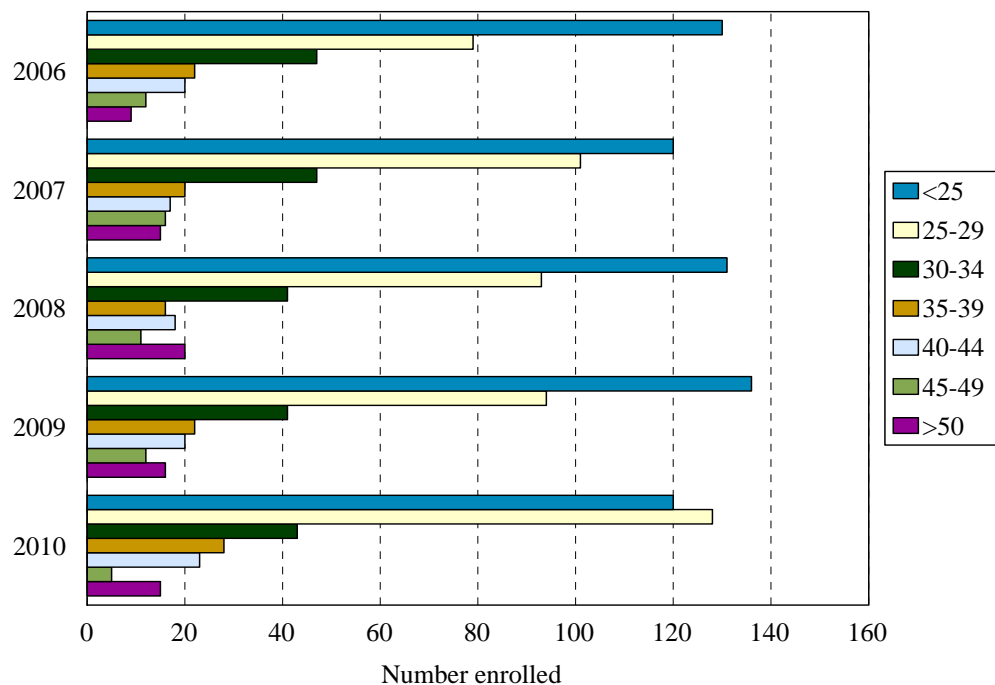


Gender	Year				
	2006	2007	2008	2009	2010
Female	236	246	250	265	277
Male	83	90	80	76	85
% Female	74%	73%	76%	78%	77%
Total	319	336	330	341	362

ENROLLMENT BY GENDER
COLLEGE OF HEALTH RELATED PROFESSIONS

Award	Program	Code	2006		2007		2008		2009		2010	
			F	M	F	M	F	M	F	M	F	M
BS	Diagnostic Medical Imaging	DIMI	46	4	44	7	45	7	42	6	42	5
BS	Physical Therapy: BS	294										
BS	Physical Therapy: BS/MS	PTBS	8	9	13	13	14	7	16	7	10	12
BS	Physician's Assistant	PABS	55	20	48	18	48	23	52	17	59	17
	Non-matriculated	000			1	0					0	1
	Total Undergraduate		120	42	106	38	107	37	110	30	111	35
CAS	Midwifery- Direct Entry	MWDC					1	0	1	0		
CAS	Midwifery- RN	MWIC	3	0			1	0	1	0	1	0
MS	Medical Informatics	MIMS	12	23	17	25	18	13	21	17	23	22
MS	Midwifery- Direct Entry	MWDM	4	0			3	0	2	0	1	0
MS	Midwifery-RN MS	MWRM	7	0					1	0		
MS	Midwifery (MS completion)	MWCM	2	0			3	0				
MS	Midwifery	MWIF			17	0	16	0	20	0	26	0
MS	Occupational Therapy	OTMS	72	12	83	11	80	10	86	10	90	11
MS	Physical Therapy (BS/MS)	PTMS	9	6	8	7	0	3				
DPT	Doctor of Physical Therapy	DPT			9	7	21	17	23	19	25	17
	Non-matriculated	999	7	0	3	2						
	Total Graduate		116	41	140	52	143	43	155	46	166	50
	Total		236	83	246	90	250	80	265	76	277	85
	Change from previous year		7%	12%	4%	8%	2%	-11%	8%	7%	5%	12%

Total Enrollment by Age Level Fall 2006 to Fall 2010

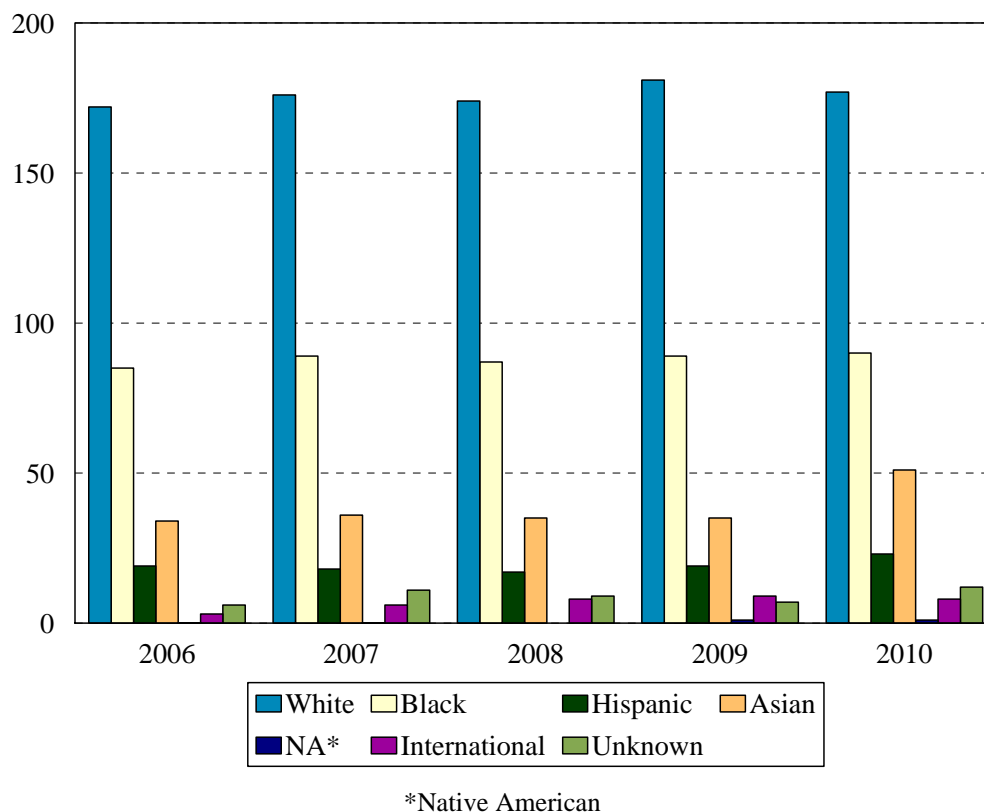


Age	Year									
	2006		2007		2008		2009		2010	
	N	%	N	%	N	%	N	%	N	%
Under 25	130	41%	120	36%	131	40%	136	40%	120	33%
25-29	79	25%	101	30%	93	28%	94	28%	128	35%
30-34	47	15%	47	14%	41	12%	41	12%	43	12%
35-39	22	7%	20	6%	16	5%	22	6%	28	8%
40-44	20	6%	17	5%	18	5%	20	6%	23	6%
45-49	12	4%	16	5%	11	3%	12	4%	5	1%
50 and over	9	3%	15	4%	20	6%	16	5%	15	4%
Median age	26		26		26		26		26	
Age range	19-64		19-64		20-59		19-60		19-62	
Total	319		336		330		341		362	

MEDIAN AGE BY PROGRAM
COLLEGE OF HEALTH RELATED PROFESSIONS

Award	Program	Code	Median Age				
			2006	2007	2008	2009	2010
BS	Diagnostic Medical Imaging	DIMI	26.0	28.0	26.5	26.5	
BS	Physical Therapy: BS	294					
BS/MS	Physical Therapy: BS/MS	PTBS	23.0	24.0	26.0	23.0	
BS	Physician's Assistant	PABS	25.0	25.0	23.0	26.0	
	Non-matriculated	000		34.0			
	Total Undergraduate		26.0	25.5	25.5	25.0	
CAS	Midwifery- Direct Entry	MWDC			44.0	45.0	
CAS	Midwifery- RN	965	31.0				
CAS	Midwifery	MWIC		43.0	46.0	47.0	
MS	Medical Informatics	MIMS	32.0	33.0	34.0	35.0	
MS	Midwifery- Direct Entry	MWDM	29.5		29.0	37.5	
MS	Midwifery-RN MS	968	28.0			35.0	
MS	Midwifery (MS completion)	MWCM	40.5				
MS	Midwifery	MWIF		41.0	33.0	35.0	
MS	Occupational Therapy	OTMS	24.5		24.0	24.0	
MS	Physical Therapy (BS and BS/MS)	PTMS	24.0	25.0	31.0		
DPT	Doctor of Physical Therapy	DPT		26.0	25.0	25.5	
	Non-matriculated	999	46.0	36.0			
	Total Graduate		28.0	28.0	26.0	26.0	
	Total		26.0	26.5	26.0	26.0	
	Change from previous year		0	.5			

College of Health Related Professions
Enrollment by Ethnic Group
Fall 2006 to Fall 2010



Ethnic Group (IPEDS Categories)	Year									
	2006		2007		2008		2009		2010	
	N	%	N	%	N	%	N	%	N	%
White	172	54%	176	52%	174	53%	181	53%	177	49%
Black	85	27%	89	26%	87	26%	89	26%	90	25%
Hispanic	19	6%	18	5%	17	5%	19	6%	23	6%
Asian/Pacific Islander	34	11%	36	11%	35	11%	35	10%	51	14%
Native American	0	0%	0	0%	0	0%	1	0%	1	0%
International	3	1%	6	2%	8	2%	9	3%	8	2%
Unknown	6	2%	11	3%	9	3%	7	2%	12	3%
% Black and Hispanic		33%		32%		32%		32%		31%
Total	319		336		330		341		362	

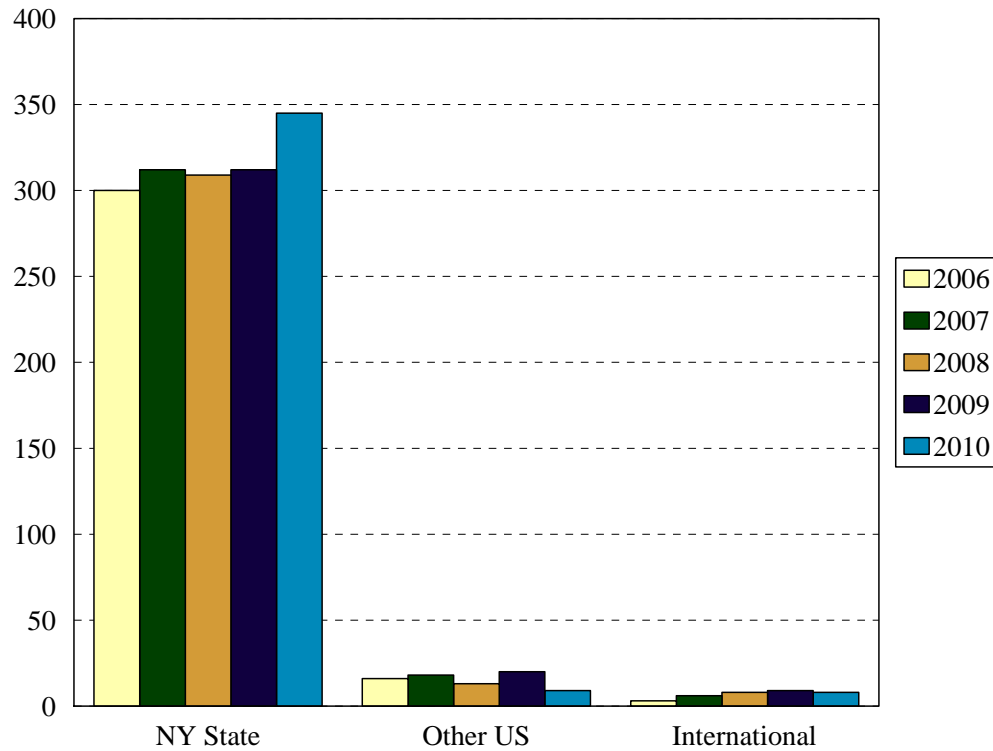
- The Integrated Postsecondary Education Data Set (IPEDS) ethnic categories are those used by the U.S. Department of Education.

ENROLLMENT BY ETHNIC GROUP BY PROGRAM
COLLEGE OF HEALTH RELATED PROFESSIONS

Program		2006							2007						
		White	Black	Hispanic	Asian	NA	Inter.	Unknown	White	Black	Hispanic	Asian	NA	Inter.	Unknown
Diagnostic Medical Imaging BS	DIMI	27	6	4	7	0	1	5	32	8	3	3	0	1	4
Physical Therapy BS	294														
Physical Therapy BS/MS	PTBS	10	3	2	2	0	0	0	14	5	1	5	0	0	1
Physician's Assistant BS	PABS	33	28	2	11	0	1	0	26	22	4	12	0	1	1
Non-matriculated	000								1	0	0	0	0	0	0
Total Undergraduate		86	39	9	21	0	2	5	73	35	8	20	0	2	6
Midwifery- Direct Entry CAS	MWDC														
Midwifery- RN CAS	965	1	2	0	0	0	0	0							
Midwifery (CAS)	MWIC								0	2	1	0	0	0	0
Medical Informatics	MIMS	5	24	0	5	0	1	0	5	28	0	5	0	3	1
Midwifery- Direct Entry MS	MWDM	2	1	0	1	0	0	0							
Midwifery-RN MS	968	3	3	1	0	0	0	0							
Midwifery (MS completion)	MWCM	1	1	0	0	0	0	0							
Midwifery	MWIF								9	3	2	2	0	0	1
Occupational Therapy MS	OTMS	61	11	4	7	0	0	1	64	14	5	8	0	1	2
Physical Therapy (BS & BS/MS)	PTMS	11	2	2	0	0	0	0	10	2	2	1	0	0	0
Doctor of Physical Therapy	DPT								14	2	0	0	0	0	0
Non-matriculated	999	2	2	3	0	0	0	0	1	3	0	0	0	0	1
Total Graduate		86	46	10	13	0	1	1	103	54	10	16	0	4	5
Total		172	85	19	34	0	3	6	176	89	18	36	0	6	11

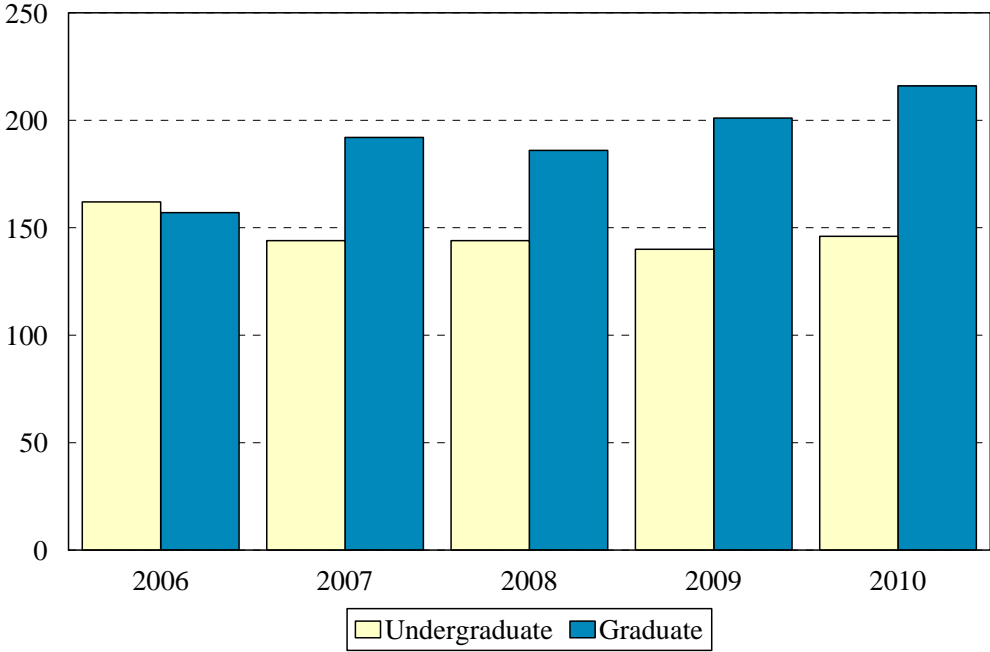
	2008							2009							2010						
	White	Black	Hispanic	Asian	NA	Inter.	Unknown	White	Black	Hispanic	Asian	NA	Inter.	Unknown	White	Black	Hispanic	Asian	NA	Inter.	Unknown
DIMI	34	9	1	4	0	1	3	26	12	2	6	0	1	1	19	11	5	9	0	2	1
294																					
PTBS	11	6	0	1	0	2	1	15	2	1	2	1	1	1	13	4	0	5	0	0	0
PABS	23	30	6	9	0	1	2	29	26	5	8	0	0	1	33	22	3	16	0	0	2
000															0	0	0	0	0	1	0
Total Undergrad	68	45	7	14	0	4	6	70	40	8	16	1	2	3	65	37	8	30	0	3	3
MWDC	0	0	1	0	0	0	0	0	0	1	0	0	0	0							
965																					
MWIC	0	1	0	0	0	0	0	0	1	0	0	0	0	0	0	1	0	0	0	0	0
MIMS	4	19	0	6	0	2	0	5	21	1	8	0	3	0	8	26	2	6	0	1	2
MWDM	0	1	0	1	0	0	1	0	1	0	0	0	0	1	0	0	0	0	0	0	1
MWRM								1	0	0	0	0	0	0							
MWCM	3	0	0	0	0	0	0														
MWIF	9	4	2	0	0	1	0	12	6	1	0	0	1	0	13	10	1	1	0	1	0
OTMS	62	10	6	9	0	1	2	69	10	7	7	0	1	2	66	8	11	12	0	1	3
PTMS	1	1	0	1	0	0	0														
DPT	27	6	1	4	0	0	0	24	10	1	4	0	2	1	25	8	1	2	1	3	2
999																					
Total Graduates	106	42	10	21	0	4	3	111	49	11	19	0	7	4	112	53	15	21	1	6	8
Total	174	87	17	35	0	8	9	181	89	19	35	1	9	7	177	90	23	51	1	9	11

College of Health Related Professions
Enrollment by Permanent Residence
Fall 2006 to Fall 2010



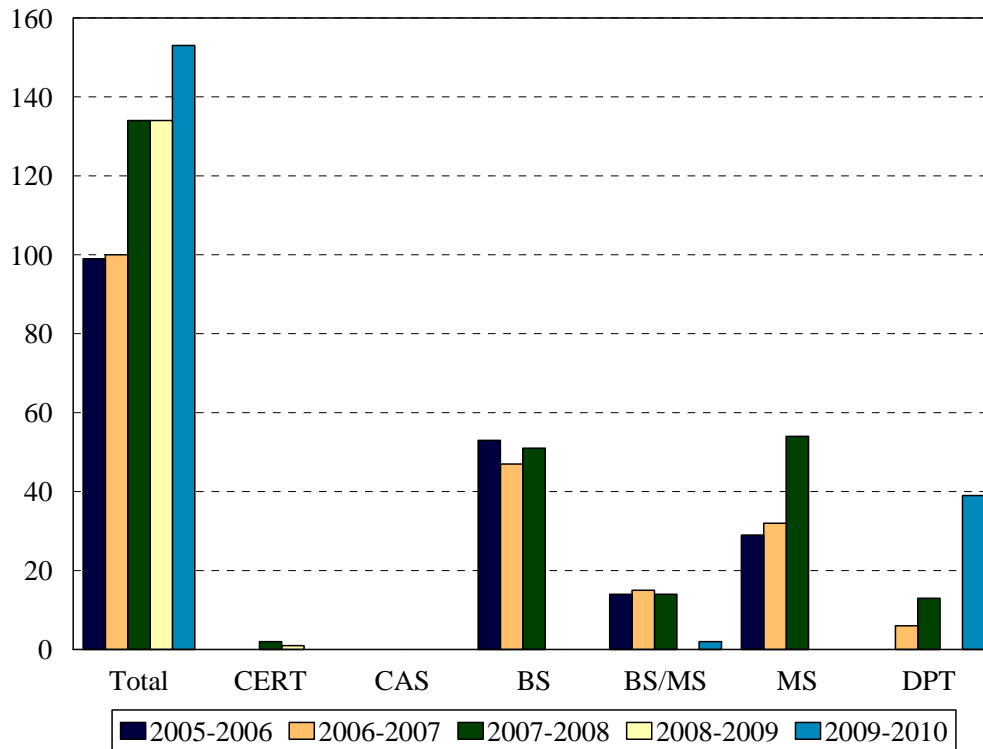
Residency	Year									
	2006		2007		2008		2009		2010	
	N	% of total	N	% of total	N	% of total	N	% of total	N	% of total
New York State	300	94%	312	93%	309	94%	312	91%	345	95%
New York City	264	83%	272	81%	273	83%	258	76%	285	79%
Bronx	11	3%	12	4%	9	3%	11	3%	13	4%
Kings (Brooklyn)	171	54%	174	52%	171	52%	167	49%	178	49%
Manhattan	20	6%	25	7%	23	7%	18	5%	23	6%
Queens	51	16%	53	16%	60	18%	50	15%	55	15%
Richmond (Staten I.)	11	3%	8	2%	10	3%	12	4%	16	4%
Other U.S.	16	5%	18	5%	13	4%	20	6%	9	2%
International	3	1%	6	2%	8	2%	9	3%	8	2%
Total	319		336		330		341		362	

College of Health Related Professions
 Enrollment by Student Level
 Fall 2006 to Fall 2010



Student Level	Year									
	2006		2007		2008		2009		2010	
	N	%	N	%	N	%	N	%	N	%
Undergraduate	162	51%	144	43%	144	44%	140	41%	146	40%
Graduate	157	49%	192	57%	186	56%	201	59%	216	60%
Total	319		336		330		341		362	

College of Health Related Professions
Degrees Granted by Level
2005-2006 to 2009-2010



Degrees	Code	Year				
		2005-06	2006-07	2007-08	2008-09	2009-10
Diagnostic Medical Imaging BS	DIMI	21	18	20	25	23
Physical Therapy BS	PTBS	0	0			
Physical Therapy BS/MS	PTMS	14	15	14	17	2
Physician's Assistant BS	PABS	32	29	31	28	29
Midwifery CERT	MWIC			1		
Nurse Midwifery CERT	MWNC			1	1	
Midwifery Direct Entry CERT	MWDC					
Midwifery- RN CAS	965					
Midwifery MS	MWIF			2	3	2
Midwifery Direct Entry MS	MWDM	4	4		2	10
Midwifery- RN MS	MWRM	0	2	1	2	
Midwifery: MS Completion	MWCM	0	1		4	
Occupational Therapy MS	OTMS	20	22	32	25	28
Medical Informatics	MIMS			19	12	20
Doctor of Physical Therapy	DPT	5	6	13	15	39
Total		96	100	134	134	153
Change from previous year		17%	4%	34%	0%	14%

DEGREES EARNED BY ETHNIC GROUP
COLLEGE OF HEALTH RELATED PROFESSIONS

Ethnic Group	Year				
	2005-06	2006-07	2007-08	2008-09	2009-10
White	52	68	71	79	81
% change	-2%	31%	4%	11%	53%
Black	30	17	35	33	41
% change	67%	-43%	106%	-6%	27%
Hispanic	6	6	9	4	5
% change	0%	0%	50%	-56%	3%
Asian	5	8	13	15	23
% change	67%	60%	63%	15%	15%
Native American	0	0	0	0	0
% change					0%
International	0	0	0	0	2
% change	-100%				1%
Unknown	3	1	6	3	1
% change		-67%	500%	-50%	1%
Total	96	100	134	134	154
Change from previous year	17%	4%	34%	0%	14%