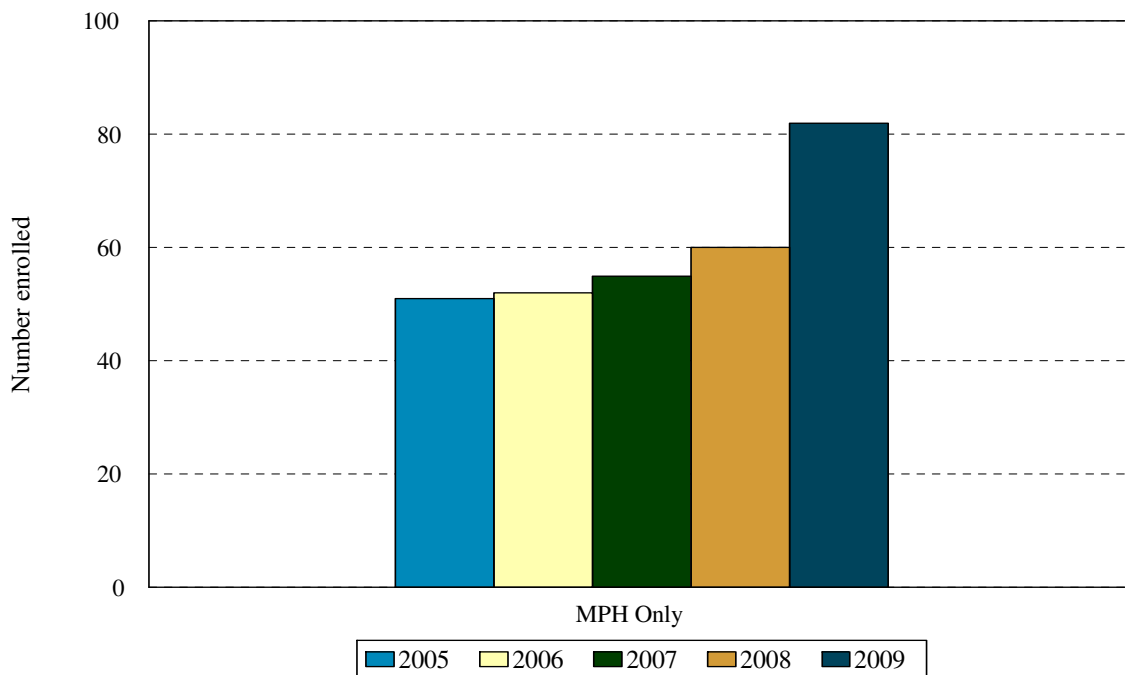


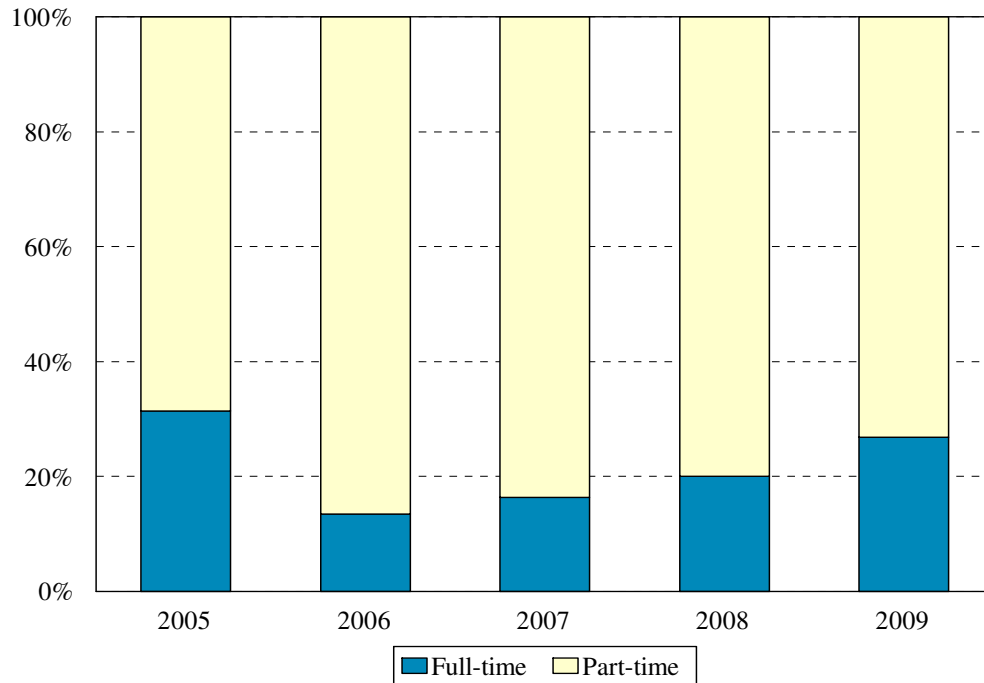
School of Public Health Fall 2005 to Fall 2009



School of Public Health	Year				
	2005	2006	2007	2008	2009
New students	38	31	39	36	56
Continuing students	13	21	16	24	26
Total	51	52	55	60	82
Change from previous year	-9%	2%	6%	8%	37%

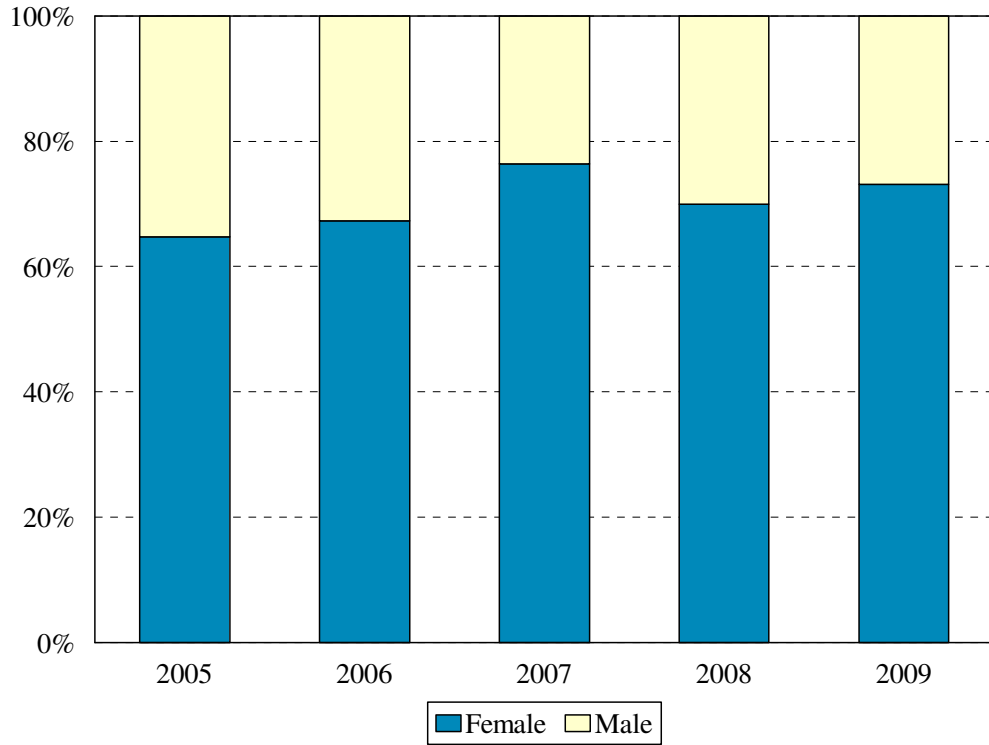
The totals do **not** include students concurrently enrolled in the MD/MPH Programs: 16 in 2004, 17 in 2005, 17 in 2006, 31 in 2007 and 27 in 2008 and 24 in 2009.

School of Public Health
Enrollment by Full- and Part-time Status
 Fall 2005 to Fall 2009



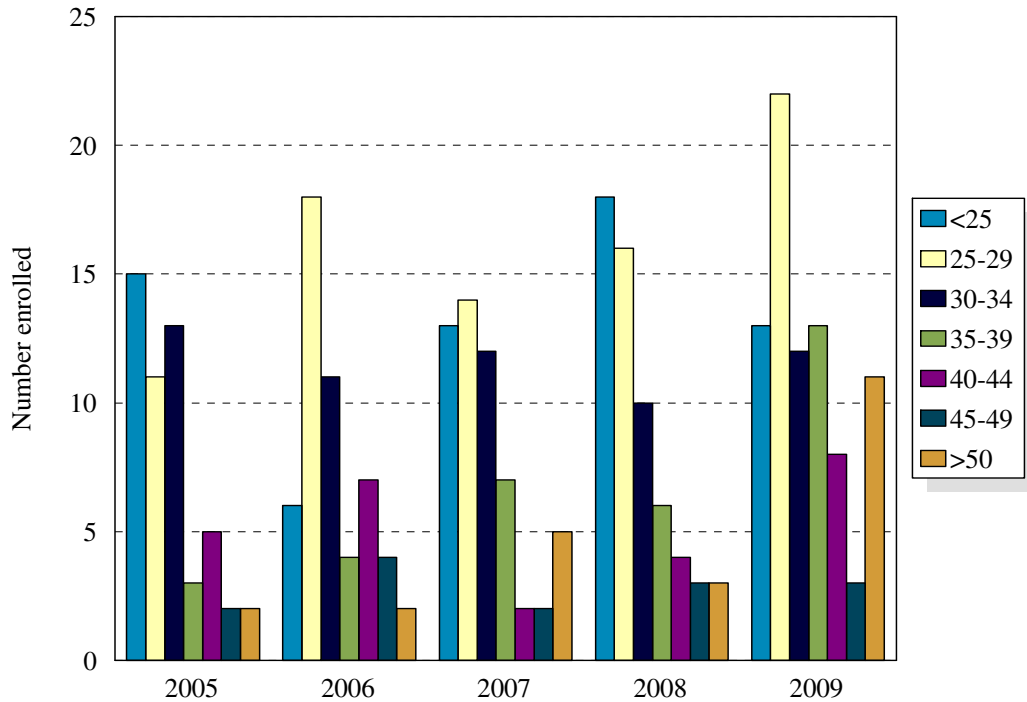
Enrollment Levels	Year				
	2005	2006	2007	2008	2009
Full-time	16	7	9	12	22
Part-time	35	45	46	48	60
% Full-time	31%	13%	16%	20%	27%
Total	51	52	55	60	82

School of Public Health Enrollment by Gender Fall 2005 to Fall 2009



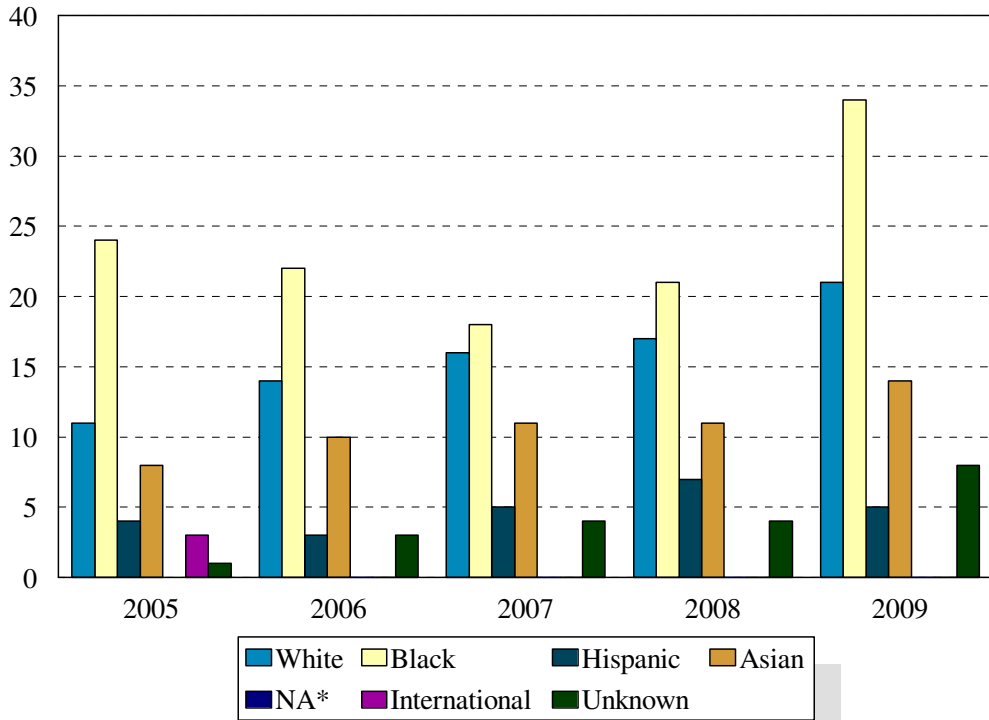
Gender	Year			Year			Year			Year			Year		
	2005			2006			2007			2008			2009		
	F	M	%F	F	M	%F	F	M	%F	F	M	%F	F	M	%F
Total	33	18	65%	35	17	67%	42	13	76%	42	18	70%	60	22	73%
Change from previous year			2%			3%			9%			-8%			3%

School of Public Health Enrollment by Age Level Fall 2005 to Fall 2009



Age	Year									
	2005		2006		2007		2008		2009	
	N	%	N	%	N	%	N	%		
Under 25	15	29%	6	12%	13	24%	18	30%	13	16%
25-29	11	22%	18	35%	14	25%	16	27%	22	27%
30-34	13	25%	11	21%	12	22%	10	17%	12	15%
35-39	3	6%	4	8%	7	13%	6	10%	13	16%
40-44	5	10%	7	13%	2	4%	4	7%	8	10%
45-49	2	4%	4	8%	2	4%	3	5%	3	4%
50 and over	2	4%	2	4%	5	9%	3	5%	11	13%
Median age	31		30		30		29		32	
Age range	21-54		21-55		22-60		22-61		22-62	
Total	51		52		55		60		82	

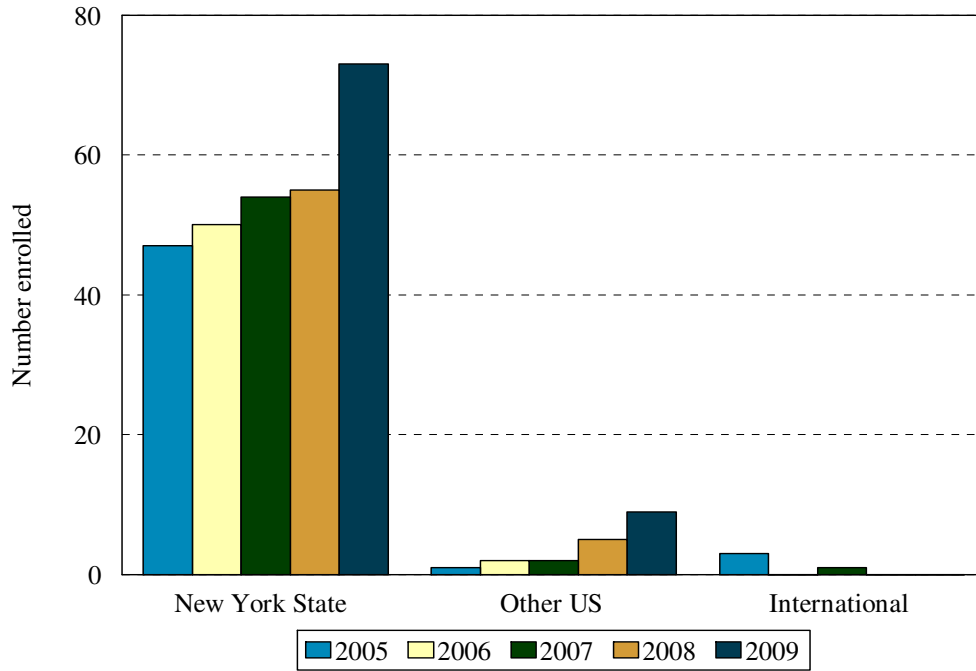
**School of Public Health
Enrollment by Ethnic Group
Fall 2005 to Fall 2009**



Ethnic Group (IPEDS Categories)	Year									
	2005		2006		2007		2008		2009	
	N	%	N	%	N	%	N	%	N	%
White	11	22%	14	27%	16	29%	17	31%	21	26%
Black	24	47%	22	42%	18	33%	21	38%	34	41%
Hispanic	4	8%	3	6%	5	9%	7	13%	5	6%
Asian/Pacific Islander	8	16%	10	19%	11	20%	11	20%	14	17%
Native American	0	0%	0	0%	0	0%	0	0%	0	0%
International	3	6%	0	0%	0	0%	0	0%	0	0%
Unknown	1	2%	3	6%	4	7%	4	7%	8	10%
<i>Black and Hispanic</i>	28	55%	25	48%	23	42%	28	51%	39	48%
Total	51		52		55		60		82	

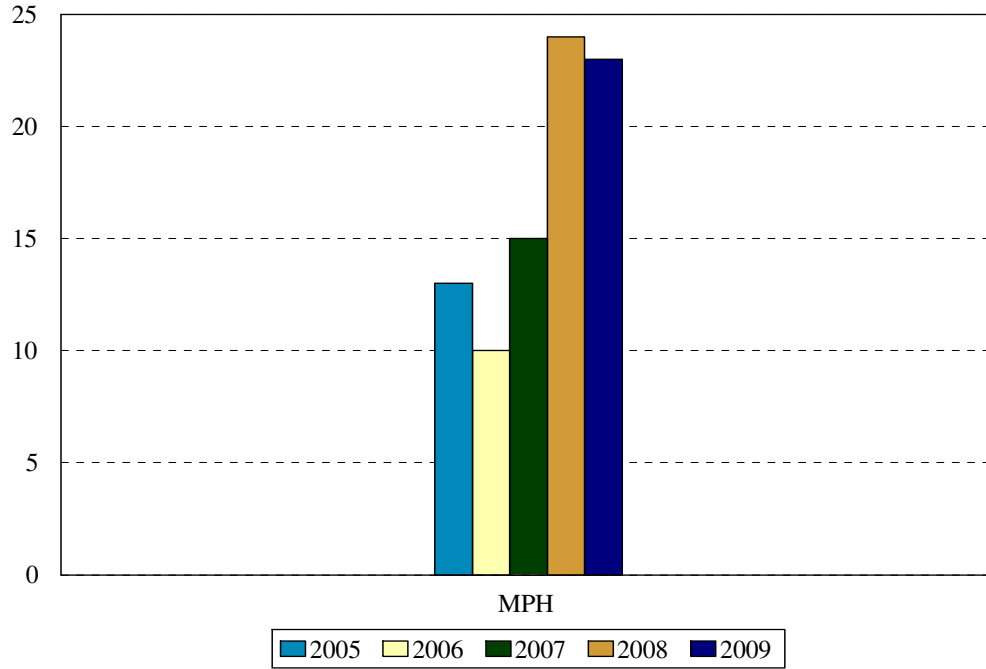
- The Integrated Postsecondary Education Data Set (IPEDS) ethnic categories are those used by the U.S. Department of Education.

School of Public Health
Enrollment by Permanent Residence
 Fall 2005 to Fall 2009



Residency	Year									
	2005		2006		2007		2008		2009	
	N	% of total	N	% of total	N	% of total	N	% of total	N	% of total
New York State	47	92%	50	96%	54	98%	55	92%	73	89%
New York City	40	78%	39	75%	42	76%	44	73%	52	63%
Bronx	1	2%	1	2%	2	4%	1	2%	0	0%
Kings (Brooklyn)	28	55%	28	54%	25	45%	27	45%	38	46%
Manhattan	5	10%	3	6%	2	4%	4	7%	6	7%
Queens	5	10%	5	10%	8	15%	9	15%	7	9%
Richmond (Staten I.)	1	2%	2	4%	3	5%	3	5%	1	1%
Other U.S.	1	2%	2	4%	2	4%	5	8%	9	11%
International	3	6%			1	2%	0	0%	0	0%
Total	51		52		55		60		82	

School of Public Health
Degrees Granted by Level
 Fiscal Years 2004-2005 to 2008-2009



Degree Level	Year				
	2004-2005	2005-2006	2006-2007	2007-2008	2008-2009
MPH	13	10	15	24	23
Change from previous year		-23%	50%	47%	-4%

School of Public Health
DEGREES EARNED BY ETHNIC GROUP

Ethnic Group	Year				
	2004-2005	2005-2006	2006-2007	2007-2008	2008-2009
White	5	2	4	4	8
% change		-80%	100%	0%	100%
Black	4	4	8	9	5
% change		0%	100%	13%	-44%
Hispanic	0	2	1	0	1
% change			-50%	0%	
Asian	2	2	2	8	9
% change		0%	0%	300%	13%
Native American	0	0	0	0	0
% change		0%	0%	0%	0%
International	2	0	0	0	0
% change		-100%	0%	0%	0%
Unknown	0	0	0	1	0
% change		0%	0%		-100%
Total	13	10	15	22	23
Change from previous year		-23%	50%	47%	5%