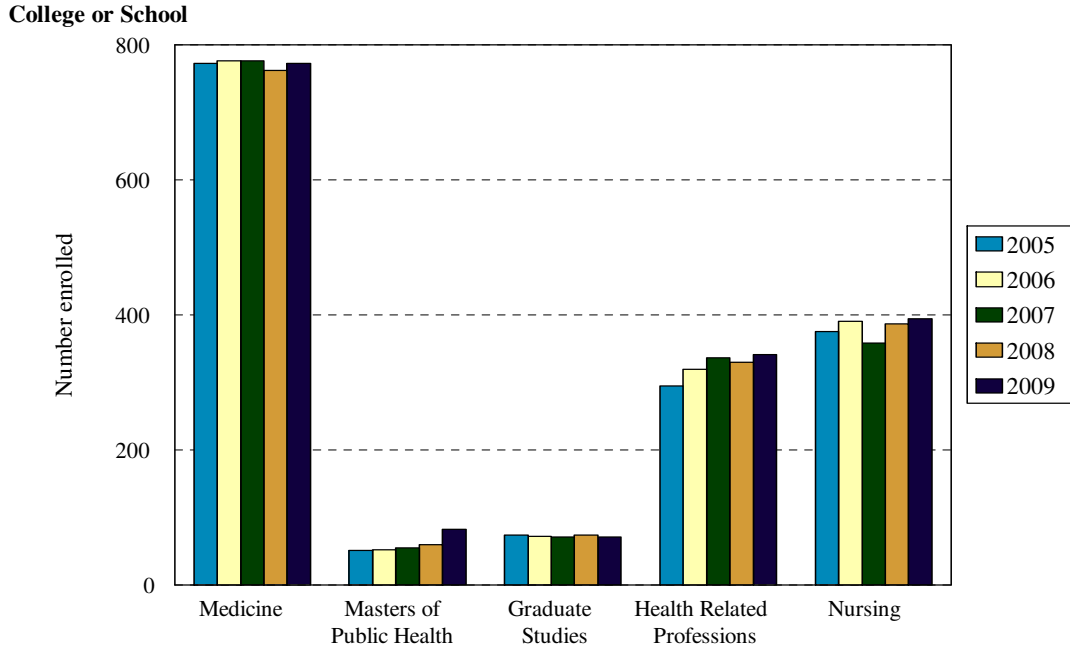


Total Enrollment Fall 2005 to Fall 2009

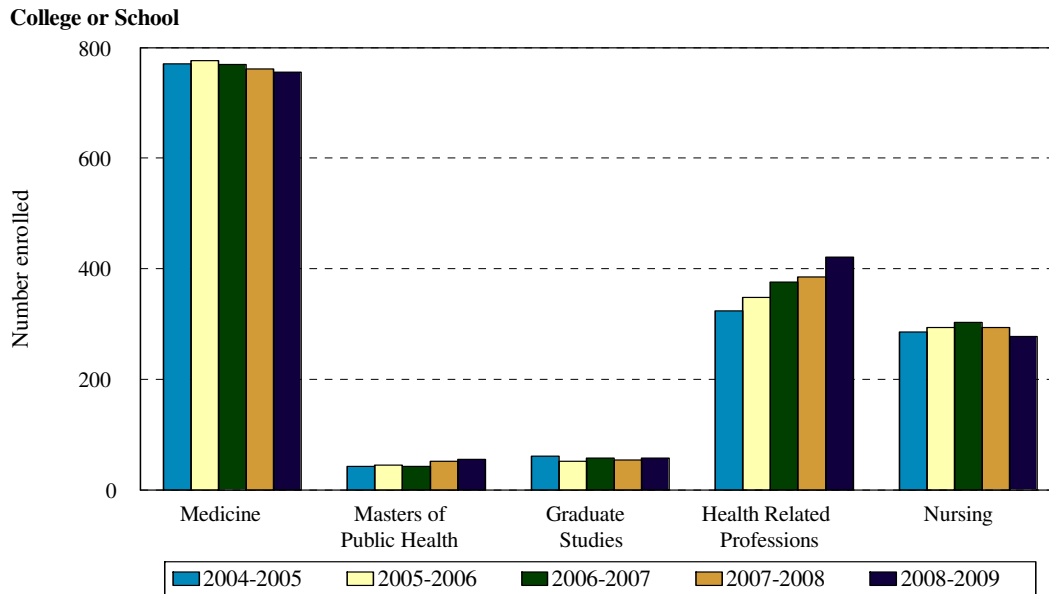


| School | Year | | | | |
|----------------------------|--------------|--------------|--------------|--------------|--------------|
| | 2005 | 2006 | 2007 | 2008 | 2009 |
| Medicine | 772 | 776 | 776 | 762 | 772 |
| Change from previous year | -1% | 1% | 0% | -2% | 1% |
| Public Health | 51 | 52 | 55 | 60 | 82 |
| Change from previous year | -9% | 2% | 6% | 8% | 37% |
| Graduate Studies | 74 | 72 | 71 | 74 | 71 |
| Change from previous year | 1% | -3% | -1% | 4% | -4% |
| Health Related Professions | 295 | 319 | 336 | 330 | 341 |
| Change from previous year | 7% | 8% | 5% | -2% | 3% |
| Nursing | 375 | 390 | 358 | 387 | 394 |
| Change from previous year | -3% | 4% | -8% | 7% | 2% |
| Total | 1,567 | 1,609 | 1,598 | 1,613 | 1,660 |
| Change from previous year | <1% | 3% | -1% | 1% | 3% |

| School | Year | | | | | | | | | |
|------------------|--------------|--------------|--------------|-------------|--------------|-------------|--------------|-------------|--------------|-------------|
| | 2005 | | 2006 | | 2007 | | 2008 | | 2009 | |
| | N | % of total | N | % of total | N | N | N | % of total | N | % of total |
| Medicine | 776 | 776 | 776 | 48% | 776 | 49% | 762 | 47% | 772 | 47% |
| Public Health | 55 | 55 | 52 | 3% | 55 | 3% | 60 | 4% | 82 | 5% |
| Graduate Studies | 71 | 71 | 72 | 4% | 71 | 4% | 74 | 5% | 71 | 4% |
| CHRP | 336 | 336 | 319 | 20% | 336 | 21% | 330 | 20% | 341 | 21% |
| Nursing | 358 | 358 | 390 | 24% | 358 | 22% | 387 | 24% | 394 | 24% |
| Total | 1,598 | 1,598 | 1,609 | 100% | 1,598 | 100% | 1,613 | 100% | 1,660 | 100% |

College of Medicine totals reflect a planned reduction in entering class size beginning in 1997 and a planned increase in 2000. In 2002, the MPH program was added under the College of Medicine, but is described separately.

Total Full Time Equivalents (FTE) Academic Years 2003-2004 to 2007-2008

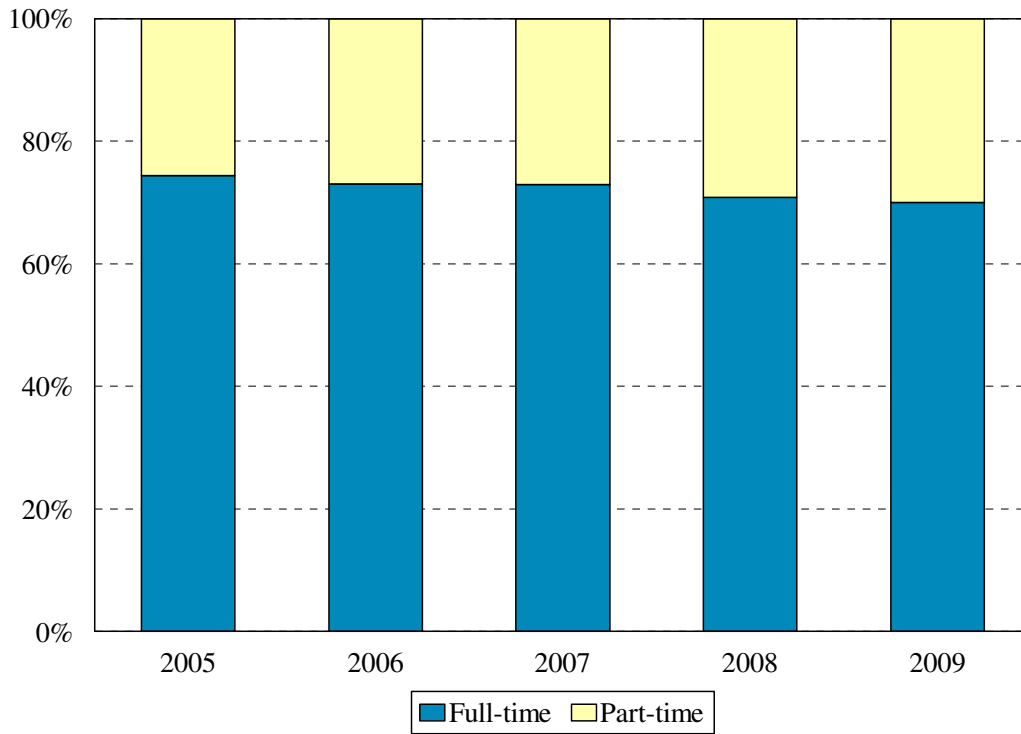


| School | Year | | | | |
|----------------------------|----------------|----------------|----------------|----------------|----------------|
| | 2004-2005 | 2005-2006 | 2006-2007 | 2007-2008 | 2008-2009 |
| Medicine | 770.5 | 776.00 | 769 | 761.5 | 756 |
| Change from previous year | 0% | 1% | -1% | -1% | -1% |
| Public Health | 42.58 | 44.75 | 42.5 | 51.54 | 54.63 |
| Change from previous year | 65% | 5% | -5% | 21% | 6% |
| Graduate Studies | 60.67 | 51.63 | 57.71 | 54.42 | 57.21 |
| Change from previous year | -10% | -15% | 12% | -6% | 5% |
| Health Related Professions | 324.15 | 348.00 | 376 | 384.74 | 420.42 |
| Change from previous year | 12% | 17% | 8% | 2% | 9% |
| Nursing | 285.37 | 294.17 | 303.18 | 293.63 | 277.33 |
| Change from previous year | 2% | 3% | 3% | -3% | -6% |
| Total | 1483.27 | 1504.54 | 1548.39 | 1545.83 | 1565.58 |
| Change from previous year | 8% | 4% | 1% | 3% | 1% |

| School | Year | | | | | | | | | |
|------------------|----------------|------------|----------------|------------|----------------|------------|----------------|------------|----------------|------------|
| | 2004-2005 | | 2005-2006 | | 2006-2007 | | 2007-2008 | | 2008-2009 | |
| | FTE | % of total | FTE | % of total | FTE | % of total | FTE | % of total | FTE | % of total |
| Medicine | 770.5 | 51.95% | 776.00 | 51.58% | 769.00 | 49.66% | 761.5 | 49.26% | 756 | 48% |
| Public Health | 42.58 | 2.87% | 44.75 | 2.97% | 42.50 | 2.74% | 51.54 | 3.33% | 54.63 | 3% |
| Graduate Studies | 60.67 | 4.09% | 51.63 | 3.43% | 57.71 | 3.73% | 54.42 | 3.52% | 57.21 | 4% |
| CHRP | 324.15 | 21.85% | 348.00 | 23.13% | 376.00 | 19.58% | 384.74 | 24.89% | 420.42 | 27% |
| Nursing | 285.37 | 19.24% | 294.17 | 19.55% | 303.18 | 24.28% | 293.63 | 18.99% | 277.33 | 18% |
| Total | 1483.27 | | 1504.54 | | 1548.39 | | 1545.83 | | 1565.58 | |

Full Time Equivalents (FTE) are computed as the sum over an academic year (summer, fall, and spring) of the following: 1) All undergraduate credits divided by 30, 2) all graduate credits with the exception of advanced Ph.D. and post-master's certificate students divided by 24, 3) medical student headcount for fall and spring divided by 2, and 4) full-time advanced Ph.D. and post master's certificate headcount plus .75 of the part-time advanced Ph.D. and post master's certificate headcount.

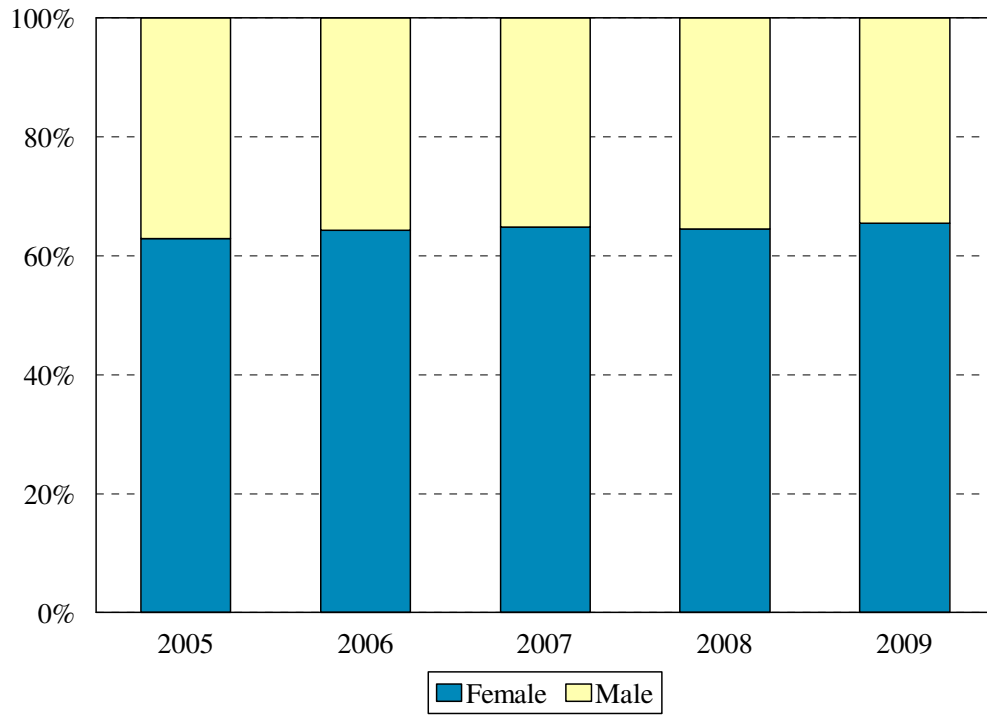
Total Enrollment by Full- and Part-time Status
Fall 2005 to Fall 2009



| Enrollment Levels | Year | | | | |
|-------------------|--------------|--------------|--------------|--------------|--------------|
| | 2005 | 2006 | 2007 | 2008 | 2009 |
| Full-time | 1,166 | 1,175 | 1,165 | 1,142 | 1,161 |
| Part-time | 401 | 434 | 433 | 471 | 499 |
| % Full-time | 74% | 73% | 73% | 71% | 70% |
| Total | 1,567 | 1,609 | 1,598 | 1,613 | 1,660 |

Total Enrollment by Gender

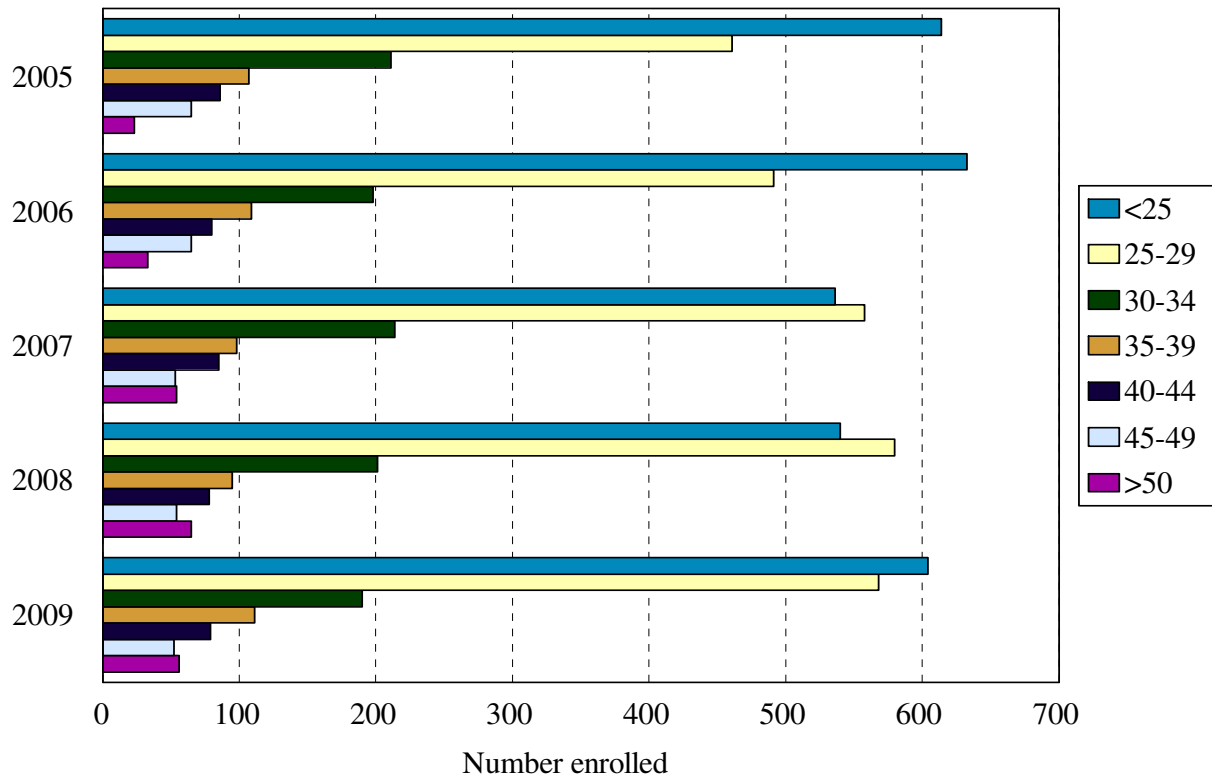
Fall 2005 to Fall 2009



| Gender | Year | | | | |
|--------------|--------------|--------------|--------------|--------------|-------------|
| | 2005 | 2006 | 2007 | 2008 | 2009 |
| Female | 985 | 1035 | 1035 | 1041 | 1086 |
| Male | 582 | 574 | 563 | 572 | 574 |
| % Female | 63% | 64% | 65% | 65% | 65% |
| Total | 1,567 | 1,609 | 1,598 | 1,613 | 1660 |

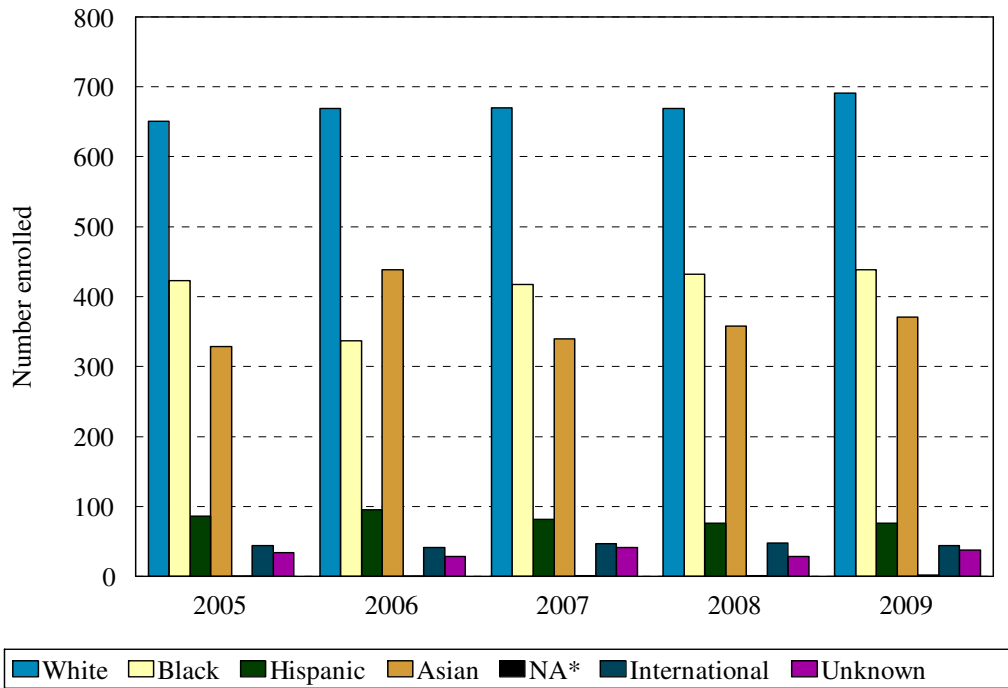
Total Enrollment by Age Level

Fall 2005 to Fall 2009



| Age | Year | | | | | | | | | |
|--------------|--------------|-----|--------------|-----|--------------|-----|--------------|-----|--------------|-----|
| | 2005 | | 2006 | | 2007 | | 2008 | | 2009 | |
| | N | % | N | % | N | % | N | % | N | % |
| Under 25 | 614 | 39% | 633 | 39% | 536 | 34% | 540 | 33% | 604 | 36% |
| 25-29 | 461 | 29% | 491 | 31% | 558 | 35% | 580 | 36% | 568 | 34% |
| 30-34 | 211 | 13% | 198 | 12% | 214 | 13% | 201 | 12% | 190 | 11% |
| 35-39 | 107 | 7% | 109 | 7% | 98 | 6% | 95 | 6% | 111 | 7% |
| 40-44 | 86 | 6% | 80 | 5% | 85 | 5% | 78 | 5% | 79 | 5% |
| 45-49 | 65 | 4% | 65 | 4% | 53 | 3% | 54 | 3% | 52 | 3% |
| 50 and over | 23 | 1% | 33 | 2% | 54 | 3% | 65 | 4% | 56 | 3% |
| Median Age | 26 | | 26 | | 26 | | 26 | | 26 | |
| Age Range | 19-63 | | 19-64 | | 19-64 | | 20-61 | | 19-62 | |
| Total | 1,567 | | 1,609 | | 1,598 | | 1,613 | | 1,660 | |

Total Enrollment by Ethnic Group Fall 2005 to Fall 2009

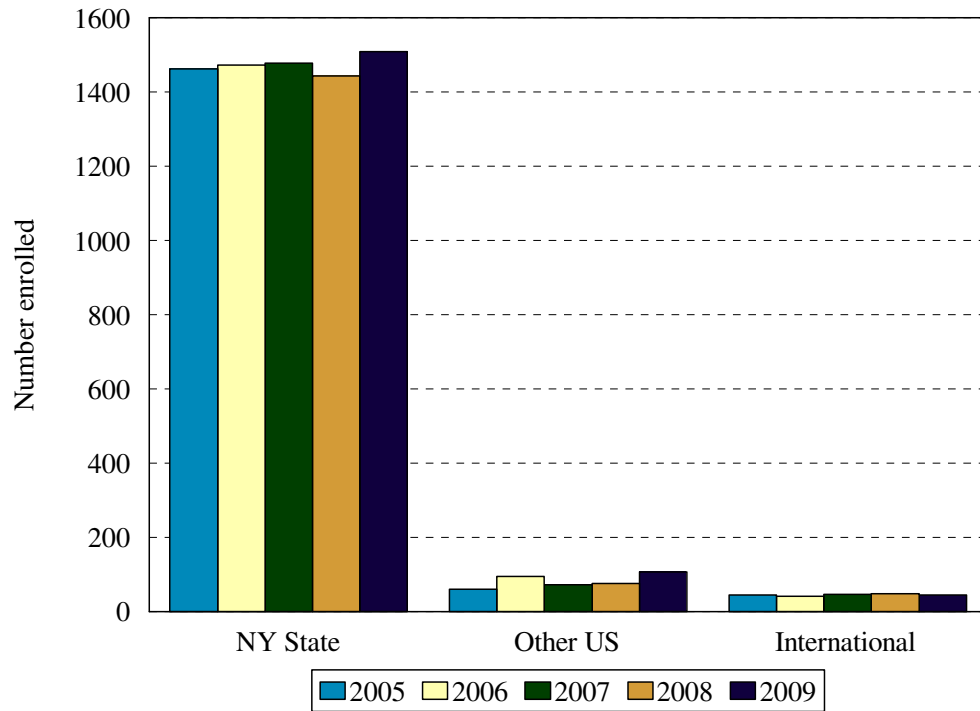


*Native American: 0 in 2003, 0 in 2004, 0 in 2005, 0 in 2006, and 1 in 2007.

| Ethnic Group (IPEDS Categories) | Year | | | | | | | | | |
|------------------------------------|--------------|-------------|--------------|-------------|--------------|-------------|--------------|-------------|--------------|-------------|
| | 2005 | | 2006 | | 2007 | | 2008 | | 2009 | |
| | N | % | N | % | N | % | N | % | N | % |
| White | 651 | 42% | 669 | 42% | 670 | 42% | 669 | 41% | 691 | 42% |
| Asian/Pacific Islander | 329 | 21% | 337 | 21% | 340 | 21% | 358 | 22% | 371 | 22% |
| Hispanic | 86 | 5% | 95 | 6% | 82 | 5% | 76 | 5% | 76 | 5% |
| Black | 423 | 27% | 438 | 27% | 417 | 26% | 432 | 27% | 438 | 26% |
| Native American | 0 | | 0 | 0% | 1 | <1% | 1 | <1% | 2 | <1% |
| International | 44 | 3% | 41 | 5% | 47 | 3% | 48 | 3% | 44 | 3% |
| Unknown | 34 | 2% | 29 | 2% | 41 | 3% | 29 | 2% | 38 | 2% |
| % Black and Hispanic | | 32% | | 33% | | 31% | | 32% | | 31% |
| Total | 1,567 | 100% | 1,609 | 100% | 1,598 | 100% | 1,613 | 100% | 1,660 | 100% |

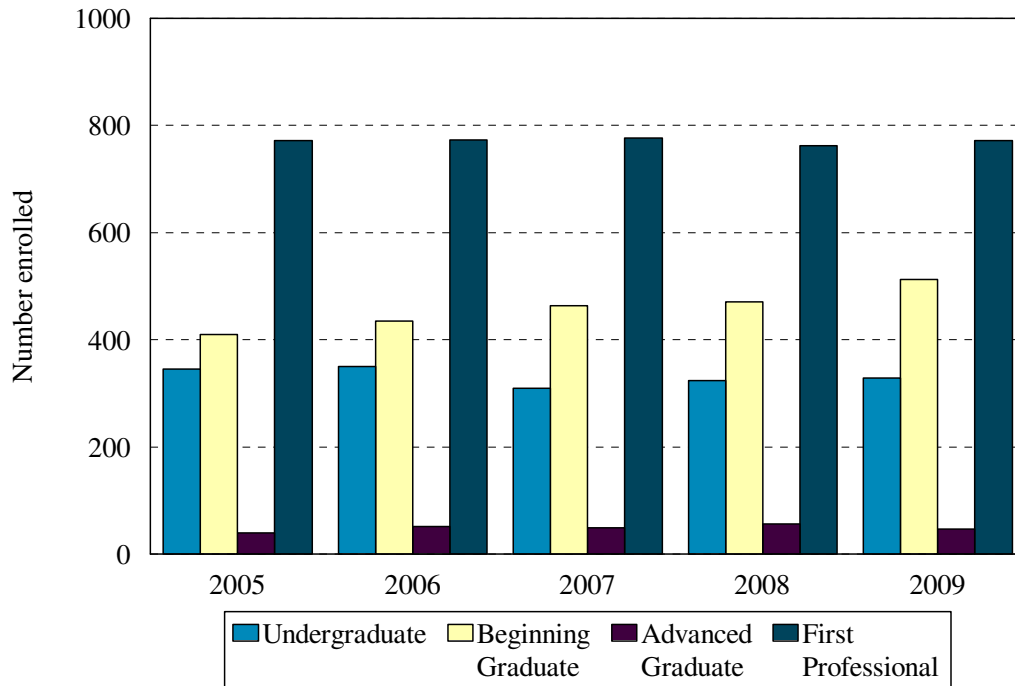
- The Integrated Postsecondary Education Data Set (IPEDS) ethnic categories are those used by the U.S. Department of Education.

Total Enrollment by Permanent Residence Fall 2005 to Fall 2009



| Residency | Year | | | | | | | | | |
|----------------------|--------------|-----|--------------|-----|--------------|-----|--------------|-----|--------------|-----|
| | 2005 | | 2006 | | 2007 | | 2008 | | 2009 | |
| | N | % | N | % | N | % | N | % | N | % |
| New York State | 1,463 | 93% | 1,473 | 92% | 1,479 | 93% | 1,444 | 90% | 1,509 | 91% |
| New York City | 1,100 | 70% | 1,129 | 70% | 1,118 | 70% | 1,105 | 69% | 1,157 | 70% |
| Bronx | 31 | 2% | 36 | 2% | 43 | 3% | 47 | 3% | 56 | 3% |
| Kings (Brooklyn) | 638 | 41% | 662 | 41% | 666 | 42% | 686 | 43% | 683 | 41% |
| Manhattan | 121 | 8% | 114 | 7% | 110 | 7% | 48 | 6% | 98 | 6% |
| Queens | 258 | 16% | 273 | 17% | 256 | 16% | 279 | 17% | 270 | 16% |
| Richmond (Staten I.) | 52 | 3% | 44 | 3% | 43 | 3% | 45 | 3% | 50 | 3% |
| Other U.S. | 60 | 4% | 95 | 6% | 72 | 5% | 75 | 5% | 107 | 6% |
| International | 44 | 3% | 41 | 3% | 47 | 3% | 48 | 3% | 44 | 3% |
| Total | 1,567 | | 1,609 | | 1,598 | | 1,613 | | 1,660 | |

Total Enrollment by Student Level Fall 2005 to Fall 2009

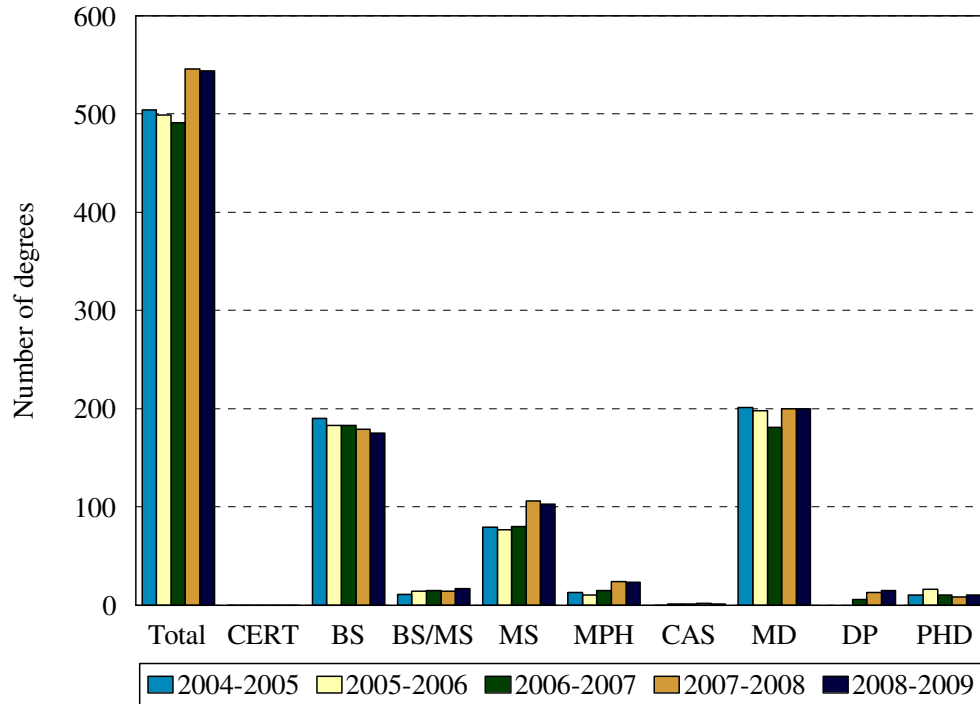


Note: Beginning Ph.D. and Advanced Certificate students have completed 0-23 graduate credits; advanced graduates have completed 24 or more. First professional students are medical students

| Student Level | Year | | | | | | | | | |
|--------------------|--------------|-------------|-------------|-------------|-------------|-------------|--------------|-------------|--------------|-------------|
| | 2005 | | 2006 | | 2007 | | 2008 | | 2009 | |
| | N | % | N | % | N | % | N | % | N | % |
| Undergraduate | 345 | 22% | 350 | 22% | 309 | 19% | 324 | 20% | 329 | 20% |
| Beginning Graduate | 410 | 26% | 435 | 27% | 464 | 29% | 471 | 29% | 512 | 31% |
| Advanced Graduate | 40 | 3% | 51 | 3% | 49 | 3% | 56 | 3% | 47 | 3% |
| First Professional | 772 | 49% | 773 | 48% | 776 | 49% | 762 | 47% | 772 | 47% |
| Total | 1,567 | 100% | 1609 | 100% | 1598 | 100% | 1,613 | 100% | 1,660 | 100% |

| Level | Year | | | | | | | | | |
|---------------|-----------|-----------|-----------|-----------|-----------|-----------|-----------|-----------|-----------|-----------|
| | 2005 | | 2006 | | 2007 | | 2008 | | 2009 | |
| | Full-time | Part-Time | Full-time | Part-Time | Full-time | Part-Time | Full-time | Part-Time | Full-time | Part-Time |
| Undergraduate | 203 | 142 | 212 | 138 | 196 | 113 | 184 | 131 | 187 | 142 |
| | 59% | 41% | 18% | 9% | 12% | 7% | 57% | 43% | 57% | 43% |
| Graduate | 963 | 259 | 963 | 296 | 969 | 320 | 967 | 321 | 974 | 357 |
| | 79% | 21% | 76% | 24% | 61% | 20% | 75% | 25% | 73% | 27% |

Total Degrees Granted by Level 2004-2005 to 2008-2009



Degrees granted during July1 (year 1)-June 30 (year 2) periods

| Degree Level | Year | | | | |
|-------------------------------|------------|------------|------------|------------|------------|
| | 2004-2005 | 2005-2006 | 2006-2007 | 2007-2008 | 2008-2009 |
| Certificate | 0 | 0 | 0 | 0 | 0 |
| Bachelor of Science | 190 | 183 | 183 | 179 | 175 |
| BS/MS* | 11 | 14 | 15 | 14 | 17 |
| Master of Science | 79 | 77 | 76 | 106 | 103 |
| Master of Public Health | 13 | 10 | 15 | 24 | 23 |
| Certificate of Advanced Study | 0 | 1 | 1 | 2 | 1 |
| Doctor of Medicine | 201 | 198 | 181 | 200 | 200 |
| Doctor of Physical Therapy | | | 6 | 13 | 15 |
| Doctor of Philosophy | 10 | 16 | 11 | 8 | 10 |
| Total | 504 | 499 | 488 | 546 | 544 |

* Combined BSMS in Physical Therapy.