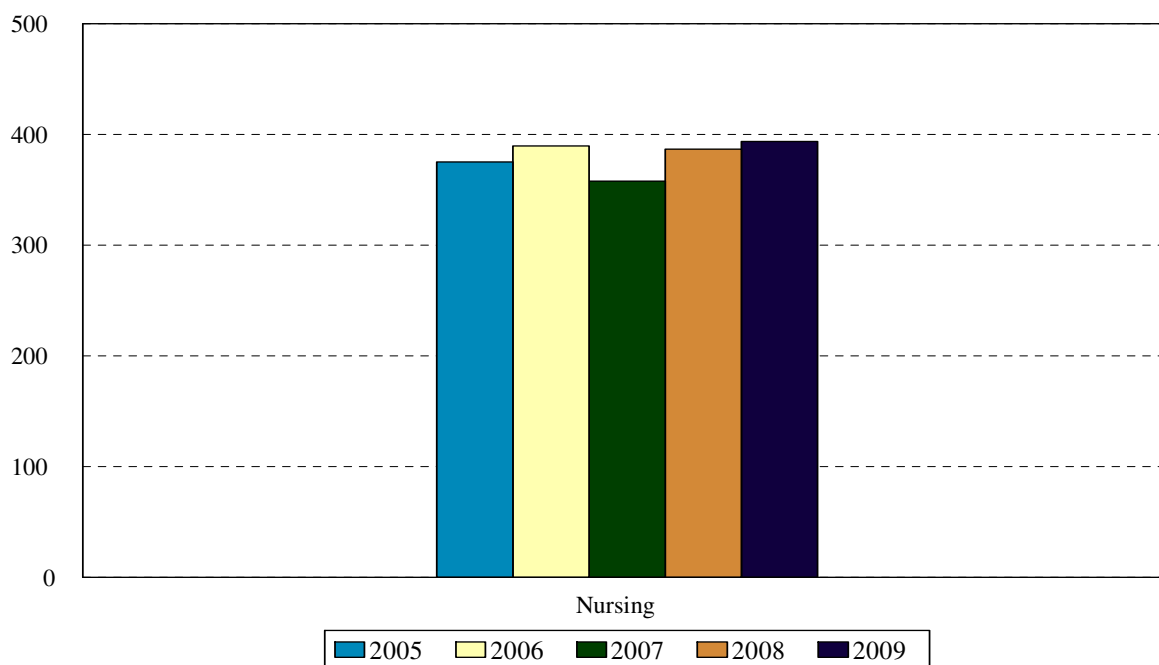


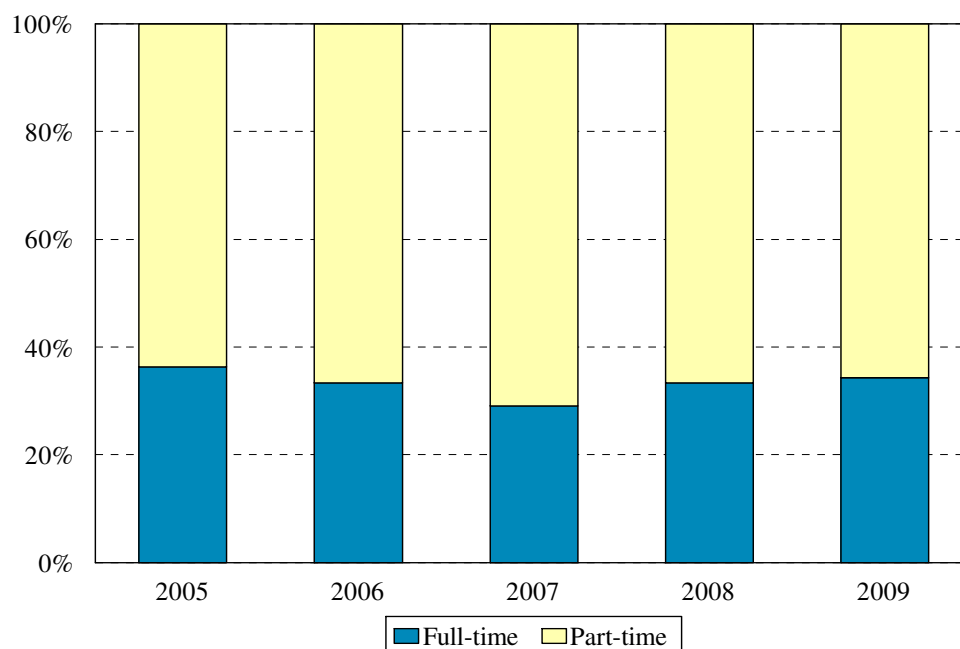
College of Nursing Enrollment Fall 2005 to Fall 2009



Award	Program	Code	Year				
			2005	2006	2007	2008	2009
BS	Accelerated Nursing	NACC	47	50	61	46	58
BS	RN Completion	RNBS	147	132	104	134	131
	Non-matriculated	000	2	6	0		
	Total Undergraduates		196	188	165	180	189
CAS	Family Nurse Practitioner	FNPC	2	3	1	3	2
CAS	Women's Nurse Practitioner	930					
MS	Clinical Nurse Specialist	CNSM			31	15	17
MS	Clinical Nurse Spec. Adult	CNSA	23	30		15	4
MS	Clinical Nurse Spec. HRMI	CNSH	2	6		2	
MS	Family Nurse Practitioner	FNPM	77	89	97	120	133
MS	Nurse Anesthesia: KCH	940	36	37			
MS	Nurse Anesthesia: Harlem	941	25	14			
MS	Nurse Anesthesia	NRAN			32	15	13
MS	Nurse Midwifery Completion	950					
MS	Nurse Midwifery	966	9	11			
MS	Nurse Midwifery	NRMS			17	15	17
MS	Women's Nurse Practitioner	WNPM	5	12	13	19	17
	Non-matriculated	999	0	0	2	3	2
	Total Graduate		179	202	193	207	205
	Total		375	390	358	387	394
	Change from previous year		-3%	4%	-8%	8%	2%

College of Nursing totals reflect the deactivation of the Generic Nursing program, beginning in 1997.

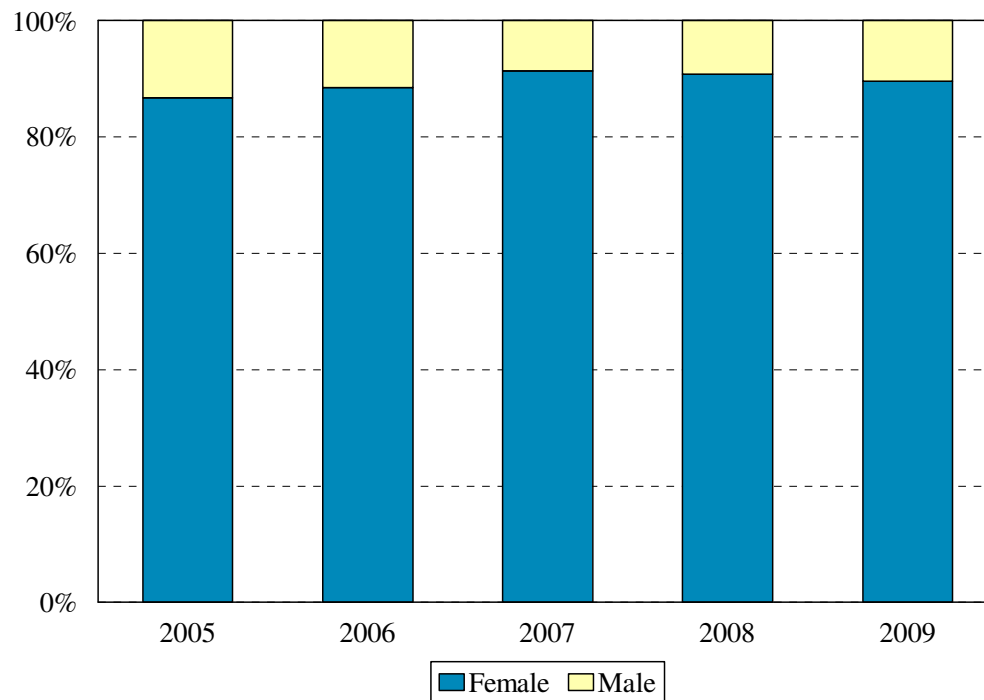
College of Nursing
Enrollment by Full- and Part-time Status
Fall 2005 to Fall 2009



Program	Code	Year								
		2005			2006			2007		
		FT	PT	%FT	FT	PT	%FT	FT	PT	%FT
Accelerated Nursing	NACC	46	1	98%	39	11	78%	55	6	90%
RN Completion BS	RNBS	30	117	20%	31	101	23%	24	80	23%
Non-matriculated	000	0	2	0%	0	6	0%	0	0	0%
Total Undergraduates		76	120	39%	70	118	37%	79	86	48%
Family Nurse Practitioner CAS	FNPC	0	2		2	1	67%	0	1	0%
Women's Nurse Practitioner CAS	930									
Clinical Nurse Specialist MS	CNSM							4	27	13%
Clinical Nurse Spec. Adult MS	901	4	19	17%	5	25	17%			
Clinical Nurse Spec. HRMI MS	902	0	2	0%	3	3	50%			
Family Nurse Practitioner MS	FNPM	16	61	21%	24	65	27%	16	81	16%
Nurse Anesthesia MS: Kings	940	20	16	56%	13	24	35%			
Nurse Anesthesia MS: Harlem	941	14	11	56%	2	12	14%			
Nurse Anesthesia MS	NRAN							14	18	44%
Nurse Midwifery Completion MS	950									
Nurse Midwifery: RN MS	966	5	4	56%	7	4	64%			
Nurse Midwifery MS	NRMS							9	8	53%
Women's Nurse Practitioner MS	WNPM	1	4	20%	4	8	33%	1	12	8%
Non-matriculated graduate	999							0	2	0%
Total Graduate		60	119	34%	60	142	30%	44	149	91%
Total		136	239	36%	130	260	33%	123	235	34%
Change from previous year				9%			-3%			1%

Program	Code	Year					
		2008			2009		
		FT	PT	%FT	FT	PT	%FT
Accelerated Nursing	NACC	40	6	87%	55	3	95%
RN Completion BS	RNBS	18	116	13%	6	125	5%
Non-matriculated	000						
Total Undergraduates		58	122	32%	61	128	32%
Family Nurse Practitioner CAS	FNPC	0	3	0%	0	2	0%
Women's Nurse Practitioner CAS	930						
Clinical Nurse Specialist MS	CNSM	2	13	13%	0	17	0%
Clinical Nurse Spec. Adult MS	CNSA	0	15	0%	0	4	0%
Clinical Nurse Spec. HRMI MS	902	2	0	100%			
Family Nurse Practitioner MS	FNPM	28	92	23%	19	114	14%
Nurse Anesthesia MS: Kings	940						
Nurse Anesthesia MS: Harlem	941						
Nurse Anesthesia MS	NRAN	5	10	33%	7	6	54%
Nurse Midwifery Completion MS	950						
Nurse Midwifery: RN MS	966						
Nurse Midwifery MS	NRMS	9	6	60%	3	14	18%
Women's Nurse Practitioner MS	WNPM	3	16	16%	6	11	35%
Non-matriculated	999	0	3	0%	0	2	0%
Total Graduate		49	158	24%	35	170	17%
Total		107	280	28%	96	298	24%
Change from previous year				-6%			-4%

College of Nursing
Enrollment by Gender
Fall 2005 to Fall 2009

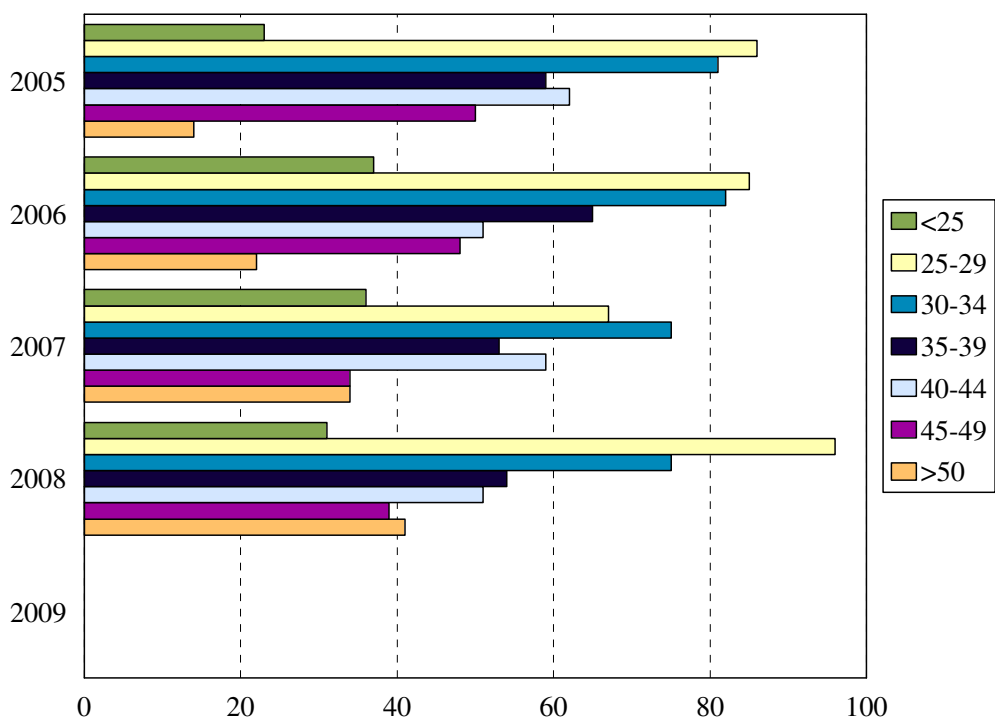


Gender	Year				
	2005	2006	2007	2008	2009
Female	325	345	327	351	353
Male	50	45	31	36	41
% Female	87%	88%	91%	91%	90%
Total	375	390	358	387	394

COLLEGE OF NURSING
ENROLLMENT BY GENDER

Program	Code	2005		2006		2007		2008		2009	
		F	M	F	M	F	M	F	M	F	M
Accelerated Nursing BS	NACC	38	9	42	8	54	7	37	9	48	10
RN Completion BS	RNBS	138	9	122	10	98	6	125	9	117	14
Non-matriculated	000	1	1	5	1	0	0	0	0	0	0
Total Undergraduates		177	19	169	19	152	13	162	18	165	24
Family Nurse Practitioner CAS	FNPC	2	0	3	0	1	0	3	0	2	0
Women's Nurse Practitioner CAS	930										
Clinical Nurse Specialist MS	CNSM					29	2	14	1	17	0
Clinical Nurse Spec. Adult MS	CNSA	20	3	27	3			13	2	4	0
Clinical Nurse Spec. HRMI MS	CNSH	2	0	6	0			2	0		
Family Nurse Practitioner MS	FNPM	71	6	82	7	91	6	110	10	122	11
Nurse Anesthesia MS: Kings	940	25	11	26	11						
Nurse Anesthesia MS: Harlem	941	14	11	9	5						
Nurse Anesthesia MS	NRAN					22	10	10	5	7	6
Nurse Midwifery Completion MS	950										
Nurse Midwifery: RN MS	966	9	0	11	0						
Nurse Midwifery MS	NRMS					17	0	15	0	17	0
Women's Nurse Practitioner MS	WNPM	5	0	12	0	13	0	19	0	17	0
Non-matriculated	999	0	0			2	0	3	0	2	0
Total Graduate		148	31	176	26	175	18	189	18	188	17
Total		325	50	345	45	327	31	351	36	353	41
Change from previous year		-4%	9%	6%	-10%	-5%	-31%	7%	16%	1%	14%

College of Nursing
Enrollment by Age Level
Fall 2005 to Fall 2009

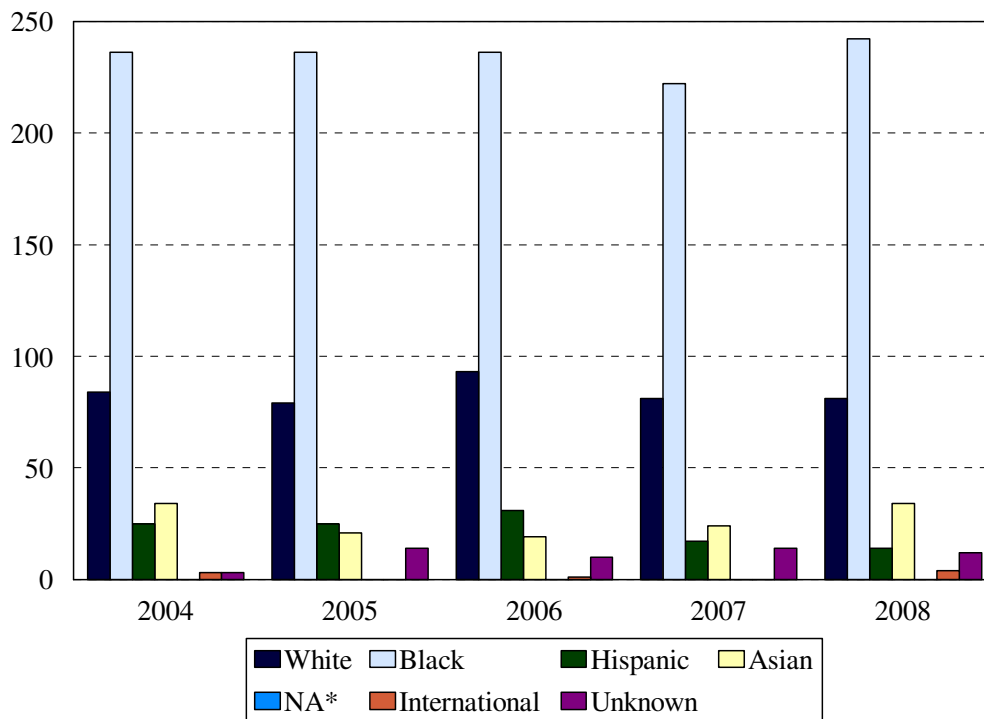


Age	Year									
	2005		2006		2007		2008		2009	
	N	%	N	%	N	%	N	%	N	%
Under 25	23	6%	37	9%	36	10%	31	8%		
25-29	86	23%	85	22%	67	19%	96	25%		
30-34	81	22%	82	21%	75	21%	75	19%		
35-39	59	16%	65	17%	53	15%	54	14%		
40-44	62	17%	51	13%	59	16%	51	13%		
45-49	50	13%	48	12%	34	10%	39	10%		
50 and over	14	4%	22	6%	34	10%	41	11%		
Age range	19-55		19-58		21-59		21-60			
Median age	34		34		35		34			
Total	375		390		358		387			

COLLEGE OF NURSING
MEDIAN AGE BY PROGRAM

Award	Program	Code	Median Age				
			2005	2006	2007	2008	2009
BS	Accelerated Nursing BS	NACC	30.0	28.0	29.0	28.0	26.0
BS	RN Completion BS	RNBS	35.0	34.0	35.0	35.5	35.0
	Non-matriculated	000	38.0	34.0			
	Total Undergraduate		33.0	33.0	33.0	33.0	31.0
CAS	Family Nurse Practitioner	FNPC	46.0	40.0	36.0	37.0	40.0
CAS	Women's Nurse Practitioner	930					
MS	Clinical Nurse Specialist	CNSM			39.0	37.0	43.0
MS	Clinical Nurse Spec. Adult	901	37.0	39.5		34.0	29.0
MS	Clinical Nurse Spec. HRMI	902	39.0	28.5		41.0	
MS	Family Nurse Practitioner	FNPM	39.0	38.0	40.0	37.0	34.0
MS	Nurse Anesthesia : KCH	940	34.0	35.0			
MS	Nurse Anesthesia: Harlem	941	31.0	31.5			
MS	Nurse Anesthesia	NRAN			37.0	33.0	34.0
MS	Nurse Midwifery Completion	950					
MS	Nurse Midwifery: RN	966	31.0	29.0			
MS	Nurse Midwifery	NRMS			31.0	31.0	31.0
MS	Women's Nurse Practitioner	WNPM	32.0	32.0	33.0	29.0	26.0
	Non-matriculated	999			39.0	48.0	24.0
	Total Graduate		35.0	35.0	36.0	36.0	32.0
	Total		34.0	34.0	35.0	34.0	32.0
	Change from previous year		0	0	1	-1	

College of Nursing
Enrollment by Ethnic Group
Fall 2005 to Fall 2009



*Native American

Ethnic Group (IPEDS Categories)	Year									
	2005		2006		2007		2008		2009	
	N	%	N	%	N	%	N	%	N	%
White	79	21%	93	24%	81	23%	81	21%	99	25%
Black	236	63%	236	61%	222	62%	242	63%	229	58%
Hispanic	25	7%	31	8%	17	5%	14	4%	17	4%
Asian/Pacific Islander	21	6%	19	5%	24	7%	34	9%	35	9%
Native American										
International	0	0%	1	<1%			4	1%	5	1%
Unknown	14	4%	10	3%	14	4%	12	3%	9	2%
% Black and Hispanic		70%		68%		67%		66%		62%
Total	375		390		358		387		394	

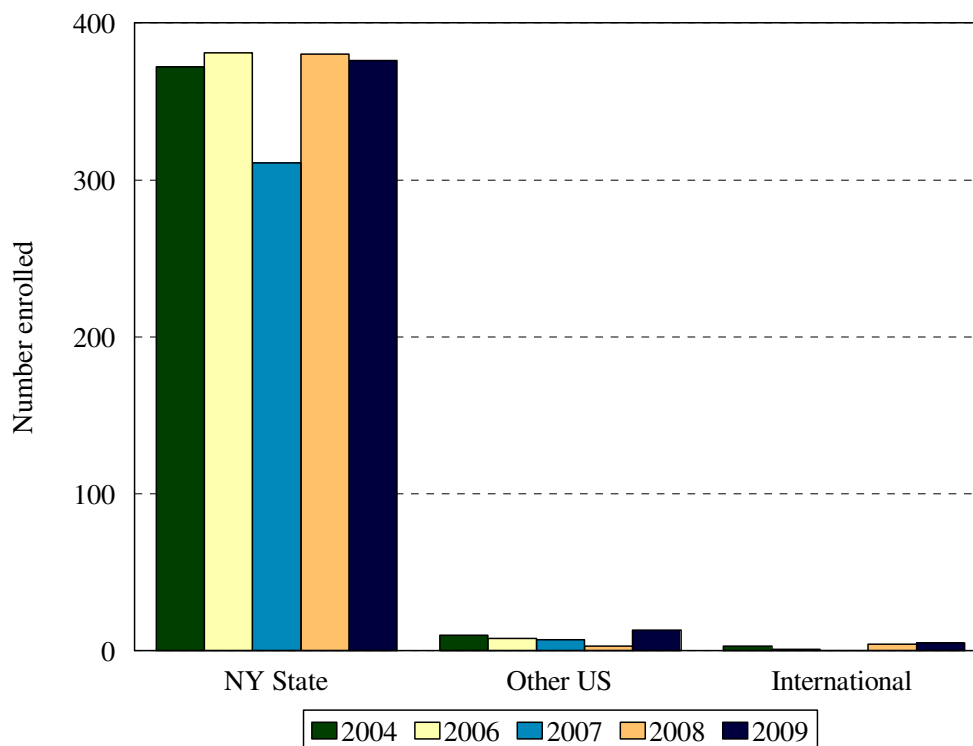
- The Integrated Postsecondary Education Data Set (IPEDS) ethnic categories are those used by the U.S. Department of Education.

ENROLLMENT BY ETHNIC GROUP BY PROGRAM
COLLEGE OF NURSING

Program	2005						2006					
	White	Black	Hispanic	Asian	International	Unknown	White	Black	Hispanic	Asian	International	Unknown
NACC	19	20	5	3	0	0	21	21	3	5	0	0
RNBS	11	113	7	6	0	10	29	85	11	4	1	2
000	1	1	0	0	0	0	2	3	1	0	0	0
Total Und.	31	134	12	9	0	10	52	109	15	9	1	2
FNPC	0	2	0	0	0	0	0	2	0	0	0	1
930												
CNSM												
901	2	20	0	1	0	0	3	24	0	1	0	2
902	0	2	0	0	0	0	0	6	0	0	0	0
FNPM	15	51	5	2	0	4	13	66	5	2	0	3
940	19	11	4	2	0	0	14	14	4	4	0	1
941	8	6	4	7	0	0	6	2	4	2	0	0
NRAN												
950												
966	3	6	0	0	0	0	4	5	1	1	0	0
NRMS												
WNPM	1	4	0	0	0	0	1	8	2	0	0	0
999												
Total Grad.	48	102	13	12	0	4	41	127	16	10	0	8
Total	79	236	25	21	0	14	93	236	31	19	1	10

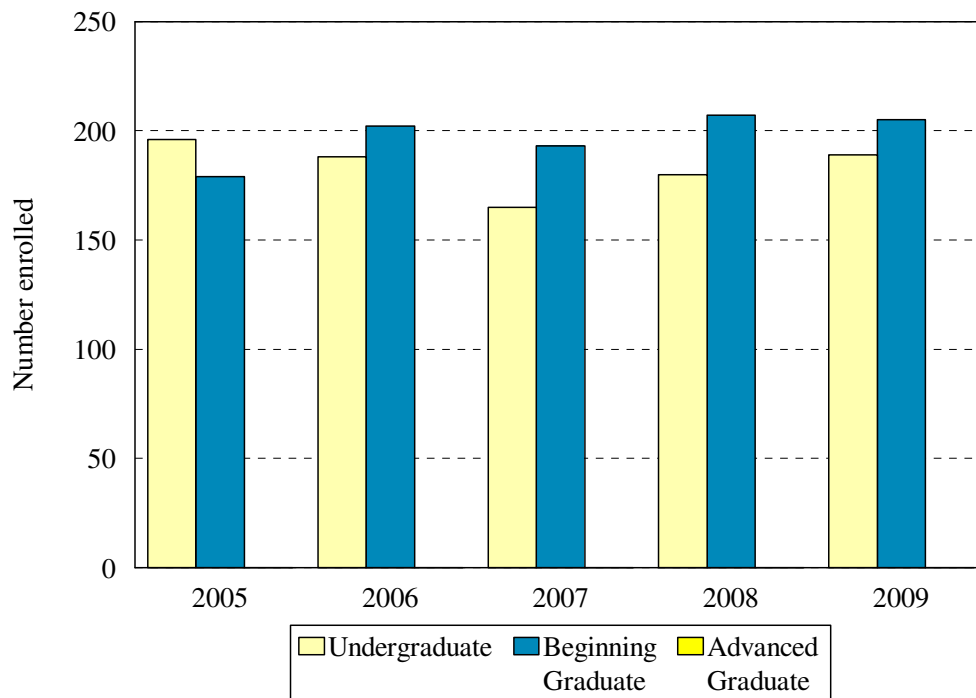
Program	2007						2008						2009					
	White	Black	Hispanic	Asian	International	Unknown	White	Black	Hispanic	Asian	International	Unknown	White	Black	Hispanic	Asian	International	Unknown
NACC	24	27	2	8	0	0	24	12	1	5	1	3						
RNBS	21	64	7	5	0	7	27	82	7	12	2	4						
000	0	0	0	0	0	0												
Total Undergrad	45	91	9	13	0	7	51	94	8	17	3	7						
FNPC	0	1	0	0	0	0	1	1	0	0	0	1						
930																		
CNSM	2	27	0	1	0	1	0	10	0	5	0	0						
901							2	12	0	0	0	1						
902							0	2	0	0	0	0						
FNPM	18	70	2	3	0	4	19	88	2	8	1	2						
940																		
941																		
NRAN	9	14	3	5	0	1	1	9	1	3	0	1						
950																		
966																		
NRMS	5	10	1	1	0	0	2	12	1	0	0	0						
WNPM	2	7	2	1	0	1	5	11	2	1	0	0						
999	0	2	0	0	0	0	0	3	0	0	0	0						
Total Grad.	36	131	8	11	0	7	30	148	6	17	1	5						
Total	81	222	17	24	0	14	81	242	14	34	4	12						

College of Nursing
Enrollment by Permanent Residence
Fall 2005 to Fall 2009



Residency	Year									
	2005		2006		2007		2008		2009	
	N	% of total	N	% of total	N	% of total	N	% of total	N	% of total
New York State	369	98%	381	98%	311	87%	380	98%	376	95%
New York City	317	85%	340	87%	304	85%	331	86%	329	84%
Bronx	12	3%	11	3%	16	4%	16	4%	19	5%
Kings (Brooklyn)	206	55%	218	56%	193	54%	211	55%	198	50%
Manhattan	23	6%	19	5%	19	5%	9	2%	16	4%
Queens	70	19%	89	23%	71	20%	87	22%	89	23%
Richmond (Staten I.)	6	2%	3	1%	5	1%	8	2%	7	2%
Other U.S.	6	2%	8	2%	7	2%	3	<1%	13	3%
International	0	0%	1	<1%	0	0%	4	1%	5	1%
Total	375		390		358		387		394	

College of Nursing
Enrollment by Student Level
Fall 2005 to Fall 2009



Note: Beginning graduates include MS degree students and CAS students with few than 24 credits; advanced graduate students include only CAS students with more than 23 credits.

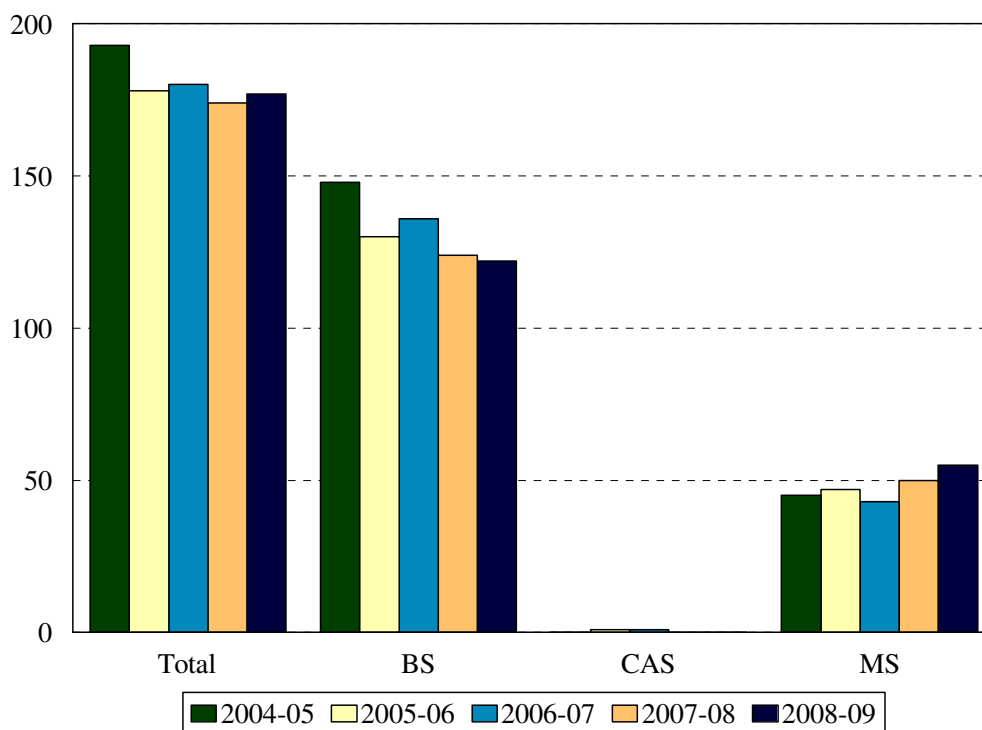
Student Level	Year									
	2005		2006		2007		2008		2009	
	N	%	N	%	N	%	N	%	N	%
Undergraduate	196	52%	188	48%	165	46%	180	47%	189	48%
Beginning Graduate	179	48%	202	52%	193	54%	207	53%	205	52%
Advanced Graduate	0	0%	0	0%	0	0%	0	0%	0	0%
Total	375		390		358		387		394	

ENROLLMENT BY STUDENT LEVEL
COLLEGE OF NURSING

Program	Code	2005			2006		
		Undergraduates	Beginning Graduates	Advanced Graduates	Undergraduates	Beginning Graduates	Advanced Graduates
Accelerated Nursing BS	NACC	47			50		
RN Completion BS	RNBS	147			132		
Non-matriculated undergrad	000	2			6		
Family Nurse Practitioner CAS	FNPC		2			3	
Women's Nurse Practitioner CAS	930						
Clinical Nurse Specialist MS	CNSM						
Clinical Nurse Spec. Adult MS	901		23			30	
Clinical Nurse Spec. HRMI MS	902		2			6	
Family Nurse Practitioner MS	FNPM		77			89	
Nurse Anesthesia MS: Kings	940		36			37	
Nurse Anesthesia MS: Harlem	941		25			14	
Nurse Anesthesia MS	NRAN						
Nurse Midwifery Completion MS	950						
Nurse Midwifery: RN MS	966		9			11	
Nurse Midwifery MS	NRMS						
Women's Nurse Practitioner MS	WNPM					12	
Non-matriculated	999						
Total		196	179		188	202	
Change from previous year		-4%	-1%		-4%	13%	

Program	Code	2007			2008			2009		
		Undergraduates	Beginning Graduates	Advanced Graduates	Undergraduates	Beginning Graduates	Advanced Graduates	Undergraduates	Beginning Graduates	Advanced Graduates
Accelerated Nursing BS	NACC	61			46			58		
RN Completion BS	RNBS	104			134			131		
Non-matriculated undergrad	000									
Family Nurse Practitioner CAS	FNPC		1			3			2	
Women's Nurse Practitioner CAS	930									
Clinical Nurse Specialist MS	CNSM		31			15			17	
Clinical Nurse Spec. Adult MS	901					15			4	
Clinical Nurse Spec. HRMI MS	902					2				
Family Nurse Practitioner MS	FNPM		97			120			133	
Nurse Anesthesia MS: Kings	940									
Nurse Anesthesia MS: Harlem	941									
Nurse Anesthesia MS	NRAN		32			15			13	
Nurse Midwifery Completion MS	950									
Nurse Midwifery: RN MS	966									
Nurse Midwifery MS	NRMS		17			15			17	
Women's Nurse Practitioner MS	WNPM		13			19			17	
Non-matriculated grad	999					3			2	
Total		165	193		180	207		189	205	
Change from previous year		-12%	-4%		9%	7%		5%	-1%	

Degrees Granted by Level
College of Nursing
2004-2005 to 2008-2009



Degrees	Code	Year				
		2004-05	2005-06	2006-07	2007-08	2008-09
Generic-Nursing BS	291					
RN Completion BS	RNBS	121		44	82	67
Accelerated Nursing	NACC	27	130	92	42	55
Family Nurse Practitioner CAS	FNPC	0	1	1		0
Women's Nurse Practitioner CAS	930	0				
Clinical Nurse Specialist MS	CNSM		1			
Clinical Nurse Spec. Adult MS	CNSA	2		7	2	3
Clinical Nurse Spec. HRMI MS	CNSH	2			1	1
Family Nurse Practitioner MS	FNPM	18	18	13	26	32
Nurse Anesthesia MS: Kings	940	12	26	10		
Nurse Anesthesia MS: Harlem	941	10		11		
Nurse Anesthesia MS	NRAN				16	14
Nurse Midwifery Completion MS	950	0	1			
Nurse Midwifery: RN MS	966	1		2		
Nurse Midwifery MS	NRMS				3	3
Women's Nurse Practitioner MS	WNPM	0	1		2	2
Total		193	178	180	174	177
Change from previous year		52%	-8%	1%	-3%	

COLLEGE OF NURSING
DEGREES EARNED BY ETHNIC GROUP

Ethnic Group	Year				
	2004-05	2005-06	2006-07	2007-08	2008-09
White	36	39	36	48	46
% change	112%	8%	-8%	33%	-4%
Black	139	103	116	98	101
% change	51%	-26%	13%	-16%	3%
Hispanic	4	7	17	9	10
% change	-56%	75%	143%	-47%	11%
Asian	13	21	10	11	18
% change	86%	62%	-52%	10%	64%
Native American	0	0	0	0	0
% change					
International	0	3	0	0	0
% change	-100%		-100%		
Unknown	1	5	1	8	2
% change	0%	400%	-80%	700%	-75%
Total	193	178	180	174	177
Change from previous year	52%	-8%	1%	-3%	2%