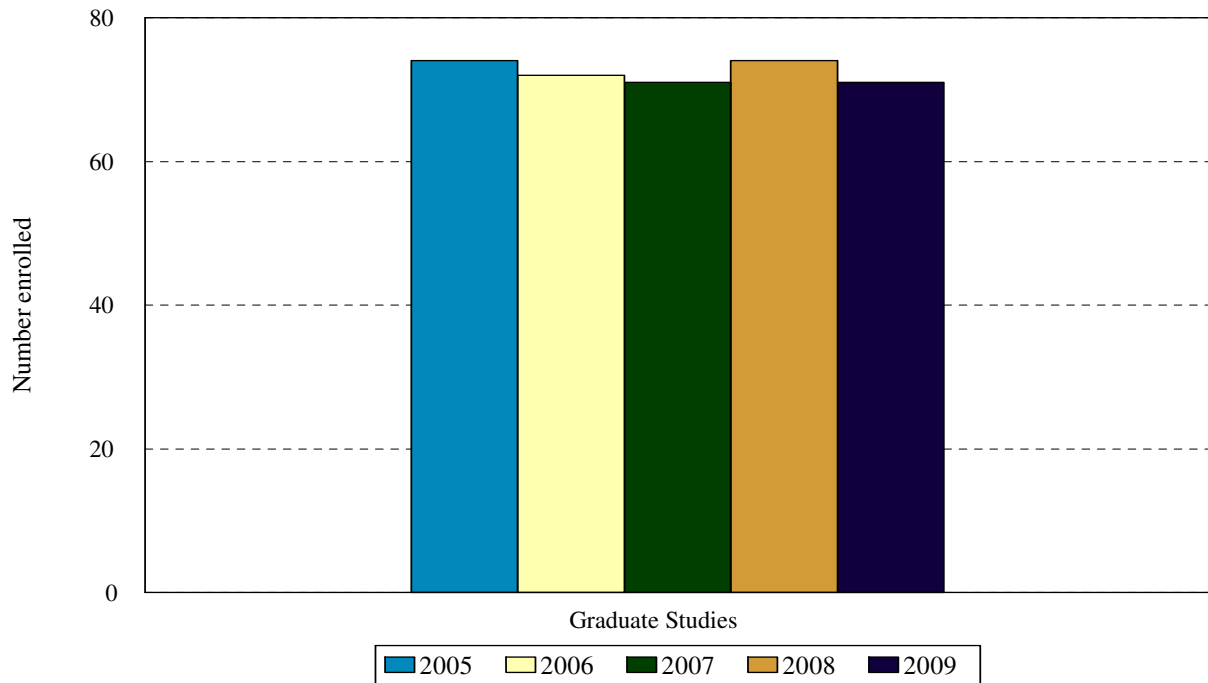


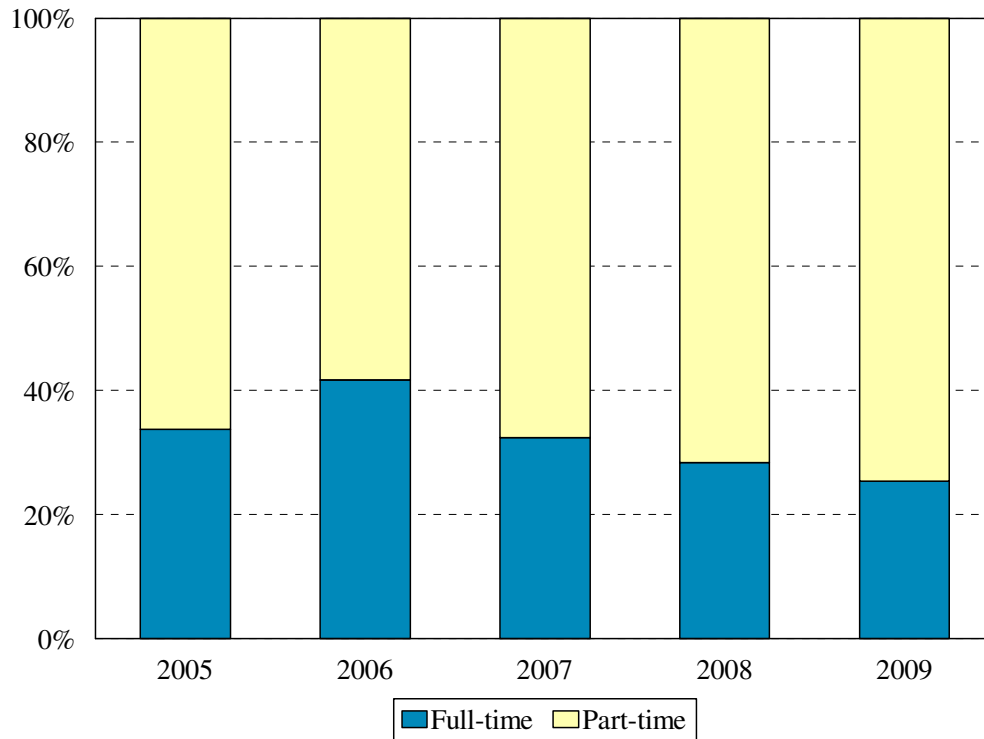
School of Graduate Studies Enrollment

Fall 2005 to Fall 2009



School	Year				
	2005	2006	2007	2008	2009
Graduate Studies	74	72	71	74	71
Change from previous year	-1%	-3%	-1%	4%	-4%

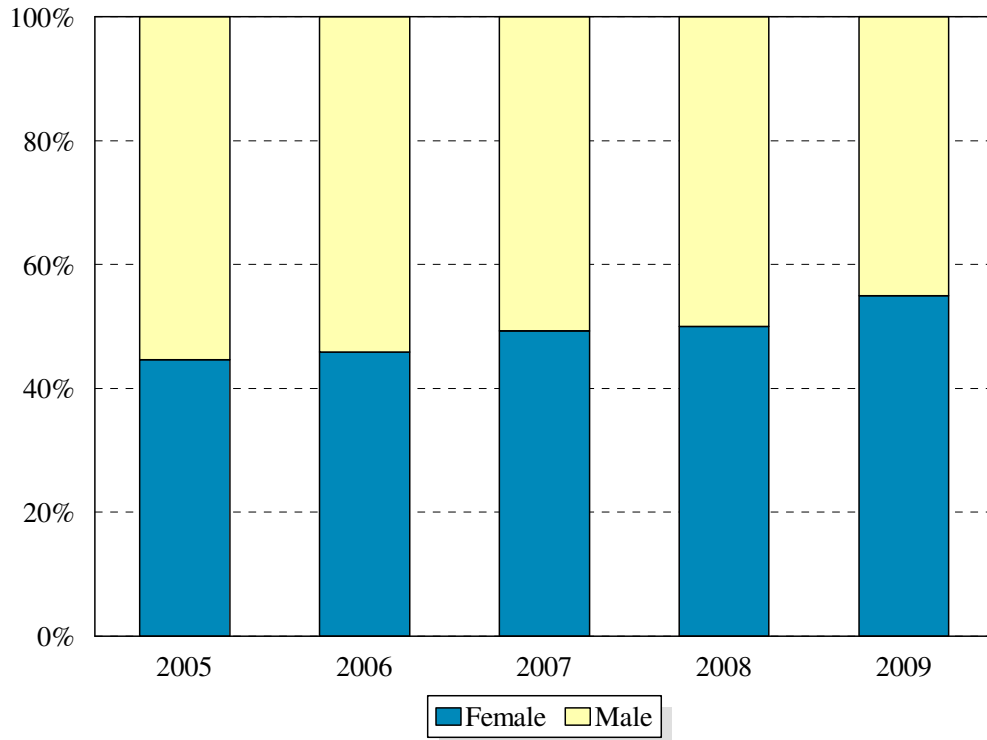
School of Graduate Studies Enrollment by Full- and Part-time Status Fall 2005 to Fall 2009



Enrollment Levels	Year				
	2005	2006	2007	2008	2009
Full-time	25	30	23	21	18
Part-time*	49	42	48	53	53
% Full-time	34%	42%	32%	28%	25%
Total	74	72	71	74	71

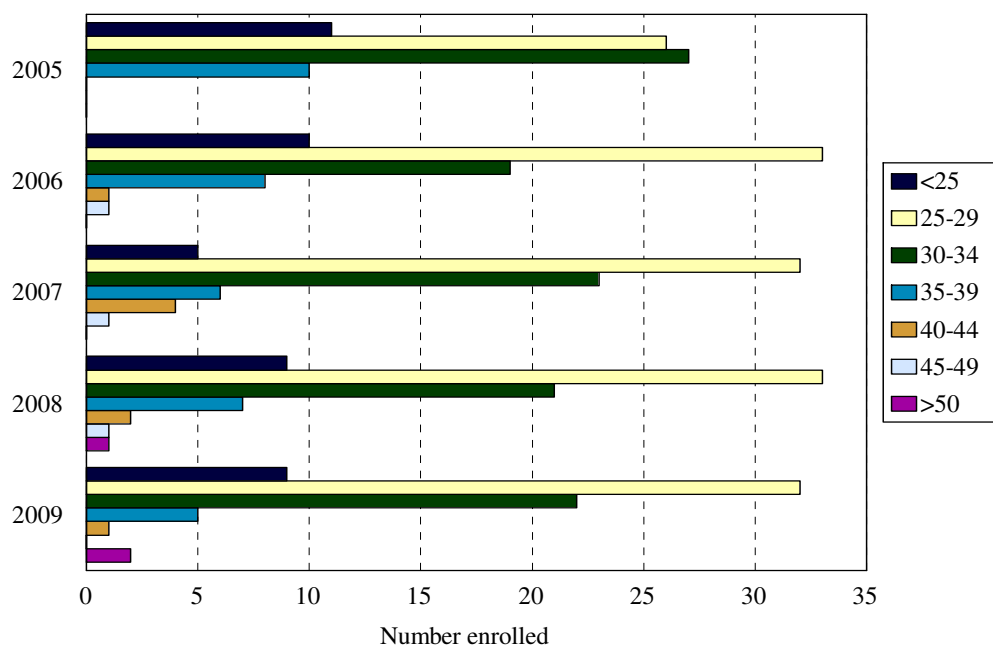
*Students are registered for less than full time credit hours after the first year but they are engaged in research on a full time basis.

School of Graduates Studies Enrollment by Gender Fall 2005 to Fall 2009



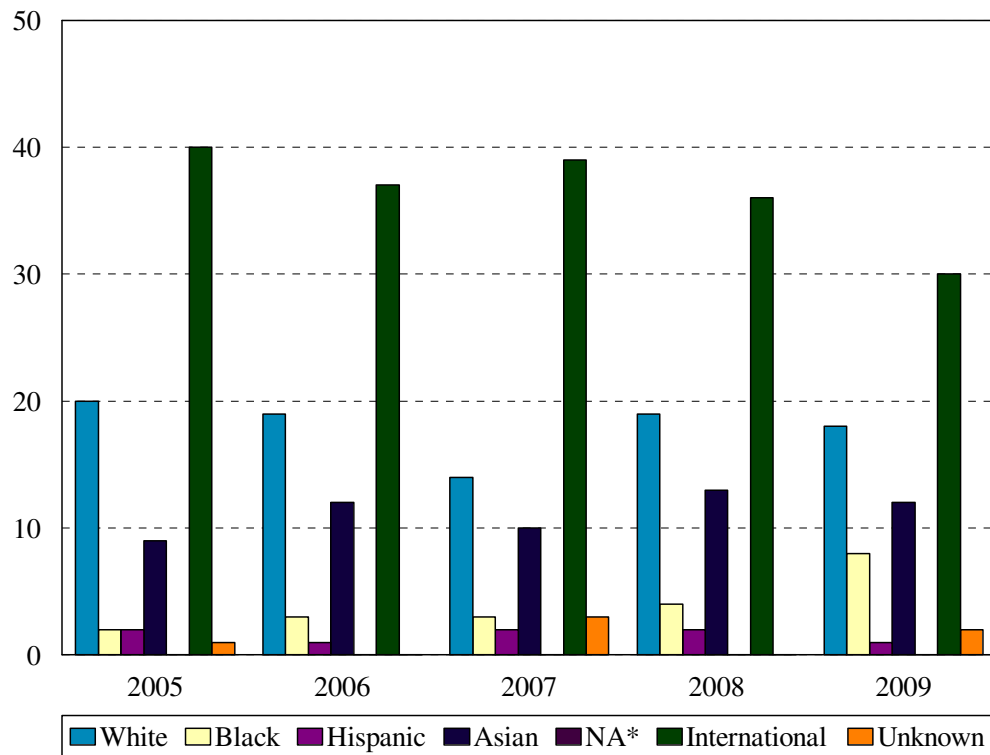
Gender	Year				
	2005	2006	2007	2008	2009
Female	33	33	35	37	39
Male	41	39	36	37	32
% Female	45%	46%	49%	50%	55%
Total	74	72	71	74	71

School of Graduate Studies Enrollment by Age Level Fall 2005 to Fall 2009



Age	Year									
	2005		2006		2007		2008		2009	
	N	%	N	%	N	%	N	%	N	%
Under 25	11	15%	10	14%	5	7%	9	12%	9	13%
25-29	26	35%	33	46%	32	45%	33	45%	32	45%
30-34	27	36%	19	26%	23	32%	21	28%	22	31%
35-39	10	14%	8	11%	6	8%	7	9%	5	7%
40-44	0	0%	1	1%	4	6%	2	3%	1	1%
45-49	0	0%	1	1%	1	1%	1	1%	0	0%
50 and over	0	0%	0	0%	0	0%	1	1%	2	3%
Median age	29.5		28		29		29		29	
Age range	21-39		22-46		22-48		23-58		22-59	
Total	74		72		71		74		71	

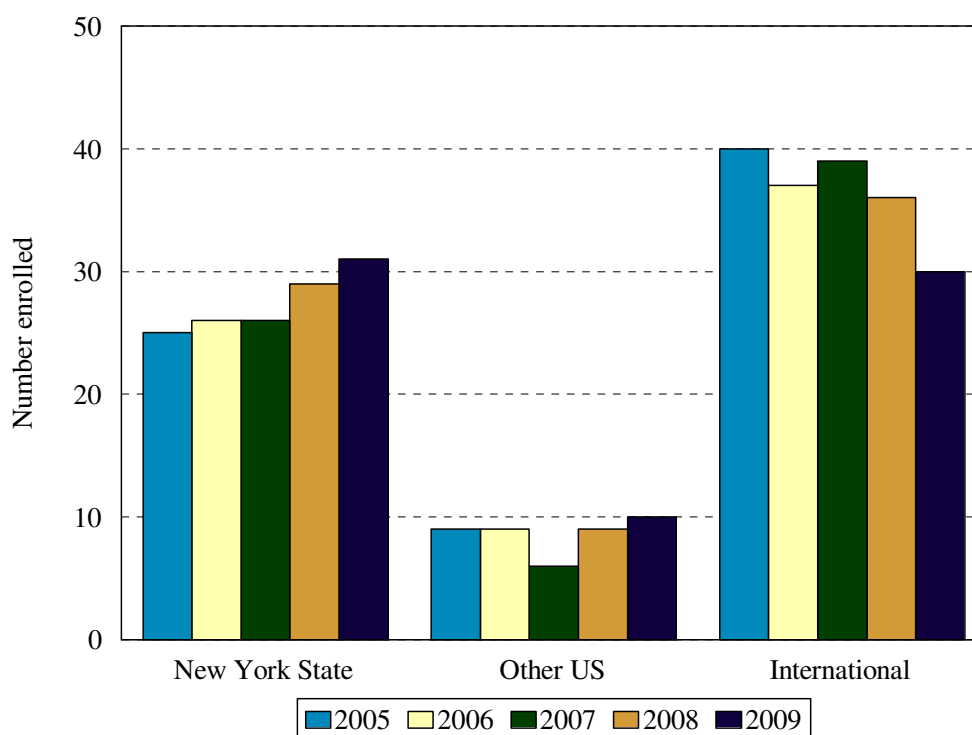
School of Graduate Studies Enrollment by Ethnic Group Fall 2005 to Fall 2009



Ethnic Group (IPEDS Categories)	Year									
	2005		2006		2007		2008		2009	
	N	%	N	%	N	%	N	%	N	%
White	20	27%	19	26%	14	20%	19	26%	18	25%
Black	2	3%	3	4%	3	4%	4	5%	8	11%
Hispanic	2	3%	1	1%	2	3%	2	3%	1	1%
Asian/Pacific Islander	9	12%	12	17%	10	14%	13	18%	12	17%
Native American	0	0%	0	0%	0	0%	0	0%	0	0%
International	40	54%	37	51%	39	55%	0	0%	30	42%
Unknown	1	1%	0	0%	3	4%	36	49%	2	3%
% Black and Hispanic		6%		6%		7%		8%		12%
Total	74		72		71		74		71	

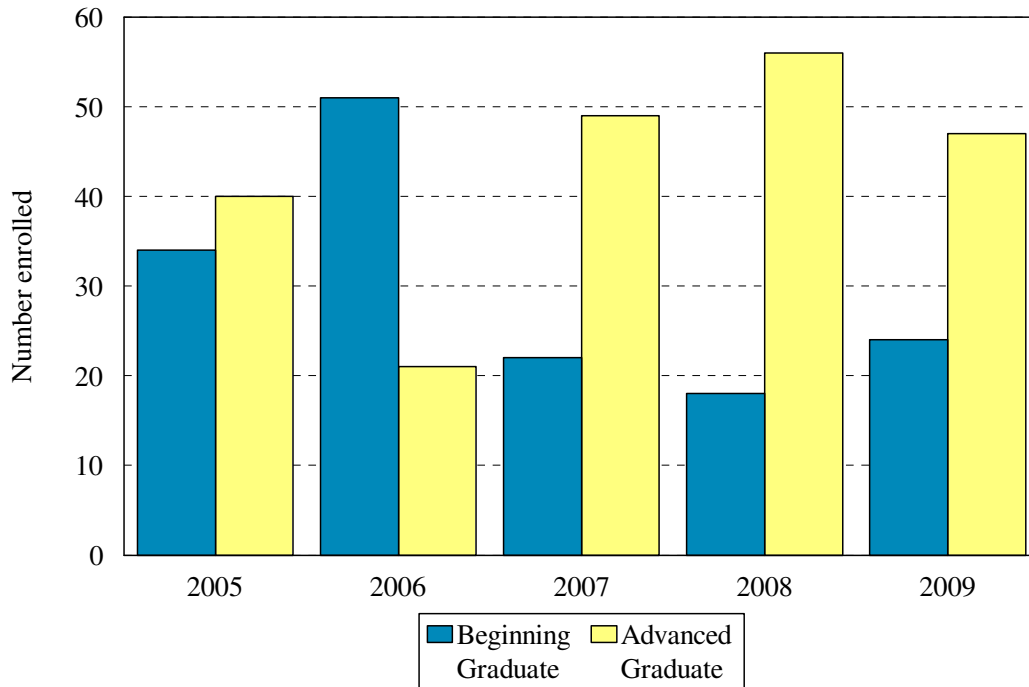
- The Integrated Postsecondary Education Data Set (IPEDS) ethnic categories are those used by the U.S. Department of Education.

School of Graduate Studies
Enrollment by Permanent Residence
 Fall 2005 to Fall 2009



Residency	Year									
	2005		2006		2007		2008		2009	
	N	% of total	N	% of total	N	% of total	N	% of total	N	% of total
New York State	25	34%	26	36%	26	37%	29	39%	31	44%
New York City	22	30%	24	33%	24	34%	27	36%	26	37%
Bronx	0	0%	1	1%	0	0%	1	1%	0	0%
Kings (Brooklyn)	14	19%	15	21%	13	18%	13	18%	15	21%
Manhattan	3	4%	4	6%	5	7%	6	8%	5	7%
Queens	4	5%	3	4%	5	7%	5	7%	4	6%
Richmond (Staten I.)	1	1%	1	1%	1	1%	2	3%	2	3%
Other U.S.	9	12%	9	13%	6	8%	9	12%	10	14%
International	40	54%	37	52%	39	55%	36	49%	30	42%
Total	74		72		71		74		71	

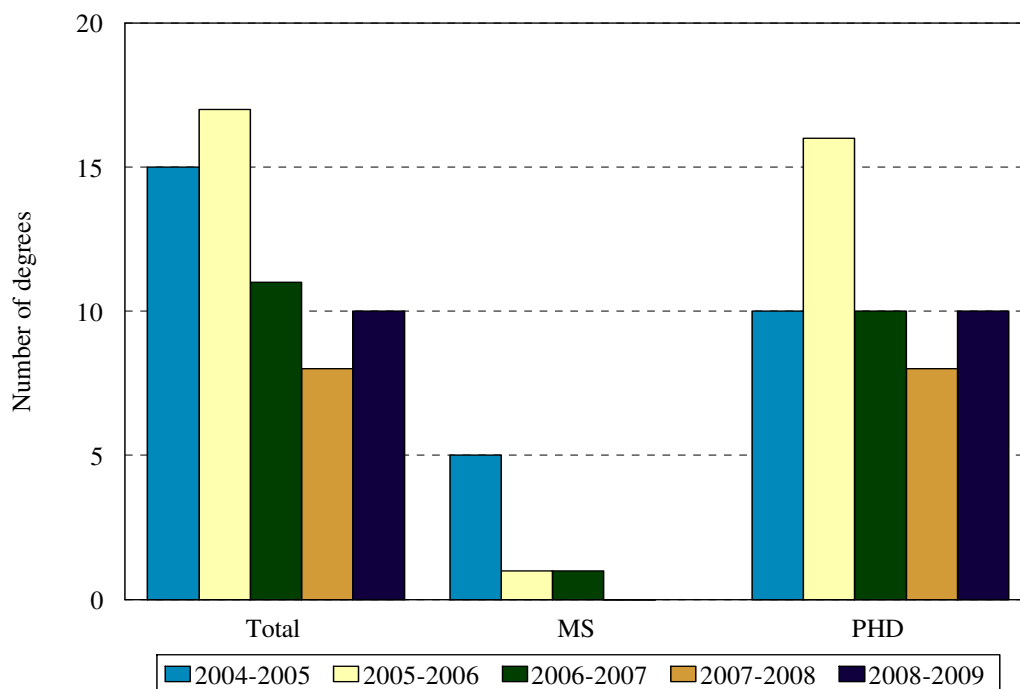
School of Graduate Studies Enrollment by Student Level Fall 2005 to Fall 2009



Note: Beginning graduates are Ph.D. students who have completed 0-23 graduate credits; advanced graduates, 24 or more.

Age	Year									
	2005		2006		2007		2008		2009	
	N	%	N	%	N	%	N	%	N	%
Beginning Graduate	34	46%	51	71%	22	31%	18	24%	24	34%
Advanced Graduate	40	54%	21	29%	49	69%	56	76%	47	66%
Total	74	100%	72	100%	71	100%	74	100%	71	100%

School of Graduate Studies Degrees Granted 2004-2005 to 2008-2009



	Year				
	2004-2005	2005-2006	2006-2007	2007-2008	2008-2009
Master of Science	5	1	1	0	0
Anatomy	1		1		
Biochemistry					
Microbiology	4		0		
Neural and Behavioral Science					
Pharmacology		1			
Doctor of Philosophy	10	16	11	8	10
Anatomy & Cell Biology	1				
Biochemistry					
Microbiology & Cell Biology			2		
Molecular & Cell Biology	4	11	6	4	5
Neural and Behavioral Science	5	5	3	4	5
Pathology					
Pharmacology					
Physiology					
Total	15	17	12	8	10