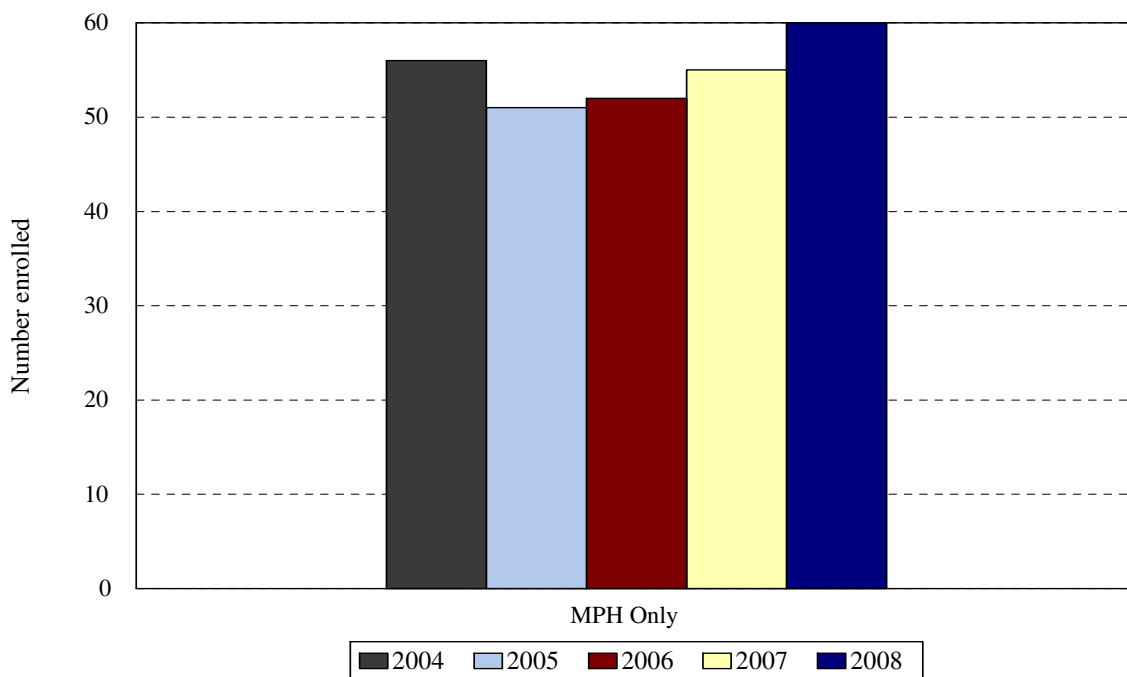


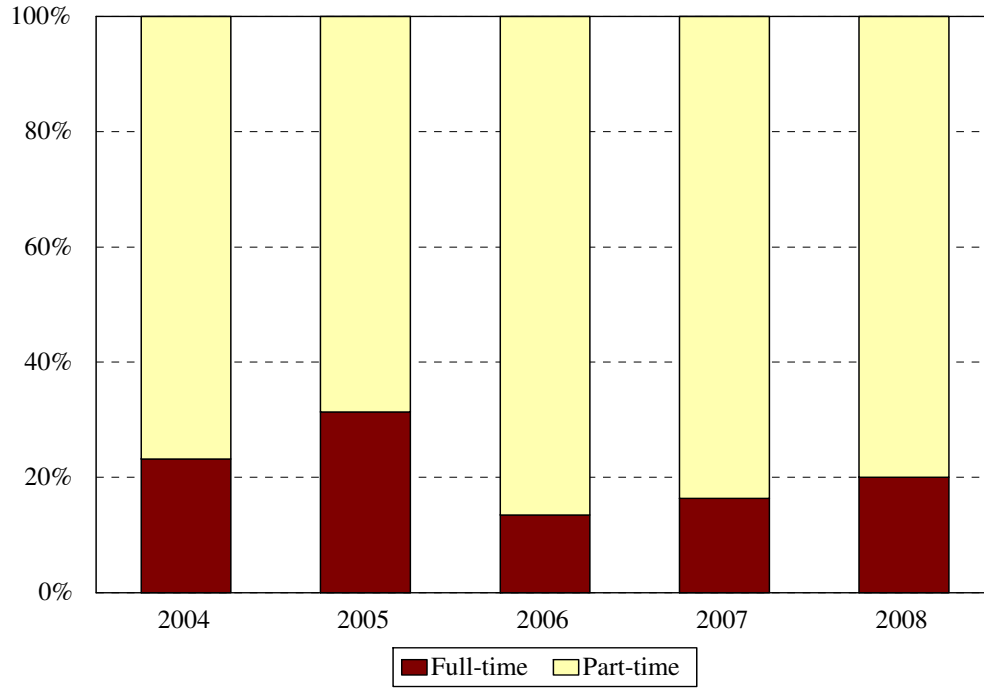
School of Public Health Fall 2004 to Fall 2008



College of Medicine MD and MD/MPH	Year				
	2004	2005	2006	2007	2008
New students	20	38	31	39	36
Continuing students	36	13	21	16	24
Total	56	51	52	55	60
Change from previous year	41%	-9%	2%	6%	8%

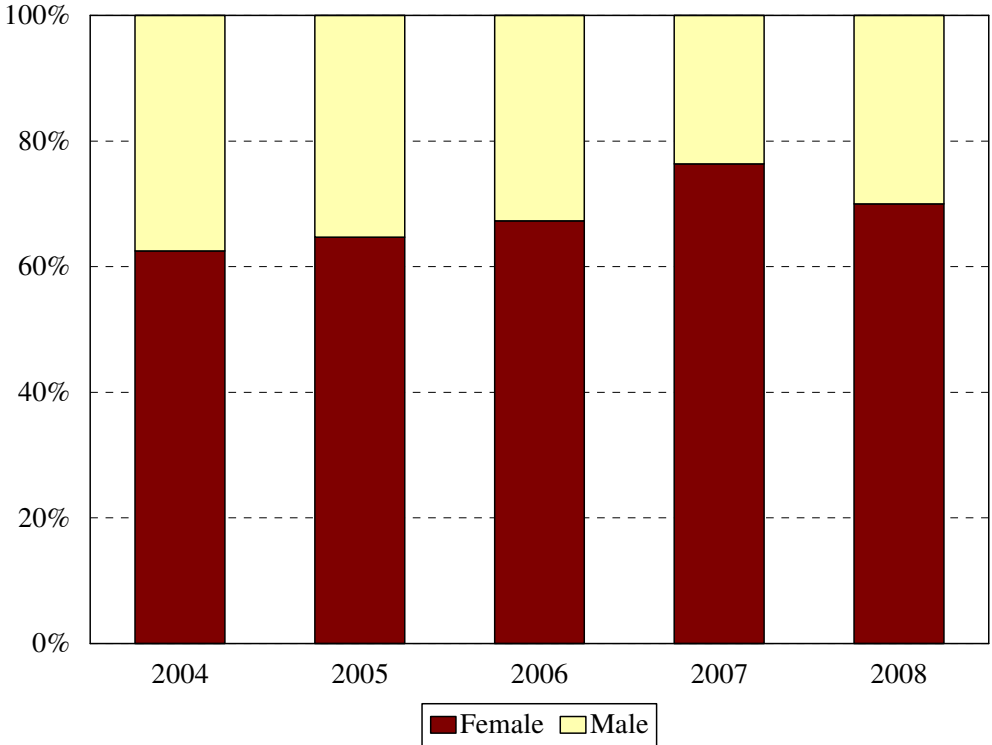
The totals do **not** include students concurrently enrolled in the MD/MPH Programs: 6 in 2002, 10 in 2003, 16 in 2004, 17 in 2005, and 17 in 2006.

School of Public Health
Enrollment by Full- and Part-time Status
 Fall 2004 to Fall 2008



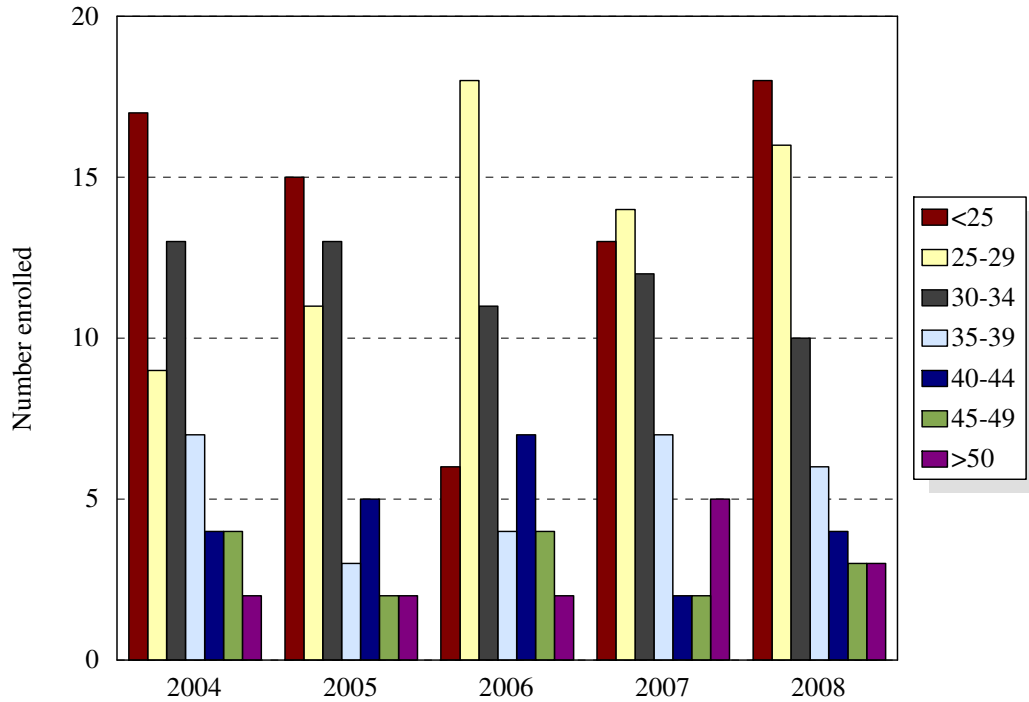
Enrollment Levels	Year				
	2004	2005	2006	2007	2008
Full-time	13	16	7	9	12
Part-time	43	35	45	46	48
% Full-time	23%	31%	13%	16%	20%
Total	56	51	52	55	60

**School of Public Health
Enrollment by Gender**
Fall 2004 to Fall 2008



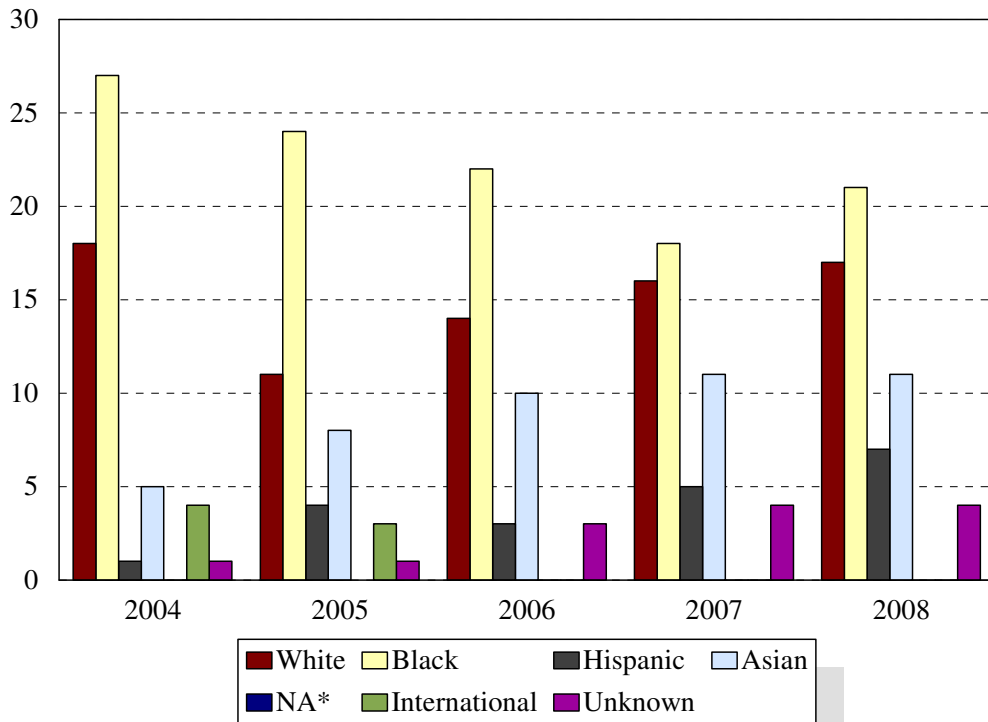
Gender	Year			Year			Year			Year			Year		
	2004			2005			2006			2007			2008		
	F	M	%F	F	M	%F	F	M	%F	F	M	%F	F	M	%F
Total	35	21	63%	33	18	65%	35	17	67%	42	13	76%	42	18	70%
Change from previous year			2%			2%			3%			9%			-8%

School of Public Health Enrollment by Age Level Fall 2004 to Fall 2008



Age	Year									
	2004		2005		2006		2007		2008	
	N	%	N	%	N	%	N	%	N	%
Under 25	17	30%	15	29%	6	12%	13	24%	18	30%
25-29	9	16%	11	22%	18	35%	14	25%	16	27%
30-34	13	23%	13	25%	11	21%	12	22%	10	17%
35-39	7	13%	3	6%	4	8%	7	13%	6	10%
40-44	4	7%	5	10%	7	13%	2	4%	4	7%
45-49	4	7%	2	4%	4	8%	2	4%	3	5%
50 and over	2	4%	2	4%	2	4%	5	9%	3	5%
Median age	31		31		30		30		29	
Age range	21-53		21-54		21-55		22-60		22-61	
Total	56		51		52		55		60	

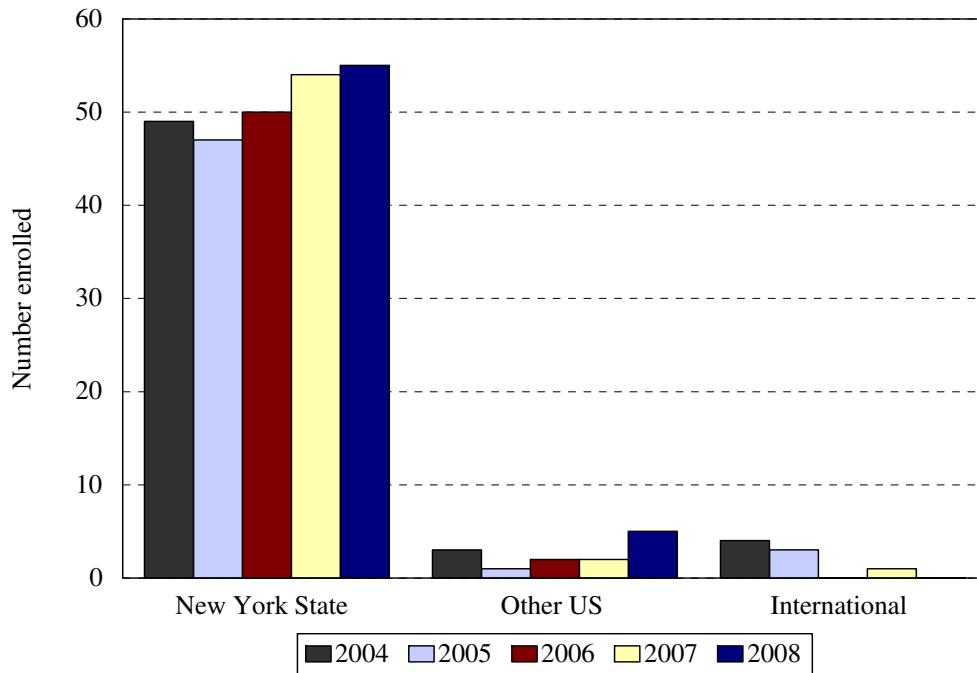
School of Public Health Enrollment by Ethnic Group Fall 2004 to Fall 2008



Ethnic Group (IPEDS Categories)	Year									
	2004		2005		2006		2007		2008	
	N	%	N	%	N	%	N	%	N	%
White	18	32%	11	22%	14	27%	16	29%	17	31%
Black	27	48%	24	47%	22	42%	18	33%	21	38%
Hispanic	1	2%	4	8%	3	6%	5	9%	7	13%
Asian/Pacific Islander	5	9%	8	16%	10	19%	11	20%	11	20%
Native American	0	0%	0	0%	0	0%	0	0%	0	0%
International	4	7%	3	6%	0	0%	0	0%	0	0%
Unknown	1	2%	1	2%	3	6%	4	7%	4	7%
<i>Black and Hispanic</i>	28	50%	28	55%	25	48%	23	42%	28	51%
Total	56		51		52		55		60	

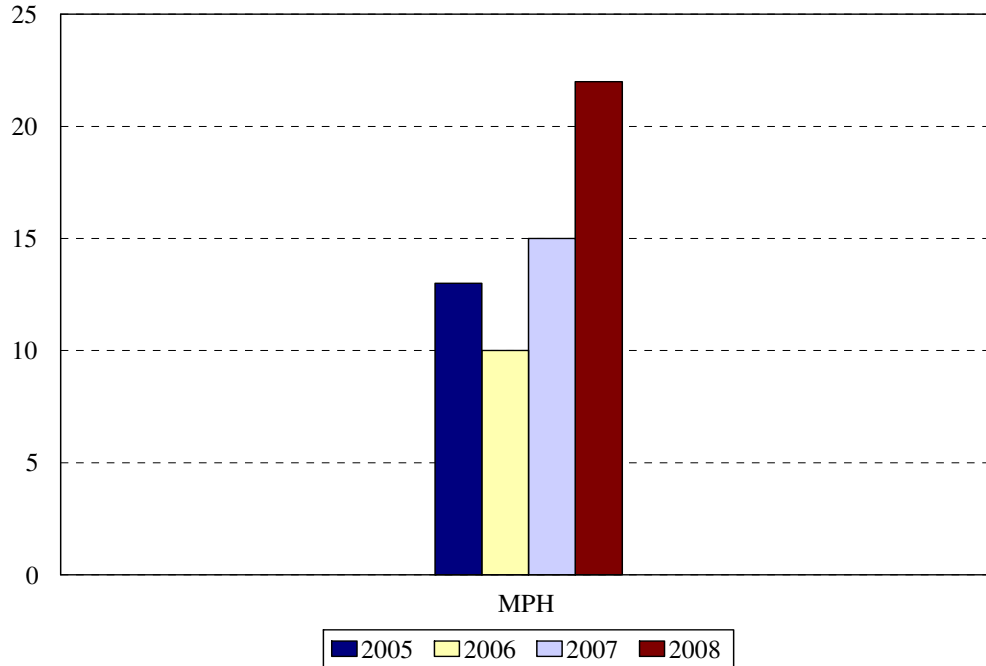
- The Integrated Postsecondary Education Data Set (IPEDS) ethnic categories are those used by the U.S. Department of Education.

School of Public Health Enrollment by Permanent Residence Fall 2004 to Fall 2008



Residency	Year									
	2004		2005		2006		2007		2008	
	N	% of total	N	% of total	N	% of total	N	% of total	N	% of total
New York State	49	88%	47	92%	50	96%	54	98%	55	92%
New York City	40	71%	40	78%	39	75%	42	76%	44	73%
Bronx	2	4%	1	2%	1	2%	2	4%	1	2%
Kings (Brooklyn)	26	46%	28	55%	28	54%	25	45%	27	45%
Manhattan	4	7%	5	10%	3	6%	2	4%	4	7%
Queens	6	11%	5	10%	5	10%	8	15%	9	15%
Richmond (Staten I.)	2	4%	1	2%	2	4%	3	5%	3	5%
Other U.S.	3	5%	1	2%	2	4%	2	4%	5	8%
International	4	7%	3	6%			1	2%	0	0%
Total	56		51		52		55		60	

School of Public Health
Degrees Granted by Level
 Fiscal Years 2003-2004 to 2007-2008



Degree Level	Year				
	2003-2004	2004-2005	2005-2006	2006-2007	2007-2008
MPH		13	10	15	22
Change from previous year			-23%	50%	47%

School of Public Health
DEGREES EARNED BY ETHNIC GROUP

Ethnic Group	Year				
	2003- 2004	2004- 2005	2005- 2006	2006- 2007	2007- 2008
White		5	2	4	4
% change			-80%	100%	0%
Black		4	4	8	9
% change			0%	100%	13%
Hispanic		0	2	1	0
% change				-50%	0%
Asian		2	2	2	8
% change			0%	0%	300%
Native American		0	0	0	0
			0%	0%	0%
International		2	0	0	0
% change			-100%	0%	0%
Unknown		0	0	0	1
% change			0%	0%	
Total		13	10	15	22
Change from previous year			-23%	50%	47%