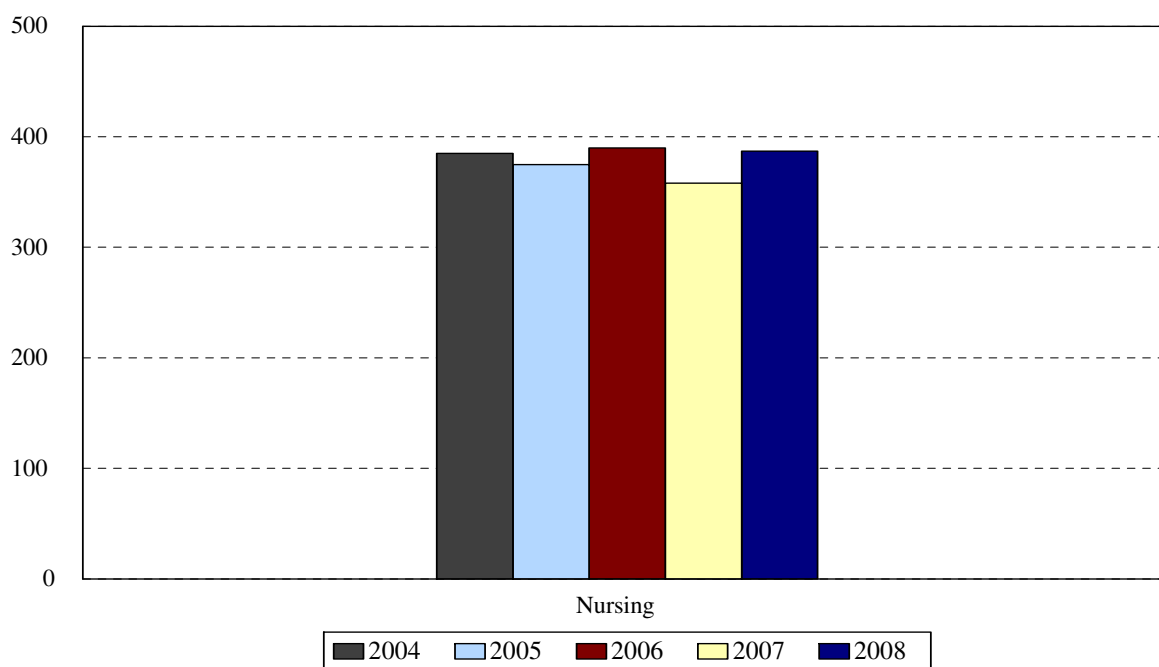


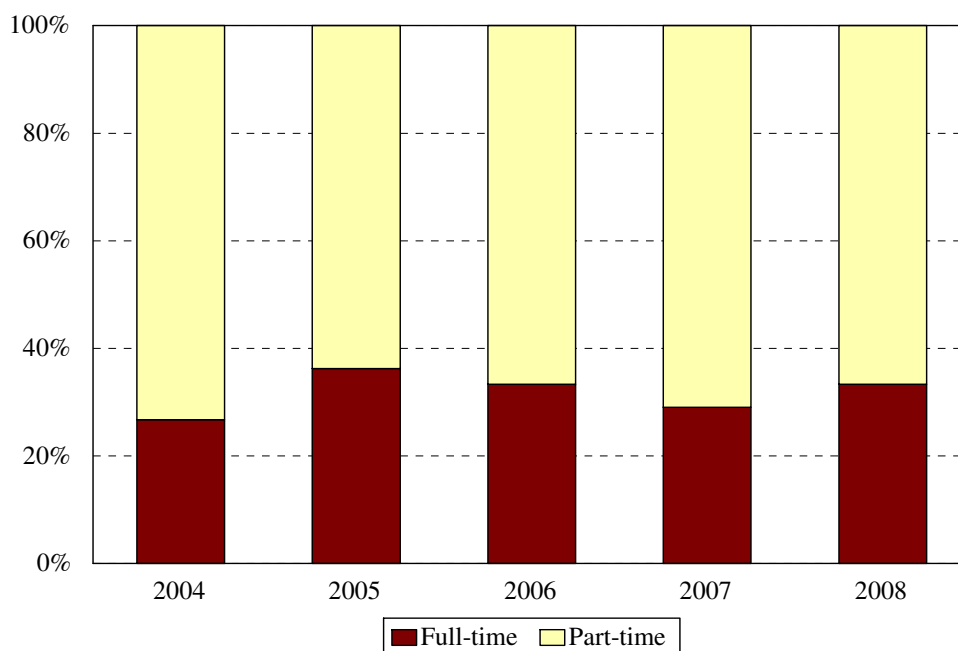
## College of Nursing Enrollment Fall 2004 to Fall 2008



Award	Program	Code	Year				
			2004	2005	2006	2007	2008
BS	Accelerated Nursing	NACC	38	47	50	61	46
BS	RN Completion	RNBS	166	147	132	104	134
	Non-matriculated	000	0	2	6	0	
	<b>Total Undergraduates</b>		<b>204</b>	<b>196</b>	<b>188</b>	<b>165</b>	<b>180</b>
CAS	Family Nurse Practitioner	FNPC	1	2	3	1	3
CAS	Women's Nurse Practitioner	930	1				
MS	Clinical Nurse Specialist	CNSM				31	15
MS	Clinical Nurse Spec. Adult	CNSA	14	23	30		15
MS	Clinical Nurse Spec. HRMI	CNSH	5	2	6		2
MS	Family Nurse Practitioner	FNPM	61	77	89	97	120
MS	Nurse Anesthesia: KCH	940	40	36	37		
MS	Nurse Anesthesia: Harlem	941	36	25	14		
MS	Nurse Anesthesia	NRAN				32	15
MS	Nurse Midwifery Completion	950					
MS	Nurse Midwifery	966	5	9	11		
MS	Nurse Midwifery	NRMS				17	15
MS	Women's Nurse Practitioner	WNPM	5	5	12	13	19
	Non-matriculated	999	13	0	0	2	3
	<b>Total Graduate</b>		<b>181</b>	<b>179</b>	<b>202</b>	<b>193</b>	<b>207</b>
	<b>Total</b>		<b>385</b>	<b>375</b>	<b>390</b>	<b>358</b>	<b>387</b>
	Change from previous year		-10%	-3%	4%	-8%	8%

College of Nursing totals reflect the deactivation of the Generic Nursing program, beginning in 1997.

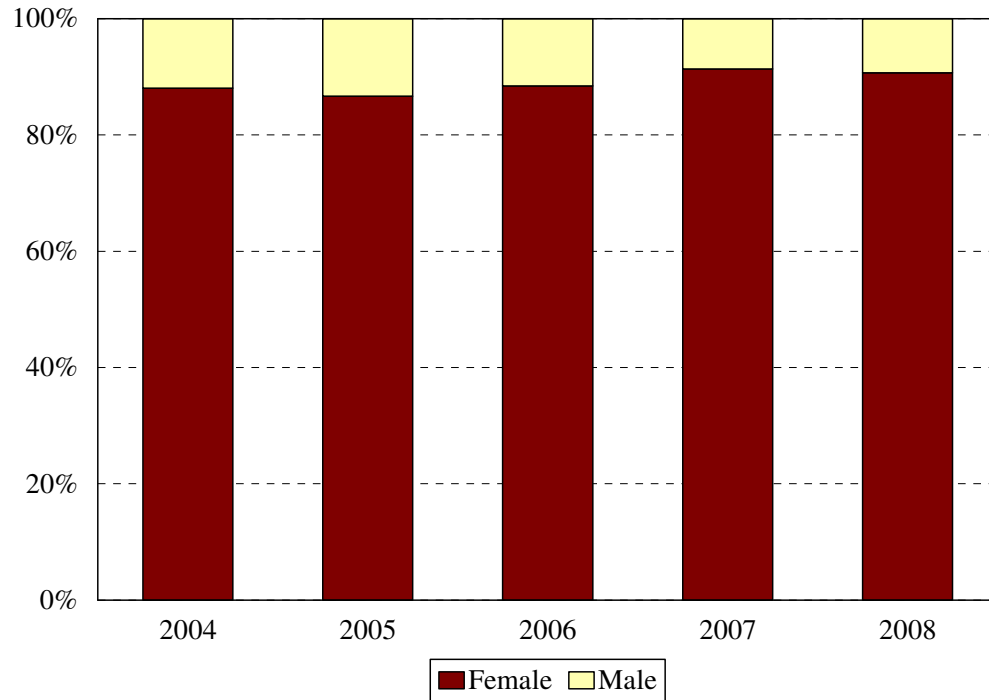
College of Nursing  
Enrollment by Full- and Part-time Status  
Fall 2004 to Fall 2008



Program	Code	Year								
		2004			2005			2006		
		FT	PT	%FT	FT	PT	%FT	FT	PT	%FT
Accelerated Nursing	NACC	33	5	87%	46	1	98%	39	11	78%
RN Completion BS	RNBS	19	147	11%	30	117	20%	31	101	23%
Non-matriculated	000				0	2	0%	0	6	0%
<b>Total Undergraduates</b>		<b>52</b>	<b>152</b>	<b>25%</b>	<b>76</b>	<b>120</b>	<b>39%</b>	<b>70</b>	<b>118</b>	<b>37%</b>
Family Nurse Practitioner CAS	FNPC	0	1	0%	0	2		2	1	67%
Women's Nurse Practitioner CAS	930	0	1	0%						
Clinical Nurse Specialist MS	CNSM									
Clinical Nurse Spec. Adult MS	901	0	14	0%	4	19	17%	5	25	17%
Clinical Nurse Spec. HRMI MS	902	0	5	0%	0	2	0%	3	3	50%
Family Nurse Practitioner MS	FNPM	10	51	16%	16	61	21%	24	65	27%
Nurse Anesthesia MS: Kings	940	20	20	50%	20	16	56%	13	24	35%
Nurse Anesthesia MS: Harlem	941	19	17	53%	14	11	56%	2	12	14%
Nurse Anesthesia MS	NRAN									
Nurse Midwifery Completion MS	950									
Nurse Midwifery: RN MS	966	2	3	40%	5	4	56%	7	4	64%
Nurse Midwifery MS	NRMS									
Women's Nurse Practitioner MS	WNPM	0	5	0%	1	4	20%	4	8	33%
Non-matriculated graduate	999	0	13	0%						
<b>Total Graduate</b>		<b>51</b>	<b>130</b>	<b>28%</b>	<b>60</b>	<b>119</b>	<b>34%</b>	<b>60</b>	<b>142</b>	<b>30%</b>
<b>Total</b>		<b>103</b>	<b>282</b>	<b>27%</b>	<b>136</b>	<b>239</b>	<b>36%</b>	<b>130</b>	<b>260</b>	<b>33%</b>
Change from previous year				-5%			9%			-3%

Program	Code	Year					
		2007			2008		
		FT	PT	%FT	FT	PT	%FT
Accelerated Nursing	NACC	55	6	90%	40	6	87%
RN Completion BS	RNBS	24	80	23%	18	116	13%
Non-matriculated	000	0	0	0%			
<b>Total Undergraduates</b>		<b>79</b>	<b>86</b>	<b>48%</b>	<b>58</b>	<b>122</b>	<b>32%</b>
Family Nurse Practitioner CAS	FNPC	0	1	0%	0	3	0%
Women's Nurse Practitioner CAS	930						
Clinical Nurse Specialist MS	CNSM	4	27	13%	2	13	13%
Clinical Nurse Spec. Adult MS	901				0	15	0%
Clinical Nurse Spec. HRMI MS	902				2	0	100%
Family Nurse Practitioner MS	FNPM	16	81	16%	28	92	23%
Nurse Anesthesia MS: Kings	940						
Nurse Anesthesia MS: Harlem	941						
Nurse Anesthesia MS	NLAN	14	18	44%	5	10	33%
Nurse Midwifery Completion MS	950						
Nurse Midwifery: RN MS	966						
Nurse Midwifery MS	NRMS	9	8	53%	9	6	60%
Women's Nurse Practitioner MS	WNPM	1	12	8%	3	16	16%
Non-matriculated	999	0	2	0%	0	3	0%
<b>Total Graduate</b>		<b>44</b>	<b>149</b>	<b>91%</b>	<b>49</b>	<b>158</b>	<b>24%</b>
<b>Total</b>		<b>123</b>	<b>235</b>	<b>34%</b>	<b>107</b>	<b>280</b>	<b>28%</b>
Change from previous year				1%			-6%

College of Nursing  
Enrollment by Gender  
Fall 2004 to Fall 2008

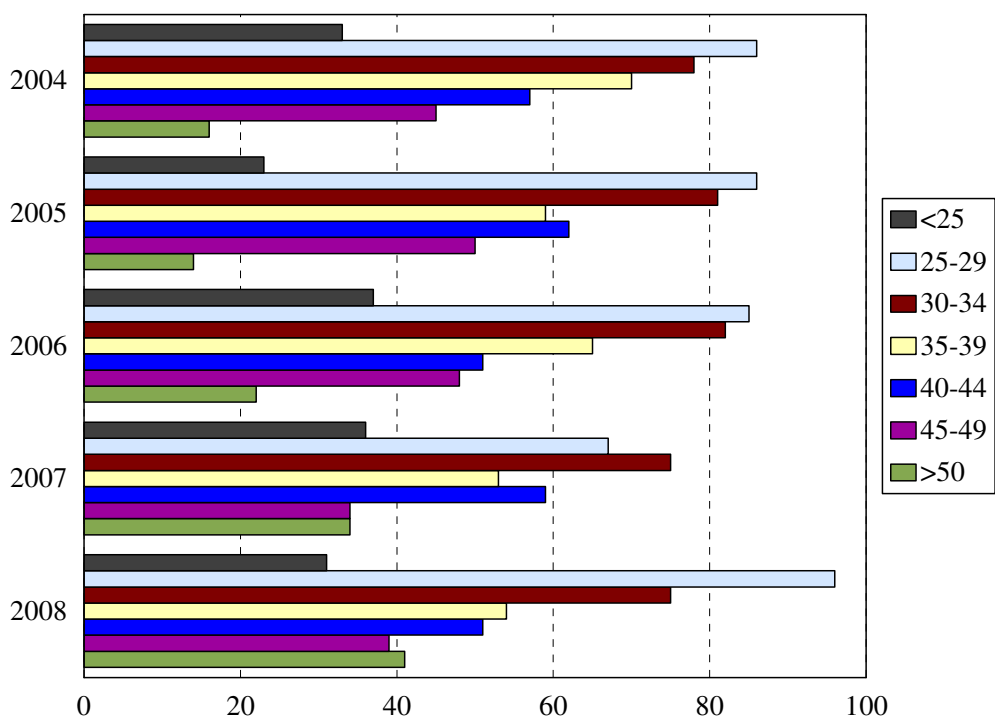


Gender	Year				
	2004	2005	2006	2007	2008
Female	339	325	345	327	351
Male	46	50	45	31	36
% Female	88%	87%	88%	91%	91%
<b>Total</b>	<b>385</b>	<b>375</b>	<b>390</b>	<b>358</b>	<b>387</b>

COLLEGE OF NURSING  
ENROLLMENT BY GENDER

Program	Code	2004		2005		2006		2007		2008	
		F	M	F	M	F	M	F	M	F	M
Accelerated Nursing BS	NACC	34	4	38	9	42	8	54	7	37	9
RN Completion BS	RNBS	155	11	138	9	122	10	98	6	125	9
Non-matriculated	000			1	1	5	1	0	0		
<b>Total Undergraduates</b>		<b>189</b>	<b>15</b>	<b>177</b>	<b>19</b>	<b>169</b>	<b>19</b>	<b>152</b>	<b>13</b>	<b>162</b>	<b>18</b>
Family Nurse Practitioner CAS	FNPC	1	0	2	0	3	0	1	0	3	0
Women's Nurse Practitioner CAS	930	1	0								
Clinical Nurse Specialist MS	CNSM							29	2	14	1
Clinical Nurse Spec. Adult MS	CNSA	12	2	20	3	27	3			13	2
Clinical Nurse Spec. HRMI MS	CNSH	5	0	2	0	6	0			2	0
Family Nurse Practitioner MS	FNPM	56	5	71	6	82	7	91	6	110	10
Nurse Anesthesia MS: Kings	940	30	10	25	11	26	11				
Nurse Anesthesia MS: Harlem	941	25	11	14	11	9	5				
Nurse Anesthesia MS	NRAN							22	10	10	5
Nurse Midwifery Completion MS	950										
Nurse Midwifery: RN MS	966	5	0	9	0	11	0				
Nurse Midwifery MS	NRMS							17	0	15	0
Women's Nurse Practitioner MS	WNPM	5	0	5	0	12	0	13	0	19	0
Non-matriculated	999	10	3	0	0			2	0	3	0
<b>Total Graduate</b>		<b>150</b>	<b>31</b>	<b>148</b>	<b>31</b>	<b>176</b>	<b>26</b>	<b>175</b>	<b>18</b>	<b>189</b>	<b>18</b>
<b>Total</b>		<b>339</b>	<b>46</b>	<b>325</b>	<b>50</b>	<b>345</b>	<b>45</b>	<b>327</b>	<b>31</b>	<b>351</b>	<b>36</b>
Change from previous year		-13%	9%	-4%	9%	6%	-10%	-5%	-31%	7%	16%

College of Nursing  
Enrollment by Age Level  
Fall 2004 to Fall 2008

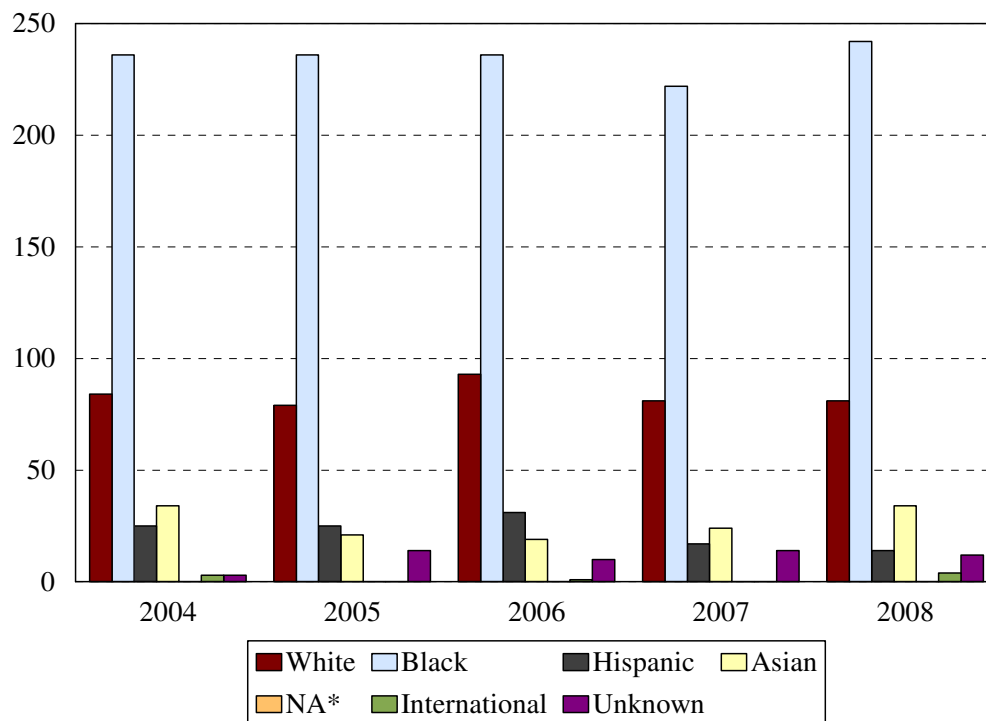


Age	Year									
	2004		2005		2006		2007		2008	
	N	%	N	%	N	%	N	%	N	%
Under 25	33	9%	23	6%	37	9%	36	10%	31	8%
25-29	86	22%	86	23%	85	22%	67	19%	96	25%
30-34	78	20%	81	22%	82	21%	75	21%	75	19%
35-39	70	18%	59	16%	65	17%	53	15%	54	14%
40-44	57	15%	62	17%	51	13%	59	16%	51	13%
45-49	45	12%	50	13%	48	12%	34	10%	39	10%
50 and over	16	4%	14	4%	22	6%	34	10%	41	11%
Age range	18-59		19-55		19-58		21-59		21-60	
Median age	34		34		34		35		34	
<b>Total</b>	<b>385</b>		<b>375</b>		<b>390</b>		<b>358</b>		<b>387</b>	

COLLEGE OF NURSING  
MEDIAN AGE BY PROGRAM

Award	Program	Code	Median Age				
			2004	2005	2006	2007	2008
BS	Accelerated Nursing BS	NACC	28.5	30.0	28.0	29.0	28.0
BS	RN Completion BS	RNBS	35.5	35.0	34.0	35.0	35.5
	Non-matriculated	000		38.0	34.0		
	<b>Total Undergraduate</b>		<b>34.5</b>	<b>33.0</b>	<b>33.0</b>	<b>33.0</b>	<b>33.0</b>
CAS	Family Nurse Practitioner	FNPC	40.0	46.0	40.0	36.0	37.0
CAS	Women's Nurse Practitioner	930	47.0				
MS	Clinical Nurse Specialist	CNSM				39.0	37.0
MS	Clinical Nurse Spec. Adult	901	37.5	37.0	39.5		34.0
MS	Clinical Nurse Spec. HRMI	902	44.0	39.0	28.5		41.0
MS	Family Nurse Practitioner	FNPM	38.0	39.0	38.0	40.0	37.0
MS	Nurse Anesthesia : KCH	940	32.0	34.0	35.0		
MS	Nurse Anesthesia: Harlem	941	30.5	31.0	31.5		
MS	Nurse Anesthesia	NRAN				37.0	33.0
MS	Nurse Midwifery Completion	950					
MS	Nurse Midwifery: RN	966	30.0	31.0	29.0		
MS	Nurse Midwifery	NRMS				31.0	31.0
MS	Women's Nurse Practitioner	WNPM	28.0	32.0	32.0	33.0	29.0
	Non-matriculated	999	37.0			39.0	48.0
	<b>Total Graduate</b>		<b>34.0</b>	<b>35.0</b>	<b>35.0</b>	<b>36.0</b>	<b>36.0</b>
	<b>Total</b>		<b>34.0</b>	<b>34.0</b>	<b>34.0</b>	<b>35.0</b>	<b>34.0</b>
	Change from previous year		-1	0	0	1	-1

College of Nursing  
Enrollment by Ethnic Group  
Fall 2004 to Fall 2008



\*Native American

Ethnic Group (IPEDS Categories)	Year									
	2004		2005		2006		2007		2008	
	N	%	N	%	N	%	N	%	N	%
White	84	22%	79	21%	93	24%	81	23%	81	21%
Black	236	61%	236	63%	236	61%	222	62%	242	63%
Hispanic	25	6%	25	7%	31	8%	17	5%	14	4%
Asian/Pacific Islander	34	9%	21	6%	19	5%	24	7%	34	9%
Native American										
International	3	1%	0	0%	1	<1%			4	1%
Unknown	3	1%	14	4%	10	3%	14	4%	12	3%
% Black and Hispanic		67%		70%		68%		67%		66%
<b>Total</b>	<b>385</b>		<b>375</b>		<b>390</b>		<b>358</b>		<b>387</b>	

- The Integrated Postsecondary Education Data Set (IPEDS) ethnic categories are those used by the U.S. Department of Education.

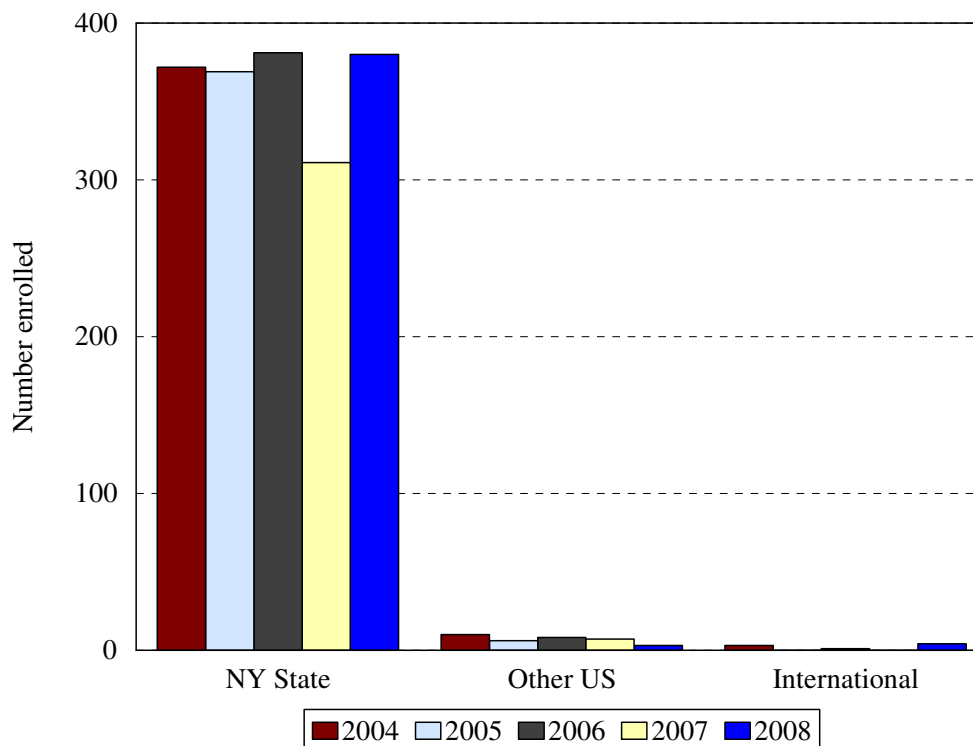


ENROLLMENT BY ETHNIC GROUP BY PROGRAM  
COLLEGE OF NURSING

Program	2004						2005					
	White	Black	Hispanic	Asian	International	Unknown	White	Black	Hispanic	Asian	International	Unknown
NACC	22	7	2	5	2	0	19	20	5	3	0	0
RNBS	14	132	9	7	1	3	11	113	7	6	0	10
000							1	1	0	0	0	0
<b>Total Und.</b>	<b>36</b>	<b>139</b>	<b>11</b>	<b>12</b>	<b>3</b>	<b>3</b>	<b>31</b>	<b>134</b>	<b>12</b>	<b>9</b>	<b>0</b>	<b>10</b>
FNPC	0	1	0	0	0	0	0	2	0	0	0	0
930	0	1	0	0	0	0						
CNSM												
901	0	14	0	0	0	0	2	20	0	1	0	0
902	0	4	1	0	0	0	0	2	0	0	0	0
FNPM	12	42	4	3	0	0	15	51	5	2	0	4
940	20	12	4	4	0	0	19	11	4	2	0	0
941	12	8	4	12	0	0	8	6	4	7	0	0
NRAN												
950												
966	0	5	0	0	0	0	3	6	0	0	0	0
NRMS												
WNPM	1	2	1	1	0	0	1	4	0	0	0	0
999	3	8	0	2	0	0						
<b>Total Grad.</b>	<b>48</b>	<b>97</b>	<b>14</b>	<b>22</b>	<b>0</b>	<b>0</b>	<b>48</b>	<b>102</b>	<b>13</b>	<b>12</b>	<b>0</b>	<b>4</b>
<b>Total</b>	<b>84</b>	<b>236</b>	<b>25</b>	<b>34</b>	<b>3</b>	<b>3</b>	<b>79</b>	<b>236</b>	<b>25</b>	<b>21</b>	<b>0</b>	<b>14</b>

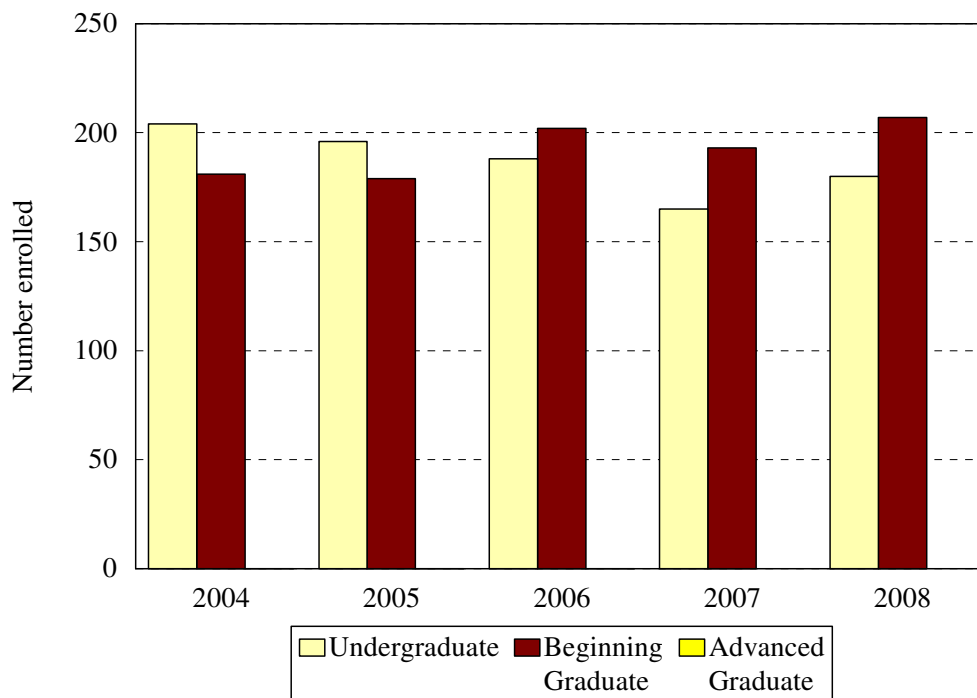
Program	2006						2007						2008					
	White	Black	Hispanic	Asian	International	Unknown	White	Black	Hispanic	Asian	International	Unknown	White	Black	Hispanic	Asian	International	Unknown
NACC	21	21	3	5	0	0	24	27	2	8	0	0	24	12	1	5	1	3
RNBS	29	85	11	4	1	2	21	64	7	5	0	7	27	82	7	12	2	4
000	2	3	1	0	0	0	0	0	0	0	0	0						
<b>Total Undergrad</b>	<b>52</b>	<b>109</b>	<b>15</b>	<b>9</b>	<b>1</b>	<b>2</b>	<b>45</b>	<b>91</b>	<b>9</b>	<b>13</b>	<b>0</b>	<b>7</b>	<b>51</b>	<b>94</b>	<b>8</b>	<b>17</b>	<b>3</b>	<b>7</b>
FNPC	0	2	0	0	0	1	0	1	0	0	0	0	1	1	0	0	0	1
930																		
CNSM							2	27	0	1	0	1	0	10	0	5	0	0
901	3	24	0	1	0	2							2	12	0	0	0	1
902	0	6	0	0	0	0							0	2	0	0	0	0
FNPM	13	66	5	2	0	3	18	70	2	3	0	4	19	88	2	8	1	2
940	14	14	4	4	0	1												
941	6	2	4	2	0	0												
NRAN							9	14	3	5	0	1	1	9	1	3	0	1
950																		
966	4	5	1	1	0	0												
NRMS							5	10	1	1	0	0	2	12	1	0	0	0
WNPM	1	8	2	0	0	0	2	7	2	1	0	1	5	11	2	1	0	0
999							0	2	0	0	0	0	0	3	0	0	0	0
<b>Total Grad.</b>	<b>41</b>	<b>127</b>	<b>16</b>	<b>10</b>	<b>0</b>	<b>8</b>	<b>36</b>	<b>131</b>	<b>8</b>	<b>11</b>	<b>0</b>	<b>7</b>	<b>30</b>	<b>148</b>	<b>6</b>	<b>17</b>	<b>1</b>	<b>5</b>
<b>Total</b>	<b>93</b>	<b>236</b>	<b>31</b>	<b>19</b>	<b>1</b>	<b>10</b>	<b>81</b>	<b>222</b>	<b>17</b>	<b>24</b>	<b>0</b>	<b>14</b>	<b>81</b>	<b>242</b>	<b>14</b>	<b>34</b>	<b>4</b>	<b>12</b>

College of Nursing  
Enrollment by Permanent Residence  
Fall 2004 to Fall 2008



Residency	Year									
	2004		2005		2006		2007		2008	
	N	% of total	N	% of total	N	% of total	N	% of total	N	% of total
New York State	372	96%	369	98%	381	98%	311	87%	380	98%
New York City	308	80%	317	85%	340	87%	304	85%	331	86%
Bronx	10	3%	12	3%	11	3%	16	4%	16	4%
Kings (Brooklyn)	195	51%	206	55%	218	56%	193	54%	211	55%
Manhattan	23	6%	23	6%	19	5%	19	5%	9	2%
Queens	74	19%	70	19%	89	23%	71	20%	87	22%
Richmond (Staten I.)	6	2%	6	2%	3	1%	5	1%	8	2%
Other U.S.	10	3%	6	2%	8	2%	7	2%	3	<1%
International	3	1%	0	0%	1	<1%	0	0%	4	1%
<b>Total</b>	<b>385</b>		<b>375</b>		<b>390</b>		<b>358</b>		<b>387</b>	

College of Nursing  
Enrollment by Student Level  
Fall 2004 to Fall 2008



Note: Beginning graduates include MS degree students and CAS students with few than 24 credits; advanced graduate students include only CAS students with more than 23 credits.

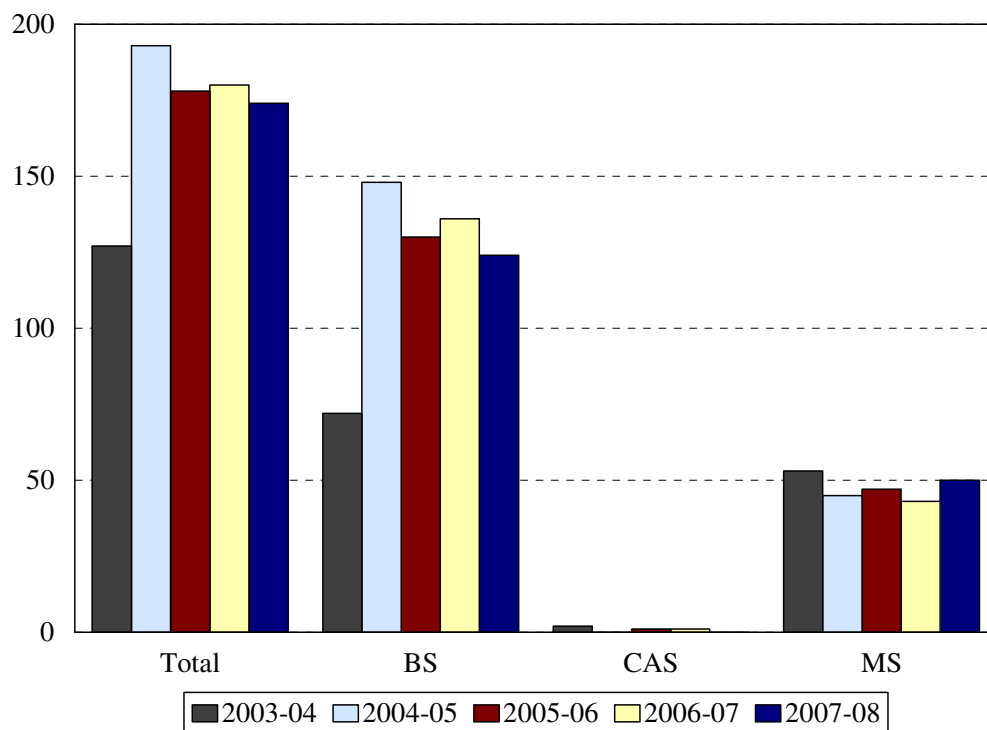
Student Level	Year									
	2004		2005		2006		2007		2008	
	N	%	N	%	N	%	N	%	N	%
Undergraduate	204	53%	196	52%	188	48%	165	46%	180	47%
Beginning Graduate	181	47%	179	48%	202	52%	193	54%	207	53%
Advanced Graduate	0	0%	0	0%	0	0%	0	0%	0	0%
<b>Total</b>	<b>385</b>		<b>375</b>		<b>390</b>		<b>358</b>		<b>387</b>	

ENROLLMENT BY STUDENT LEVEL  
COLLEGE OF NURSING

Program	Code	2004			2005		
		Undergraduates	Beginning Graduates	Advanced Graduates	Undergraduates	Beginning Graduates	Advanced Graduates
Accelerated Nursing BS	NACC	38			47		
RN Completion BS	RNBS	166			147		
Non-matriculated undergrad	000				2		
Family Nurse Practitioner CAS	FNPC		1			2	
Women's Nurse Practitioner CAS	930		1				
Clinical Nurse Specialist MS	CNSM						
Clinical Nurse Spec. Adult MS	901		14			23	
Clinical Nurse Spec. HRMI MS	902		5			2	
Family Nurse Practitioner MS	FNPM		61			77	
Nurse Anesthesia MS: Kings	940		40			36	
Nurse Anesthesia MS: Harlem	941		36			25	
Nurse Anesthesia MS	NRAN						
Nurse Midwifery Completion MS	950						
Nurse Midwifery: RN MS	966		5			9	
Nurse Midwifery MS	NRMS						
Women's Nurse Practitioner MS	WNPM		5				
Non-matriculated	999		13				
<b>Total</b>		<b>204</b>	<b>181</b>		<b>196</b>	<b>179</b>	
Change from previous year		-7%	-13%	-200%	-4%	-1%	

Program	Code	2006			2007			2008		
		Undergraduates	Beginning Graduates	Advanced Graduates	Undergraduates	Beginning Graduates	Advanced Graduates	Undergraduates	Beginning Graduates	Advanced Graduates
Accelerated Nursing BS	NACC	50			61			46		
RN Completion BS	RNBS	132			104			134		
Non-matriculated undergrad	000	6								
Family Nurse Practitioner CAS	FNPC		3			1			3	
Women's Nurse Practitioner CAS	930									
Clinical Nurse Specialist MS	CNSM					31			15	
Clinical Nurse Spec. Adult MS	901		30						15	
Clinical Nurse Spec. HRMI MS	902		6						2	
Family Nurse Practitioner MS	FNPM		89			97			120	
Nurse Anesthesia MS: Kings	940		37							
Nurse Anesthesia MS: Harlem	941		14							
Nurse Anesthesia MS	NRAN					32			15	
Nurse Midwifery Completion MS	950									
Nurse Midwifery: RN MS	966		11							
Nurse Midwifery MS	NRMS					17			15	
Women's Nurse Practitioner MS	WNPM		12			13			19	
Non-matriculated grad	999								3	
<b>Total</b>		<b>188</b>	<b>202</b>		<b>165</b>	<b>193</b>		<b>180</b>	<b>207</b>	
Change from previous year		-4%	13%		-12%	-4%				

Degrees Granted by Level  
College of Nursing  
2003-2004 to 2007-2008



Degrees	Code	Year				
		2003-04	2004-05	2005-06	2006-07	2007-08
Generic-Nursing BS	291					
RN Completion BS	RNBS	72	121		44	82
Accelerated Nursing	NACC		27	130	92	42
Family Nurse Practitioner CAS	FNPC	2	0	1	1	
Women's Nurse Practitioner CAS	930	0	0			
Clinical Nurse Specialist MS	CNSM			1		
Clinical Nurse Spec. Adult MS	CNSA	5	2		7	2
Clinical Nurse Spec. HRMI MS	CNSH		2			1
Family Nurse Practitioner MS	FNPM	22	18	18	13	26
Nurse Anesthesia MS: Kings	940	9	12	26	10	
Nurse Anesthesia MS: Harlem	941	12	10		11	
Nurse Anesthesia MS	NRAN					16
Nurse Midwifery Completion MS	950	0	0	1		
Nurse Midwifery: RN MS	966	4	1		2	
Nurse Midwifery MS	NRMS					3
Women's Nurse Practitioner MS	WNPM	1	0	1		2
<b>Total</b>		<b>127</b>	<b>193</b>	<b>178</b>	<b>180</b>	<b>174</b>
Change from previous year		6%	52%	-8%	1%	-3%

COLLEGE OF NURSING  
DEGREES EARNED BY ETHNIC GROUP

Ethnic Group	Year				
	2003-04	2004-05	2005-06	2006-07	2007-08
White	17	36	39	36	48
% change	-6%	112%	8%	-8%	33%
Black	92	139	103	116	98
% change	8%	51%	-26%	13%	-16%
Hispanic	9	4	7	17	9
% change	44%	-56%	75%	143%	-47%
Asian	7	13	21	10	11
% change	43%	86%	62%	-52%	10%
Native American	0	0	0	0	0
% change					
International	1	0	3	0	0
% change	-400%	-100%		-100%	
Unknown	1	1	5	1	8
% change	-200%	0%	400%	-80%	700%
<b>Total</b>	<b>127</b>	<b>193</b>	<b>178</b>	<b>180</b>	<b>174</b>
Change from previous year	6%	52%	-8%	1%	-3%