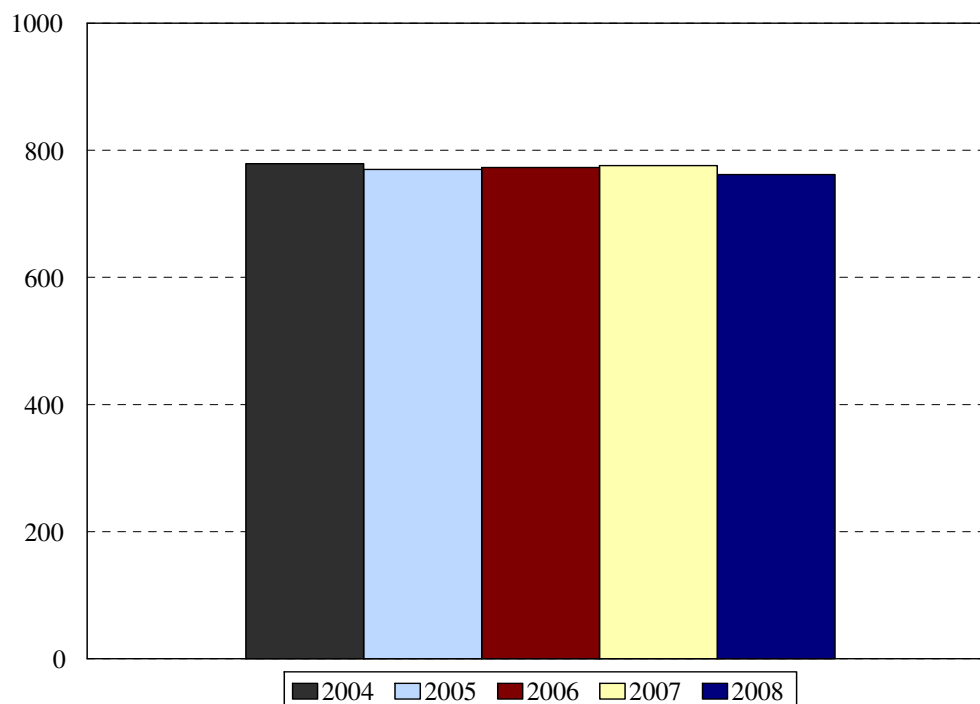


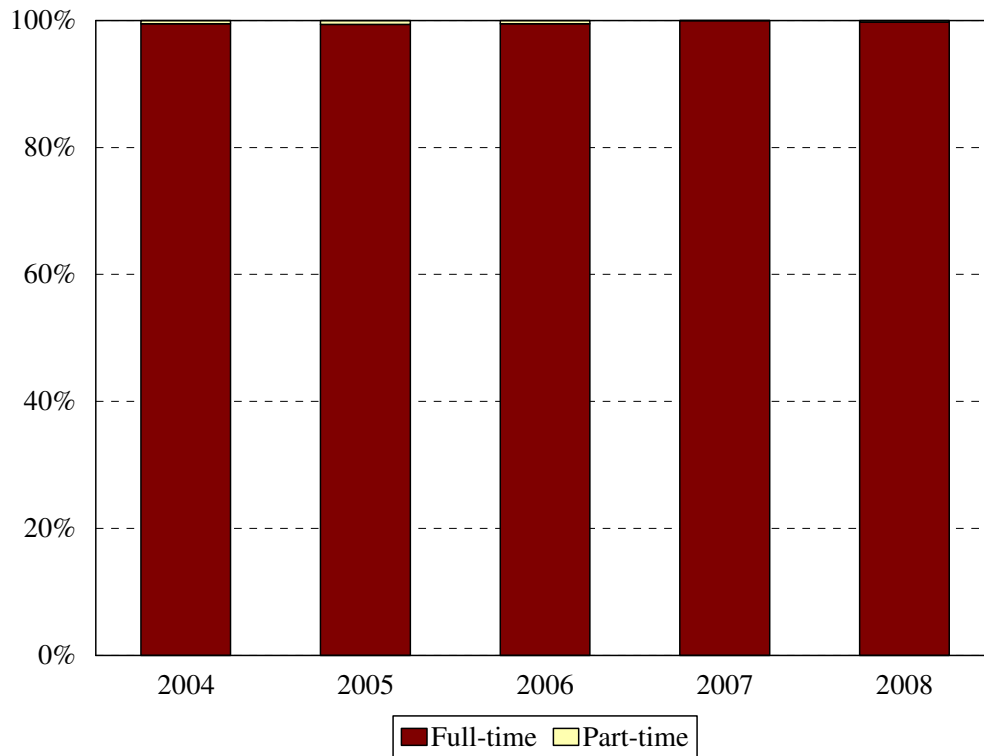
College of Medicine Enrollment MD and MD/MPH Fall 2004 to Fall 2008



College of Medicine MD and MD/MPH	Year				
	2004	2005	2006	2007	2008
New students	172	185	184	170	185
Continuing students	607	585	589	606	577
Total	779	770	773	776	762
Change from previous year	1%	-1%	0%	0%	

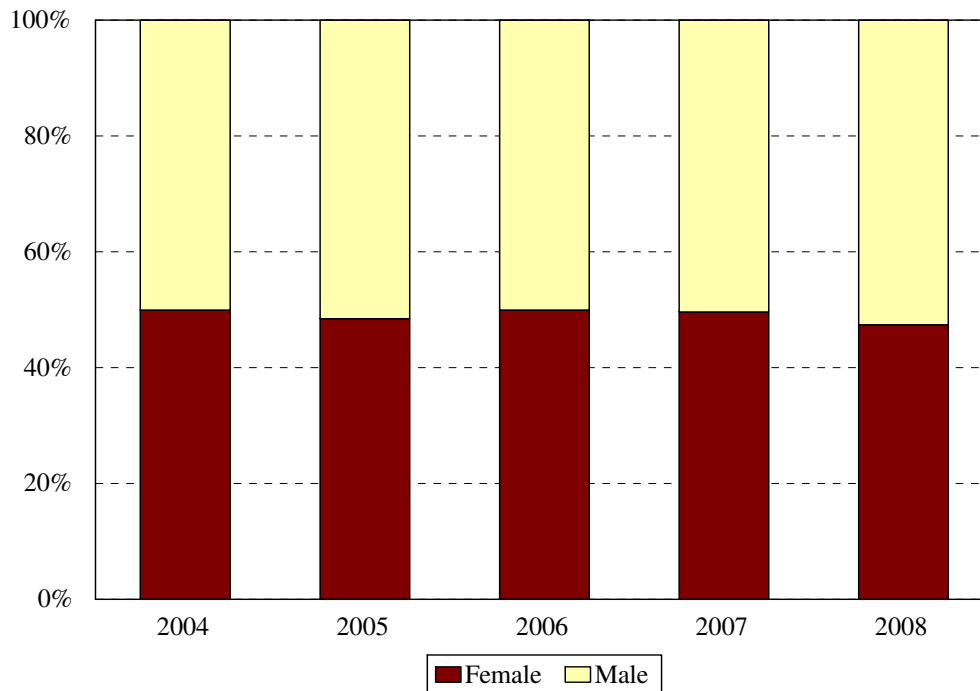
- College of Medicine MD Program totals reflect a planned reduction in entering class size to 180 beginning in 1997 and a planned increase beginning in 2000.
- The total in 2002 includes 6 students concurrently enrolled in the MPH Program, and the total in 2003, 10 students.
- The total in 2005 does not include 2 oral surgeons attending required college of medicine courses.

**College of Medicine: MD and MD/MPH
Enrollment by Full- and Part-time Status
Fall 2004 to Fall 2008**



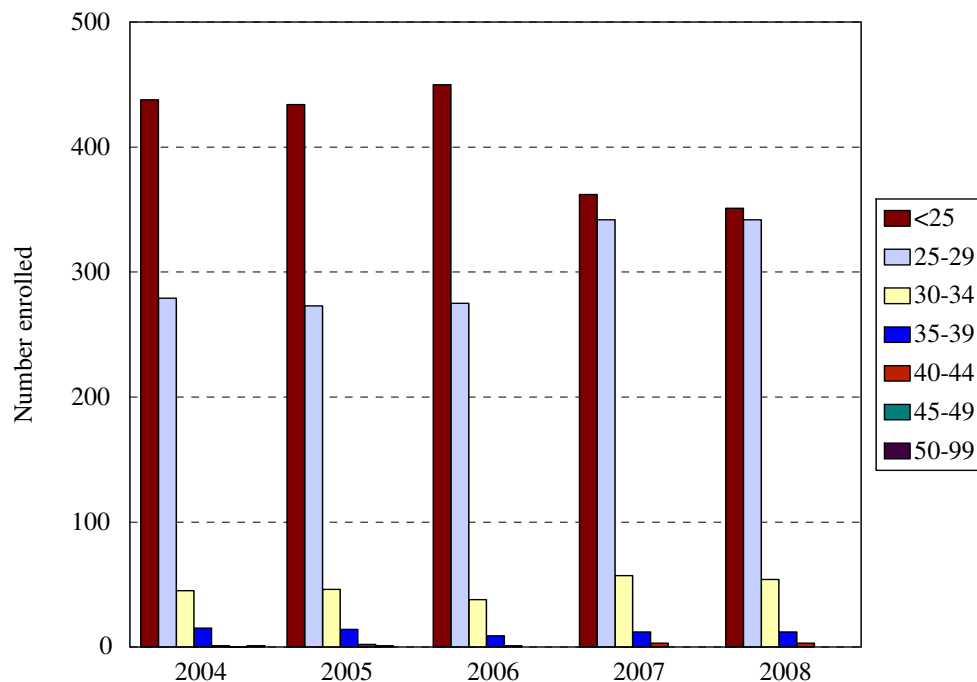
Enrollment Levels	Year				
	2004	2005	2006	2007	2008
Full-time	775	767	769	776	760
Part-time	4	3	4	0	2
% Full-time	99%	99%	99%	100%	99%
Total	779	770	773	776	762

**College of Medicine: MD and MD/MPH
Enrollment by Gender
Fall 2004 to Fall 2008**



Gender	Year			Year			Year			Year			Year		
	2004			2005			2006			2007			2008		
	F	M	%F	F	M	%F	F	M	%F	F	M	%F	F	M	%F
New 1 st year	88	84	51%	92	93	50%	91	93	49%	85	85	50%	87	98	47%
Continuing	301	306	50%	281	304	48%	295	294	50%	300	306	50%	274	303	47%
Total	389	390	50%	373	397	48%	386	387	50%	385	391	50%	361	401	47%
Change from previous year			0%			-2%			2%			0%			-3%

College of Medicine: MD and MD/MPH
Enrollment by Age Level
 Fall 2004 to Fall 2008



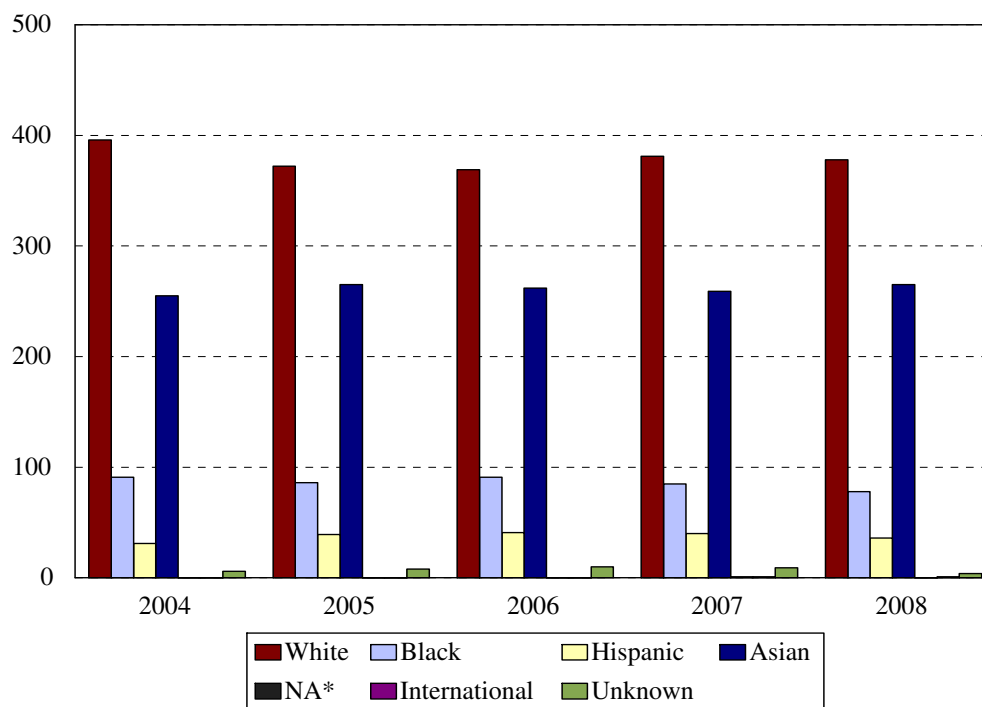
All Medical Students

Age	Year									
	2004		2005		2006		2007		2008	
	N	%	N	%	N	%	N	%	N	%
Under 25	438	56%	434	56%	450	58%	362	47%	351	46%
25-29	279	36%	273	35%	275	36%	342	44%	342	45%
30-34	45	6%	46	6%	38	5%	57	7%	54	7%
35-39	15	2%	14	2%	9	1%	12	2%	12	2%
40-44	1	<1%	2	<1%	1	<1%	3	<1%	3	<1%
45-49	0	0%	1	<1%						
50 and over	1	<1%								
Median age	24		25		24		22		23	
Age range	20-55		20-46		20-40		19-43		20-40	
Total	779		770		773		776		762	

**New First Year Medical Students
Enrollment by Age Level**

Age	Year									
	2004		2005		2006		2007		2008	
	N	%	N	%	N	%	N	%	N	%
Under 25	144	84%	144	78%	139	76%	127	75%	135	73%
25-29	20	12%	36	19%	38	21%	37	22%	44	24%
30-34	6	3%	5	3%	5	3%	2	1%	4	2%
35-39	2	1%	0	0%	2	1%	3	2%	1	<1%
40-44			0	0%	0	0%	1	1%	1	<1%
45-49			0	0%						
50 and over										
Median age	22		23		23		23		23	
Age range	20-38		20-34		20-36		19-43		20-40	
Total	172		185		184		170		185	

**College of Medicine: MD and MD/MPH
Enrollment by Ethnic Group
Fall 2004 to Fall 2008**



*Native American students numbered 0 in 2003, 0 in 2004, 0 in 2005, 0 in 2006 and 1 in 2007.

All Medical Students

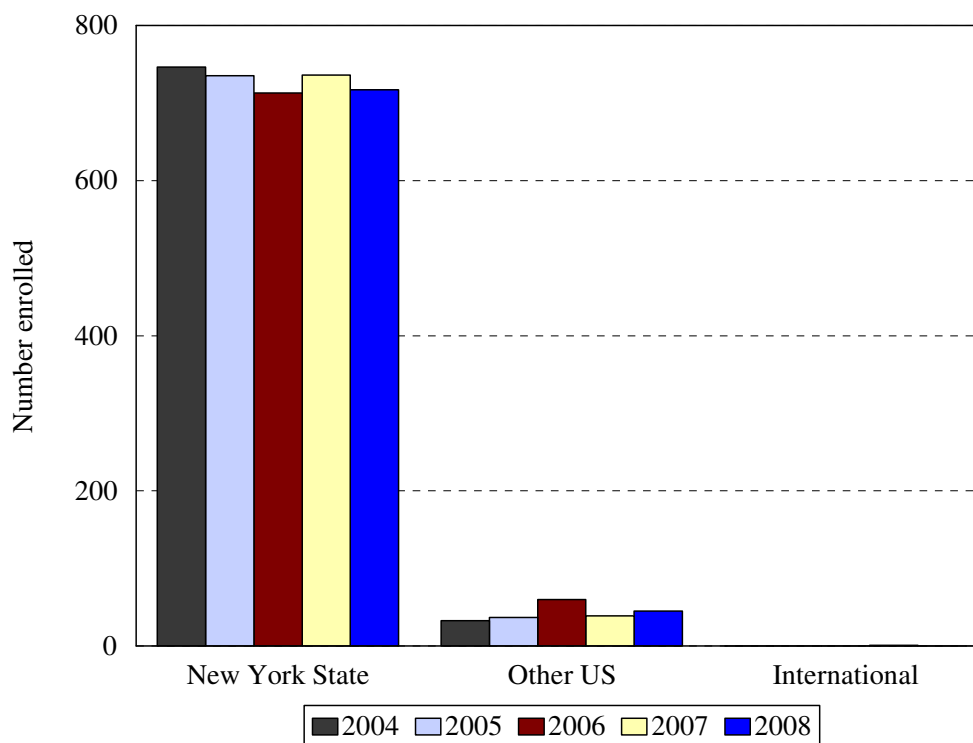
Ethnic Group (IPEDS Categories)	Year									
	2004		2005		2006		2007		2008	
	N	%	N	%	N	%	N	%	N	%
White	396	51%	372	48%	369	48%	381	49%	378	50%
Black	91	12%	86	11%	91	12%	85	11%	78	10%
Hispanic	31	4%	39	5%	41	5%	40	5%	36	5%
Asian/Pacific Islander	255	33%	265	34%	262	34%	259	33%	265	35%
Native American	0	0%	0	0%	0	0%	1	<1%	0	
International	0	0%	0	0%	0	0%	1	<1%	1	<1%
Unknown	6	1%	8	1%	10	1%	9	1%	4	1%
<i>Black and Hispanic</i>	122	16%	125	16%	132	17%	125	16%	114	15%
Total	779		770		773		776		762	

- The Integrated Postsecondary Education Data Set (IPEDS) ethnic categories are those used by the U.S. Department of Education.

**New First Year Medical Students
Enrollment by Ethnic Group**

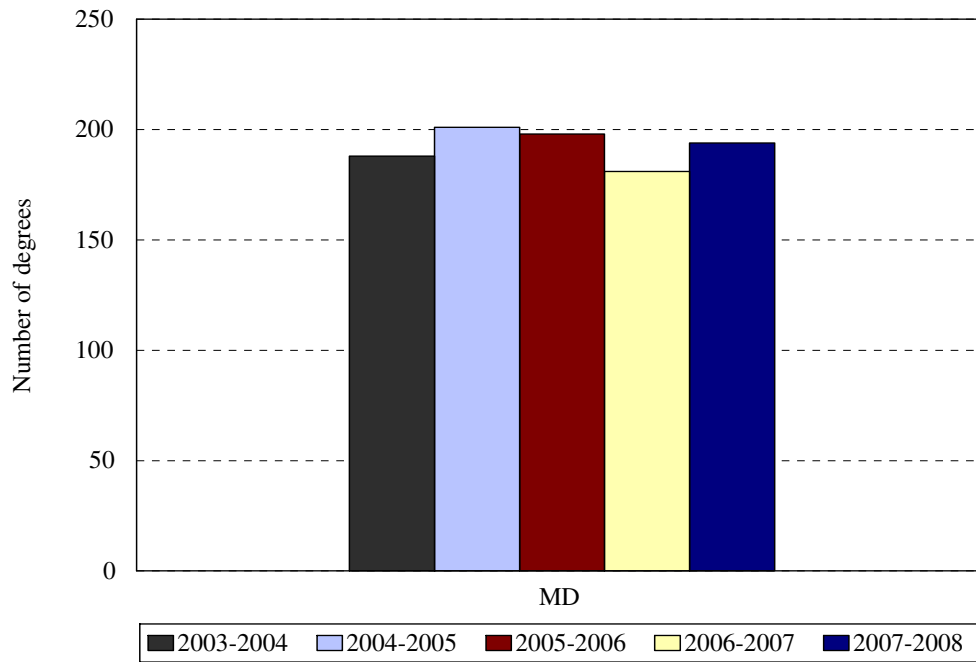
Ethnic Group (IPEDS Categories)	Year									
	2004		2005		2006		2007		2008	
	N	%	N	%	N	%	N	%	N	%
White	98	57%	88	48%	92	50%	84	49%	97	52%
Black	17	10%	19	10%	17	9%	17	10%	16	9%
Hispanic	3	2%	11	6%	7	4%	12	7%	6	3%
Asian/Pacific Islander	54	31%	65	35%	65	35%	51	30%	66	36%
Native American							1	1%		
International										
Unknown			2	1%	3	2%	5	3%	0	0%
<i>Black and Hispanic</i>	20	12%	30	16%	24	13%	29	17%	22	12%
Total	172		185		184		170		185	

**College of Medicine: MD and MD/MPH
Enrollment by Permanent Residence**
Fall 2004 to Fall 2008



Residency	Year									
	2004		2005		2006		2007		2008	
	N	% of total	N	% of total	N	% of total	N	% of total	N	% of total
New York State	746	96%	734	95%	713	92%	736	95%	717	94%
New York City	490	63%	468	61%	459	59%	476	61%	476	62%
Bronx	10	1%	12	2%	12	2%	13	2%	20	3%
Kings (Brooklyn)	229	29%	217	28%	227	29%	259	33%	264	35%
Manhattan	74	10%	74	10%	68	9%	59	8%	52	7%
Queens	140	18%	133	17%	125	16%	119	15%	118	15%
Richmond (Staten I.)	37	5%	32	4%	27	3%	26	3%	22	3%
Other U.S.	33	4%	37	5%	60	8%	39	5%	45	6%
International	0	0%	0	0%	0	0%	1	<1%	0	0%
Total	779		770		773		776		762	

**College of Medicine: MD and MD/MPH
Degrees Granted by Level**
Fiscal Years 2003-2004 to 2007-2008



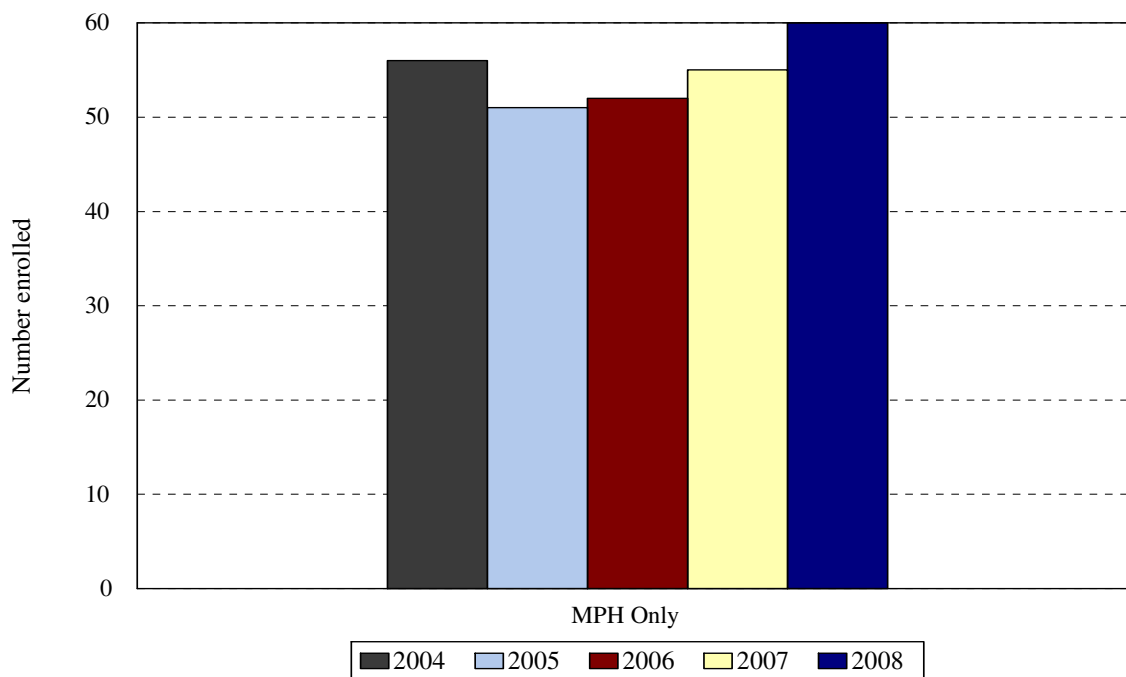
Degrees granted during July 1 (year 1) to June 30 (year 2) periods.

Degree Level	Year				
	2003-2004	2004-2005	2005-2006	2006-2007	2007-2008
Doctor of Medicine	188	201	198	181	194
Change from previous year	-6%	7%	-1%	-9%	7%

DEGREES EARNED BY ETHNIC GROUP
COLLEGE OF MEDICINE

Ethnic Group	Year				
	2003- 2004	2004- 2005	2005- 2006	2006- 2007	2007- 2008
White	91	104	93	86	97
% change	-29%	14%	-11%	-8%	11%
Black	23	25	22	20	23
% change	9%	9%	-12%	-9%	13%
Hispanic	7	4	10	12	10
% change	-29%	-43%	150%	20%	-20%
Asian	65	67	70	61	63
% change	20%	3%	4%	-13%	3%
Native American	0	0	0	0	
International	0	0	0	0	
% change					
Unknown	2	1	3	2	1
% change		-50%	200%	-33%	-100%
Total	188	201	198	181	194
Change from previous year	-6%	7%	-1%	-9%	7%

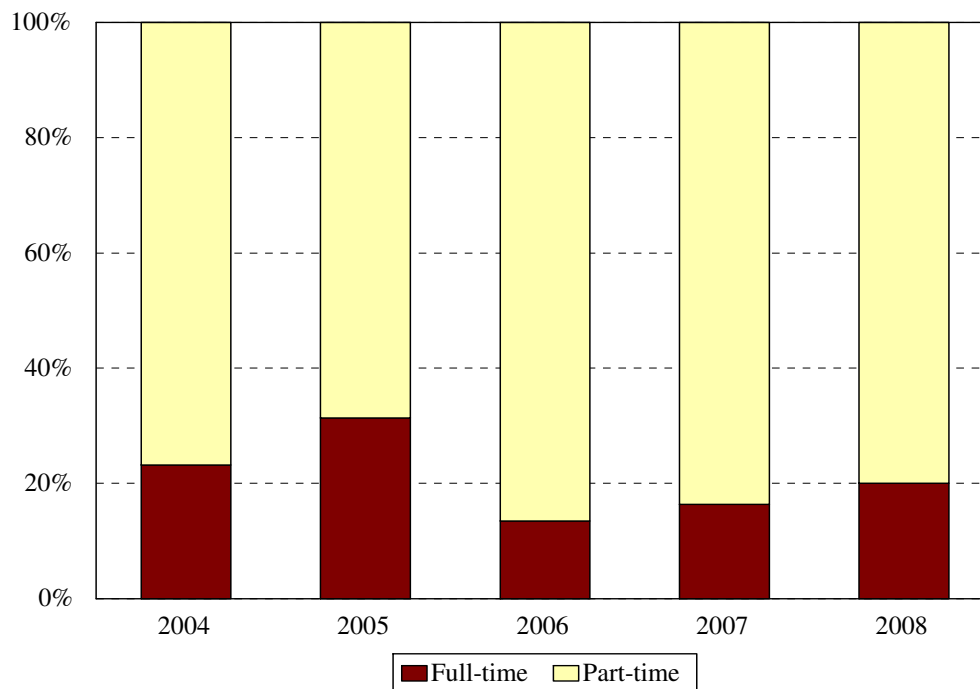
Masters of Public Health Fall 2004 to Fall 2008



College of Medicine MD and MD/MPH	Year				
	2004	2005	2006	2007	2008
New students	20	38	31	39	36
Continuing students	36	13	21	16	24
Total	56	51	52	55	60
Change from previous year	41%	-9%	2%	6%	8%

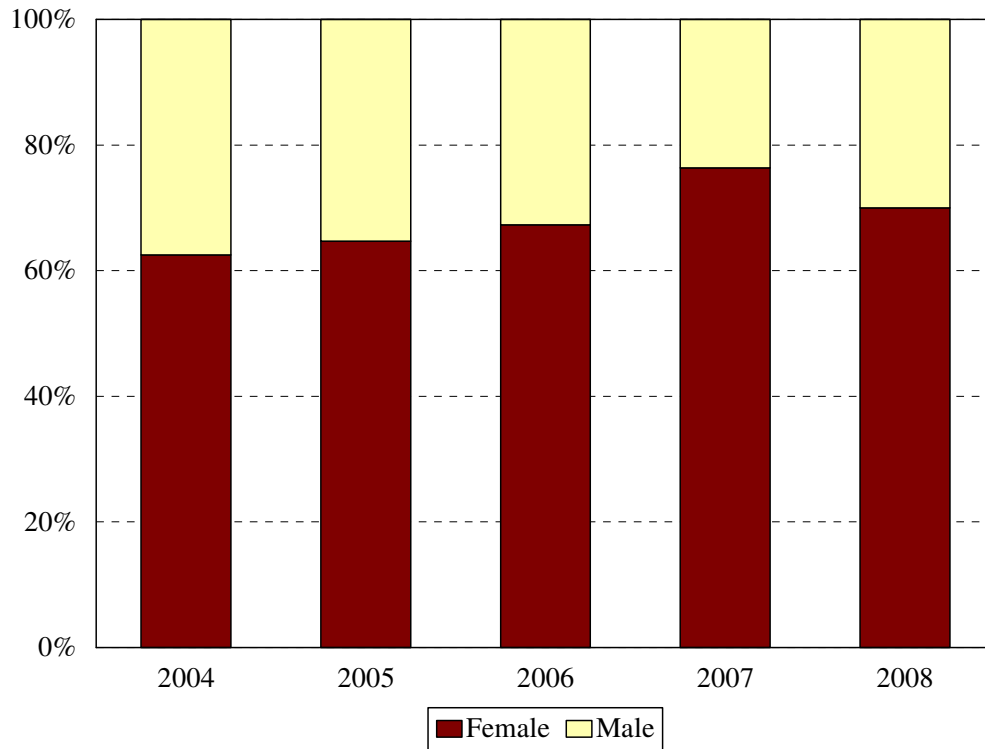
The totals do **not** include students concurrently enrolled in the MD/MPH Programs: 6 in 2002, 10 in 2003, 16 in 2004, 17 in 2005, and 17 in 2006.

**Masters of Public Health
Enrollment by Full- and Part-time Status
Fall 2004 to Fall 2008**



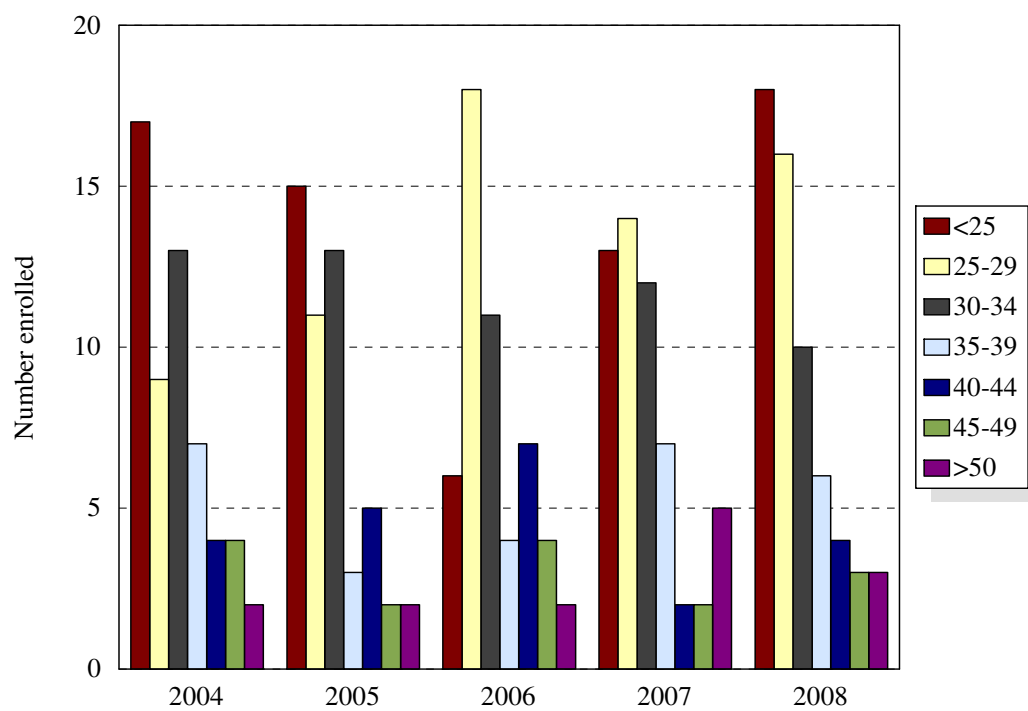
Enrollment Levels	Year				
	2004	2005	2006	2007	2008
Full-time	13	16	7	9	12
Part-time	43	35	45	46	48
% Full-time	23%	31%	13%	16%	20%
Total	56	51	52	55	60

Masters of Public Health Enrollment by Gender Fall 2004 to Fall 2008



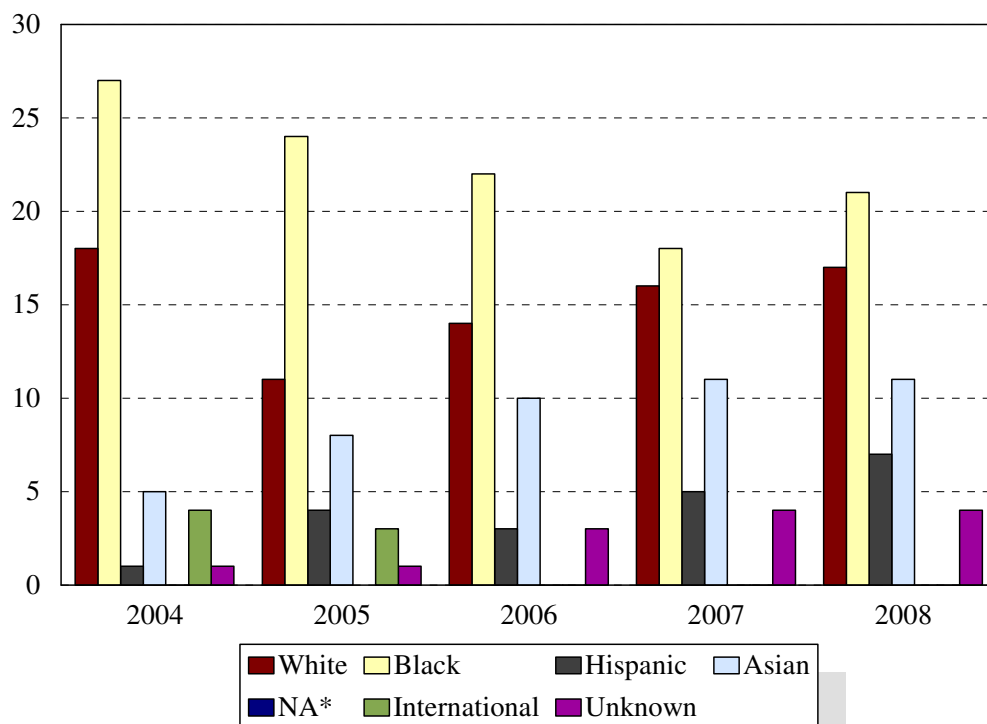
Gender	Year			Year			Year			Year			Year		
	2004			2005			2006			2007			2008		
	F	M	%F	F	M	%F	F	M	%F	F	M	%F	F	M	%F
Total	35	21	63%	33	18	65%	35	17	67%	42	13	76%	42	18	70%
Change from previous year			2%			2%			3%			9%			-8%

Masters of Public Health Enrollment by Age Level Fall 2004 to Fall 2008



Age	Year									
	2004		2005		2006		2007		2008	
	N	%	N	%	N	%	N	%	N	%
Under 25	17	30%	15	29%	6	12%	13	24%	18	30%
25-29	9	16%	11	22%	18	35%	14	25%	16	27%
30-34	13	23%	13	25%	11	21%	12	22%	10	17%
35-39	7	13%	3	6%	4	8%	7	13%	6	10%
40-44	4	7%	5	10%	7	13%	2	4%	4	7%
45-49	4	7%	2	4%	4	8%	2	4%	3	5%
50 and over	2	4%	2	4%	2	4%	5	9%	3	5%
Median age	31		31		30		30		29	
Age range	21-53		21-54		21-55		22-60		22-61	
Total	56		51		52		55		60	

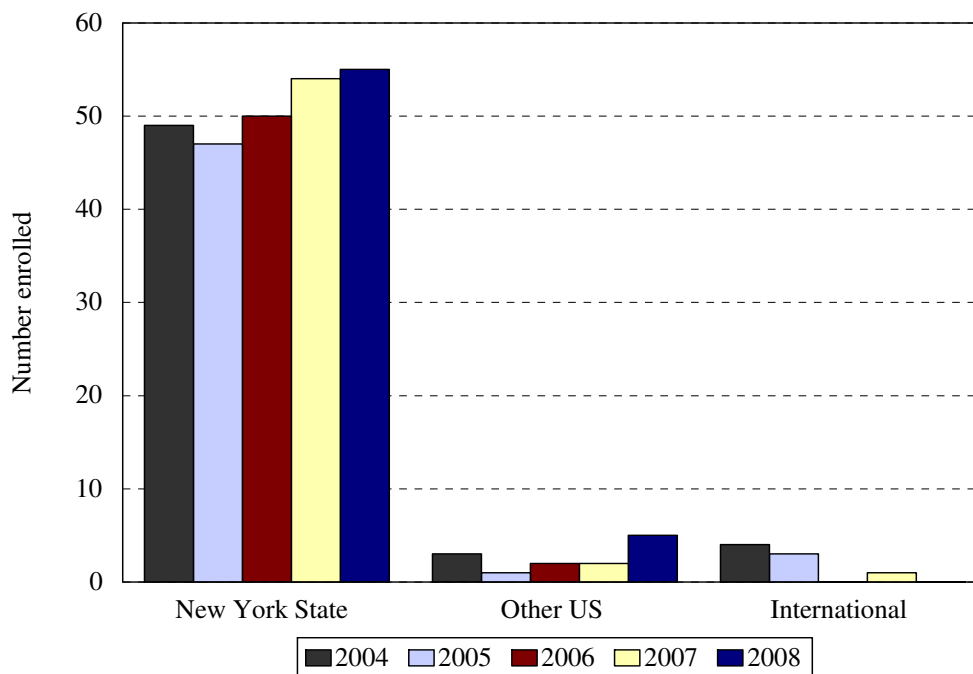
Masters of Public Health Enrollment by Ethnic Group Fall 2004 to Fall 2008



Ethnic Group (IPEDS Categories)	Year									
	2004		2005		2006		2007		2008	
	N	%	N	%	N	%	N	%	N	%
White	18	32%	11	22%	14	27%	16	29%	17	31%
Black	27	48%	24	47%	22	42%	18	33%	21	38%
Hispanic	1	2%	4	8%	3	6%	5	9%	7	13%
Asian/Pacific Islander	5	9%	8	16%	10	19%	11	20%	11	20%
Native American	0	0%	0	0%	0	0%	0	0%	0	0%
International	4	7%	3	6%	0	0%	0	0%	0	0%
Unknown	1	2%	1	2%	3	6%	4	7%	4	7%
<i>Black and Hispanic</i>	28	50%	28	55%	25	48%	23	42%	28	51%
Total	56		51		52		55		60	

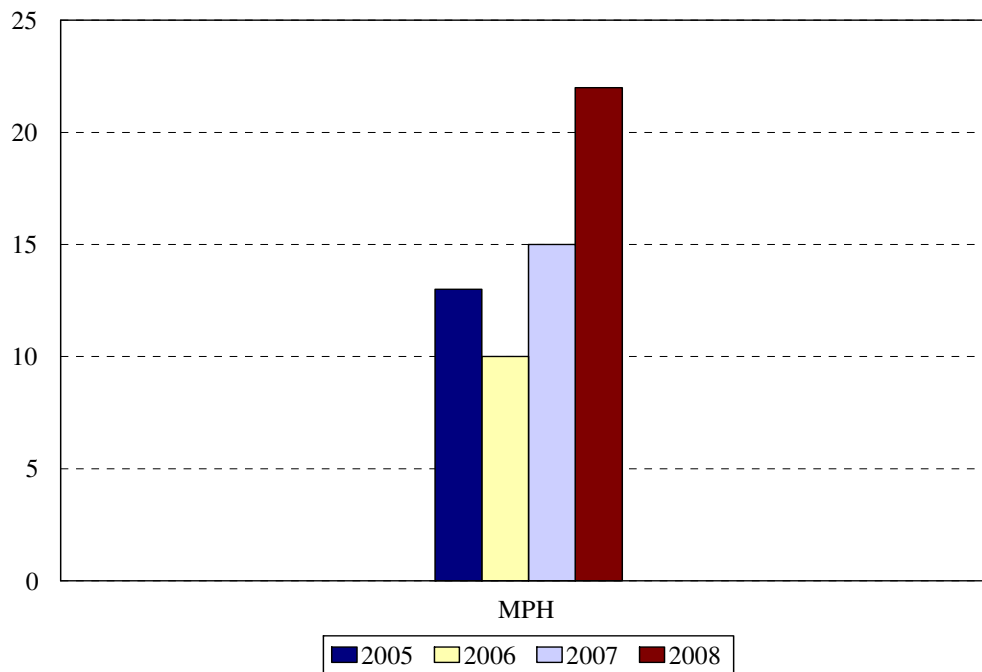
- The Integrated Postsecondary Education Data Set (IPEDS) ethnic categories are those used by the U.S. Department of Education.

College of Medicine: MPH Only
Enrollment by Permanent Residence
 Fall 2004 to Fall 2008



Residency	Year									
	2004		2005		2006		2007		2008	
	N	% of total	N	% of total	N	% of total	N	% of total	N	% of total
New York State	49	88%	47	92%	50	96%	54	98%	55	92%
New York City	40	71%	40	78%	39	75%	42	76%	44	73%
Bronx	2	4%	1	2%	1	2%	2	4%	1	2%
Kings (Brooklyn)	26	46%	28	55%	28	54%	25	45%	27	45%
Manhattan	4	7%	5	10%	3	6%	2	4%	4	7%
Queens	6	11%	5	10%	5	10%	8	15%	9	15%
Richmond (Staten I.)	2	4%	1	2%	2	4%	3	5%	3	5%
Other U.S.	3	5%	1	2%	2	4%	2	4%	5	8%
International	4	7%	3	6%			1	2%	0	0%
Total	56		51		52		55		60	

**College of Medicine: MPH
Degrees Granted by Level**
Fiscal Years 2003-2004 to 2007-2008



Degree Level	Year				
	2003-2004	2004-2005	2005-2006	2006-2007	2007-2008
MPH		13	10	15	22
Change from previous year			-23%	50%	47%

DEGREES EARNED BY ETHNIC GROUP
MASTERS IN PUBLIC HEALTH

Ethnic Group	Year				
	2003- 2004	2004- 2005	2005- 2006	2006- 2007	2007- 2008
White		5	2	4	4
% change			-80%	100%	0%
Black		4	4	8	9
% change			0%	100%	13%
Hispanic		0	2	1	0
% change				-50%	0%
Asian		2	2	2	8
% change			0%	0%	300%
Native American		0	0	0	0
			0%	0%	0%
International		2	0	0	0
% change			-100%	0%	0%
Unknown		0	0	0	1
% change			0%	0%	
Total		13	10	15	22
Change from previous year			-23%	50%	47%