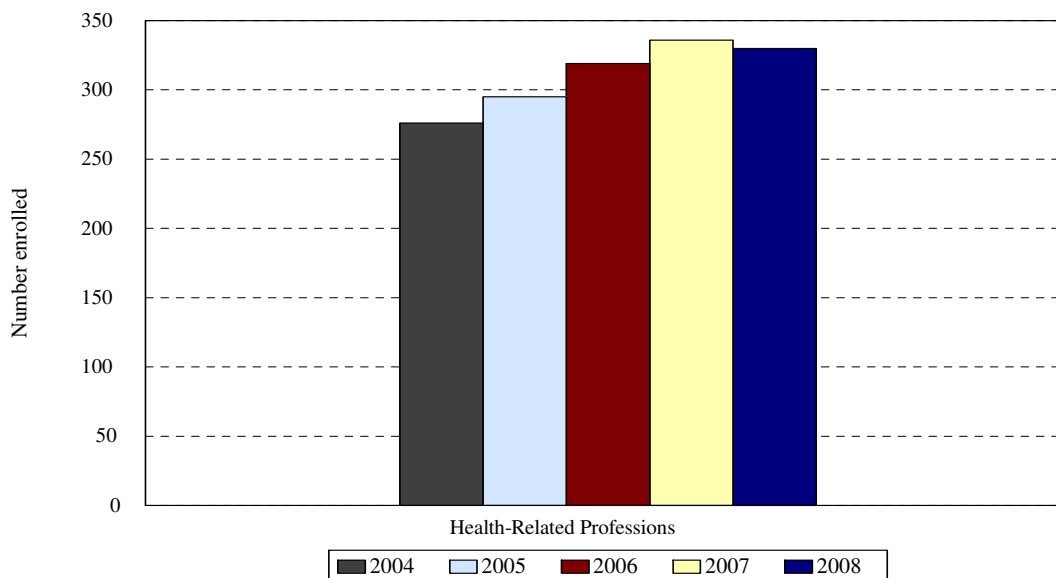
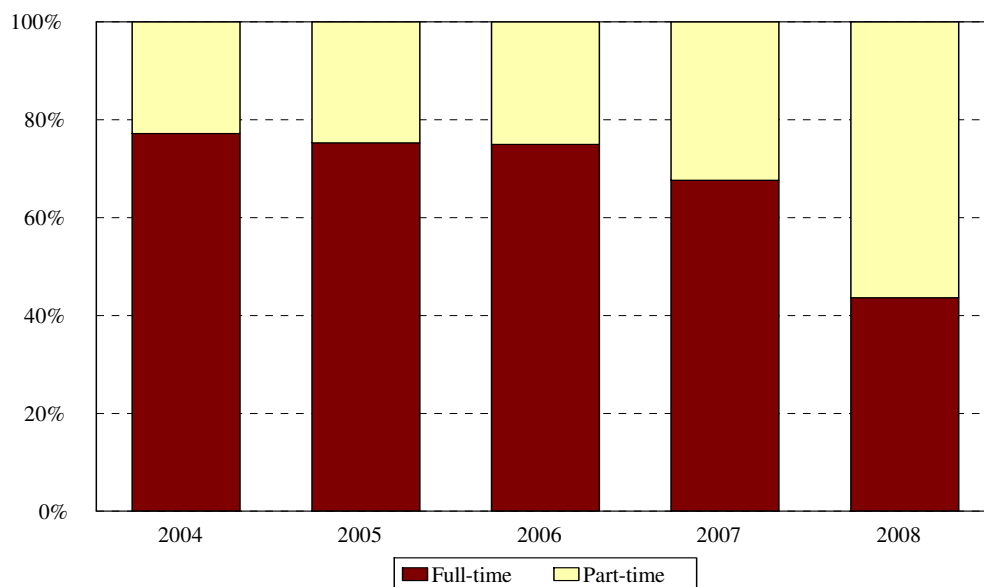


College of Health Related Professions Enrollment Fall 2004 to Fall 2008



| Award | Program | Code | Year | | | | |
|-------|---------------------------------|------|------------|------------|------------|------------|------------|
| | | | 2004 | 2005 | 2006 | 2007 | 2008 |
| BS | Diagnostic Medical Imaging | DIMI | 47 | 48 | 50 | 51 | 52 |
| BS | Physical Therapy (BS and BS/MS) | PTBS | 35 | 32 | 17 | 26 | 21 |
| BS | Physician's Assistant | PABS | 68 | 69 | 75 | 66 | 71 |
| | Non-matriculated | 000 | 0 | 0 | 0 | 1 | 0 |
| | Total Undergraduate | | 150 | 149 | 162 | 144 | 144 |
| CAS | Midwifery | MWIC | | | | | 1 |
| CAS | Midwifery- Direct Entry | MWDC | | | | | 1 |
| CERT | Midwifery- RN | 965 | 1 | 1 | 3 | | |
| CERT | Nurse Midwifery | MWNC | | | | | |
| MS | Midwifery- Direct Entry | MWDM | 13 | 8 | 4 | | 3 |
| MS | Midwifery: RN | 968 | 7 | 9 | 7 | | |
| MS | Midwifery (MS completion) | MWCM | 3 | 0 | 2 | | 3 |
| MS | Midwifery | MWIF | | | | 17 | 16 |
| MS | Occupational Therapy | OTMS | 66 | 80 | 84 | 94 | 90 |
| MS | Physical Therapy (BS and BS/MS) | PTMS | 11 | 14 | 15 | 15 | 3 |
| MS | Medical Informatics | MIMS | 23 | 31 | 35 | 42 | 31 |
| DPT | Doctor of Physical Therapy | DPT | | | | 16 | 38 |
| | Non-matriculated | 999 | 2 | 3 | 7 | 5 | 0 |
| | Total Graduate | | 126 | 146 | 157 | 192 | 186 |
| | Total | | 276 | 295 | 319 | 336 | 330 |
| | Change from previous year | | 9% | 7% | 8% | 5% | -2% |

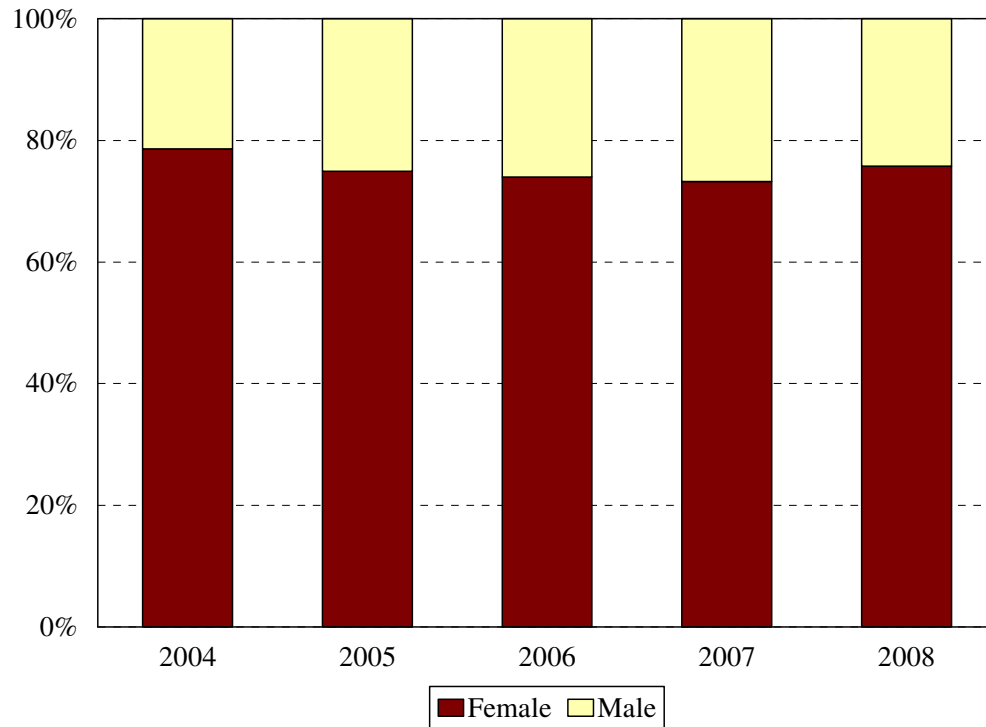
College of Health Related Professions
Enrollment by Full-time and Part-time Status
Fall 2004 to Fall 2008



| Program | Code | Year | | | | | |
|----------------------------|------|------------|-----------|------------|------------|-----------|------------|
| | | 2004 | | | 2005 | | |
| | | FT | PT | %FT | FT | PT | %FT |
| Health Info. Mgt CERT | 1127 | | | | | | |
| Diagnostic Medical Imaging | 1056 | 40 | 7 | 85% | 40 | 8 | 83% |
| Health Info. Mgt BS | 1126 | | | | | | |
| Occupational Therapy | 292 | | | | | | |
| Physical Therapy | 294 | | | | | | |
| Physical Therapy: BS/MS | 295 | 32 | 3 | 91% | 27 | 5 | 84% |
| Physician's Assistant | 252 | 64 | 4 | 94% | 60 | 9 | 87% |
| Non-matriculated | 000 | | | | | | |
| Total Undergraduate | | 136 | 14 | 91% | 127 | 22 | 85% |
| Midwifery Direct Entry CAS | 964 | | | | | | |
| Midwifery- RN | 965 | 0 | 1 | 0% | 1 | 0 | 100% |
| Midwifery- RN: CAS,MS | 966 | 10 | 3 | 77% | | | |
| Midwifery- Direct Entry MS | 967 | 1 | 6 | 14% | 6 | 2 | 75% |
| Midwifery-RN MS | 968 | 0 | 3 | 0% | 5 | 4 | 56% |
| Midwifery (MS completion) | 969 | 44 | 22 | 67% | | | |
| Occupational Therapy | 970 | 11 | 0 | 100% | 58 | 22 | 73% |
| Physical Therapy (BS/MS) | 971 | 11 | 12 | 48% | 14 | 0 | 100% |
| Medical Informatics | MIMS | | | | 11 | 20 | 35% |
| Doctor of Physical Therapy | DPT | | | | | | |
| Non-matriculated | 999 | 0 | 2 | 0% | 0 | 3 | 0% |
| Total Graduate | | 77 | 49 | 61% | 95 | 51 | 65% |
| Total | | 213 | 63 | 77% | 222 | 73 | 75% |
| Change from previous year | | | | 4% | | | -2% |

| Program | Code | Year | | | | | | | | |
|------------------------------------|------|------------|-----------|------------|------------|------------|------------|------------|-----------|------------|
| | | 2006 | | | 2007 | | | 2008 | | |
| | | FT | PT | %FT | FT | PT | %FT | FT | PT | %FT |
| Diagnostic Medical Imaging | DIMI | 42 | 8 | 84% | 41 | 10 | 80% | 40 | 12 | 77% |
| Physical Therapy: BS | 294 | | | | | | | | | |
| Physical Therapy: BS/MS | PTBS | 14 | 3 | 82% | 20 | 6 | 77% | 20 | 1 | 95% |
| Physician's Assistant | PABS | 66 | 9 | 88% | 56 | 10 | 85% | 66 | 5 | 93% |
| Non-matriculated | 000 | | | | 0 | 1 | 0% | | | |
| Total Undergraduate | | 142 | 20 | 88% | 117 | 27 | 81% | 126 | 18 | 88% |
| Midwifery Certificate | MWIC | | | | | | | 0 | 1 | 0% |
| Midwifery Direct Entry CAS | MWDC | | | | | | | 0 | 1 | 0% |
| Midwifery- RN | 965 | 3 | 0 | 100% | | | | | | |
| Midwifery- Direct Entry MS | MWDM | 3 | 1 | 75% | | | | 2 | 1 | 67% |
| Midwifery-RN MS | 968 | 4 | 3 | 57% | | | | | | |
| Midwifery (MS completion) | MWCM | 0 | 2 | 0% | | | | 0 | 3 | 0% |
| Midwifery | MWIF | | | | 8 | 9 | 47% | 6 | 10 | 38% |
| Occupational Therapy | OTMS | 61 | 23 | 73% | 55 | 39 | 59% | 64 | 26 | 71% |
| Physical Therapy (BS and BS/MS) | PTMS | 15 | 0 | 100% | 14 | 1 | 93% | 3 | 0 | 100% |
| Medical Informatics | MIMS | 11 | 24 | 31% | 23 | 19 | 55% | 13 | 18 | 42% |
| Doctor of Physical Therapy | DPT | | | | 16 | 0 | 100% | 37 | 1 | 97% |
| Non-matriculated | 999 | 0 | 7 | 0% | 0 | 5 | 0% | | | |
| Total Graduate | | 97 | 60 | 62% | 117 | 75 | 61% | 125 | 61 | 67% |
| Total | | 239 | 80 | 75% | 234 | 102 | 70% | 251 | 79 | 76% |
| Change from previous year | | | | 0% | | | -5% | | | |

College of Health Related Professions
Enrollment by Gender
Fall 2004 to Fall 2008

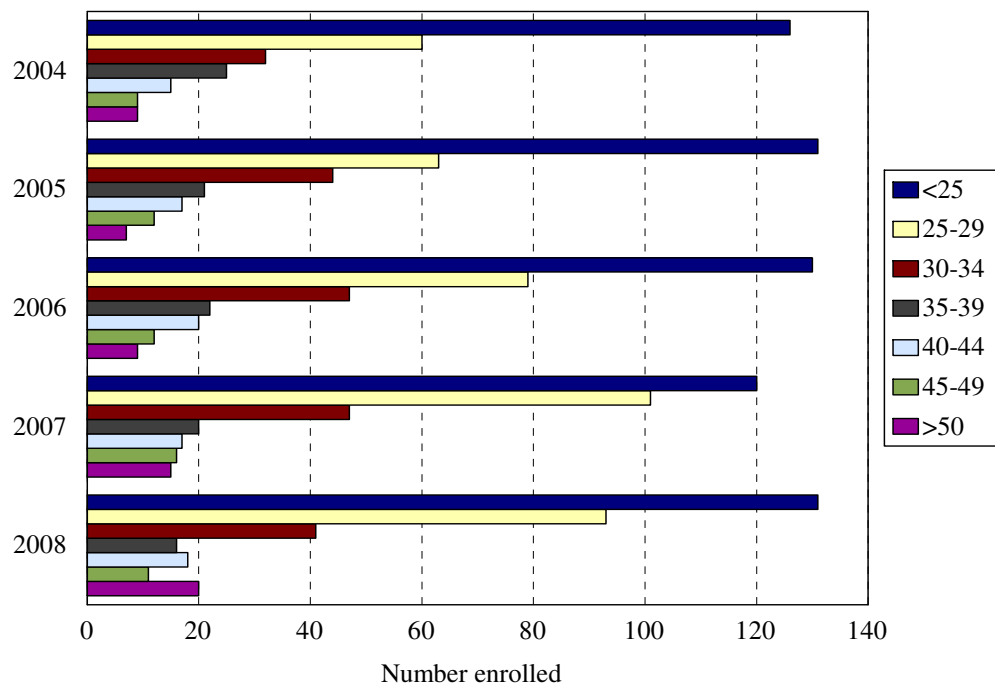


| Gender | Year | | | | |
|--------------|------------|------------|------------|------------|------------|
| | 2004 | 2005 | 2006 | 2007 | 2008 |
| Female | 217 | 221 | 236 | 246 | 250 |
| Male | 59 | 74 | 83 | 90 | 80 |
| % Female | 78% | 75% | 74% | 73% | 76% |
| Total | 276 | 295 | 319 | 336 | 330 |

ENROLLMENT BY GENDER
COLLEGE OF HEALTH RELATED PROFESSIONS

| Award | Program | Code | 2004 | | 2005 | | 2006 | | 2007 | | 2008 | |
|-------|----------------------------|------|------------|-----------|------------|-----------|------------|-----------|------------|-----------|------------|-----------|
| | | | F | M | F | M | F | M | F | M | F | M |
| BS | Diagnostic Medical Imaging | DIMI | 41 | 6 | 43 | 5 | 46 | 4 | 44 | 7 | 45 | 7 |
| BS | Physical Therapy: BS | 294 | 0 | 0 | 0 | 0 | | | | | | |
| BS | Physical Therapy: BS/MS | PTBS | 20 | 15 | 17 | 15 | 8 | 9 | 13 | 13 | 14 | 7 |
| BS | Physician's Assistant | PABS | 49 | 19 | 47 | 22 | 55 | 20 | 48 | 18 | 48 | 23 |
| | Non-matriculated | 000 | | | | | | | 1 | 0 | | |
| | Total Undergraduate | | 110 | 40 | 107 | 42 | 120 | 42 | 106 | 38 | 107 | 37 |
| CAS | Midwifery- Direct Entry | MWDC | | | | | | | | | 1 | 0 |
| CAS | Midwifery- RN | MWIC | 1 | 0 | 1 | 0 | 3 | 0 | | | 1 | 0 |
| MS | Medical Informatics | MIMS | 16 | 7 | 19 | 12 | 12 | 23 | 17 | 25 | 18 | 13 |
| MS | Midwifery- Direct Entry | MWDM | 12 | 1 | 7 | 1 | 4 | 0 | | | 3 | 0 |
| MS | Midwifery-RN MS | 968 | 7 | 0 | 9 | 0 | 7 | 0 | | | | |
| MS | Midwifery (MS completion) | MWCM | 3 | 0 | 0 | 0 | 2 | 0 | | | 3 | 0 |
| MS | Midwifery | MWIF | | | | | | | 17 | 0 | 16 | 0 |
| MS | Occupational Therapy | OTMS | 60 | 6 | 67 | 13 | 72 | 12 | 83 | 11 | 80 | 10 |
| MS | Physical Therapy (BS/MS) | PTMS | 6 | 5 | 8 | 6 | 9 | 6 | 8 | 7 | 0 | 3 |
| DPT | Doctor of Physical Therapy | DPT | | | | | | | 9 | 7 | 21 | 17 |
| | Non-matriculated | 999 | 2 | 0 | 3 | 0 | 7 | 0 | 3 | 2 | | |
| | Total Graduate | | 107 | 19 | 114 | 32 | 116 | 41 | 140 | 52 | 143 | 43 |
| | Total | | 217 | 59 | 221 | 74 | 236 | 83 | 246 | 90 | 250 | 80 |
| | Change from previous year | | 5% | 22% | 2% | 20% | 7% | 12% | 4% | 8% | 2% | -11% |

Total Enrollment by Age Level Fall 2004 to Fall 2008

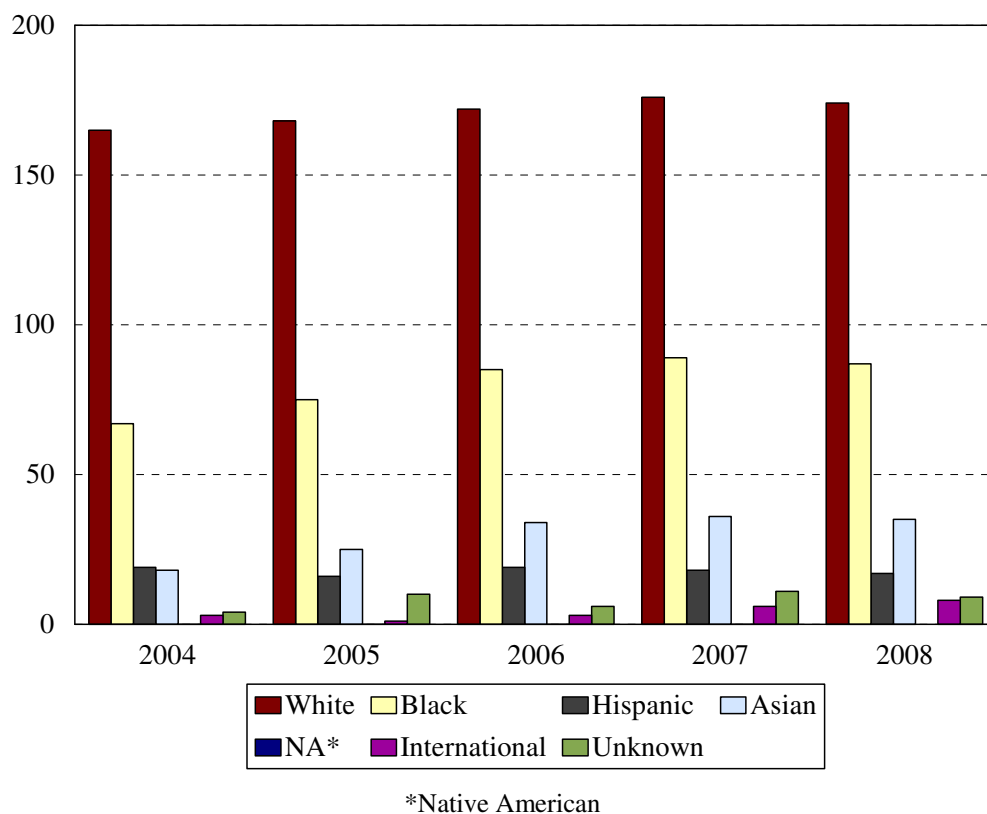


| Age | Year | | | | | | | | | |
|--------------|------------|-----|------------|-----|------------|-----|------------|-----|------------|-----|
| | 2004 | | 2005 | | 2006 | | 2007 | | 2008 | |
| | N | % | N | % | N | % | N | % | N | % |
| Under 25 | 126 | 46% | 131 | 44% | 130 | 41% | 120 | 36% | 131 | 40% |
| 25-29 | 60 | 22% | 63 | 21% | 79 | 25% | 101 | 30% | 93 | 28% |
| 30-34 | 32 | 12% | 44 | 15% | 47 | 15% | 47 | 14% | 41 | 12% |
| 35-39 | 25 | 9% | 21 | 7% | 22 | 7% | 20 | 6% | 16 | 5% |
| 40-44 | 15 | 5% | 17 | 6% | 20 | 6% | 17 | 5% | 18 | 5% |
| 45-49 | 9 | 3% | 12 | 4% | 12 | 4% | 16 | 5% | 11 | 3% |
| 50 and over | 9 | 3% | 7 | 2% | 9 | 3% | 15 | 4% | 20 | 6% |
| Median age | 25 | | 26 | | 26 | | 26 | | 26 | |
| Age range | 19-62 | | 19-63 | | 19-64 | | 19-64 | | 20-59 | |
| Total | 276 | | 295 | | 319 | | 336 | | 330 | |

MEDIAN AGE BY PROGRAM
COLLEGE OF HEALTH RELATED PROFESSIONS

| Award | Program | Code | Median Age | | | | |
|-------|---------------------------------|------|-------------|-------------|-------------|-------------|-------------|
| | | | 2004 | 2005 | 2006 | 2007 | 2008 |
| BS | Diagnostic Medical Imaging | DIMI | 25.0 | 26.0 | 26.0 | 28.0 | 26.5 |
| BS | Physical Therapy: BS | 294 | | | | | |
| BS/MS | Physical Therapy: BS/MS | PTBS | 23.0 | 22.5 | 23.0 | 24.0 | 26.0 |
| BS | Physician's Assistant | PABS | 25.5 | 25.0 | 25.0 | 25.0 | 23.0 |
| | Non-matriculated | 000 | | | | 34.0 | |
| | Total Undergraduate | | 25.0 | 25.0 | 26.0 | 25.5 | 25.5 |
| CAS | Midwifery- Direct Entry | MWDC | | | | | 44.0 |
| CAS | Midwifery- RN | 965 | 32.0 | 30.0 | 31.0 | | |
| CAS | Midwifery | MWIC | | | | 43.0 | 46.0 |
| MS | Medical Informatics | MIMS | 36.0 | | 32.0 | 33.0 | 34.0 |
| MS | Midwifery- Direct Entry | MWDM | 31.0 | 33.0 | 29.5 | | 29.0 |
| MS | Midwifery-RN MS | 968 | 28.0 | 27.0 | 28.0 | | |
| MS | Midwifery (MS completion) | MWCM | 29.0 | | 40.5 | | |
| MS | Midwifery | MWIF | | | | 41.0 | 33.0 |
| MS | Occupational Therapy | OTMS | 23.0 | 24.0 | 24.5 | | 24.0 |
| MS | Physical Therapy (BS and BS/MS) | PTMS | 26.0 | 26.0 | 24.0 | 25.0 | 31.0 |
| DPT | Doctor of Physical Therapy | DPT | | | | 26.0 | 25.0 |
| | Non-matriculated | 999 | 56.0 | 33.0 | 46.0 | 36.0 | |
| | Total Graduate | | 26.0 | 26.0 | 28.0 | 28.0 | 26.0 |
| | Total | | 25.0 | 26.0 | 26.0 | 26.5 | 26.0 |
| | Change from previous year | | -1 | 1 | 0 | .5 | |

College of Health Related Professions
Enrollment by Ethnic Group
Fall 2004 to Fall 2008



| Ethnic Group (IPEDS Categories) | Year | | | | | | | | | |
|------------------------------------|------------|-----|------------|-----|------------|-----|------------|-----|------------|-----|
| | 2004 | | 2005 | | 2006 | | 2007 | | 2008 | |
| | N | % | N | % | N | % | N | % | N | % |
| White | 165 | 60% | 168 | 57% | 172 | 54% | 176 | 52% | 174 | 53% |
| Black | 67 | 24% | 75 | 25% | 85 | 27% | 89 | 26% | 87 | 26% |
| Hispanic | 19 | 7% | 16 | 5% | 19 | 6% | 18 | 5% | 17 | 5% |
| Asian/Pacific Islander | 18 | 7% | 25 | 8% | 34 | 11% | 36 | 11% | 35 | 11% |
| Native American | 0 | 0% | 0 | | 0 | 0% | 0 | 0% | 0 | 0% |
| International | 3 | 1% | 1 | <1% | 3 | 1% | 6 | 2% | 8 | 2% |
| Unknown | 4 | 1% | 10 | 3% | 6 | 2% | 11 | 3% | 9 | 3% |
| % Black and Hispanic | | 31% | | 30% | | 33% | | | | |
| Total | 276 | | 295 | | 319 | | 336 | | 330 | |

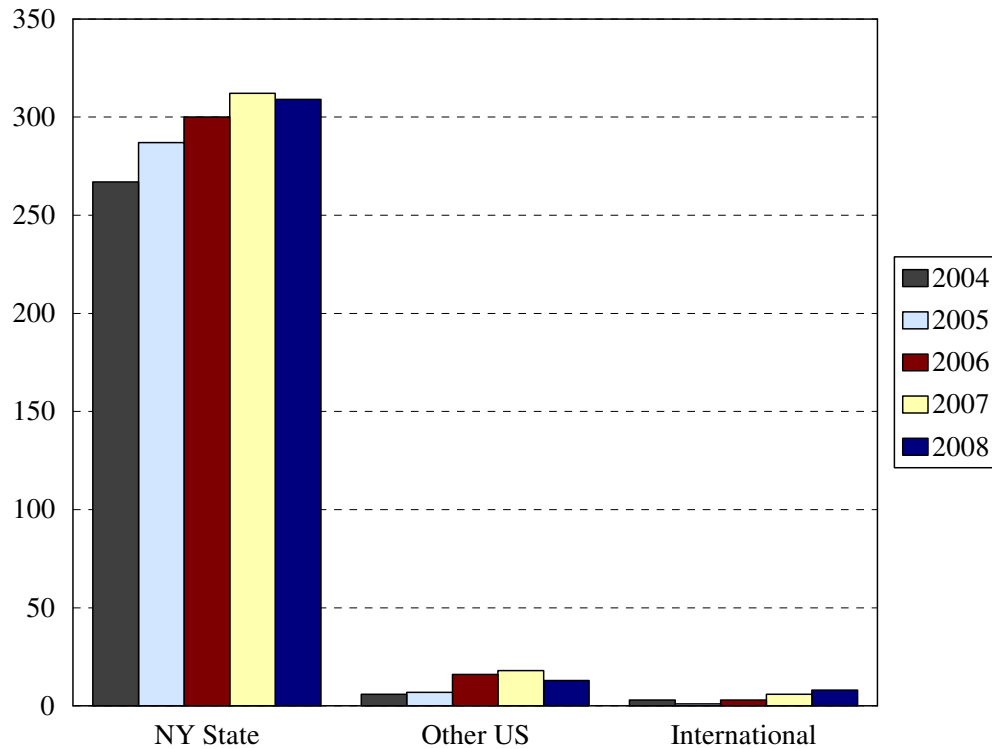
- The Integrated Postsecondary Education Data Set (IPEDS) ethnic categories are those used by the U.S. Department of Education.

ENROLLMENT BY ETHNIC GROUP BY PROGRAM
COLLEGE OF HEALTH RELATED PROFESSIONS

| Program | | 2004 | | | | | | | 2005 | | | | | | |
|-------------------------------|------|------------|-----------|-----------|-----------|----------|----------|----------|------------|-----------|-----------|-----------|----------|----------|-----------|
| | | White | Black | Hispanic | Asian | NA | Inter. | Unknown | White | Black | Hispanic | Asian | NA | Inter. | Unknown |
| Diagnostic Medical Imaging BS | 1056 | 30 | 7 | 1 | 5 | 0 | 2 | 2 | 26 | 10 | 3 | 4 | 0 | 1 | 4 |
| Physical Therapy BS | 294 | | | | | | | | | | | | | | |
| Physical Therapy BS/MS | 295 | 24 | 7 | 3 | 0 | 0 | 0 | 1 | 21 | 5 | 4 | 2 | 0 | 0 | 0 |
| Physician's Assistant BS | 252 | 29 | 26 | 6 | 7 | 0 | 0 | 0 | 33 | 22 | 4 | 10 | 0 | 0 | 0 |
| Non-matriculated | 999 | | | | | | | | | | | | | | |
| Total Undergraduate | | 83 | 40 | 10 | 12 | 0 | 2 | 3 | 80 | 37 | 11 | 16 | 0 | 1 | 4 |
| Midwifery- Direct Entry CAS | 964 | | | | | | | | | | | | | | |
| Midwifery- RN CAS | 965 | 0 | 0 | 1 | 0 | 0 | 0 | 0 | 1 | 0 | 0 | 0 | 0 | 0 | 0 |
| Medical Informatics | 975 | 7 | 13 | 0 | 2 | 0 | 1 | 0 | 8 | 18 | 0 | 3 | 0 | 0 | 2 |
| Midwifery- Direct Entry MS | 967 | 5 | 3 | 3 | 1 | 0 | 0 | 1 | 4 | 1 | 1 | 1 | 0 | 0 | 1 |
| Midwifery-RN MS | 968 | 5 | 1 | 1 | 0 | 0 | 0 | 0 | 5 | 3 | 1 | 0 | 0 | 0 | 0 |
| Midwifery (MS completion) | 969 | 1 | 1 | 1 | 0 | 0 | 0 | 0 | | | | | | | |
| Occupational Therapy MS | 970 | 56 | 7 | 1 | 2 | 0 | 0 | 0 | 61 | 10 | 2 | 5 | 0 | 0 | 2 |
| Physical Therapy (BS & BS/MS) | 971 | 7 | 2 | 1 | 1 | 0 | 0 | 0 | 9 | 3 | 1 | 0 | 0 | 0 | 1 |
| Non-matriculated | 999 | 1 | 0 | 1 | 0 | 0 | 0 | 0 | 0 | 3 | 0 | 0 | 0 | 0 | 0 |
| Total Graduate | | 82 | 27 | 9 | 6 | 0 | 1 | 1 | 88 | 38 | 5 | 9 | 0 | 0 | 6 |
| Total | | 165 | 67 | 19 | 18 | 0 | 3 | 4 | 168 | 75 | 16 | 25 | 0 | 1 | 10 |

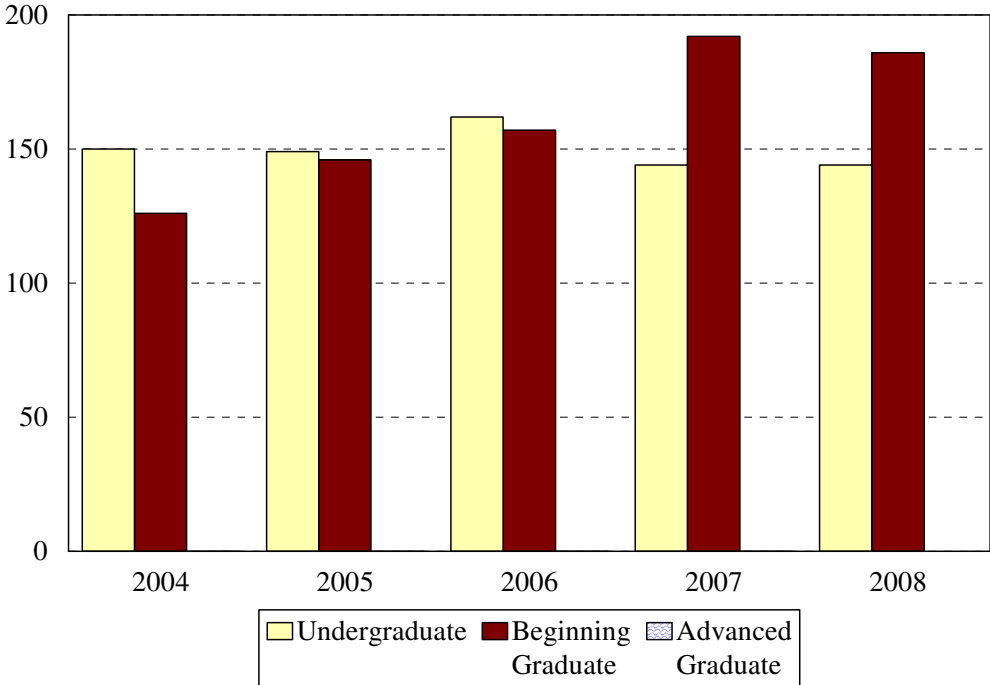
| | 2006 | | | | | | | 2007 | | | | | | | 2008 | | | | | | |
|------------------------|------------|-----------|-----------|-----------|----------|----------|----------|------------|-----------|-----------|-----------|----------|----------|-----------|------------|-----------|-----------|-----------|----------|----------|----------|
| | White | Black | Hispanic | Asian | NA | Inter. | Unknown | White | Black | Hispanic | Asian | NA | Inter. | Unknown | White | Black | Hispanic | Asian | NA | Inter. | Unknown |
| DIMI | 27 | 6 | 4 | 7 | 0 | 1 | 5 | 32 | 8 | 3 | 3 | 0 | 1 | 4 | 34 | 9 | 1 | 4 | 0 | 1 | 3 |
| 294 | | | | | | | | | | | | | | | | | | | | | |
| PTBS | 10 | 3 | 2 | 2 | 0 | 0 | 0 | 14 | 5 | 1 | 5 | 0 | 0 | 1 | 11 | 6 | 0 | 1 | 0 | 2 | 1 |
| PABS | 33 | 28 | 2 | 11 | 0 | 1 | 0 | 26 | 22 | 4 | 12 | 0 | 1 | 1 | 23 | 30 | 6 | 9 | 0 | 1 | 2 |
| 000 | | | | | | | | 1 | 0 | 0 | 0 | 0 | 0 | 0 | | | | | | | |
| Total Undergrad | 86 | 39 | 9 | 21 | 0 | 2 | 5 | 73 | 35 | 8 | 20 | 0 | 2 | 6 | 68 | 45 | 7 | 14 | 0 | 4 | 6 |
| MWDC | | | | | | | | | | | | | | | 0 | 0 | 1 | 0 | 0 | 0 | 0 |
| 965 | 1 | 2 | 0 | 0 | 0 | 0 | 0 | | | | | | | | | | | | | | |
| MWIC | | | | | | | | 0 | 2 | 1 | 0 | 0 | 0 | 0 | 0 | 1 | 0 | 0 | 0 | 0 | 0 |
| MIMS | 5 | 24 | 0 | 5 | 0 | 1 | 0 | 5 | 28 | 0 | 5 | 0 | 3 | 1 | 4 | 19 | 0 | 6 | 0 | 2 | 0 |
| MWDM | 2 | 1 | 0 | 1 | 0 | 0 | 0 | | | | | | | 0 | 1 | 0 | 1 | 0 | 0 | 0 | 1 |
| 968 | 3 | 3 | 1 | 0 | 0 | 0 | 0 | | | | | | | | | | | | | | |
| MWCM | 1 | 1 | 0 | 0 | 0 | 0 | 0 | | | | | | | 3 | 0 | 0 | 0 | 0 | 0 | 0 | 0 |
| MWIF | | | | | | | | 9 | 3 | 2 | 2 | 0 | 0 | 1 | 9 | 4 | 2 | 0 | 0 | 1 | 0 |
| OTMS | 61 | 11 | 4 | 7 | 0 | 0 | 1 | 64 | 14 | 5 | 8 | 0 | 1 | 2 | 62 | 10 | 6 | 9 | 0 | 1 | 2 |
| PTMS | 11 | 2 | 2 | 0 | 0 | 0 | 0 | 10 | 2 | 2 | 1 | 0 | 0 | 0 | 1 | 1 | 0 | 1 | 0 | 0 | 0 |
| DPT | | | | | | | | 14 | 2 | 0 | 0 | 0 | 0 | 0 | 27 | 6 | 1 | 4 | 0 | 0 | 0 |
| 999 | 2 | 2 | 3 | 0 | 0 | 0 | 0 | 1 | 3 | 0 | 0 | 0 | 0 | 1 | | | | | | | |
| Total Graduates | 86 | 46 | 10 | 13 | 0 | 1 | 1 | 103 | 54 | 10 | 16 | 0 | 4 | 5 | 106 | 42 | 10 | 21 | 0 | 4 | 3 |
| Total | 172 | 85 | 19 | 34 | 0 | 3 | 6 | 176 | 89 | 18 | 36 | 0 | 6 | 11 | 174 | 87 | 17 | 35 | 0 | 8 | 9 |

College of Health Related Professions
Enrollment by Permanent Residence
Fall 2004 to Fall 2008



| Residency | Year | | | | | | | | | |
|----------------------|------------|------------|------------|------------|------------|------------|------------|------------|------------|------------|
| | 2004 | | 2005 | | 2006 | | 2007 | | 2008 | |
| | N | % of total | N | % of total | N | % of total | N | % of total | N | % of total |
| New York State | 267 | 97% | 287 | 97% | 300 | 94% | 312 | 93% | 309 | 94% |
| New York City | 229 | 83% | 252 | 85% | 264 | 83% | 272 | 81% | 273 | 83% |
| Bronx | 8 | 3% | 6 | 2% | 11 | 3% | 12 | 4% | 9 | 3% |
| Kings (Brooklyn) | 158 | 57% | 173 | 59% | 171 | 54% | 174 | 52% | 171 | 52% |
| Manhattan | 14 | 5% | 16 | 5% | 20 | 6% | 25 | 7% | 23 | 7% |
| Queens | 43 | 16% | 45 | 15% | 51 | 16% | 53 | 16% | 60 | 18% |
| Richmond (Staten I.) | 6 | 2% | 12 | 4% | 11 | 3% | 8 | 2% | 10 | 3% |
| Other U.S. | 6 | 2% | 7 | 2% | 16 | 5% | 18 | 5% | 13 | 4% |
| International | 3 | 1% | 1 | <1% | 3 | 1% | 6 | 2% | 8 | 2% |
| Total | 276 | | 295 | | 319 | | 336 | | 330 | |

College of Health Related Professions
 Enrollment by Student Level
 Fall 2004 to Fall 2008



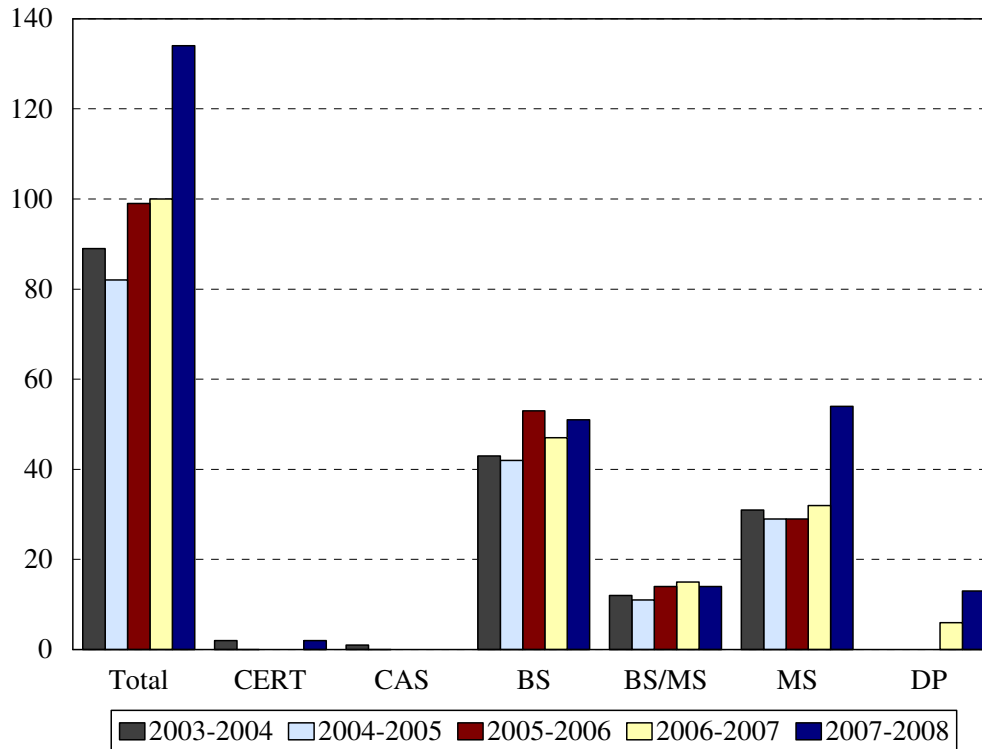
| Student Level | Year | | | | | | | | | |
|--------------------|------------|-----|------------|-----|------------|-----|------------|-----|------------|-----|
| | 2004 | | 2005 | | 2006 | | 2007 | | 2008 | |
| | N | % | N | % | N | % | N | % | N | % |
| Undergraduate | 150 | 54% | 149 | 51% | 162 | 51% | 144 | 43% | 144 | 44% |
| Beginning Graduate | 126 | 46% | 146 | 49% | 157 | 49% | 192 | 57% | 186 | 56% |
| Total | 276 | | 295 | | 319 | | 336 | | 330 | |

ENROLLMENT BY STUDENT LEVEL
COLLEGE OF HEALTH RELATED PROFESSIONS

| Program | Code | 2004 | | 2005 | | 2006 | |
|-----------------------------|------|---------------|--------------------|---------------|--------------------|---------------|--------------------|
| | | Undergraduate | Beginning Graduate | Undergraduate | Beginning Graduate | Undergraduate | Beginning Graduate |
| Health Info. Mgt CERT | 1127 | | | | | | |
| Diagnostic Medical Imaging | 1056 | 47 | | 48 | | 50 | |
| Health Info. Mgt BS | 1126 | | | | | | |
| Occupational Therapy | 292 | | | | | | |
| Physical Therapy | 294 | | | | | | |
| Physical Therapy (BS/MS) | 295 | 35 | | 32 | | 17 | |
| Physician's Assistant | 252 | 68 | | 69 | | 75 | |
| Non-matriculated undergrad. | 999 | | | | | | |
| Midwifery- RN | 965 | | 1 | | 1 | | 3 |
| Nurse Midwifery CERT | 964 | | | | | | |
| Medical Informatics | 975 | | 23 | | 31 | | 35 |
| Midwifery- Direct Entry MS | 967 | | 13 | | 8 | | 4 |
| Midwifery-RN MS | 968 | | 7 | | 9 | | 7 |
| Midwifery (MS completion) | 969 | | 3 | | | | 2 |
| Occupational Therapy-MS | 970 | | 6 | | 80 | | 84 |
| Physical Therapy (BS/MS) | 971 | | 11 | | 14 | | 15 |
| Non-matriculated grad. | 999 | | 2 | | 3 | | 7 |
| Total | | 150 | 126 | 149 | 146 | 162 | 157 |
| Change from previous year | | 13% | 6% | -1% | 16% | 9% | 8% |

| Program | Code | 2007 | | 2008 | |
|-----------------------------|------|---------------|--------------------|---------------|--------------------|
| | | Undergraduate | Beginning Graduate | Undergraduate | Beginning Graduate |
| Diagnostic Medical Imaging | DIMI | 51 | | 52 | |
| Physical Therapy | 294 | | | | |
| Physical Therapy (BS/MS) | PTBS | 26 | | 71 | |
| Physician's Assistant | PABS | 66 | | 21 | |
| Non-matriculated undergrad. | 000 | 1 | | | |
| Nurse Midwifery CERT | MWDC | | | | 1 |
| Midwifery CAS | MWIC | | 3 | | 1 |
| Medical Informatics | MIMS | | 42 | | 31 |
| Midwifery- Direct Entry MS | MWDM | | | | 3 |
| Midwifery-RN MS | 968 | | | | |
| Midwifery (MS completion) | MWCM | | | | 3 |
| Midwifery | MWIF | | 17 | | 16 |
| Occupational Therapy-MS | OTMS | | 94 | | 90 |
| Physical Therapy (BS/MS) | PTMS | | 15 | | 3 |
| Doctor of Physical Therapy | DPT | | | | 38 |
| Non-matriculated grad. | 999 | | 5 | | |
| Total | | 144 | 192 | 144 | 186 |
| Change from previous year | | -11% | 22% | | |

College of Health Related Professions
Degrees Granted by Level
2003-2004 to 2007-2008



| Degrees | Code | Year | | | | |
|-------------------------------|------|-----------|-----------|-----------|------------|------------|
| | | 2003-04 | 2004-05 | 2005-06 | 2006-07 | 2007-08 |
| Diagnostic Medical Imaging BS | DIMI | 16 | 20 | 21 | 18 | 20 |
| Physical Therapy BS | PTBS | 0 | 0 | 0 | 0 | 14 |
| Physical Therapy BS/MS | PTMS | 12 | 11 | 14 | 15 | |
| Physician's Assistant BS | PABS | 27 | 22 | 32 | 29 | 31 |
| Midwifery CERT | MWIC | | | | | 1 |
| Nurse Midwifery CERT | MWNC | 2 | | | | 1 |
| Midwifery Direct Entry CERT | MWDC | | | | | |
| Midwifery- RN CAS | 965 | 1 | | | | |
| Midwifery MS | MWIF | | | | | 2 |
| Midwifery Direct Entry MS | MWDM | 4 | 5 | 4 | 4 | |
| Midwifery- RN MS | MWRM | 3 | 3 | 0 | 2 | 1 |
| Midwifery: MS Completion | MWCM | 2 | 3 | 0 | 1 | |
| Occupational Therapy MS | OTMS | 22 | 18 | 20 | 22 | 32 |
| Medical Informatics | MIMS | | | | | 19 |
| Doctor of Physical Therapy | DPT | | | 5 | 6 | 13 |
| Total | | 89 | 82 | 96 | 100 | 134 |
| Change from previous year | | 7% | -8% | 17% | 4% | 34% |

DEGREES EARNED BY ETHNIC GROUP
COLLEGE OF HEALTH RELATED PROFESSIONS

| Ethnic Group | Year | | | | |
|---------------------------|-----------|-----------|-----------|------------|------------|
| | 2003-04 | 2004-05 | 2005-06 | 2006-07 | 2007-08 |
| White | 46 | 53 | 52 | 68 | 71 |
| % change | -9% | -13% | -2% | 31% | 4% |
| Black | 23 | 18 | 30 | 17 | 35 |
| % change | 22% | -22% | 67% | -43% | 106% |
| Hispanic | 13 | 6 | 6 | 6 | 9 |
| % change | 46% | -54% | 0% | 0% | 50% |
| Asian | 7 | 3 | 5 | 8 | 13 |
| % change | -14% | -57% | 67% | 60% | 63% |
| Native American | | | 0 | 0 | |
| % change | | | | | |
| International | | 1 | 0 | 0 | |
| % change | | | -100% | | |
| Unknown | | | 3 | 1 | 6 |
| % change | | | | -67% | 500% |
| Total | 89 | 82 | 96 | 100 | 134 |
| Change from previous year | 7% | -8% | 17% | 4% | 34% |