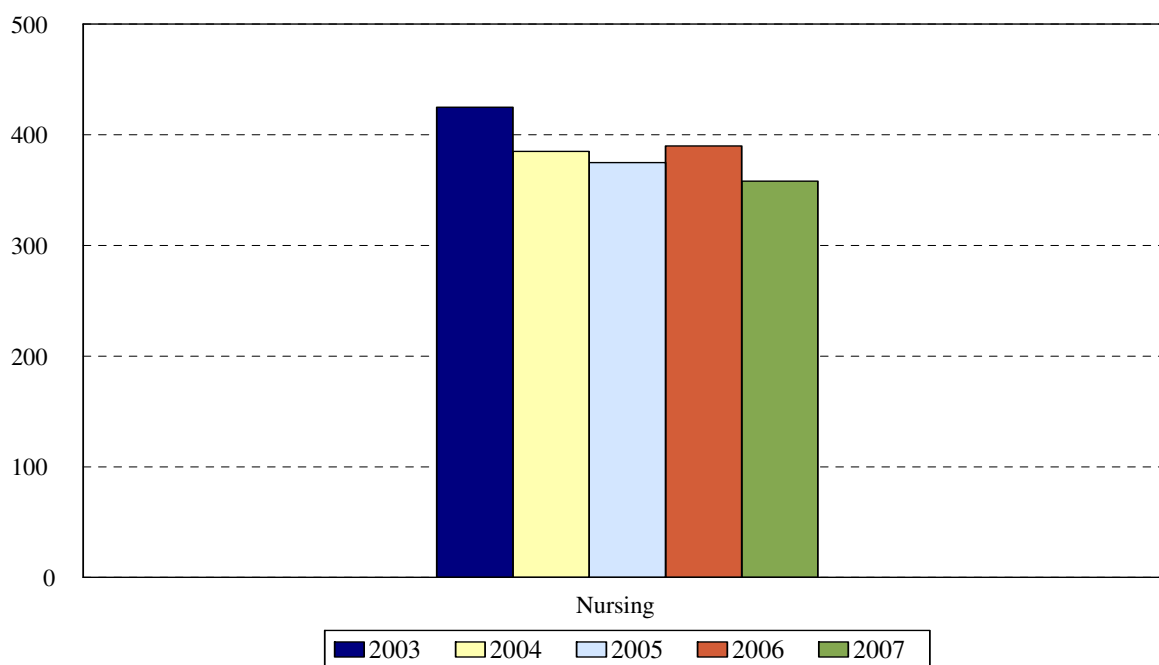


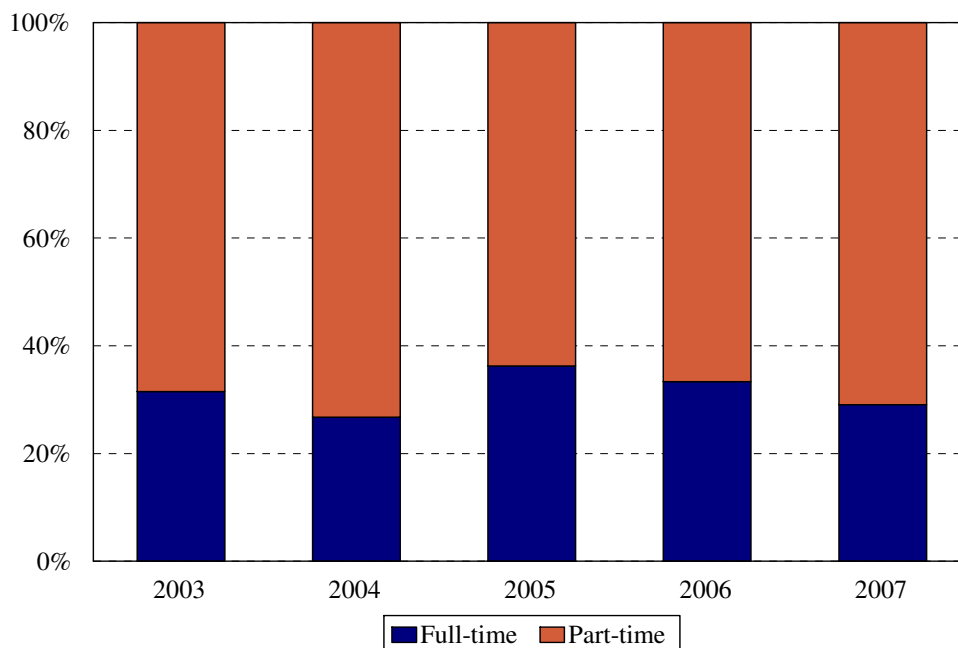
College of Nursing Enrollment Fall 2003 to Fall 2007



Award	Program	Code	Year				
			2003	2004	2005	2006	2007
BS	Accelerated Nursing	NACC	29	38	47	50	61
BS	RN Completion	RNBS	187	166	147	132	104
	Non-matriculated undergraduate	000	3	0	2	6	0
	Total Undergraduates		219	204	196	188	165
CAS	Family Nurse Practitioner	FNPC	2	1	2	3	1
CAS	Women's Nurse Practitioner	930		1			
MS	Clinical Nurse Specialist	CNSM					31
MS	Clinical Nurse Spec. Adult	901	7	14	23	30	
MS	Clinical Nurse Spec. HRMI	902	6	5	2	6	
MS	Family Nurse Practitioner	FNPM	70	61	77	89	97
MS	Nurse Anesthesia: KCH	940	44	40	36	37	
MS	Nurse Anesthesia: Harlem	941	37	36	25	14	
MS	Nurse Anesthesia	NRAN					32
MS	Nurse Midwifery Completion	950	1				
MS	Nurse Midwifery	966	8	5	9	11	
MS	Nurse Midwifery	NRMS					17
MS	Women's Nurse Practitioner	WNPM	8	5	5	12	13
	Non-matriculated	999	23	13	0	0	2
	Total Graduate		206	181	179	202	193
	Total		425	385	375	390	358
	Change from previous year		24%	-10%	-3%	4%	

College of Nursing totals reflect the deactivation of the Generic Nursing program, beginning in 1997.

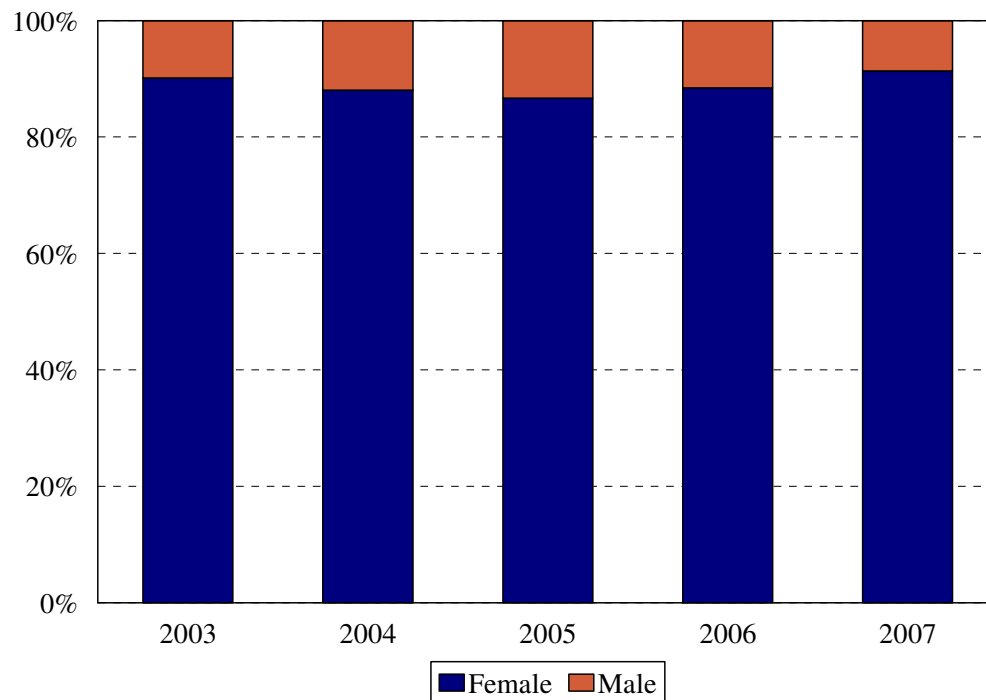
College of Nursing
Enrollment by Full- and Part-time Status
Fall 2003 to Fall 2007



Program	Code	Year								
		2003			2004			2005		
		FT	PT	%FT	FT	PT	%FT	FT	PT	%FT
Accelerated Nursing	NACC	29	0	100%	33	5	87%	46	1	98%
RN Completion BS	RNBS	45	142	24%	19	147	11%	30	117	20%
Non-matriculated	000	0	3	0%				0	2	0%
Total Undergraduates		74	145	34%	52	152	25%	76	120	39%
Family Nurse Practitioner CAS	FNPC	0	2	0%	0	1	0%	0	2	
Women's Nurse Practitioner CAS	930				0	1	0%			
Clinical Nurse Specialist MS	CNSM									
Clinical Nurse Spec. Adult MS	901	1	6	14%	0	14	0%	4	19	17%
Clinical Nurse Spec. HRMI MS	902	1	5	17%	0	5	0%	0	2	0%
Family Nurse Practitioner MS	FNPM	11	59	16%	10	51	16%	16	61	21%
Nurse Anesthesia MS: Kings	940	20	24	45%	20	20	50%	20	16	56%
Nurse Anesthesia MS: Harlem	941	22	15	59%	19	17	53%	14	11	56%
Nurse Midwifery Completion MS	950	0	1	0%						
Nurse Midwifery: RN MS	966	5	3	63%	2	3	40%	5	4	56%
Women's Nurse Practitioner MS	WNPM	0	8	0%	0	5	0%	1	4	20%
Non-matriculated graduate	999	0	23	0%	0	13	0%			
Total Graduate		60	146	29%	51	130	28%	60	119	34%
Total		134	290	32%	103	282	27%	136	239	36%
Change from previous year				6%			-5%			9%

Program	Code	Year					
		2006			2007		
		FT	PT	%FT	FT	PT	%FT
Accelerated Nursing	NACC	39	11	78%	55	6	90%
RN Completion BS	RNBS	31	101	23%	24	80	23%
Non-matriculated	000	0	6	0%	0	0	0%
Total Undergraduates		70	118	37%	79	86	48%
Family Nurse Practitioner CAS	FNPC	2	1	67%	0	1	0%
Women's Nurse Practitioner CAS	930						
Clinical Nurse Specialist MS	CNSM				4	27	13%
Clinical Nurse Spec. Adult MS	901	5	25	17%			
Clinical Nurse Spec. HRMI MS	902	3	3	50%			
Family Nurse Practitioner MS	FNPM	24	65	27%	16	81	16%
Nurse Anesthesia MS: Kings	940	13	24	35%			
Nurse Anesthesia MS: Harlem	941	2	12	14%			
Nurse Anesthesia MS	NRAN				14	18	44%
Nurse Midwifery Completion MS	950						
Nurse Midwifery: RN MS	966	7	4	64%			
Nurse Midwifery MS	NRMS				9	8	53%
Women's Nurse Practitioner MS	WNPM	4	8	33%	1	12	8%
Non-matriculated	999				0	2	0%
Total Graduate		60	142	30%	44	149	91%
Total		130	260	33%	123	235	34%
Change from previous year				-3%			1%

College of Nursing
Enrollment by Gender
Fall 2003 to Fall 2007

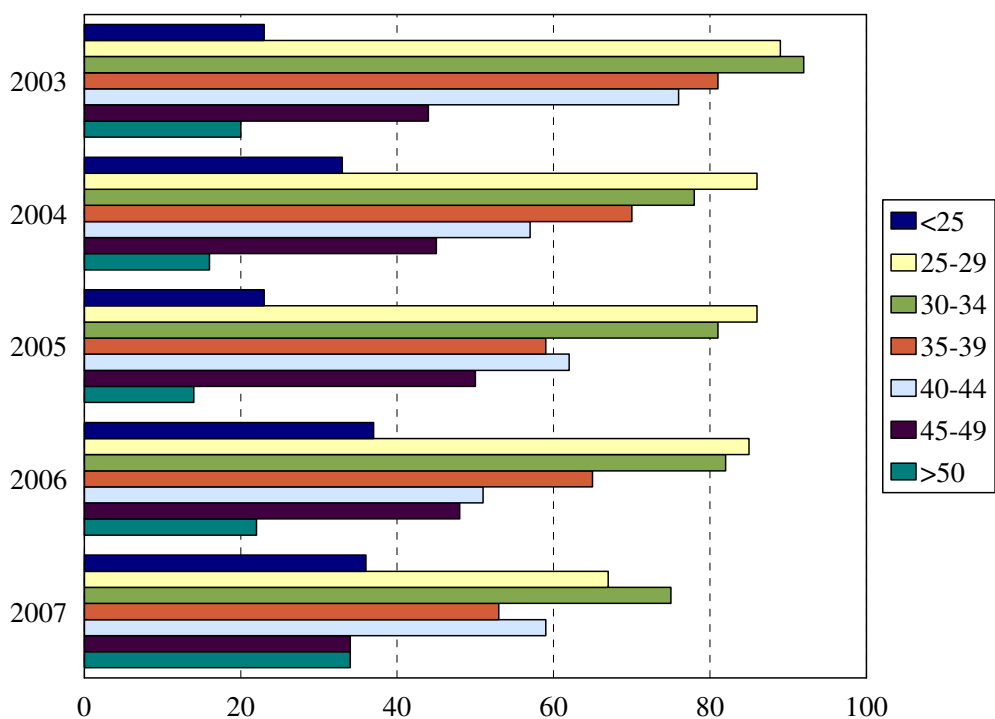


Gender	Year				
	2003	2004	2005	2006	2007
Female	383	339	325	345	327
Male	42	46	50	45	31
% Female	90%	88%	87%	88%	91%
Total	425	385	375	390	358

COLLEGE OF NURSING
ENROLLMENT BY GENDER

Program	Code	2003		2004		2005		2006		2007	
		F	M	F	M	F	M	F	M	F	M
Accelerated Nursing BS	NACC	23	6	34	4	38	9	42	8	54	7
RN Completion BS	RNBS	174	13	155	11	138	9	122	10	98	6
Non-matriculated	000	3	0			1	1	5	1	0	0
Total Undergraduates		200	19	189	15	177	19	169	19	152	13
Family Nurse Practitioner CAS	FNPC	2	0	1	0	2	0	3	0	1	0
Women's Nurse Practitioner CAS	930			1	0						
Clinical Nurse Specialist MS	CNSM									29	2
Clinical Nurse Spec. Adult MS	901	7	0	12	2	20	3	27	3		
Clinical Nurse Spec. HRMI MS	902	6	0	5	0	2	0	6	0		
Family Nurse Practitioner MS	FNPM	68	2	56	5	71	6	82	7	91	6
Nurse Anesthesia MS: Kings	940	37	7	30	10	25	11	26	11		
Nurse Anesthesia MS: Harlem	941	24	13	25	11	14	11	9	5		
Nurse Anesthesia MS	NRAN									22	10
Nurse Midwifery Completion MS	950	1	0								
Nurse Midwifery: RN MS	966	8	0	5	0	9	0	11	0		
Nurse Midwifery MS	NRMS									17	0
Women's Nurse Practitioner MS	WNPM	8	0	5	0	5	0	12	0	13	0
Non-matriculated	999	22	1	10	3	0	0			2	0
Total Graduate		183	23	150	31	148	31	176	26	175	18
Total		383	42	339	46	325	50	345	45	327	31
Change from previous year		31%	27%	-13%	9%	-4%	9%	6%	-10%	-5%	-31%

College of Nursing
Enrollment by Age Level
Fall 2003 to Fall 2007

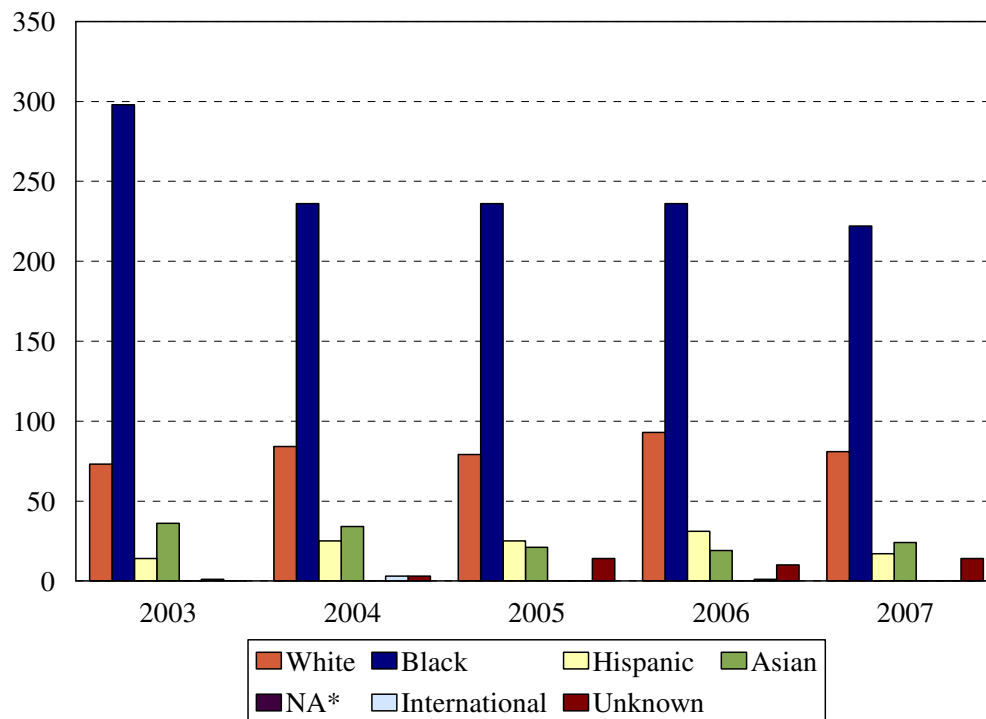


Age	Year									
	2003		2004		2005		2006		2007	
	N	%	N	%	N	%	N	%	N	%
Under 25	23	5%	33	9%	23	6%	37	9%	36	10%
25-29	89	21%	86	22%	86	23%	85	22%	67	19%
30-34	92	22%	78	20%	81	22%	82	21%	75	21%
35-39	81	19%	70	18%	59	16%	65	17%	53	15%
40-44	76	18%	57	15%	62	17%	51	13%	59	16%
45-49	44	10%	45	12%	50	13%	48	12%	34	10%
50 and over	20	5%	16	4%	14	4%	22	6%	34	10%
Age range	21-55		18-59		19-55		19-58		21-59	
Median age	35		34		34		34		35	
Total	425		385		375		390		358	

COLLEGE OF NURSING
MEDIAN AGE BY PROGRAM

Award	Program	Code	Median Age				
			2003	2004	2005	2006	2007
BS	Accelerated Nursing BS	NACC	30.0	28.5	30.0	28.0	29.0
BS	RN Completion BS	RNBS	36.0	35.5	35.0	34.0	35.0
	Non-matriculated	000	34.0		38.0	34.0	
	Total Undergraduate		35.0	34.5	33.0	33.0	33.0
CAS	Family Nurse Practitioner	FNPC	50.0	40.0	46.0	40.0	36.0
CAS	Women's Nurse Practitioner	930		47.0			
MS	Clinical Nurse Specialist	CNSM					39.0
MS	Clinical Nurse Spec. Adult	901	40.0	37.5	37.0	39.5	
MS	Clinical Nurse Spec. HRMI	902	41.0	44.0	39.0	28.5	
MS	Family Nurse Practitioner	FNPM	38.0	38.0	39.0	38.0	40.0
MS	Nurse Anesthesia : KCH	940	32.0	32.0	34.0	35.0	
MS	Nurse Anesthesia: Harlem	941	34.0	30.5	31.0	31.5	
MS	Nurse Anesthesia	NRAN					37.0
MS	Nurse Midwifery Completion	950	45.0				
MS	Nurse Midwifery: RN	966	31.0	30.0	31.0	29.0	
MS	Nurse Midwifery	NRMS					31.0
MS	Women's Nurse Practitioner	WNPM	32.0	28.0	32.0	32.0	33.0
	Non-matriculated	999	31.0	37.0			39.0
	Total Graduate		35.0	34.0	35.0	35.0	36.0
	Total		35.0	34.0	34.0	34.0	35.0
	Change from previous year		-1	-1	0	0	1

College of Nursing
Enrollment by Ethnic Group
Fall 2003 to Fall 2007



*Native American

Ethnic Group (IPEDS Categories)	Year									
	2003		2004		2005		2006		2007	
	N	%	N	%	N	%	N	%	N	%
White	76	18%	84	22%	79	21%	93	24%	81	23%
Black	298	70%	236	61%	236	63%	236	61%	222	62%
Hispanic	14	3%	25	6%	25	7%	31	8%	17	5%
Asian/Pacific Islander	36	8%	34	9%	21	6%	19	5%	24	7%
Native American										
International	1	<1%	3	1%	0	0%	1	<1%		
Unknown			3	1%	14	4%	10	3%	14	4%
% Black and Hispanic		73%		67%		70%		68%		67%
Total	425		385		375		390		358	

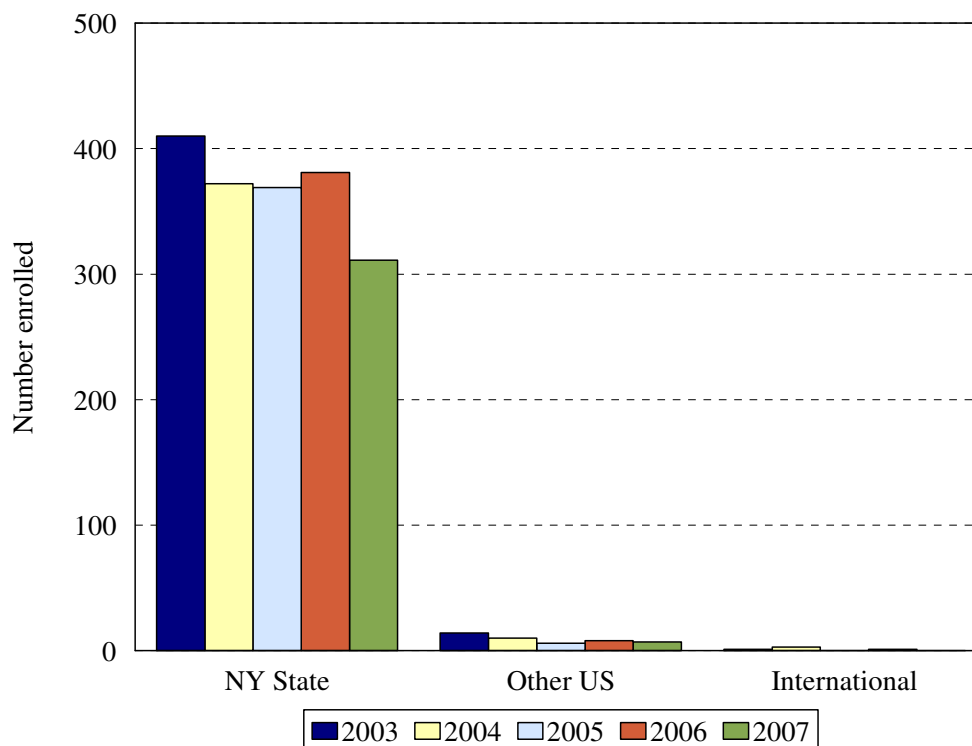
- The Integrated Postsecondary Education Data Set (IPEDS) ethnic categories are those used by the U.S. Department of Education.

ENROLLMENT BY ETHNIC GROUP BY PROGRAM
COLLEGE OF NURSING

Program	White	Black	Hispanic	Asian	International	Unknown	White	Black	Hispanic	Asian	International	Unknown
	2003						2004					
NACC	6	22	0	1	0	0	22	7	2	5	2	0
RNBS	25	149	5	7	1	0	14	132	9	7	1	3
000	1	2	0	0	0	0						
Total Und.	32	173	5	8	1	0	36	139	11	12	3	3
FNPC	1	1	0	0	0	0	0	1	0	0	0	0
930							0	1	0	0	0	0
CNSM												
901		6	1				0	14	0	0	0	0
902	0	5	0	1	0	0	0	4	1	0	0	0
FNPM	13	49	6	2	0	0	12	42	4	3	0	0
940	16	20	2	6	0	0	20	12	4	4	0	0
941	7	14	0	16	0	0	12	8	4	12	0	0
NRAN												
950				1								
966	3	5	0	0	0	0	0	5	0	0	0	0
NRMS												
WNPM	1	6	0	1	0	0	1	2	1	1	0	0
999	3	19	0	1	0	0	3	8	0	2	0	0
Total Grad.	44	125	9	28	1	0	48	97	14	22	0	0
Total	76	298	14	36	1	0	84	236	25	34	3	3

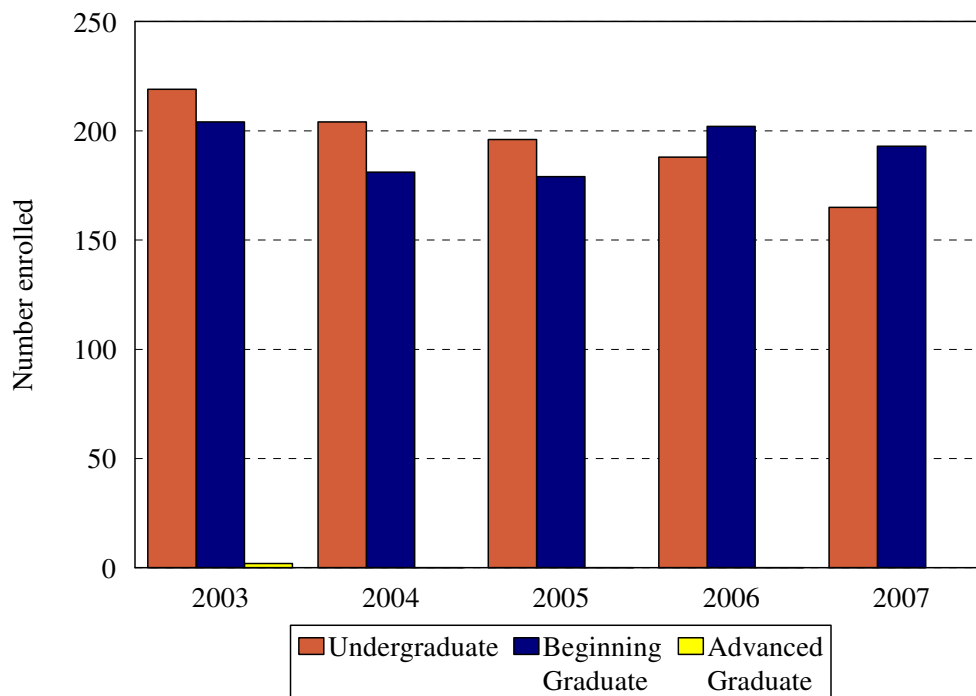
Program	White	Black	Hispanic	Asian	International	Unknown	White	Black	Hispanic	Asian	International	Unknown	White	Black	Hispanic	Asian	International	Unknown
	2005						2006						2007					
NACC	19	20	5	3	0	0	21	21	3	5	0	0	24	27	2	8	0	0
RNBS	11	113	7	6	0	10	29	85	11	4	1	2	21	64	7	5	0	7
000	1	1	0	0	0	0	2	3	1	0	0	0	0	0	0	0	0	0
Total Und.	31	134	12	9	0	10	52	109	15	9	1	2	45	91	9	13	0	7
FNPC	0	2	0	0	0	0	0	2	0	0	0	1	0	1	0	0	0	0
930																		
CNSM													2	27	0	1	0	1
901	2	20	0	1	0	0	3	24	0	1	0	2						
902	0	2	0	0	0	0	0	6	0	0	0	0						
FNPM	15	51	5	2	0	4	13	66	5	2	0	3	18	70	2	3	0	4
940	19	11	4	2	0	0	14	14	4	4	0	1						
941	8	6	4	7	0	0	6	2	4	2	0	0						
NRAN													9	14	3	5	0	1
950																		
966	3	6	0	0	0	0	4	5	1	1	0	0						
NRMS													5	10	1	1	0	0
WNPM	1	4	0	0	0	0	1	8	2	0	0	0	2	7	2	1	0	1
999													0	2	0	0	0	0
Total Grad.	48	102	13	12	0	4	41	127	16	10	0	8	36	131	8	11	0	7
Total	79	236	25	21	0	14	93	236	31	19	1	10	81	222	17	24	0	14

College of Nursing
Enrollment by Permanent Residence
Fall 2003 to Fall 2007



Residency	Year									
	2003		2004		2005		2006		2007	
	N	% of total	N	% of total	N	% of total	N	% of total	N	% of total
New York State	410	96%	372	96%	369	98%	381	98%	311	87%
New York City	337	79%	308	80%	317	85%	340	87%	304	85%
Bronx	18	4%	10	3%	12	3%	11	3%	16	4%
Kings (Brooklyn)	223	52%	195	51%	206	55%	218	56%	193	54%
Manhattan	18	4%	23	6%	23	6%	19	5%	19	5%
Queens	76	18%	74	19%	70	19%	89	23%	71	20%
Richmond (Staten I.)	2	0%	6	2%	6	2%	3	1%	5	1%
Other U.S.	14	3%	10	3%	6	2%	8	2%	7	2%
International	1	<1%	3	1%	0	0%	1	<1%	0	0%
Total	425		385		375		390		358	

College of Nursing
Enrollment by Student Level
Fall 2003 to Fall 2007



Note: Beginning graduates include MS degree students and CAS students with few than 24 credits; advanced graduate students include only CAS students with more than 23 credits.

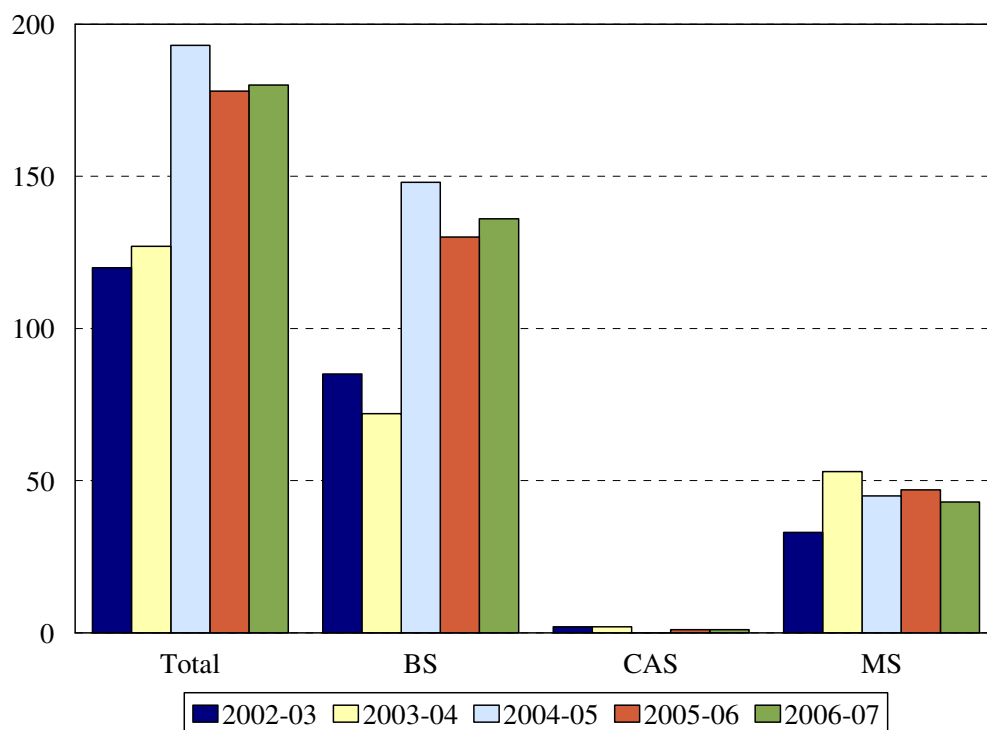
Student Level	Year									
	2003		2004		2005		2006		2007	
	N	%	N	%	N	%	N	%	N	%
Undergraduate	219	51%	204	53%	196	52%	188	48%	165	46%
Beginning Graduate	204	48%	181	47%	179	48%	202	52%	193	54%
Advanced Graduate	2	<1%	0	0%	0	0%	0	0%	0	
Total	425		385		375		390		358	

ENROLLMENT BY STUDENT LEVEL
COLLEGE OF NURSING

Program	Code	2003			2004		
		Undergraduates	Beginning Graduates	Advanced Graduates	Undergraduates	Beginning Graduates	Advanced Graduates
Accelerated Nursing BS	NACC	29			38		
RN Completion BS	RNBS	187			166		
Non-matriculated undergrad	000	3					
Family Nurse Practitioner CAS	FNPC			2		1	
Women's Nurse Practitioner CAS	930					1	
Clinical Nurse Specialist MS	CNSM						
Clinical Nurse Spec. Adult MS	901		7			14	
Clinical Nurse Spec. HRMI MS	902		6			5	
Family Nurse Practitioner MS	FNPM		70			61	
Nurse Anesthesia MS: Kings	940		44			40	
Nurse Anesthesia MS: Harlem	941		37			36	
Nurse Anesthesia MS	NRAN						
Nurse Midwifery Completion MS	950		1				
Nurse Midwifery: RN MS	966		8			5	
Nurse Midwifery MS	NRMS						
Women's Nurse Practitioner MS	WNPM		8			5	
Non-matriculated	999		23			13	
Total		219	204	2	204	181	
Change from previous year		65%	6%		-7%	-13%	-200%

Program	Code	2005			2006			2007		
		Undergraduates	Beginning Graduates	Advanced Graduates	Undergraduates	Beginning Graduates	Advanced Graduates	Undergraduates	Beginning Graduates	Advanced Graduates
Accelerated Nursing BS	NACC	47			50			61		
RN Completion BS	RNBS	147			132			104		
Non-matriculated undergrad	000	2			6					
Family Nurse Practitioner CAS	FNPC		2			3			1	
Women's Nurse Practitioner CAS	930									
Clinical Nurse Specialist MS	CNSM								31	
Clinical Nurse Spec. Adult MS	901		23			30				
Clinical Nurse Spec. HRMI MS	902		2			6				
Family Nurse Practitioner MS	FNPM		77			89			97	
Nurse Anesthesia MS: Kings	940		36			37				
Nurse Anesthesia MS: Harlem	941		25			14				
Nurse Anesthesia MS	NRAN								32	
Nurse Midwifery Completion MS	950									
Nurse Midwifery: RN MS	966		9			11				
Nurse Midwifery MS	NRMS								17	
Women's Nurse Practitioner MS	WNPM					12			13	
Non-matriculated grad	999									
Total		196	179		188	202		165	193	
Change from previous year		-4%	-1%		-4%	13%		-12%	-4%	

Degrees Granted by Level
College of Nursing
2002-2003 to 2006-2007



Degrees	Code	Year				
		2002-03	2003-04	2004-05	2005-06	2006-07
Generic-Nursing BS	291					
RN Completion BS	RNBS	85	72	121		44
Accelerated Nursing	NACC			27	130	92
Family Nurse Practitioner CAS	FNPC	1	2	0	1	1
Women's Nurse Practitioner CAS	930	1	0	0		
Clinical Nurse Specialist MS	CNSM				1	
Clinical Nurse Spec. Adult MS	901	5	5	2		7
Clinical Nurse Spec. HRMI MS	902			2		
Family Nurse Practitioner MS	FNPM	13	22	18	18	13
Nurse Anesthesia MS: Kings	940	10	9	12	26	10
Nurse Anesthesia MS: Harlem	941		12	10		11
Nurse Anesthesia MS	NRAN					
Nurse Midwifery Completion MS	950	0	0	0	1	
Nurse Midwifery: RN MS	966	3	4	1		2
Nurse Midwifery MS	NRMS					
Women's Nurse Practitioner MS	WNPM	0	1	0	1	
Total		120	127	193	178	180
Change from previous year		-28%	6%	52%	-8%	1%

COLLEGE OF NURSING
DEGREES EARNED BY ETHNIC GROUP

Ethnic Group	Year				
	2002-03	2003-04	2004-05	2005-06	2006-07
White	18	17	36	39	36
% change	-44%	-6%	112%	8%	-8%
Black	85	92	139	103	116
% change	-35%	8%	51%	-26%	13%
Hispanic	5	9	4	7	17
% change	0%	44%	-56%	75%	143%
Asian	4	7	13	21	10
% change	0%	43%	86%	62%	-52%
Native American	0	0	0	0	0
% change					
International	5	1	0	3	0
% change		-400%	-100%		-100%
Unknown	3	1	1	5	1
% change	0%	-200%	0%	400%	-80%
Total	120	127	193	178	180
Change from previous year	-28%	6%	52%	-8%	1%