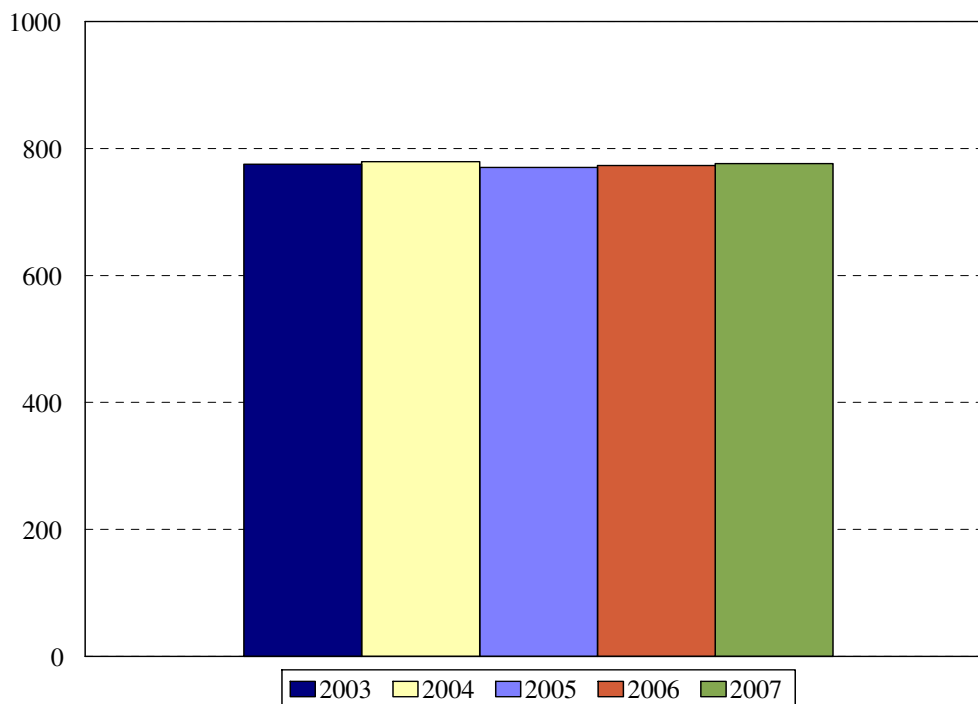


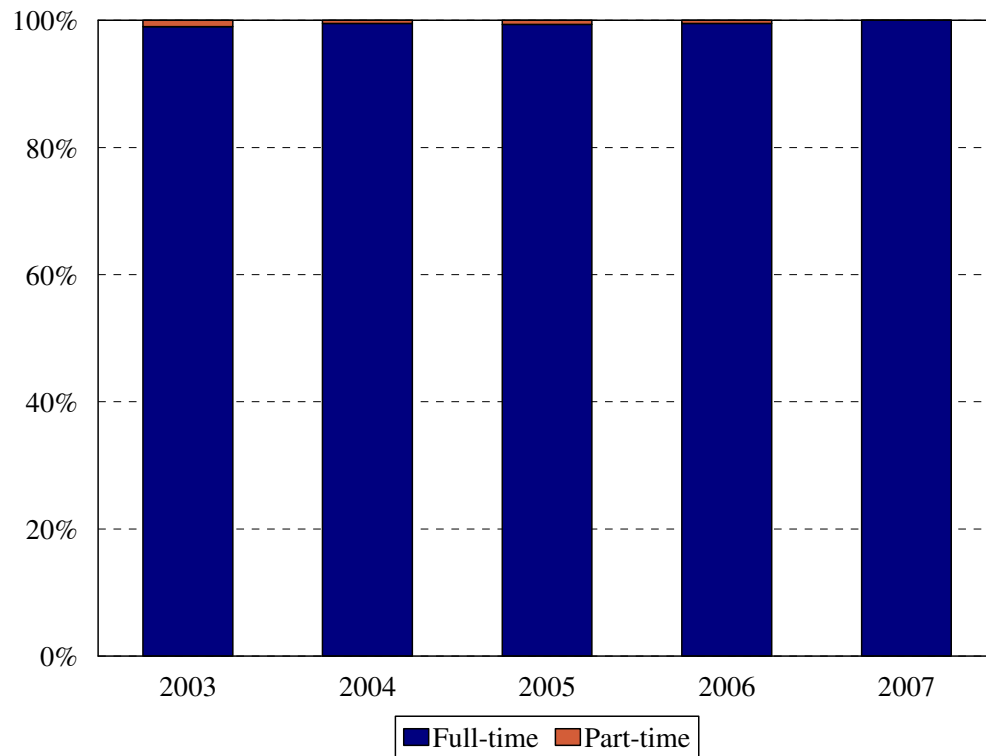
College of Medicine Enrollment MD and MD/MPH Fall 2003 to Fall 2007



College of Medicine MD and MD/MPH	Year				
	2003	2004	2005	2006	2007
New students	180	172	185	184	170
Continuing students	595	607	585	589	606
Total	775	779	770	773	776
Change from previous year	0%	1%	-1%	0%	0%

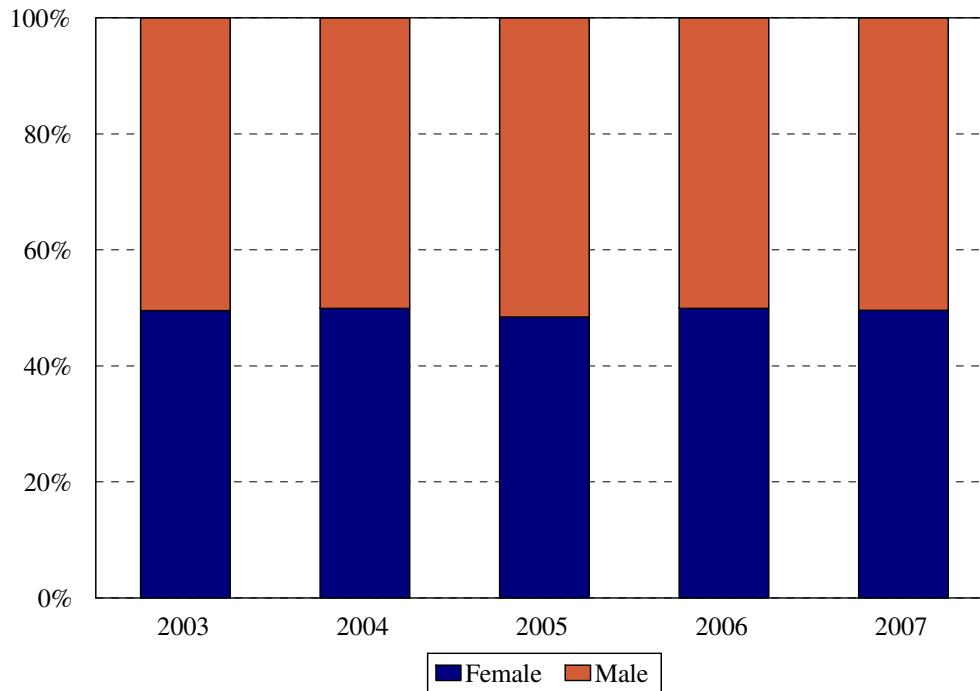
- College of Medicine MD Program totals reflect a planned reduction in entering class size to 180 beginning in 1997 and a planned increase beginning in 2000.
- The total in 2002 includes 6 students concurrently enrolled in the MPH Program, and the total in 2003, 10 students.
- The total in 2005 does not include 2 oral surgeons attending required college of medicine courses.

**College of Medicine: MD and MD/MPH
Enrollment by Full- and Part-time Status
Fall 2003 to Fall 2007**



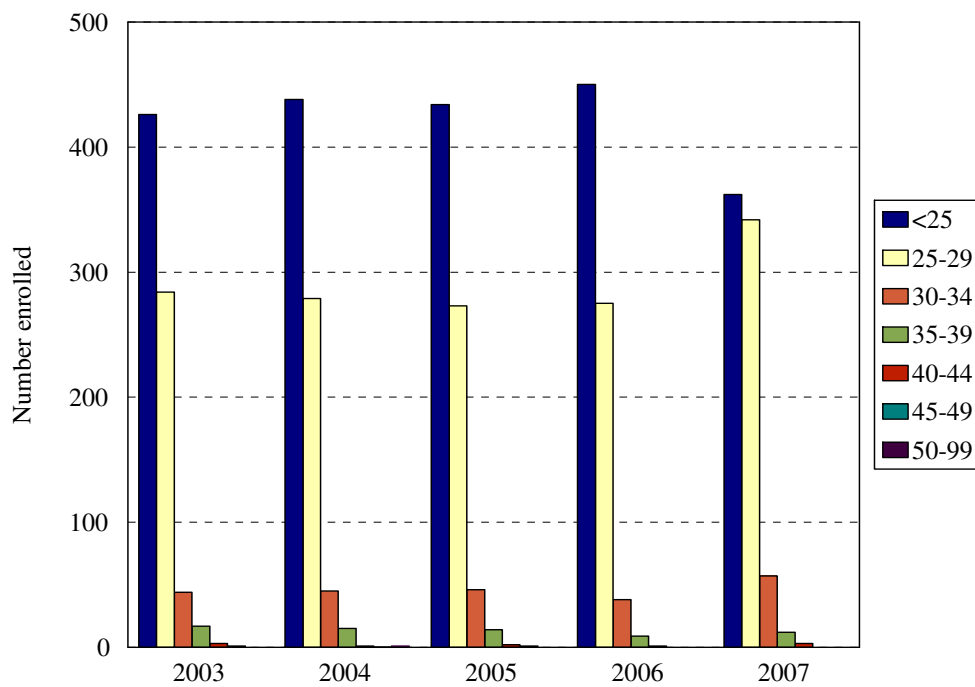
Enrollment Levels	Year				
	2003	2004	2005	2006	2007
Full-time	767	775	767	769	776
Part-time	8	4	3	4	0
% Full-time	99%	99%	99%	99%	100%
Total	775	779	770	773	776

**College of Medicine: MD and MD/MPH
Enrollment by Gender
Fall 2003 to Fall 2007**



Gender	Year			Year			Year			Year			Year		
	2003			2004			2005			2006			2007		
	F	M	%F	F	M	%F	F	M	%F	F	M	%F	F	M	%F
New 1 st year	88	92	49%	88	84	51%	92	93	50%	91	93	49%	85	85	50%
Continuing	296	299	50%	301	306	50%	281	304	48%	295	294	50%	300	306	50%
Total	384	391	50%	389	390	50%	373	397	48%	386	387	50%	385	391	50%
Change from previous year			0%			0%			-2%			2%			0%

College of Medicine: MD and MD/MPH
Enrollment by Age Level
 Fall 2003 to Fall 2007



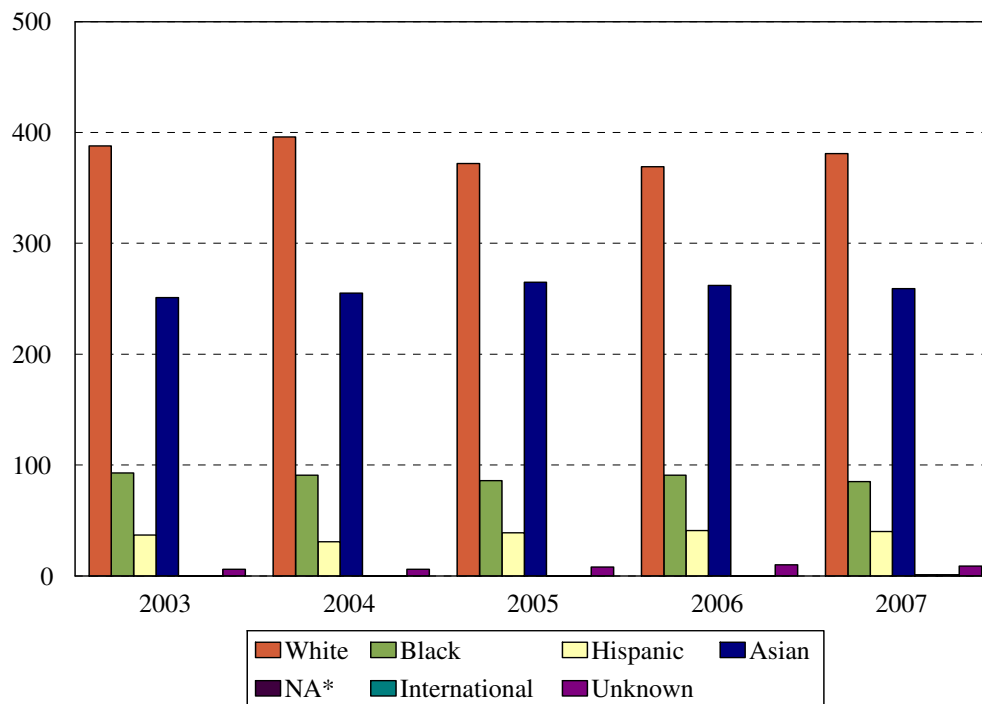
All Medical Students

Age	Year									
	2003		2004		2005		2006		2007	
	N	%	N	%	N	%	N	%	N	%
Under 25	426	55%	438	56%	434	56%	450	58%	362	47%
25-29	284	37%	279	36%	273	35%	275	36%	342	44%
30-34	44	6%	45	6%	46	6%	38	5%	57	7%
35-39	17	2%	15	2%	14	2%	9	1%	12	2%
40-44	3	<1%	1	<1%	2	<1%	1	<1%	3	<1%
45-49	1	<1%	0	0%	1	<1%				
50 and over			1	<1%						
Median age	24		24		25		24		22	
Age range	20-46		20-55		20-46		20-40		19-43	
Total	775		779		770		773		776	

New First Year Medical Students

Age	Year									
	2003		2004		2005		2006		2007	
	N	%	N	%	N	%	N	%	N	%
Under 25	148	82%	144	84%	144	78%	139	76%	127	75%
25-29	28	16%	20	12%	36	19%	38	21%	37	22%
30-34	2	1%	6	3%	5	3%	5	3%	2	1%
35-39	2	1%	2	1%	0	0%	2	1%	3	2%
40-44					0	0%	0	0%	1	1%
45-49					0	0%				
50 and over										
Median age	22		22		23		23		23	
Age range	20-36		20-38		20-34		20-36		19-43	
Total	180		172		185		184		170	

**College of Medicine: MD and MD/MPH
Enrollment by Ethnic Group
Fall 2003 to Fall 2007**



*Native American students numbered 0 in 2003, 0 in 2004, 0 in 2005, 0 in 2006 and 1 in 2007.

All Medical Students

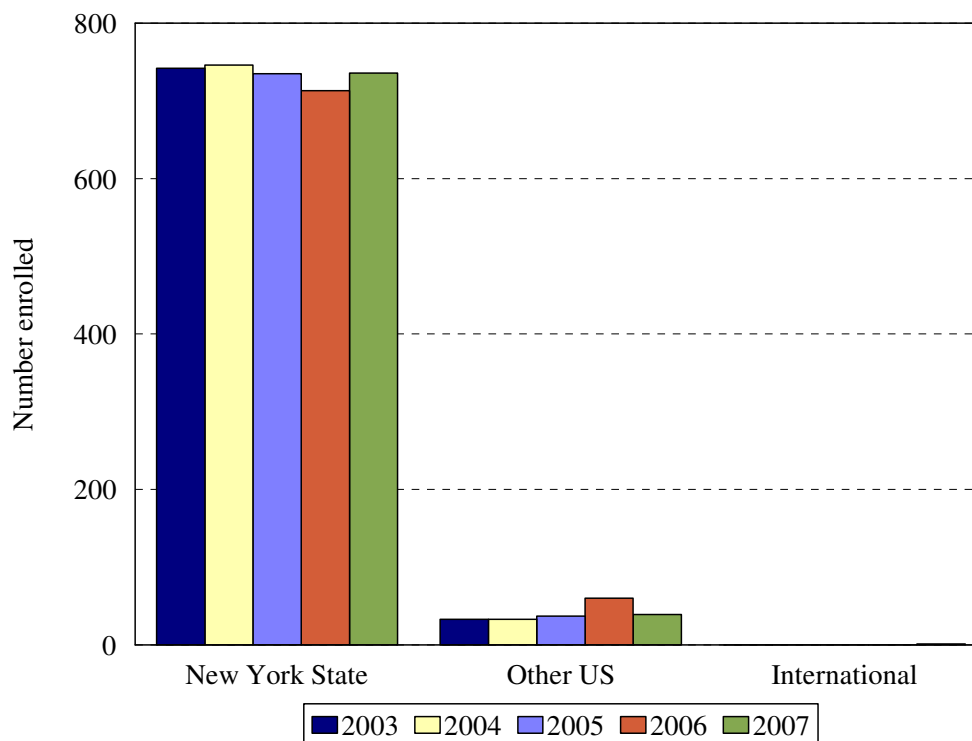
Ethnic Group (IPEDS Categories)	Year									
	2003		2004		2005		2006		2007	
	N	%	N	%	N	%	N	%	N	%
White	413	53%	396	51%	372	48%	369	48%	381	49%
Black	93	12%	91	12%	86	11%	91	12%	85	11%
Hispanic	30	4%	31	4%	39	5%	41	5%	40	5%
Asian/Pacific Islander	234	30%	255	33%	265	34%	262	34%	259	33%
Native American	0	0%	0	0%	0	0%	0	0%	1	<1%
International	0	0%	0	0%	0	0%	0	0%	1	<1%
Unknown	5	1%	6	1%	8	1%	10	1%	9	1%
<i>Black and Hispanic</i>	123	16%	122	16%	125	16%	132	17%	125	16%
Total	775		779		770		773		776	

- The Integrated Postsecondary Education Data Set (IPEDS) ethnic categories are those used by the U.S. Department of Education.

New First Year Medical Students

Ethnic Group (IPEDS Categories)	Year									
	2003		2004		2005		2006		2007	
	N	%	N	%	N	%	N	%	N	%
White	91	51%	98	57%	88	48%	92	50%	84	49%
Black	24	10%	17	10%	19	10%	17	9%	17	10%
Hispanic	13	7%	3	2%	11	6%	7	4%	12	7%
Asian/Pacific Islander	56	31%	54	31%	65	35%	65	35%	51	30%
Native American									1	1%
International										
Unknown	2	1%			2	1%	3	2%	5	3%
<i>Black and Hispanic</i>	37	17%	20	12%	30	16%	24	13%	29	17%
Total	180		172		185		184		170	

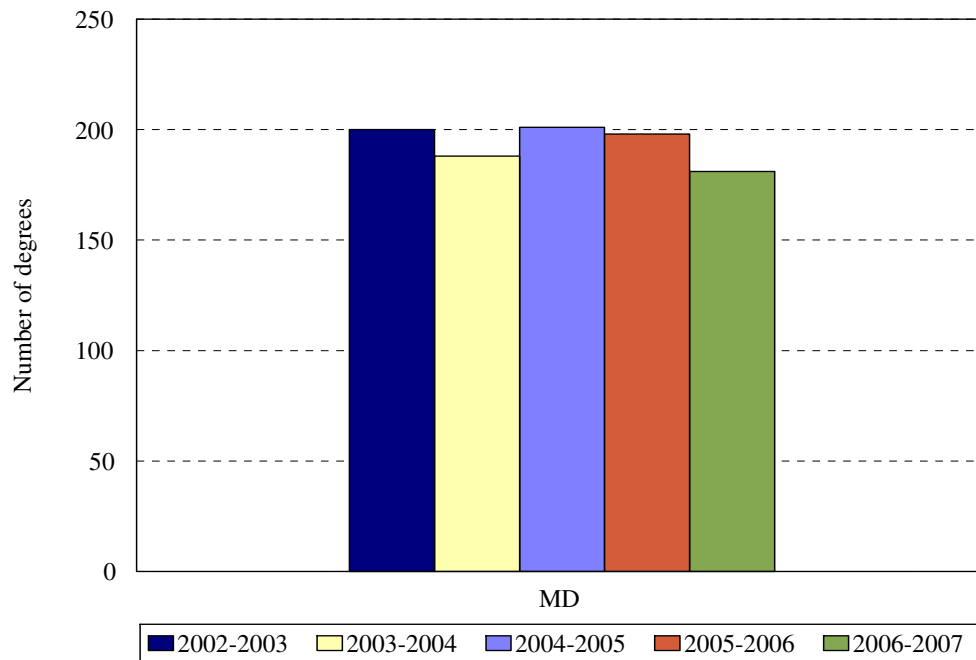
**College of Medicine: MD and MD/MPH
Enrollment by Permanent Residence**
Fall 2003 to Fall 2007



Residency	Year									
	2003		2004		2005		2006		2007	
	N	% of total	N	% of total	N	% of total	N	% of total	N	% of total
New York State	742	96%	746	96%	734	95%	713	92%	736	95%
New York City	512	66%	490	63%	468	61%	459	59%	476	61%
Bronx	17	2%	10	1%	12	2%	12	2%	13	2%
Kings (Brooklyn)	243	31%	229	29%	217	28%	227	29%	259	33%
Manhattan	81	10%	74	10%	74	10%	68	9%	59	8%
Queens	134	17%	140	18%	133	17%	125	16%	119	15%
Richmond (Staten I.)	37	5%	37	5%	32	4%	27	3%	26	3%
Other U.S.	33	4%	33	4%	37	5%	60	8%	39	5%
International	0	0%	0	0%	0	0%	0	0%	1	<1%
Total	775		779		770		773		776	

College of Medicine: MD and MD/MPH Degrees Granted by Level

Fiscal Years 2002-2003 to 2006-2007



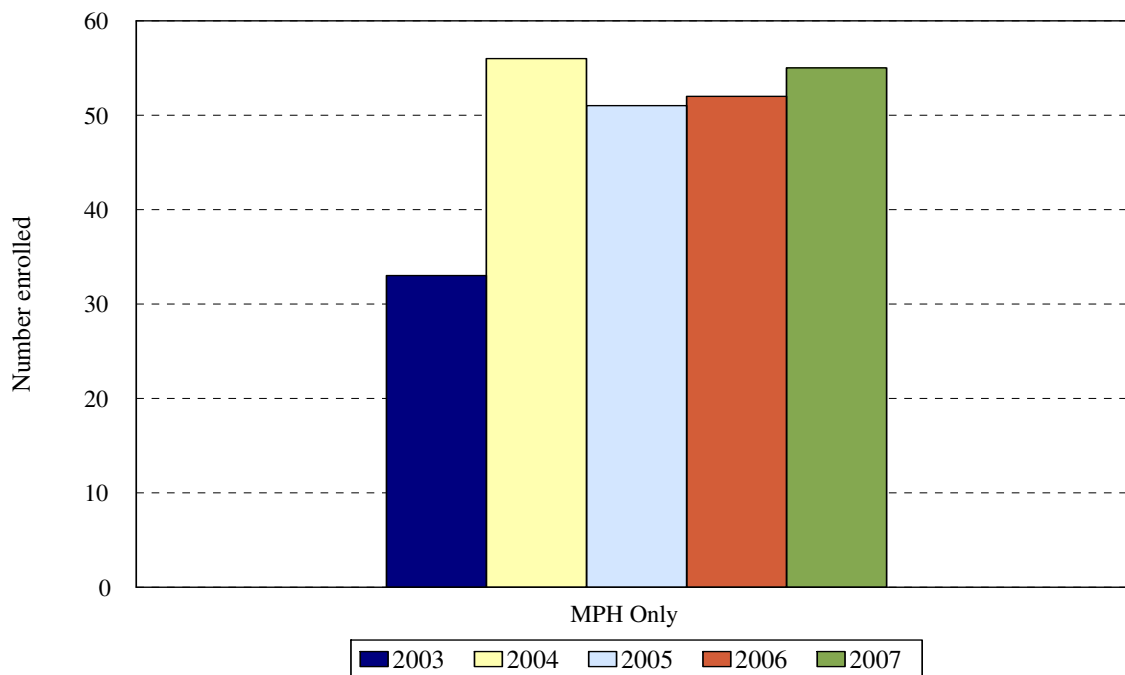
Degrees granted during July 1 (year 1) to June 30 (year 2) periods.

Degree Level	Year				
	2002-2003	2003-2004	2004-2005	2005-2006	2006-2007
Doctor of Medicine	200	188	201	198	181
Change from previous year	4%	-6%	7%	-1%	-9%

DEGREES EARNED BY ETHNIC GROUP
COLLEGE OF MEDICINE

Ethnic Group	Year				
	2002- 2003	2003- 2004	2004- 2005	2005- 2006	2006- 2007
White	117	91	104	93	86
% change	10%	-29%	14%	-11%	-8%
Black	21	23	25	22	20
% change	17%	9%	9%	-12%	-9%
Hispanic	9	7	4	10	12
% change	-10%	-29%	-43%	150%	20%
Asian	52	65	67	70	61
% change	-12%	20%	3%	4%	-13%
Native American	0	0	0	0	0
International	0	0	0	0	0
% change					
Unknown	0	2	1	3	2
% change			-50%	200%	-33%
Total	200	188	201	198	181
Change from previous year	4%	-6%	7%	-1%	-9%

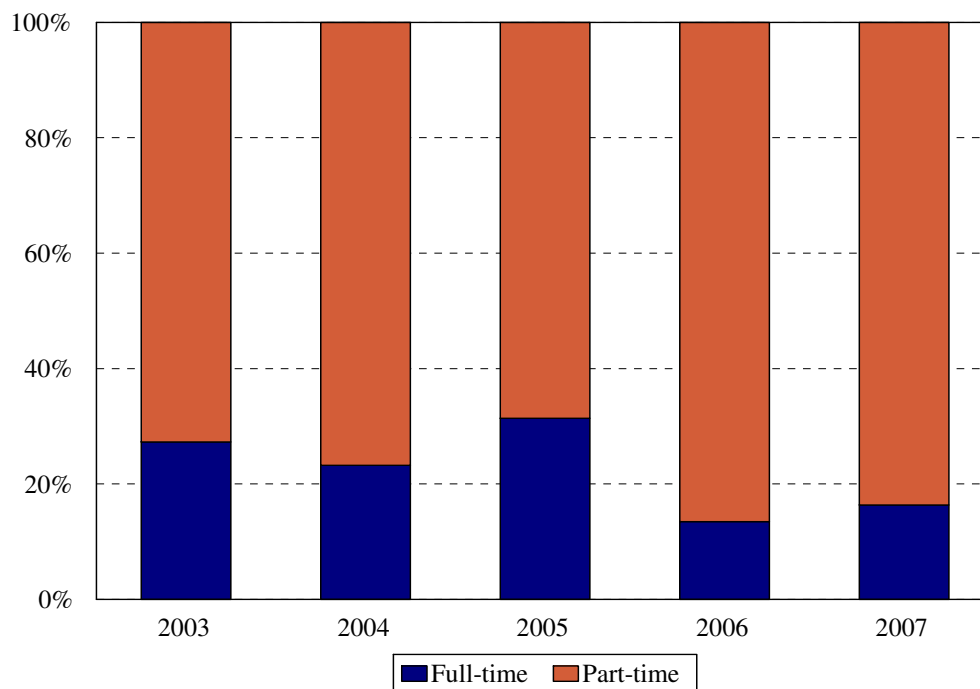
Masters of Public Health Fall 2003 to Fall 2007



College of Medicine MD and MD/MPH	Year				
	2003	2004	2005	2006	2007
New students	11	20	38	31	39
Continuing students	22	36	13	21	16
Total	33	56	51	52	55
Change from previous year	50%	41%	-9%	2%	6%

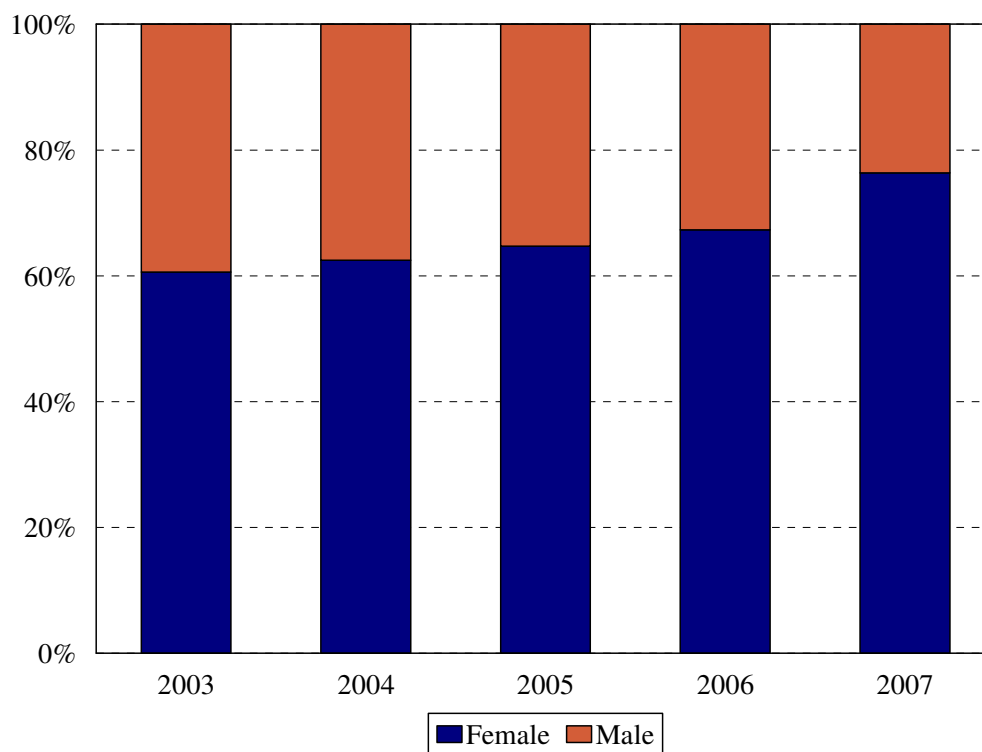
The totals do **not** include students concurrently enrolled in the MD/MPH Programs: 6 in 2002, 10 in 2003, 16 in 2004, 17 in 2005, and 17 in 2006.

**Masters of Public Health
Enrollment by Full- and Part-time Status
Fall 2003 to Fall 2007**



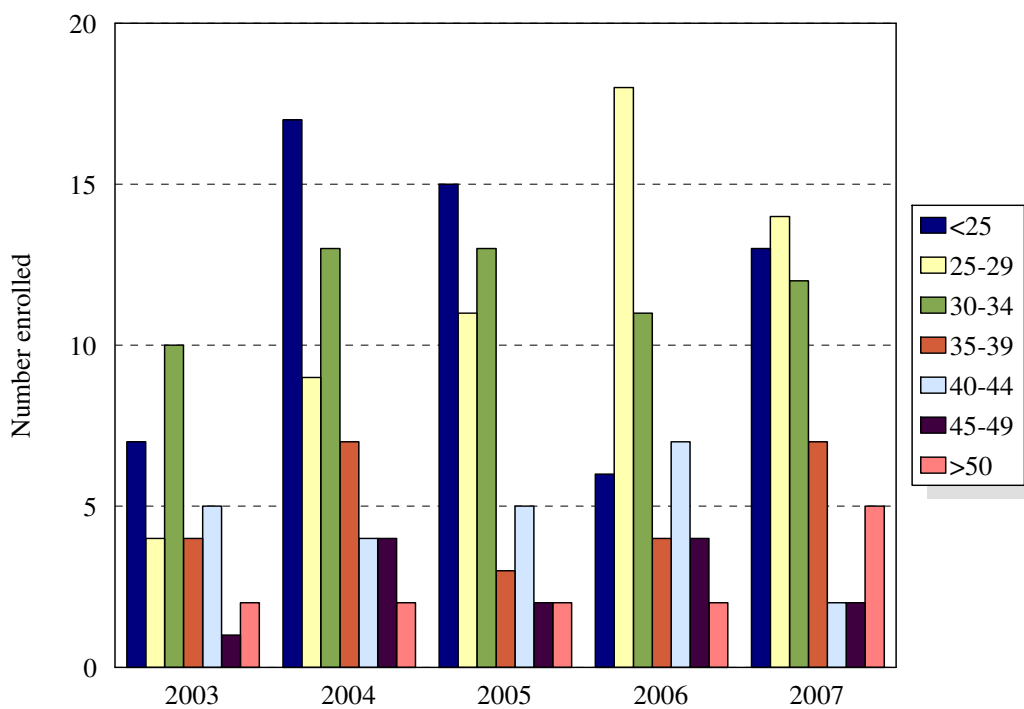
Enrollment Levels	Year				
	2003	2004	2005	2006	2007
Full-time	9	13	16	7	9
Part-time	24	43	35	45	46
% Full-time	27%	23%	31%	13%	16%
Total	33	56	51	52	55

Masters of Public Health Enrollment by Gender Fall 2003 to Fall 2007



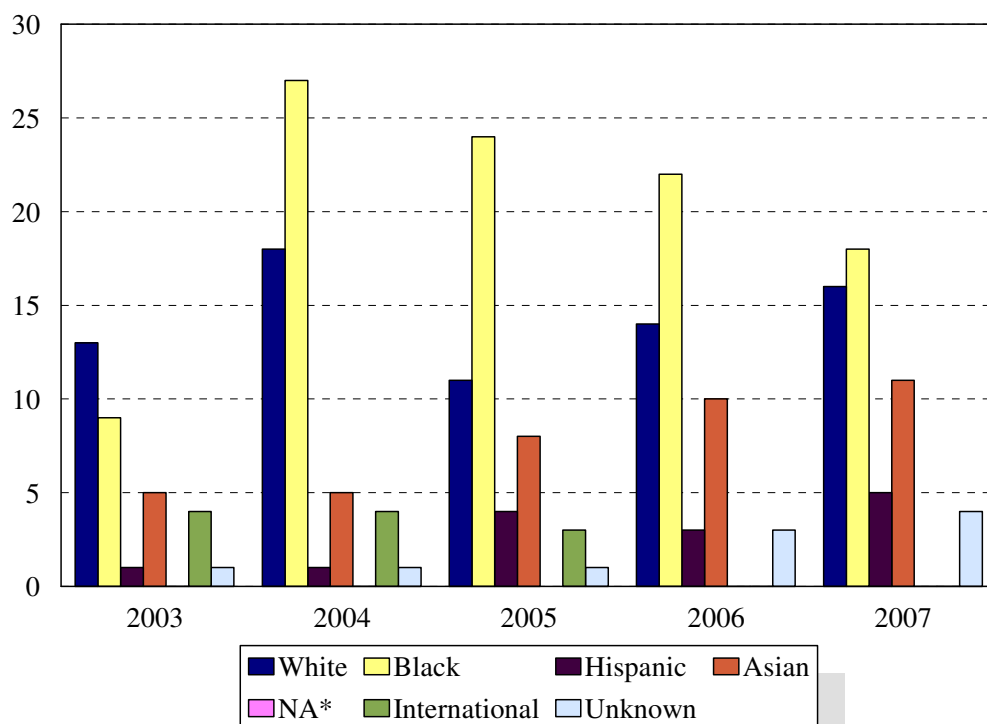
Gender	Year			Year			Year			Year			Year		
	2003			2004			2005			2006			2007		
	F	M	%F	F	M	%F	F	M	%F	F	M	%F	F	M	%F
Total	20	13	61%	35	21	63%	33	18	65%	35	17	67%	42	13	76%
Change from previous year			-3%			2%			2%			3%			9%

Masters of Public Health Enrollment by Age Level Fall 2003 to Fall 2007



Age	Year									
	2003		2004		2005		2006		2007	
	N	%	N	%	N	%	N	%	N	%
Under 25	7	21%	17	30%	15	29%	6	12%	13	24%
25-29	4	12%	9	16%	11	22%	18	35%	14	25%
30-34	10	30%	13	23%	13	25%	11	21%	12	22%
35-39	4	12%	7	13%	3	6%	4	8%	7	13%
40-44	5	15%	4	7%	5	10%	7	13%	2	4%
45-49	1	3%	4	7%	2	4%	4	8%	2	4%
50 and over	2	6%	2	4%	2	4%	2	4%	5	9%
Median age	31		31		31		30		30	
Age range	21-53		21-53		21-54		21-55		22-60	
Total	33		56		51		52		55	

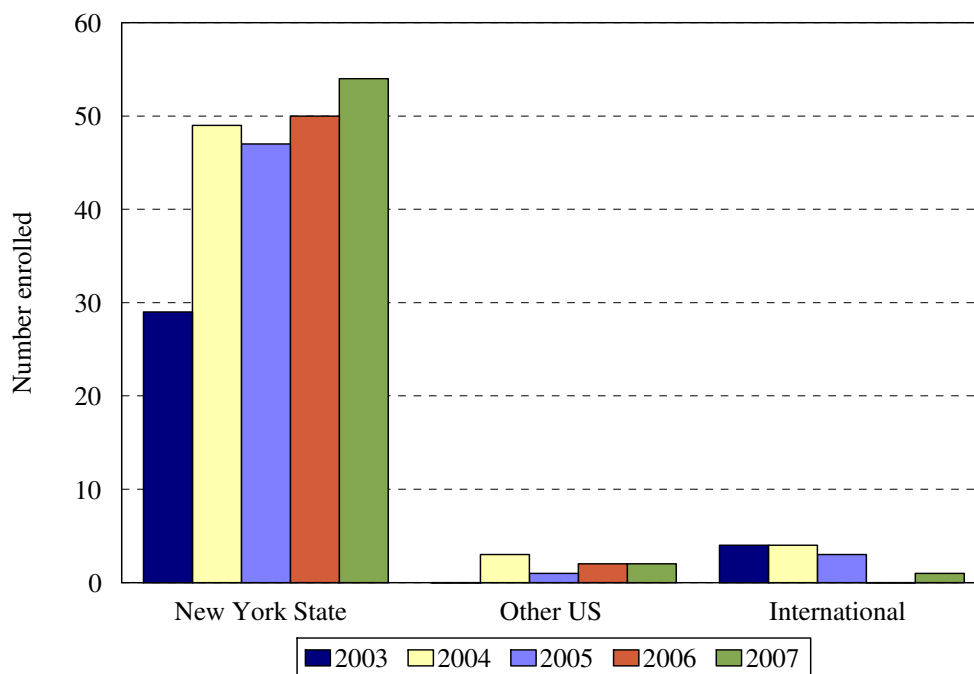
Masters of Public Health Enrollment by Ethnic Group Fall 2003 to Fall 2007



Ethnic Group (IPEDS Categories)	Year									
	2003		2004		2005		2006		2007	
	N	%	N	%	N	%	N	%	N	%
White	13	39%	18	32%	11	22%	14	27%	16	29%
Black	9	27%	27	48%	24	47%	22	42%	18	33%
Hispanic	1	3%	1	2%	4	8%	3	6%	5	9%
Asian/Pacific Islander	5	15%	5	9%	8	16%	10	19%	11	20%
Native American	0	0%	0	0%	0	0%	0	0%	0	0%
International	4	12%	4	7%	3	6%	0	0%	0	0%
Unknown	1	3%	1	2%	1	2%	3	6%	4	7%
<i>Black and Hispanic</i>	10	30%	28	50%	28	55%	25	48%	23	42%
Total	33		56		51		52		55	

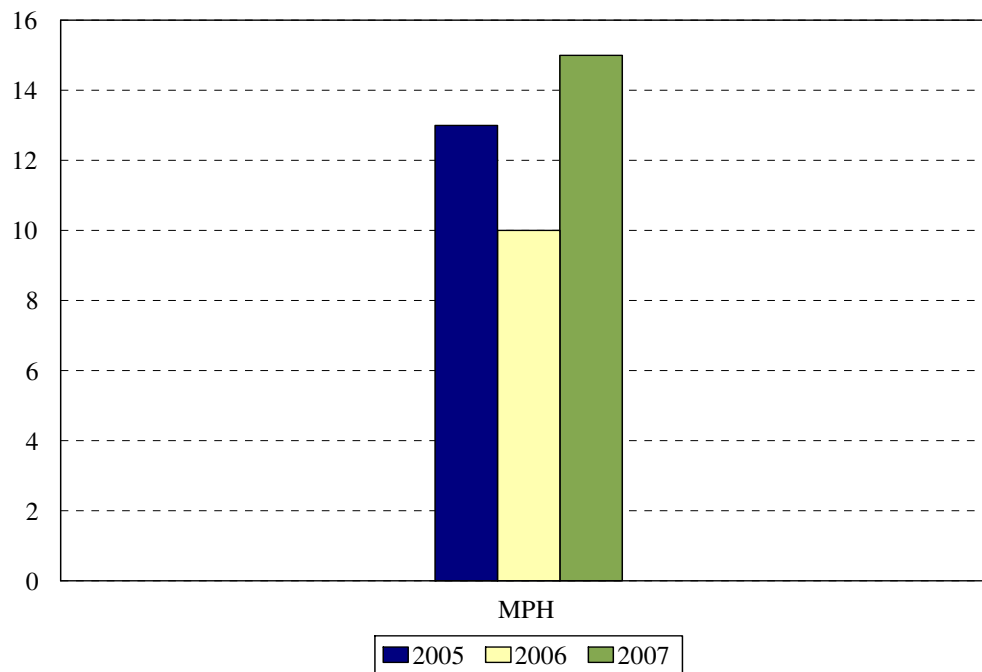
- The Integrated Postsecondary Education Data Set (IPEDS) ethnic categories are those used by the U.S. Department of Education.

College of Medicine: MPH Only
Enrollment by Permanent Residence
 Fall 2003 to Fall 2007



Residency	Year									
	2003		2004		2005		2006		2007	
	N	% of total	N	% of total	N	% of total	N	% of total	N	% of total
New York State	29	88%	49	88%	47	92%	50	96%	54	98%
New York City	23	70%	40	71%	40	78%	39	75%	42	76%
Bronx	1	3%	2	4%	1	2%	1	2%	2	4%
Kings (Brooklyn)	17	52%	26	46%	28	55%	28	54%	25	45%
Manhattan	3	9%	4	7%	5	10%	3	6%	2	4%
Queens	2	6%	6	11%	5	10%	5	10%	8	15%
Richmond (Staten I.)	0	0%	2	4%	1	2%	2	4%	3	5%
Other U.S.	0	0%	3	5%	1	2%	2	4%	2	4%
International	4	12%	4	7%	3	6%			1	2%
Total	33		56		51		52		55	

**College of Medicine: MPH
Degrees Granted by Level**
Fiscal Years 2002-2003 to 2006-2007



Degree Level	Year				
	2002-2003	2003-2004	2004-2005	2005-2006	2006-2007
MPH			13	10	15
Change from previous year				-23%	50%

DEGREES EARNED BY ETHNIC GROUP
MASTERS IN PUBLIC HEALTH

Ethnic Group	Year				
	2002- 2003	2003- 2004	2004- 2005	2005- 2006	2006- 2007
White			5	2	4
% change				-80%	100%
Black			4	4	8
% change				0%	100%
Hispanic			0	2	1
% change					-50%
Asian			2	2	2
% change				0%	0%
Native American			0	0	0
				0%	0%
International			2	0	0
% change				-100%	0%
Unknown			0	0	0
% change				0%	0%
Total			13	10	15
Change from previous year				-23%	50%