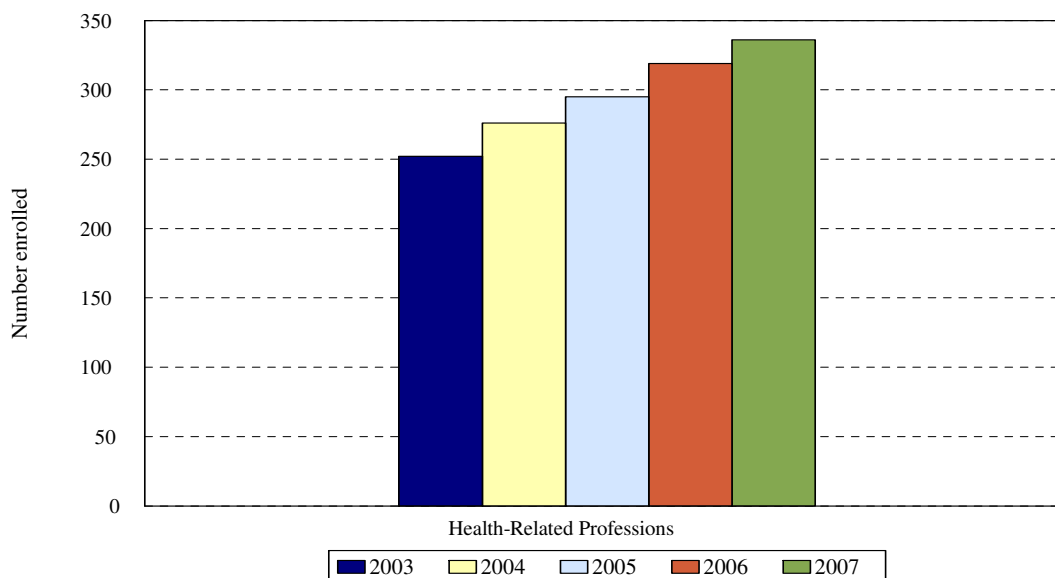
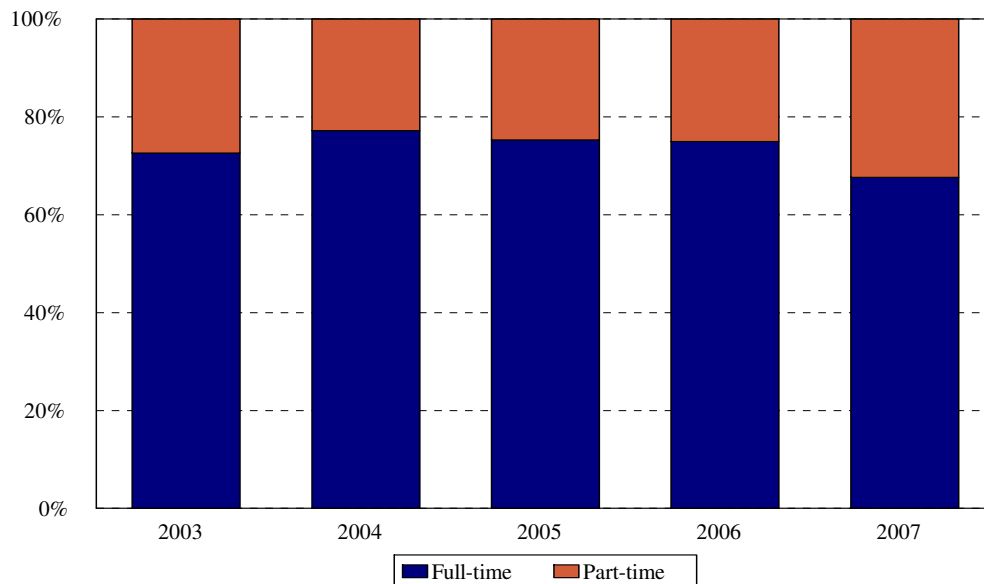


College of Health Related Professions Enrollment Fall 2003 to Fall 2007



Award	Program	Code	Year				
			2003	2004	2005	2006	2007
CERT	Health Information Management	1127	0	0	0	0	0
BS	Diagnostic Medical Imaging	DIMI	42	47	48	50	51
BS	Health Information Management, BS	1126	0	0	0	0	0
BS	Occupational Therapy	292	0	0	0		
BS	Physical Therapy (BS and BS/MS)	PTBS	27	35	32	17	26
BS	Physician's Assistant	PABS	64	68	69	75	66
	Non-matriculated	000	0	0	0	0	1
	Total Undergraduate		133	150	149	162	144
CAS	Midwifery- Direct Entry	964					
CERT	Midwifery- RN	965	3	1	1	3	
CERT	Nurse Midwifery	064					
MS	Midwifery- Direct Entry	967	13	13	8	4	
MS	Midwifery: RN	968	12	7	9	7	
MS	Midwifery (MS completion)	969	6	3	0	2	
MS	Midwifery	MWIF					17
MS	Occupational Therapy	OTMS	60	66	80	84	94
MS	Physical Therapy (BS and BS/MS)	PTMS	13	11	14	15	15
MS	Medical Informatics	MIMS	11	23	31	35	42
DPT	Doctor of Physical Therapy	DPT					16
	Non-matriculated	999	1	2	3	7	5
	Total Graduate		119	126	146	157	192
	Total		252	276	295	319	336
	Change from previous year		11%	9%	7%	8%	5%

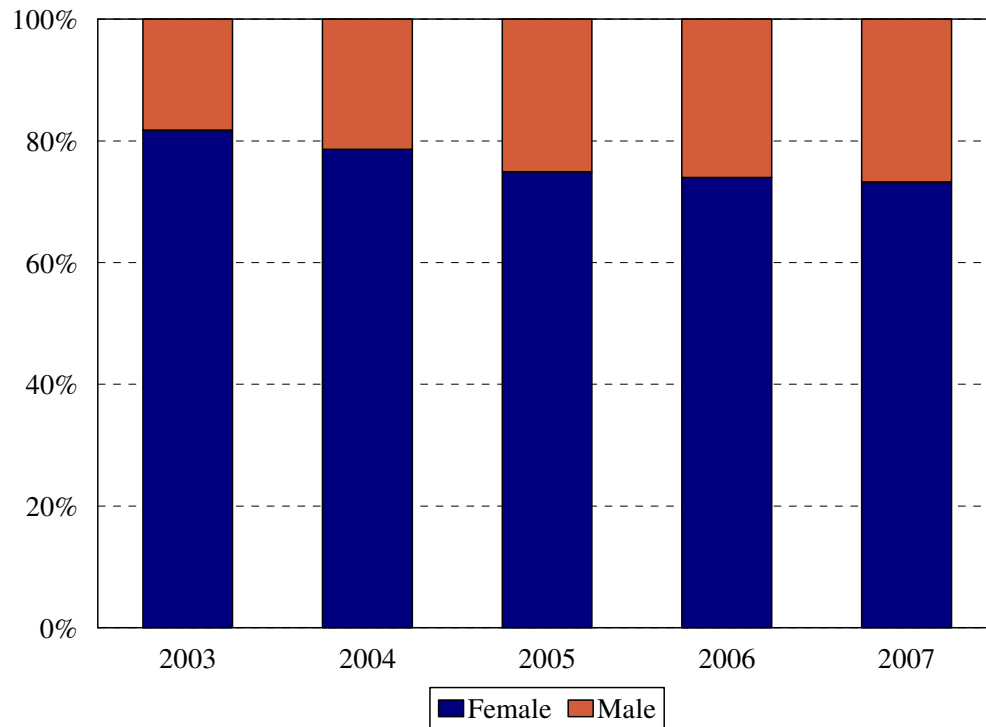
College of Health Related Professions
Enrollment by Full- and Part-time Status
Fall 2003 to Fall 2007



Program	Code	Year					
		2003			2004		
		FT	PT	%FT	FT	PT	%FT
Health Info. Mgt CERT	1127						
Diagnostic Medical Imaging	1056	37	5	88%	40	7	85%
Health Info. Mgt BS	1126						
Occupational Therapy	292						
Physical Therapy	294						
Physical Therapy: BS/MS	295	21	6	78%	32	3	91%
Physician's Assistant	252	55	9	86%	64	4	94%
Non-matriculated	000						
Total Undergraduate		113	20	85%	136	14	91%
Midwifery Direct Entry CAS	964						
Midwifery- RN	965	1	2	33%	0	1	0%
Midwifery- RN: CAS,MS	966	11	2	85%	10	3	77%
Midwifery- Direct Entry MS	967	5	7	42%	1	6	14%
Midwifery-RN MS	968	0	6	0%	0	3	0%
Midwifery (MS completion)	969	36	24	60%	44	22	67%
Occupational Therapy	970	12	1	92%	11	0	100%
Physical Therapy (BS/MS)	971	5	6	45%	11	12	48%
Non-matriculated	999	0	1	0%	0	2	0%
Total Graduate		70	49	59%	77	49	61%
Total		183	69	73%	213	63	77%
Change from previous year				-3%			4%

Program	Code	Year								
		2005			2006			2007		
		FT	PT	%FT	FT	PT	%FT	FT	PT	%FT
Health Info. Mgt CERT	1127									
Diagnostic Medical Imaging	DIMI	40	8	83%	42	8	84%	41	10	80%
Health Info. Mgt BS	1126									
Occupational Therapy	292									
Physical Therapy: BS	294									
Physical Therapy: BS/MS	PTBS	27	5	84%	14	3	82%	20	6	77%
Physician's Assistant	PTBS	60	9	87%	66	9	88%	56	10	85%
Non-matriculated	000							0	1	0%
Total Undergraduate		127	22	85%	142	20	88%	117	27	81%
Midwifery Direct Entry CAS	964									
Midwifery- RN	965	1	0	100%	3	0	100%			
Midwifery- Direct Entry MS	967	6	2	75%	3	1	75%			
Midwifery-RN MS	968	5	4	56%	4	3	57%			
Midwifery (MS completion)	969				0	2	0%			
Midwifery	MWIF							8	9	47%
Occupational Therapy	OTMS	58	22	73%	61	23	73%	55	39	59%
Physical Therapy (BS and BS/MS)	PTMS	14	0	100%	15	0	100%	14	1	93%
Medical Informatics	MIMS	11	20	35%	11	24	31%	23	19	55%
Doctor of Physical Therapy	DPT							16	0	100%
Non-matriculated	999	0	3	0%	0	7	0%	0	5	0%
Total Graduate		95	51	65%	97	60	62%	117	75	61%
Total		222	73	75%	239	80	75%	234	102	70%
Change from previous year				-2%			0%			-5%

College of Health Related Professions
Enrollment by Gender
Fall 2003 to Fall 2007

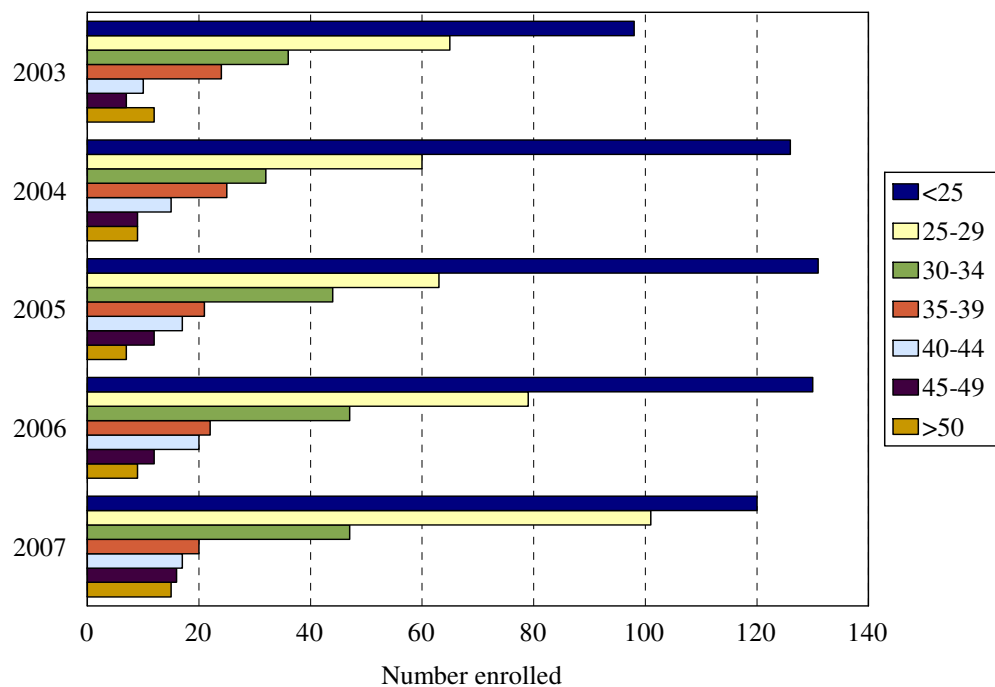


Gender	Year				
	2003	2004	2005	2006	2007
Female	206	217	221	236	246
Male	46	59	74	83	90
% Female	82%	78%	75%	74%	73%
Total	252	276	295	319	336

ENROLLMENT BY GENDER
COLLEGE OF HEALTH RELATED PROFESSIONS

Award	Program	Code	2003		2004		2005		2006		2007	
			F	M	F	M	F	M	F	M	F	M
CERT	Health Information Management	1127										
BS	Diagnostic Medical Imaging	DIMI	36	6	41	6	43	5	46	4	44	7
BS	Health Information Management	1126	0	0	0	0	0	0				
BS	Occupational Therapy	292	0	0	0	0	0	0				
BS	Physical Therapy: BS	294	0	0	0	0	0	0				
BS	Physical Therapy: BS/MS	295	16	11	20	15	17	15	8	9	13	13
BS	Physician's Assistant	252	46	18	49	19	47	22	55	20	48	18
	Non-matriculated	000									1	0
	Total Undergraduate		98	35	110	40	107	42	120	42	106	38
CAS	Midwifery- Direct Entry	964										
CAS	Midwifery- RN	965	3	0	1	0	1	0	3	0		
MS	Medical Informatics	MIMS	9	2	16	7	19	12	12	23	17	25
MS	Midwifery- Direct Entry	967	12	1	12	1	7	1	4	0		
MS	Midwifery-RN MS	968	12	0	7	0	9	0	7	0		
MS	Midwifery (MS completion)	969	6	0	3	0	0	0	2	0		
MS	Midwifery	MWIF									17	0
MS	Occupational Therapy	OTMS	56	4	60	6	67	13	72	12	83	11
MS	Physical Therapy (BS/MS)	PTMS	10	3	6	5	8	6	9	6	8	7
DPT	Doctor of Physical Therapy	DPT									9	7
	Non-matriculated	999	0	1	2	0	3	0	7	0	3	2
	Total Graduate		108	11	107	19	114	32	116	41	140	52
	Total		206	46	217	59	221	74	236	83	246	90
	Change from previous year		7%	28%	5%	22%	2%	20%	7%	12%	4%	8%

Total Enrollment by Age Level Fall 2003 to Fall 2007

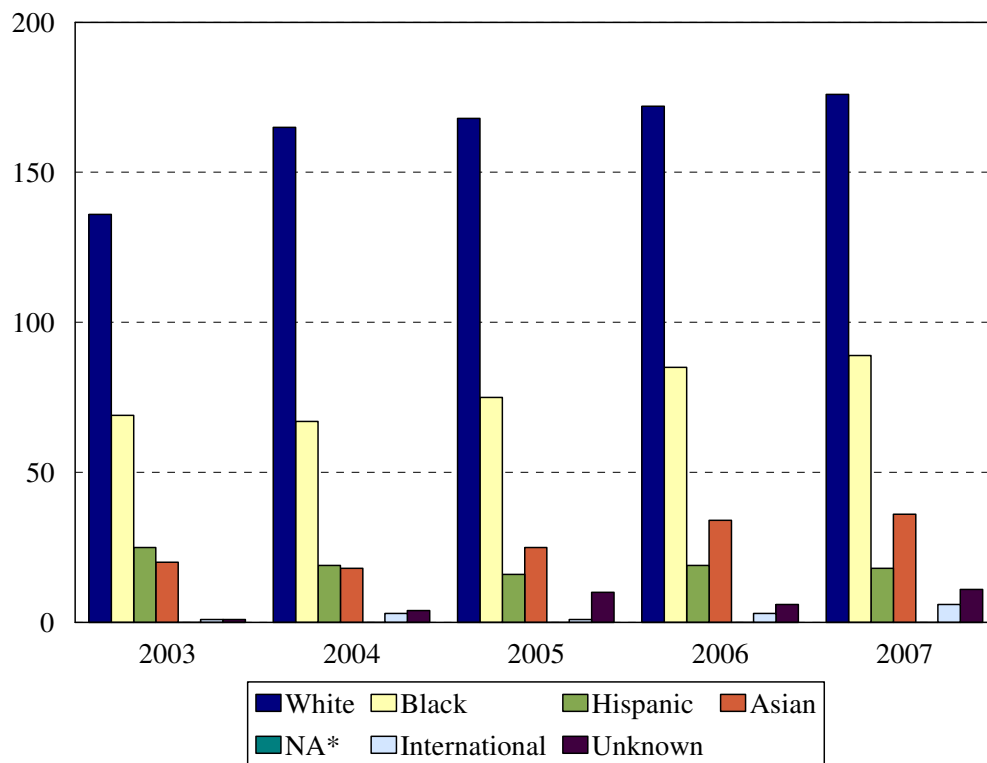


Age	Year									
	2003		2004		2005		2006		2007	
	N	%	N	%	N	%	N	%	N	%
Under 25	98	39%	126	46%	131	44%	130	41%	120	36%
25-29	65	26%	60	22%	63	21%	79	25%	101	30%
30-34	36	14%	32	12%	44	15%	47	15%	47	14%
35-39	24	10%	25	9%	21	7%	22	7%	20	6%
40-44	10	4%	15	5%	17	6%	20	6%	17	5%
45-49	7	3%	9	3%	12	4%	12	4%	16	5%
50 and over	12	5%	9	3%	7	2%	9	3%	15	4%
Median age	26		25		26		26		26	
Age range	19-68		19-62		19-63		19-64		19-64	
Total	252		276		295		319		336	

**MEDIAN AGE BY PROGRAM
COLLEGE OF HEALTH RELATED PROFESSIONS**

Award	Program	Code	Median Age				
			2003	2004	2005	2006	2007
CERT	Health Information Management	1127					
BS	Diagnostic Medical Imaging	DIMI	27.0	25.0	26.0	26.0	28.0
BS	Health Information Management, BS	1126					
BS	Occupational Therapy	292					
BS	Physical Therapy: BS	294					
BS/MS	Physical Therapy: BS/MS	PTBS	24.0	23.0	22.5	23.0	24.0
BS	Physician's Assistant	PABS	26.0	25.5	25.0	25.0	25.0
	Non-matriculated	000					34.0
	Total Undergraduate		26.0	25.0	25.0	26.0	25.5
CAS	Midwifery- Direct Entry	964					
CAS	Midwifery- RN	965	31.0	32.0	30.0	31.0	
CAS	Midwifery						43.0
MS	Medical Informatics	MIMS	34.0	36.0		32.0	33.0
MS	Midwifery- Direct Entry	967	26.0	31.0	33.0	29.5	
MS	Midwifery-RN MS	968	27.0	28.0	27.0	28.0	
MS	Midwifery (MS completion)	969	52.0	29.0		40.5	
MS	Midwifery	MWIF					41.0
MS	Occupational Therapy	OTMS	23.0	23.0	24.0	24.5	
MS	Physical Therapy (BS and BS/MS)	PTMS	25.0	26.0	26.0	24.0	25.0
DPT	Doctor of Physical Therapy	DPT					26.0
	Non-matriculated	999	35.0	56.0	33.0	46.0	36.0
	Total Graduate		26.0	26.0	26.0	28.0	28.0
	Total		26.0	25.0	26.0	26.0	26.5
	Change from previous year		0	-1	1	0	.5

College of Health Related Professions
Enrollment by Ethnic Group
Fall 2003 to Fall 2007



*Native American

Ethnic Group (IPEDS Categories)	Year									
	2003		2004		2005		2006		2007	
	N	%	N	%	N	%	N	%	N	%
White	136	54%	165	60%	168	57%	172	54%	176	52%
Black	69	27%	67	24%	75	25%	85	27%	89	26%
Hispanic	25	10%	19	7%	16	5%	19	6%	18	5%
Asian/Pacific Islander	20	8%	18	7%	25	8%	34	11%	36	11%
Native American	0	0%	0	0%	0		0	0%	0	0%
International	1	0%	3	1%	1	<1%	3	1%	6	2%
Unknown	1	0%	4	1%	10	3%	6	2%	11	3%
% Black and Hispanic		37%		31%		30%		33%		
Total	252		276		295		319		336	

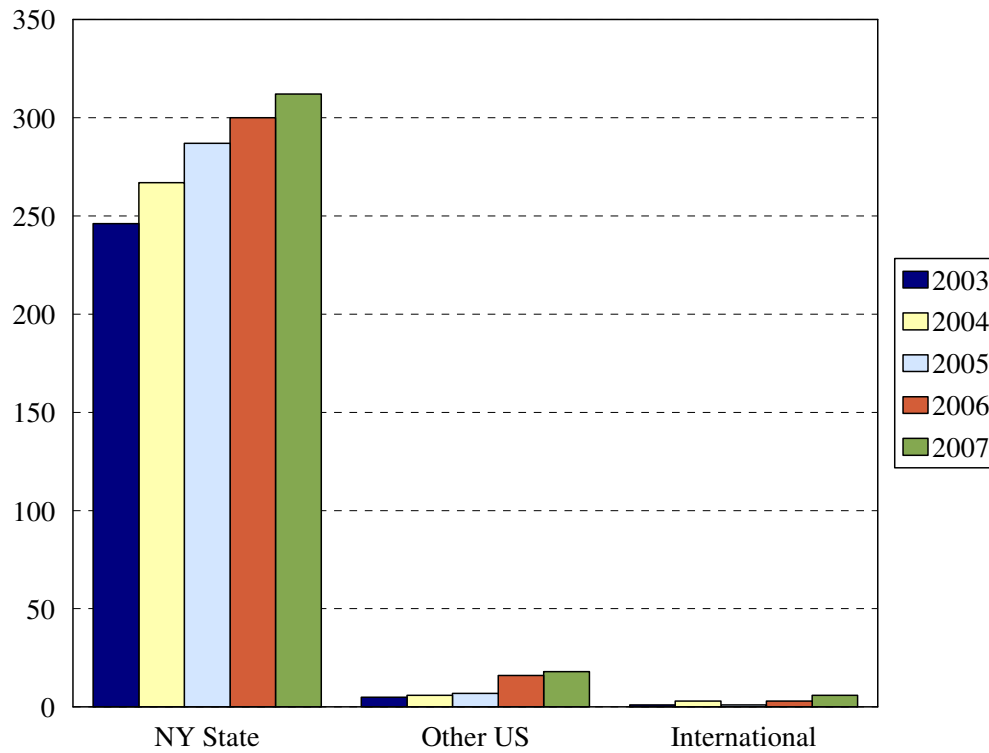
- The Integrated Postsecondary Education Data Set (IPEDS) ethnic categories are those used by the U.S. Department of Education.

**ENROLLMENT BY ETHNIC GROUP BY PROGRAM
COLLEGE OF HEALTH RELATED PROFESSIONS**

Program		White	Black	Hispanic	Asian	NA	Inter.	Unknown	White	Black	Hispanic	Asian	NA	Inter.	Unknown
		2003							2004						
Health Info. Management Cert.	1127														
Diagnostic Medical Imaging BS	1056	25	6	2	8	0	1	0	30	7	1	5	0	2	2
Health Information Mgt BS	1126														
Occupational Therapy BS	292														
Physical Therapy BS	294														
Physical Therapy BS/MS	295	16	6	3	1	0	0	1	24	7	3	0	0	0	1
Physician's Assistant BS	252	21	30	8	5	0	0	0	29	26	6	7	0	0	0
Non-matriculated	999														
Total Undergraduate		62	42	13	14	0	1	1	83	40	10	12	0	2	3
Midwifery- Direct Entry CAS	964														
Midwifery- RN CAS	965	1	1	1	0	0	0	0	0	0	1	0	0	0	0
Medical Informatics	975	3	6	0	2	0	0	0	7	13	0	2	0	1	0
Midwifery- Direct Entry MS	967	4	5	3	1	0	0	0	5	3	3	1	0	0	1
Midwifery-RN MS	968	8	3	1	0	0	0	0	5	1	1	0	0	0	0
Midwifery (MS completion)	969	2	2	2	0	0	0	0	1	1	1	0	0	0	0
Occupational Therapy MS	970	49	7	3	1	0	0	0	56	7	1	2	0	0	0
Physical Therapy (BS & BS/MS)	971	7	3	2	1	0	0	0	7	2	1	1	0	0	0
Non-matriculated	999				1				1	0	1	0	0	0	0
Total Graduate		74	27	12	6	0	0	0	82	27	9	6	0	1	1
Total		136	69	25	20	0	1	1	165	67	19	18	0	3	4

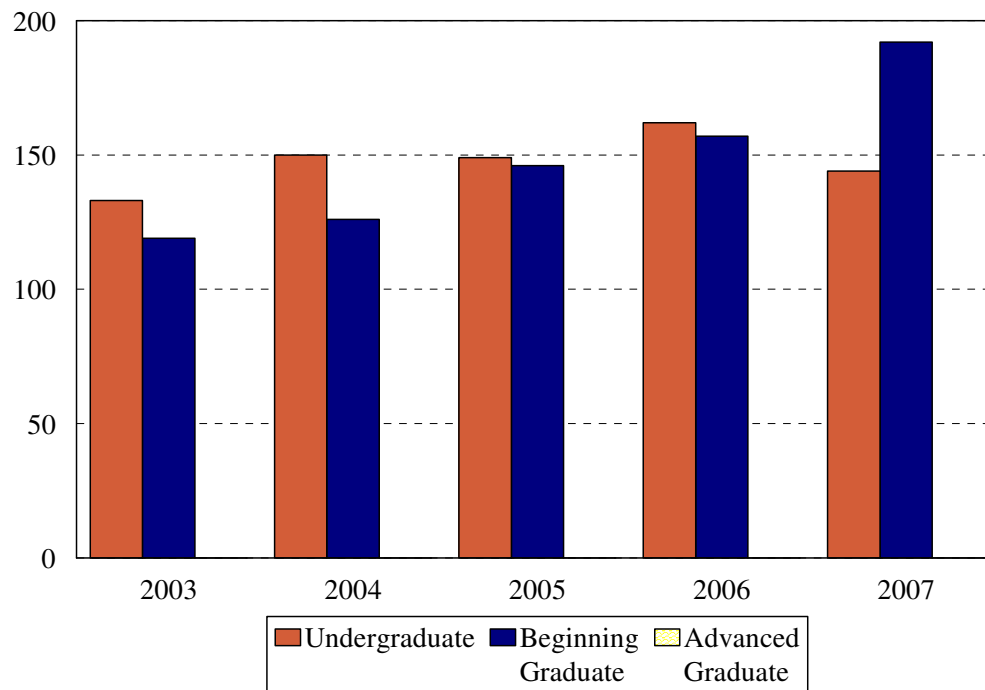
	White	Black	Hispanic	Asian	NA	Inter.	Unknown	White	Black	Hispanic	Asian	NA	Inter.	Unknown	White	Black	Hispanic	Asian	NA	Inter.	Unknown	
	2005							2006							2007							
Undergraduate	1127																					
	DIMI	26	10	3	4	0	1	4	27	6	4	7	0	1	5	32	8	3	3	0	1	4
	1126																					
	292																					
	294																					
	PTBS	21	5	4	2	0	0	0	10	3	2	2	0	0	0	14	5	1	5	0	0	1
	PABS	33	22	4	10	0	0	0	33	28	2	11	0	1	0	26	22	4	12	0	1	1
	000															1	0	0	0	0	0	0
Total	80	37	11	16	0	1	4	86	39	9	21	0	2	5	73	35	8	20	0	2	6	
Graduate	964																					
	965	1	0	0	0	0	0	1	2	0	0	0	0	0								
	MWIC														0	2	1	0	0	0	0	0
	MIMS	8	18	0	3	0	0	2	5	24	0	5	0	1	0	5	28	0	5	0	3	1
	967	4	1	1	1	0	0	1	2	1	0	1	0	0								
	968	5	3	1	0	0	0	0	3	3	1	0	0	0								
	969								1	1	0	0	0	0								
	MWIF														9	3	2	2	0	0	0	1
	OTMS	61	10	2	5	0	0	2	61	11	4	7	0	0	1	64	14	5	8	0	1	2
	PTMS	9	3	1	0	0	0	1	11	2	2	0	0	0	0	10	2	2	1	0	0	0
	DPT														14	2	0	0	0	0	0	0
	999	0	3	0	0	0	0	0	2	2	3	0	0	0	0	1	3	0	0	0	0	1
Total	88	38	5	9	0	0	6	86	46	10	13	0	1	1	103	54	10	16	0	4	5	
Total	168	75	16	25	0	1	10	172	85	19	34	0	3	6	176	89	18	36	0	6	11	

College of Health Related Professions
Enrollment by Permanent Residence
Fall 2003 to Fall 2007



Residency	Year									
	2003		2004		2005		2006		2007	
	N	% of total	N	% of total	N	% of total	N	% of total	N	% of total
New York State	246	98%	267	97%	287	97%	300	94%	312	93%
New York City	220	87%	229	83%	252	85%	264	83%	272	81%
Bronx	8	3%	8	3%	6	2%	11	3%	12	4%
Kings (Brooklyn)	146	58%	158	57%	173	59%	171	54%	174	52%
Manhattan	19	8%	14	5%	16	5%	20	6%	25	7%
Queens	41	16%	43	16%	45	15%	51	16%	53	16%
Richmond (Staten I.)	6	2%	6	2%	12	4%	11	3%	8	2%
Other U.S.	5	2%	6	2%	7	2%	16	5%	18	5%
International	1	0%	3	1%	1	<1%	3	1%	6	2%
Total	252		276		295		319		336	

College of Health Related Professions
Enrollment by Student Level
Fall 2003 to Fall 2007



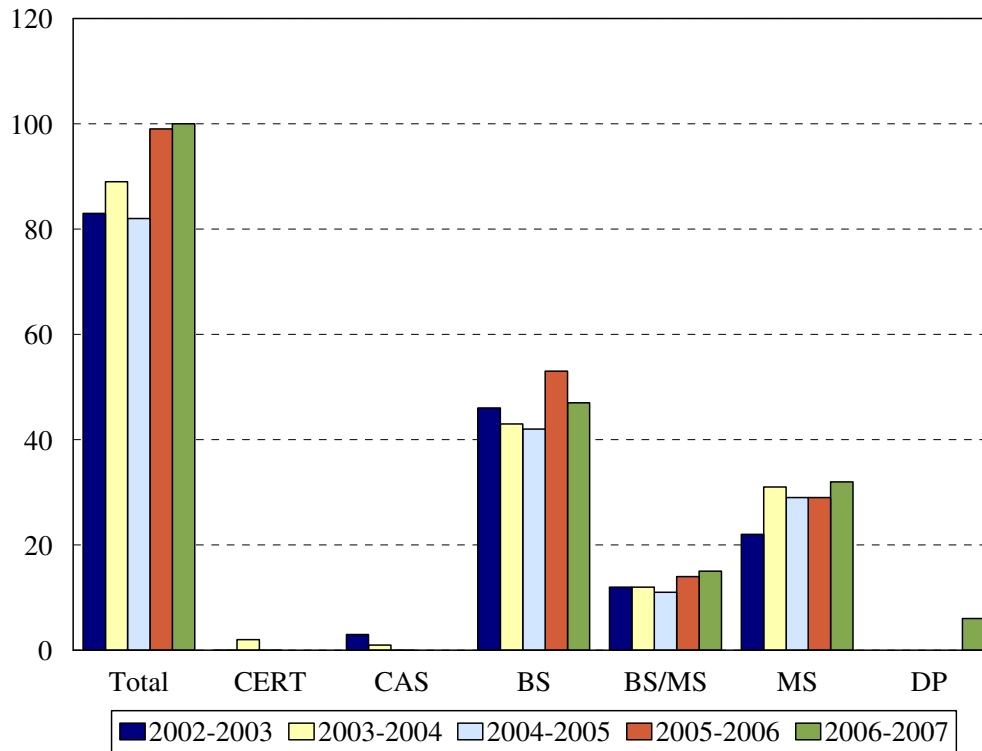
Student Level	Year									
	2003		2004		2005		2006		2007	
	N	%	N	%	N	%	N	%	N	%
Undergraduate	119	47%	150	54%	149	51%	162	51%	144	43%
Beginning Graduate	133	53%	126	46%	146	49%	157	49%	192	57%
Total	252		276		295		319		336	

ENROLLMENT BY STUDENT LEVEL
COLLEGE OF HEALTH RELATED PROFESSIONS

Program	Code	2003		2004		2005	
		Undergraduate	Beginning Graduate	Undergraduate	Beginning Graduate	Undergraduate	Beginning Graduate
Health Info. Mgt CERT	1127						
Diagnostic Medical Imaging	1056	42		47		48	
Health Info. Mgt BS	1126						
Occupational Therapy	292						
Physical Therapy	294						
Physical Therapy (BS/MS)	295	27		35		32	
Physician's Assistant	252	64		68		69	
Non-matriculated undergrad.	999						
Midwifery- RN	965		3		1		1
Nurse Midwifery CERT	964						
Medical Informatics	975		11		23		31
Midwifery- Direct Entry MS	967		13		13		8
Midwifery-RN MS	968		12		7		9
Midwifery (MS completion)	969		6		3		
Occupational Therapy-MS	970		60		6		80
Physical Therapy (BS/MS)	971		13		11		14
Non-matriculated grad.	999		1		2		3
Total		133	119	150	126	149	146
Change from previous year		3%	20%	13%	6%	-1%	16%

Program	Code	2006		2007	
		Undergraduate	Beginning Graduate	Undergraduate	Beginning Graduate
Health Info. Mgt CERT	1127				
Diagnostic Medical Imaging	DIMI	50		51	
Health Info. Mgt BS	1126				
Occupational Therapy	292				
Physical Therapy	294				
Physical Therapy (BS/MS)	PTBS	17		26	
Physician's Assistant	PABS	75		66	
Non-matriculated undergrad.	000			1	
Midwifery- RN	965		3		
Nurse Midwifery CERT	964				
Midwifery CAS	MWIC				3
Medical Informatics	MIMS		35		42
Midwifery- Direct Entry MS	967		4		
Midwifery-RN MS	968		7		
Midwifery (MS completion)	969		2		
Midwifery	MWIF				17
Occupational Therapy-MS	OTMS		84		94
Physical Therapy (BS/MS)	PTMS		15		15
Non-matriculated grad.	999		7		5
Total		162	157	144	192
Change from previous year		9%	8%	-11%	22%

College of Health Related Professions
Degrees Granted by Level
2002-2003 to 2006-2007



Degrees	Code	Year				
		2002-03	2003-04	2004-05	2005-06	2006-07
Health Info. Mgt CERT	1127					
Diagnostic Medical Imaging BS	DIMI	15	16	20	21	18
Health Info. Mgt BS	1126	2	0	0	0	0
Occupational Therapy BS	292	4	0	0	0	0
Physical Therapy BS	PTBS	0	0	0	0	0
Physical Therapy BS/MS	PTMS	12	12	11	14	15
Physician's Assistant BS	PABS	25	27	22	32	29
Nurse Midwifery CERT	964	2	2			
Midwifery Direct Entry CERT	967					
Midwifery Direct Entry MS	967	2	4	5	4	4
Midwifery Direct Entry CAS	964					
Midwifery- RN CAS	965	1	1			
Midwifery- RN MS	968	3	3	3	0	2
Midwifery- RN MS	969	5	2	3	0	1
Occupational Therapy MS	970	12	22	18	20	22
Medical Informatics	975					
Doctor of Physical Therapy	DPT				5	6
Total		83	89	82	96	100
Change from previous year		-28%	7%	-8%	17%	4%

DEGREES EARNED BY ETHNIC GROUP
COLLEGE OF HEALTH RELATED PROFESSIONS

Ethnic Group	Year				
	2002-03	2003-04	2004-05	2005-06	2006-07
White	50	46	53	52	68
% change	-25%	-9%	-13%	-2%	31%
Black	18	23	18	30	17
% change	-33%	22%	-22%	67%	-43%
Hispanic	7	13	6	6	6
% change	-30%	46%	-54%	0%	0%
Asian	8	7	3	5	8
% change	0%	-14%	-57%	67%	60%
Native American				0	0
% change					
International			1	0	0
% change				-100%	
Unknown				3	1
% change					-67%
Total	83	89	82	96	100
Change from previous year	-28%	7%	-8%	17%	4%