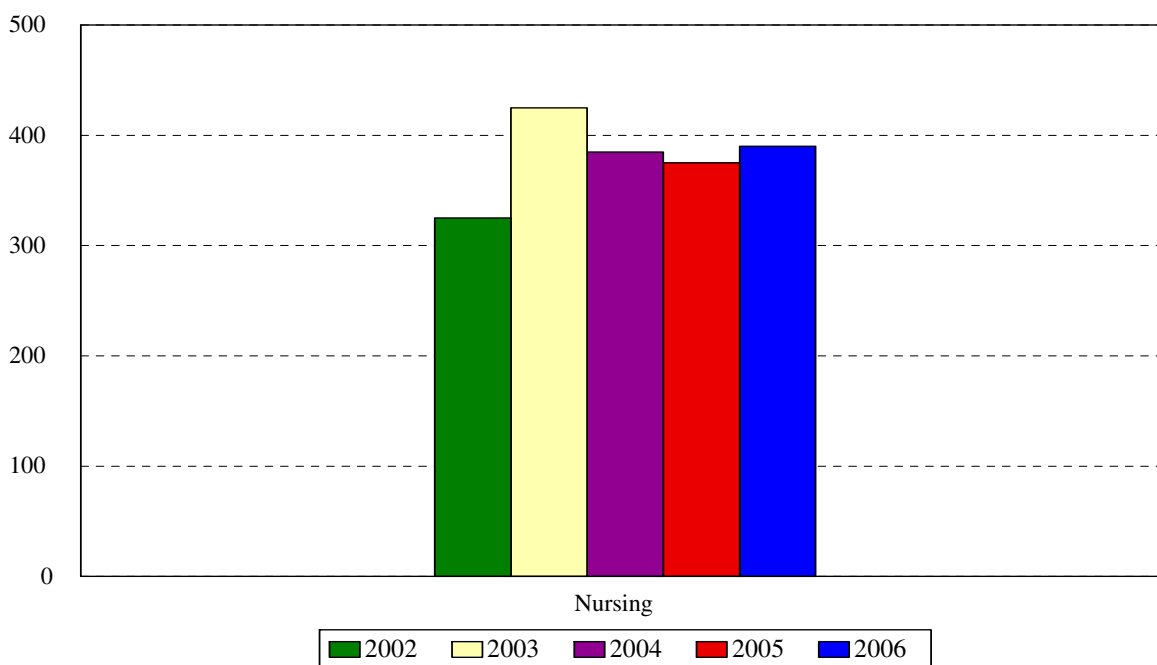


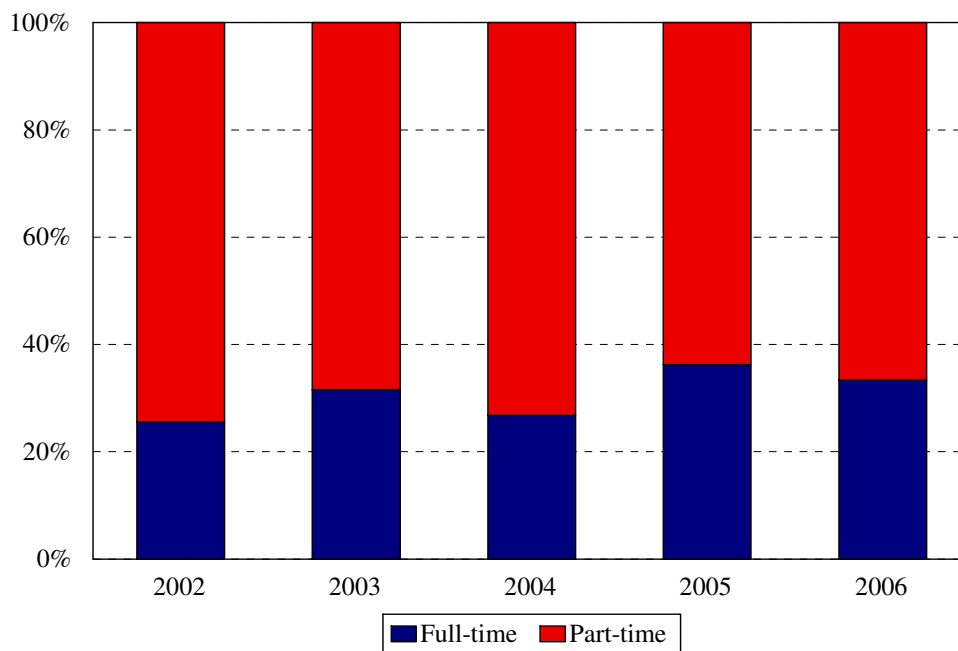
College of Nursing Enrollment Fall 2002 to Fall 2006



Award	Program	Code	Year				
			2002	2003	2004	2005	2006
BS	Accelerated Nursing	1143		29	38	47	50
BS	RN Completion	192	133	187	166	147	132
	Non-matriculated undergraduate	000	0	3	0	2	6
	Total Undergraduates		133	219	204	196	188
CAS	Family Nurse Practitioner	920	4	2	1	2	3
CAS	Women's Nurse Practitioner	930	1		1		
MS	Clinical Nurse Specialist	900					
MS	Clinical Nurse Spec. Adult	901	11	7	14	23	30
MS	Clinical Nurse Spec. HRMI	902	2	6	5	2	6
MS	Family Nurse Practitioner	921	60	70	61	77	89
MS	Nurse Anesthesia: KCH	940	35	44	40	36	37
MS	Nurse Anesthesia: Harlem	941	30	37	36	25	14
MS	Nurse Midwifery Completion	950	1	1			
MS	Nurse Midwifery	966	10	8	5	9	11
MS	Women's Nurse Practitioner	931	5	8	5	5	12
	Non-matriculated	999	33	23	13	0	0
	Total Graduate		192	206	181	179	202
	Total		325	425	385	375	390
	Change from previous year		-6%	24%	-10%	-3%	4%

College of Nursing totals reflect the deactivation of the Generic Nursing program, beginning in 1997.

College of Nursing
Enrollment by Full- and Part-time Status
Fall 2002 to Fall 2006

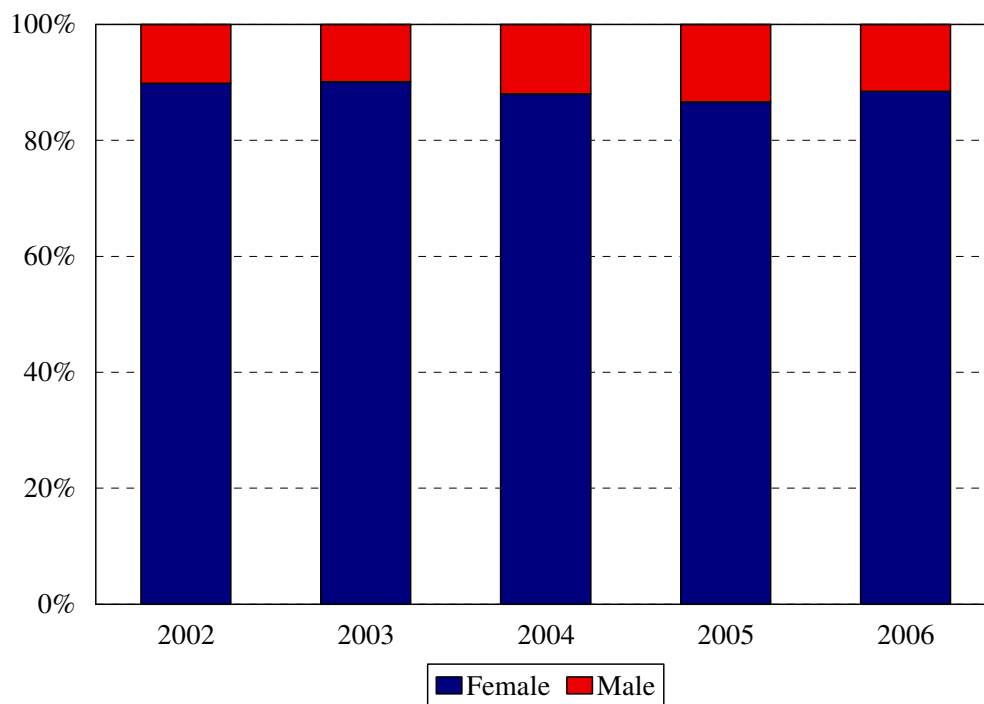


Program	Code	Year								
		2002			2003			2004		
		FT	PT	%FT	FT	PT	%FT	FT	PT	%FT
Accelerated Nursing	1143				29	0	100%	33	5	87%
RN Completion BS	192	31	102	23%	45	142	24%	19	147	11%
Non-matriculated	000				0	3	0%			
Total Undergraduates		31	102	23%	74	145	34%	52	152	25%
Family Nurse Practitioner CAS	920	0	4	0%	0	2	0%	0	1	0%
Women's Nurse Practitioner CAS	930	0	1	0%				0	1	0%
Clinical Nurse Specialist MS	900									
Clinical Nurse Spec. Adult MS	901	3	8	27%	1	6	14%	0	14	0%
Clinical Nurse Spec. HRMI MS	902	0	2	0%	1	5	17%	0	5	0%
Family Nurse Practitioner MS	921	6	54	10%	11	59	16%	10	51	16%
Nurse Anesthesia MS: Kings	940	18	17	51%	20	24	45%	20	20	50%
Nurse Anesthesia MS: Harlem	941	16	14	53%	22	15	59%	19	17	53%
Nurse Midwifery Completion MS	950	0	1	0%	0	1	0%			
Nurse Midwifery: RN MS	966	7	3	70%	5	3	63%	2	3	40%
Women's Nurse Practitioner MS	931	1	4	20%	0	8	0%	0	5	0%
Non-matriculated graduate	999	1	32	3%	0	23	0%	0	13	0%
Total Graduate		52	140	27%	60	146	29%	51	130	28%
Total		83	242	26%	134	290	32%	103	282	27%
Change from previous year				4%			6%			-5%

Program	Code	Year					
		2005			2006		
		FT	PT	%FT	FT	PT	%FT
Accelerated Nursing	1143	46	1	98%	39	11	78%
RN Completion BS	192	30	117	20%	31	101	23%
Non-matriculated	000	0	2	0%	0	6	0%
Total Undergraduates		76	120	39%	70	118	37%
Family Nurse Practitioner CAS	920	0	2		2	1	67%
Women's Nurse Practitioner CAS	930						
Clinical Nurse Specialist MS	900						
Clinical Nurse Spec. Adult MS	901	4	19	17%	5	25	17%
Clinical Nurse Spec. HRMI MS	902	0	2	0%	3	3	50%
Family Nurse Practitioner MS	921	16	61	21%	24	65	27%
Nurse Anesthesia MS: Kings	940	20	16	56%	13	24	35%
Nurse Anesthesia MS: Harlem	941	14	11	56%	2	12	14%
Nurse Midwifery Completion MS	950						
Nurse Midwifery: RN MS	966	5	4	56%	7	4	64%
Women's Nurse Practitioner MS	931	1	4	20%	4	8	33%
Non-matriculated	999						
Total Graduate		60	119	34%	60	142	30%
Total		136	239	36%	130	260	33%
Change from previous year				9%			-3%

College of Nursing Enrollment by Gender

Fall 2002 to Fall 2006

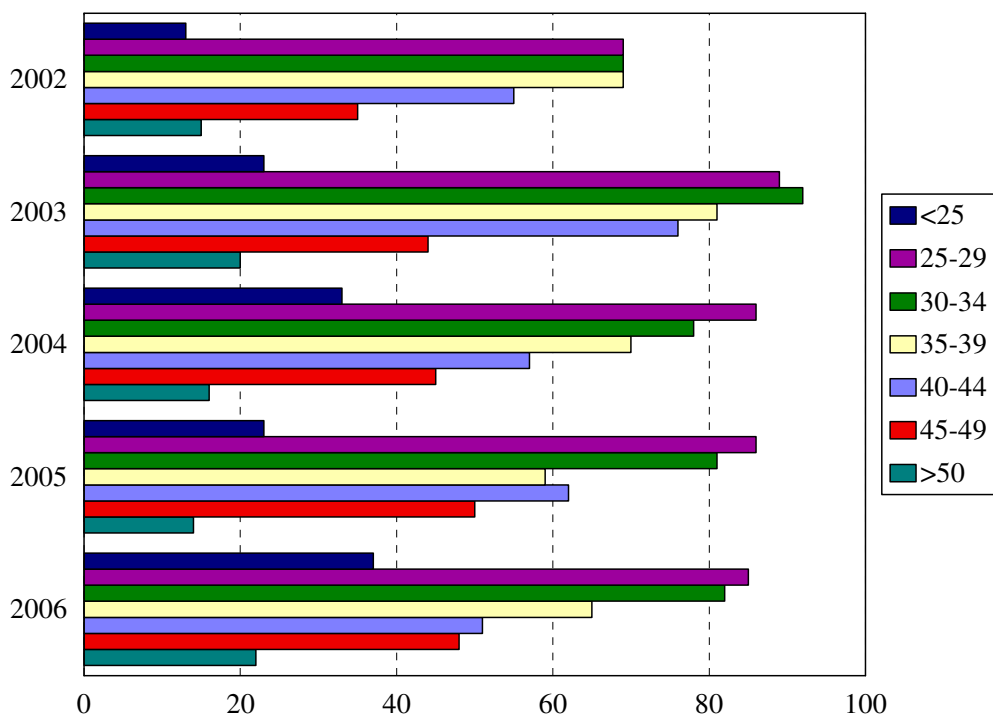


Gender	Year				
	2002	2003	2004	2005	2006
Female	292	383	339	325	345
Male	33	42	46	50	45
% Female	90%	90%	88%	87%	88%
Total	325	425	385	375	390

COLLEGE OF NURSING
ENROLLMENT BY GENDER

Program	Code	2002		2003		2004		2005		2006	
		F	M	F	M	F	M	F	M	F	M
Accelerated Nursing BS	1143			23	6	34	4	38	9	42	8
RN Completion BS	192	123	10	174	13	155	11	138	9	122	10
Non-matriculated	000			3	0			1	1	5	1
Total Undergraduates		123	10	200	19	189	15	177	19	169	19
Family Nurse Practitioner CAS	920	4	0	2	0	1	0	2	0	3	0
Women's Nurse Practitioner CAS	930	1	0			1	0				
Clinical Nurse Specialist MS	900										
Clinical Nurse Spec. Adult MS	901	10	1	7	0	12	2	20	3	27	3
Clinical Nurse Spec. HRMI MS	902	2	0	6	0	5	0	2	0	6	0
Family Nurse Practitioner MS	921	56	4	68	2	56	5	71	6	82	7
Nurse Anesthesia MS	940	29	6	37	7	30	10	25	11	26	11
	941	20	10	24	13	25	11	14	11	9	5
Nurse Midwifery Completion MS	950	1	0	1	0						
Nurse Midwifery: RN MS	966	10	0	8	0	5	0	9	0	11	0
Women's Nurse Practitioner MS	931	5	0	8	0	5	0	5	0	12	0
Non-matriculated	999	31	2	22	1	10	3	0	0		
Total Graduate		169	23	183	23	150	31	148	31	176	26
Total		292	33	383	42	339	46	325	50	345	45
Change from previous year		-4%	-20%	31%	27%	-13%	9%	-4%	9%	6%	-10%

College of Nursing Enrollment by Age Level Fall 2002 to Fall 2006

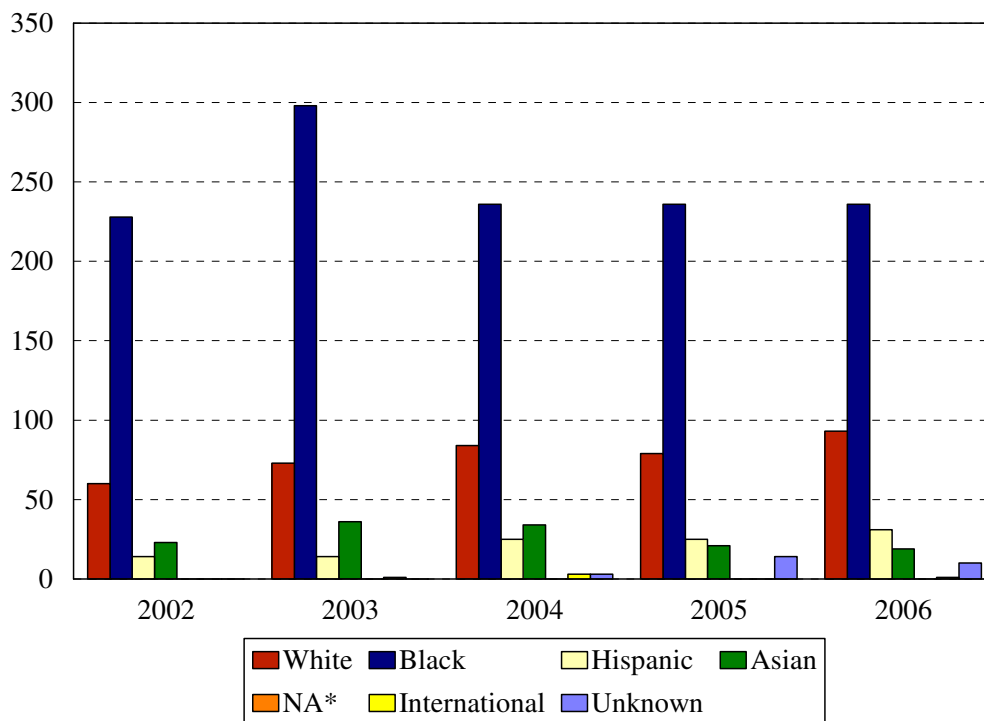


Age	Year									
	2002		2003		2004		2005		2006	
	N	%	N	%	N	%	N	%	N	%
Under 25	13	4%	23	5%	33	9%	23	6%	37	9%
25-29	69	17%	89	21%	86	22%	86	23%	85	22%
30-34	69	20%	92	22%	78	20%	81	22%	82	21%
35-39	69	21%	81	19%	70	18%	59	16%	65	17%
40-44	55	16%	76	18%	57	15%	62	17%	51	13%
45-49	35	12%	44	10%	45	12%	50	13%	48	12%
50 and over	15	5%	20	5%	16	4%	14	4%	22	6%
Age range	21-59		21-55		18-59		19-55		19-58	
Median age	36		35		34		34		34	
Total	325		425		385		375		390	

COLLEGE OF NURSING
MEDIAN AGE BY PROGRAM

Award	Program	Code	Median Age				
			2002	2003	2004	2005	2006
BS	Accelerated Nursing BS	1143		30.0	28.5	30.0	28.0
BS	RN Completion BS	192	35.0	36.0	35.5	35.0	34.0
	Non-matriculated	000		34.0		38.0	34.0
	Total Undergraduate		35.0	35.0	34.5	33.0	33.0
CAS	Family Nurse Practitioner	920		50.0	40.0	46.0	40.0
CAS	Women's Nurse Practitioner	930			47.0		
MS	Clinical Nurse Specialist	900					
MS	Clinical Nurse Spec. Adult	901	39.0	40.0	37.5	37.0	39.5
MS	Clinical Nurse Spec. HRMI	902	41.0	41.0	44.0	39.0	28.5
MS	Family Nurse Practitioner	921	36.5	38.0	38.0	39.0	38.0
MS	Nurse Anesthesia : KCH	940	33.0	32.0	32.0	34.0	35.0
MS	Nurse Anesthesia: Harlem	941	34.0	34.0	30.5	31.0	31.5
MS	Nurse Midwifery Completion	950	44.0	45.0			
MS	Nurse Midwifery: RN	966	31.0	31.0	30.0	31.0	29.0
MS	Women's Nurse Practitioner	931	43.0	32.0	28.0	32.0	32.0
	Non-matriculated	999	34.0	31.0	37.0		
	Total Graduate		36.0	35.0	34.0	35.0	35.0
	Total		36.0	35.0	34.0	34.0	34.0
	Change from previous year		0	-1	-1	0	0

College of Nursing
Enrollment by Ethnic Group
Fall 2002 to Fall 2006



*Native American

Ethnic Group (IPEDS Categories)	Year									
	2002		2003		2004		2005		2006	
	N	%	N	%	N	%	N	%	N	%
White	60	18%	76	18%	84	22%	79	21%	93	24%
Black	228	70%	298	70%	236	61%	236	63%	236	61%
Hispanic	14	4%	14	3%	25	6%	25	7%	31	8%
Asian/Pacific Islander	23	7%	36	8%	34	9%	21	6%	19	5%
Native American										
International			1	<1%	3	1%	0	0%	1	<1%
Unknown					3	1%	14	4%	10	3%
<i>% Black and Hispanic</i>		74%		73%		67%		70%		68%
Total	325		425		385		375		390	

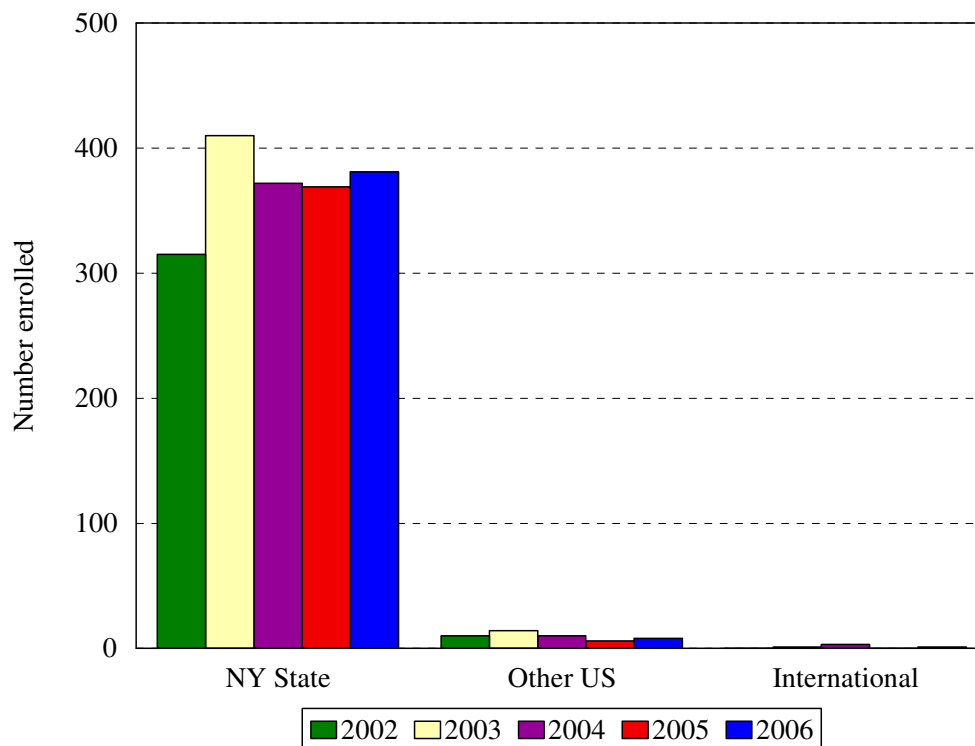
- The Integrated Postsecondary Education Data Set (IPEDS) ethnic categories are those used by the U.S. Department of Education.

ENROLLMENT BY ETHNIC GROUP BY PROGRAM
COLLEGE OF NURSING

Program	White	Black	Hispanic	Asian	International	Unknown	White	Black	Hispanic	Asian	International	Unknown
	2002						2003					
1143							6	22	0	1	0	0
192	20	107	5	1	0	0	25	149	5	7	1	0
000							1	2	0	0	0	0
Total Und.	20	107	5	1	0	0	32	173	5	8	1	0
920	2	2	0	0	0	0	1	1	0	0	0	0
930		1										
900												
901	2	8	1	0	0	0		6	1			
902	0	2	0	0	0	0	0	5	0	1	0	0
921	13	39	5	3	0	0	13	49	6	2	0	0
940	7	21	2	5	0	0	16	20	2	6	0	0
941	4	14	1	11	0	0	7	14	0	16	0	0
950				1						1		
966	3	7	0	0	0	0	3	5	0	0	0	0
931	1	4	0	0	0	0	1	6	0	1	0	0
999	8	23	0	2	0	0	3	19	0	1	0	0
Total Grad.	40	121	9	22	0	0	44	125	9	28	1	0
Total	60	228	14	23	0	0	76	298	14	36	1	0

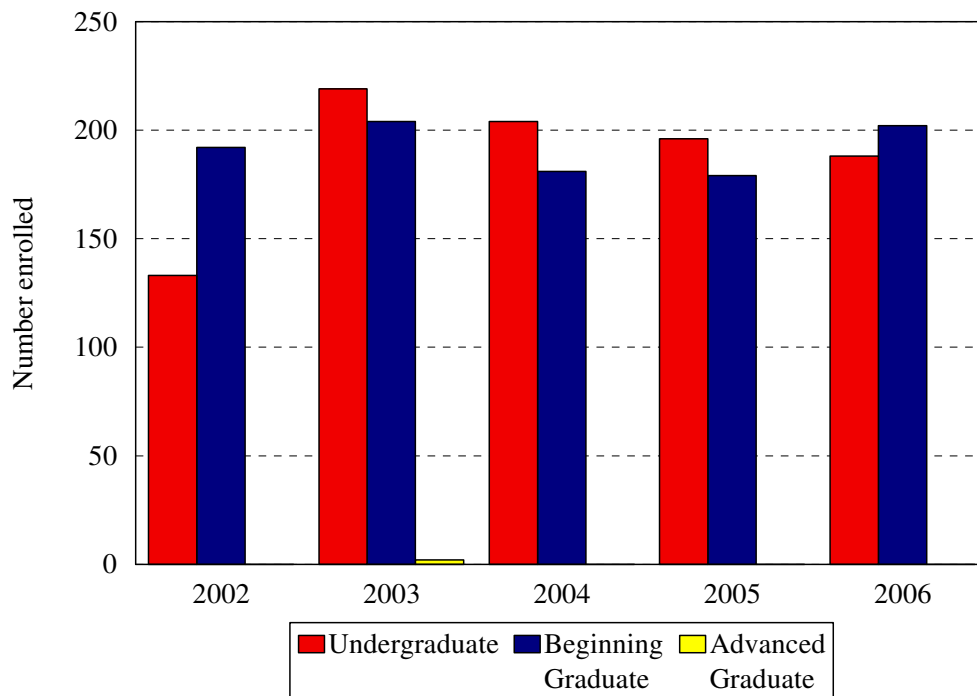
Program	White	Black	Hispanic	Asian	International	Unknown	White	Black	Hispanic	Asian	International	Unknown	White	Black	Hispanic	Asian	International	Unknown
	2004						2005						2006					
1143	22	7	2	5	2	0	19	20	5	3	0	0	21	21	3	5	0	0
192	14	132	9	7	1	3	11	113	7	6	0	10	29	85	11	4	1	2
000							1	1	0	0	0	0	2	3	1	0	0	0
Total Und.	36	139	11	12	3	3	31	134	12	9	0	10	52	109	15	9	1	2
920	0	1	0	0	0	0	0	2	0	0	0	0	0	2	0	0	0	1
930	0	1	0	0	0	0												
900																		
901	0	14	0	0	0	0	2	20	0	1	0	0	3	24	0	1	0	2
902	0	4	1	0	0	0	0	2	0	0	0	0	0	6	0	0	0	0
921	12	42	4	3	0	0	15	51	5	2	0	4	13	66	5	2	0	3
940	20	12	4	4	0	0	19	11	4	2	0	0	14	14	4	4	0	1
941	12	8	4	12	0	0	8	6	4	7	0	0	6	2	4	2	0	0
950																		
966	0	5	0	0	0	0	3	6	0	0	0	0	4	5	1	1	0	0
931	1	2	1	1	0	0	1	4	0	0	0	0	1	8	2	0	0	0
999	3	8	0	2	0	0												
Total Grad.	48	97	14	22	0	0	48	102	13	12	0	4	41	127	16	10	0	8
Total	84	236	25	34	3	3	79	236	25	21	0	14	93	236	31	19	1	10

College of Nursing
Enrollment by Permanent Residence
Fall 2002 to Fall 2006



Residency	Year									
	2002		2003		2004		2005		2006	
	N	% of total	N	% of total	N	% of total	N	% of total	N	% of total
New York State	315	97%	410	96%	372	96%	369	98%	381	98%
New York City	268	82%	337	79%	308	80%	317	85%	340	87%
Bronx	16	5%	18	4%	10	3%	12	3%	11	3%
Kings (Brooklyn)	176	54%	223	52%	195	51%	206	55%	218	56%
Manhattan	12	4%	18	4%	23	6%	23	6%	19	5%
Queens	59	18%	76	18%	74	19%	70	19%	89	23%
Richmond (Staten I.)	5	2%	2	0%	6	2%	6	2%	3	1%
Other U.S.	10	3%	14	3%	10	3%	6	2%	8	2%
International			1	<1%	3	1%	0	0%	1	<1%
Total	325		425		385		375		390	

College of Nursing
Enrollment by Student Level
Fall 2002 to Fall 2006



Note: Beginning graduates include MS degree students and CAS students with few than 24 credits; advanced graduate students include only CAS students with more than 23 credits.

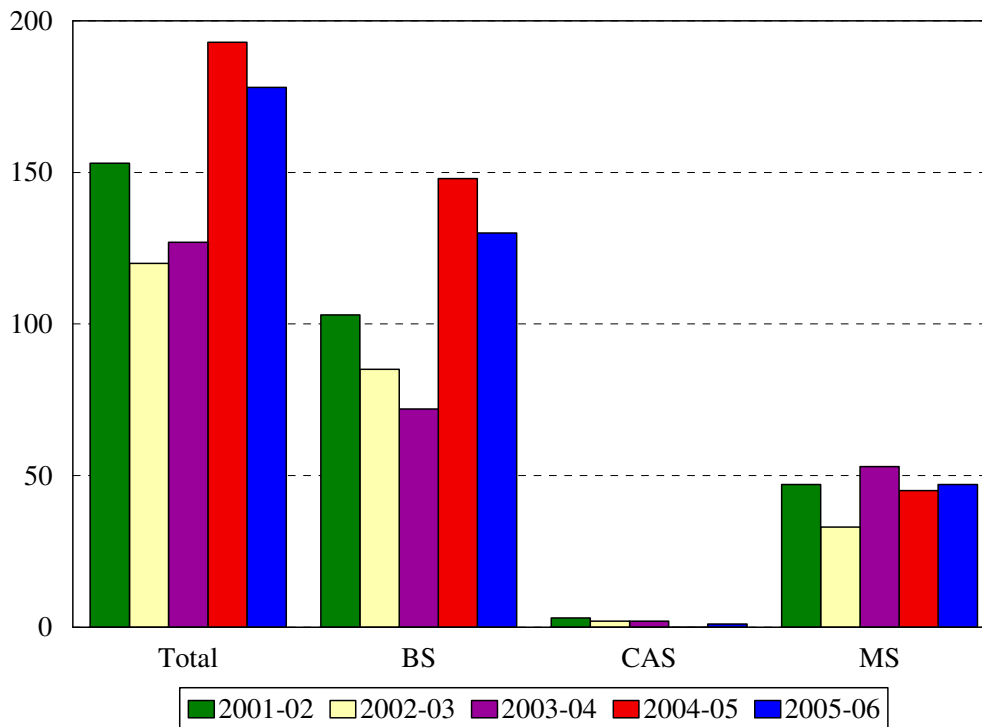
Student Level	Year									
	2002		2003		2004		2005		2006	
	N	%	N	%	N	%	N	%	N	%
Undergraduate	133	47%	219	51%	204	53%	196	52%	188	48%
Beginning Graduate	192	52%	204	48%	181	47%	179	48%	202	52%
Advanced Graduate	0	0%	2	<1%	0	0%	0	0%	0	0%
Total	325		425		385		375		390	

ENROLLMENT BY STUDENT LEVEL
COLLEGE OF NURSING

Program	Code	2002			2003		
		Undergraduates	Beginning Graduates	Advanced Graduates	Undergraduates	Beginning Graduates	Advanced Graduates
Accelerated Nursing BS	1143				29		
RN Completion BS	192	133			187		
Non-matriculated undergrad	000				3		
Family Nurse Practitioner CAS	920		4				2
Women's Nurse Practitioner CAS	930		1				
Clinical Nurse Specialist MS	900						
Clinical Nurse Spec. Adult MS	901		11			7	
Clinical Nurse Spec. HRMI MS	902		2			6	
Family Nurse Practitioner MS	921		60			70	
Nurse Anesthesia MS: Kings	940		35			44	
Nurse Anesthesia MS: Harlem	941		30			37	
Nurse Midwifery Completion MS	950		1			1	
Nurse Midwifery: RN MS	966		10			8	
Women's Nurse Practitioner MS	931		5			8	
Non-matriculated	999		33			23	
Total		133	192	0	219	204	2
Change from previous year		-18%	7%	-100%	65%	6%	

Program	Code	2004			2005			2006		
		Undergraduates	Beginning Graduates	Advanced Graduates	Undergraduates	Beginning Graduates	Advanced Graduates	Undergraduates	Beginning Graduates	Advanced Graduates
Accelerated Nursing BS	1143	38			47			50		
RN Completion BS	192	166			147			132		
Non-matriculated undergrad	999				2			6		
Family Nurse Practitioner CAS	920		1			2			3	
Women's Nurse Practitioner CAS	930		1							
Clinical Nurse Specialist MS	900									
Clinical Nurse Spec. Adult MS	901		14			23			30	
Clinical Nurse Spec. HRMI MS	902		5			2			6	
Family Nurse Practitioner MS	921		61			77			89	
Nurse Anesthesia MS: Kings	940		40			36			37	
Nurse Anesthesia MS: Harlem	941		36			25			14	
Nurse Midwifery Completion MS	950									
Nurse Midwifery: RN MS	966		5			9			11	
Women's Nurse Practitioner MS	931		5						12	
Non-matriculated grad	999		13							
Total		204	181		196	179		188	202	
Change from previous year		-7%	-13%	-200%	-4%	-1%		-4%	13%	

Degrees Granted by Level
College of Nursing
2001-2002 to 2005-2006



Degrees	Code	Year				
		2001-02	2002-03	2003-04	2004-05	2005-06
Generic-Nursing BS	291					
RN Completion BS	192	103	85	72	121	
Accelerated Nursing	1143				27	130
Family Nurse Practitioner CAS	920	2	1	2	0	1
Women's Nurse Practitioner CAS	930	0	1	0	0	
Clinical Nurse Specialist MS	900	1				1
Clinical Nurse Spec. Adult MS	901	5	5	5	2	
Clinical Nurse Spec. HRMI MS	902				2	
Family Nurse Practitioner MS	921	16	13	22	18	18
Nurse Anesthesia MS: Kings	940	8	10	9	12	26
Nurse Anesthesia MS: Harlem	941			12	10	
Nurse Midwifery Completion MS	950	8	0	0	0	1
Nurse Midwifery: RN MS	966	8	3	4	1	
Women's Nurse Practitioner MS	931	2	0	1	0	1
Total		153	120	127	193	178
Change from previous year		3%	-28%	6%	52%	-8%

COLLEGE OF NURSING
DEGREES EARNED BY ETHNIC GROUP

Ethnic Group	Year				
	2001-02	2002-03	2003-04	2004-05	2005-06
White	26	18	17	36	39
% change	-7%	-44%	-6%	112%	8%
Black	115	85	92	139	103
% change	6%	-35%	8%	51%	-26%
Hispanic	5	5	9	4	7
% change	0%	0%	44%	-56%	75%
Asian	4	4	7	13	21
% change	0%	0%	43%	86%	62%
Native American	0	0	0	0	0
% change					
International	0	5	1	0	3
% change			-400%	-100%	
Unknown	3	3	1	1	5
% change	-33%	0%	-200%	0%	400%
Total	153	120	127	193	178
Change from previous year	3%	-28%	6%	52%	-8%