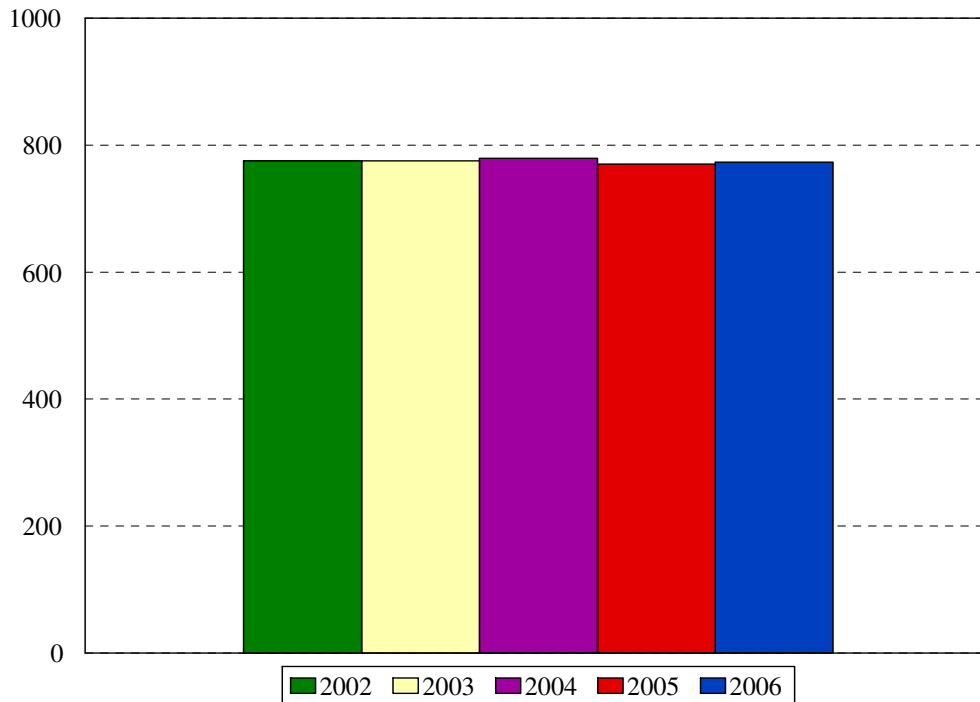


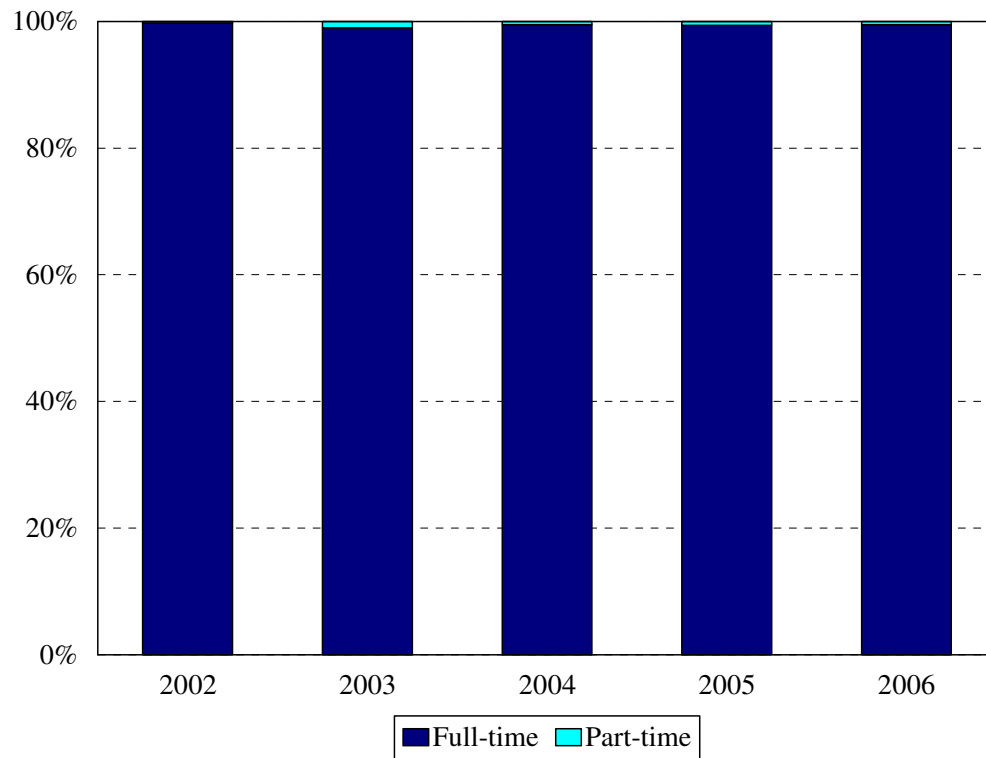
College of Medicine Enrollment
MD and MD/MPH
 Fall 2002 to Fall 2006



College of Medicine MD and MD/MPH	Year				
	2002	2003	2004	2005	2006
New students	184	180	172	185	184
Continuing students	592	595	607	585	589
Total	775	775	779	770	773
Change from previous year	0%	0%	1%	-1%	

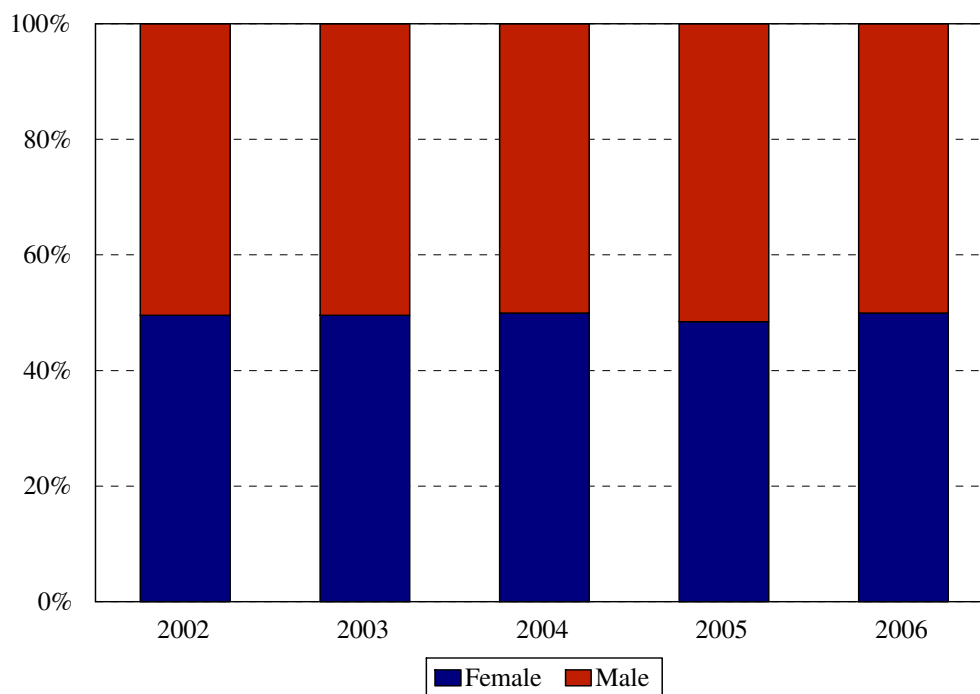
- College of Medicine MD Program totals reflect a planned reduction in entering class size to 180 beginning in 1997 and a planned increase beginning in 2000.
- The total in 2002 includes 6 students concurrently enrolled in the MPH Program, and the total in 2003, 10 students.
- The total in 2005 does not include 2 oral surgeons attending required college of medicine courses.

**College of Medicine: MD and MD/MPH
Enrollment by Full- and Part-time Status
Fall 2002 to Fall 2006**



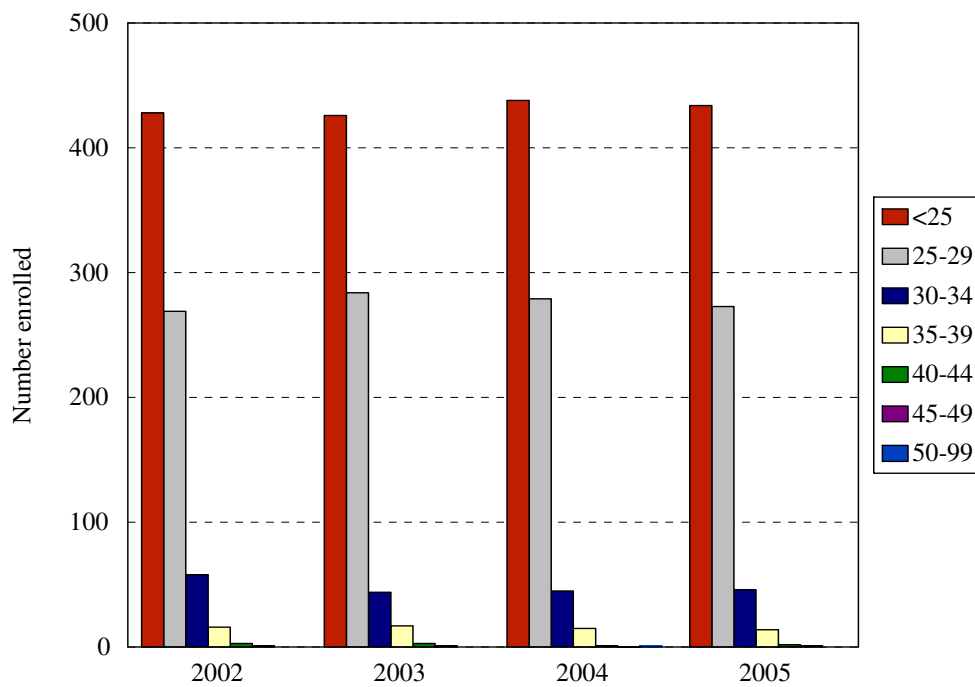
Enrollment Levels	Year				
	2002	2003	2004	2005	2006
Full-time	773	767	775	767	769
Part-time	2	8	4	3	4
% Full-time	99+%	99%	99%	99%	99%
Total	775	775	779	770	773

College of Medicine: MD and MD/MPH
Enrollment by Gender
Fall 2002 to Fall 2006



Gender	Year			Year			Year			Year			Year		
	2002			2003			2004			2005			2006		
	F	M	%F	F	M	%F	F	M	%F	F	M	%F	F	M	%F
New 1 st year	80	104	44%	88	92	49%	88	84	51%	92	93	50%	91	93	49%
Continuing	304	287	51%	296	299	50%	301	306	50%	281	304	48%	295	294	50%
Total	384	391	50%	384	391	50%	389	390	50%	373	397	48%	386	387	50%
Change from previous year			0%			0%			0%			-2%			

**College of Medicine: MD and MD/MPH
Enrollment by Age Level
Fall 2002 to Fall 2006**



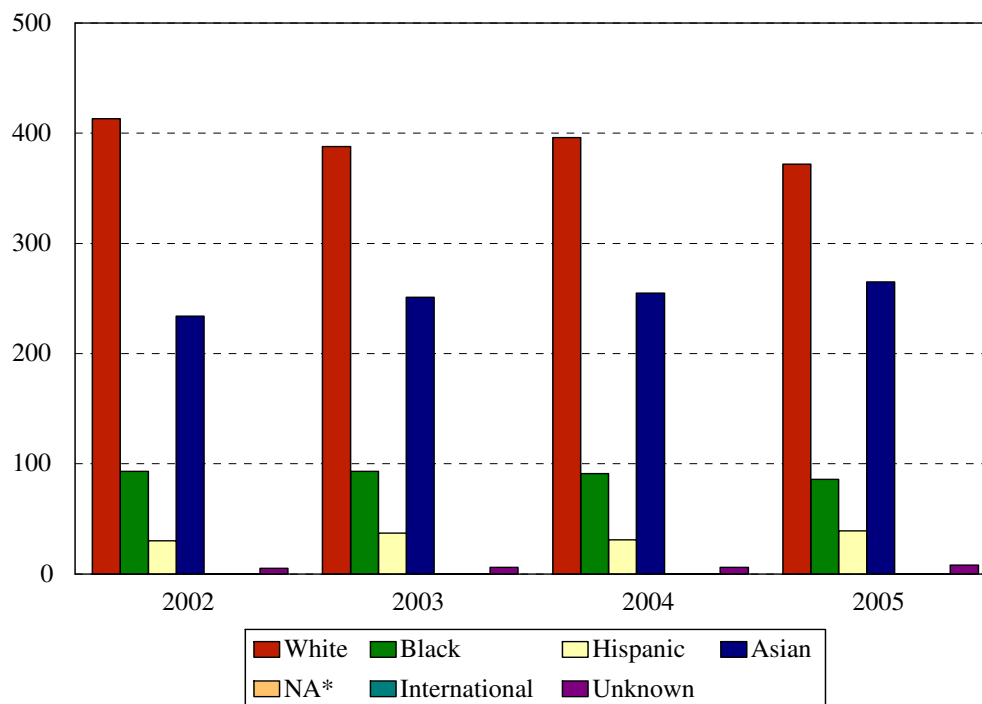
All Medical Students

Age	Year									
	2002		2003		2004		2005		2006	
	N	%	N	%	N	%	N	%	N	%
Under 25	428	55%	426	55%	438	56%	434	56%	450	58%
25-29	269	35%	284	37%	279	36%	273	35%	275	36%
30-34	58	7%	44	6%	45	6%	46	6%	38	5%
35-39	16	2%	17	2%	15	2%	14	2%	9	1%
40-44	3	<1%	3	<1%	1	<1%	2	<1%	1	<1%
45-49	1	<1%	1	<1%	0	0%	1	<1%		
50 and over					1	<1%				
Median age	24		24		24		25		24	
Age range	20-45		20-46		20-55		20-46		20-40	
Total	775		775		779		770		773	

New First Year Medical Students

Age	Year									
	2002		2003		2004		2005		2006	
	N	%	N	%	N	%	N	%	N	%
Under 25	125	68%	148	82%	144	84%	144	78%	139	76%
25-29	47	26%	28	16%	20	12%	36	19%	38	21%
30-34	6	3%	2	1%	6	3%	5	3%	5	3%
35-39	5	3%	2	1%	2	1%	0	0%	2	1%
40-44	1	1%					0	0%	0	0%
45-49							0	0%		
50 and over										
Median age	23		22		22		23		23	
Age range	20-40		20-36		20-38		20-34		20-36	
Total	184		180		172		185		184	

**College of Medicine: MD and MD/MPH
Enrollment by Ethnic Group
Fall 2002 to Fall 2006**



*Native American students numbered 3 in 2000, 2 in 2001, 0 in 2002, 0 in 2003 and 0 in 2004.

All Medical Students

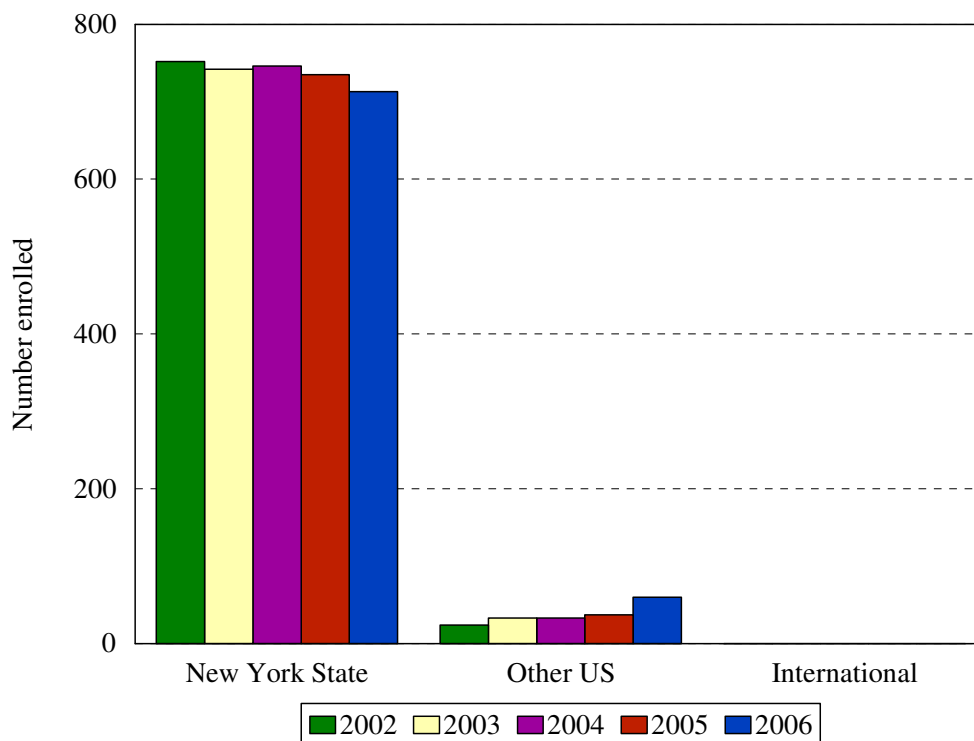
Ethnic Group (IPEDS Categories)	Year									
	2002		2003		2004		2005		2006	
	N	%	N	%	N	%	N	%	N	%
White	423	55%	413	53%	396	51%	372	48%	369	48%
Black	93	12%	93	12%	91	12%	86	11%	91	12%
Hispanic	28	4%	30	4%	31	4%	39	5%	41	5%
Asian/Pacific Islander	222	29%	234	30%	255	33%	265	34%	262	34%
Native American	2	0%	0	0%	0	0%	0	0%	0	0%
International	0	0%	0	0%	0	0%	0	0%	0	0%
Unknown	7	1%	5	1%	6	1%	8	1%	10	1%
<i>Black and Hispanic</i>	<i>121</i>	<i>16%</i>	<i>123</i>	<i>16%</i>	<i>122</i>	<i>16%</i>	<i>125</i>	<i>16%</i>	<i>132</i>	<i>17%</i>
Total	775		775		779		770		773	

- The Integrated Postsecondary Education Data Set (IPEDS) ethnic categories are those used by the U.S. Department of Education.

New First Year Medical Students

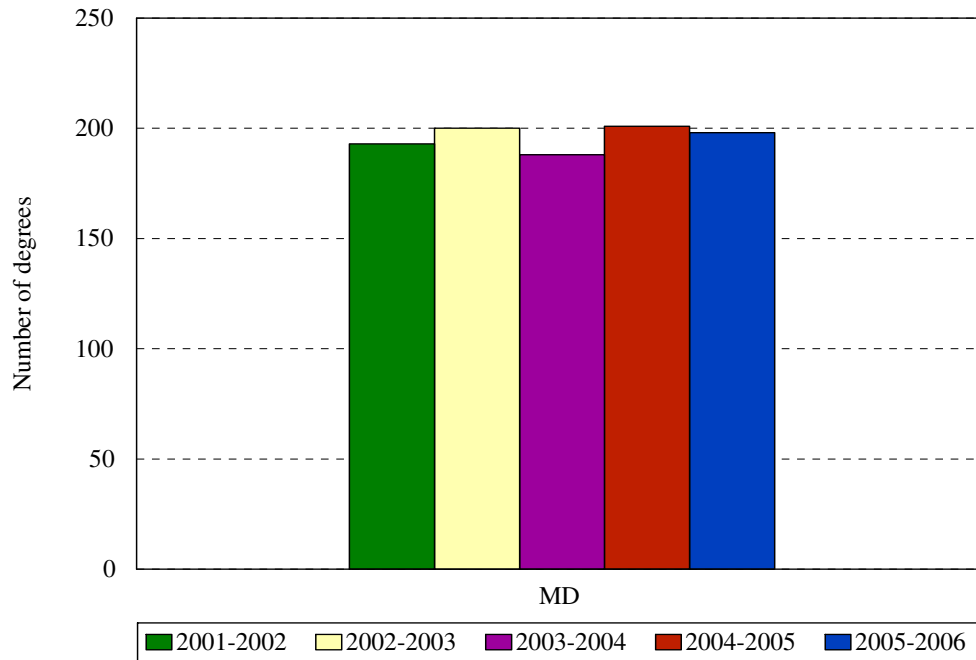
Ethnic Group (IPEDS Categories)	Year									
	2002		2003		2004		2005		2006	
	N	%	N	%	N	%	N	%	N	%
White	96	52%	91	51%	98	57%	88	48%	92	50%
Black	19	10%	24	10%	17	10%	19	10%	17	9%
Hispanic	12	7%	13	7%	3	2%	11	6%	7	4%
Asian/Pacific Islander	56	30%	56	31%	54	31%	65	35%	65	35%
Native American										
International										
Unknown	1	1%	2	1%			2	1%	3	2%
<i>Black and Hispanic</i>	<i>31</i>	<i>17%</i>	<i>37</i>	<i>17%</i>	<i>20</i>	<i>12%</i>	<i>30</i>	<i>16%</i>	<i>24</i>	<i>13%</i>
Total	184		180		172		185		184	

**College of Medicine: MD and MD/MPH
Enrollment by Permanent Residence
Fall 2002 to Fall 2006**



Residency	Year									
	2002		2003		2004		2005		2006	
	N	% of total	N	% of total	N	% of total	N	% of total	N	% of total
New York State	751	97%	742	96%	746	96%	734	95%	713	92%
New York City	527	68%	512	66%	490	63%	468	61%	459	59%
Bronx	18	2%	17	2%	10	1%	12	2%	12	2%
Kings (Brooklyn)	249	32%	243	31%	229	29%	217	28%	227	29%
Manhattan	83	11%	81	10%	74	10%	74	10%	68	9%
Queens	142	18%	134	17%	140	18%	133	17%	125	16%
Richmond (Staten I.)	35	5%	37	5%	37	5%	32	4%	27	3%
Other U.S.	24	3%	33	4%	33	4%	37	5%	60	8%
International	0	0%	0	0%	0	0%	0	0%	0	0%
Total	775		775		779		770		773	

**College of Medicine: MD and MD/MPH
Degrees Granted by Level
Fiscal Years 2001-2002 to 2005-2006**



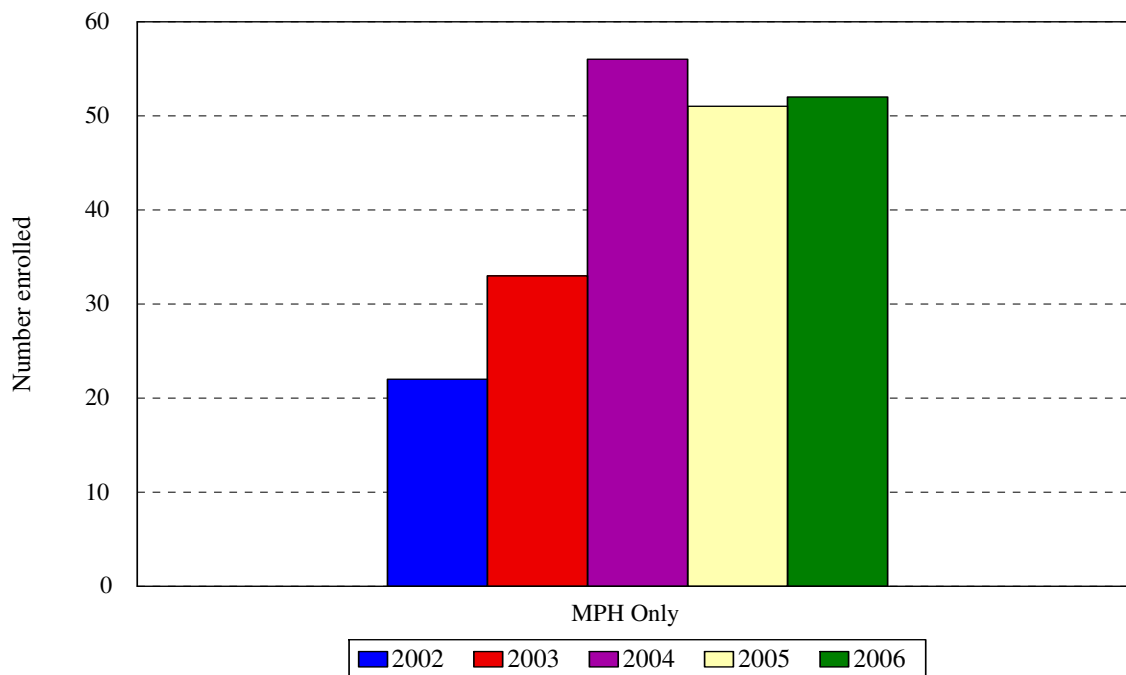
Degrees granted during July 1 (year 1) to June 30 (year 2) periods.

Degree Level	Year				
	2001-2002	2002-2003	2003-2004	2004-2005	2005-2006
Doctor of Medicine	193	200	188	201	198
Change from previous year	0%	4%	-6%	7%	-1%

**DEGREES EARNED BY ETHNIC GROUP
COLLEGE OF MEDICINE**

Ethnic Group	Year				
	2001-2002	2002-2003	2003-2004	2004-2005	2005-2006
White	106	117	91	104	93
% change	1%	10%	-29%	14%	-11%
Black	18	21	23	25	22
% change	3%	17%	9%	9%	-12%
Hispanic	10	9	7	4	10
% change	12%	-10%	-29%	-43%	150%
Asian	59	52	65	67	70
% change	2%	-12%	20%	3%	4%
Native American	0	0	0	0	0
International	0	0	0	0	0
% change					
Unknown	0	0	2	1	3
% change				-50%	200%
Total	193	200	188	201	198
Change from previous year	0%	4%	-6%	7%	-1%

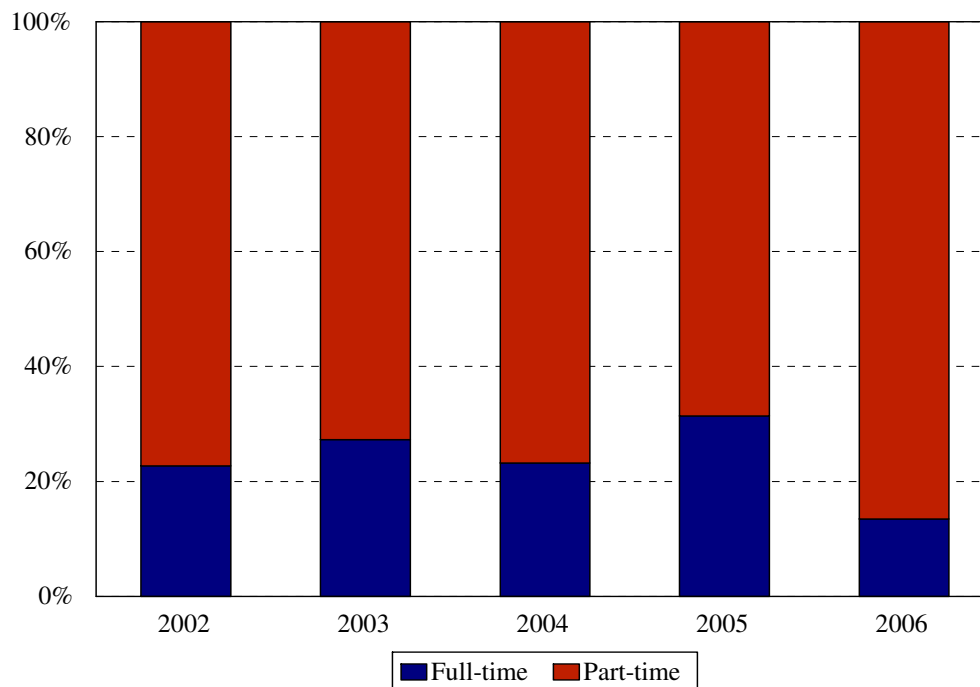
Masters of Public Health Fall 2002 to Fall 2006



College of Medicine MD and MD/MPH	Year				
	2002	2003	2004	2005	2006
New students	22	11	20	38	31
Continuing students	0	22	36	13	21
Total	22	33	56	51	52
Change from previous year		50%	41%	-9%	2%

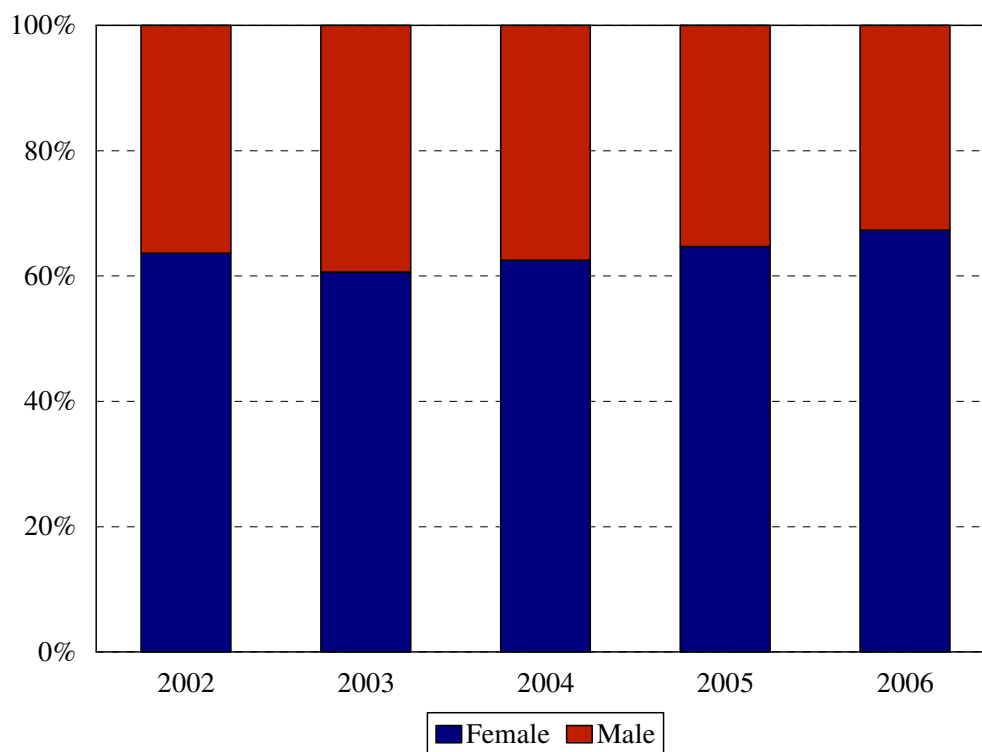
The totals do **not** include students concurrently enrolled in the MD/MPH Programs: 6 in 2002, 10 in 2003, 16 in 2004, 17 in 2005, and 17 in 2006.

**Masters of Public Health
Enrollment by Full- and Part-time Status
Fall 2002 to Fall 2006**



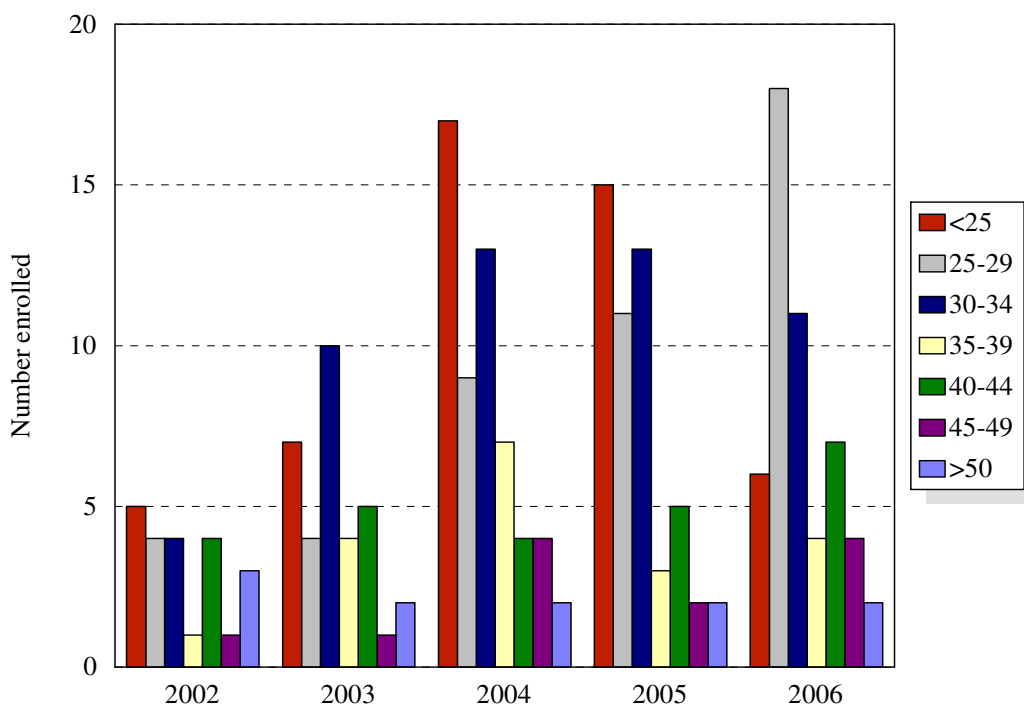
Enrollment Levels	Year				
	2002	2003	2004	2005	2006
Full-time	5	9	13	16	7
Part-time	17	24	43	35	45
% Full-time	23%	27%	23%	31%	13%
Total	22	33	56	51	52

**Masters of Public Health
Enrollment by Gender
Fall 2002 to Fall 2006**



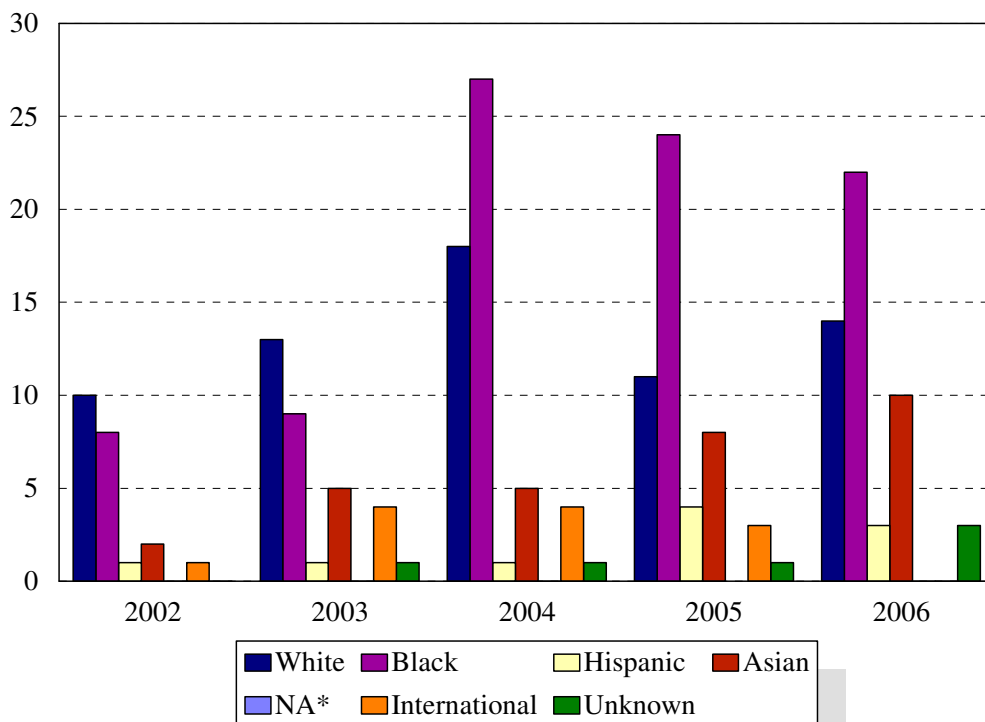
Gender	Year			Year			Year			Year			Year		
	2002			2003			2004			2005			2006		
	F	M	%F	F	M	%F	F	M	%F	F	M	%F	F	M	%F
Total	14	8	64%	20	13	61%	35	21	63%	33	18	65%	35	17	67%
Change from previous year						-3%			2%			2%			3%

Masters of Public Health Enrollment by Age Level Fall 2002 to Fall 2006



Age	Year									
	2002		2003		2004		2005		2006	
	N	%	N	%	N	%	N	%	N	%
Under 25	5	23%	7	21%	17	30%	15	29%	6	12%
25-29	4	18%	4	12%	9	16%	11	22%	18	35%
30-34	4	18%	10	30%	13	23%	13	25%	11	21%
35-39	1	5%	4	12%	7	13%	3	6%	4	8%
40-44	4	18%	5	15%	4	7%	5	10%	7	13%
45-49	1	5%	1	3%	4	7%	2	4%	4	8%
50 and over	3	14%	2	6%	2	4%	2	4%	2	4%
Median age	31		31		31		31		30	
Age range	21-51		21-53		21-53		21-54		21-55	
Total	22		33		56		51		52	

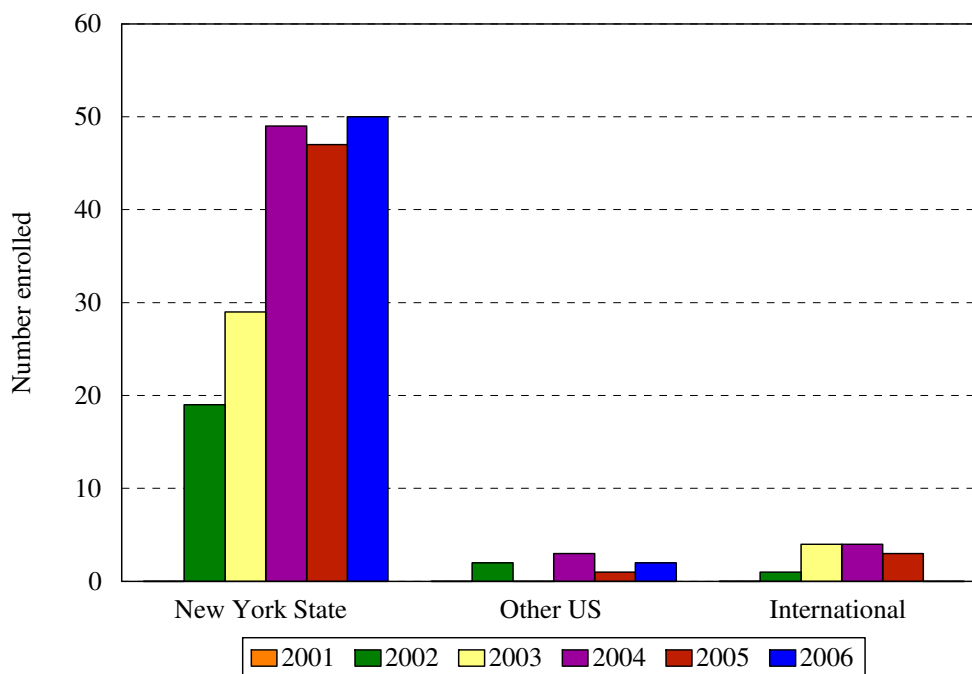
Masters of Public Health Enrollment by Ethnic Group Fall 2002 to Fall 2006



Ethnic Group (IPEDS Categories)	Year									
	2002		2003		2004		2005		2006	
	N	%	N	%	N	%	N	%	N	%
White	10	45%	13	39%	18	32%	11	22%	14	27%
Black	8	36%	9	27%	27	48%	24	47%	22	42%
Hispanic	1	5%	1	3%	1	2%	4	8%	3	6%
Asian/Pacific Islander	2	9%	5	15%	5	9%	8	16%	10	19%
Native American	0	0%	0	0%	0	0%	0	0%	0	0%
International	1	5%	4	12%	4	7%	3	6%	0	0%
Unknown		0%	1	3%	1	2%	1	2%	3	6%
<i>Black and Hispanic</i>	9	41%	10	30%	28	50%	28	55%	25	48%
Total	22		33		56		51		52	

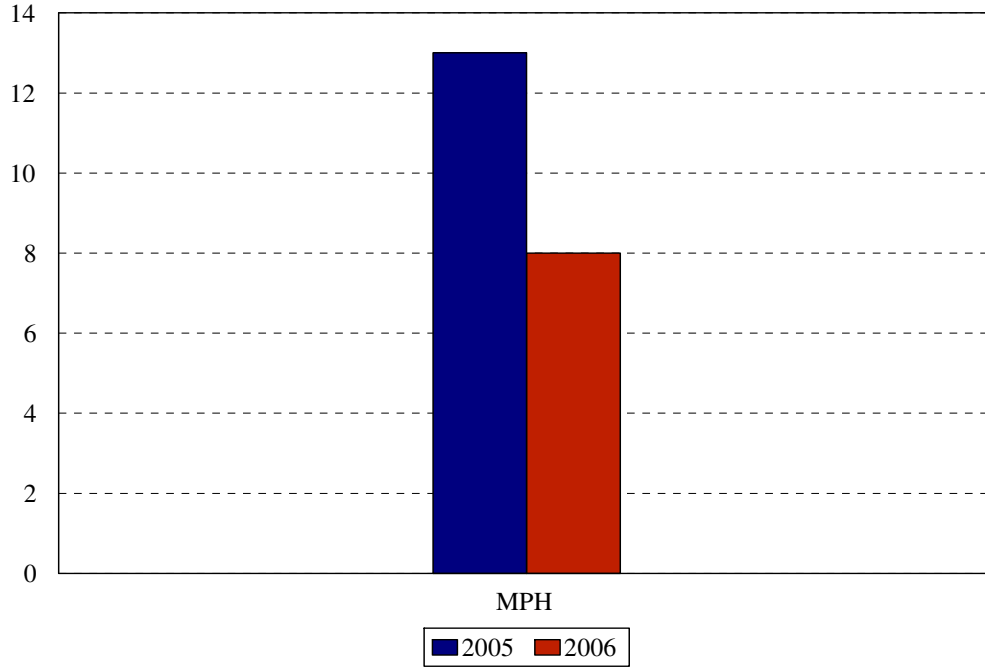
- The Integrated Postsecondary Education Data Set (IPEDS) ethnic categories are those used by the U.S. Department of Education.

College of Medicine: MPH Only
Enrollment by Permanent Residence
 Fall 2002 to Fall 2006



Residency	Year									
	2002		2003		2004		2005		2006	
	N	% of total	N	% of total	N	% of total	N	% of total	N	% of total
New York State	13	59%	29	88%	49	88%	47	92%	50	96%
New York City	13	59%	23	70%	40	71%	40	78%	39	75%
Bronx	0	0%	1	3%	2	4%	1	2%	1	2%
Kings (Brooklyn)	10	45%	17	52%	26	46%	28	55%	28	54%
Manhattan	3	14%	3	9%	4	7%	5	10%	3	6%
Queens	0	0%	2	6%	6	11%	5	10%	5	10%
Richmond (Staten I.)	0	0%	0	0%	2	4%	1	2%	2	4%
Other U.S.	2	9%	0	0%	3	5%	1	2%	2	4%
International	1	5%	4	12%	4	7%	3	6%		
Total	22		33		56		51		52	

**College of Medicine: MPH
Degrees Granted by Level
Fiscal Years 2001-2002 to 2005-2006**



Degree Level	Year				
	2001-2002	2002-2003	2003-2004	2004-2005	2005-2006
MPH				13	10
Change from previous year					-23%

DEGREES EARNED BY ETHNIC GROUP
MASTERS IN PUBLIC HEALTH

Ethnic Group	Year				
	2001- 2002	2002- 2003	2003- 2004	2004- 2005	2005- 2006
White				5	2
% change					-80%
Black				4	4
% change					0%
Hispanic				0	2
% change					
Asian				2	2
% change					0%
Native American				0	0
					0%
International				2	0
% change					-100%
Unknown				0	0
% change					0%
Total				13	10
Change from previous year					-23%