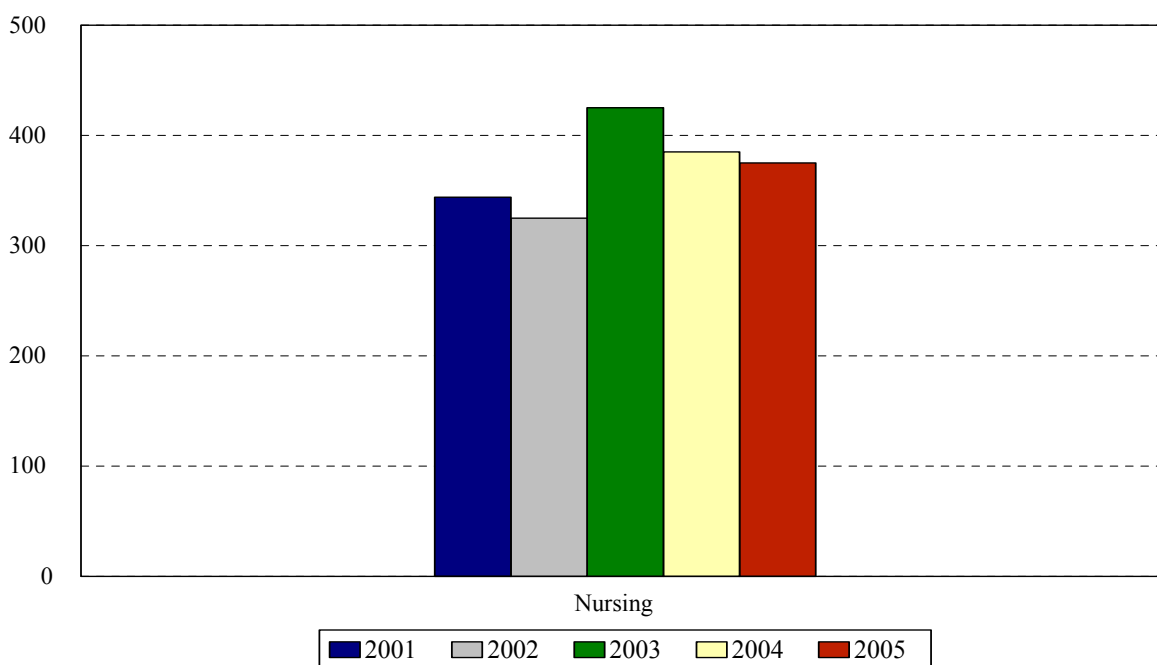


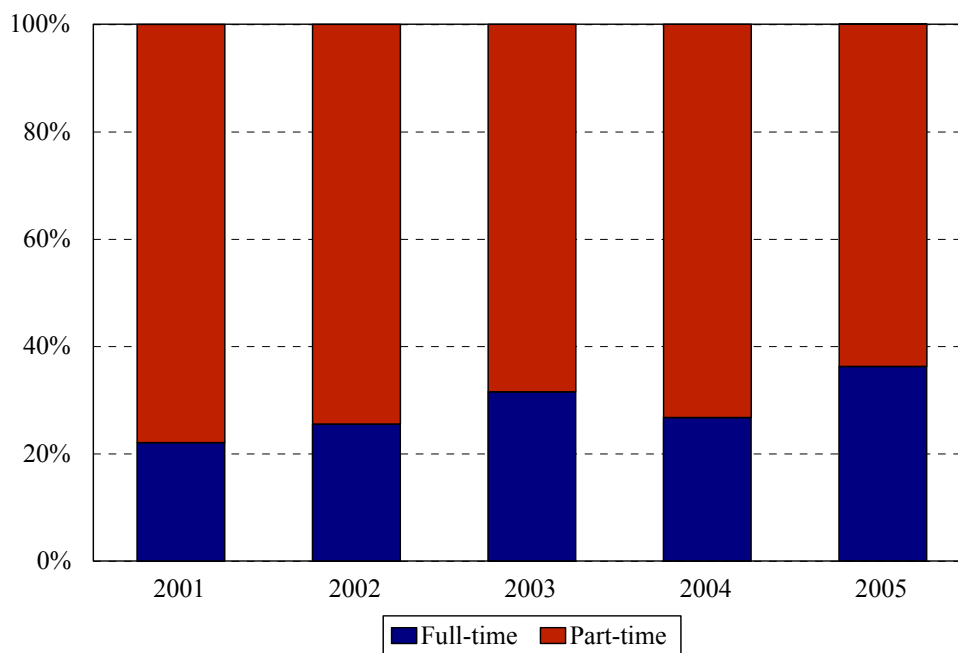
College of Nursing Enrollment Fall 2001 to Fall 2005



Award	Program	Code	Year				
			2001	2002	2003	2004	2005
BS	Accelerated Nursing	1143			29	38	47
BS	RN Completion	192	159	133	187	166	147
	Non-matriculated undergraduate	000	4	0	3	0	2
	Total Undergraduates		163	133	219	204	196
CAS	Family Nurse Practitioner	920	5	4	2	1	2
CAS	Women's Nurse Practitioner	930	1	1		1	
MS	Clinical Nurse Specialist	900					
MS	Clinical Nurse Spec. Adult	901	16	11	7	14	23
MS	Clinical Nurse Spec. HRMI	902	2	2	6	5	2
MS	Family Nurse Practitioner	921	63	60	70	61	77
MS	Nurse Anesthesia: KCH	940	34	35	44	40	36
MS	Nurse Anesthesia: Harlem	941	24	30	37	36	25
MS	Nurse Midwifery Completion	950		1	1		
MS	Nurse Midwifery	966	13	10	8	5	9
MS	Women's Nurse Practitioner	931	7	5	8	5	5
	Non-matriculated	999	16	33	23	13	0
	Total Graduate		181	192	206	181	179
	Total		344	325	425	385	375
	Change from previous year		-6%	-6%	24%	-10%	-3%

College of Nursing totals reflect the deactivation of the Generic Nursing program, beginning in 1997.

College of Nursing
Enrollment by Full- and Part-time Status
Fall 2001 to Fall 2005

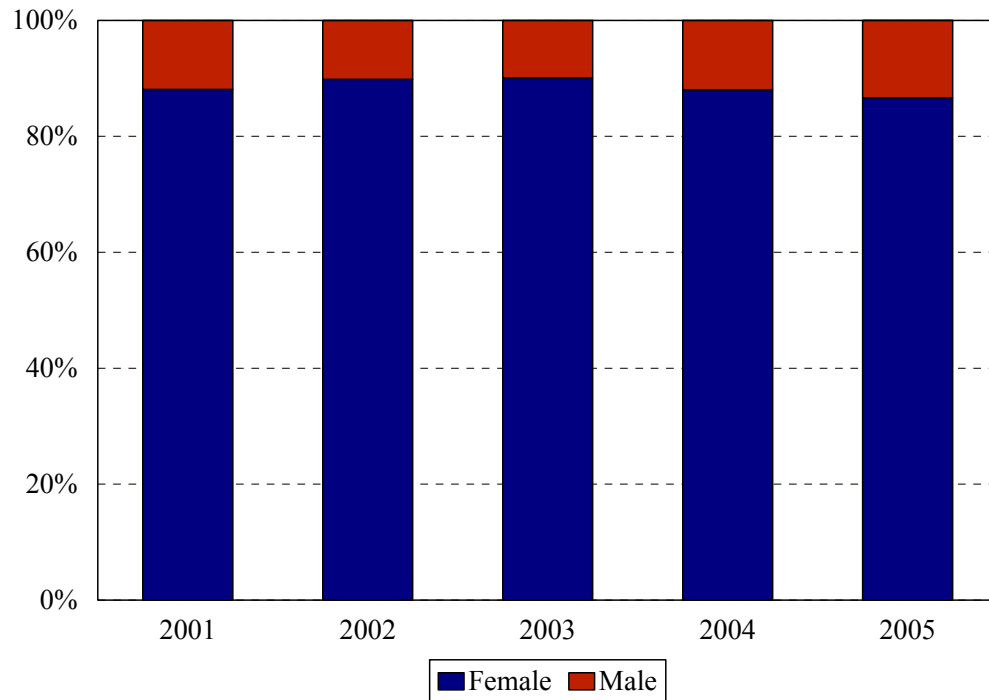


Program	Code	Year								
		2001			2002			2003		
		FT	PT	%FT	FT	PT	%FT	FT	PT	%FT
Accelerated Nursing	1143							29	0	100%
RN Completion BS	192	20	139	13%	31	102	23%	45	142	24%
Non-matriculated	000	0	4	0%				0	3	0%
Total Undergraduates		20	143	12%	31	102	23%	74	145	34%
Family Nurse Practitioner CAS	920	0	5	0%	0	4	0%	0	2	0%
Women's Nurse Practitioner CAS	930	0	1	0%	0	1	0%			
Clinical Nurse Specialist MS	900									
Clinical Nurse Spec. Adult MS	901	0	16	0%	3	8	27%	1	6	14%
Clinical Nurse Spec. HRMI MS	902	1	1	50%	0	2	0%	1	5	17%
Family Nurse Practitioner MS	921	10	53	16%	6	54	10%	11	59	16%
Nurse Anesthesia MS: Kings	940	20	14	59%	18	17	51%	20	24	45%
Nurse Anesthesia MS: Harlem	941	16	8	67%	16	14	53%	22	15	59%
Nurse Midwifery Completion MS	950				0	1	0%	0	1	0%
Nurse Midwifery: RN MS	966	9	4	69%	7	3	70%	5	3	63%
Women's Nurse Practitioner MS	931	0	7	0%	1	4	20%	0	8	0%
Non-matriculated graduate	999	0	16	0%	1	32	3%	0	23	0%
Total Graduate		56	125	31%	52	140	27%	60	146	29%
Total		76	268	22%	83	242	26%	134	290	32%
Change from previous year				0%			4%			6%

Program	Code	Year					
		2004			2005		
		FT	PT	%FT	FT	PT	%FT
Accelerated Nursing	1143	33	5	87%	46	1	98%
RN Completion BS	192	19	147	11%	30	117	20%
Non-matriculated	000				0	2	0%
Total Undergraduates		52	152	25%	76	120	39%
Family Nurse Practitioner CAS	920	0	1	0%	0	2	
Women's Nurse Practitioner CAS	930	0	1	0%			
Clinical Nurse Specialist MS	900						
Clinical Nurse Spec. Adult MS	901	0	14	0%	4	19	17%
Clinical Nurse Spec. HRMI MS	902	0	5	0%	0	2	0%
Family Nurse Practitioner MS	921	10	51	16%	16	61	21%
Nurse Anesthesia MS: Kings	940	20	20	50%	20	16	56%
Nurse Anesthesia MS: Harlem	941	19	17	53%	14	11	56%
Nurse Midwifery Completion MS	950						
Nurse Midwifery: RN MS	966	2	3	40%	5	4	56%
Women's Nurse Practitioner MS	931	0	5	0%	1	4	20%
Non-matriculated	999	0	13	0%			
Total Graduate		51	130	28%	60	119	34%
Total		103	282	27%	136	239	36%
Change from previous year				-5%			9%

College of Nursing Enrollment by Gender

Fall 2001 to Fall 2005

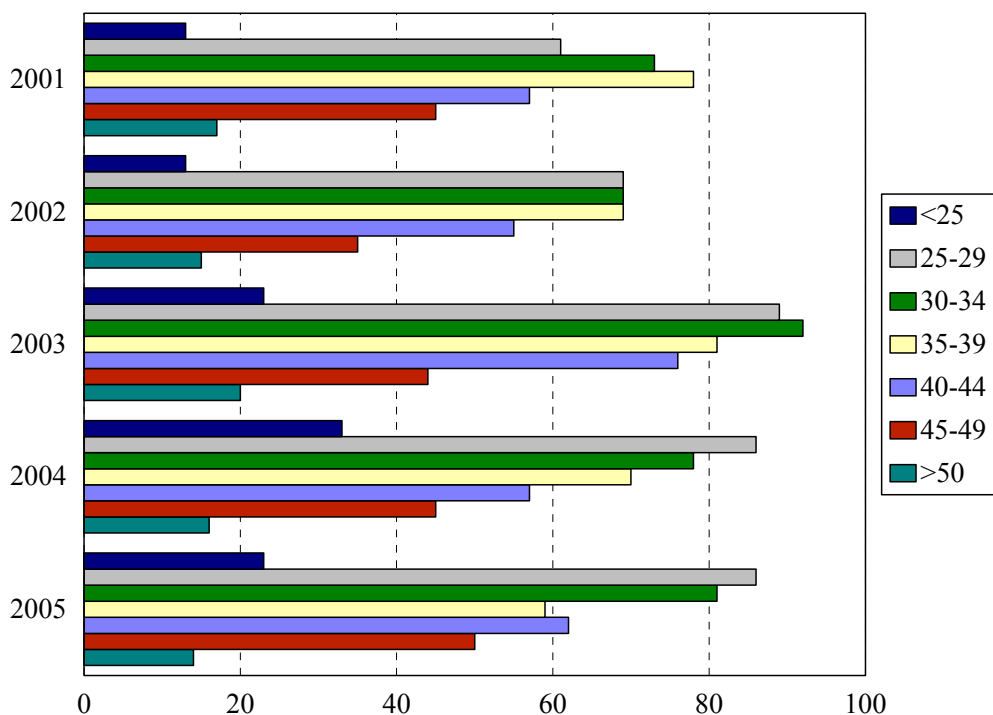


Gender	Year				
	2001	2002	2003	2004	2005
Female	303	292	383	339	325
Male	41	33	42	46	50
% Female	88%	90%	90%	88%	87%
Total	344	325	425	385	375

COLLEGE OF NURSING
ENROLLMENT BY GENDER

Program	Code	2001		2002		2003		2004		2005	
		F	M	F	M	F	M	F	M	F	M
Accelerated Nursing BS	1143					23	6	34	4	38	9
RN Completion BS	192	149	10	123	10	174	13	155	11	138	9
Non-matriculated	000	3	1			3	0			1	1
Total Undergraduates		152	11	123	10	200	19	189	15	177	19
Family Nurse Practitioner CAS	920	5	0	4	0	2	0	1	0	2	0
Women's Nurse Practitioner CAS	930	1	0	1	0			1	0		
Clinical Nurse Specialist MS	900										
Clinical Nurse Spec. Adult MS	901	15	1	10	1	7	0	12	2	20	3
Clinical Nurse Spec. HRMI MS	902	2	0	2	0	6	0	5	0	2	0
Family Nurse Practitioner MS	921	57	6	56	4	68	2	56	5	71	6
Nurse Anesthesia MS	940	23	11	29	6	37	7	30	10	25	11
	941	12	12	20	10	24	13	25	11	14	11
Nurse Midwifery Completion MS	950			1	0	1	0				
Nurse Midwifery: RN MS	966	13	0	10	0	8	0	5	0	9	0
Women's Nurse Practitioner MS	931	7	0	5	0	8	0	5	0	5	0
Non-matriculated	999	16	0	31	2	22	1	10	3	0	0
Total Graduate		151	30	169	23	183	23	150	31	148	31
Total		303	41	292	33	383	42	339	46	325	50
Change from previous year		-5%	-13%	-4%	-20%	31%	27%	-13%	9%	-4%	9%

College of Nursing Enrollment by Age Level Fall 2001 to Fall 2005

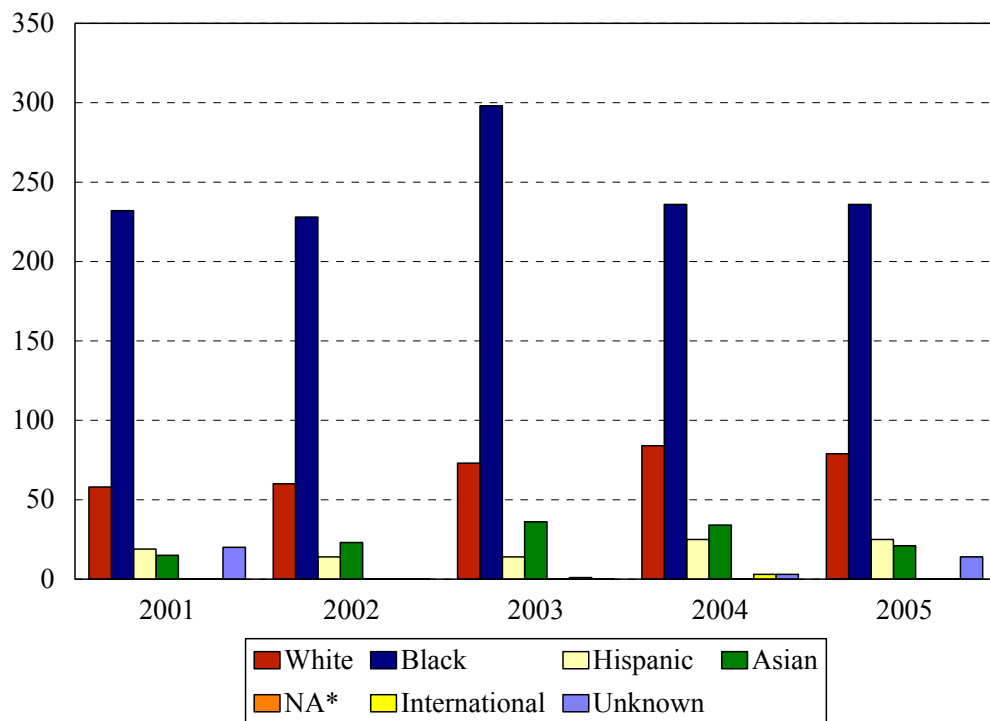


Age	Year									
	2001		2002		2003		2004		2005	
	N	%	N	%	N	%	N	%	N	%
Under 25	13	4%	13	4%	23	5%	33	9%	23	6%
25-29	61	17%	69	17%	89	21%	86	22%	86	23%
30-34	73	20%	69	20%	92	22%	78	20%	81	22%
35-39	78	21%	69	21%	81	19%	70	18%	59	16%
40-44	57	16%	55	16%	76	18%	57	15%	62	17%
45-49	45	12%	35	12%	44	10%	45	12%	50	13%
50 and over	17	5%	15	5%	20	5%	16	4%	14	4%
Age range	21-58		21-59		21-55		18-59		19-55	
Median age	36		36		35		34		34	
Total	344		325		425		385		375	

COLLEGE OF NURSING
MEDIAN AGE BY PROGRAM

Award	Program	Code	Median Age				
			2001	2002	2003	2004	2005
BS	Accelerated Nursing BS	1143			30.0	28.5	30.0
BS	RN Completion BS	192	36.0	35.0	36.0	35.5	35.0
	Non-matriculated	000	29.0		34.0		38.0
	Total Undergraduate		39.0	35.0	35.0	34.5	33.0
CAS	Family Nurse Practitioner	920	48.0		50.0	40.0	46.0
CAS	Women's Nurse Practitioner	930	53.0			47.0	
MS	Clinical Nurse Specialist	900					
MS	Clinical Nurse Spec. Adult	901	37.0	39.0	40.0	37.5	37.0
MS	Clinical Nurse Spec. HRMI	902	32.5	41.0	41.0	44.0	39.0
MS	Family Nurse Practitioner	921	36.0	36.5	38.0	38.0	39.0
MS	Nurse Anesthesia : KCH	940	34.5	33.0	32.0	32.0	34.0
MS	Nurse Anesthesia: Harlem	941	36.5	34.0	34.0	30.5	31.0
MS	Nurse Midwifery Completion	950		44.0	45.0		
MS	Nurse Midwifery: RN	966	32.0	31.0	31.0	30.0	31.0
MS	Women's Nurse Practitioner	931	41.0	43.0	32.0	28.0	32.0
	Non-matriculated	999	39.5	34.0	31.0	37.0	
	Total Graduate		37.0	36.0	35.0	34.0	35.0
	Total		36.0	36.0	35.0	34.0	34.0
	Change from previous year		-1	0	-1	-1	0

College of Nursing
Enrollment by Ethnic Group
Fall 2001 to Fall 2005



*Native American

Ethnic Group (IPEDS Categories)	Year									
	2001		2002		2003		2004		2005	
	N	%	N	%	N	%	N	%	N	%
White	58	17%	60	18%	76	18%	84	22%	79	21%
Black	232	67%	228	70%	298	70%	236	61%	236	63%
Hispanic	19	6%	14	4%	14	3%	25	6%	25	7%
Asian/Pacific Islander	15	4%	23	7%	36	8%	34	9%	21	6%
Native American										
International					1	<1%	3	1%	0	0%
Unknown	20	6%					3	1%	14	4%
<i>% Black and Hispanic</i>		73%		74%		73%		67%		70%
Total	344		325		425		385		375	

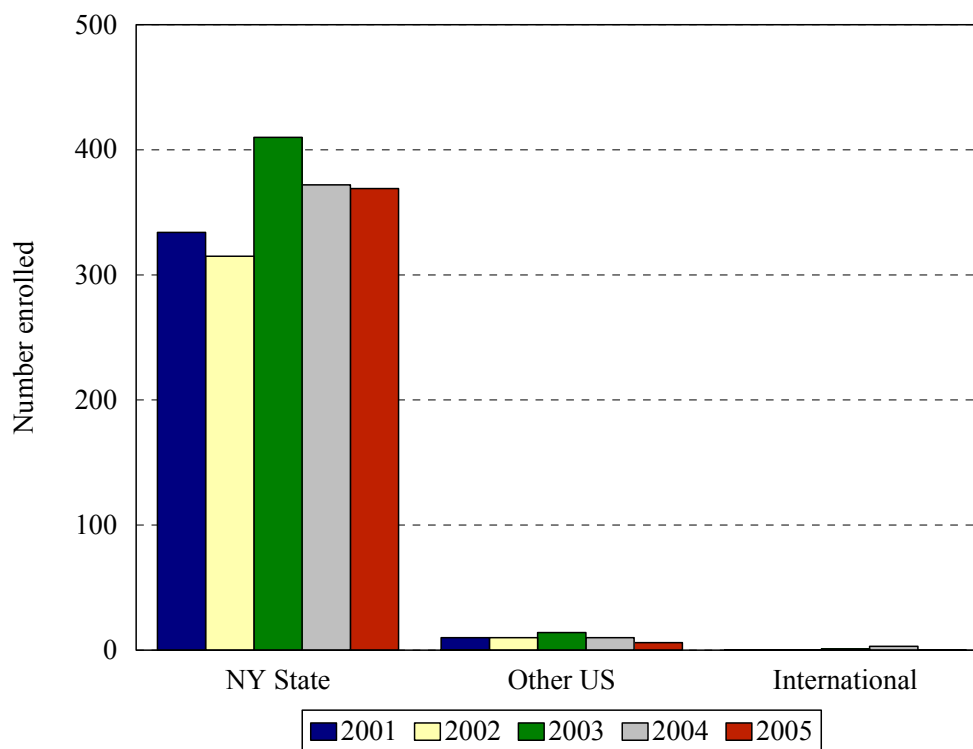
- The Integrated Postsecondary Education Data Set (IPEDS) ethnic categories are those used by the U.S. Department of Education.

ENROLLMENT BY ETHNIC GROUP BY PROGRAM
COLLEGE OF NURSING

Program	White	Black	Hispanic	Asian	International	Unknown	White	Black	Hispanic	Asian	International	Unknown
	2001						2002					
	1143											
192	28	109	8	4	0	10	20	107	5	1	0	0
000	0	3	0	1	0	0						
Total Und.	28	112	8	5	0	10	20	107	5	1	0	0
920	0	3	0	0	0	2	2	2	0	0	0	0
930			1					1				
900												
901	2	12	1	1	0	0	2	8	1	0	0	0
902	0	2	0	0	0	0	0	2	0	0	0	0
921	10	45	5	1	0	2	13	39	5	3	0	0
940	8	21	2	3	0	0	7	21	2	5	0	0
941	1	15	1	5	0	2	4	14	1	11	0	0
950									1			
966	3	8	0	0	0	2	3	7	0	0	0	0
931	1	6	0	0	0	0	1	4	0	0	0	0
999	5	8	1	0	0	2	8	23	0	2	0	0
Total Grad.	30	120	11	10	0	10	40	121	9	22	0	0
Total	58	232	19	15	0	20	60	228	14	23	0	0

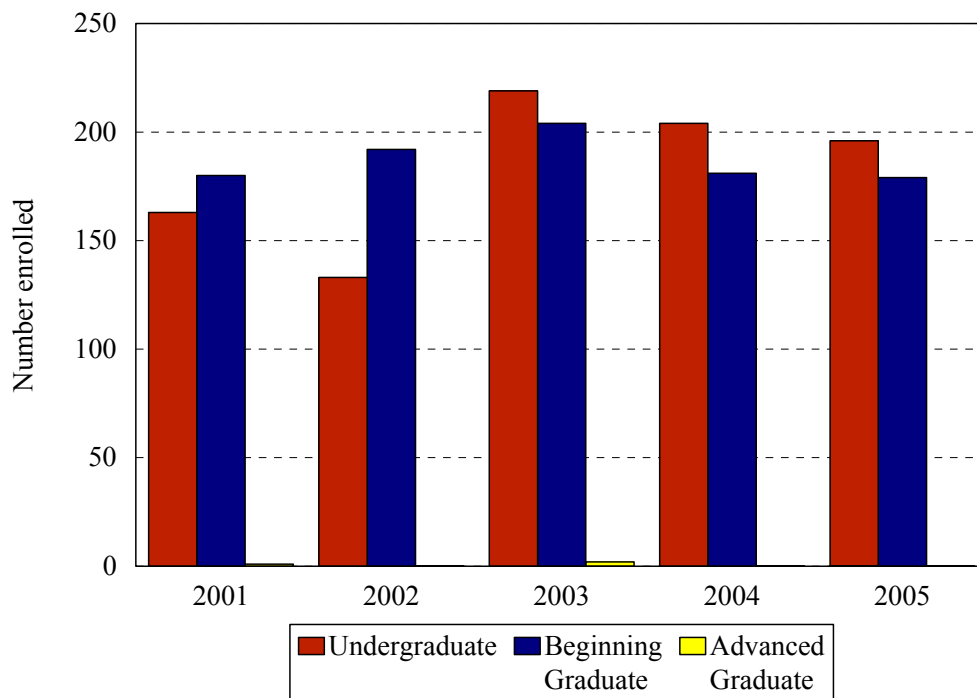
Program	White	Black	Hispanic	Asian	International	Unknown	White	Black	Hispanic	Asian	International	Unknown	White	Black	Hispanic	Asian	International	Unknown
	2003						2004						2005					
	1143	6	22	0	1	0	0	22	7	2	5	2	0	19	20	5	3	0
192	25	149	5	7	1	0	14	132	9	7	1	3	11	113	7	6	0	10
000	1	2	0	0	0	0							1	1	0	0	0	0
Total Und.	32	173	5	8	1	0	36	139	11	12	3	3	31	134	12	9	0	10
920	1	1	0	0	0	0	0	1	0	0	0	0	0	2	0	0	0	0
930							0	1	0	0	0	0						
900																		
901		6	1				0	14	0	0	0	0	2	20	0	1	0	0
902	0	5	0	1	0	0	0	4	1	0	0	0	0	2	0	0	0	0
921	13	49	6	2	0	0	12	42	4	3	0	0	15	51	5	2	0	4
940	16	20	2	6	0	0	20	12	4	4	0	0	19	11	4	2	0	0
941	7	14	0	16	0	0	12	8	4	12	0	0	8	6	4	7	0	0
950				1														
966	3	5	0	0	0	0	0	5	0	0	0	0	3	6	0	0	0	0
931	1	6	0	1	0	0	1	2	1	1	0	0	1	4	0	0	0	0
999	3	19	0	1	0	0	3	8	0	2	0	0						
Total Grad.	44	125	9	28	1	0	48	97	14	22	0	0	48	102	13	12	0	4
Total	76	298	14	36	1	0	84	236	25	34	3	3	79	236	25	21	0	14

College of Nursing
Enrollment by Permanent Residence
 Fall 2001 to Fall 2005



Residency	Year									
	2001		2002		2003		2004		2005	
	N	% of total	N	% of total	N	% of total	N	% of total	N	% of total
New York State	334	97%	315	97%	410	96%	372	96%	369	98%
New York City	298	87%	268	82%	337	79%	308	80%	317	85%
Bronx	13	4%	16	5%	18	4%	10	3%	12	3%
Kings (Brooklyn)	198	58%	176	54%	223	52%	195	51%	206	55%
Manhattan	11	3%	12	4%	18	4%	23	6%	23	6%
Queens	71	21%	59	18%	76	18%	74	19%	70	19%
Richmond (Staten I.)	5	1%	5	2%	2	0%	6	2%	6	2%
Other U.S.	10	3%	10	3%	14	3%	10	3%	6	2%
International					1	<1%	3	1%	0	0%
Total	344		325		425		385		375	

College of Nursing
Enrollment by Student Level
Fall 2001 to Fall 2005



Note: Beginning graduates include MS degree students and CAS students with few than 24 credits; advanced graduate students include only CAS students with more than 23 credits.

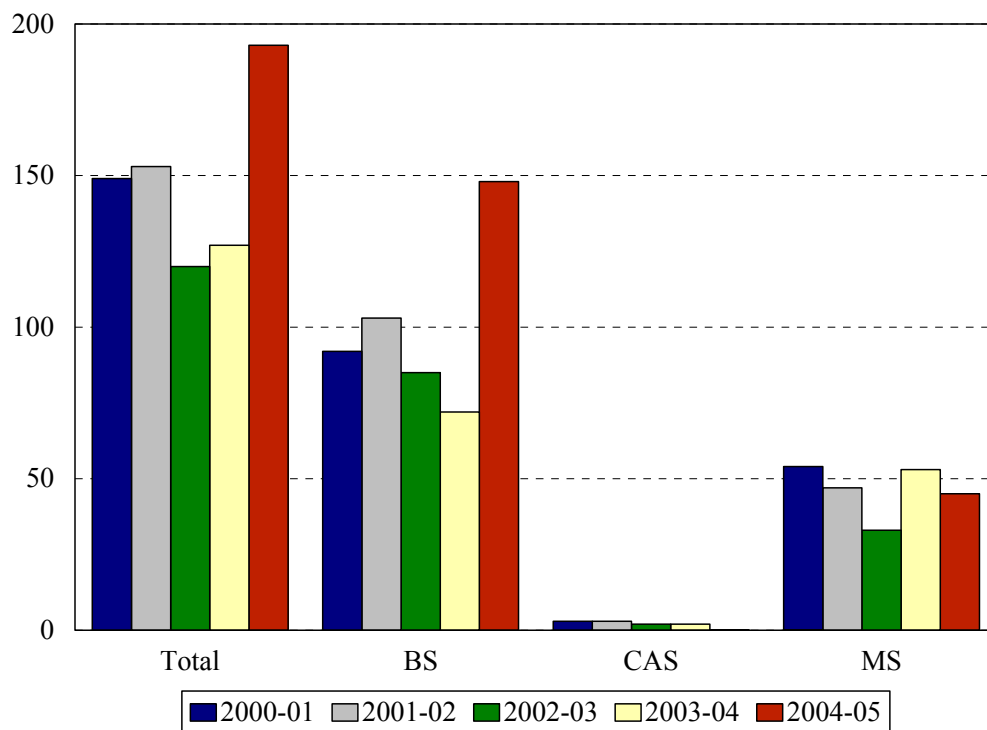
Student Level	Year									
	2001		2002		2003		2004		2005	
	N	%	N	%	N	%	N	%	N	%
Undergraduate	163	47%	133	47%	219	51%	204	53%	196	52%
Beginning Graduate	180	52%	192	52%	204	48%	181	47%	179	48%
Advanced Graduate	1	0%	0	0%	2	<1%	0	0%	0	0%
Total	344		325		425		385		375	

ENROLLMENT BY STUDENT LEVEL
COLLEGE OF NURSING

Program	Code	2001			2002		
		Undergraduates	Beginning Graduates	Advanced Graduates	Undergraduates	Beginning Graduates	Advanced Graduates
Accelerated Nursing BS	1143						
RN Completion BS	192	159			133		
Non-matriculated undergrad	000	4					
Family Nurse Practitioner CAS	920		5			4	
Women's Nurse Practitioner CAS	930			1		1	
Clinical Nurse Specialist MS	900						
Clinical Nurse Spec. Adult MS	901		16			11	
Clinical Nurse Spec. HRMI MS	902		2			2	
Family Nurse Practitioner MS	921		63			60	
Nurse Anesthesia MS: Kings	940		34			35	
Nurse Anesthesia MS: Harlem	941		24			30	
Nurse Midwifery Completion MS	950					1	
Nurse Midwifery: RN MS	966		13			10	
Women's Nurse Practitioner MS	931		7			5	
Non-matriculated	999		16			33	
Total		163	180	1	133	192	0
Change from previous year		-12%	1%		-18%	7%	-100%

Program	Code	2003			2004			2005		
		Undergraduates	Beginning Graduates	Advanced Graduates	Undergraduates	Beginning Graduates	Advanced Graduates	Undergraduates	Beginning Graduates	Advanced Graduates
Accelerated Nursing BS	1143	29			38			47		
RN Completion BS	192	187			166			147		
Non-matriculated undergrad	999	3						2		
Family Nurse Practitioner CAS	920			2		1			2	
Women's Nurse Practitioner CAS	930					1				
Clinical Nurse Specialist MS	900									
Clinical Nurse Spec. Adult MS	901		7			14			23	
Clinical Nurse Spec. HRMI MS	902		6			5			2	
Family Nurse Practitioner MS	921		70			61			77	
Nurse Anesthesia MS: Kings	940		44			40			36	
Nurse Anesthesia MS: Harlem	941		37			36			25	
Nurse Midwifery Completion MS	950		1							
Nurse Midwifery: RN MS	966		8			5			9	
Women's Nurse Practitioner MS	931		8			5				
Non-matriculated grad	999		23			13				
Total		219	204	2	204	181		196	179	
Change from previous year		65%	6%		-7%	-13%	-200%	-4%	-1%	

Degrees Granted by Level
College of Nursing
2000-2001 to 2004-2005



Degrees	Code	Year				
		2000-01	2001-02	2002-03	2003-04	2004-05
Generic-Nursing BS	291					
RN Completion BS	192	92	103	85	72	121
Accelerated Nursing	1143					27
Family Nurse Practitioner CAS	920	3	2	1	2	0
Women's Nurse Practitioner CAS	930	0	0	1	0	0
Clinical Nurse Specialist MS	900		1			
Clinical Nurse Spec. Adult MS	901	8	5	5	5	2
Clinical Nurse Spec. HRMI MS	902					2
Family Nurse Practitioner MS	921	22	16	13	22	18
Nurse Anesthesia MS: Kings	940	16	8	10	9	12
Nurse Anesthesia MS: Harlem	941				12	10
Nurse Midwifery Completion MS	950	2	8	0	0	0
Nurse Midwifery: RN MS	966	5	8	3	4	1
Women's Nurse Practitioner MS	931	1	2	0	1	0
Total		149	153	120	127	193
Change from previous year		7%	3%	-28%	6%	52%

COLLEGE OF NURSING
DEGREES EARNED BY ETHNIC GROUP

Ethnic Group	Year				
	2000-01	2001-02	2002-03	2003-04	2004-05
White	28	26	18	17	36
% change	-20%	-7%	-44%	-6%	112%
Black	108	115	85	92	139
% change	17%	6%	-35%	8%	51%
Hispanic	5	5	5	9	4
% change	67%	0%	0%	44%	-56%
Asian	4	4	4	7	13
% change	0%	0%	0%	43%	86%
Native American	0	0	0	0	0
% change					
International	0	0	5	1	0
% change				-400%	-100%
Unknown	4	3	3	1	1
% change	-25%	-33%	0%	-200%	0%
Total	149	153	120	127	193
Change from previous year	7%	3%	-28%	6%	52%