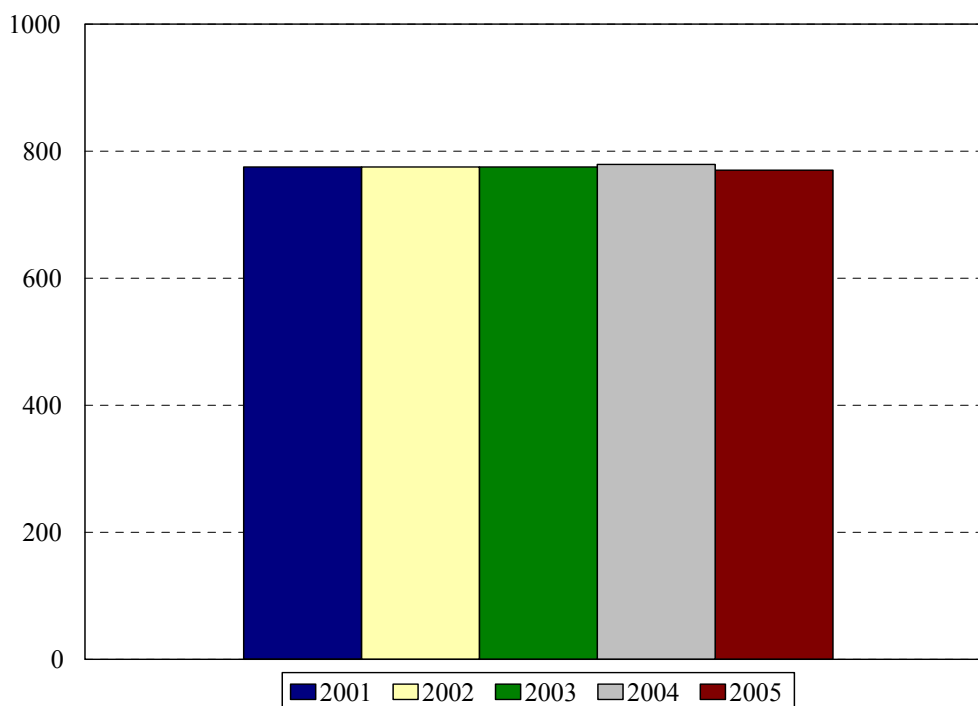


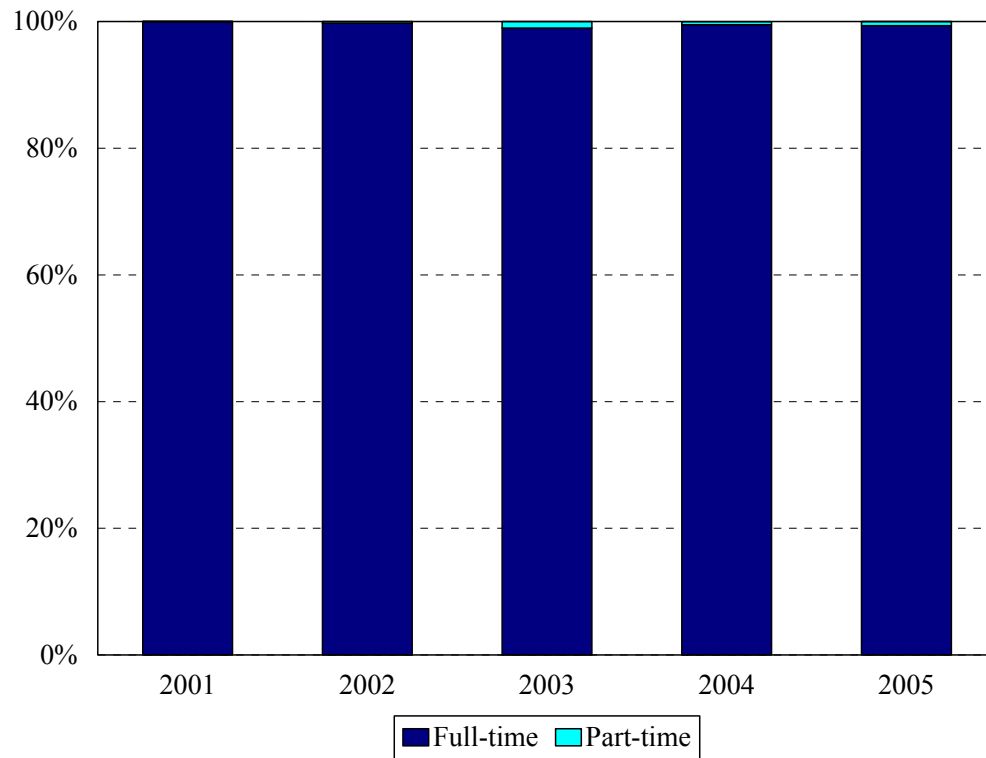
College of Medicine Enrollment
MD and MD/MPH
 Fall 2001 to Fall 2005



College of Medicine MD and MD/MPH	Year				
	2001	2002	2003	2004	2005
New students	188	184	180	172	185
Continuing students	587	592	595	607	585
Total	775	775	775	779	770
Change from previous year	0%	0%	0%	1%	-1%

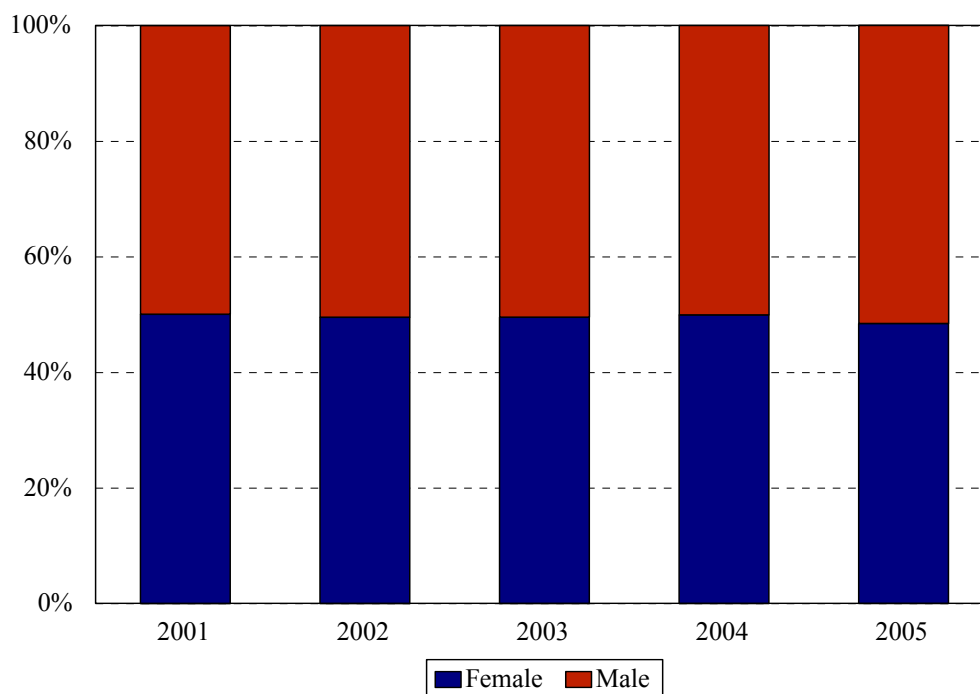
- College of Medicine MD Program totals reflect a planned reduction in entering class size to 180 beginning in 1997 and a planned increase beginning in 2000.
- The total in 2002 includes 6 students concurrently enrolled in the MPH Program, and the total in 2003, 10 students.
- The total in 2005 does not include 2 oral surgeons attending required college of medicine courses.

**College of Medicine: MD and MD/MPH
Enrollment by Full- and Part-time Status
Fall 2001 to Fall 2005**



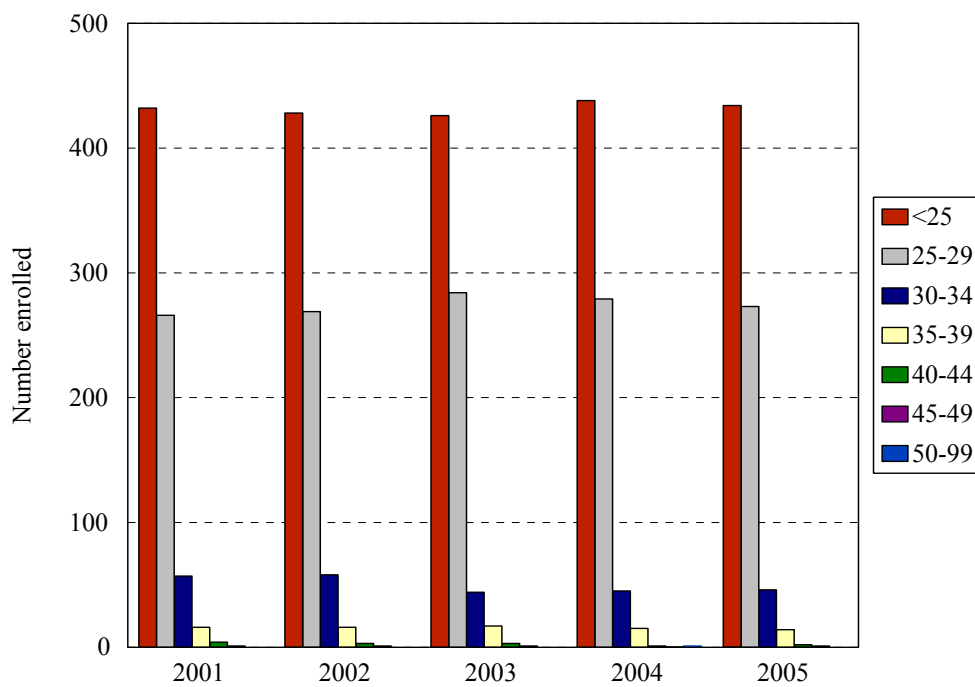
Enrollment Levels	Year				
	2001	2002	2003	2004	2005
Full-time	775	773	767	775	767
Part-time	0	2	8	4	3
% Full-time	100%	99+%	99%	99%	99%
Total	775	775	775	779	770

College of Medicine: MD and MD/MPH
Enrollment by Gender
Fall 2001 to Fall 2005



Gender	Year			Year			Year			Year			Year		
	2001			2002			2003			2004			2005		
	F	M	%F	F	M	%F	F	M	%F	F	M	%F	F	M	%F
New 1 st year	92	96	49%	80	104	44%	88	92	49%	88	84	51%	92	93	50%
Continuing	296	291	50%	304	287	51%	296	299	50%	301	306	50%	281	304	48%
Total	388	387	50%	384	391	50%	384	391	50%	389	390	50%	373	397	48%
Change from previous year			2%			0%			0%			0%			-2%

**College of Medicine: MD and MD/MPH
Enrollment by Age Level
Fall 2001 to Fall 2005**



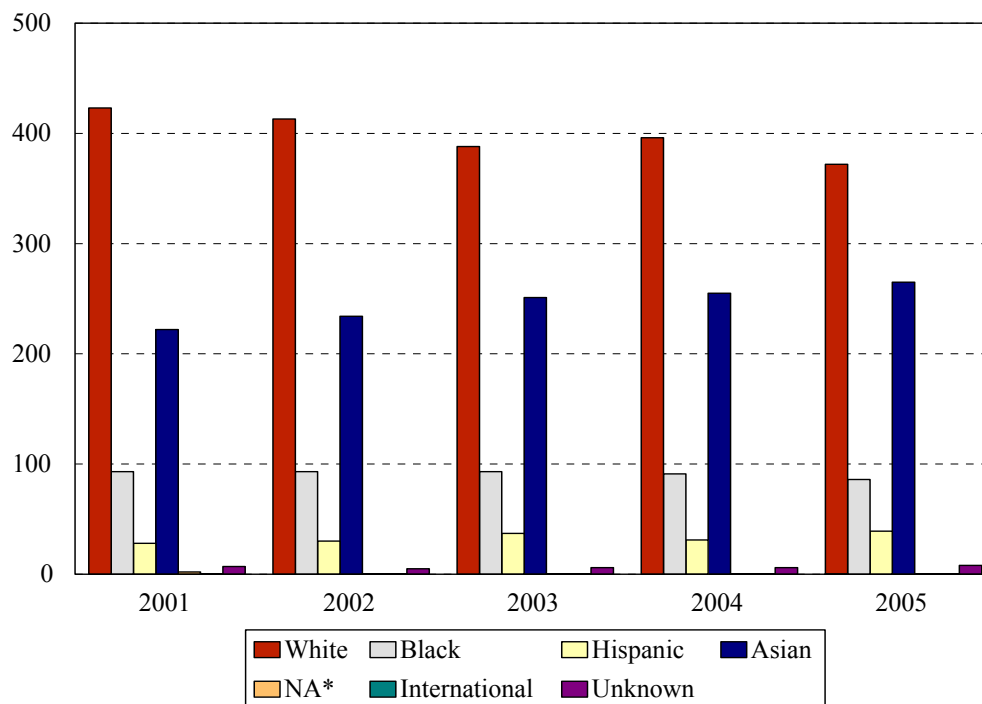
All Medical Students

Age	Year									
	2001		2002		2003		2004		2005	
	N	%	N	%	N	%	N	%	N	%
Under 25	432	56%	428	55%	426	55%	438	56%	434	56%
25-29	266	34%	269	35%	284	37%	279	36%	273	35%
30-34	57	7%	58	7%	44	6%	45	6%	46	6%
35-39	16	2%	16	2%	17	2%	15	2%	14	2%
40-44	4	1%	3	<1%	3	<1%	1	<1%	2	<1%
45-49	0	0%	1	<1%	1	<1%	0	0%	1	<1%
50 and over	0	0%					1	<1%		
Median age	24		24		24		24		25	
Age range	20-44		20-45		20-46		20-55		20-46	
Total	775		775		775		779		770	

New First Year Medical Students

Age	Year									
	2001		2002		2003		2004		2005	
	N	%	N	%	N	%	N	%	N	%
Under 25	147	78%	125	68%	148	82%	144	84%	144	78%
25-29	35	19%	47	26%	28	16%	20	12%	36	19%
30-34	4	2%	6	3%	2	1%	6	3%	5	3%
35-39	2	1%	5	3%	2	1%	2	1%	0	0%
40-44			1	1%					0	0%
45-49									0	0%
50 and over										
Median age	22		23		22		22		23	
Age range	20-35		20-40		20-36		20-38		20-34	
Total	188		184		180		172		185	

**College of Medicine: MD and MD/MPH
Enrollment by Ethnic Group
Fall 2001 to Fall 2005**



*Native American students numbered 3 in 2000, 2 in 2001, 0 in 2002, 0 in 2003 and 0 in 2004.

All Medical Students

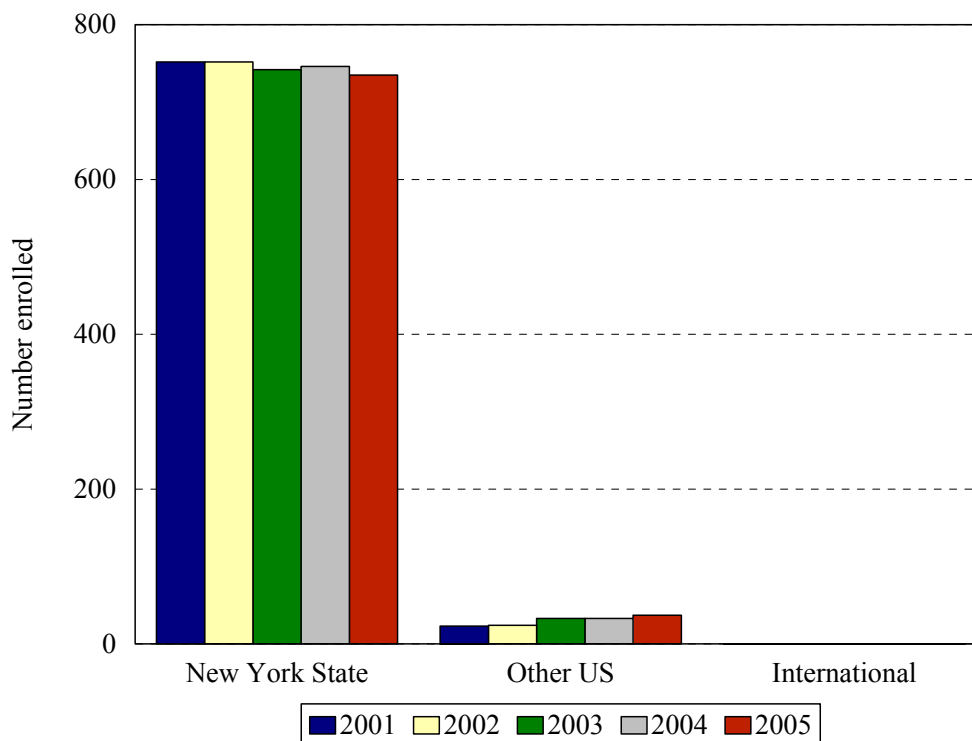
Ethnic Group (IPEDS Categories)	Year									
	2001		2002		2003		2004		2005	
	N	%	N	%	N	%	N	%	N	%
White	418	54%	423	55%	413	53%	396	51%	372	48%
Black	95	12%	93	12%	93	12%	91	12%	86	11%
Hispanic	30	4%	28	4%	30	4%	31	4%	39	5%
Asian/Pacific Islander	223	29%	222	29%	234	30%	255	33%	265	34%
Native American	3	0%	2	0%	0	0%	0	0%	0	0%
International	0	0%	0	0%	0	0%	0	0%	0	0%
Unknown	6	1%	7	1%	5	1%	6	1%	8	1%
<i>Black and Hispanic</i>	125	16%	121	16%	123	16%	122	16%	125	16%
Total	775		775		775		779		770	

- The Integrated Postsecondary Education Data Set (IPEDS) ethnic categories are those used by the U.S. Department of Education.

New First Year Medical Students

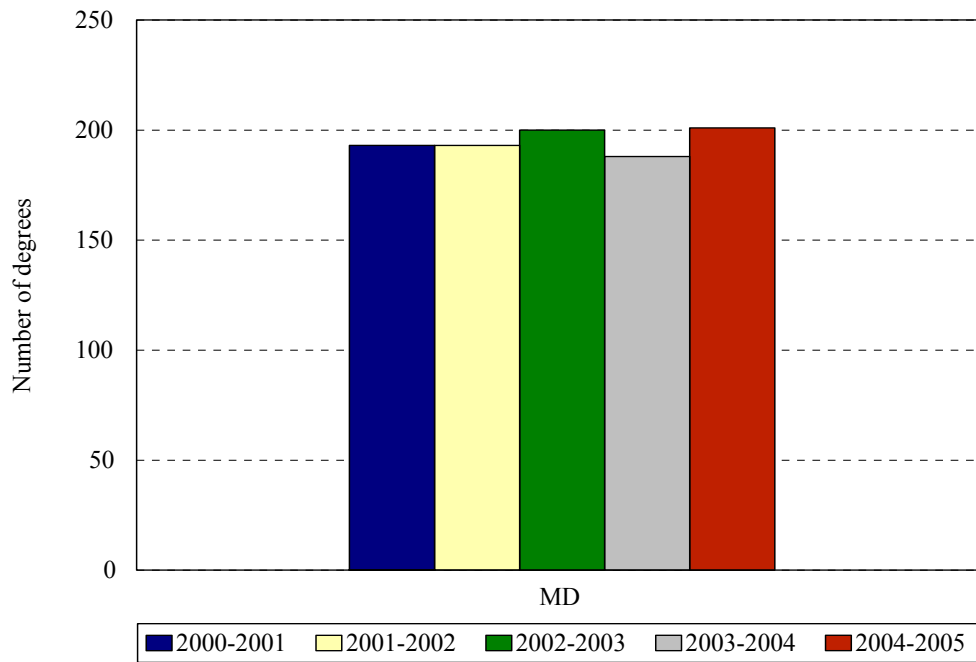
Ethnic Group (IPEDS Categories)	Year									
	2001		2002		2003		2004		2005	
	N	%	N	%	N	%	N	%	N	%
White	103	55%	96	52%	91	51%	98	57%	88	48%
Black	23	12%	19	10%	24	10%	17	10%	19	10%
Hispanic	3	2%	12	7%	13	7%	3	2%	11	6%
Asian/Pacific Islander	58	31%	56	30%	56	31%	54	31%	65	35%
Native American										
International										
Unknown	1	1%	1	1%	2	1%			2	1%
<i>Black and Hispanic</i>	26	14%	31	17%	37	17%	20	12%	30	16%
Total	188		184		180		172		185	

**College of Medicine: MD and MD/MPH
Enrollment by Permanent Residence
Fall 2001 to Fall 2005**



Residency	Year									
	2001		2002		2003		2004		2005	
	N	% of total	N	% of total	N	% of total	N	% of total	N	% of total
New York State	752	97%	751	97%	742	96%	746	96%	734	95%
New York City	537	69%	527	68%	512	66%	490	63%	468	61%
Bronx	19	2%	18	2%	17	2%	10	1%	12	2%
Kings (Brooklyn)	258	33%	249	32%	243	31%	229	29%	217	28%
Manhattan	72	9%	83	11%	81	10%	74	10%	74	10%
Queens	144	19%	142	18%	134	17%	140	18%	133	17%
Richmond (Staten I.)	44	6%	35	5%	37	5%	37	5%	32	4%
Other U.S.	23	3%	24	3%	33	4%	33	4%	37	5%
International	0	0%	0	0%	0	0%	0	0%	0	0%
Total	775		775		775		779		770	

**College of Medicine: MD and MD/MPH
Degrees Granted by Level
Fiscal Years 2000-2001 to 2004-2005**



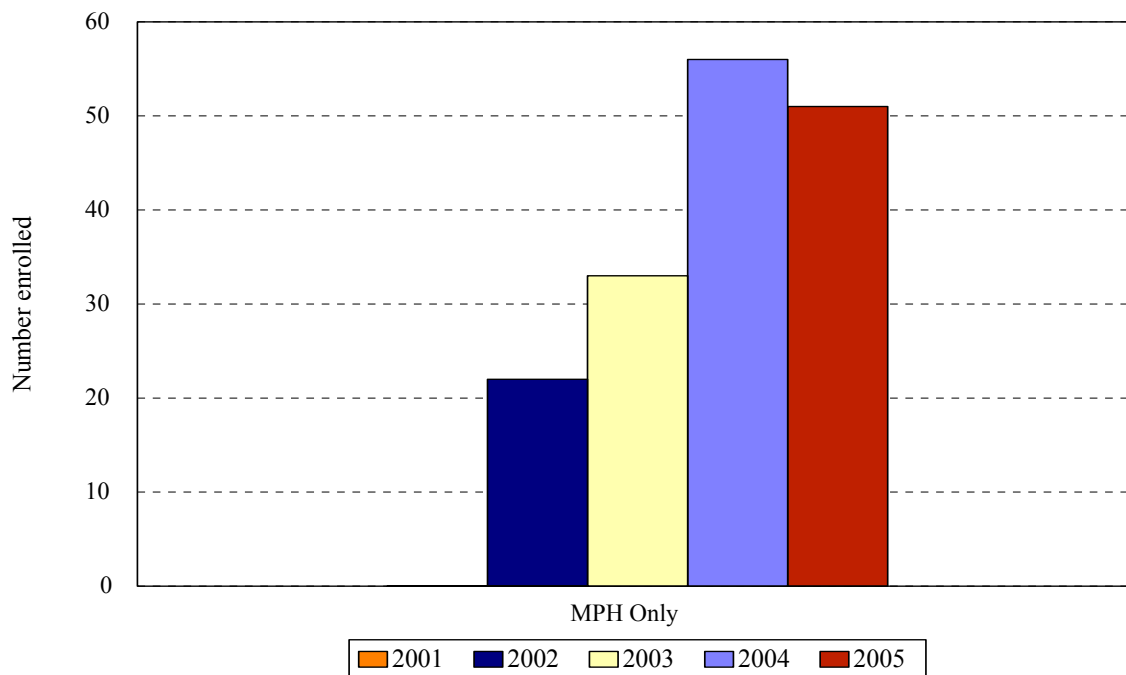
Degrees granted during July 1 (year 1) to June 30 (year 2) periods.

Degree Level	Year				
	2000-2001	2001-2002	2002-2003	2003-2004	2004-2005
Doctor of Medicine	193	193	200	188	201
Change from previous year	2%	0%	4%	-6%	7%

DEGREES EARNED BY ETHNIC GROUP
COLLEGE OF MEDICINE

Ethnic Group	Year				
	2000-2001	2001-2002	2002-2003	2003-2004	2004-2005
White	104	106	117	91	104
% change	-14%	1%	10%	-29%	14%
Black	26	18	21	23	25
% change	44%	3%	17%	9%	9%
Hispanic	9	10	9	7	4
% change	13%	12%	-10%	-29%	-43%
Asian	53	59	52	65	67
% change	23%	2%	-12%	20%	3%
Native American	1	0	0		
International	0	0	0		
% change					
Unknown	0	0	0	2	1
% change					-50%
Total	193	193	200	188	201
Change from previous year	2%	0%	4%	-6%	7%

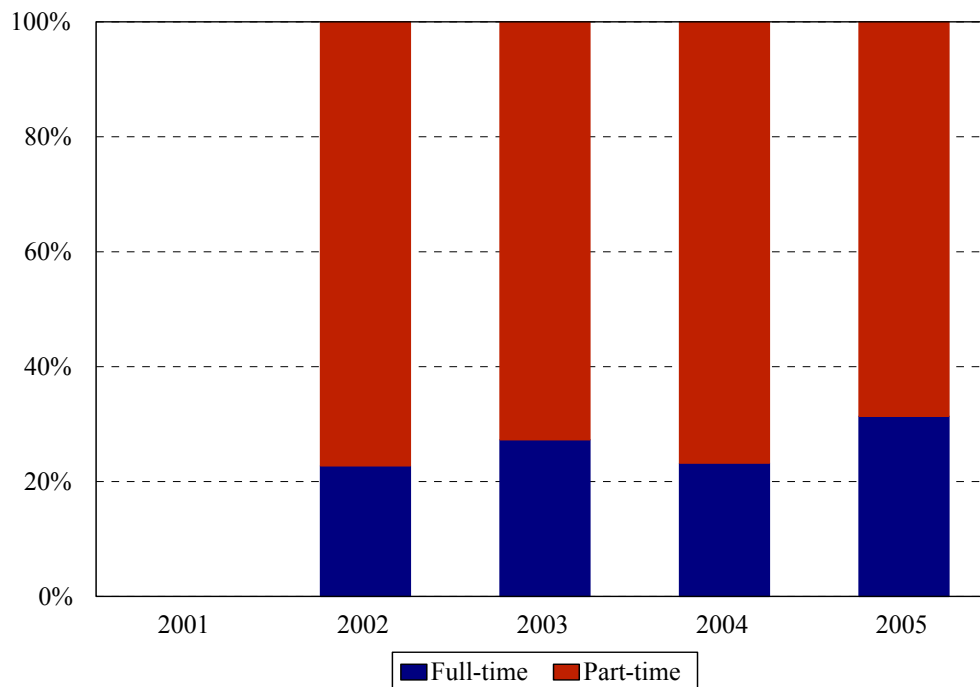
Masters of Public Health Fall 2001 to Fall 2005



College of Medicine MD and MD/MPH	Year				
	2001	2002	2003	2004	2005
New students		22	11	20	38
Continuing students		0	22	36	13
Total		22	33	56	51
Change from previous year			50%	41%	-9%

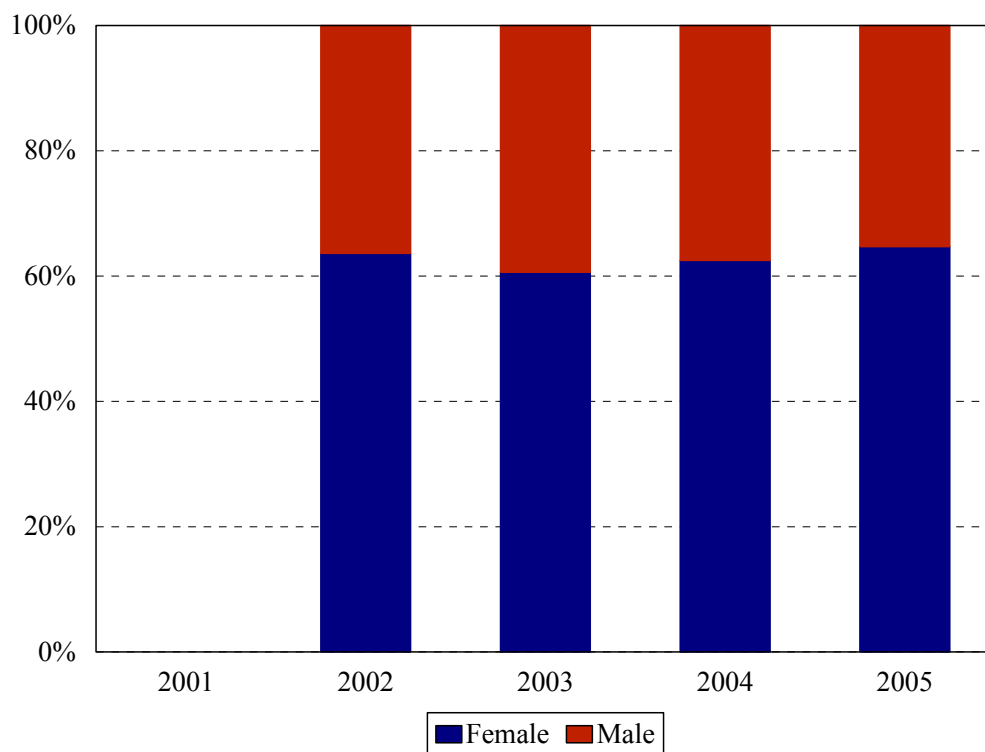
The totals do **not** include students concurrently enrolled in the MD/MPH Programs: 6 in 2002, 10 in 2003, 16 in 2004 and 17 in 2005.

**Masters of Public Health
Enrollment by Full- and Part-time Status
Fall 2001 to Fall 2005**



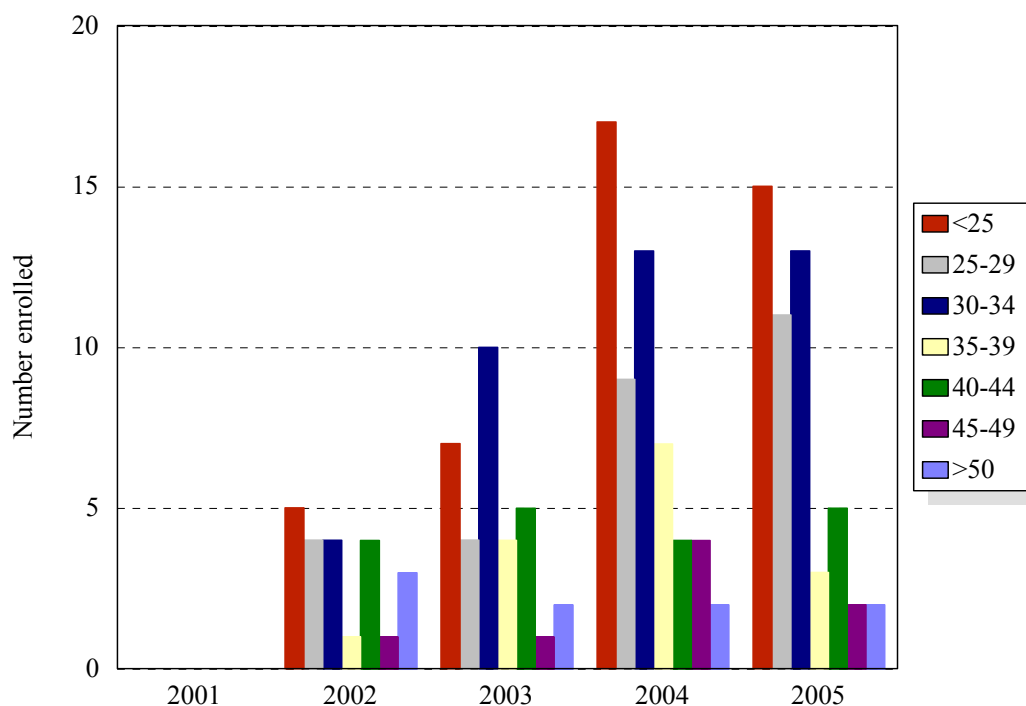
Enrollment Levels	Year				
	2001	2002	2003	2004	2005
Full-time		5	9	13	16
Part-time		17	24	43	35
% Full-time		23%	27%	23%	31%
Total		22	33	56	51

Masters of Public Health
Enrollment by Gender
Fall 2001 to Fall 2005



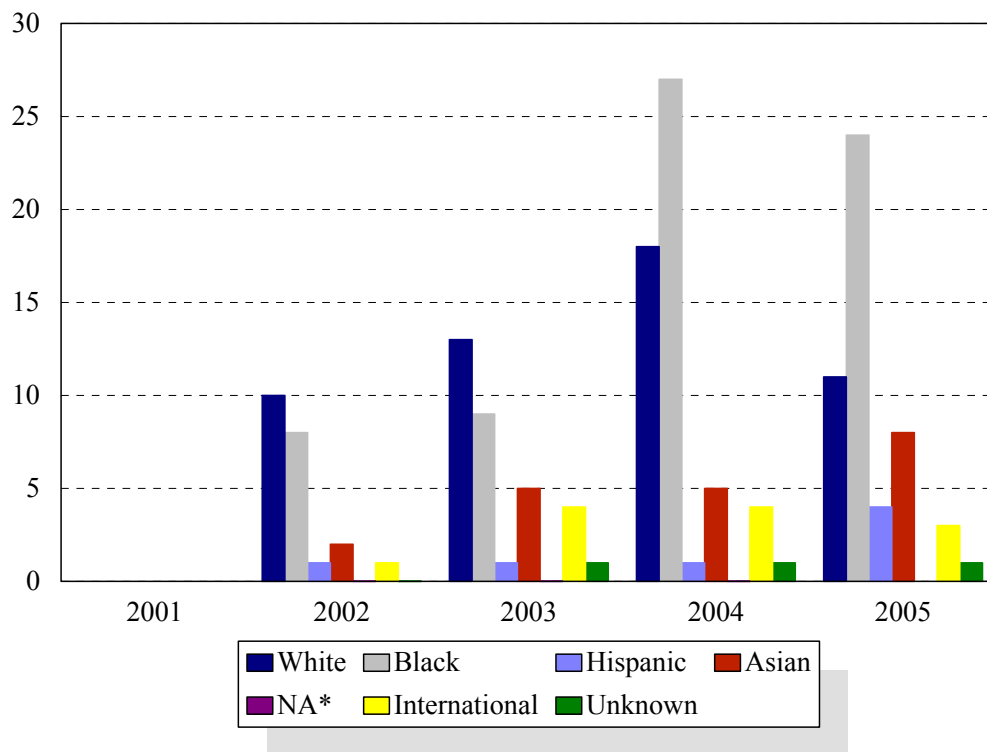
Gender	Year			Year			Year			Year			Year		
	2001			2002			2003			2004			2005		
	F	M	%F	F	M	%F	F	M	%F	F	M	%F	F	M	%F
Total				14	8	64%	20	13	61%	35	21	63%	33	18	65%
Change from previous year									-3%			2%			2%

Masters of Public Health Enrollment by Age Level Fall 2001 to Fall 2005



Age	Year									
	2001		2002		2003		2004		2005	
	N	%	N	%	N	%	N	%	N	%
Under 25			5	23%	7	21%	17	30%	15	29%
25-29			4	18%	4	12%	9	16%	11	22%
30-34			4	18%	10	30%	13	23%	13	25%
35-39			1	5%	4	12%	7	13%	3	6%
40-44			4	18%	5	15%	4	7%	5	10%
45-49			1	5%	1	3%	4	7%	2	4%
50 and over			3	14%	2	6%	2	4%	2	4%
Median age			31		31		31		31	
Age range			21-51		21-53		21-53		21-54	
Total			22		33		56		51	

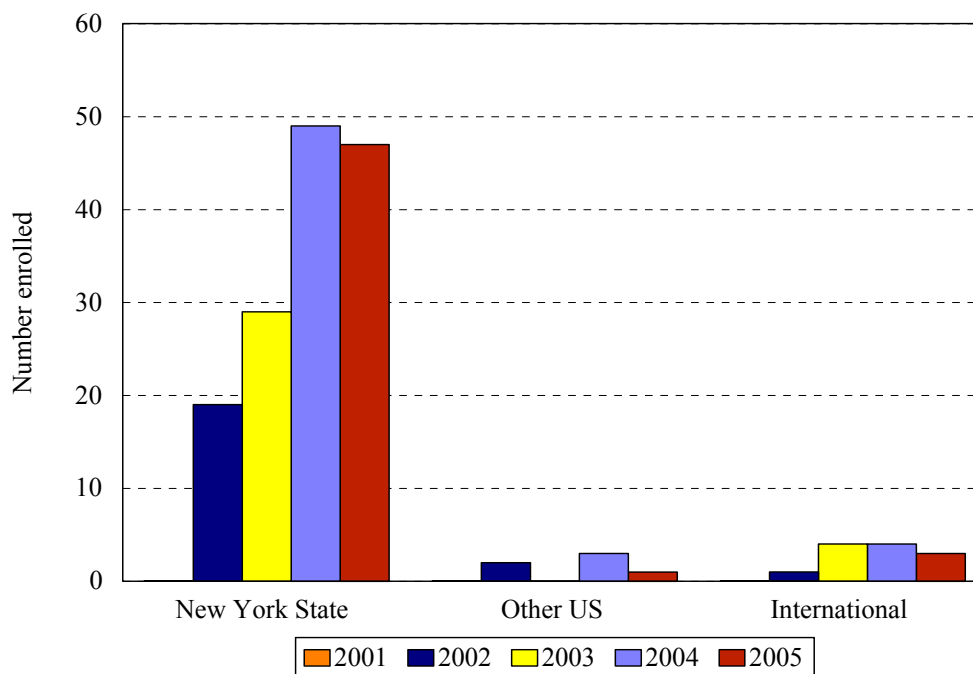
Masters of Public Health Enrollment by Ethnic Group Fall 2001 to Fall 2005



Ethnic Group (IPEDS Categories)	Year									
	2001		2002		2003		2004		2005	
	N	%	N	%	N	%	N	%	N	%
White			10	45%	13	39%	18	32%	11	22%
Black			8	36%	9	27%	27	48%	24	47%
Hispanic			1	5%	1	3%	1	2%	4	8%
Asian/Pacific Islander			2	9%	5	15%	5	9%	8	16%
Native American			0	0%	0	0%	0	0%	0	0%
International			1	5%	4	12%	4	7%	3	6%
Unknown				0%	1	3%	1	2%	1	2%
<i>Black and Hispanic</i>			9	41%	10	30%	28	50%	28	55%
Total			22		33		56		51	

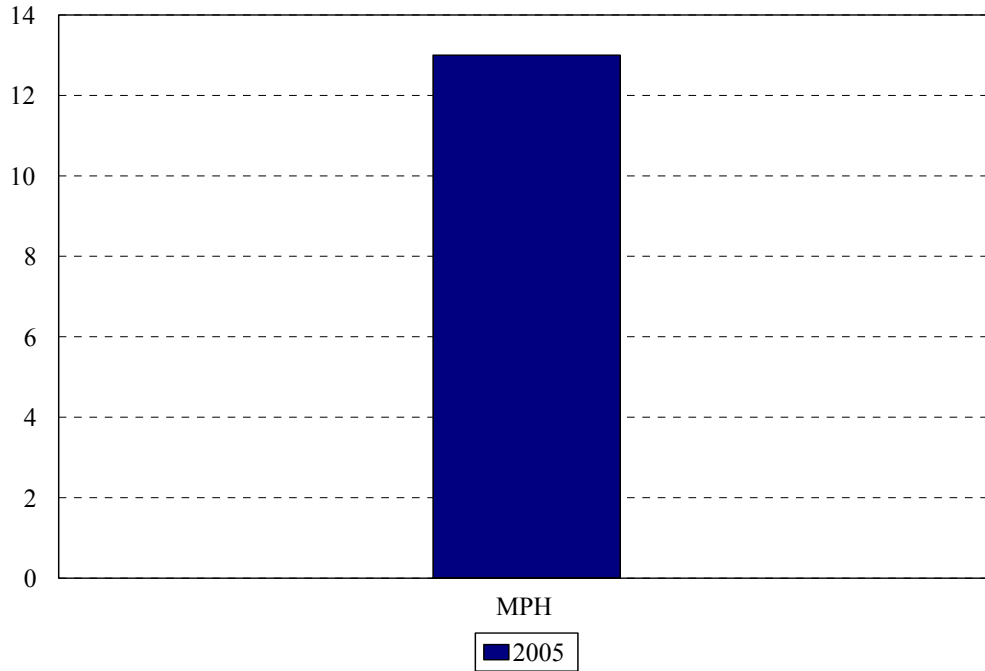
- The Integrated Postsecondary Education Data Set (IPEDS) ethnic categories are those used by the U.S. Department of Education.

College of Medicine: MPH Only
Enrollment by Permanent Residence
Fall 2001 to Fall 2005



Residency	Year									
	2001		2002		2003		2004		2005	
	N	% of total	N	% of total	N	% of total	N	% of total	N	% of total
New York State			13	59%	29	88%	49	88%	47	92%
New York City			13	59%	23	70%	40	71%	40	78%
Bronx			0	0%	1	3%	2	4%	1	2%
Kings (Brooklyn)			10	45%	17	52%	26	46%	28	55%
Manhattan			3	14%	3	9%	4	7%	5	10%
Queens			0	0%	2	6%	6	11%	5	10%
Richmond (Staten I.)			0	0%	0	0%	2	4%	1	2%
Other U.S.			2	9%	0	0%	3	5%	1	2%
International			1	5%	4	12%	4	7%	3	6%
Total			22		33		56		51	

College of Medicine: MPH
 Degrees Granted by Level
 Fiscal Years 2000-2001 to 2004-2005



Degree Level	Year				
	2000-2001	2001-2002	2002-2003	2003-2004	2004-2005
MPH					13
Change from previous year					

DEGREES EARNED BY ETHNIC GROUP
MASTERS IN PUBLIC HEALTH

Ethnic Group	Year				
	2000-2001	2001-2002	2002-2003	2003-2004	2004-2005
White					5
% change					
Black					4
% change					
Hispanic					0
% change					
Asian					2
% change					
Native American					0
International					2
% change					
Unknown					0
% change					
Total					13
Change from previous year					