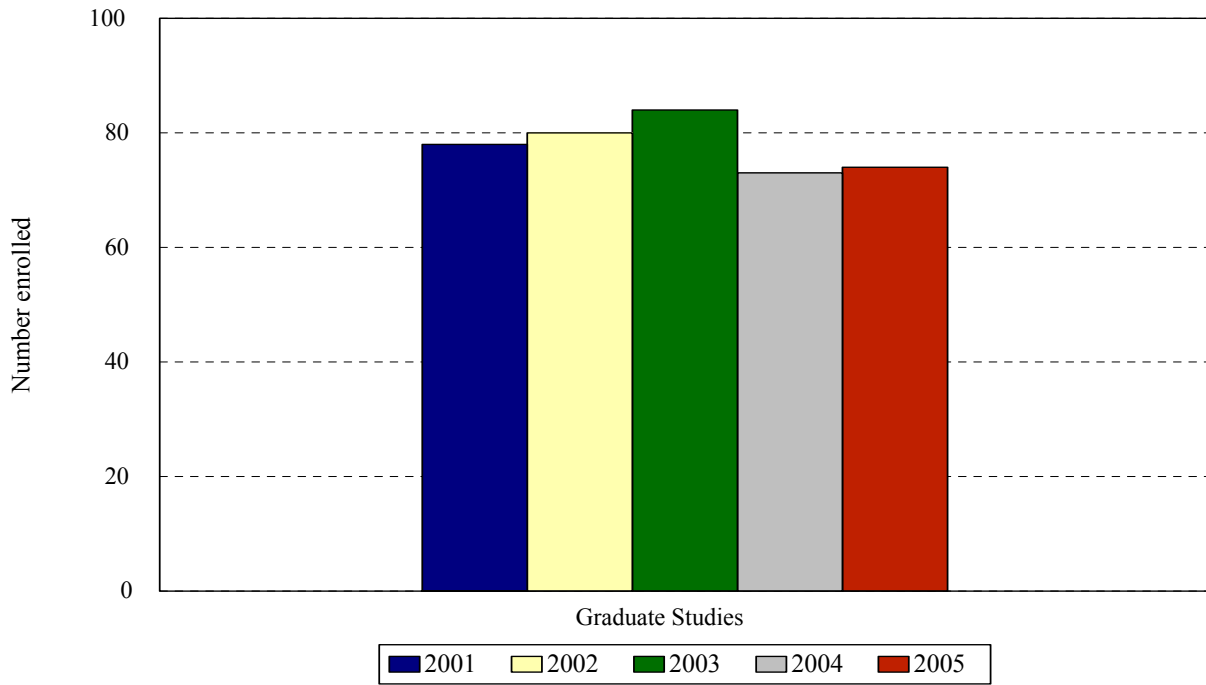
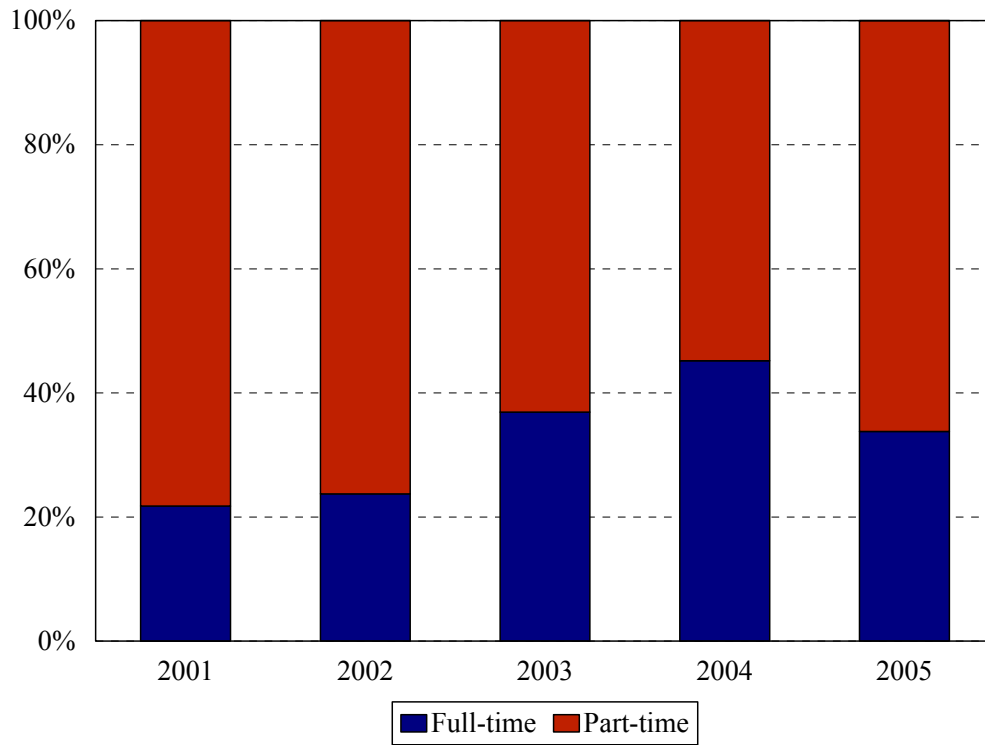


### School of Graduate Studies Enrollment Fall 2001 to Fall 2005



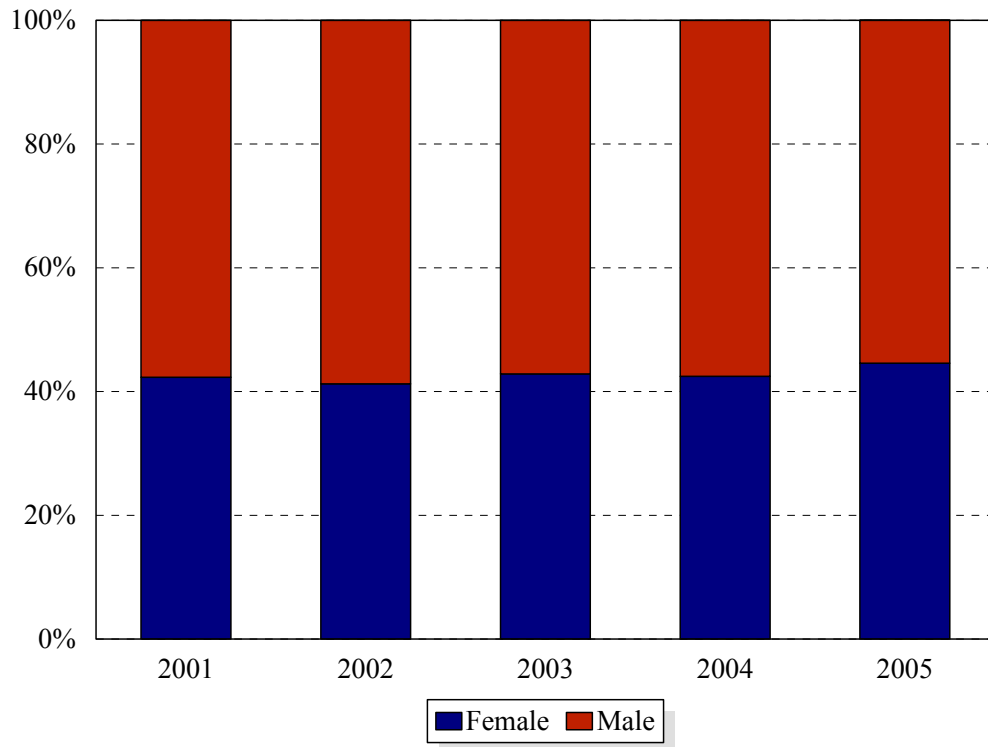
School	Year				
	2001	2002	2003	2004	2005
Graduate Studies	78	80	84	73	74
Change from previous year	4%	3%	5%	-15%	-1%

School of Graduate Studies  
Enrollment by Full- and Part-time Status  
Fall 2001 to Fall 2005



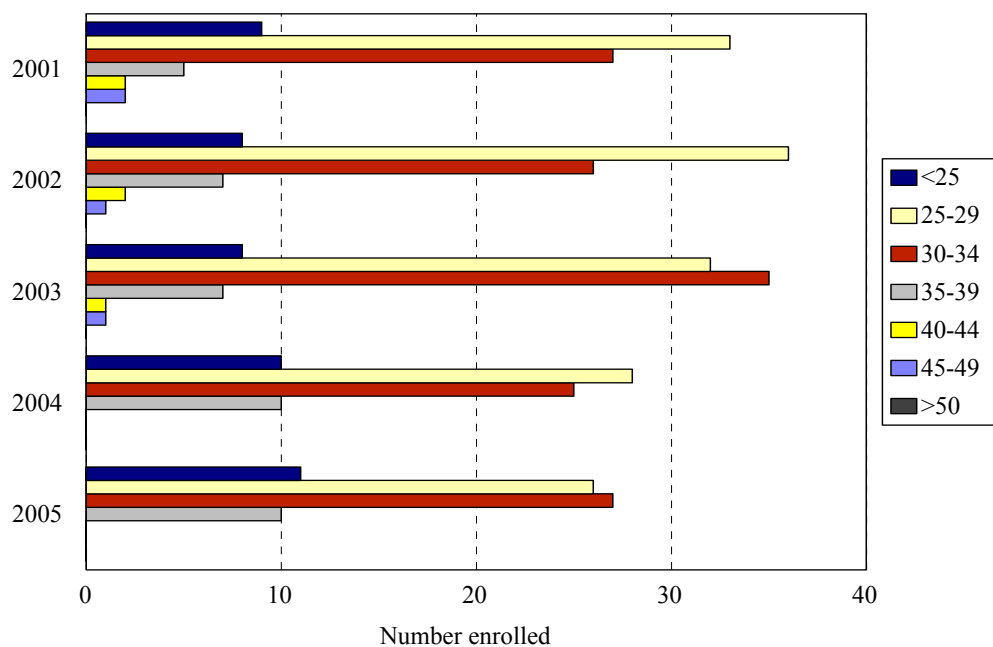
Enrollment Levels	Year				
	2001	2002	2003	2004	2005
Full-time	17	19	31	33	25
Part-time	61	61	53	40	49
% Full-time	22%	24%	37%	45%	34%
<b>Total</b>	<b>78</b>	<b>80</b>	<b>84</b>	<b>73</b>	<b>74</b>

### School of Graduates Studies Enrollment by Gender Fall 2001 to Fall 2005



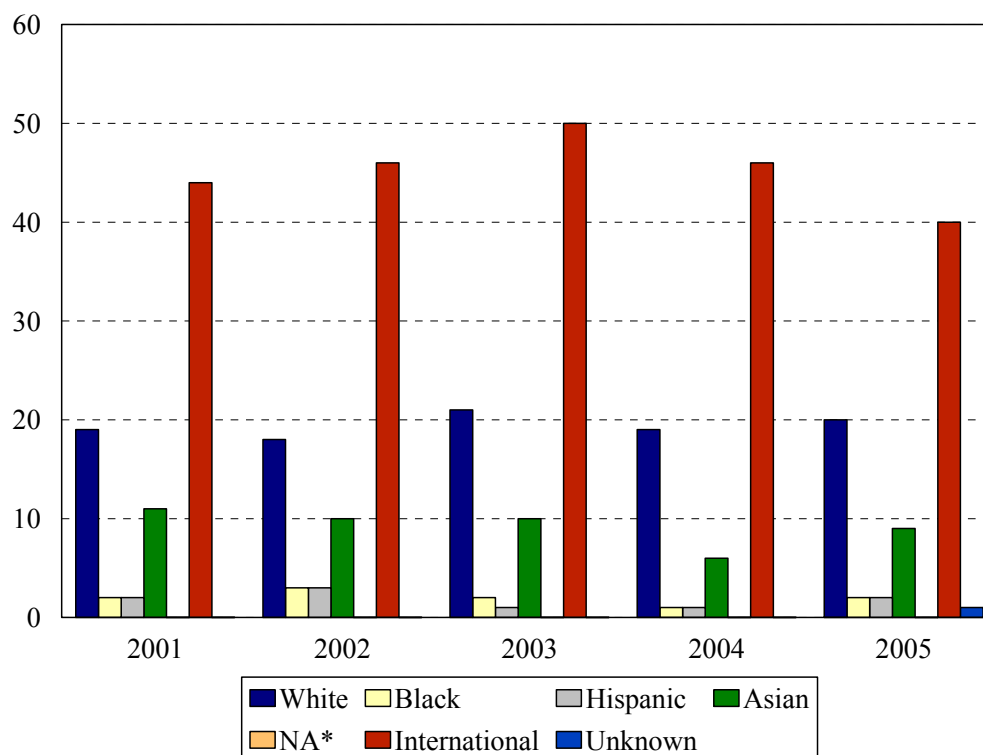
Gender	Year				
	2001	2002	2003	2004	2005
Female	33	33	36	31	33
Male	45	47	48	42	41
% Female	42%	41%	43%	42%	45%
<b>Total</b>	<b>78</b>	<b>80</b>	<b>84</b>	<b>73</b>	<b>74</b>

## School of Graduate Studies Enrollment by Age Level Fall 2001 to Fall 2005



Age	Year									
	2001		2002		2003		2004		2005	
	N	%	N	%	N	%	N	%	N	%
Under 25	9	12%	8	10%	8	10%	10	14%	11	15%
25-29	33	42%	36	45%	32	38%	28	38%	26	35%
30-34	27	35%	26	33%	35	42%	25	34%	27	36%
35-39	5	6%	7	9%	7	8%	10	14%	10	14%
40-44	2	3%	2	3%	1	1%	0	0%	0	0%
45-49	2	3%	1	1%	1	1%	0	0%	0	0%
50 and over	0	0%	0	0%	0	0%	0	0%	0	0%
<b>Median age</b>	<b>29</b>		<b>29</b>		<b>30</b>		<b>29</b>		<b>29.5</b>	
<b>Age range</b>	<b>22-48</b>		<b>23-48</b>		<b>21-49</b>		<b>19-38</b>		<b>21-39</b>	
<b>Total</b>	<b>78</b>		<b>80</b>		<b>84</b>		<b>73</b>		<b>74</b>	

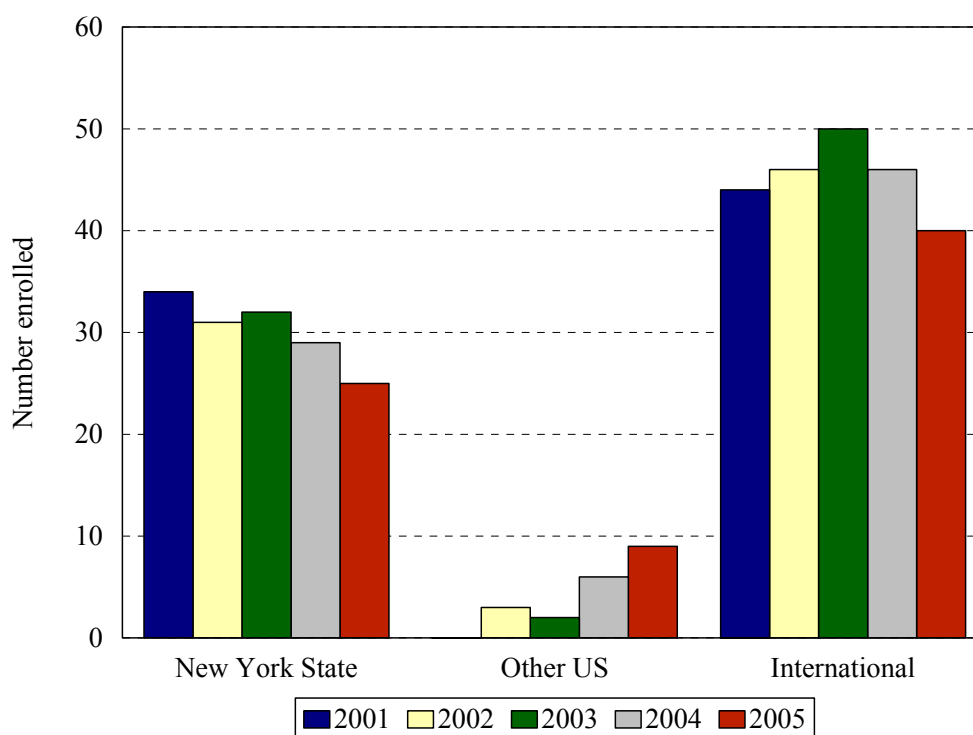
## School of Graduate Studies Enrollment by Ethnic Group Fall 2001 to Fall 2005



Ethnic Group (IPEDS Categories)	Year									
	2001		2002		2003		2004		2005	
	N	%	N	%	N	%	N	%	N	%
White	19	24%	18	23%	21	25%	19	26%	20	27%
Black	2	3%	3	4%	2	2%	1	1%	2	3%
Hispanic	2	3%	3	4%	1	1%	1	1%	2	3%
Asian/Pacific Islander	11	14%	10	13%	10	12%	6	8%	9	12%
Native American	0	0%	0	0%	0	0%	0	0%	0	0%
International	44	56%	46	58%	50	60%	46	63%	40	54%
Unknown	0	0%	0	0%	0	0%	0	0%	1	1%
% Black and Hispanic		5%		8%		4%		2%		6%
<b>Total</b>	<b>78</b>		<b>80</b>		<b>84</b>		<b>73</b>		<b>74</b>	

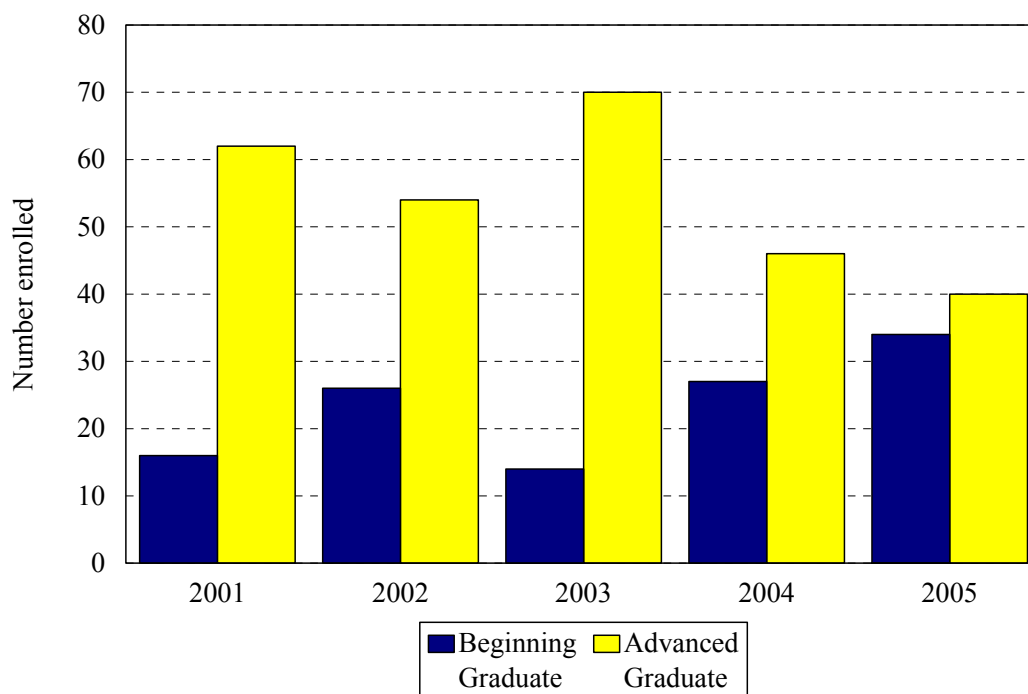
- The Integrated Postsecondary Education Data Set (IPEDS) ethnic categories are those used by the U.S. Department of Education.

School of Graduate Studies  
Enrollment by Permanent Residence  
Fall 2001 to Fall 2005



Residency	Year									
	2001		2002		2003		2004		2005	
	N	% of total	N	% of total	N	% of total	N	% of total	N	% of total
New York State	34	44%	31	39%	32	38%	21	29%	25	34%
New York City	25	32%	24	30%	26	31%	19	26%	22	30%
Bronx	1	1%	2	3%	1	1%	0	0%	0	0%
Kings (Brooklyn)	13	17%	13	16%	17	20%	15	21%	14	19%
Manhattan	3	4%	3	4%	1	1%	1	1%	3	4%
Queens	6	8%	6	8%	7	8%	2	3%	4	5%
Richmond (Staten I.)	2	3%	0	0%	0	0%	1	1%	1	1%
Other U.S.	0	0%	3	4%	2	2%	6	8%	9	12%
International	44	56%	46	58%	50	60%	46	63%	40	54%
<b>Total</b>	<b>78</b>		<b>80</b>		<b>84</b>		<b>73</b>		<b>74</b>	

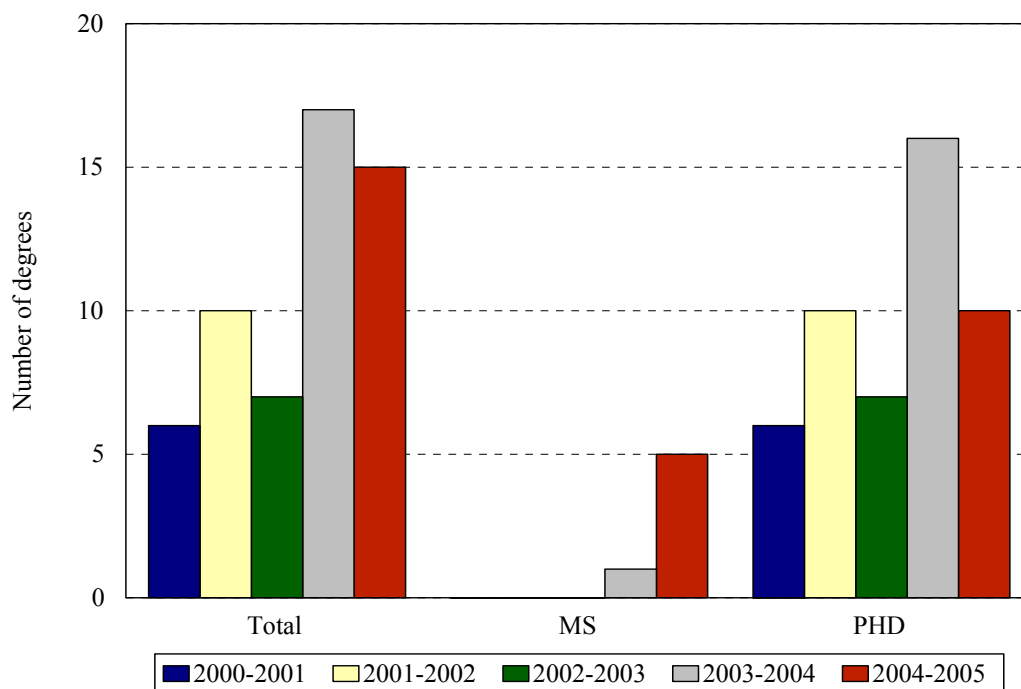
### School of Graduate Studies Enrollment by Student Level Fall 2001 to Fall 2005



Note: Beginning graduates are Ph.D. students who have completed 0-23 graduate credits; advanced graduates, 24 or more.

Age	Year									
	2001		2002		2003		2004		2005	
	N	%	N	%	N	%	N	%	N	%
Beginning Graduate	16	21%	26	33%	14	17%	27	37%	34	46%
Advanced Graduate	62	79%	54	67%	70	83%	46	63%	40	54%
<b>Total</b>	<b>78</b>	<b>100%</b>	<b>80</b>	<b>100%</b>	<b>84</b>	<b>100%</b>	<b>73</b>	<b>100%</b>	<b>74</b>	<b>100%</b>

### School of Graduate Studies Degrees Granted 2000-2001 to 2004-2005



	Year				
	2000-2001	2001-2002	2002-2003	2003-2004	2004-2005
<b>Master of Science</b>	0	0	0	1	5
Anatomy				1	1
Biochemistry					
Microbiology					4
Neural and Behavioral Science					
<b>Doctor of Philosophy</b>	6	10	7	16	10
Anatomy & Cell Biology	1	3	1	3	1
Biochemistry	1	3			
Microbiology & Immunology	1	2			
Molecular and Cell Biology			2	7	4
Neural and Behavioral Science	2	2	2		
Neuroscience				3	5
Pathology					
Pharmacology	1		2	3	
Physiology					
<b>Total</b>	<b>6</b>	<b>10</b>	<b>7</b>	<b>17</b>	<b>15</b>