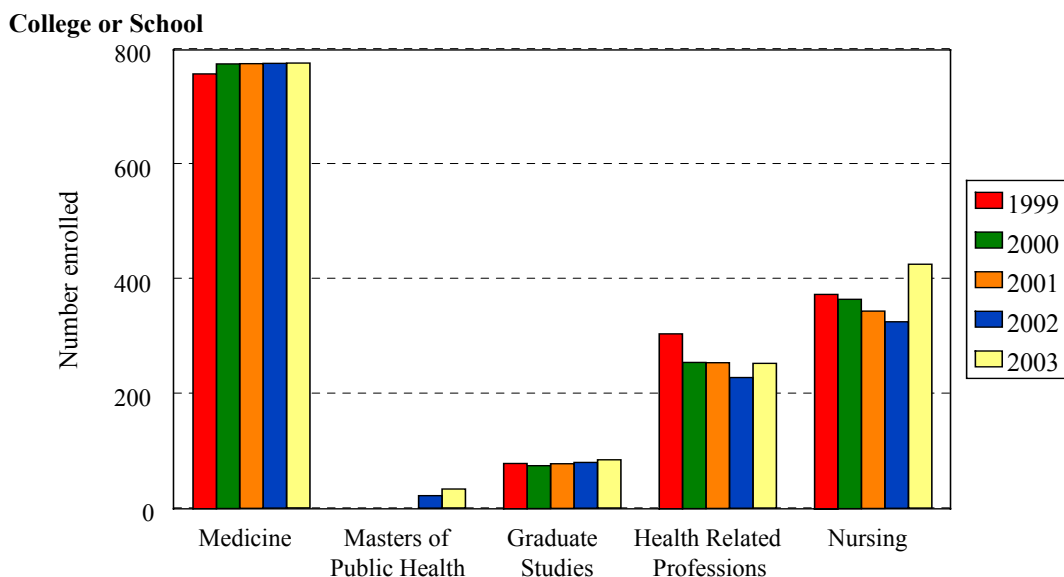


Total Enrollment Fall 1999 to Fall 2003

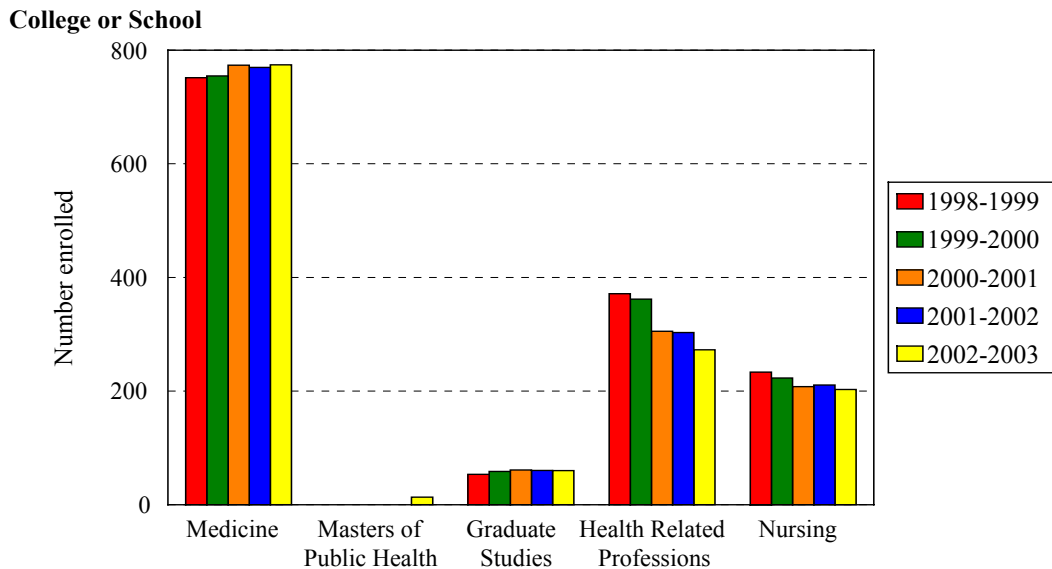


School	Year				
	1999	2000	2001	2002	2003
Medicine	758	775	775	775	775
Change from previous year	0%	2%	0%	0%	0%
Public Health				22	33
Change from previous year				--	50%
Graduate Studies	79	75	78	80	84
Change from previous year	8%	-5%	4%	3%	5%
Health Related Professions	305	255	254	228	252
Change from previous year	1%	-16%	0%	-10%	11%
Nursing	374	365	344	325	425
Change from previous year	7%	-2%	-6%	-6%	31%
Total	1,516	1,470	1,451	1,430	1,569
Change from previous year	2%	-3%	-1%	-1%	10%

School	Year									
	1999		2000		2001		2002		2003	
	N	% of total	N	% of total	N	% of total	N	% of total	N	% of total
Medicine	758	50%	775	53%	775	53%	775	54%	775	49%
Public Health							22	2%	33	2%
Graduate Studies	79	5%	75	5%	78	5%	80	6%	84	5%
HRP	305	20%	255	17%	254	18%	228	16%	252	16%
Nursing	374	25%	365	25%	344	24%	325	23%	425	27%
Total	1,516	100%	1,470	100%	1,451	100%	1,430	100%	1,569	100%

College of Medicine totals reflect a planned reduction in entering class size beginning in 1997 and a planned increase in 2000. In 2002, the MPH program was added under the College of Medicine, but is described separately.

Total Full Time Equivalents (FTE) Academic Years 1998-1999 to 2002-2003

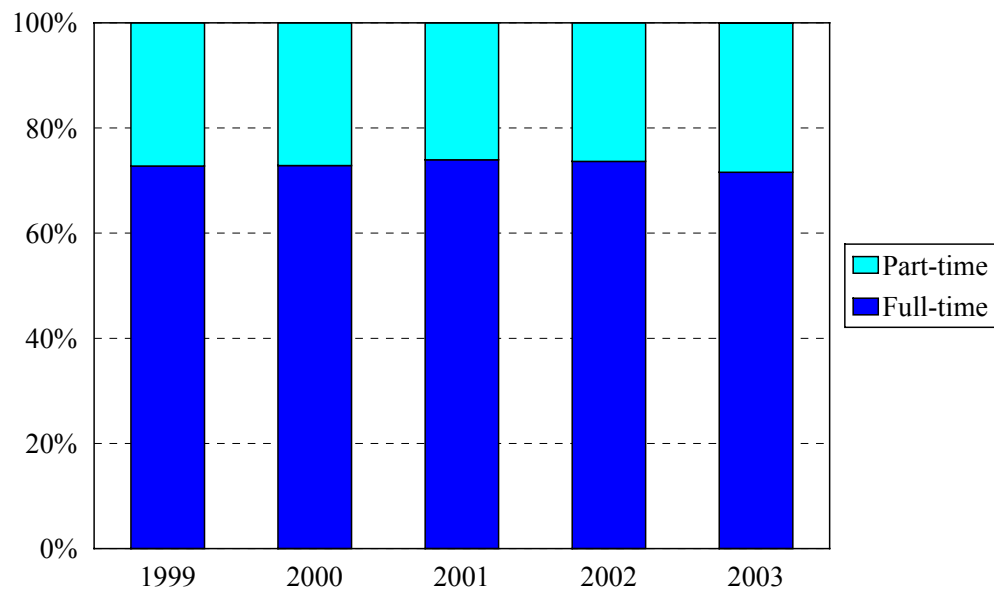


School	Year				
	1998-1999	1999-2000	2000-2001	2001-2002	2002-2003
Medicine	751.50	754.50	773.50	769.50	774.00
Change from previous year		0%	3%	-1%	1%
Public Health					13.2
Change from previous year					
Graduate Studies	53.58	58.59	61.21	60.38	59.92
Change from previous year		9%	4%	-1%	-1%
Health Related Professions	371.34	362.02	305.39	303.12	272.70
Change from previous year		-3%	-16%	-1%	-10%
Nursing	233.43	223.16	207.96	210.68	202.83
Change from previous year		-4%	-7%	1%	-4%
Total	1409.85	1398.27	1348.06	1343.667	1322.62
Change from previous year		-1%	-4%	0%	-2%

School	Year									
	1998-1999		1999-2000		2000-2001		2001-2002		2002-2003	
	FTE	% of total	FTE	% of total	FTE	% of total	FTE	% of total	FTE	% of total
Medicine	751.5	53.30%	754.5	53.96%	773.5	57.38%	769.5	57.27%	774	58.52%
Public Health									13.2	1.00%
Graduate Studies	53.58	3.80%	58.59	4.19%	61.21	4.54%	60.38	4.49%	59.92	4.53%
HRP	371.34	26.34%	362.02	25.89%	305.39	22.65%	303.12	22.56%	272.7	20.62%
Nursing	233.43	16.56%	223.16	15.96%	207.96	15.43%	210.68	15.68%	202.83	15.34%
Total	1,409.85		1,398.27		1,348.06		1,343.67		1,322.62	

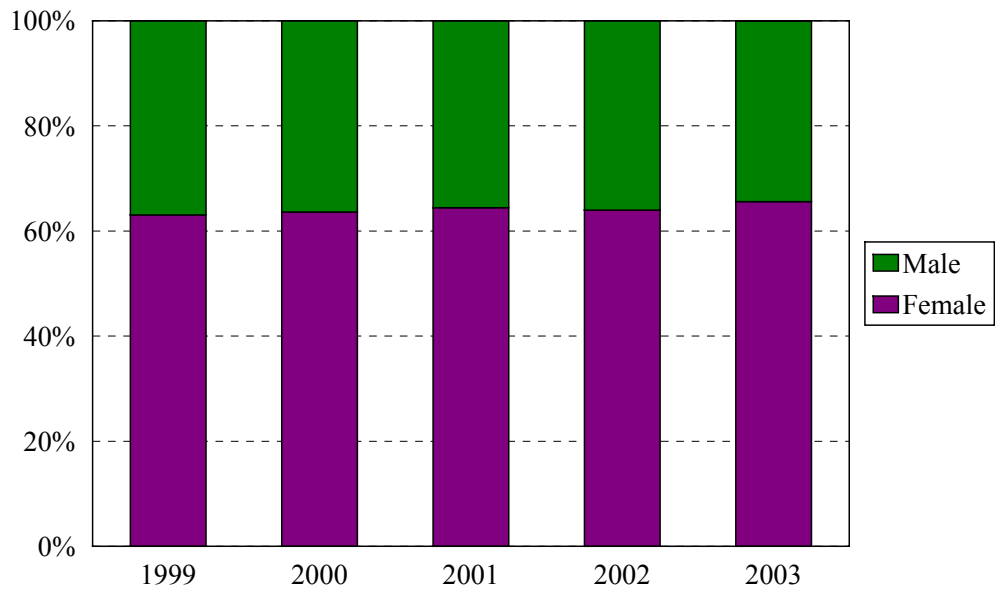
Full Time Equivalents (FTE) are computed as the sum over an academic year (summer, fall, and spring) of the following: 1) All undergraduate credits divided by 30, 2) all graduate credits with the exception of advanced Ph.D. and post-master's certificate students divided by 24, 3) medical student headcount for fall and spring divided by 2, and 4) full-time advanced Ph.D. and post master's certificate headcount plus .75 of the part-time advanced Ph.D. and post master's certificate headcount.

Total Enrollment by Full- and Part-time Status Fall 1999 to Fall 2003



Enrollment Levels	Year				
	1999	2000	2001	2002	2003
Full-time	1,103	1,071	1,073	1,053	1,123
Part-time	413	399	378	377	446
% Full-time	73%	73%	74%	74%	72%
Total	1,516	1,470	1,451	1,430	1,569

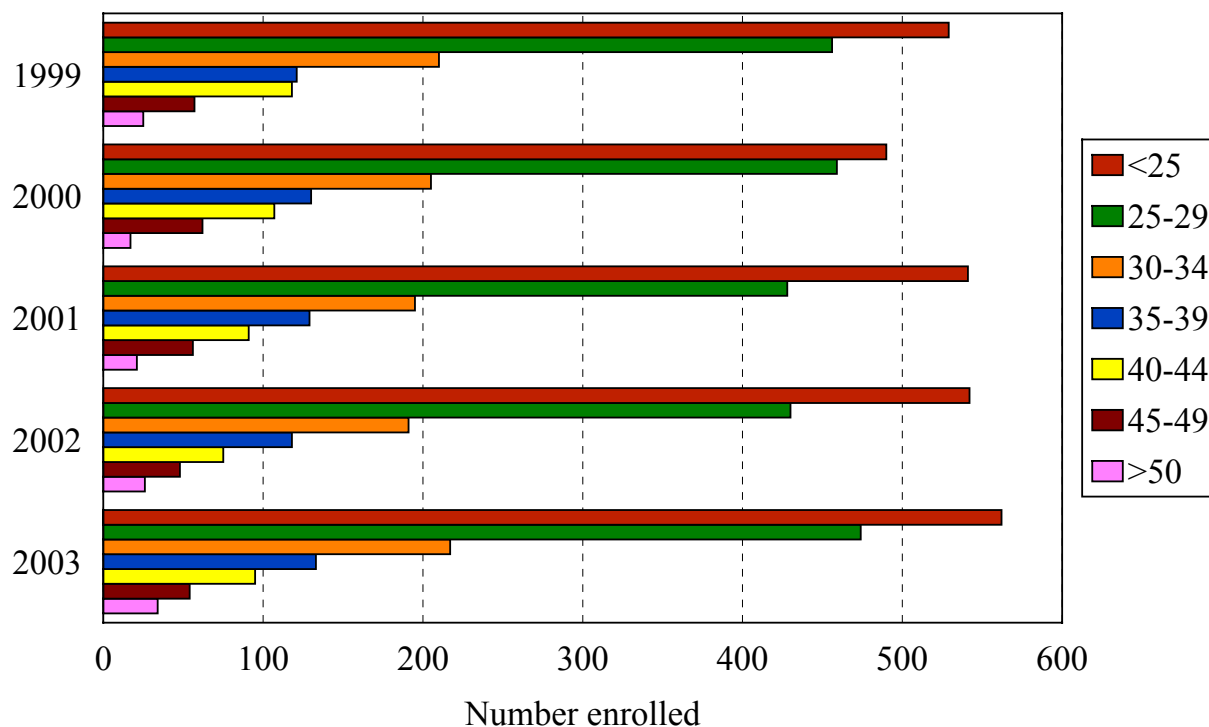
Total Enrollment by Gender Fall 1999 to Fall 2003



Gender	Year				
	1999	2000	2001	2002	2003
Female	956	935	935	915	1029
Male	560	535	516	515	540
% Female	63%	64%	64%	64%	66%
Total	1,516	1,470	1,451	1,430	1,569

Total Enrollment by Age Level

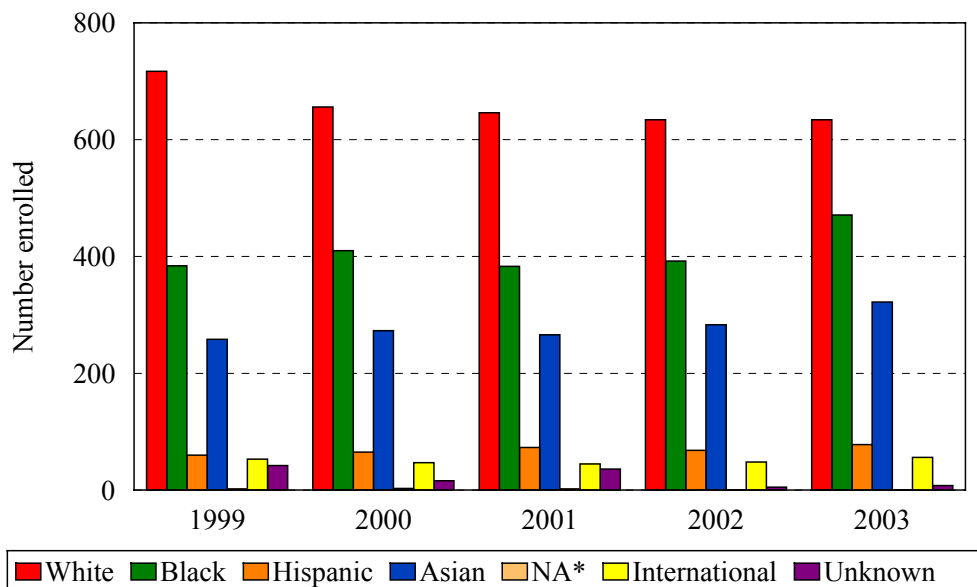
Fall 1999 to Fall 2003



Age	Year									
	1999		2000		2001		2002		2003	
	N	%	N	%	N	%	N	%	N	%
Under 25	529	34%	490	33%	541	37%	542	38%	562	36%
25-29	456	30%	459	31%	428	30%	430	30%	474	30%
30-34	210	14%	205	14%	195	13%	191	13%	217	14%
35-39	121	8%	130	9%	129	9%	118	8%	133	8%
40-44	118	8%	107	7%	81	6%	75	5%	95	6%
45-49	57	4%	62	4%	56	4%	48	3%	54	3%
50 and over	25	2%	17	1%	21	1%	26	2%	34	2%
Median Age	26		26		26		26		26	
Age Range	19-62		19-60		18-58		19-59		18-68	
Total	1,516		1,470		1,451		1,430		1,569	

Total Enrollment by Ethnic Group

Fall 1999 to Fall 2003



*Native American: 2 in 1999, 3 in 2000, 2 in 2001, 0 in 2002, 0 in 2003.

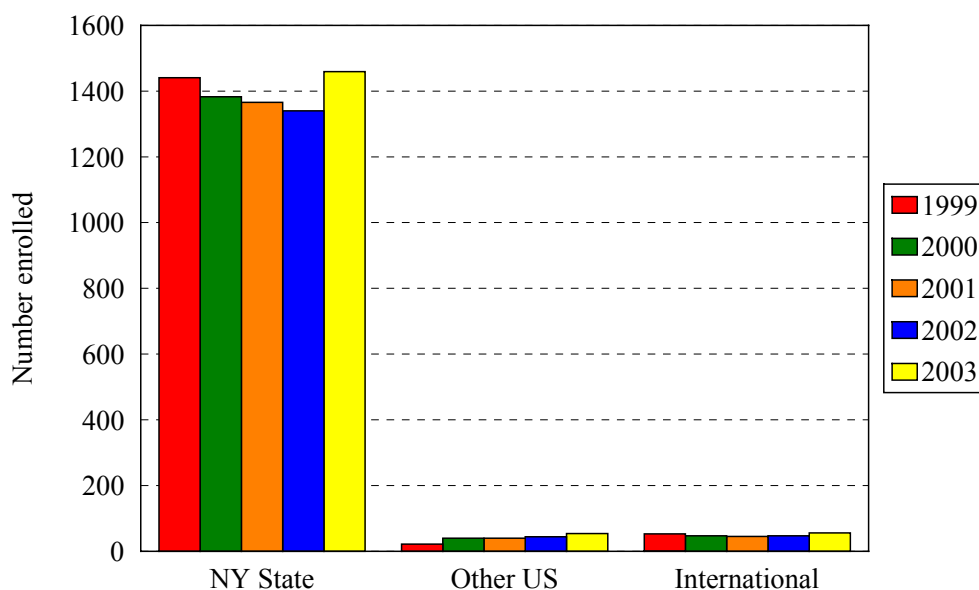
Ethnic Group (IPEDS Categories)	Year									
	1999		2000		2001		2002		2003	
	N	%	N	%	N	%	N	%	N	%
White	717	47%	656	45%	646	45%	634	44%	634	40%
Asian/Pacific Islander	258	17%	273	19%	266	18%	283	20%	322	21%
Hispanic	60	4%	65	4%	73	5%	68	5%	78	5%
Black	384	25%	410	28%	383	26%	392	27%	471	30%
Native American	2	<1%	3	0%	2	0%	0	0%	0	0%
International	53	4%	47	3%	45	3%	48	3%	56	4%
Unknown	42	3%	16	1%	36	2%	5	0%	8	0%
<i>% Black and Hispanic</i>		29%		32%		31%		32%		35%
Total	1,516	100%	1,470	100%	1,451	100%	1,430	100%	1,569	100%

- The Integrated Postsecondary Education Data Set (IPEDS) ethnic categories are those used by the U.S. Department of Education.

Fix

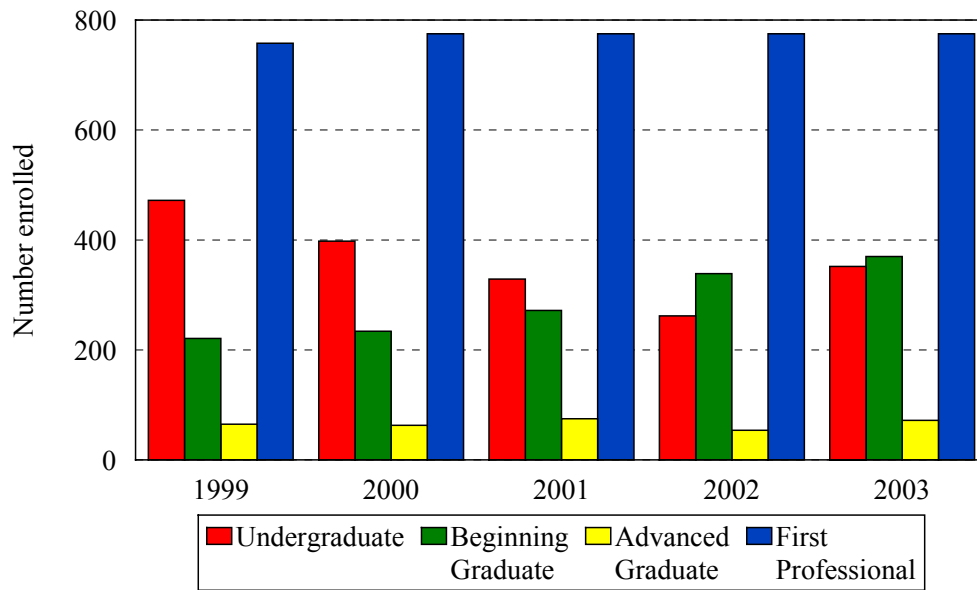
Total Enrollment by Permanent Residence

Fall 1999 to Fall 2003



Residency	Year									
	1999		2000		2001		2002		2003	
	N	%	N	%	N	%	N	%	N	%
New York State	1,441	95%	1383	94%	1,366	94%	1,338	94%	1,459	93%
New York City	1,138	75%	985	67%	1,061	73%	1028	72%	1118	71%
Bronx	36	2%	37	3%	39	3%	42	3%	45	3%
Kings (Brooklyn)	685	45%	556	38%	599	41%	573	40%	646	41%
Manhattan	103	7%	87	6%	95	7%	117	8%	122	8%
Queens	243	16%	236	16%	264	18%	250	17%	260	17%
Richmond (Staten I.)	71	5%	69	5%	64	4%	46	3%	45	3%
Other U.S.	22	1%	40	3%	40	3%	44	3%	54	3%
International	53	3%	47	3%	45	3%	48	3%	56	4%
Total	1,516		1,470		1,451		1,430		1,569	

Total Enrollment by Student Level Fall 1999 to Fall 2003

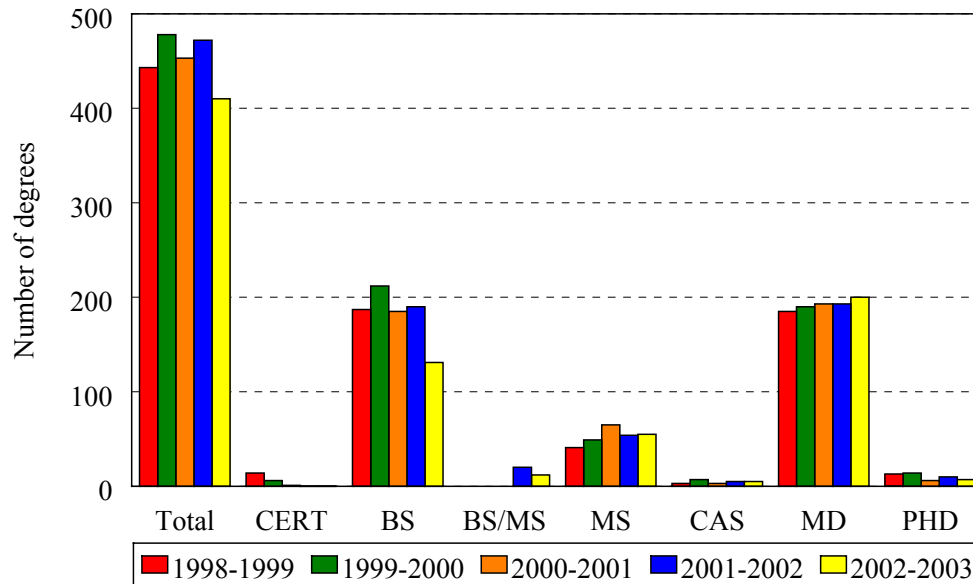


Note: Beginning Ph.D. and Advanced Certificate students have completed 0-23 graduate credits; advanced graduates have completed 24 or more. First professional students are medical students

Student Level	Year									
	1999		2000		2001		2002		2003	
	N	%	N	%	N	%	N	%	N	%
Undergraduate	472	31%	398	27%	329	23%	262	18%	352	22%
Beginning Graduate	221	15%	236	16%	284	20%	339	24%	370	24%
Advanced Graduate	65	4%	61	4%	63	4%	54	4%	72	5%
First Professional	758	50%	775	53%	775	53%	775	54%	775	49%
Total	1,516	100%	1,470	100%	1,451	100%	1,430	100%	1,569	100%

Level	Year									
	1999		2000		2001		2002		2003	
	Full-time	Part-Time	Full-time	Part-Time	Full-time	Part-Time	Full-time	Part-Time	Full-time	Part-Time
Undergraduate	250	222	206	192	166	163	142	120	187	165
	53%	47%	52%	48%	50%	50%	78%	22%	53%	47%
Graduate	853	191	865	207	907	215	911	257	936	281
	82%	18%	81%	19%	81%	19%	51%	46%	77%	23%

Total Degrees Granted by Level 1998-1999 to 2002-2003



Degrees granted during July1 (year 1)-June 30 (year 2) periods

Degree Level	Year				
	1998-1999	1999-2000	2000-2001	2001-2002	2002-2003
Certificate	14	6	1	0	0
Bachelor of Science	187	212	185	190	131
BS/MS				20	12
Master of Science	41	49	65	54	55
Certificate of Advanced Study	3	7	3	5	5
Doctor of Medicine	185	190	193	193	200
Doctor of Philosophy	13	14	6	10	7
Total	443	478	453	472	410

* Combined BSMS in Physical Therapy.