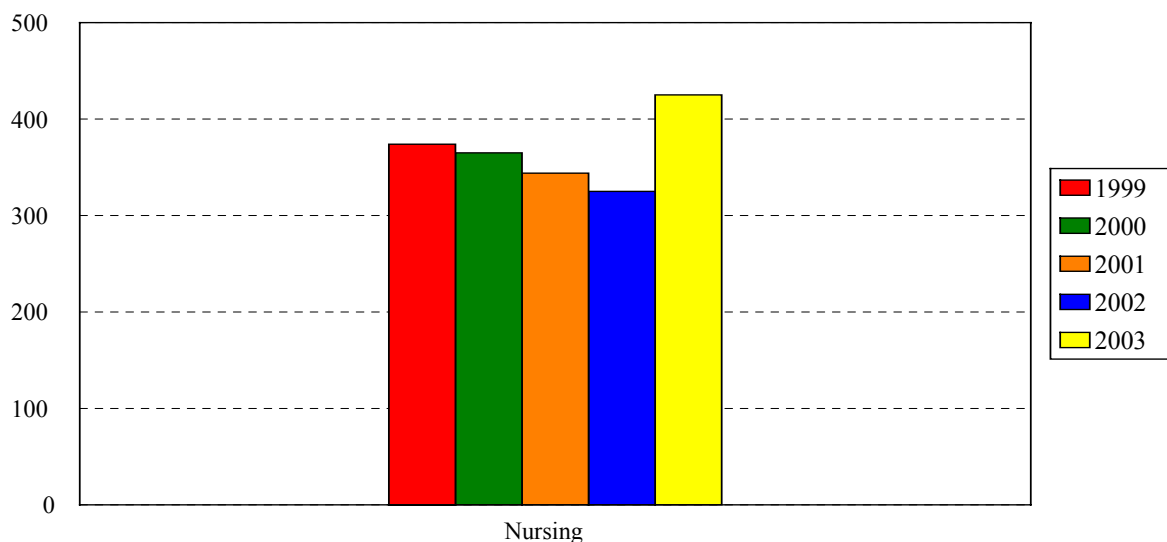


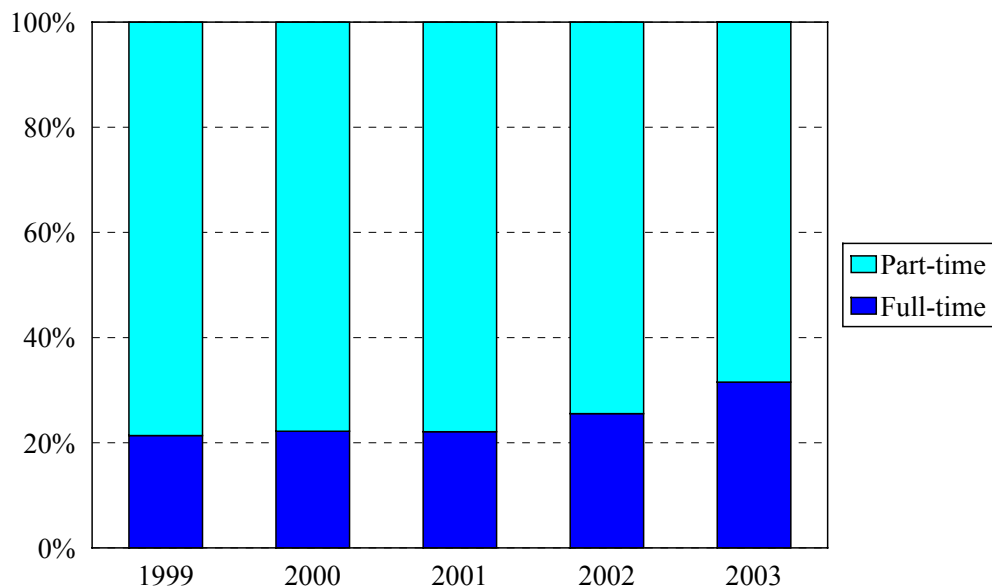
College of Nursing Enrollment Fall 1999 to Fall 2003



Award	Program	Code	Year				
			1999	2000	2001	2002	2003
BS	Accelerated Nursing	1143					29
BS	RN Completion	192	192	184	159	133	187
	Non-matriculated undergraduate	000	2	1	4	0	3
	<i>Total Undergraduates</i>		<i>194</i>	<i>185</i>	<i>163</i>	<i>133</i>	<i>219</i>
CAS	Family Nurse Practitioner	920	9	4	5	4	2
CAS	Women's Nurse Practitioner	930			1	1	
MS	Clinical Nurse Specialist	900		1			
MS	Clinical Nurse Spec. Adult	901	21	24	16	11	7
MS	Clinical Nurse Spec. HRMI	902	5	2	2	2	6
MS	Family Nurse Practitioner	921	78	63	63	60	70
MS	Nurse Anesthesia: KCH	940	30	38	34	35	44
MS	Nurse Anesthesia: Harlem	941	9	15	24	30	37
MS	Nurse Midwifery Completion	950	2	2		1	1
MS	Nurse Midwifery	966	14	11	13	10	8
MS	Women's Nurse Practitioner	931	7	10	7	5	8
	Non-matriculated	999	5	10	16	33	23
	<i>Total Graduate</i>		<i>180</i>	<i>180</i>	<i>181</i>	<i>192</i>	<i>206</i>
	Total		351	374	365	344	425
	Change from previous year		7%	-2%	-6%	-6%	24%

College of Nursing totals reflect the deactivation of the Generic Nursing program, beginning in 1997.

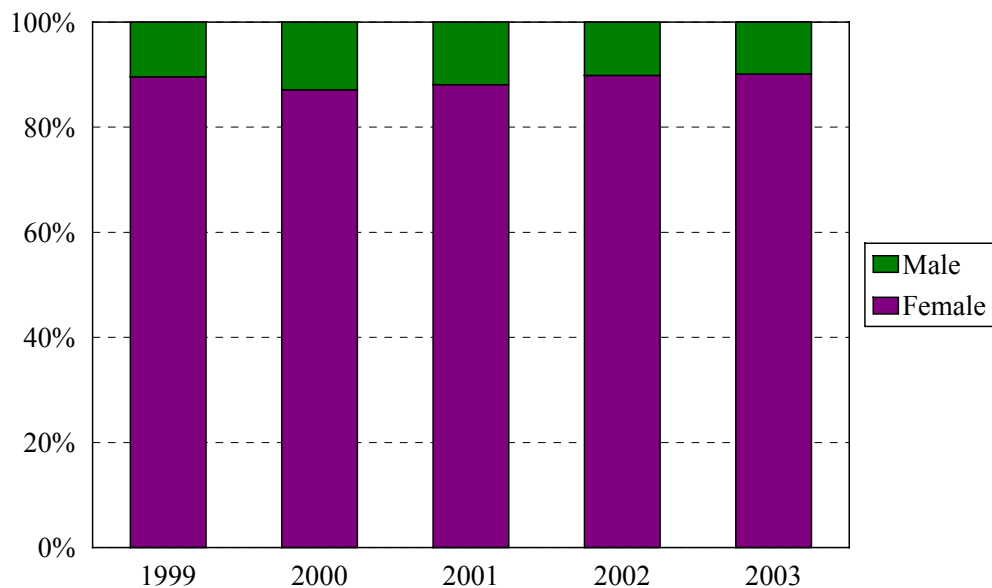
College of Nursing Enrollment by Full- and Part-time Status Fall 1999 to Fall 2003



Program	Code	Year								
		1999			2000			2001		
		FT	PT	%FT	FT	PT	%FT	FT	PT	%FT
RN Completion BS	192	19	173	10%	35	149	19%	20	139	13%
Non-matriculated undergraduate	000	0	2	0%	0	1	0%	0	4	0%
<i>Total Undergraduates</i>		19	175	10%	35	150	19%	20	143	12%
Family Nurse Practitioner CAS	920	1	8	11%	0	4	0%	0	5	0%
Women's Nurse Practitioner CAS	930							0	1	0%
Clinical Nurse Specialist MS	900				0	1	0%			
Clinical Nurse Spec. Adult MS	901	0	21	0%	0	24	0%	0	16	0%
Clinical Nurse Spec. HRMI MS	902	0	5	0%	0	2	0%	1	1	50%
Family Nurse Practitioner MS	921	18	60	23%	9	54	14%	10	53	16%
Nurse Anesthesia MS: Kings	940	23	7	77%	18	20	47%	20	14	59%
Nurse Anesthesia MS: Harlem	941	9	0	100%	11	4	73%	16	8	67%
Nurse Midwifery Completion MS	950	1	1	50%	0	2	0%			
Nurse Midwifery: RN MS	966	9	5	64%	8	3	73%	9	4	69%
Women's Nurse Practitioner MS	931	0	7	0%	0	10	0%	0	7	0%
Non-matriculated graduate	999	0	5	0%	0	10	0%	0	16	0%
<i>Total Graduate</i>		61	119	34%	46	134	26%	56	125	31%
Total		80	294	21%	81	284	22%	76	268	22%
Change from previous year				-10%			-1%			0%

Program	Code	Year					
		2002			2003		
		FT	PT	%FT	FT	PT	%FT
Accelerated Nursing	1143				29	0	100%
RN Completion BS	192	31	102	23%	45	142	24%
Non-matriculated	000				0	3	0%
<i>Total Undergraduates</i>		<i>31</i>	<i>102</i>	<i>23%</i>	<i>74</i>	<i>145</i>	<i>34%</i>
Family Nurse Practitioner CAS	920	0	4	0%	0	2	0%
Women's Nurse Practitioner CAS	930	0	1	0%			
Clinical Nurse Specialist MS	900						
Clinical Nurse Spec. Adult MS	901	3	8	27%	1	6	14%
Clinical Nurse Spec. HRMI MS	902	0	2	0%	1	5	17%
Family Nurse Practitioner MS	921	6	54	10%	11	59	16%
Nurse Anesthesia MS: Kings	940	18	17	51%	20	24	45%
Nurse Anesthesia MS: Harlem	941	16	14	53%	22	15	59%
Nurse Midwifery Completion MS	950	0	1	0%	0	1	0%
Nurse Midwifery: RN MS	966	7	3	70%	5	3	63%
Women's Nurse Practitioner MS	931	1	4	20%	0	8	0%
Non-matriculated	999	1	32	3%	0	23	0%
<i>Total Graduate</i>		<i>52</i>	<i>140</i>	<i>27%</i>	<i>60</i>	<i>146</i>	<i>29%</i>
Total		83	242	26%	134	290	32%
Change from previous year				4%			6%

College of Nursing Enrollment by Gender Fall 1999 to Fall 2003



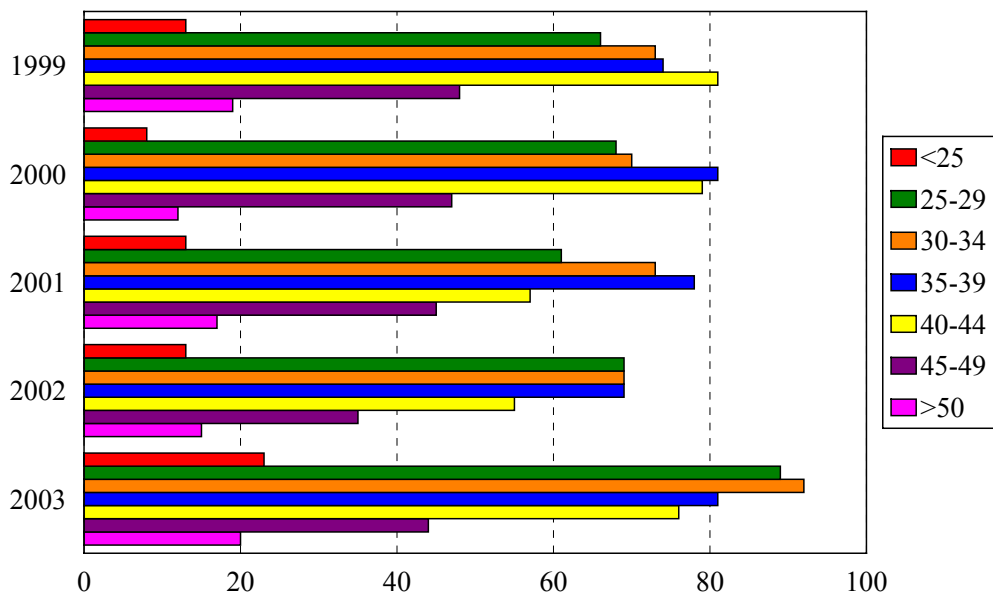
Gender	Year				
	1999	2000	2001	2002	2003
Female	335	318	303	292	383
Male	39	47	41	33	42
% Female	90%	87%	88%	90%	90%
Total	374	365	344	325	425

ENROLLMENT BY GENDER
COLLEGE OF NURSING

Program	Code	1999		2000		2001		2002		2003	
		F	M	F	M	F	M	F	M	F	M
Accelerated Nursing BS	1143									23	6
RN Completion BS	192	181	11	173	11	149	10	123	10	174	13
Non-matriculated	000	2	0	1	0	3	1			3	0
<i>Total Undergraduates</i>		<i>183</i>	<i>11</i>	<i>174</i>	<i>11</i>	<i>152</i>	<i>11</i>	<i>123</i>	<i>10</i>	<i>200</i>	<i>19</i>
Family Nurse Practitioner CAS	920	9	0	4	0	5	0	4	0	2	0
Women's Nurse Practitioner CAS	930					1	0	1	0		
Clinical Nurse Specialist MS	900			1	0						
Clinical Nurse Spec. Adult MS	901	21	0	23	1	15	1	10	1	7	0
Clinical Nurse Spec. HRMI MS	902	5	0	2	0	2	0	2	0	6	0
Family Nurse Practitioner MS	921	69	9	55	8	57	6	56	4	68	2
Nurse Anesthesia MS	940	15	15	19	19	23	11	29	6	37	7
	941	5	4	9	6	12	12	20	10	24	13
Nurse Midwifery Completion MS	950	2	0	2	0			1	0	1	0
Nurse Midwifery: RN MS	966	14	0	11	0	13	0	10	0	8	0
Women's Nurse Practitioner MS	931	7	0	10	0	7	0	5	0	8	0
Non-matriculated	999	5	0	8	2	16	0	31	2	22	1
<i>Total Graduate</i>		<i>152</i>	<i>28</i>	<i>144</i>	<i>36</i>	<i>151</i>	<i>30</i>	<i>169</i>	<i>23</i>	<i>189</i>	<i>23</i>
Total		335	39	318	47	303	41	292	33	383	42
Change from previous year		8%	-3%	-5%	21%	-5%	-13%	-4%	-20%	31%	27%

College of Nursing Enrollment by Age Level

Fall 1999 to Fall 2003

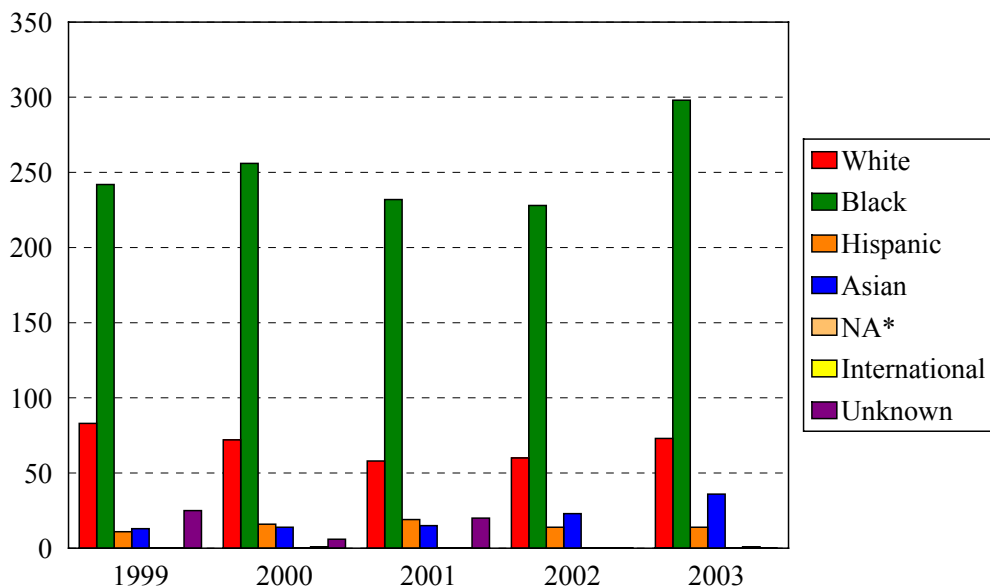


Age	Year									
	1999		2000		2001		2002		2003	
	N	%	N	%	N	%	N	%	N	%
Under 25	13	3%	8	2%	13	4%	13	4%	23	5%
25-29	66	18%	68	19%	61	17%	69	17%	89	21%
30-34	73	20%	70	19%	73	20%	69	20%	92	22%
35-39	74	20%	81	22%	78	21%	69	21%	81	19%
40-44	81	22%	79	22%	57	16%	55	16%	76	18%
45-49	48	13%	47	13%	45	12%	35	12%	44	10%
50 and over	19	5%	12	3%	17	5%	15	5%	20	5%
Age range	22-62		22-60		21-58		21-59		21-55	
Median age	37		37		36		36		35	
Total	374		365		344		325		425	

MEDIAN AGE BY PROGRAM
COLLEGE OF NURSING

Award	Program	Code	Median Age				
			1999	2000	2001	2002	2003
BS	Accelerated Nursing BS	1143					30.0
BS	RN Completion BS	192	36.5	31.0	36.0	35.0	36.0
	Non-matriculated	000	34.0	37.0	29.0		34.0
	<i>Total Undergraduate</i>		<i>36.5</i>	<i>37.0</i>	<i>39.0</i>	<i>35.0</i>	<i>35.0</i>
CAS	Family Nurse Practitioner	920	41.0	45.0	48.0		50.0
CAS	Women's Nurse Practitioner	930			53.0		
MS	Clinical Nurse Specialist	900		45.0			
MS	Clinical Nurse Spec. Adult	901	41.0	41.5	37.0	39.0	40.0
MS	Clinical Nurse Spec. HRMI	902	41.0	35.5	32.5	41.0	41.0
MS	Family Nurse Practitioner	921	40.0	41.0	36.0	36.5	38.0
MS	Nurse Anesthesia : KCH	940	34.0	32.5	34.5	33.0	32.0
MS	Nurse Anesthesia: Harlem	941	33.0	34.0	36.5	34.0	34.0
MS	Nurse Midwifery Completion	950	38.5	36.5		44.0	45.0
MS	Nurse Midwifery: RN	966	28.0	27.0	32.0	31.0	31.0
MS	Women's Nurse Practitioner	931	45.0	42.5	41.0	43.0	32.0
	Non-matriculated	999	47.0	34.0	39.5	34.0	31.0
	<i>Total Graduate</i>		<i>37.0</i>	<i>37.0</i>	<i>37.0</i>	<i>36.0</i>	<i>35.0</i>
	Total		37.0	37.0	36.0	36.0	35.0
	Change from previous year		0	0	-1	0	-1

College of Nursing Enrollment by Ethnic Group Fall 1999 to Fall 2003



*Native American

Ethnic Group (IPEDS Categories)	Year									
	1999		2000		2001		2002		2003	
	N	%	N	%	N	%	N	%	N	%
White	83	22%	72	20%	58	17%	60	18%	76	18%
Black	242	65%	256	70%	232	67%	228	70%	298	70%
Hispanic	11	3%	16	4%	19	6%	14	4%	14	3%
Asian/Pacific Islander	13	3%	14	4%	15	4%	23	7%	36	8%
Native American										
International			1	<1%					1	<1%
Unknown	25	7%	6	2%	20	6%				
% Black and Hispanic		68%		74%		73%		74%		73%
Total	374		365		344		325		425	

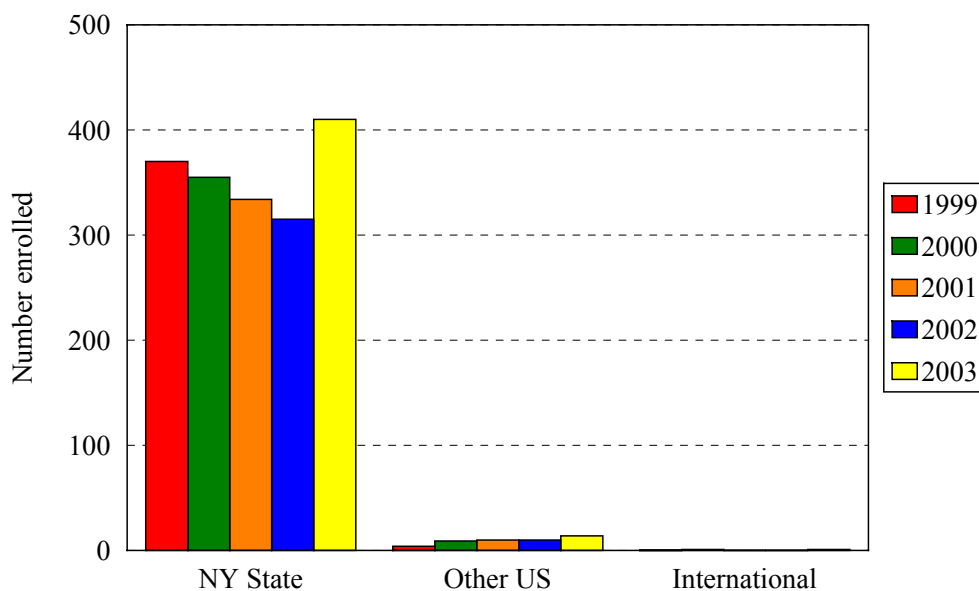
- The Integrated Postsecondary Education Data Set (IPEDS) ethnic categories are those used by the U.S. Department of Education.

ENROLLMENT BY ETHNIC GROUP BY PROGRAM
COLLEGE OF NURSING

Program	White	Black	Hispanic	Asian	Unknown	White	Black	Hispanic	Asian	International	Unknown	White	Black	Hispanic	Asian	International	Unknown
	1999					2000						2001					
192	45	126	4	5	12	35	135	5	5	1	3	28	109	8	4	0	10
000		1	1				1						3		1		
<i>Total Und.</i>	45	127	5	5	12	35	136	5	5	1	3	28	112	8	5	0	10
920		9				2	1	1					3				2
930														1			
900							1										
901	3	16		1	1	5	18		1			2	12	1	1		
902	2	2			1	1					1		2				
921	12	54	3	2	7	8	51	2	2			10	45	5	1		2
940	8	16	2	4	0	10	20	4	3		1	8	21	2	3		
941		7			2	1	11	1	2			1	15	1	5		2
950	1		1				1	1									
966	10	3			1	5	6					3	8				2
931	1	6				2	8					1	6				
999	1	2		1	1	3	3	2	1		1	5	8	1			2
<i>Total Grad.</i>	38	115	6	8	13	37	120	11	9	0	3	30	120	11	10	0	10
Total	83	242	11	13	25	72	256	16	14	1	6	58	232	19	15	0	20

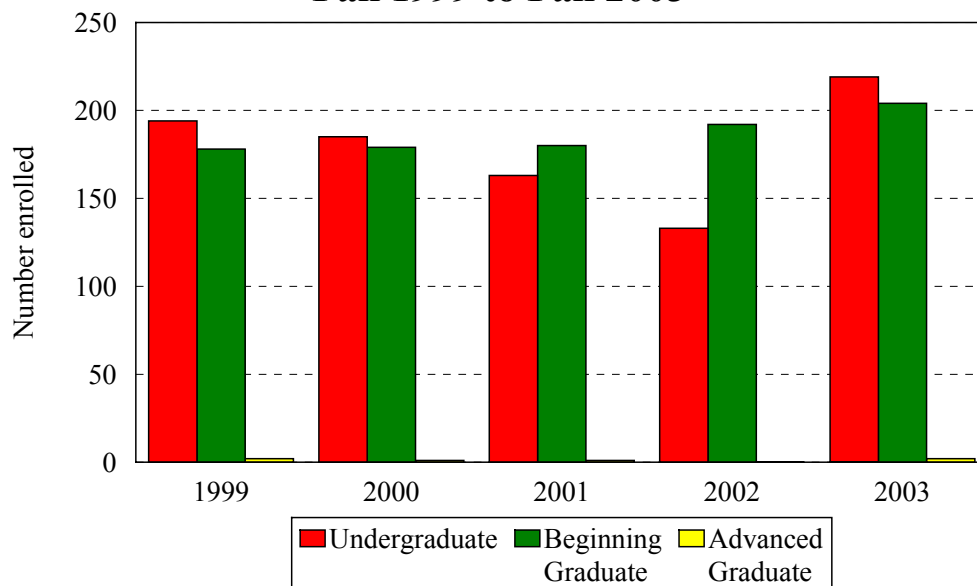
Program	White	Black	Hispanic	Asian	International	Unknown	White	Black	Hispanic	Asian	International	Unknown
	2002						2003					
291							6	22		1		
192	20	107	5	1			25	149	5	7	1	
000							1	2				
<i>Total Und.</i>	20	107	5	1			32	173	5	8	1	
920	2	2					1	1				
930		1										
900												
901	2	8	1					6	1			
902		2						5		1		
921	13	39	5	3			13	49	6	2		
940	7	21	2	5			16	20	2	6		
941	4	14	1	11			7	14		16		
950				1						1		
966	3	7					3	5				
931	1	4					1	6		1		
999	8	23		2			3	19		1		
<i>Total Grad.</i>	40	121	9	22	0	0	44	125	9	28		
Total	60	228	14	23	0	0	76	298	14	36	1	

College of Nursing Enrollment by Permanent Residence Fall 1999 to Fall 2003



Residency	Year									
	1999		2000		2001		2002		2003	
	N	% of total	N	% of total	N	% of total	N	% of total	N	% of total
New York State	370	99%	355	97%	334	97%	315	97%	410	96%
New York City	330	88%	281	77%	298	87%	268	82%	337	79%
Bronx	8	2%	9	2%	13	4%	16	5%	18	4%
Kings (Brooklyn)	238	64%	195	53%	198	58%	176	54%	223	52%
Manhattan	9	2%	6	2%	11	3%	12	4%	18	4%
Queens	66	18%	65	18%	71	21%	59	18%	76	18%
Richmond (Staten I.)	9	2%	6	2%	5	1%	5	2%	2	0%
Other U.S.	4	1%	9	2%	10	3%	10	3%	14	3%
International			1	<1%					1	<1%
Total	374		365		344		325		425	

College of Nursing Enrollment by Student Level Fall 1999 to Fall 2003



Note: Beginning graduates include MS degree students and CAS students with few than 24 credits; advanced graduate students include only CAS students with more than 23 credits.

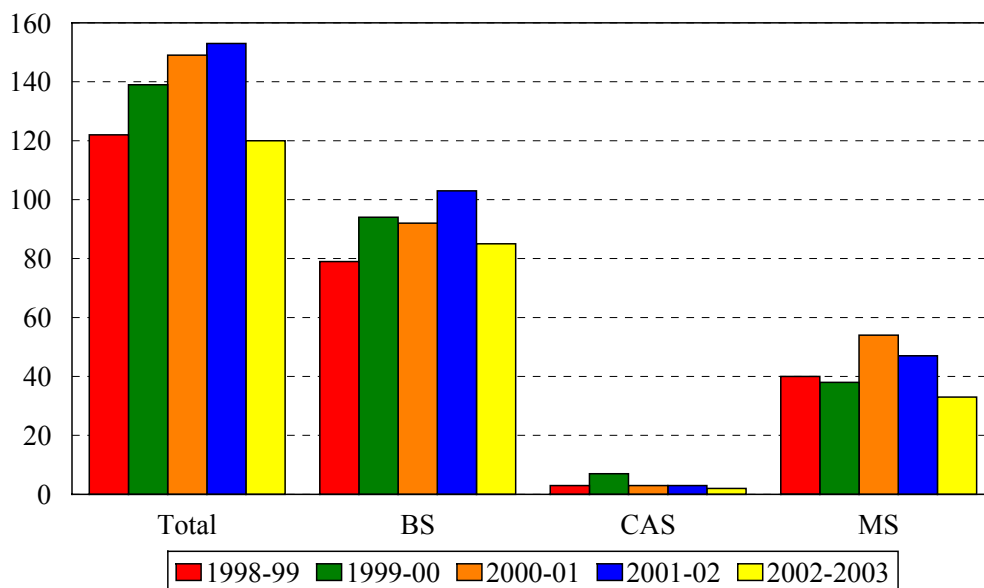
Student Level	Year									
	1999		2000		2001		2002		2003	
	N	%	N	%	N	%	N	%	N	%
Undergraduate	194	52%	185	51%	163	47%	133	47%	219	51%
Beginning Graduate	178	48%	179	48%	180	52%	192	52%	204	48%
Advanced Graduate	2	1%	1	<1%	1	0%	0	0%	2	<1%
Total	374		365		344		325		425	

ENROLLMENT BY STUDENT LEVEL
COLLEGE OF NURSING

Program	Code	1999			2000		
		Undergraduates	Beginning Graduates	Advanced Graduates	Undergraduates	Beginning Graduates	Advanced Graduates
Accelerated Nursing BS	1143						
RN Completion BS	192	192			184		
Non-matriculated undergrad	000	2			1		
Family Nurse Practitioner CAS	920		7	2		3	1
Women's Nurse Practitioner CAS	930						
Clinical Nurse Specialist MS	900					1	
Clinical Nurse Spec. Adult MS	901		21			24	
Clinical Nurse Spec. HRMI MS	902		5			2	
Family Nurse Practitioner MS	921		78			63	
Nurse Anesthesia MS: Kings	940		30			38	
Nurse Anesthesia MS: Harlem	941		9			15	
Nurse Midwifery Completion MS	950		2			2	
Nurse Midwifery: RN MS	966		14			11	
Women's Nurse Practitioner MS	931		7			10	
Non-matriculated	999		5			10	
Total		194	178	2	185	179	1
Change from previous year		11%	2%		-5%	1%	

Program	Code	2001			2002			2003		
		Undergraduates	Beginning Graduates	Advanced Graduates	Undergraduates	Beginning Graduates	Advanced Graduates	Undergraduates	Beginning Graduates	Advanced Graduates
Accelerated Nursing BS	1143							29		
RN Completion BS	192	159			133			187		
Non-matriculated undergrad	999	4						3		
Family Nurse Practitioner CAS	920		5			4				2
Women's Nurse Practitioner CAS	930			1		1				
Clinical Nurse Specialist MS	900									
Clinical Nurse Spec. Adult MS	901		16			11			7	
Clinical Nurse Spec. HRMI MS	902		2			2			6	
Family Nurse Practitioner MS	921		63			60			70	
Nurse Anesthesia MS: Kings	940		34			35			44	
Nurse Anesthesia MS: Harlem	941		24			30			37	
Nurse Midwifery Completion MS	950					1			1	
Nurse Midwifery: RN MS	966		13			10			8	
Women's Nurse Practitioner MS	931		7			5			8	
Non-matriculated grad	999		16			33			23	
Total		163	180	1	133	192	0	219	204	2
Change from previous year		-12%	1%		-18%	7%	-100%	65%	6%	

Degrees Granted by Level College of Nursing 1998-1999 to 2002-2003



Degrees	Code	Year				
		1998-99	1999-00	2000-01	2001-02	2002-03
Generic-Nursing BS	291					
RN Completion BS	192	79	94	92	103	85
Family Nurse Practitioner CAS	920	3	7	3	2	1
Women's Nurse Practitioner CAS	930		1			1
Clinical Nurse Specialist MS	900				1	
Clinical Nurse Spec. Adult MS	901	14	4	8	5	5
Clinical Nurse Spec. HRMI MS	902	6	3			
Family Nurse Practitioner MS	921	10	20	22	16	13
Nurse Anesthesia MS: Harlem	941					2
Nurse Anesthesia MS: Kings	940	5	5	16	8	10
Nurse Midwifery Completion MS	950	2	2	2	8	
Nurse Midwifery: RN MS	966		3	5	8	3
Women's Nurse Practitioner MS	931	3	1	1	2	
Total		122	139	149	153	120
Change from previous year		-8%	14%	7%	3%	-22%

DEGREES EARNED BY ETHNIC GROUP
COLLEGE OF NURSING

Ethnic Group	Year				
	1998-99	1999-00	2000-01	2001-02	2002-03
White	30	35	28	26	18
% change	0%	17%	-20%	-7%	-31%
Black	85	92	108	115	88
% change	-10%	8%	17%	6%	-23%
Hispanic	4	3	5	5	5
% change	100%	-25%	67%	0%	0%
Asian	3	4	4	4	4
% change	-40%	33%	0%	0%	0%
Native American	0	0	0		
% change					
International	0	0	0		
% change					
Unknown	0	5	4	3	5
% change					
Total	122	139	149	153	120
Change from previous year	-8%	14%	7%	3%	-22%