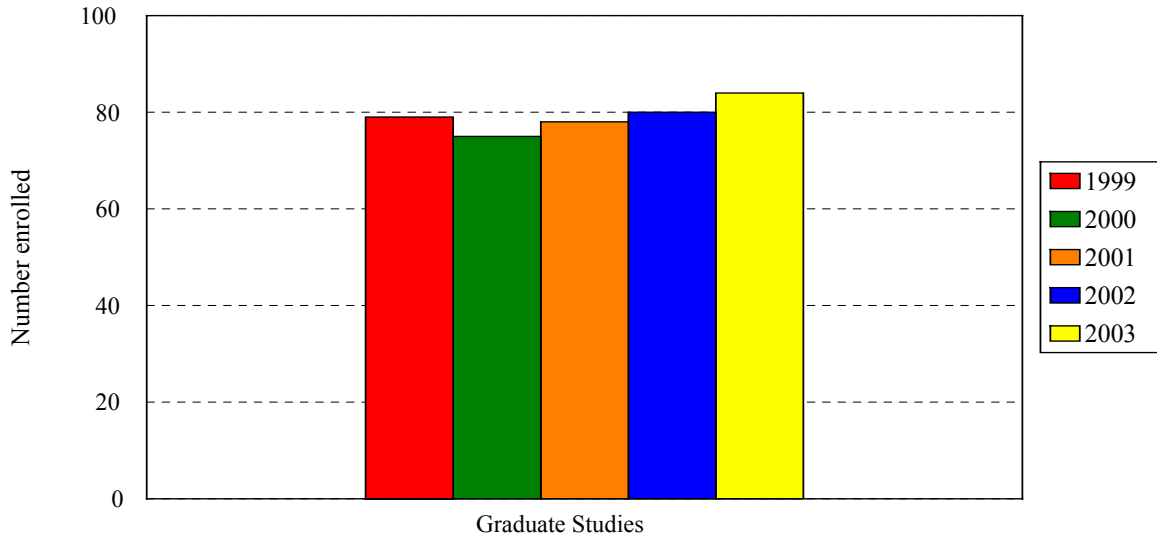


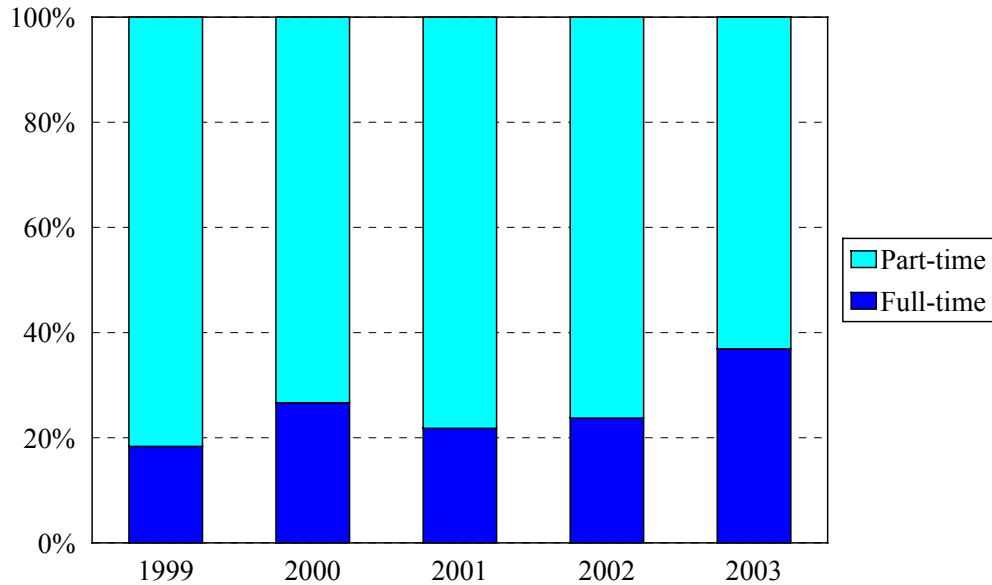
School of Graduate Studies Enrollment Fall 1999 to Fall 2003



School	Year				
	1999	2000	2001	2002	2003
Graduate Studies	79	75	78	80	84
Change from previous year	8%	-5%	4%	3%	5%

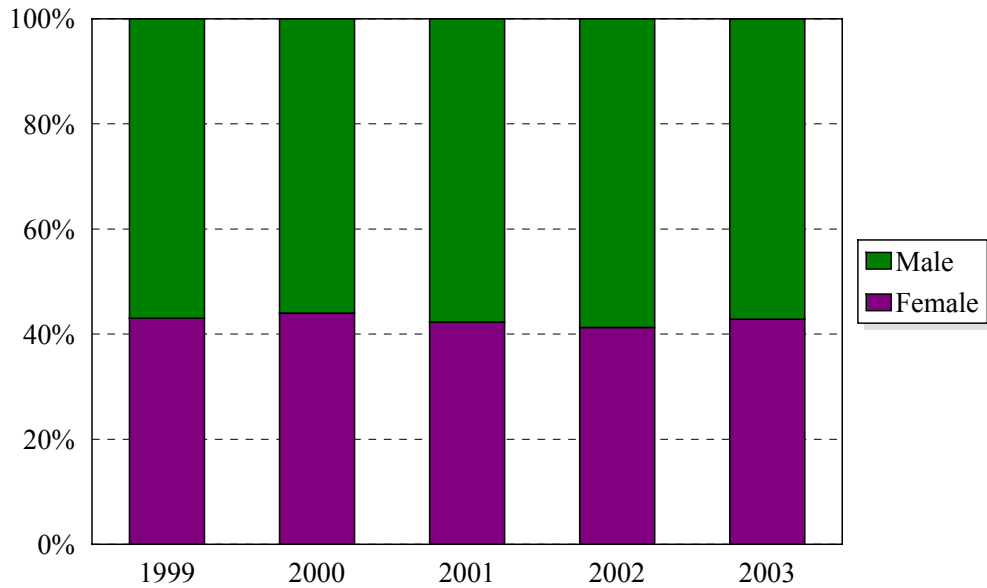
School of Graduate Studies Enrollment by Full- and Part-time Status

Fall 1999 to Fall 2003



Enrollment Levels	Year				
	1999	2000	2001	2002	2003
Full-time	16	20	17	19	31
Part-time	63	55	61	61	53
% Full-time	20%	27%	22%	24%	37%
Total	79	75	78	80	84

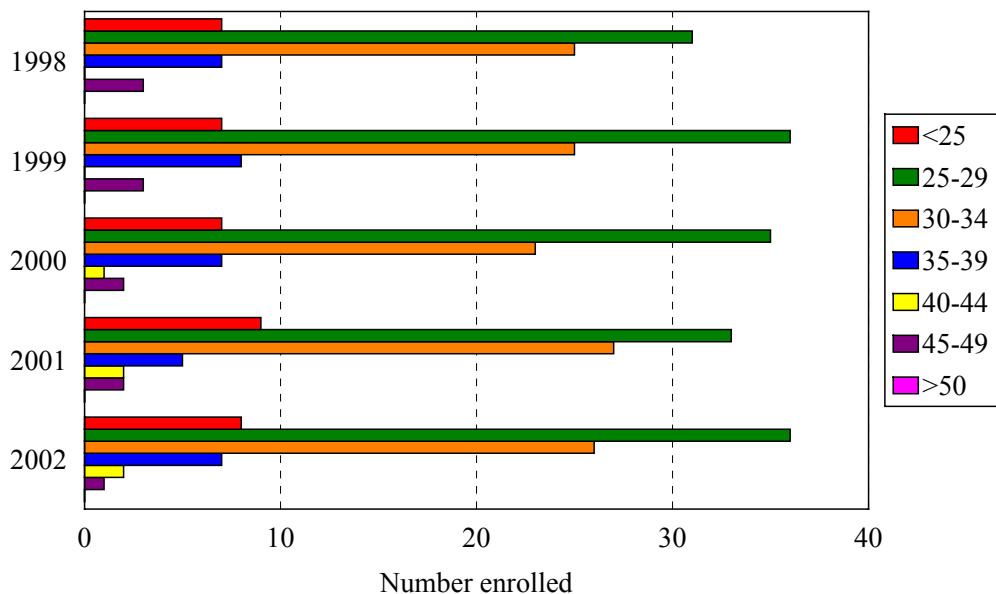
School of Graduates Studies Enrollment by Gender Fall 1999 to Fall 2003



Gender	Year				
	1999	2000	2001	2002	2003
Female	34	33	33	33	36
Male	45	42	45	47	48
% Female	43%	44%	42%	41%	43%
Total	79	75	78	80	84

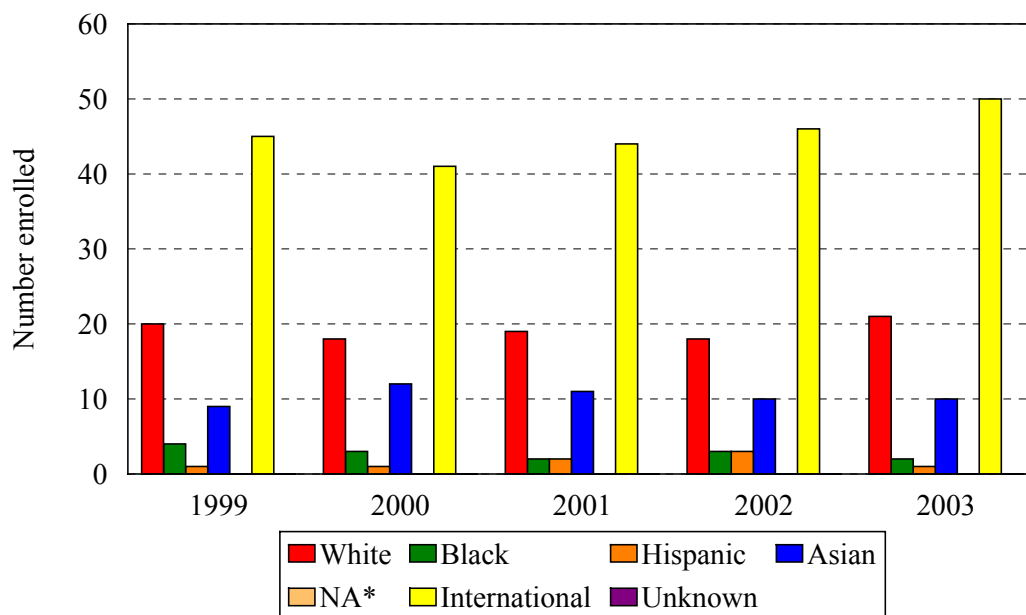
School of Graduate Studies Enrollment by Age Level

Fall 1999 to Fall 2003



Age	Year									
	1999		2000		2001		2002		2003	
	N	%	N	%	N	%	N	%	N	%
Under 25	7	9%	7	9%	9	12%	8	10%	8	10%
25-29	36	46%	35	47%	33	42%	36	45%	32	38%
30-34	25	32%	23	31%	27	35%	26	33%	35	42%
35-39	8	10%	7	9%	5	6%	7	9%	7	8%
40-44	0	0%	1	1%	2	3%	2	3%	1	1%
45-49	3	4%	2	3%	2	3%	1	1%	1	1%
50 and over	0	0%	0	0%	0	0%	0	0%	0	0%
Median age	28		29		29		29		30	
Age range	22-47		22-47		22-48		23-48		21-49	
Total	79		75		78		80		84	

School of Graduate Studies Enrollment by Ethnic Group Fall 1999 to Fall 2003



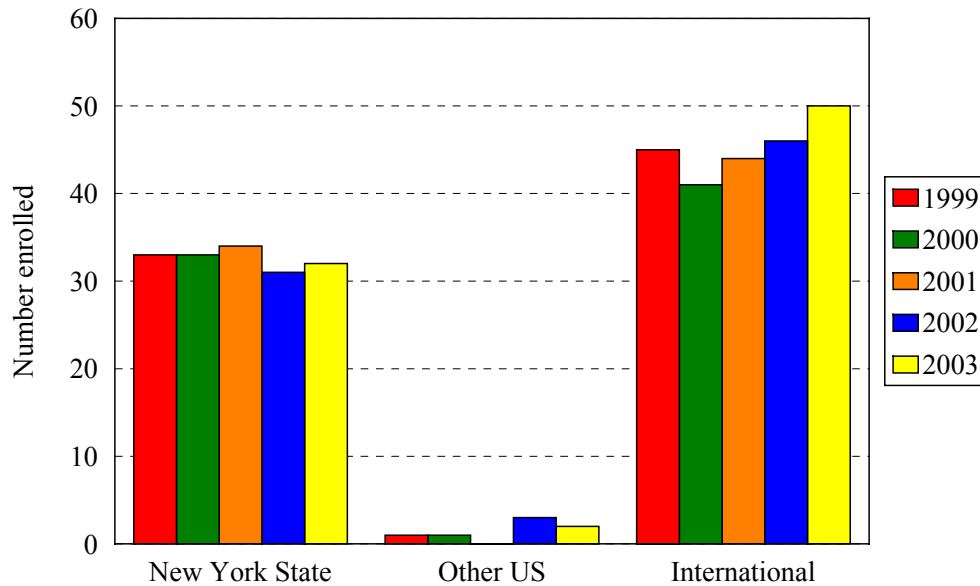
*Native American

Ethnic Group (IPEDS Categories)	Year									
	1999		2000		2001		2002		2003	
	N	%	N	%	N	%	N	%	N	%
White	20	25%	18	24%	19	24%	18	23%	21	25%
Black	4	5%	3	4%	2	3%	3	4%	2	2%
Hispanic	1	1%	1	1%	2	3%	3	4%	1	1%
Asian/Pacific Islander	9	11%	12	16%	11	14%	10	13%	10	12%
Native American	0	0%	0	0%	0	0%	0	0%	0	0%
International	45	57%	41	55%	44	56%	46	58%	50	60%
Unknown	0	0%	0	0%	0	0%	0	0%	0	0%
<i>% Black and Hispanic</i>		6%		5%		5%		8%		4%
Total	79		75		78		80		84	

- The Integrated Postsecondary Education Data Set (IPEDS) ethnic categories are those used by the U.S. Department of Education.

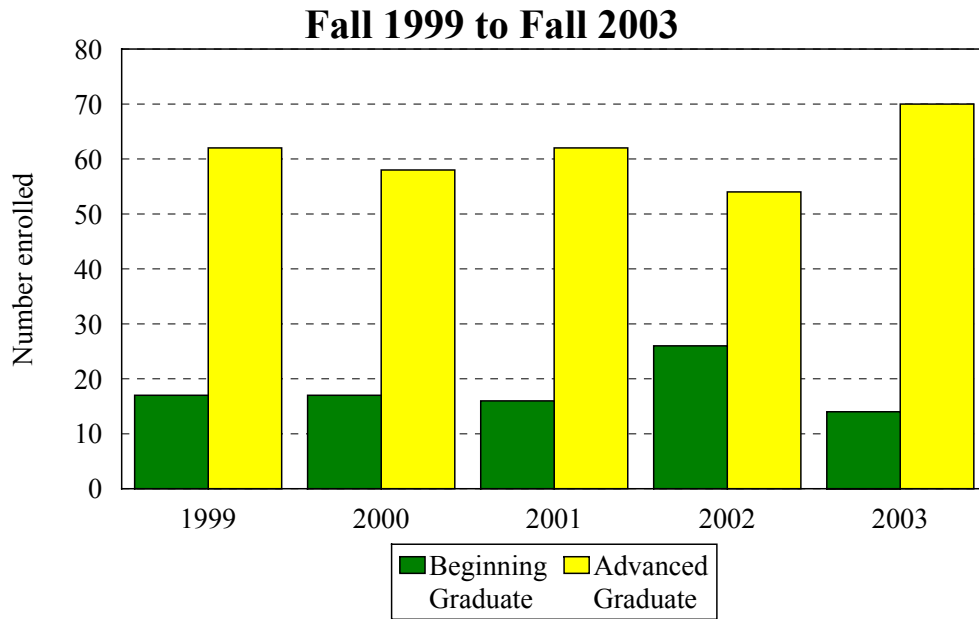
School of Graduate Studies Enrollment by Permanent Residence

Fall 1999 to Fall 2003



Residency	Year									
	1999		2000		2001		2002		2003	
	N	% of total	N	% of total	N	% of total	N	% of total	N	% of total
New York State	33	42%	33	44%	34	44%	31	39%	32	38%
New York City	26	33%	26	35%	25	32%	24	30%	26	31%
Bronx	1	1%	1	1%	1	1%	2	3%	1	1%
Kings (Brooklyn)	14	18%	12	16%	13	17%	13	16%	17	20%
Manhattan	3	4%	4	5%	3	4%	3	4%	1	1%
Queens	6	8%	7	9%	6	8%	6	8%	7	8%
Richmond (Staten I.)	2	3%	2	3%	2	3%	0	0%	0	0%
Other U.S.	1	1%	1	1%	0	0%	3	4%	2	2%
International	45	57%	41	55%	44	56%	46	58%	50	60%
Total	79		75		78		80		84	

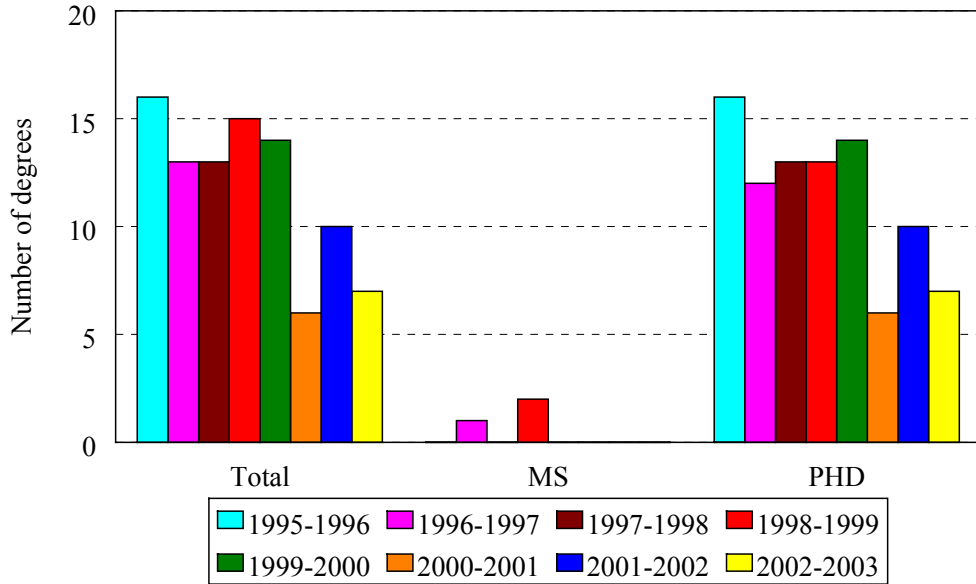
School of Graduate Studies Enrollment by Student Level



Note: Beginning graduates are Ph.D. students who have completed 0-23 graduate credits; advanced graduates, 24 or more.

Age	Year									
	1999		2000		2001		2002		2003	
	N	%	N	%	N	%	N	%	N	%
Beginning Graduate	11	15%	17	22%	17	23%	16	21%	26	33%
Advanced Graduate	62	85%	62	78%	58	77%	62	79%	54	67%
Total	73	100%	79	100%	75	100%	78	100%	80	100%

School of Graduate Studies Degrees Granted 1995-1996 to 2002-2003



	Year							
	1995-1996	1996-1997	1997-1998	1998-1999	1999-2000	2000-2001	2001-2002	2002-2003
Master of Science	0	1	0	2	0	0	0	0
Biochemistry				1				
Microbiology				1				
Neural and Behavioral Science		1						
Doctor of Philosophy	16	12	13	13	14	6	10	7
Anatomy & Cell Biology	8	3	2	4	2	1	3	1
Biochemistry	3	3	2	1	2	1	3	
Microbiology & Immunology	2	3	3	4	3	1	2	
Molecular and Cell Biology								2
Neural and Behavioral Science	3	2	1		3	2	2	2
Pathology								
Pharmacology		1	3	1		1		2
Physiology			2	3	4			
Total	16	13	13	15	14	6	10	7