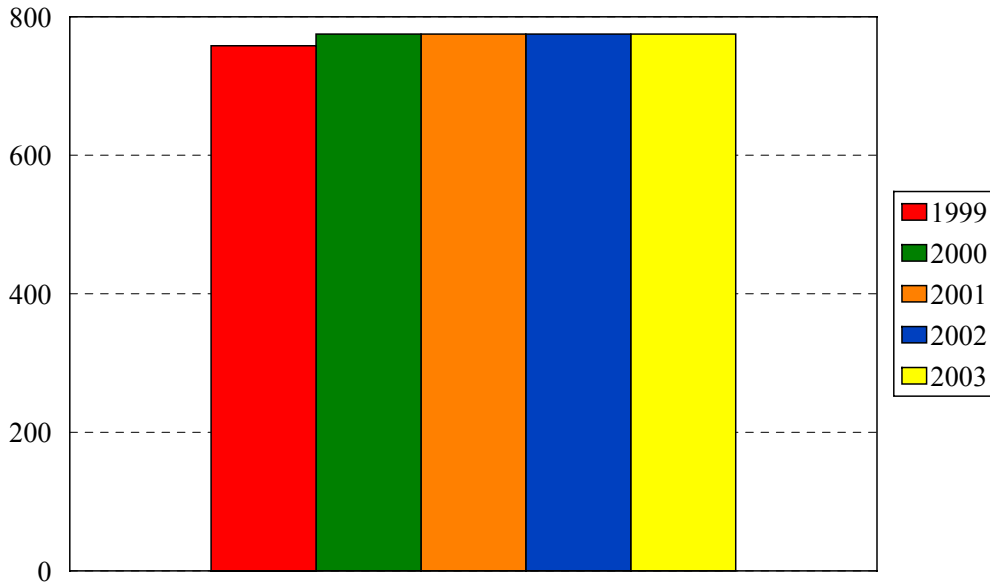


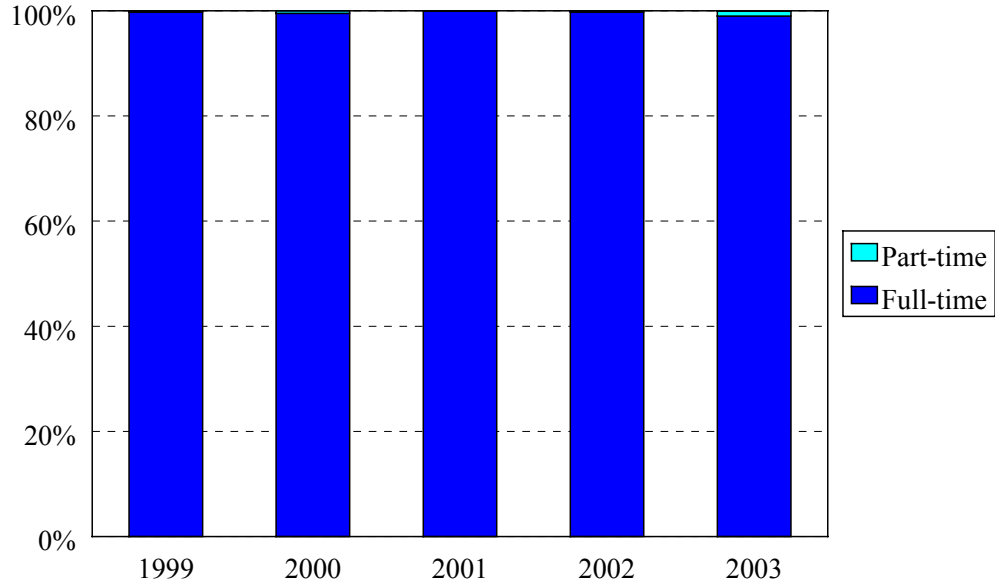
**College of Medicine Enrollment**  
**MD and MD/MPH**  
 Fall 1999 to Fall 2003



College of Medicine MD and MD/MPH	Year				
	1999	2000	2001	2002	2003
New students	189	183	188	184	180
Continuing students	569	592	587	592	595
<b>All Students</b>	<b>758</b>	<b>775</b>	<b>775</b>	<b>775</b>	<b>775</b>
Change from previous year	0%	2%	0%	0%	0%

- College of Medicine MD Program totals reflect a planned reduction in entering class size to 180 beginning in 1997 and a planned increase beginning in 2000.
- The total in 2002 includes 6 students concurrently enrolled in the MPH Program, and the total in 2003, 10 students.

**College of Medicine: MD and MD/MPH  
Enrollment by Full- and Part-time Status  
Fall 1999 to Fall 2003**



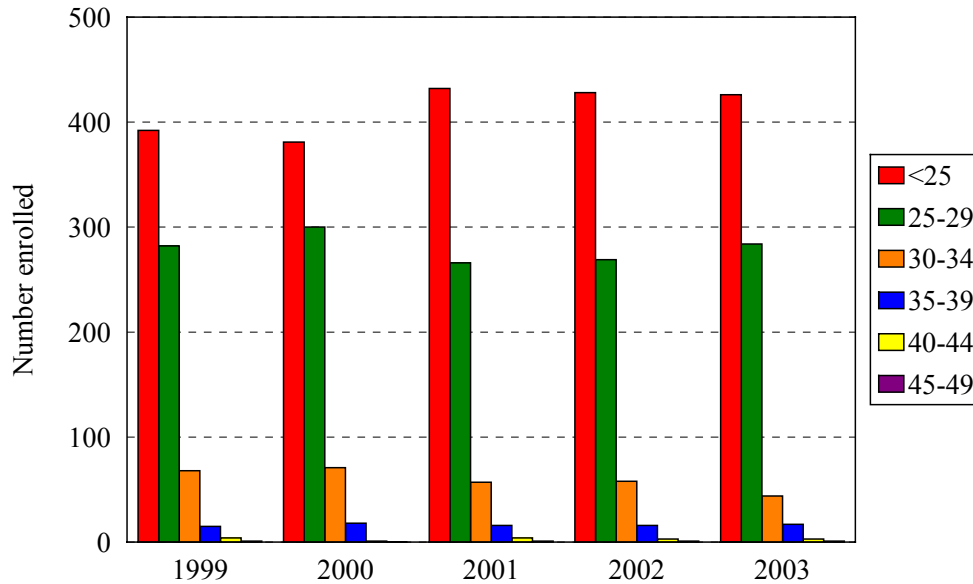
Enrollment Levels	Year				
	1999	2000	2001	2002	2003
Full-time	756	771	775	773	767
Part-time	2	4	0	2	8
% Full-time	99+%	99+%	100%	99+%	99%
<b>Total</b>	<b>758</b>	<b>775</b>	<b>775</b>	<b>775</b>	<b>775</b>

**College of Medicine: MD and MD/MPH  
Enrollment by Gender  
Fall 1999 to Fall 2003**



Gender	Year			Year			Year			Year			Year		
	1999			2000			2001			2002			2003		
	F	M	%F	F	M	%F	F	M	%F	F	M	%F	F	M	%F
New 1 <sup>st</sup> year	91	98	48%	91	92	50%	92	96	49%	80	104	44%	88	92	49%
Continuing	259	310	46%	281	311	47%	296	291	50%	304	287	51%	296	299	50%
<b>All Students</b>	<b>350</b>	<b>408</b>	<b>46%</b>	<b>372</b>	<b>403</b>	<b>48%</b>	<b>388</b>	<b>387</b>	<b>50%</b>	<b>384</b>	<b>391</b>	<b>50%</b>	<b>384</b>	<b>391</b>	<b>50%</b>
Change from previous year			2%			2%			2%			0%			0%

**College of Medicine: MD and MD/MPH  
Enrollment by Age Level  
Fall 1999 to Fall 2003**



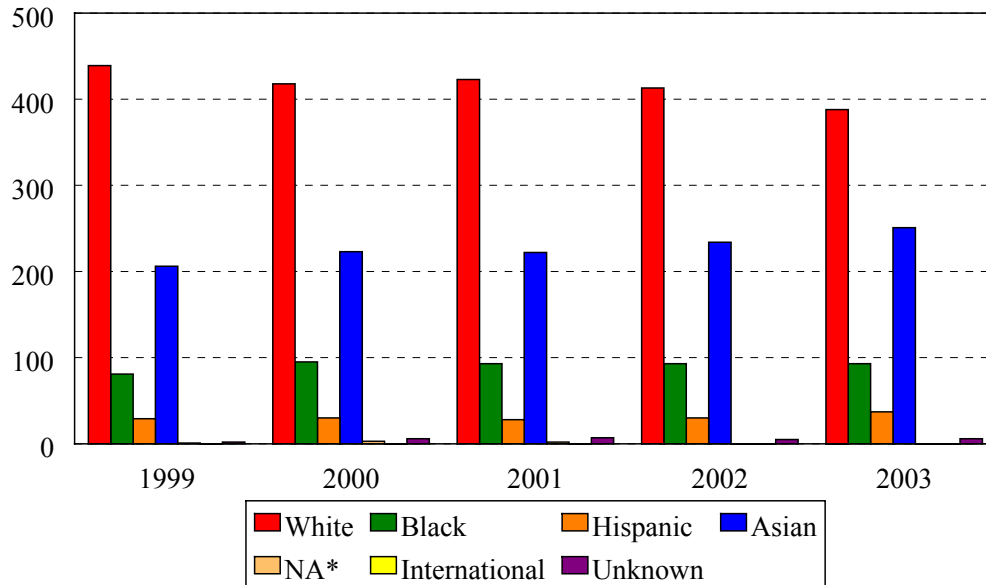
**All Medical Students**

Age	Year									
	1999		2000		2001		2002		2003	
	N	%	N	%	N	%	N	%	N	%
Under 25	392	52%	381	49	432	56%	428	55%	426	55%
25-29	282	37%	300	39	266	34%	269	35%	284	37%
30-34	68	9%	71	9	57	7%	58	7%	44	6%
35-39	15	2%	18	2	16	2%	16	2%	17	2%
40-44	1	<1%	4	1	4	1%	3	<1%	3	<1%
45-49	0	0%	1	<1	0	0%	1	<1%	1	<1%
50 and over	0	0%	0	0	0	0%				
<b>Median age</b>	<b>24</b>		<b>25</b>		<b>24</b>		<b>24</b>			<b>24</b>
<b>Age range</b>	<b>20-44</b>		<b>20-45</b>		<b>20-44</b>		<b>20-45</b>			<b>20-46</b>
<b>Total</b>	<b>758</b>		<b>775</b>		<b>775</b>		<b>775</b>			<b>775</b>

### New First Year Medical Students

Age	Year									
	1999		2000		2001		2002		2003	
	N	%	N	%	N	%	N	%	N	%
Under 25	134	71%	133	73%	147	78%	125	68%	148	82%
25-29	36	19%	36	20%	35	19%	47	26%	28	16%
30-34	15	8%	10	5%	4	2%	6	3%	2	1%
35-39	4	2%	2	1%	2	1%	5	3%	2	1%
40-44			2	1%			1	1%		
45-49										
50 and over										
<b>Median age</b>	<b>23</b>		<b>22</b>		<b>22</b>		<b>23</b>		<b>22</b>	
<b>Age range</b>	<b>20-38</b>		<b>20-44</b>		<b>20-35</b>		<b>20-40</b>		<b>20-36</b>	
<b>Total</b>	<b>189</b>		<b>183</b>		<b>188</b>		<b>184</b>		<b>180</b>	

## College of Medicine: MD and MD/MPH Enrollment by Ethnic Group Fall 1999 to Fall 2003



\*Native American students numbered 1 in 1999, 3 in 2000, 2 in 2001, 0 in 2002, and 0 in 2003.

### All Medical Students

Ethnic Group (IPEDS Categories)	Year									
	1999		2000		2001		2002		2003	
	N	%	N	%	N	%	N	%	N	%
White	443	58%	439	58%	418	54%	423	55%	413	53%
Black	82	11%	81	11%	95	12%	93	12%	93	12%
Hispanic	31	4%	29	4%	30	4%	28	4%	30	4%
Asian/Pacific Islander	198	26%	206	27%	223	29%	222	29%	234	30%
Native American	0	0%	1	<1%	3	0%	2	0%	0	0%
International	0	0%	0	0%	0	0%	0	0%	0	0%
Unknown	5	1%	2	<1%	6	1%	7	1%	5	1%
<i>Black and Hispanic</i>	<i>113</i>	<i>15%</i>	<i>110</i>	<i>15%</i>	<i>125</i>	<i>16%</i>	<i>121</i>	<i>16%</i>	<i>123</i>	<i>16%</i>
<b>Total</b>	<b>759</b>		<b>758</b>		<b>775</b>		<b>775</b>		<b>775</b>	

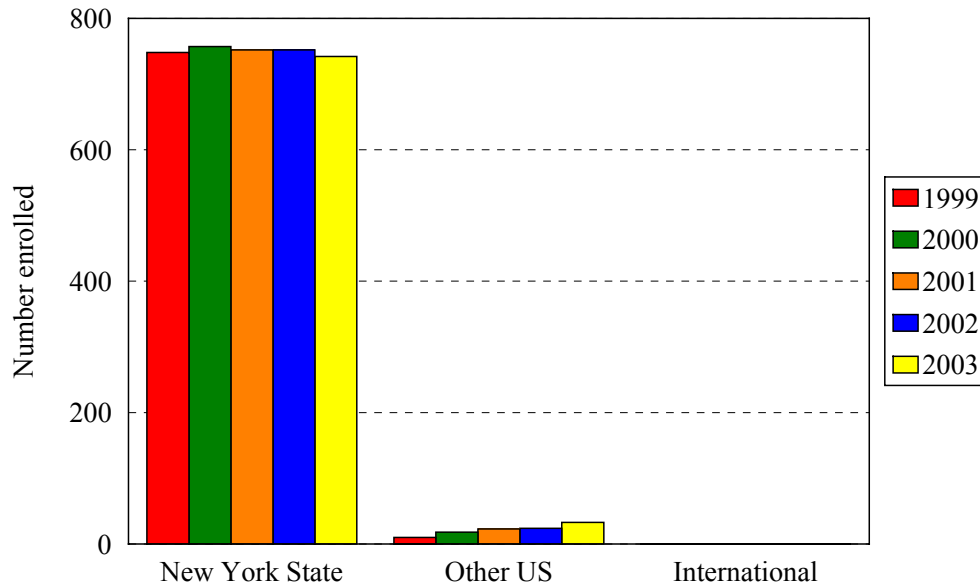
- The Integrated Postsecondary Education Data Set (IPEDS) ethnic categories are those used by the U.S. Department of Education.

### New First Year Medical Students

Ethnic Group (IPEDS Categories)	Year									
	1999		2000		2001		2002		2003	
	N	%	N	%	N	%	N	%	N	%
White	108	57%	92	50%	103	55%	96	52%	91	51%
Black	21	11%	25	14%	23	12%	19	10%	24	10%
Hispanic	6	3%	6	3%	3	2%	12	7%	13	7%
Asian/Pacific Islander	52	28%	56	31%	58	31%	56	30%	56	31%
Native American										
International										
Unknown	2	1%	4	2%	1	1%	1	1%	2	1%
<i>Black and Hispanic</i>	27	14%	31	17%	26	14%	31	17%	37	17%
<b>Total</b>	<b>189</b>		<b>183</b>		<b>188</b>		<b>184</b>		<b>180</b>	

## College of Medicine: MD and MD/MPH Enrollment by Permanent Residence

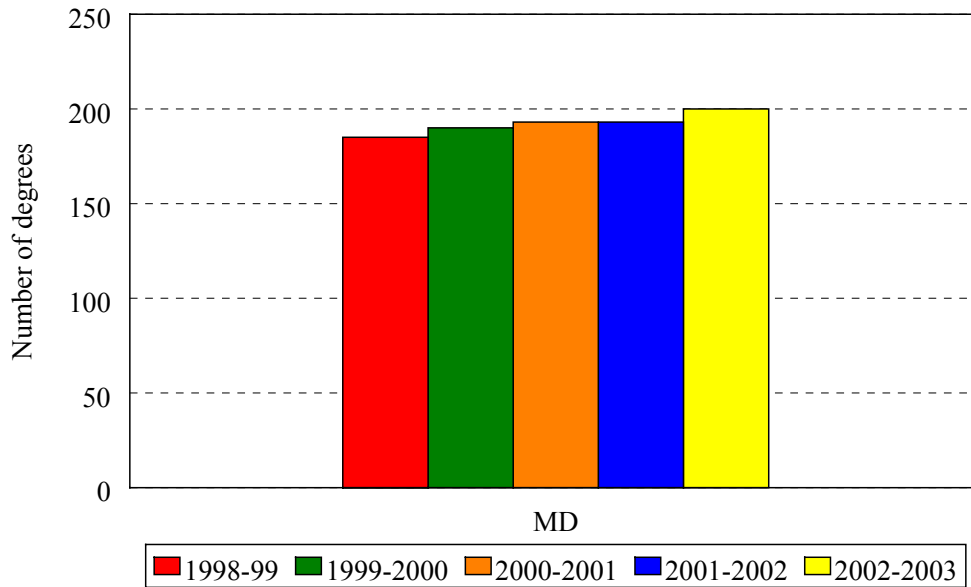
**Fall 1999 to Fall 2003**



Residency	Year									
	1999		2000		2001		2002		2003	
	N	% of total	N	% of total	N	% of total	N	% of total	N	% of total
New York State	748	99%	757	98%	752	97%	751	97%	742	96%
New York City	540	71%	483	62%	537	69%	527	68%	512	66%
Bronx	19	3%	20	3%	19	2%	18	2%	17	2%
Kings (Brooklyn)	272	36%	224	29%	258	33%	249	32%	243	31%
Manhattan	71	9%	64	8%	72	9%	83	11%	81	10%
Queens	136	18%	130	17%	144	19%	142	18%	134	17%
Richmond (Staten I.)	42	6%	45	6%	44	6%	35	5%	37	5%
Other U.S.	10	1%	18	2%	23	3%	24	3%	33	4%
International			0	0%	0	0%	0	0%	0	0%
<b>Total</b>	<b>758</b>		<b>775</b>		<b>775</b>		<b>775</b>		<b>775</b>	



**College of Medicine: MD and MD/MPH  
Degrees Granted by Level  
Fiscal Years 1997-1998 to 2001-2002**



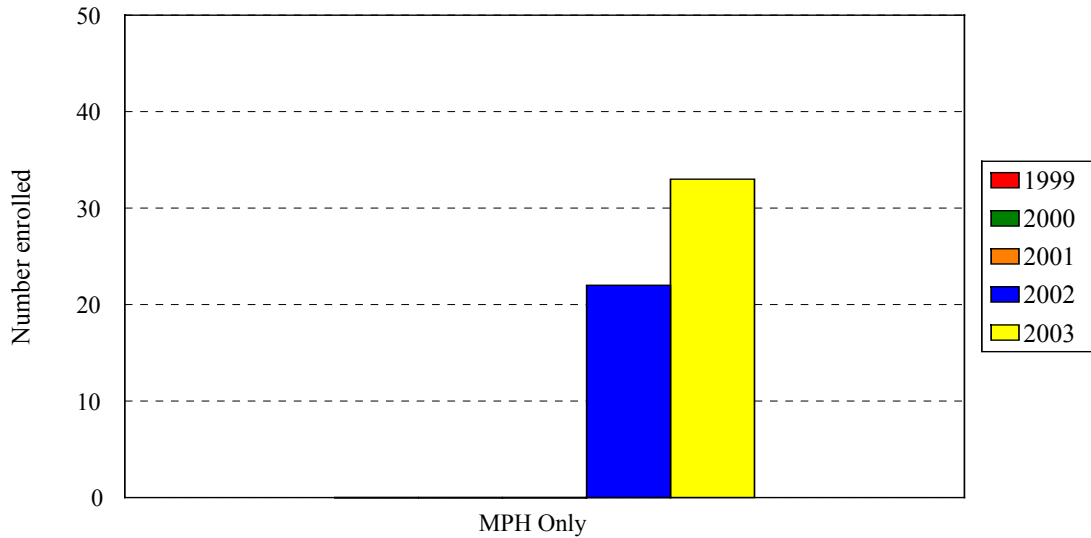
Degrees granted during July 1 (year 1) to June 30 (year 2) periods.

Degree Level	Year				
	1998-1999	1999-2000	2000-2001	2001-2002	2002-2003
Doctor of Medicine	185	190	193	193	200
Change from previous year	-9%	3%	2%	0%	4%

DEGREES EARNED BY ETHNIC GROUP  
COLLEGE OF MEDICINE

Ethnic Group	Year				
	1998-1999	1999-2000	2000-2001	2001-2002	2002-2003
White	108	121	104	106	117
% change	0%	12%	-14%	1%	10%
Black	19	18	26	18	21
% change	27%	-5%	44%	3%	17%
Hispanic	5	8	9	10	9
% change	-58%	60%	13%	12%	-10%
Asian	53	43	53	59	52
% change	-20%	-19%	23%	2%	-12%
Native American			1	0	0
International	0	0	0	0	0
% change					
Unknown	0	0	0	0	0
% change					
<b>Total</b>	<b>185</b>	<b>190</b>	<b>193</b>	<b>193</b>	<b>200</b>
Change from previous year	-9%	3%	2%	0%	4%

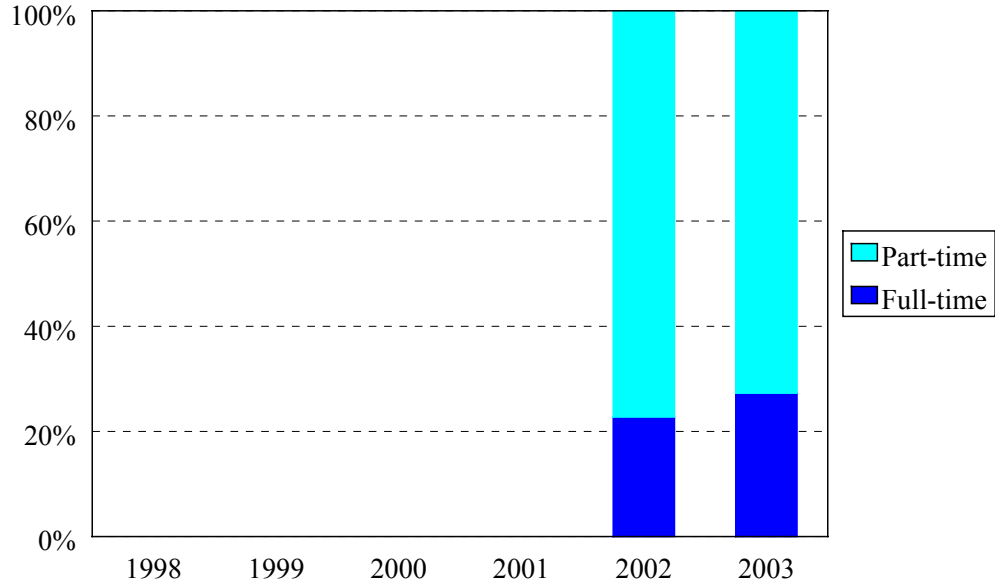
## Masters of Public Health Fall 1999 to Fall 2003



College of Medicine MD and MD/MPH	Year				
	1999	2000	2001	2002	2003
New students				22	11
Continuing students				0	22
<b>All Students</b>				<b>22</b>	<b>33</b>
Change from previous year					+50%

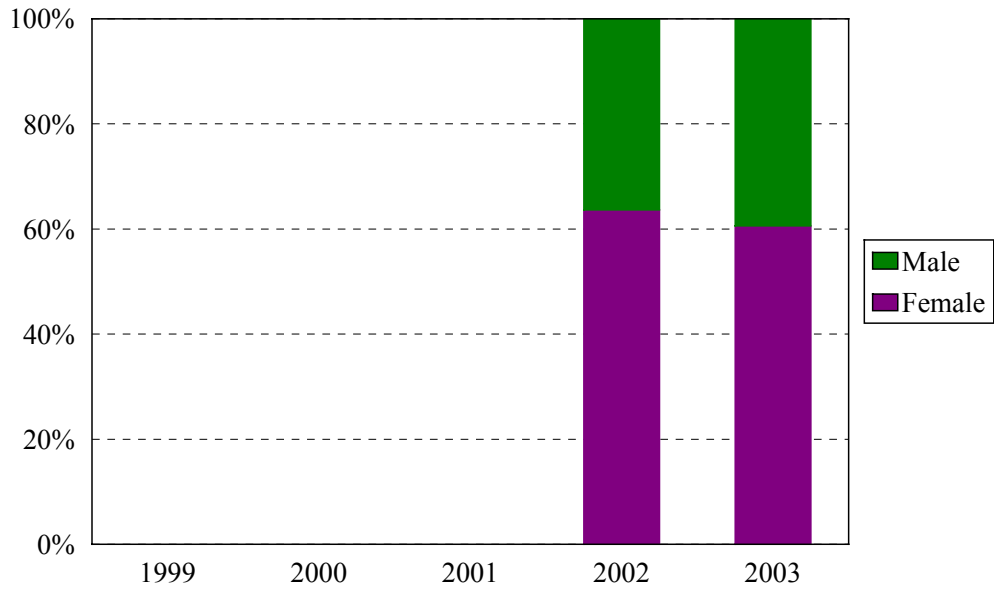
- The totals do **not** include students concurrently enrolled in the MD and MPH Programs: 6 in 2003 and 10 in 2002.

**Masters of Public Health  
Enrollment by Full- and Part-time Status  
Fall 1999 to Fall 2003**



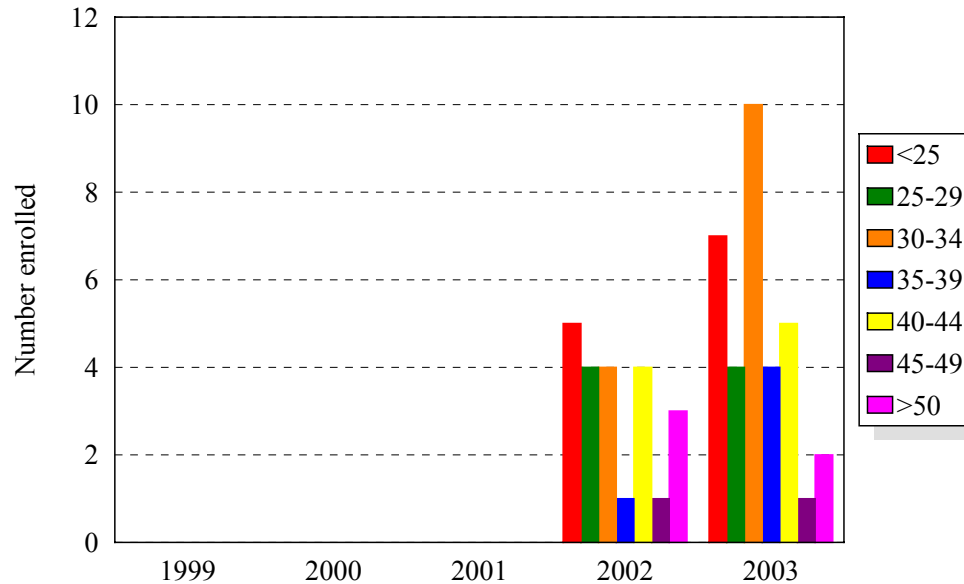
Enrollment Levels	Year				
	1999	2000	2001	2002	2003
Full-time				5	9
Part-time				17	24
% Full-time				23%	27%
<b>Total</b>				<b>22</b>	<b>33</b>

## Masters of Public Health Enrollment by Gender Fall 1999 to Fall 2003



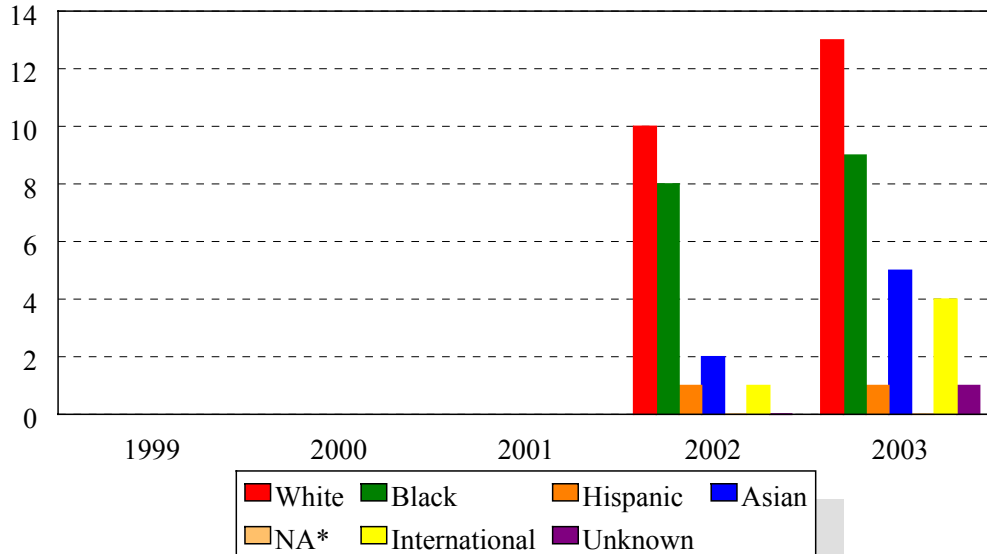
Gender	Year			Year			Year			Year			Year		
	1999			2000			2001			2002			2003		
	F	M	%F	F	M	%F	F	M	%F	F	M	%F	F	M	%F
<b>All Students</b>										14	8	64%	20	13	61%
Change from previous year															-3%

## Masters of Public Health Enrollment by Age Level Fall 1999 to Fall 2003



Age	Year									
	1999		2000		2001		2002		2003	
	N	%	N	%	N	%	N	%	N	%
Under 25							5	23%	7	21%
25-29							4	18%	4	12%
30-34							4	18%	10	30%
35-39							1	5%	4	12%
40-44							4	18%	5	15%
45-49							1	5%	1	3%
50 and over							3	14%	2	6%
<b>Median age</b>							<b>31</b>		<b>31</b>	
<b>Age range</b>							<b>21-51</b>		<b>21-53</b>	
<b>Total</b>							<b>22</b>		<b>33</b>	

## Masters of Public Health Enrollment by Ethnic Group Fall 1999 to Fall 2003

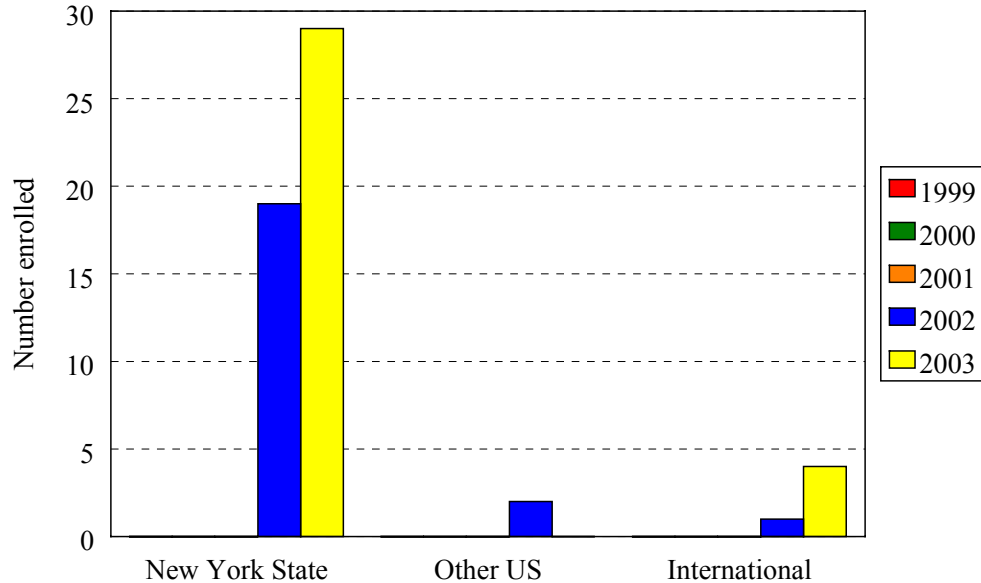


Ethnic Group (IPEDS Categories)	Year									
	1999		2000		2001		2002		2003	
	N	%	N	%	N	%	N	%	N	%
White							10	45%	13	39%
Black							8	36%	9	27%
Hispanic							1	5%	1	3%
Asian/Pacific Islander							2	9%	5	15%
Native American								0%		
International							1	5%	4	12%
Unknown								0%	1	3%
<i>Black and Hispanic</i>							9	41%	10	30%
<b>Total</b>							<b>22</b>		<b>33</b>	

- The Integrated Postsecondary Education Data Set (IPEDS) ethnic categories are those used by the U.S. Department of Education.

## College of Medicine: MPH Only Enrollment by Permanent Residence

**Fall 1999 to Fall 2003**



Residency	Year									
	1999		2000		2001		2002		2003	
	N	% of total	N	% of total	N	% of total	N	% of total	N	% of total
New York State							13	59%	29	88%
New York City							13	59%	23	70%
Bronx							0	0%	1	3%
Kings (Brooklyn)							10	45%	17	52%
Manhattan							3	14%	3	9%
Queens							0	0%	2	6%
Richmond (Staten I.)							0	0%	0	0%
Other U.S.							2	9%	0	0%
International							1	5%	4	12%
<b>Total</b>							<b>22</b>		<b>33</b>	