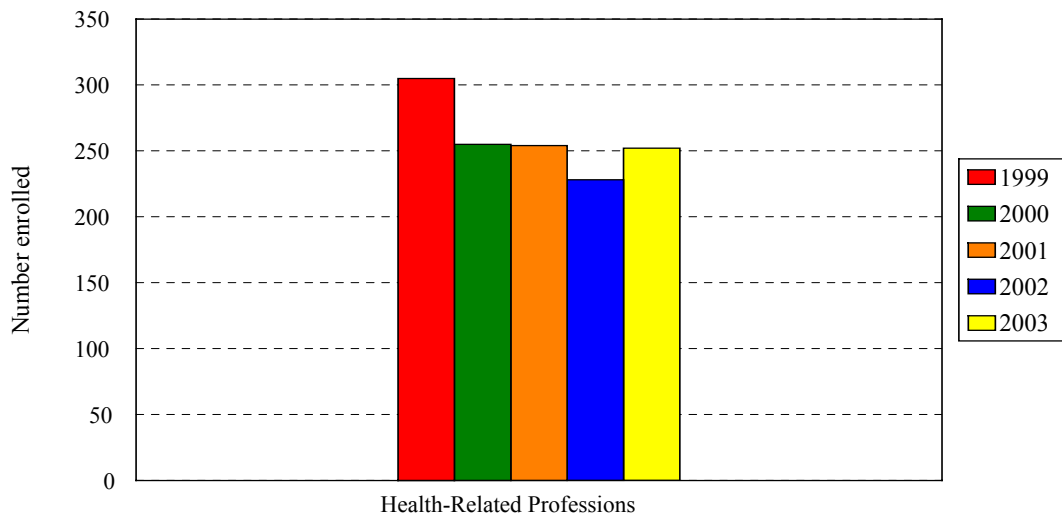


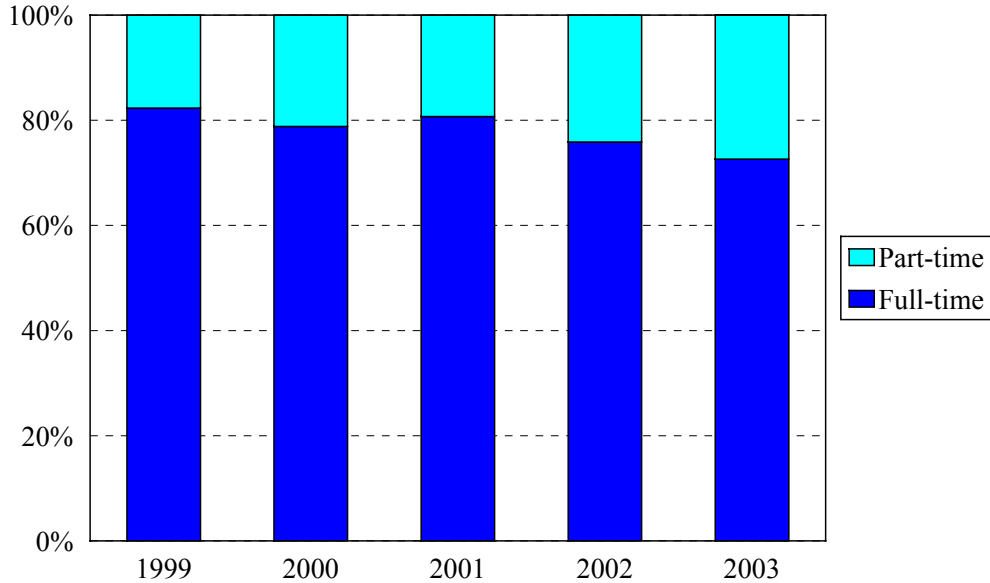
College of Health Related Professions Enrollment Fall 1999 to Fall 2003



Award	Program	Code	Year				
			1999	2000	2001	2002	2003
CERT	Health Information Management	1127	1	0	0	0	0
BS	Diagnostic Medical Imaging	1056	49	44	38	39	42
BS	Health Information Management, BS	1126	17	17	7	0	0
BS	Occupational Therapy	292	103	60	32	4	0
BS	Physical Therapy (BS and BS/MS)	295	39	28	32	26	27
BS	Physician's Assistant	252	61	63	57	58	64
	Non-matriculated	000	8	1	0	2	0
	<i>Total Undergraduate</i>		<i>278</i>	<i>213</i>	<i>166</i>	<i>129</i>	<i>133</i>
CAS	Midwifery- Direct Entry	964	4	3	2	2	
CERT	Midwifery- RN	965	4	2	5	5	3
CERT	Nurse Midwifery	064					
MS	Midwifery- Direct Entry	967	11	6	9	10	13
MS	Midwifery: RN	968	6	13	5	8	12
MS	Midwifery (MS completion)	969			5	6	6
MS	Occupational Therapy	970		15	40	56	60
MS	Physical Therapy (BS and BS/MS)	971			21	11	13
MS	Medical Informatics	975					11
	Non-matriculated	999	2	3	1	1	1
	<i>Total Graduate</i>		<i>27</i>	<i>42</i>	<i>88</i>	<i>99</i>	<i>119</i>
	Total		305	255	254	228	252
	Change from previous year		2%	-16%	0%	-10%	11%

College of Health Related Professions Enrollment by Full- and Part-time Status

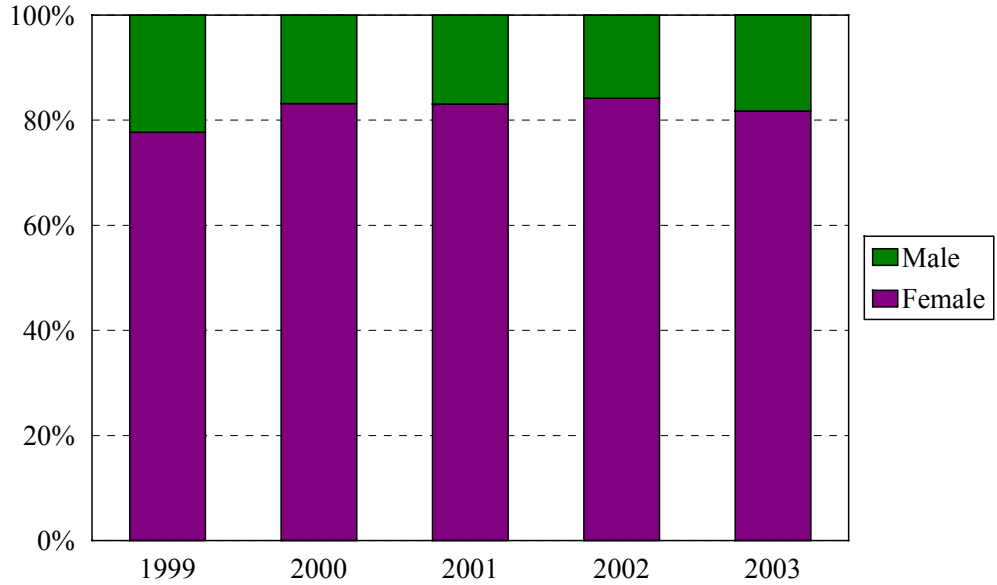
Fall 1999 to Fall 2003



Program	Code	Year					
		1999			2000		
		FT	PT	%FT	FT	PT	%FT
Health Info. Mgt CERT	1127	1	0	100%	35	9	80%
Diagnostic Medical Imaging	1056	40	9	82%	7	10	41%
Health Info. Mgt BS	1126	8	9	47%	51	9	85%
Occupational Therapy	292	92	11	89%	0	4	0%
Physical Therapy	294	35	4	90%	20	4	83%
Physician's Assistant	252	55	6	90%	58	5	92%
Non-matriculated	000	0	8	0%		1	0%
<i>Total Undergraduate</i>		<i>231</i>	<i>47</i>	<i>83%</i>	<i>171</i>	<i>42</i>	<i>80%</i>
Midwifery Direct Entry CAS	964	4	0		3		100%
Midwifery- RN	965	4	0	100%	1	1	50%
Midwifery- RN: CAS,MS	966						
Midwifery- Direct Entry MS	967	5	1	67%	5	1	83%
Midwifery-RN MS	968	6	5	62%	6	7	46%
Midwifery (MS completion)	969						
Occupational Therapy	970				14	1	93%
Non-matriculated	999	1	1	50%	1	2	33%
<i>Total Graduate</i>		<i>20</i>	<i>7</i>	<i>71%</i>	<i>30</i>	<i>12</i>	<i>71%</i>
Total		251	54	82%	201	54	79%
Change from previous year				0%			-3%

Program	Code	Year								
		2001			2002			2003		
		FT	PT	%FT	FT	PT	%FT	FT	PT	%FT
Health Info. Mgt CERT	1127									
Diagnostic Medical Imaging	1056	33	5	87%	32	7	82%	37	5	88%
Health Info. Mgt BS	1126	5	2	71%						
Occupational Therapy	292	32	0	100%	3	1	75%			
Physical Therapy: BS	294	4	1	80%	0	2	0%			
Physical Therapy: BS/MS	295	22	5	81%	21	3	88%	21	6	78%
Physician's Assistant	252	50	7	88%	55	3	95%	55	9	86%
Non-matriculated	999				0	2	0%			
Total Undergraduate		146	20	88%	111	18	86%	113	20	85%
Midwifery Direct Entry CAS	964	2	0	100%	1	1	50%			
Midwifery- RN	965	2	3	40%	0	5	0%	1	2	33%
Midwifery- Direct Entry MS	967	8	1	89%	10	0	100%	11	2	85%
Midwifery-RN MS	968	4	1	80%	4	4	50%	5	7	42%
Midwifery (MS completion)	969	0	5	0%	0	6	0%	0	6	0%
Occupational Therapy	970	30	10	75%	37	19	66%	36	24	60%
Physical Therapy (BS and BS/MS)	971	13	8	62%	10	1	91%	12	1	92%
Medical Informatics	975							5	6	45%
Non-matriculated	999	0	1	0%	0	1	0%	0	1	0%
<i>Total Graduate</i>		59	29	67%	62	37	63%	70	49	59%
Total		205	49	81%	173	55	76%	183	69	73%
Change from previous year				2%			-5%			-3%

College of Health Related Professions Enrollment by Gender Fall 1999 to Fall 2003



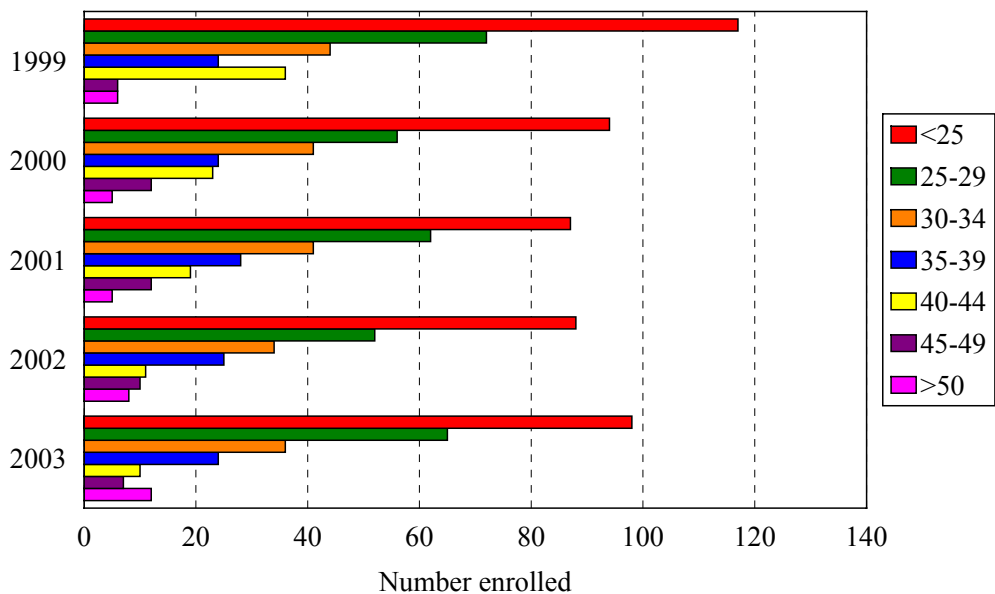
Gender	Year				
	1999	2000	2001	2002	2003
Female	237	212	211	192	206
Male	68	43	43	36	46
% Female	78%	83%	83%	84%	82%
Total	305	255	254	228	252

ENROLLMENT BY GENDER
COLLEGE OF HEALTH RELATED PROFESSIONS

Award	Program	Code	1999		2000		2001		2002		2003	
			F	M	F	M	F	M	F	M	F	M
CERT	Health Information Management	1127	1	0								
BS	Diagnostic Medical Imaging	1056	42	7	42	2	35	3	33	6	36	6
BS	Health Information Management	1126	15	2	15	2	6	1				
BS	Occupational Therapy	292	82	21	46	14	25	7	4	0		
BS	Physical Therapy: BS	294	20	19	3	1	4	1	1	1		
BS	Physical Therapy: BS/MS	295			16	8	22	5	17	7	16	11
BS	Physician's Assistant	252	43	18	48	15	43	14	41	17	46	18
	Non-matriculated	000	7	1	1	0			1	1		
	<i>Total Undergraduate</i>		<i>210</i>	<i>68</i>	<i>171</i>	<i>42</i>	<i>135</i>	<i>31</i>	<i>97</i>	<i>32</i>	<i>98</i>	<i>35</i>
CAS	Midwifery- Direct Entry	964	4		3		2		2	0		
CAS	Midwifery- RN	965	4		2		4	1	5	0	3	0
	Medical Informatics	975									9	2
MS	Midwifery- Direct Entry	967	6		6		9		10	0	12	1
MS	Midwifery-RN MS	968	11		13		5		8	0	12	0
MS	Midwifery (MS completion)	969					5		6	0	6	0
MS	Occupational Therapy	970			15		38	2	54	2	56	4
MS	Physical Therapy (BS/MS)	971					12	9	9	2	10	3
	Non-matriculated	999	2		2	1	1		1	0	0	1
	<i>Total Graduate</i>		<i>27</i>		<i>41</i>	<i>1</i>	<i>76</i>	<i>12</i>	<i>95</i>	<i>4</i>	<i>108</i>	<i>11</i>
	Total		237	68	212	43	211	43	192	36	206	46
	Change from previous year		5%	-8%	-11%	-37%	0%	0%	-9%	-16%	7%	28%

Total Enrollment by Age Level

Fall 1999 to Fall 2003



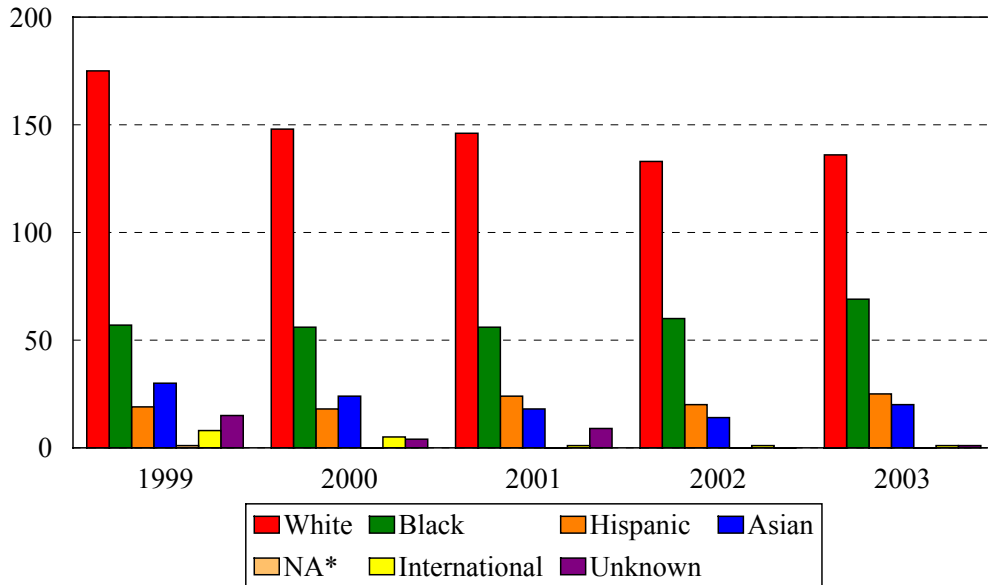
Age	Year									
	1999		2000		2001		2002		2003	
	N	%	N	%	N	%	N	%	N	%
Under 25	117	38%	94	37%	87	34%	88	39%	98	39%
25-29	72	24%	56	22%	62	24%	52	23%	65	26%
30-34	44	14%	41	16%	41	16%	34	15%	36	14%
35-39	24	8%	24	9%	28	11%	25	11%	24	10%
40-44	36	12%	23	9%	19	7%	11	5%	10	4%
45-49	6	2%	12	5%	12	5%	10	4%	7	3%
50 and over	6	2%	5	2%	5	2%	8	4%	12	5%
Median age	27		27		27		26		26	
Age range	19-53		19-54		18-54		19-55		19-68	
Total	305		255		254		228		252	

MEDIAN AGE BY PROGRAM
COLLEGE OF HEALTH RELATED PROFESSIONS

Award	Program	Code	Median Age				
			1999	2000	2001	2002	2003
CERT	Health Information Management	1127	34.0				
BS	Diagnostic Medical Imaging	1056	25.0	24.5	27.0	28.0	27.0
BS	Health Information Management, BS	1126	33.0	35.0	44.0		
BS	Occupational Therapy	292	26.0	25.5	29.0	24.0	
BS	Physical Therapy: BS	294	25.0	26.0	26.0	33.0	
BS/MS	Physical Therapy: BS/MS	295		26.0	24.0	23.5	24.0
BS	Physician's Assistant	252	26.0	26.0	26.0	26.0	26.0
	Non-matriculated	000	25.0	26.0		24.5	
	<i>Total Undergraduate</i>		<i>26.0</i>	<i>26.0</i>	<i>27.0</i>	<i>26.0</i>	<i>26.0</i>
CAS	Midwifery- Direct Entry	964	35.5	28.0	39.0	39.0	
CAS	Midwifery- RN	965	39.0	36.0	39.0	38.0	31.0
MS	Medical Informatics	975					34.0
MS	Midwifery- Direct Entry	967	38.5	34.5	31.0	27.0	26.0
MS	Midwifery-RN MS	968	42.0	38.0	39.0	34.5	27.0
MS	Midwifery (MS completion)	969			38.0	43.5	52.0
MS	Occupational Therapy	970		28.0	26.0	24.0	23.0
MS	Physical Therapy (BS and BS/MS)	971			28.0	28.0	25.0
	Non-matriculated	999	28.0	37.0	26.0	27.0	35.0
	<i>Total Graduate</i>		<i>39.0</i>	<i>33.0</i>	<i>29.0</i>	<i>27.0</i>	<i>26.0</i>
	Total		27.0	27.0	27.0	26.0	26.0
	Change from previous year		0	0	0	-1	0

College of Health Related Professions Enrollment by Ethnic Group

Fall 1999 to Fall 2003



*Native American

Ethnic Group (IPEDS Categories)	Year									
	1999		2000		2001		2002		2003	
	N	%	N	%	N	%	N	%	N	%
White	175	57%	148	58%	146	57%	133	58%	136	54%
Black	57	19%	56	22%	56	22%	60	26%	69	27%
Hispanic	19	6%	18	7%	24	9%	20	9%	25	10%
Asian/Pacific Islander	30	10%	24	9%	18	7%	14	6%	20	8%
Native American	1	0%	0	0%	0	0%	0	0%	0	0%
International	8	3%	5	2%	1	0%	1	0%	1	0%
Unknown	15	5%	4	2%	9	4%	0	0%	1	0%
<i>% Black and Hispanic</i>		25%		29%		31%		35%		37%
Total	305		255		254		228		252	

- The Integrated Postsecondary Education Data Set (IPEDS) ethnic categories are those used by the U.S. Department of Education.

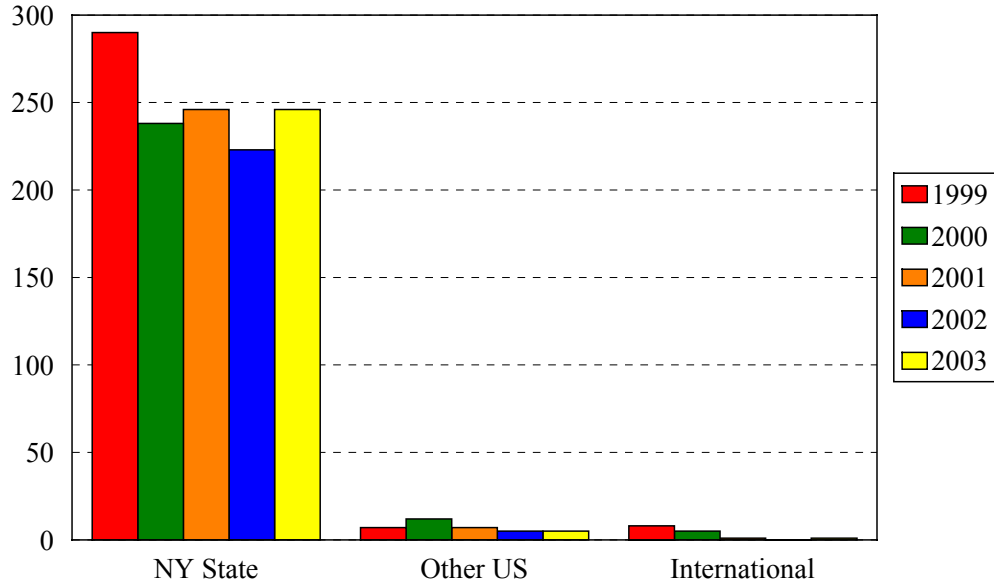
ENROLLMENT BY ETHNIC GROUP BY PROGRAM
COLLEGE OF HEALTH RELATED PROFESSIONS

Program		White	Black	Hispanic	Asian	NA	Inter.	Unknown	White	Black	Hispanic	Asian	NA	Inter.	Unknown
		1999							2000						
Undergraduate															
Health Info. Management Cert.	1127	1													
Diagnostic Medical Imaging BS	1056	24	14		5		4	2	25	10		5		4	
Health Information Mgt BS	1126	4	11		2				3	10	1	3			
Occupational Therapy BS	292	77	3	9	8		2	4	45	2	6	5			2
Physical Therapy BS	294	22	3	5	7		2		3		1				
Physical Therapy BS/MS	295								17	2	4	1			
Physician's Assistant BS	252	28	20	4	6			3	26	23	4	9			1
Non-matriculated	999	2	1	1	1			3						1	
<i>Total Undergraduate</i>		<i>158</i>	<i>52</i>	<i>19</i>	<i>29</i>	<i>0</i>	<i>8</i>	<i>12</i>	<i>119</i>	<i>47</i>	<i>16</i>	<i>23</i>	<i>0</i>	<i>5</i>	<i>3</i>
Graduate															
Midwifery- Direct Entry CAS	964	3			1	1			1	1		1			
Midwifery- RN CAS	965	1	2			1				2					
Medical Informatics	975														
Midwifery- Direct Entry MS	967	5	0					1	6						
Midwifery-RN MS	968	6	3					2	9	2	1				1
Midwifery (MS completion)	969														
Occupational Therapy MS	970	2							11	3	1				
Physical Therapy (BS and BS/MS)	971														
Non-matriculated	999	2							2	1					
<i>Total Graduate</i>		<i>19</i>	<i>5</i>	<i>0</i>	<i>1</i>	<i>2</i>	<i>0</i>	<i>3</i>	<i>29</i>	<i>9</i>	<i>2</i>	<i>1</i>	<i>0</i>	<i>0</i>	<i>1</i>
<i>Total</i>		<i>177</i>	<i>57</i>	<i>19</i>	<i>30</i>	<i>2</i>	<i>8</i>	<i>15</i>	<i>148</i>	<i>56</i>	<i>18</i>	<i>24</i>	<i>0</i>	<i>5</i>	<i>4</i>

	White	Black	Hispanic	Asian	NA	Inter.	Unknown	White	Black	Hispanic	Asian	NA	Inter.	Unknown	White	Black	Hispanic	Asian	NA	Inter.	Unknown		
	2001							2002							2003								
Undergraduate	1127							6															
	1056	22	10		2		1	3	23	7	2	6		1		25	6	2	8			1	
	1126	1	5	1																			
	292	23	2	4	3				2		2												
	294	4		1					2														
	295	15	5	2	3			2	15	5	2	2			16	6	3	1				1	
	252	22	20	6	8			1	18	29	7	4			21	30	8	5					
	000								2														
	<i>total</i>	<i>87</i>	<i>42</i>	<i>14</i>	<i>16</i>	<i>0</i>	<i>1</i>	<i>6</i>	<i>62</i>	<i>41</i>	<i>13</i>	<i>12</i>	<i>0</i>	<i>1</i>	<i>0</i>	<i>62</i>	<i>42</i>	<i>13</i>	<i>14</i>	<i>0</i>	<i>1</i>	<i>1</i>	<i>1</i>
Graduate	964	1	1						1	1													
	965	3	2						1	4					1	1	1						
	975														3	6		2					
	967	4	1	1	1			2	4	3	2	1			4	5	3	1					
	968	3	1	1					5	1	2				8	3	1						
	969	3	2						5	1					2	2	2						
	970	32	6	2					46	7	3				49	7	3	1					
	971	13	1	5	1			1	8	2		1			7	3	2	1					
	999			1					1									1					
<i>total</i>	<i>59</i>	<i>14</i>	<i>10</i>	<i>2</i>	<i>0</i>	<i>0</i>	<i>3</i>	<i>71</i>	<i>19</i>	<i>7</i>	<i>2</i>	<i>0</i>	<i>0</i>	<i>0</i>	<i>74</i>	<i>27</i>	<i>12</i>	<i>6</i>	<i>0</i>	<i>0</i>	<i>0</i>	<i>0</i>	
<i>Total</i>	<i>146</i>	<i>56</i>	<i>24</i>	<i>18</i>	<i>0</i>	<i>1</i>	<i>9</i>	<i>133</i>	<i>60</i>	<i>20</i>	<i>14</i>	<i>0</i>	<i>1</i>	<i>0</i>	<i>136</i>	<i>69</i>	<i>25</i>	<i>20</i>	<i>0</i>	<i>1</i>	<i>1</i>	<i>1</i>	

College of Health Related Professions Enrollment by Permanent Residence

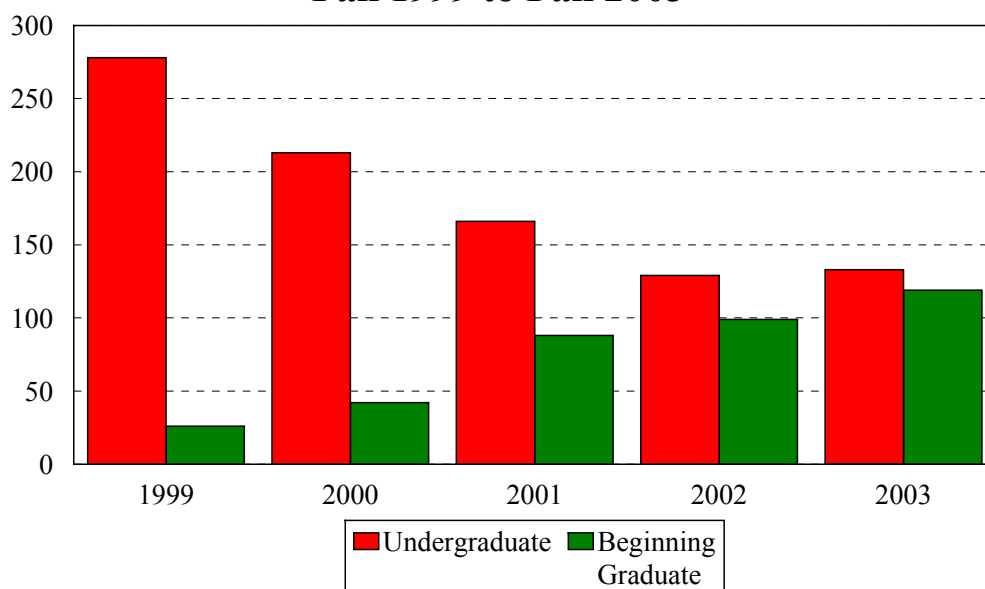
Fall 1999 to Fall 2003



Residency	Year									
	1999		2000		2001		2002		2003	
	N	% of total	N	% of total	N	% of total	N	% of total	N	% of total
New York State	290	95%	238	93%	246	97%	223	98%	246	98%
New York City	242	79%	195	76%	201	79%	197	86%	220	87%
Bronx	8	3%	7	3%	6	2%	6	3%	8	3%
Kings (Brooklyn)	161	53%	125	49%	130	51%	126	55%	146	58%
Manhattan	20	7%	13	5%	9	4%	16	7%	19	8%
Queens	35	11%	34	13%	43	17%	43	19%	41	16%
Richmond (Staten I.)	18	6%	16	6%	13	5%	6	3%	6	2%
Other U.S.	7	2%	12	5%	7	3%	5	2%	5	2%
International	8	3%	5	2%	1	0%	0	0%	1	0%
Total	305		255		254		228		252	

College of Health Related Professions Enrollment by Student Level

Fall 1999 to Fall 2003



Student Level	Year									
	1999		2000		2001		2002		2003	
	N	%	N	%	N	%	N	%	N	%
Undergraduate	278	91%	213	84%	166	65%	129	57%	119	47%
Beginning Graduate	27	9%	42	16%	88	35%	99	43%	133	53%
Total	305		255		254		228		252	

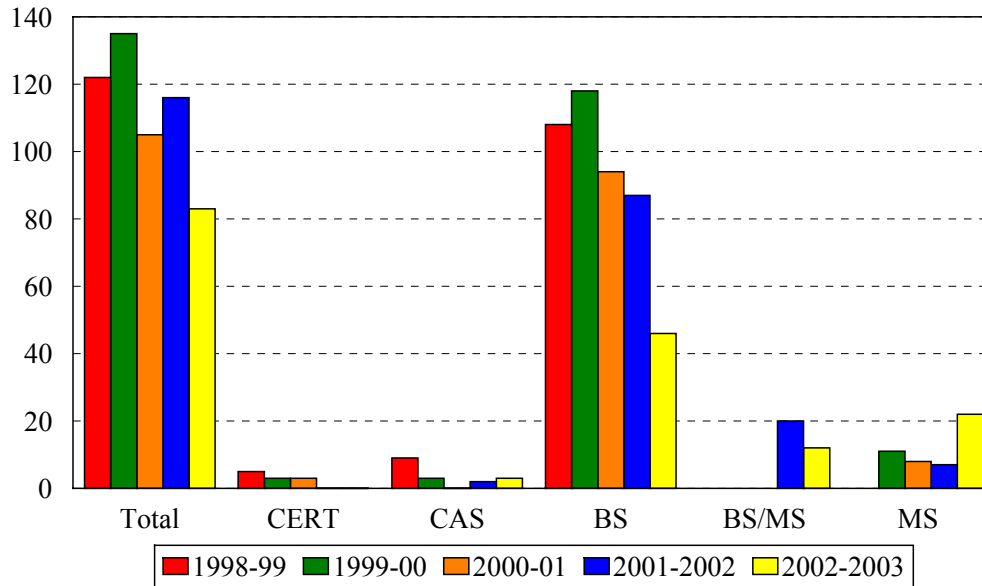
ENROLLMENT BY STUDENT LEVEL
COLLEGE OF HEALTH RELATED PROFESSIONS

Program	Code	1999		2000	
		Undergraduates	Beginning Graduates	Undergraduates	Beginning Graduates
Health Info. Mgt CERT	1127	1			
Diagnostic Medical Imaging	1056	49		44	
Health Info. Mgt BS	1126	17		17	
Occupational Therapy	292	103		60	
Physical Therapy	294	39		4	
Physician's Assistant	252			24	
Non-matriculated	000	61		63	
Midwifery Direct Entry CAS	964	8		1	
Midwifery- RN	965		4		2
Non-matriculated undergrad	999		4		3
Nurse Midwifery CERT	064		6		6
Midwifery- Direct Entry MS	967		11		13
Midwifery-RN MS	968				
Midwifery (MS completion)	969				15
Non-matriculated	999				
Total			2		3
Change from previous year		278	27	213	42
		1%	18%	-23%	50%

Program	Code	2001		2002		2003	
		Undergraduates	Beginning Graduates	Undergraduates	Beginning Graduates	Undergraduates	Beginning Graduates
Health Info. Mgt CERT	1127						
Diagnostic Medical Imaging	1056	38		39		42	
Health Info. Mgt BS	1126	7					
Occupational Therapy	292	32		4			
Physical Therapy	294	5		2			
Physical Therapy (BS/MS)	295	27		24		27	
Physician's Assistant	252	57		58		64	
Non-matriculated undergrad.	999	0		2			
Midwifery- RN	965		5		5		3
Nurse Midwifery CERT	964		2		2		
Medical Informatics	975						11
Midwifery- Direct Entry MS	967		9		10		13
Midwifery-RN MS	968		5		8		12
Midwifery (MS completion)	969		5		6		6
Occupational Therapy-MS	970		40		56		60
Physical Therapy (BS/MS)	971		21		11		13
Non-matriculated grad.	999		1		1		1
Total		166	88	129	99	133	119
Change from previous year		-22%	126%	-22%	13%	3%	20%

College of Health Related Professions Degrees Granted by Level

1998-99 to 2002-2003



Degrees	Code	Year				
		1998-99	1999-00	2000-01	2001-02	2002-03
Health Info. Mgt CERT	1127	1	3			
Diagnostic Medical Imaging BS	1056	22	19	25	14	15
Health Info. Mgt BS	1126	22	18	7	13	2
Occupational Therapy BS	292	22	38	29	28	4
Physical Therapy BS	294	18	19	5	4	
Physical Therapy BS/MS	971				20	12
Physician's Assistant BS	252	24	25	27	28	25
Nurse Midwifery CERT	964			1		2
Midwifery Direct Entry CERT	967		4	3		
Midwifery Direct Entry MS	967				3	2
Midwifery Direct Entry CAS	964	4				
Midwifery- RN CAS	965	10	3		2	1
Midwifery:- RN MS	968		7	8	4	3
Midwifery:- RN MS	969					5
Occupational Therapy MS	970					12
Total		123	136	105	116	83
Change from previous year		-10%	11%	-23%	10%	-28%

DEGREES EARNED BY ETHNIC GROUP
COLLEGE OF HEALTH RELATED PROFESSIONS

Ethnic Group	Year				
	1998-99	1999-00	2000-01	2001-02	2002-03
White	68	82	61	67	50
% change	-17%	21%	-26%	10%	-25%
Black	29	21	22	27	18
% change	-3%	-28%	5%	23%	-33%
Hispanic	9	7	4	10	7
% change	29%	-22%	-43%	150%	-30%
Asian	13	17	9	8	8
% change	-7%	31%	-47%	-11%	0%
Native American	0	1	0		
% change		-100%			
International	3	3	5	1	
% change				-80%	
Unknown	1	5	4	3	
% change				-25%	
Total	123	136	105	116	83
Change from previous year	-10%	11%	-23%	10%	-28%