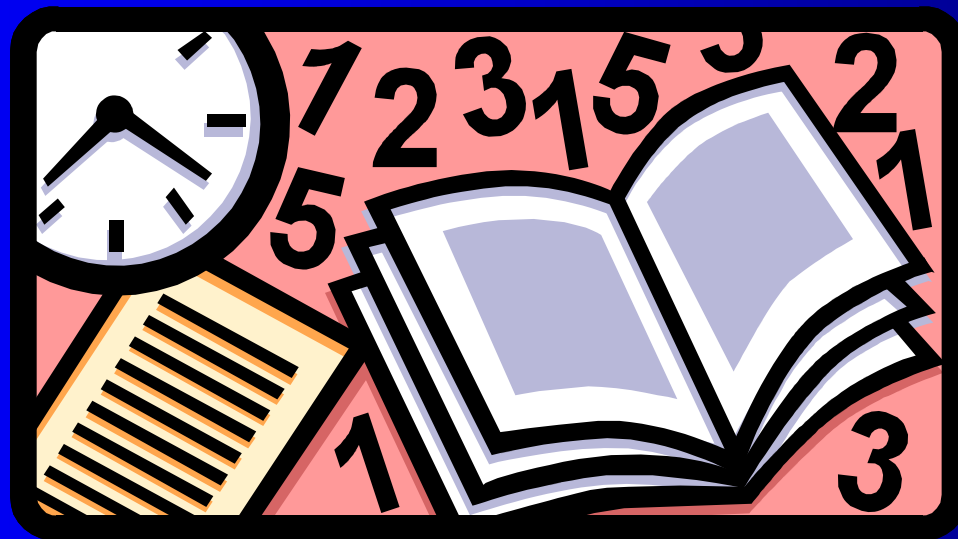


# SENIOR TIMELINE

Class of 2008



*January 2007*

# Senior Class Meeting Series

- First of 5      Senior Timeline
- March      Composing Senior Schedule
- April      Dept Residency Advice Mtgs
- June      Residency App Process
- October      Interviewing Do's & Don'ts
- Dec/January      Ranking Residency Prog
- Ongoing      Q & A seminars

# This meeting should.....

- Give you an **overview** of the next 18 months
- Make you **comfortable** being more familiar with what to expect
- Assure you that over the next few months and beyond, there will be **people** and **resources** to **assist** you through your senior year and residency process.

# This meeting should NOT:

- Create **anxiety** (but it always does for some...)
- Make you feel like you should already know what you want to be “when you grow up” (but it might...)

# Careers in Medicine



Contact Anne Shonbrun for  
Access Code and Password:

*Select “New User” and follow  
directions to create your own ID and  
Password*

- [www.aamc.org/careers  
inmedicine](http://www.aamc.org/careers_inmedicine)
- Valuable resource  
which includes:
  - Self-Assessment Tools
  - Decision Process
  - **Specialty Profiles**

# April is Career Month

- ❖ Clinical Departmental Meetings with students interested in field
  - ❖ Pertinent residency application advice
- ❖ Student-to-Student Residency Forum
  - ❖ Students who just matched share insights one-on-one
- ❖ Individual appointments with Clinical Assistant Dean and Specialty Advisors
  - ❖ Specialty advisor list being updated. Current one on-line under Student Affairs - Career Planning

# Clinical Requirements for Graduation - Class of 2008

- ❖ Successful completion of all clerkships

- ✓ Trans. to Clerkships

- ✓ Medicine - 10 wk

- ✓ Pediatrics - 6 wk

- ✓ Primary Care I - 6 wk

- ✓ Women's Health - 6 wk

- ✓ Surgery - 8 wk

- ✓ Psychiatry - 6 wk

- ✓ Neurology - 4 wk

- ✓ Anesthesiology - 2wk

- ✓ Emergency Med - 2 wk

# Clinical Requirements for Graduation - Class of 2008

- **Primary Care II - Geriatrics/Palliative Care - 4 weeks**
  - Must be done at a SUNY affiliate
- **Full Month Subinternship** (*SUNY Downstate affiliate*)
  - **Medicine or Pediatrics**
- **Emerging Concepts in Medicine - 2 weeks in March**
- **Transition to Residency - 1 week in March**
- **20 weeks (credits) of Electives**
  - Check distribution requirements for subspecialties, research, and extramural electives



# Primary Care II Block

- Students are scheduled:
  - June, July, Aug, Sept, Oct, Nov, Feb, April, May
  - Special circumstances – email Anne Shonbrun
- Dates coincide with elective dates for easy scheduling
- One-to-one switches are permitted
- Assignments will be e-mailed February 9th

# Electives/Subinternships

- “Intramural”, or SUNY Downstate electives in the Course Selection Book on-line, to be taken July 2007 and beyond, are registered for through a lottery in April.
- If you have elective time this spring, you must complete an add/drop form in the Office of the Registrar.
- Preferences for Subinternship months are also entered through the lottery.

# Senior Year Schedule Issues

- Remaining Core Clerkship Lottery
  - Instructions will be e-mailed and will be on the web
  - Psychiatry, Neurology, Anesthesia, Emer Medicine
  - Other clerkships - schedule individually with Ms. Shonbrun
- Clerkship Reexamination Schedule
  - Required 2 week study period with no course work while studying and during scheduled date of examination.
  - Schedule will be distributed at **3/29** class meeting

# Extramural & Other Special Electives

## ➤ Extramural (Off-Campus) Electives

### ➤ Purpose

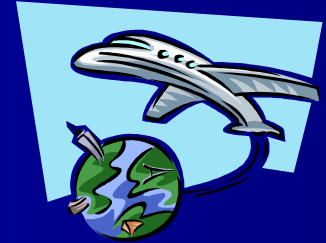
- “Audition Electives”
- Obtain Letters of Recommendation
- Be exposed to different clinical experiences

### ➤ Timing of application and actual rotation

### ➤ Website information

[www.aamc.org/students/medstudents/electives/start.htm](http://www.aamc.org/students/medstudents/electives/start.htm)

## ➤ Research Electives, International Electives, Health Care in Developing Countries, Indian Health Service



# USMLE Step 2

- Step 2 has two parts: Step 2 CK (Clinical Knowledge) and Step 2 CS (Clinical Skills)
- Taking Step 2 CK & CS is a graduation requirement.
- All students are **required** to take both Step 2 CK & Step 2 CS by January 31, 2008.
- Cost can be included in the senior year Financial Aid/Student Loan package - once.

# Step 2 Clinical Skills Exam

- Cost of Step 2 CS this year: \$1005
- Score: Pass/Fail
- Register through NBME
- Registration for exam will begin this month
- Closest site: Philadelphia
- For latest info: [www.usmle.org/news/cse.htm](http://www.usmle.org/news/cse.htm)
- Required Standardized patient experience in spring - ECM Office will e-mail assignment

## Step 2 CK (Written) Timing Issues

- Students not satisfied with their performance on Step 1 should take Step 2 CK early, as should those who want to get it done and out of the way.
- Benefit of taking it early - close to MS3 shelf exams.
- Students generally take 2 weeks to 1 month off to study, or study during a light elective.
- To include Step 2 CK with the screening of your application, take by **August 15**, **August 1** for early match.

# Step 2 Timing Issues

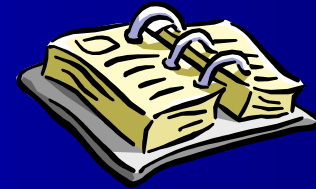
- To have Step 2 considered during the residency program **determinations (ranking)** Step 2 must be taken by **December 31, December 1 for early match.**
- To be able to view your Step 2 score prior to sending to programs, do not take the exam prior to sending out your ERAS application. *(Usually between Sept 1-Oct 1)*



# Letters of Recommendation

- LOR file is set up in Dean's Office in June.
- Most programs require 3 letters.
- MSPE Guidelines indicate residency program directors do not want letters dated prior to June of third year.
- Although YOUR ERAS is sent out in mid Sept, LOR's can be sent in by program deadlines which can be as late as 12/1.

# Senior Timeline



- **January/February 2007**
  - 1/25 Receive e-mail: Clin Asst Dean preferences
    - Deadline to return preference forms 2/5/2007
  - 2/9 Primary Care II assignments sent via e-mail
  - 2/12 Clin Assistant Dean Assignments e-mailed
  - 2/26 Remaining Core Clerkship Lottery Begins
    - Deadline to enter on the web 3/5/2007

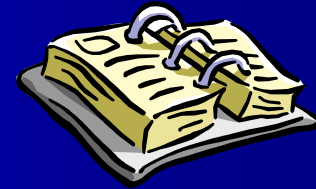
# Senior Timeline



## ➤ March 2007

- Begin meeting with Clinical Assistant Deans
- Begin to request info for off-campus electives
- AOA Specialty Forum
- 3/15 Match Day for Class of 2007
  - Come share the excitement!
- 3/16 Core Clerkship Schedule released

# Senior Timeline



## ➤ April 2007 - Career Month!

- 3/29 Class Meeting - Constructing Your Senior Schedule and General Residency Information
- Student-to-Student Residency Forum
- Elective/Subinternship Lottery Selections on Web and Submission of Clinical Schedule Planner
- All Month - Meet with Clinical Departments for Residency Information

# Senior Timeline



## ➤ May 2007

- Receive results of Elective/Subinternship Lottery and make any adjustments
- 5/29 Class of 2007 Commencement
- All Month Early Match Registration on Web
  - Neurosurgery, Ophthalmology, Urology
- Apply for / schedule USMLE Step 2 CK & CS

# Senior Timeline



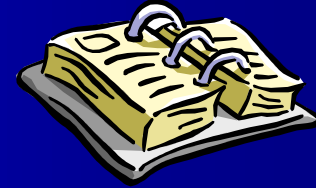
## ➤ June 2007

- 6/7 Detailed Class Meeting re: Residency Application Process
- Apply for and schedule USMLE Step 2 CK/CS

## ➤ July 2007

- Complete clerkships, Primary Care II, Elective, Subinternship
- Begin researching residency program info
- Apply for and schedule USMLE Step 2 CK/CS

# Senior Timeline



## ➤ August 2007

- Take Primary Care II, Elective or SubI
- Register for National Residency Matching Program (NRMP) on-line [www.nrmp.org](http://www.nrmp.org)
- Begin requesting letters of recommendation
- Begin writing personal statement and CV
- Electronic Residency Application Service (ERAS) opens application on web
- Take USMLE Step 2 CK

# Senior Timetable



## ➤ September 2007

- September 1 - earliest day you can submit ERAS app
- Work on/Complete ERAS application
- Take Primary Care II, Elective or SubI
- Early Match Deadlines Begin
- Review Student Transcript for Accuracy
- Continue writing personal statement and CV
- Take USMLE Step 2 CK



# Senior Timeline



## ➤ October 2007

- **Class Mtg - Residency Interviews Do's & Don'ts**
- Take Primary Care II, Elective or SubI
- Finalize ERAS app, personal statement by Oct 1
- Submit transcript requests & fees
- Follow-up Letters of Recommendation
- Review Med Stud Perf Evaluation (aka Dean's Let)
- Take USMLE Step 2 CK and/or CS

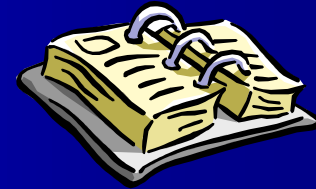
# Senior Timeline



## ➤ November 2007

- Take Primary Care II, Elective or SubI
- 11/1 Medical Student Performance Evaluation (MSPE) transmitted to programs
- Follow-up Letters of Recommendation
- Early Match Interviews
- Some regular Match interviews begin
- Take USMLE Step 2 CK and/or CS

# Senior Timeline



## ➤ December 2007

- Most students take this month off for **early match** and regular interviews
- Review credits for graduation
- Take USMLE Step 2 CK and/or CS - watch for scheduling conflict between interviews and exams.
- **Information meeting Early Match/NRMP ranking**

## ➤ January 2008

- Regular match interviews continue
- Submit early match rank lists and receive early results
- **Information meeting on NRMP ranking**

# Senior Timeline



## ➤ February 2008

- Submit regular match rank order list of residency choices

## ➤ March 2008

- Emerging Concepts in Medicine - 2wk
- Transition to Residency - 1 wk
- 3/20 **Match Day** - Class of 2008! (*Tentative*)

## ➤ May 28, 2008 COMMENCEMENT!!

# Need Help?



- Assistance with your individual senior schedule, some resources:
  - Your Clinical Assistant Dean
  - Specialty Advisors
  - Sophie Christoforou, Associate Dean
  - Anne Shonbrun, Associate Registrar
  - Sandra Mingo, College of Medicine Coordinator
    - All registration, adding/dropping, grading issues