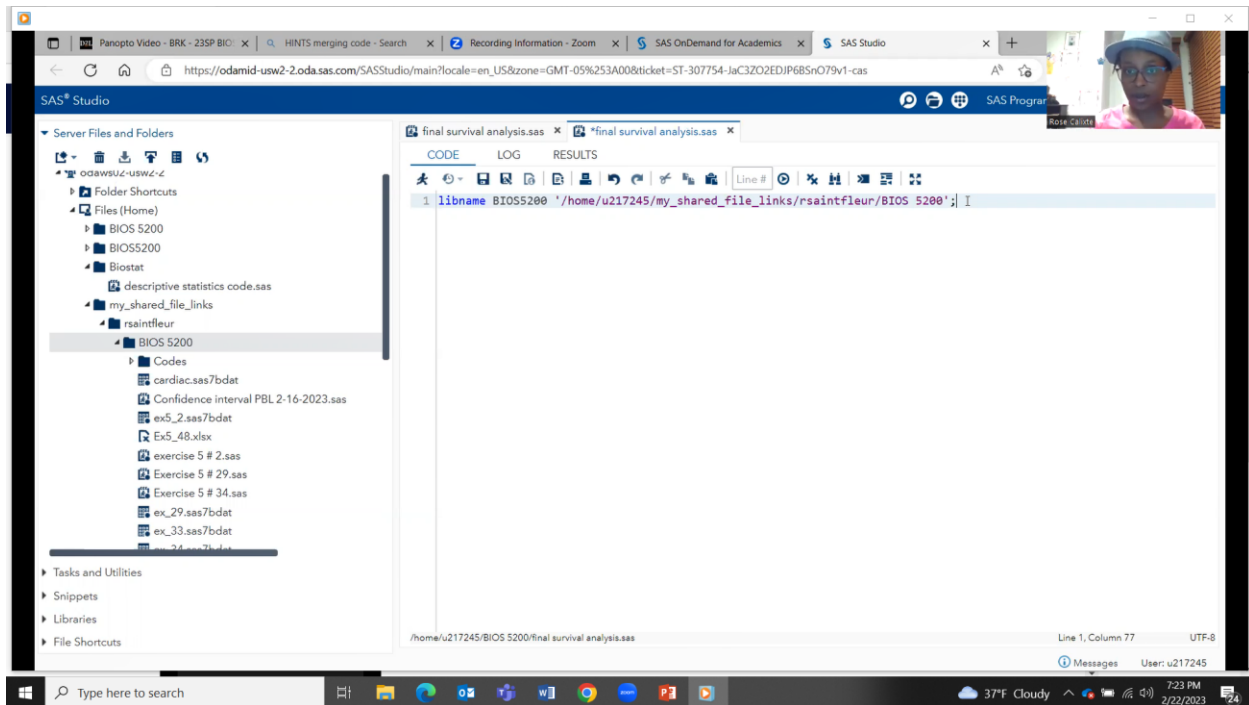
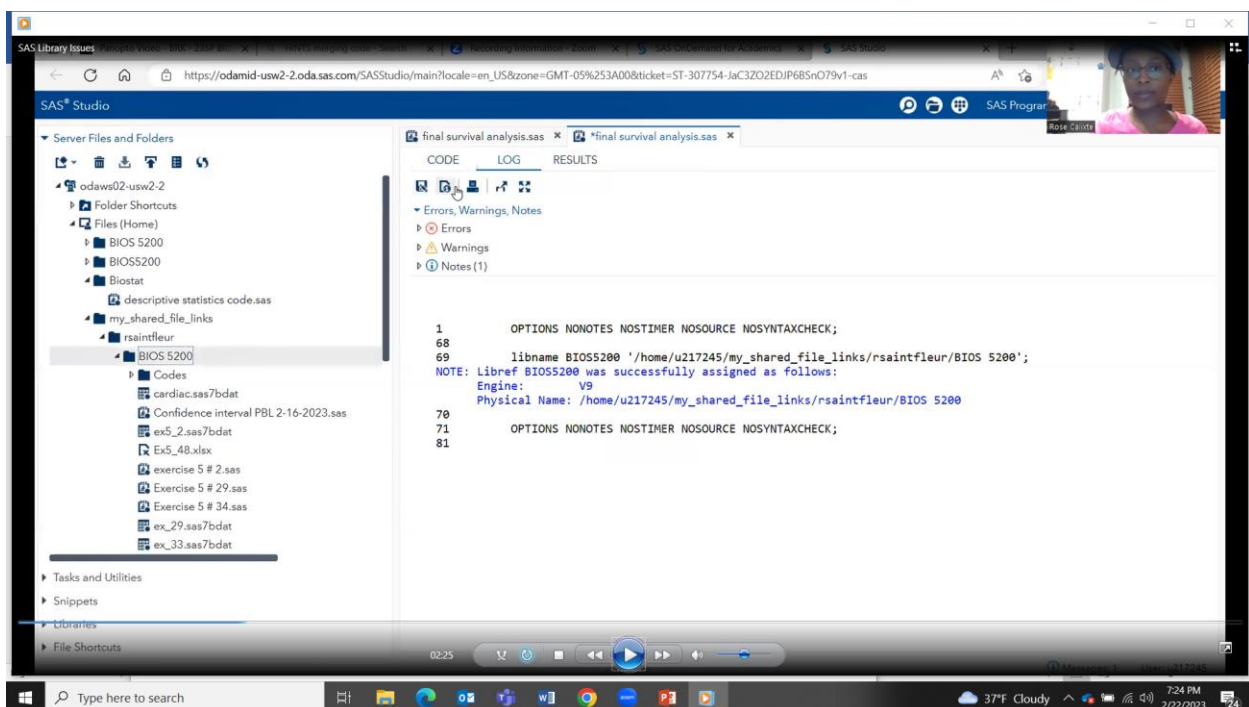


## Steps to create your SAS Library to save your File

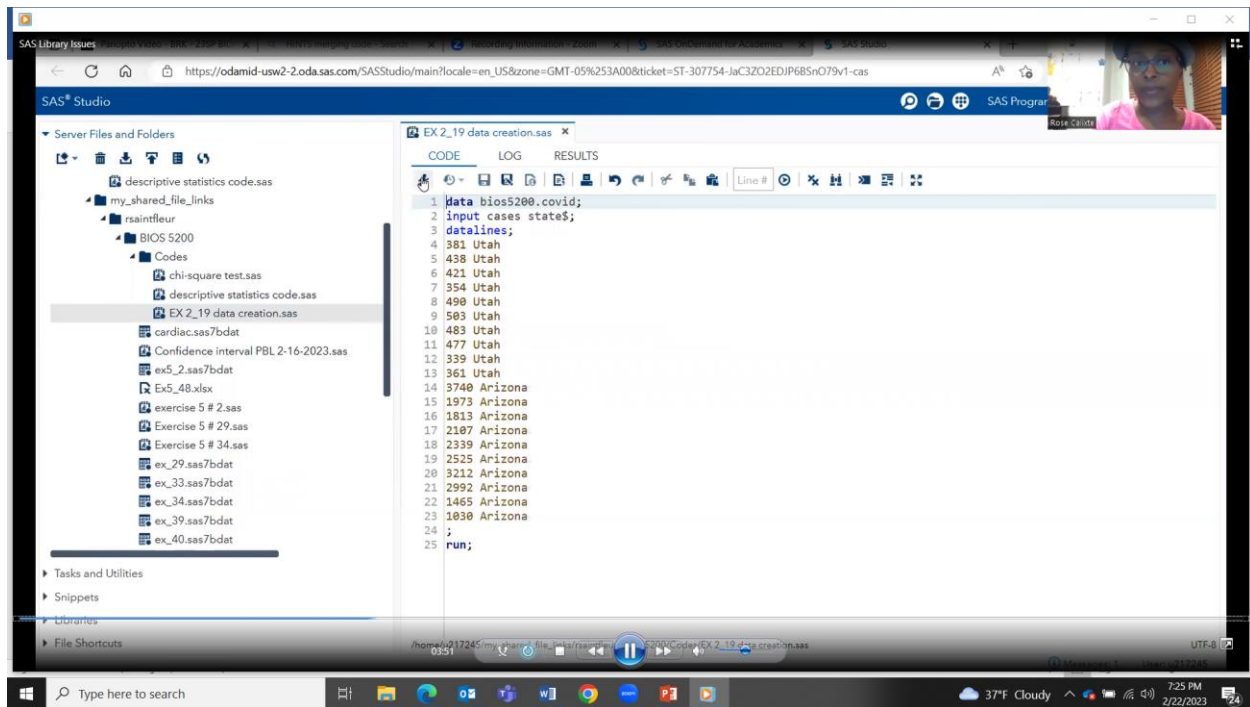
We should not use the shared folder as the location for the library. You only have read access to it. So, you will not be able to save your SAS datasets.



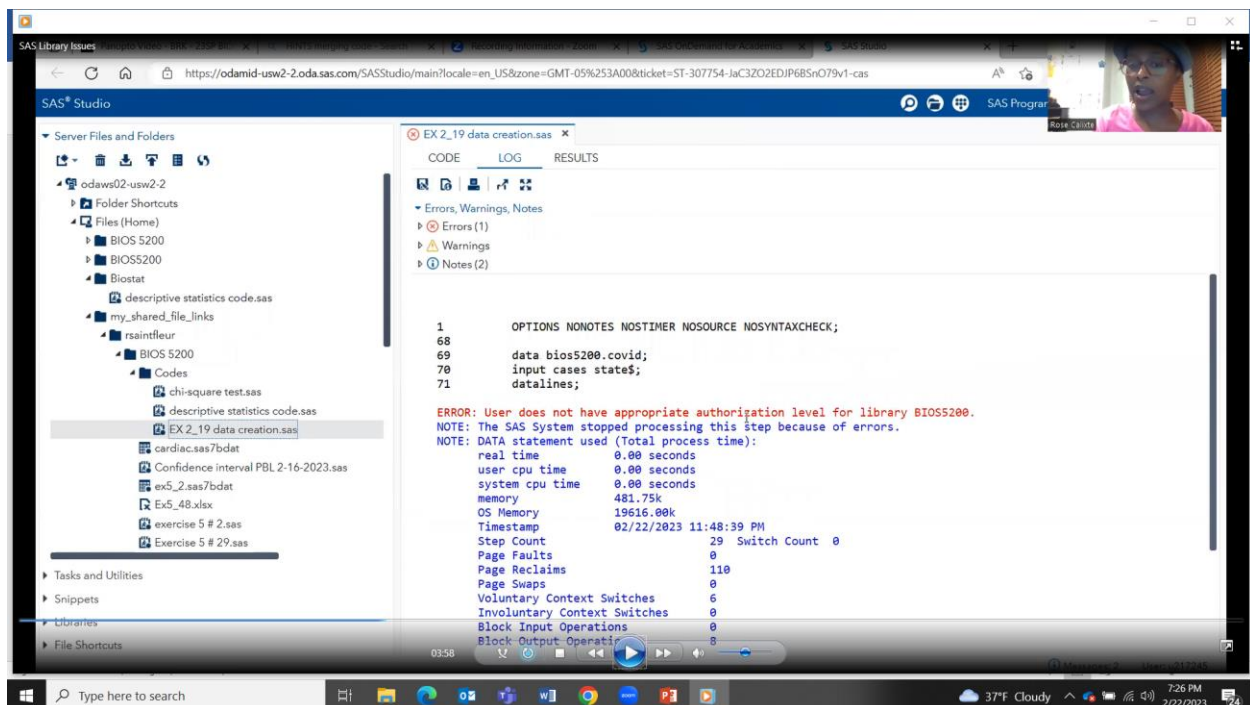
Library Created:



Code ran.



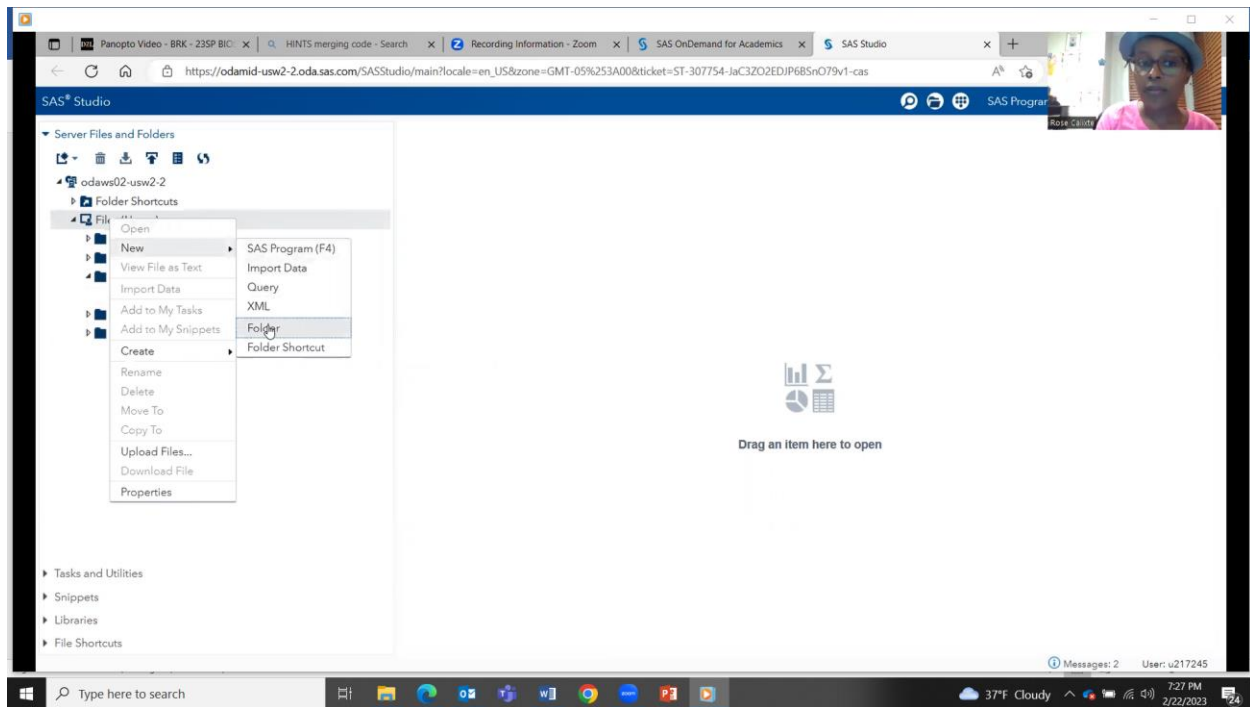
But, error message



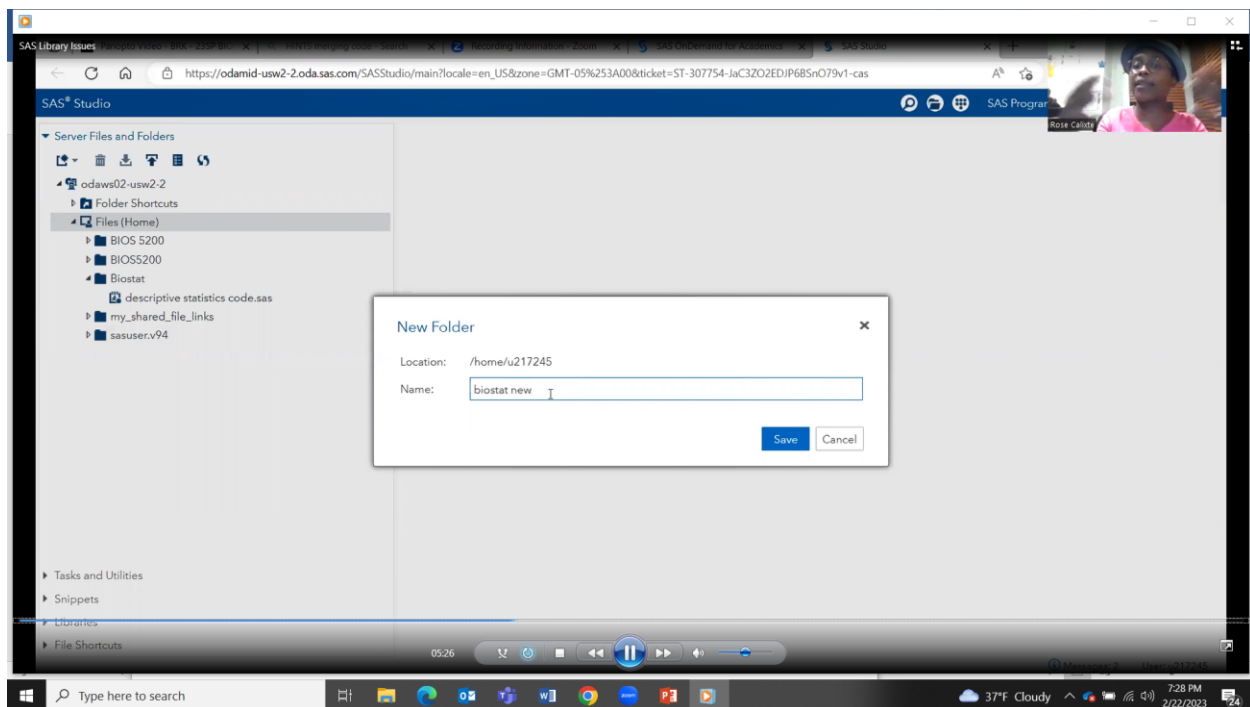
What should you do?

Prepared by Rose Saint Fleur-Calixte, PhD, PStat®

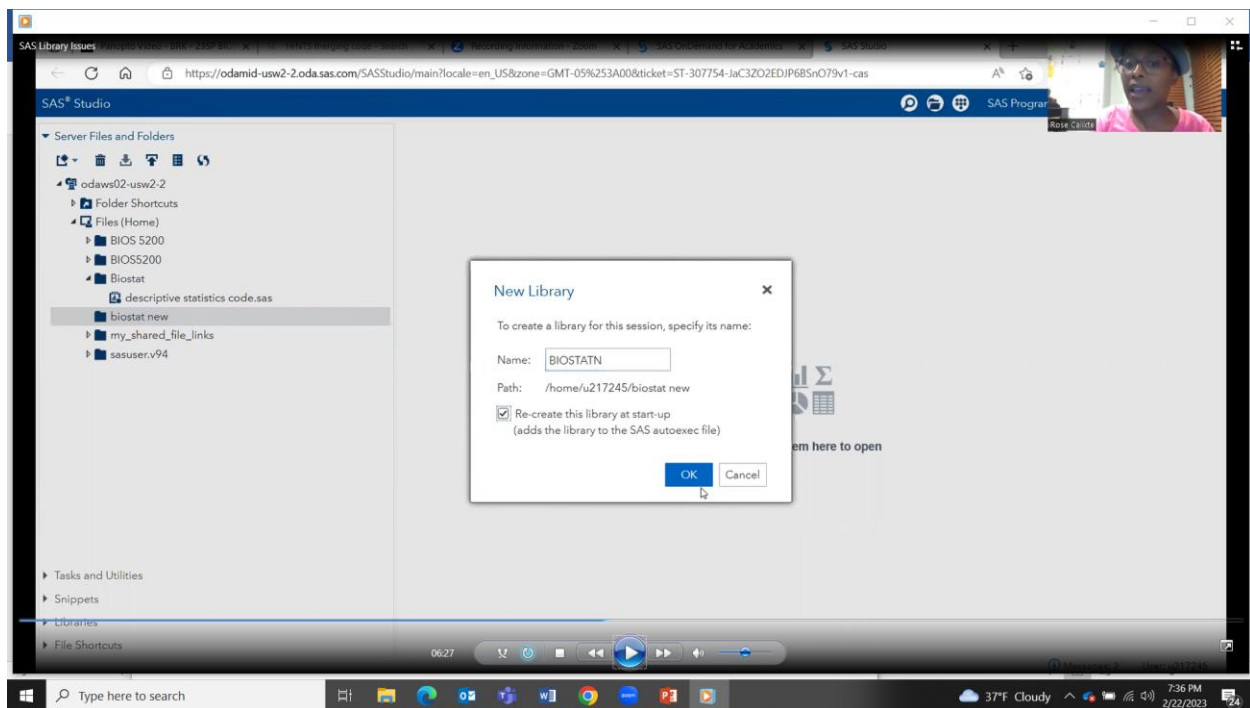
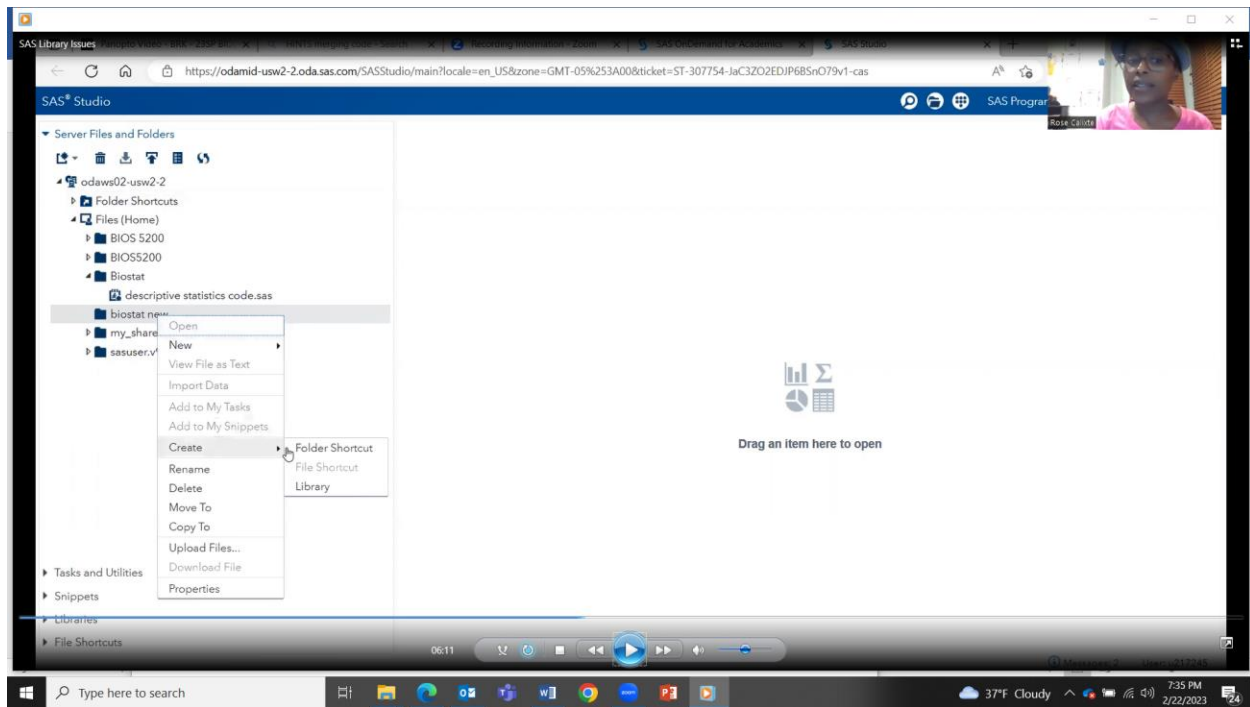
Create a folder in your home location:



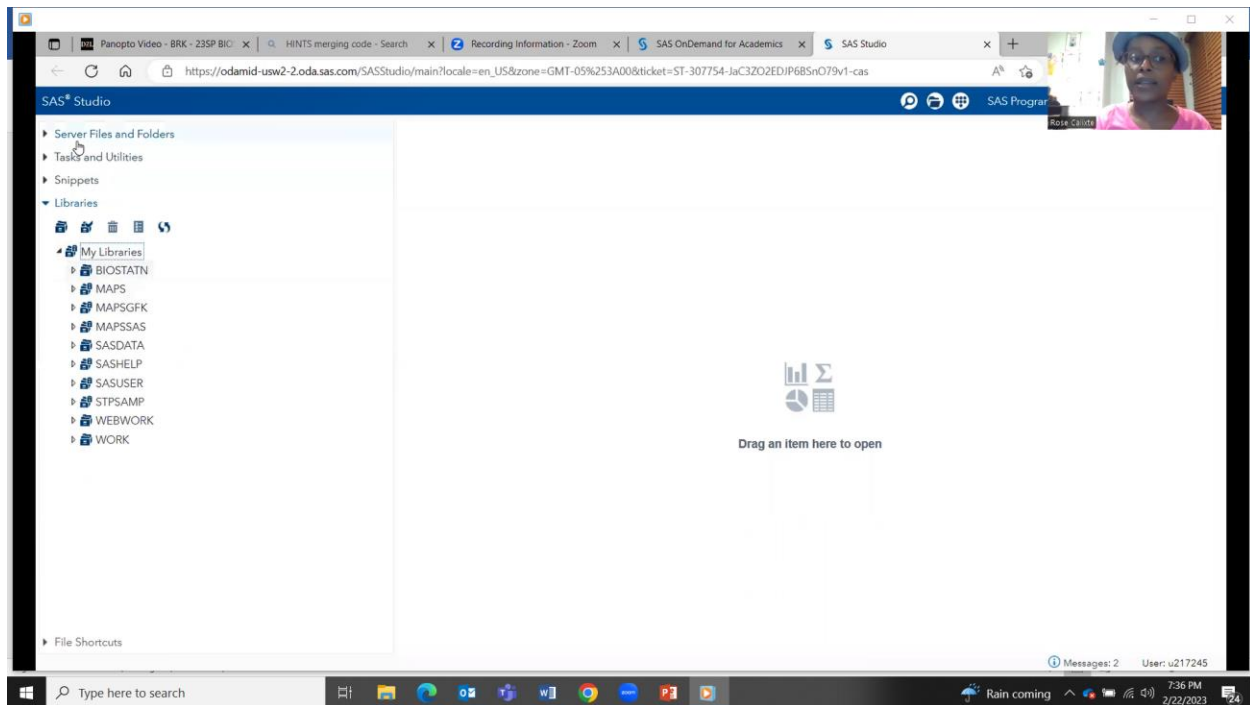
Give it a name



Creating your own library



Library gets created and appear in the list



Change name of library in code from class to link to your own library name.

