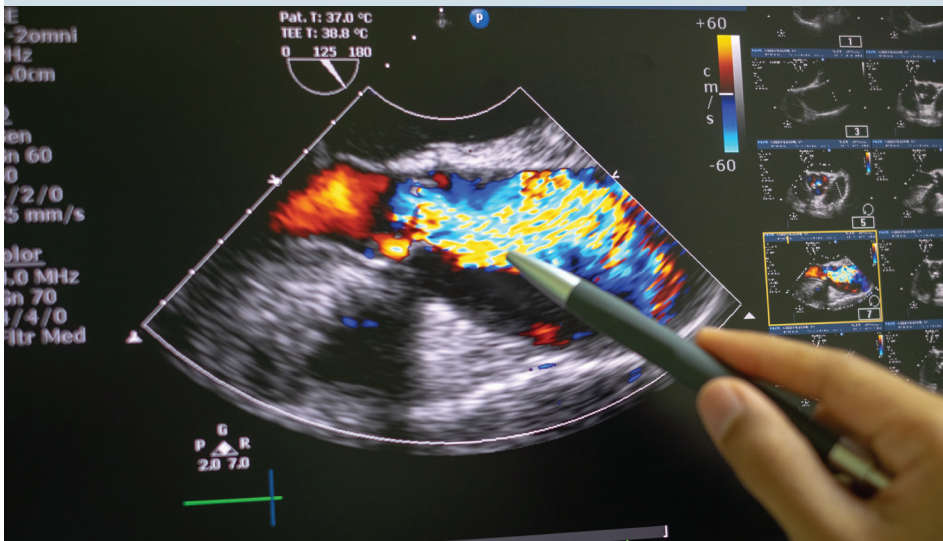


## Diagnostic Medical Imaging (BS)

2 Year Full Time Program



**DOWNSTATE**  
HEALTH SCIENCES UNIVERSITY



**Diagnostic Medical Sonography is one of the fastest growing diagnostic fields. It is used in nearly every medical specialty and in every type of medical care setting.**

Sonography uses high frequency sound waves to create detailed, real-time images of organs and structures in the body in a safe, painless, and non-invasive procedure. Medical Sonographers must have extensive knowledge of anatomy, pathophysiology, physics, and both medical and biological sciences.

The SUNY Downstate program in Diagnostic Medical Imaging was the first in the United States to offer a bachelor of science degree with a major in Diagnostic Medical Sonography.

The curriculum integrates the basic and medical sciences with sonography courses, giving students a comprehensive academic base which is then applied to lab experiences throughout the New York area.

The curriculum includes abdominal, obstetrics and gynecology, echocardiography, pediatric and vascular ultrasound, utilizing classroom instruction, student ultrasound lab, and state-of-the-art ultrasound simulators.

### Before you apply

- Review the website to learn more about our program.
- Sign up to attend an Information Session (bring copies of all college transcripts for prerequisite evaluation).
- Prepare an academic completion plan for any outstanding prerequisites.
- Assess the best time to apply; early applications are encouraged.
- Review the curriculum and the tuition to determine costs and duration of the program.
- For additional information, please visit the website.

### Steps to apply

1. **Download and Read the Application Instructions.**
2. **Check the Deadline on our website.**
3. **Prepare Your Documentation.**  
You may be required to upload documents related to your application
4. **Submit Your Application via:**  
[www.tinyurl.com/3xuftyk7](http://www.tinyurl.com/3xuftyk7)
5. **Check Your Status.**  
Upon submitting your online application, you are able to log back in to upload additional documents and monitor your application status.

**See reverse for requirements >**

### Accreditation, Credentialing and Licensure

The Commission on Accreditation of Allied Health Education Programs  
9355 - 113<sup>th</sup> St. N, #7709  
Seminole, FL 33775  
727-210-2350 | [www.caahep.org](http://www.caahep.org)



**Scan the QR code  
to visit the school's  
website or:**

[www.tinyurl.com/downstate-DMI](http://www.tinyurl.com/downstate-DMI)

## Admission Requirements

- A **minimum of 60 semester credits** from colleges or universities accredited by one of the following: The Middle States Commission on Higher Education (MSCHE), the New England Commission on Higher Education (NECHE), The Higher Learning Commission (HLC), the Northwest Commission on Colleges and Universities (NWCCU), the Southern Association of Colleges and Schools Commission on Colleges (SACSCOC), the Western Association of Schools and Colleges (WASC) Senior College and University Commission (WSCUC) or the Accrediting Commission for Community and Junior Colleges (ACCJC), United States Department of Education (USDE). If you have any questions about whether a transfer course will be accepted, you should check with the Office of Admissions prior to enrolling in the course.
- A minimum undergraduate cumulative Grade Point Average (GPA) of 3.0 on a 4.0 scale.
- You must submit two letters of recommendation. SUNY Downstate Health Sciences University has moved toward exclusive use of electronic recommendation submissions. Your recommenders must be a professional colleague who can comment on your potential for success in this program, or a current/former college/university professor or an employer/supervisor. Please visit [www.tinyurl.com/4r9m4r62](http://www.tinyurl.com/4r9m4r62) to learn more about the letter of recommendation requirements.
- A *minimum* of 20 hours of patient related clinical healthcare experience **in a medical setting is required**. This may be paid or volunteer work hours, but must involve patient contact. **In addition, this experience must have been completed within the last five (5) years and placed on official letter head and signed by the supervisor in the medical setting where you volunteered.**
- The DMI program accepts online courses for prerequisites, but prefer a college laboratory setting (wet lab) for science courses that require labs. All physical science courses **must be designated for science majors**.
- A minimum grade of "C" or better in the following prerequisite courses:

Subject	Total Semester Credits
Anatomy & Physiology 1 with lab* and Anatomy & Physiology 2 with lab*	8
General Chemistry 1 with lab	4
General Physics 1 with lab*	4
College Mathematics or Statistics	3
Psychology	3
English	6

\* Must be completed within the past six (6) years prior to the date of entry. Courses completed in a traditional classroom setting preferred.

Admissions requirements are subject to change.

**NOTE:** Please review our website for the General Education and Liberal Arts and Sciences requirement.

Refer to the website for the most current information: [www.tinyurl.com/downstate-DMI](http://www.tinyurl.com/downstate-DMI)