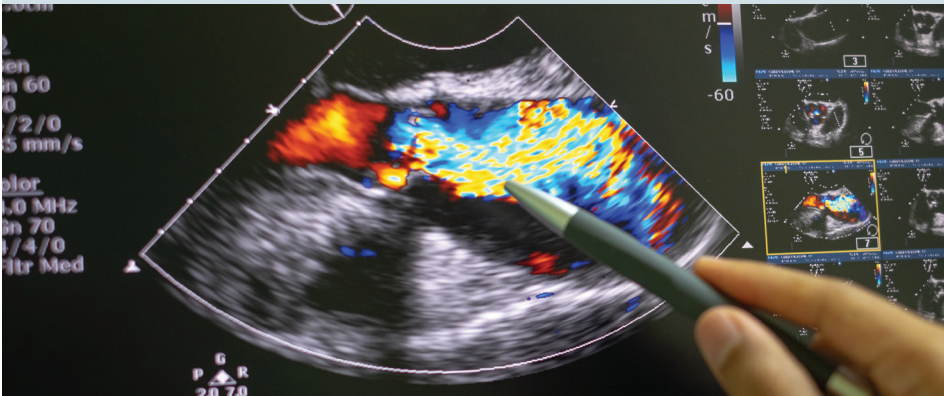


Diagnostic Medical Sonography

22 Month Certificate Program



DOWNSTATE
HEALTH SCIENCES UNIVERSITY



Diagnostic Medical Sonography is one of the fastest-growing fields in healthcare. It is an essential tool used in nearly every medical specialty and care setting, with strong demand for skilled sonographers.

Sonography uses high-frequency sound waves to produce real-time images of the body's organs and structures in a safe, non-invasive manner. Sonographers must have strong knowledge of anatomy, pathophysiology, physics, and related medical sciences.

History:

- Established in 1972
- Accredited by the Commission on Accreditation of Allied Health Education Programs (CAAHEP)

Academic Pathway:

MOU with SUNY Empire allows graduates to transfer credits toward a degree completion of your choice (e.g., associate's, bachelor's or master's)

Training Offered:

Comprehensive instruction in four sonography specialties:

- Abdominal Sonography
- Obstetrics & Gynecology (OB/GYN)
- Adult Echocardiography
- Vascular Technology

The curriculum blends medical sciences with sonography training, giving students a strong foundation applied in clinical labs across New York. It includes abdominal, OB/GYN, cardiac, pediatric, and vascular ultrasound through classes, hands-on labs, and advanced simulators.

Before you apply

- Review the website to learn more about our fall start program.
- Sign up to attend an Information Session (bring copies of all college transcripts for prerequisite evaluation).
- Prepare an academic completion plan for any outstanding prerequisites.
- Assess the best time to apply; early applications are encouraged.
- Review the curriculum and the tuition to determine costs and duration of the program.
- For additional information, please visit the website.

Steps to apply

1. **Download and Read the Application Instructions.**
2. **Check the Deadline on our website.**
3. **Prepare Your Documentation.**
You may be required to upload documents related to your application
4. **Submit Your Application via:**
www.tinyurl.com/mr29th9r
5. **Check Your Status.**
Upon submitting your online application, you are able to log back in to upload additional documents and monitor your application status.

See reverse for requirements >

Accreditation, Credentialing and Licensure

The Commission on Accreditation of Allied Health Education Programs
9355 - 113th St. N, #7709
Seminole, FL 33775

727.210.2350 | www.caahep.org



**Scan the QR code
to visit the school's
website or:**

www.tinyurl.com/downstate-DMI

Admission Requirements

- A minimum of 23 college credits **of prerequisite coursework** completed prior to entry from a college/university that is institutionally accredited and recognized by the Council for Higher Education Accreditation (CHEA), such as: the Middle States Association of Colleges and Schools, New England Association of Schools and Colleges, North Central Association, Northwest Commission on Colleges and Universities, Southern Association of Colleges and Schools, and the Western Association of Schools and Colleges.
- A minimum science Grade Point Average (GPA) of 2.75 on a 4.0 scale.
- A minimum of 20 hours of patient related clinical healthcare experience in a **medical setting is required**. This may be paid or volunteer work hours, but must involve patient contact and completed within the last five (5) years.
- Two (2) letters of recommendation. Please visit our website to learn more about the letter of recommendation requirements.
- A minimum grade of "C" or better in the following prerequisite courses:

Subject	Total Semester Credits
Anatomy & Physiology 1 with lab* and Anatomy & Physiology 2 with lab* (Must be designated for Science Majors)	8
Medical Terminology*	2-3
General Physics*	3-4
College Mathematics or Statistics	3
English/Communications	6

* Must be completed within the past six (6) years prior to the date of entry. Courses completed in a traditional classroom setting preferred. AP courses accepted.

CPR certification is required by August 15th, if you are admitted.
Courses accompanied with lab must be designated for science majors.

Admissions requirements are subject to change.

Refer to the website for the most current information: www.tinyurl.com/downstate-DMI



Financing your Education