

# Diagnostic Medical Imaging (BS)

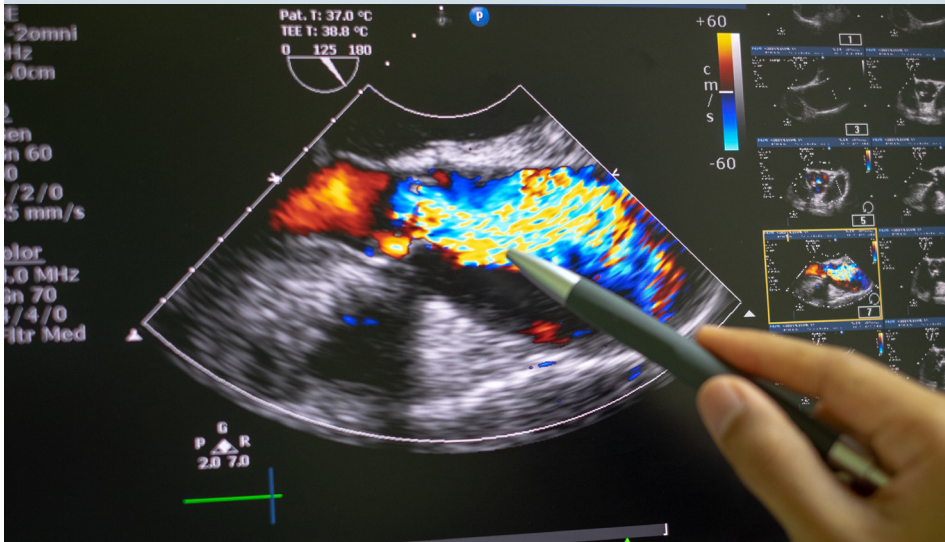
2 Year Full Time Program



**DOWNSTATE**  
HEALTH SCIENCES UNIVERSITY

## Before you apply

- Review the website to learn more about our summer start program.
- Sign up to attend an Information Session (bring copies of all college transcripts for prerequisite evaluation)
- Prepare an academic completion plan for any outstanding prerequisites
- Assess the best time to apply; early applications are encouraged
- Review the curriculum and the tuition to determine costs and duration of the program
- For additional information, please visit the website



**Diagnostic Medical Sonography is one of the fastest growing diagnostic fields. It is used in nearly every medical specialty and in every type of medical care setting.**

Sonography uses high frequency sound waves to create detailed, real-time images of organs and structures in the body in a safe, painless, and non-invasive procedure. Medical Sonographers must have extensive knowledge of anatomy, pathophysiology, physics, and both medical and biological sciences.

The SUNY Downstate Program in Diagnostic Medical Imaging was the first in the United States to offer a bachelor of science degree with a major in Diagnostic Medical Sonography.

The curriculum integrates the basic and medical sciences with sonography courses, giving students a comprehensive academic base which is then applied to lab experiences throughout the New York area.

The curriculum includes abdominal, obstetrics and gynecology, echocardiography, pediatric and vascular ultrasound, utilizing classroom instruction, student ultrasound lab, and state-of-the-art ultrasound simulators.

## Steps to apply

1. Download and Read the Application Instructions
2. Check the Deadline on our website
3. Prepare Your Documentation.  
You may be required to upload documents related to your application
4. Submit Your Application via:  
<https://tinyurl.com/3xuftyk7>
5. Check Your Status.  
Upon submitting your online application, you are able to log back in to upload additional documents and monitor your application status

See reverse for requirements >

## Accreditation, Credentialing and Licensure

The Commission on Accreditation of Allied Health Education Programs  
9355 - 113<sup>th</sup> St. N, #7709  
Seminole, FL 33775

Phone: (727) 210-2350  
[www.caahep.org](http://www.caahep.org)



Scan the QR code  
to visit the school's  
website or:

<https://tinyurl.com/downstate-DMI>

## Admission Requirements

- A minimum of 60 semester credits from a college/university institutionally accredited and recognized by the Council for Higher Education Accreditation (CHEA) such as: the Middle States Association of Colleges and Schools, New England Association of Schools and Colleges, North Central Association, Northwest Commission on Colleges and Universities, Southern Association of Colleges and Schools, and the Western Association of Schools and Colleges.
- A minimum undergraduate cumulative Grade Point Average (GPA) of 3.0 on a 4.0 scale.
- A minimum of 20 hours of patient related clinical healthcare experience in a medical setting is required. This may be paid or volunteer work hours, but must involve patient contact and completed within the last five (5) years.
- Two (2) letters of recommendation.
- A grade of "C" or better in the following prerequisite courses:

Subject	Total Semester Credits
Anatomy & Physiology 1 with lab* and Anatomy & Physiology 2 with lab*	8
General Chemistry 1 with lab	4
General Physics 1 with lab*	4
College Mathematics or Statistics	3
Psychology	3
English	6

\* Must be completed within the past six (6) years prior to the date of entry. Courses completed in a traditional classroom setting preferred.

- CPR certification is required by August 15<sup>th</sup>, if you are admitted.
- Courses accompanied with lab must be designated for science majors.

Admissions requirements are subject to change.

Refer to the website for the most current information: <https://tinyurl.com/downstate-DMI>