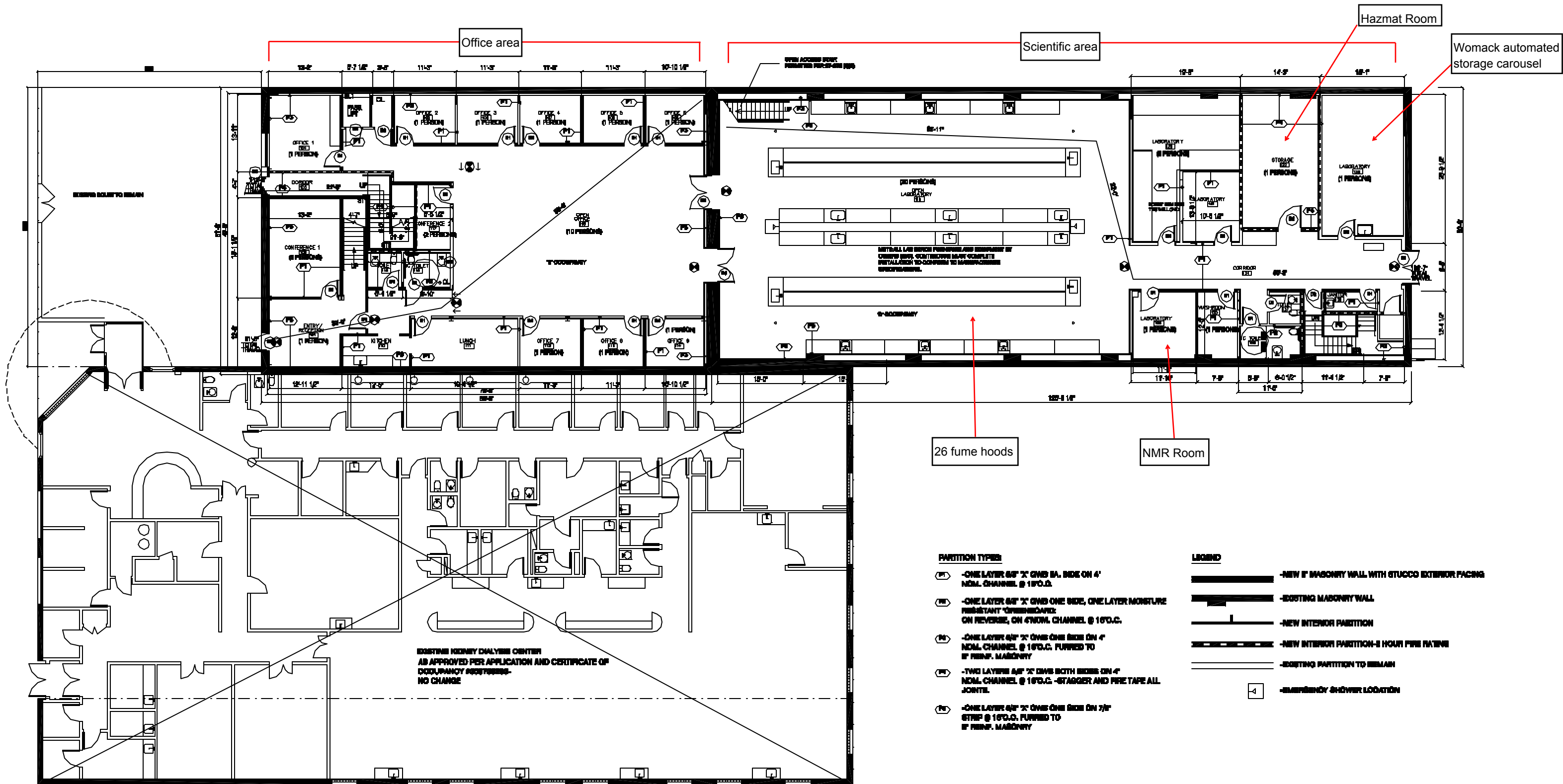


# Commercial Synthetic Chemistry Facility, 710 Parkside Avenue, Brooklyn, NY 11226 - approximately 13,000 square feet



26 fume hoods

NMR Room

**PARTITION TYPES**

- ① -ONE LAYER 5/8" X 2" OVER BA. SIDE ON 4" NOM. CHANNEL @ 16"O.C.
- ② -ONE LAYER 5/8" X 2" OVER ONE SIDE, ONE LAYER MOISTURE RESISTANT GYPSUM BOARD ON REVERSE, ON 4" NOM. CHANNEL @ 16"O.C.
- ③ -ONE LAYER 5/8" X 2" OVER ONE SIDE ON 4" NOM. CHANNEL @ 16"O.C. FURRED TO 8" REINF. MASONRY
- ④ -TWO LAYERS 5/8" X 2" OVER BOTH SIDES ON 4" NOM. CHANNEL @ 16"O.C. -STAGGER AND FIRE TAPE ALL JOINTS.
- ⑤ -ONE LAYER 5/8" X 2" OVER ONE SIDE ON 3/4" STEEL @ 16"O.C. FURRED TO 8" REINF. MASONRY

**LEGEND**

- NEW 8" MASONRY WALL WITH STUCCO EXTERIOR FACING
- EXISTING MASONRY WALL
- NEW INTERIOR PARTITION
- NEW INTERIOR PARTITION-1 HOUR FIRE RATING
- EXISTING PARTITION TO REMAIN
- EMERGENCY SHOWER LOCATION

1 FIRST FLOOR PLAN  
A101  
1/8"=1'-0"

## FIRST FLOOR

**WALTER CHATHAM, ARCHITECT**  
 100 WEST 17TH STREET  
 NEW YORK, NY 10011  
 TEL: 212.255.1100  
 FAX: 212.255.1101

PROJECT: 21075-01  
 DATE: 01/15/10  
 DRAWING NO.: 10101

A101