

## Our Mission

We believe that every person with epilepsy deserves comprehensive and individualized care. Our goal is to help our patients achieve seizure freedom without side effects and lead healthy, independent lives.

## About Us

The SUNY Downstate Comprehensive Epilepsy Center provides a multi-disciplinary approach to the complex needs of adults and children with epilepsy and seizures.

As the only Comprehensive Epilepsy Center in Brooklyn and Queens, we boast a team of fellowship-trained and board-certified specialists in both adult and pediatric epilepsy. Our new 8-bed Epilepsy Monitoring Unit (EMU) facilitates rapid diagnosis and optimal treatment for our patients. A comprehensive surgical evaluation is available to patients whose seizures cannot be completely controlled with medication. Epilepsy surgery can often provide seizure freedom *without loss of brain function* in carefully selected patients.

## Comprehensive Care Includes:

- Epilepsy Specialist Evaluation and Treatment
- Streamlined Access to Epilepsy Nurses and Physicians
- EEG
- Video-EEG
- Imaging Studies: MRI, PET, MRS (MR-Spectroscopy)
- Neuropsychological Testing
- Wada Testing
- Electrocorticography
- Epilepsy Surgery

## Comprehensive Epilepsy Center

University Hospital of Brooklyn  
450 Clarkson Avenue, Box 1213  
Brooklyn, NY 11203


Phone (718) 270-2959

Fax (718) 270-4711

[www.downstate.edu/epilepsy](http://www.downstate.edu/epilepsy)

State-of-the-art Evaluation, Diagnosis and Treatment for Epilepsy and Seizure Disorders.

Call for an Appointment  
or Additional Information  
**(718) 270-2959**

  
**SUNY  
DOWNSTATE**  
Medical Center  
Comprehensive Epilepsy Center  
University Hospital of Brooklyn  
450 Clarkson Avenue, Box 1213  
Brooklyn, NY 11203

# SUNY Downstate COMPREHENSIVE EPILEPSY CENTER



State-of-the-art Evaluation, Diagnosis and Treatment  
for Epilepsy and Seizure Disorders



SUNY  
**DOWNSTATE**  
Medical Center

**718-270-2959**

## What Is Epilepsy?

Epilepsy is a neurological disorder causing recurrent seizures. The seizures may consist of uncontrolled jerking movements, loss of consciousness, staring spells, involuntary movements or periods of confusion.

Epilepsy affects about 3 million Americans (approximately 1% of the population), according to the Centers for Disease Control, with 125,000 new cases diagnosed every year.

Many people think epilepsy is a childhood disease, but it can develop at any time of life. There is a high incidence of epilepsy in people over 50.

## What Causes Epilepsy?

In many people with epilepsy, no cause can be identified.

Risk factors include:

- Head Trauma/Injury
- Stroke
- Brain Tumors
- Infections such as Meningitis or Encephalitis
- Abnormalities of Brain Development
- Genetic Conditions

To refer a patient to the Epilepsy Center or Monitoring Unit for evaluation, please fax your request to (718) 270-4711 or call (718) 270-2959.



We accept most insurance plans, including Medicare, Medicaid and Managed Care Plans.

## ■ Epilepsy Monitoring Unit

The SUNY Downstate Epilepsy Monitoring Unit (EMU), a fundamental part of the Comprehensive Epilepsy Center, is a specialized 8-bed unit equipped with dedicated simultaneous video and EEG monitoring equipment linked by computer network to facilitate rapid and real-time examination of the recordings.

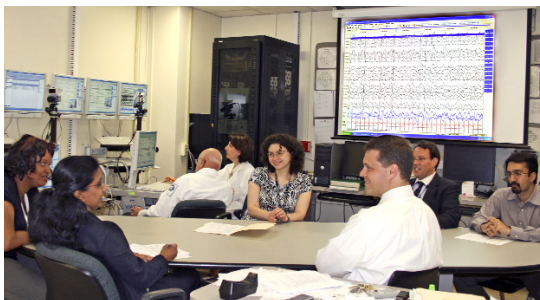
Seizures are recorded and examined by our epilepsy specialists so that proper diagnosis can be made and the best treatment options determined.



Dr. Grant chats with a patient in the Epilepsy Monitoring Unit.

## ■ Multidisciplinary Epilepsy Team

The Comprehensive Epilepsy Center focuses on quality patient care using a multi-disciplinary approach. Our specialized team consists of adult and pediatric epileptologists (doctors who specialize in epilepsy), neurosurgeons, radiologists, interventional radiologists, nurse practitioners, neurodiagnostic technologists, neuropsychologists and social workers.



Dr. Roger Cracco and Dr. Tatyana Yuzbashyan observe EMU patients on video monitors as Drs. McSween, Chari, Reznikov, Maus, Grant and Bhise discuss patient treatment. Collaboration among our epileptologists enables us to successfully manage even the most challenging cases.

## ■ Treatment Options

Our primary objective in treating epilepsy is seizure freedom. Epilepsy medications are the mainstay of treatment, but there are other approaches as well. Different types of epilepsy surgery are very effective in certain patients. A special high fat and low carbohydrate “ketogenic” diet can be effective in some children with severe forms of epilepsy.

### ■ Surgery

For carefully selected patients whose seizures are not controlled with medication, we offer:

- Vagus Nerve Stimulation (VNS)
- Anterior Temporal Lobectomy
- Focal Brain Resection
- Corpus Callosotomy
- Hemispherectomy

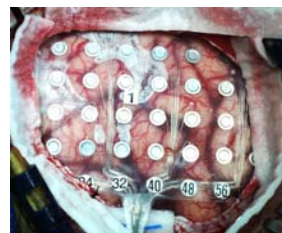
Prior to surgery, tests are performed both to determine where the seizures originate, and also to determine where speech, thinking and memory functions are located, in order to avoid damage to these areas.

#### ◆ Wada Test

This test combines neuroimaging and neuropsychological testing to identify which hemisphere is most responsible for language and memory. It is also known as an intracarotid sodium amobarbital test.

#### ◆ Intracranial Electrode Placement

With surgical implantation of electrodes directly on or in the brain, doctors can precisely localize where seizures begin, so that minimal resections can be made.



Intracranial electrode placement

#### ◆ Cortical Mapping

Cortical mapping is a highly specialized test in which brief electrical stimuli are used to precisely localize the cortex responsible for critical brain functions, such as speech/language, motor control and sensation.

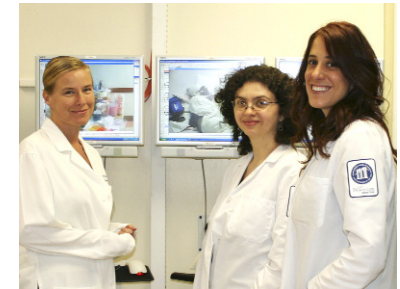
## ■ Physicians You Can Trust

Our outstanding faculty has extensive clinical and research experience. Our Epileptologists are fellowship-trained and board-certified in Neurology/Pediatric Neurology and also Clinical Neurophysiology (EEG). They have been widely published in peer-reviewed journals, including Neurology, Stroke, Epilepsy and Behavior, Journal of Clinical Neurophysiology, Epileptic Disorders, Epilepsia, Science, Brain Research and many others.



Dr. Maus, Dr. Chari, Mary Noto, Dr. Grant and Dr. McSween.

A number of our doctors have been nationally recognized by Castle Connolly, Consumers' Research Council of America and the Best Doctors in America®.



Dr. Koziorynska, Dr. Reznikov and Dr. Mortati observe Video-EEG of patients in the EMU.

## ■ Our Team

### EPILEPSY – ADULT

Arthur C. Grant, MD, PhD  
Director, Comprehensive Epilepsy Center

Ewa Koziorynska, MD  
Douglas C. Maus, MD, PhD  
Katherine A. Mortati, MD  
Helen Valsamis, MD

### EPILEPSY – PEDIATRIC

Geetha Chari, MD  
Tresa McSween, MD  
Alexandra Reznikov, MD

### NEUROSURGERY

Ethan A. Benardete, MD, PhD  
Nicholas Post, MD

## ■ Community Outreach

One of our primary goals is to increase community awareness and provide education to the public.



Our physicians speak on epilepsy at hospitals throughout the New York City area and are available to speak at community organizations, church meetings, and healthcare facilities.

### NEUROPSYCHOLOGY

Jonathan Slyker, PhD  
Luba Nakhutina, PhD

### NEURODIAGNOSTIC TECHNOLOGISTS

Marie Choute  
Mora Weekes  
Deborah Wood, R EEG T

### STAFF

Mary Noto – Administrator  
Marla Reid, NP, BSN – Nurse Practitioner

## ■ Epilepsy Research

SUNY Downstate Medical Center is internationally recognized for its neuroscience and epilepsy research.

Ongoing research programs include studies of post-traumatic epilepsy, seizure prediction, quantitative EEG, epilepsy and perception, seizures and heart function, and fundamental mechanisms of epilepsy.

## ■ [www.downstate.edu/epilepsy](http://www.downstate.edu/epilepsy)

Please visit our website for additional information about our physicians, staff, facility and services.