

## SNYNAPSE ACCESS via HealthBridge

Accessing Fuji/RIS Radiology Results and Imaging Using HealthBridge



### Results Tab

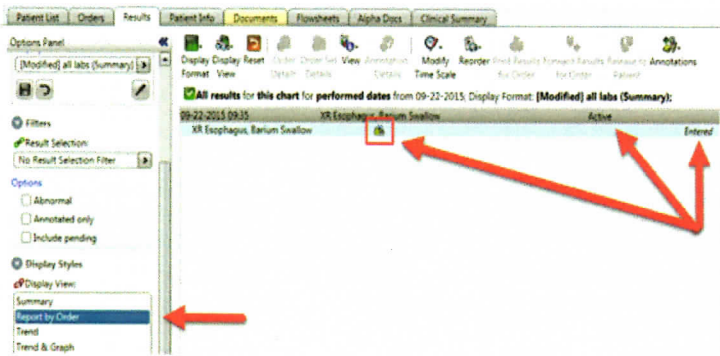
Before viewing a patient's radiology images from within HealthBridge you must first select the patient and click on the Results Tab



### Different Radiology Work-flow Stages

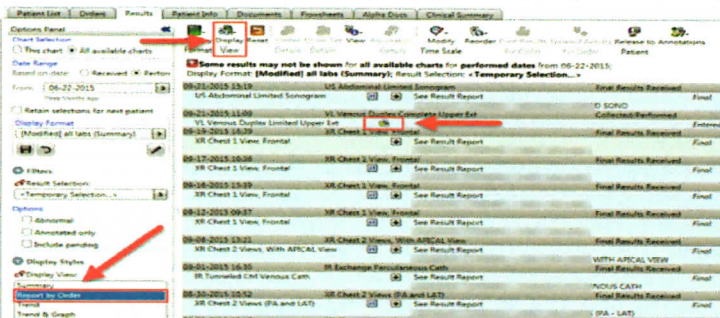
1. **The Image Entered View** - This view shows a patient's study that has been entered in the Fuji PACS by a radiology technician.

- Note:** the "radiology image icon" is displayed also the status of the order is logged as "Active". This order is labeled as "Entered", but have not been submitted.



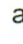

2. **Marked as Performed View** - This view shows a patient's study that has been entered in the Fuji PACS by a radiology technician.

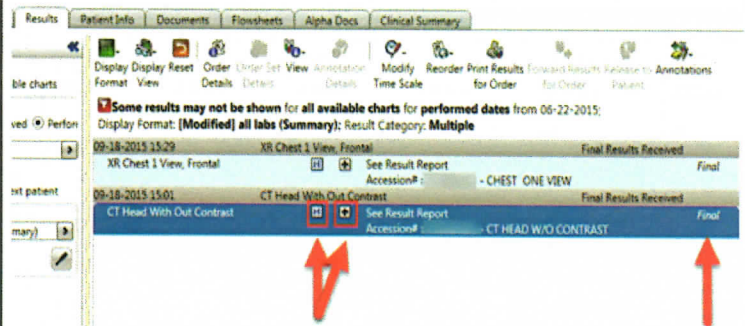
- This is when the Radiology Technician completes the patient's study in Fuji RIS, the task will display as "performed"
- By clicking the radiology icon  below, you can display the patient's study in Fuji RIS. (**Only click once!**)





### Different Radiology Work-flow Stages Cont'

3. The **Final Results View** - the (Report by Order) view opens with the radiology images option for the date listed.

- Click on the plus icon  to view radiology results report.
- Click on the H icon  to open the "updated results by received date window".



4. This view is only displayed by clicking the "H" icon. The updated results by received date window opens.

- Click on the radiology imaging icon  to view radiology images.
- By clicking on the radiology imaging icon, this will open the Fuji PACS radiology imaging program.
- When maximizing the PowerChart; Click on the middle enlarge window button. 

### Selecting a Study from PowerJacket

- From the PowerJacket View Select the Desired Image Series.
  - To view an additional image in PowerJacket you must highlight the desired description from the list of options.
  - Click on the minimize button to view radiology image(s).  
 Note: You should always view additional patient images in PowerJacket and not from HealthBridge.



For help navigating through PACS or RIS applications please contact the Department of Radiology at 718-270 4613 or 718-270-8132